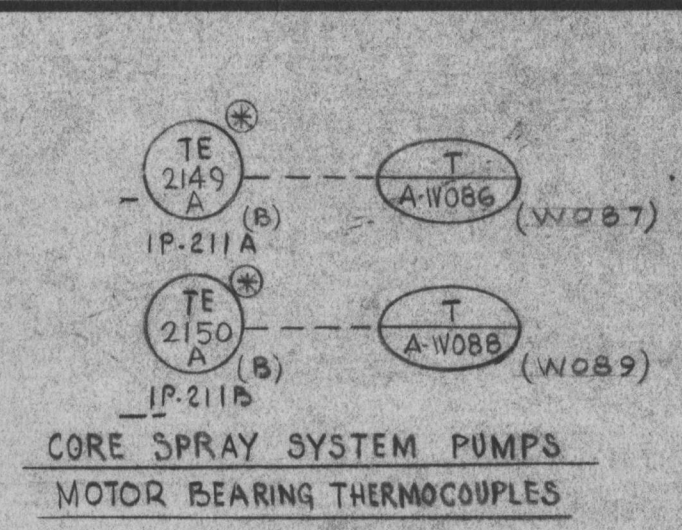
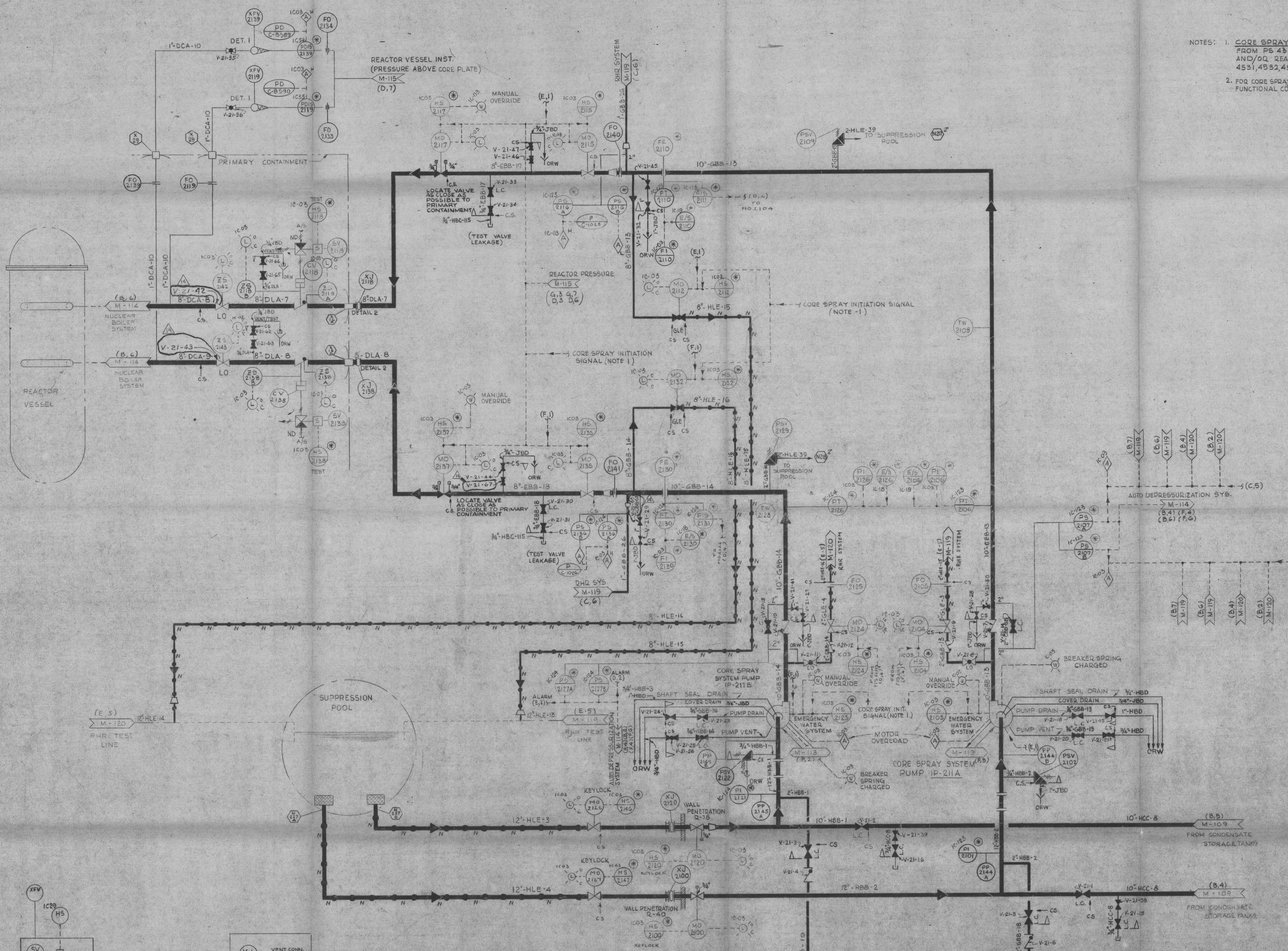


This drawing and the design it covers are the property of BECHTEL. They are loaned and on the borrower's express agreement that they will not be reproduced, copied, loaned, exhibited, or used except in the limited way and private use permitted by any written consent given by the lender to the borrower.



NOTES: 1. CORE SPRAY INITIATION - DRYWELL HIGH PRESSURE FROM PS 4310B, 4311B, 4312B, 4313B, M-143 (E,7) AND/OR REACTOR LOW WATER LEVEL FROM LIS 4531, 4532, 4533, 4534, M-115 (F,2, F,7).  
2. FOR CORE SPRAY SYSTEM LOGIC, SEE GE. CORE SPRAY FUNCTIONAL CONTROL DIAGRAM 729E 613CA.

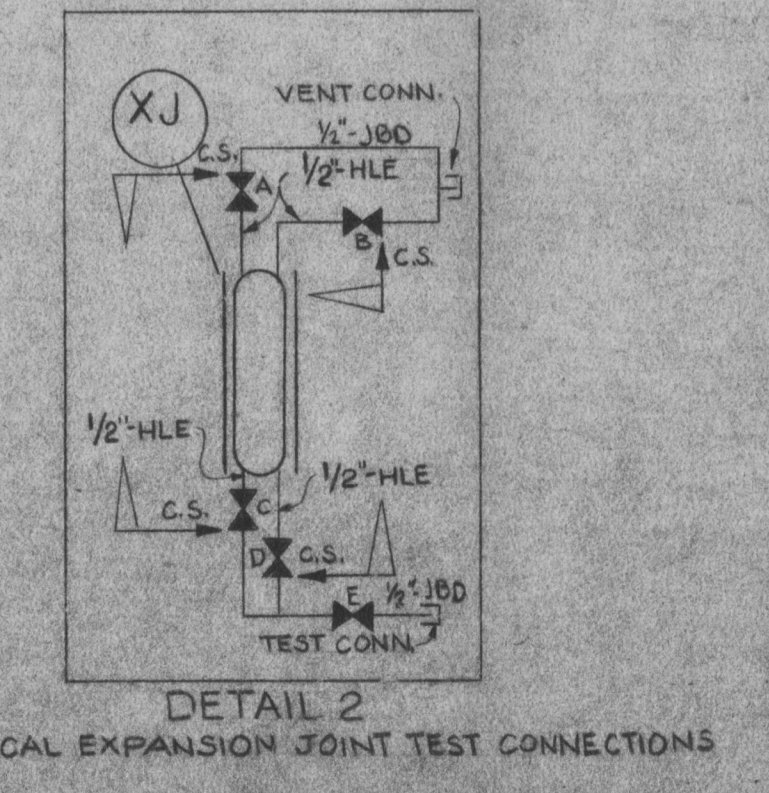
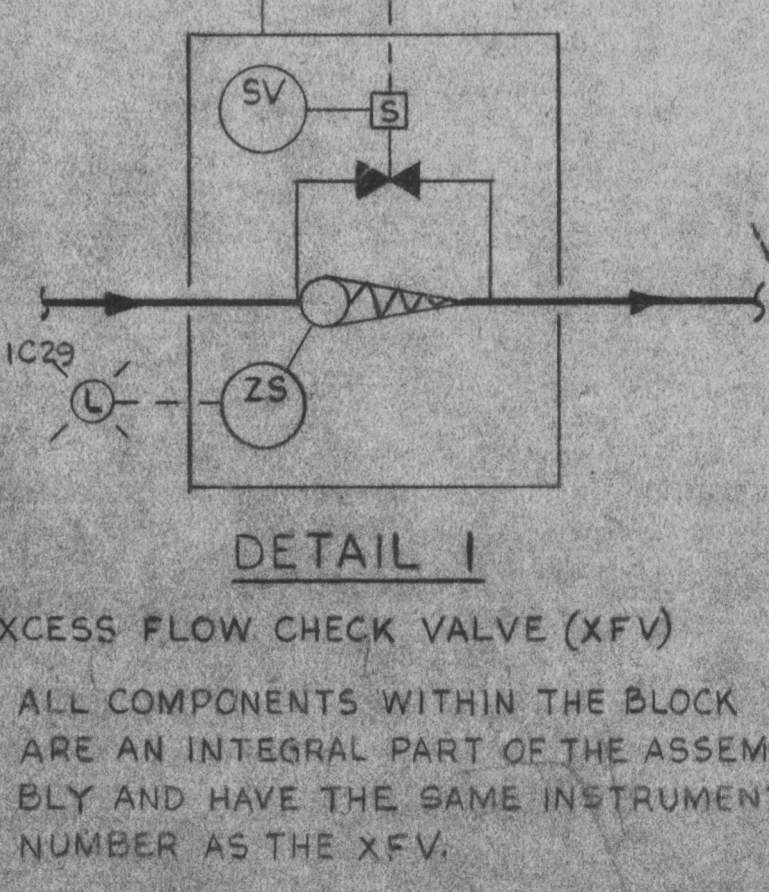
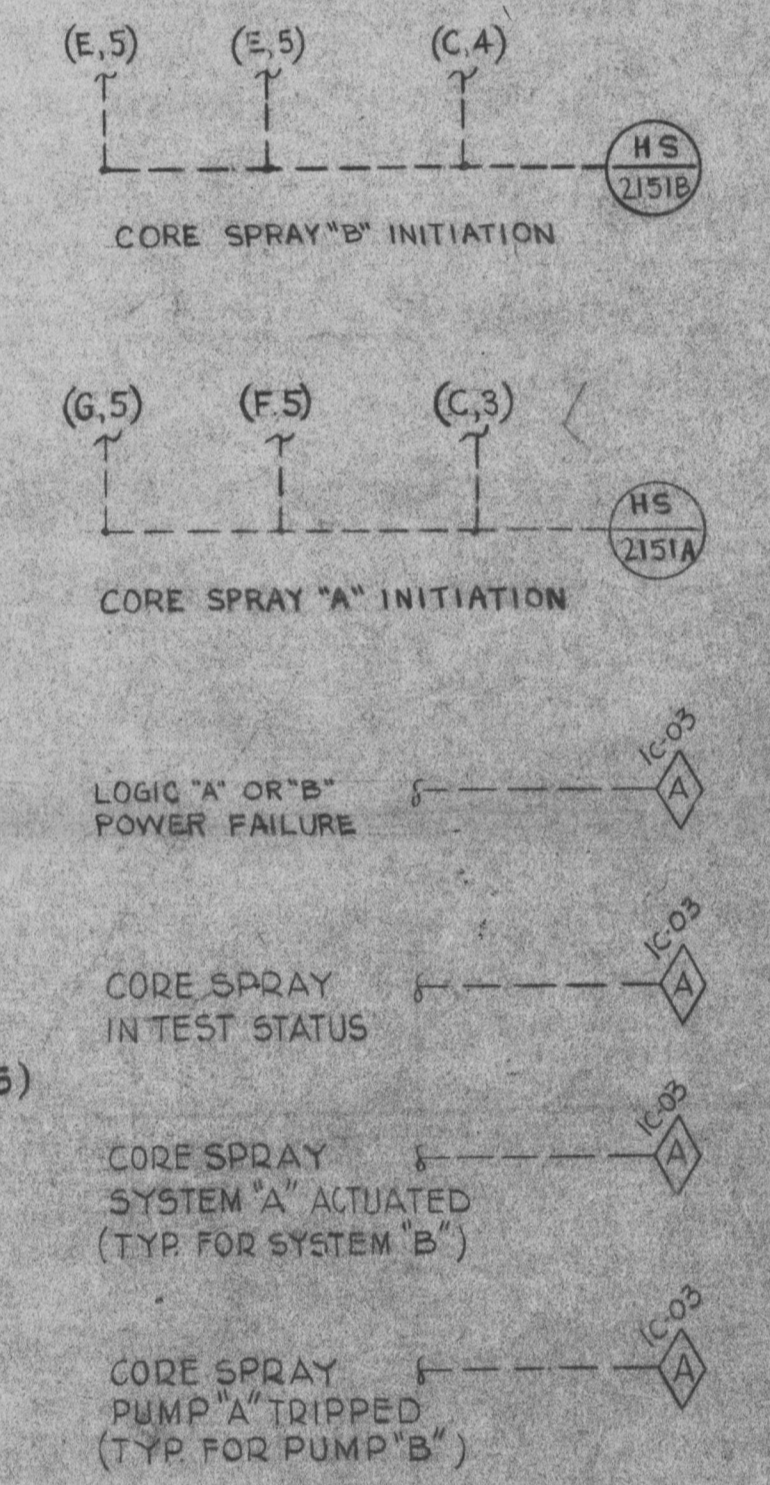


TABLE A. EXPANSION JOINT TEST VALVES

EXPANSION VALVE NO.	VALVE NO.	VALVE NO.	VALVE NO.	VALVE NO.
XJ-2118	V-21-48	V-21-49	V-21-50	V-21-51
XJ-2119	V-21-53	V-21-54	V-21-55	V-21-56
				V-21-57

REVISIONS

NO.	DATE	REVISION	BY	CHKD	APPD
1	8/20/68	REV. PER DDC-536	JW	AK	JA
2	11/4/68	REVISED PER DCR-690	SL	AK	JA
3	1/15/69	REV. PER DDC-421	DE	AK	JA
4	1/20/69	REV. PER DDC-215	DE	AK	JA
5	2/19/69	REV. PER DDC-362	AK	AK	JA
6	3/10/69	REV. PER DDC-224	AK	AK	JA
7	3/10/69	ACT. VALVE NO. 12-V-21-55	DE	AK	JA
8	3/10/69	REVISED PER DCR-156	AK	AK	JA
9	3/10/69	REMOVED SYS # 2144 & 2145	AK	AK	JA
10	3/10/69	REMOVED VALVE NO. 12-V-21-55	AK	AK	JA
11	3/10/69	REVISED AS NOTED ON REVISION SHEET	AK	AK	JA
12	3/10/69	FINAL DESIGN REVIEW I REVIEWED AS NOTED ON REV. SHEET. ADDED VALVE NO. 12-V-21-57	AK	AK	JA
13	3/10/69	ACT. VALVE NO. 12-V-21-57	AK	AK	JA
14	3/10/69	ADDED VALVE NO. 12-V-21-57	AK	AK	JA
15	3/10/69	REVISED AS NOTED ON REVISION SHEET	AK	AK	JA
16	3/10/69	ISSUED FOR CONSTRUCTION	AK	AK	JA
17	3/10/69	REVISED AS NOTED ON REVISION SHEET	AK	AK	JA
18	3/10/69	REVISED FOR PIPE FABRICATION	AK	AK	JA
19	3/10/69	REVISED AS NOTED ON REVISION SHEET	AK	AK	JA
20	3/10/69	ISSUED FOR PIPE FABRICATION	AK	AK	JA
21	3/10/69	ISSUED FOR APPROVAL	AK	AK	JA
22	3/10/69	ISSUED FOR APPROVAL	AK	AK	JA
23	3/10/69	ISSUED FOR APPROVAL	AK	AK	JA
24	3/10/69	ISSUED FOR APPROVAL	AK	AK	JA

BECHTEL SAN FRANCISCO

DUANE ARNOLD ENERGY CENTER - UNIT NO. 1  
IOWA ELECTRIC LIGHT AND POWER COMPANY  
CEDAR RAPIDS, IOWA

P. & I.D.  
CORE SPRAY SYSTEM

JOB No.	DRAWING No.	REV.
7884	M-121	14

REGULATORY DOCKET FILE COPY

FOR INFORMATION ONLY

TI APERTURE CARD

Scale NONE

Control # 8106-10405

Drawn by J. S. ...

Checked by ...

Approved by ...

Regulatory Docket File