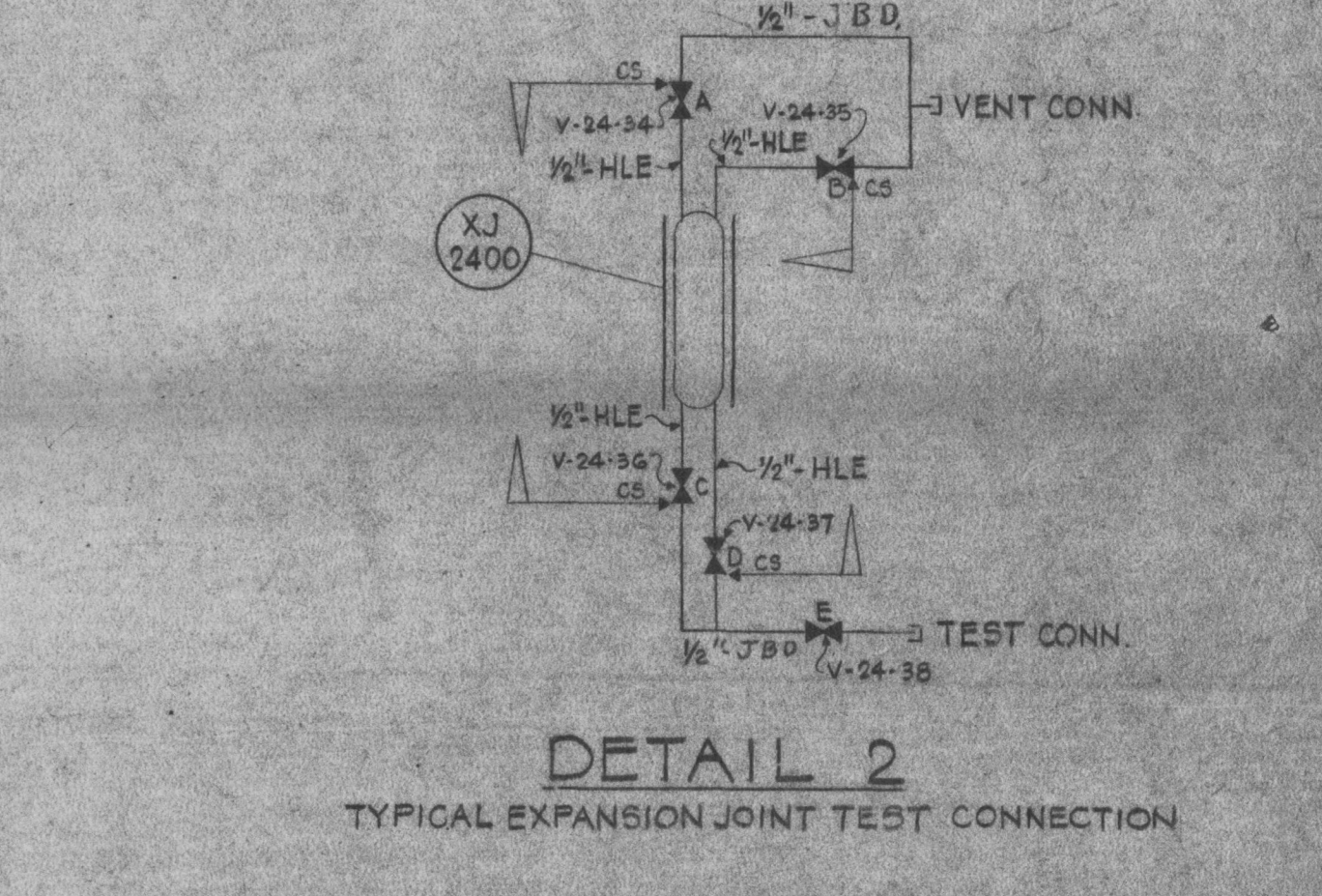
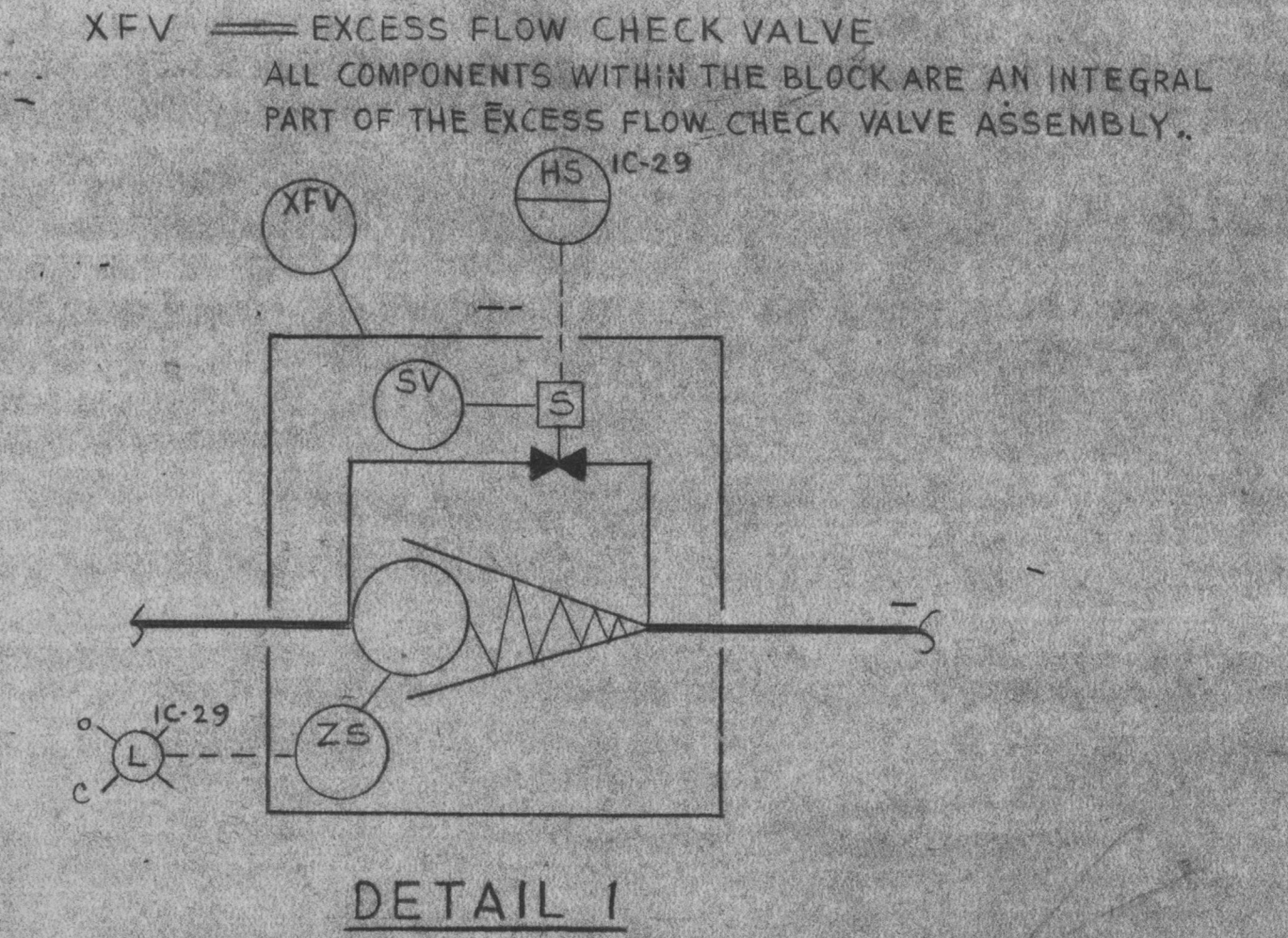
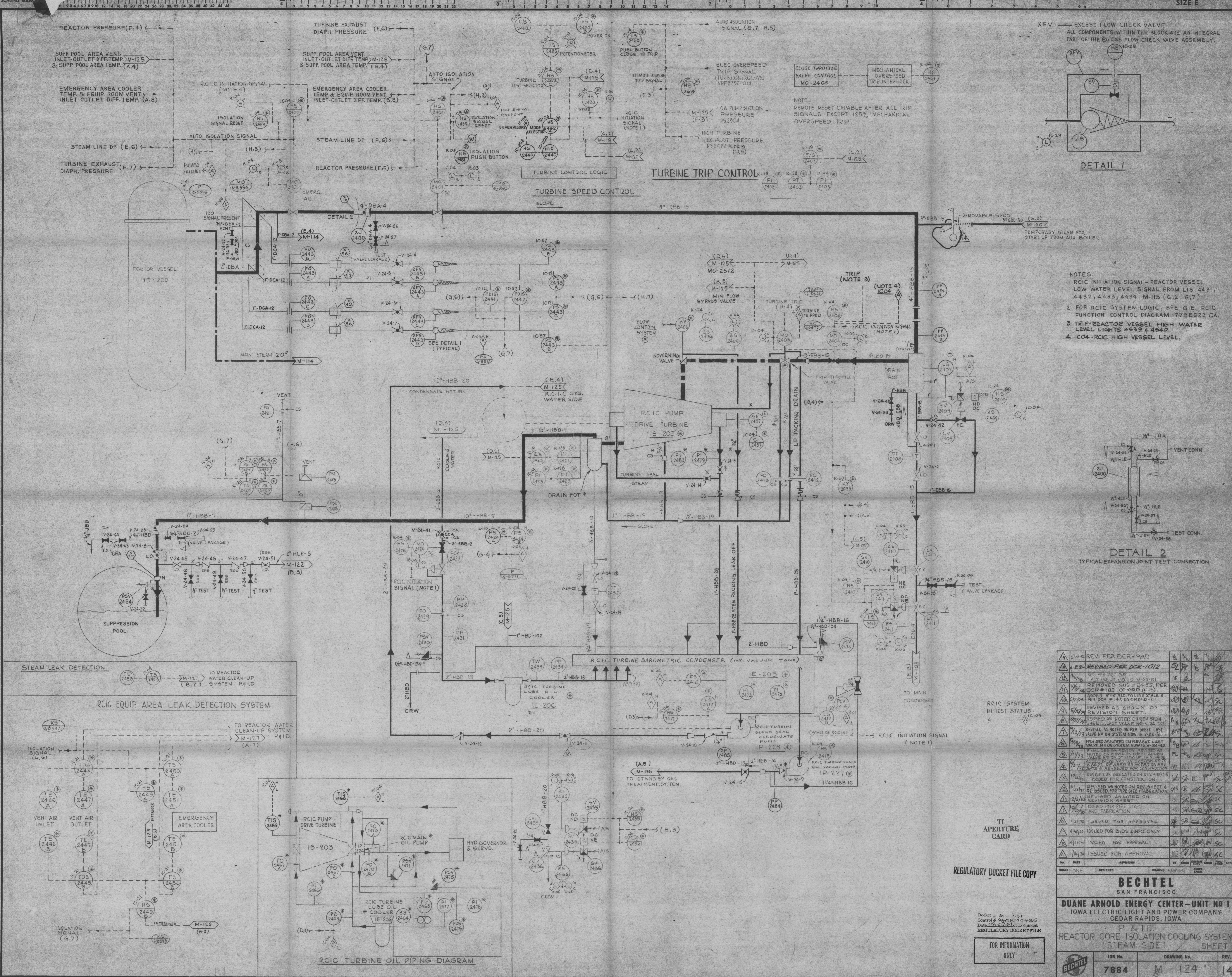


This drawing and the design it covers are the property of BECHTEL. They are hereby loaned and on the borrower's express agreement that they will not be reproduced, copied, loaned, exhibited, or used except in the limited way and private use permitted by any written consent given by the lender to the borrower.



- NOTES:
1. RCIC INITIATION SIGNAL - REACTOR VESSEL LOW WATER LEVEL SIGNAL FROM LIS 4431, 4432, 4433, 4434 M-115 (G, I, G, I).
 2. FOR RCIC SYSTEM LOGIC, SEE G.E. RCIC FUNCTION CONTROL DIAGRAM 779EG22 CA.
 3. TRIP - REACTOR VESSEL HIGH WATER LEVEL LIGHTS 4539 & 4540.
 4. IC04 - RCIC HIGH VESSEL LEVEL.

NO.	DATE	REVISIONS	BY	CHKD	APPV
1	10/22/80	REV. PER DCR-940
2	11/18/80	REVISED PER DCR-1012
3	1/14/81	LAST VALVE AND IS V-24-51
4	1/14/81	REMOVED S05 & 2453, PER DCR # 165 CO-ORD. (E-2)
5	1/14/81	ADDED 3" X 8' REVISION SHEET PER DCR # 147, CO-ORD. D-7.
6	5/14/81	REVISED AS SHOWN ON REVISION SHEET.
7	5/14/81	REVISED AS NOTED ON REVISION SHEET. LAST VALVE NP-V-24-52
8	5/14/81	REVISED AS NOTED ON REV SHEET LAST VALVE NP ON SYSTEM NOW IS V-24-51
9	5/14/81	FINAL DESIGN REVISION NUMBER 10 ADDED ON REVISION SHEET. ADDED 3" X 8' REVISION SHEET PER DCR # 147, CO-ORD. D-7.
10	5/14/81	ADDED 3" X 8' REVISION SHEET PER DCR # 147, CO-ORD. D-7.
11	5/14/81	REVISED AS NOTED ON REV SHEET & ISSUED FOR PIPE SIZE FABRICATION
12	12/17/80	REVISED AS NOTED ON REVISION SHEET.
13	1/14/81	ISSUED FOR APPROVAL
14	1/14/81	ISSUED FOR APPROVAL
15	1/14/81	ISSUED FOR APPROVAL
16	1/14/81	ISSUED FOR APPROVAL
17	1/14/81	ISSUED FOR APPROVAL
18	1/14/81	ISSUED FOR APPROVAL
19	1/14/81	ISSUED FOR APPROVAL
20	1/14/81	ISSUED FOR APPROVAL

REGULATORY DOCKET FILE COPY

FOR INFORMATION ONLY

BECHTEL
SAN FRANCISCO

DUANE ARNOLD ENERGY CENTER - UNIT NO 1
IOWA ELECTRIC LIGHT AND POWER COMPANY
CEDAR RAPIDS, IOWA

P & ID
REACTOR CORE ISOLATION COOLING SYSTEM (STEAM SIDE) SHEET 1

JOB No.	DRAWING No.	REV.
7884	M-124	14