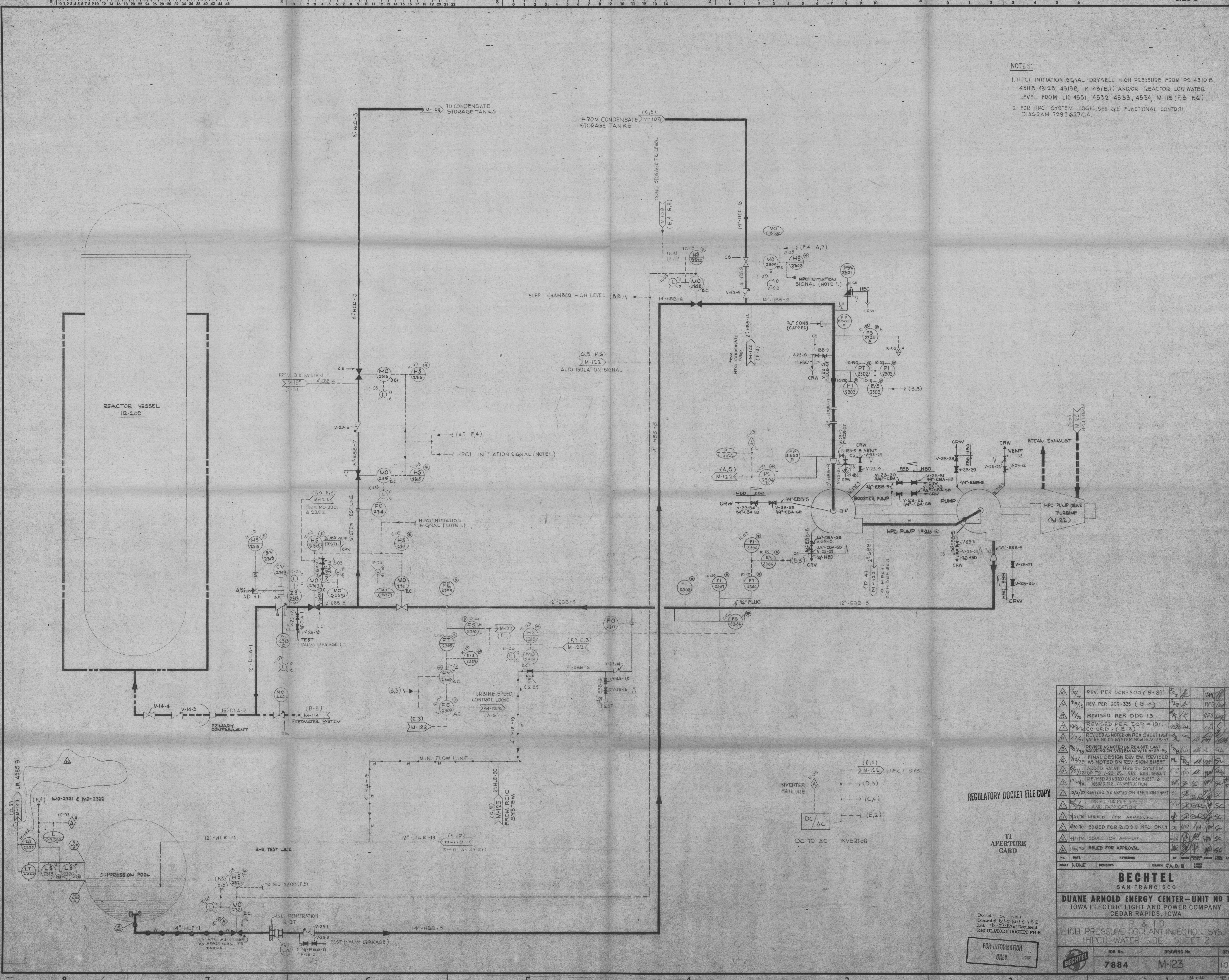


This drawing and the design it covers are the property of BECHTEL. They are hereby loaned, and on the borrower's express agreement that they will not be reproduced, copied, loaned, exhibited, or used except in the limited way and private use permitted by any written consent given by the lender to the borrower.



- NOTES:**
1. HPCI INITIATION SIGNAL - DRYWELL HIGH PRESSURE FROM PS 4310 B, 4311 B, 4312 B, 4313 B, M-143 (E,7) AND/OR REACTOR LOW WATER LEVEL FROM LI5 4531, 4532, 4533, 4534, M-115 (F,3 F,6)
 2. FOR HPCI SYSTEM LOGIC, SEE G/E FUNCTIONAL CONTROL DIAGRAM 729E 627CA.

REGULATORY DOCKET FILE COPY

TI APERTURE CARD

FOR INFORMATION ONLY

REV.	DATE	REVISION	BY	CHKD	APPD
1	10/27/70	REV. PER DCR-500 (B-8)
2	11/19/70	REV. PER DCR-335 (B-8)
3	1/17/71	REVISED PER DDC 13
4	4/6/71	REVISED PER DCR # 191
5	1/17/71	REVISED AS NOTED ON REV. SHEET LAST
6	1/17/71	REVISED AS NOTED ON REV. SHEET LAST
7	1/17/71	REVISED AS NOTED ON REV. SHEET LAST
8	1/17/71	FINAL DESIGN REVIEW, REVISED AS NOTED ON REVISION SHEET
9	1/17/71	ADDED VALVE NGS ON SYSTEM UP TO V-23-25. SEE REV. SHEET
10	1/17/71	REVISED AS NOTED ON REV. SHEET
11	1/17/71	ISSUED FOR CONSTRUCTION
12	10/27/70	REVISED AS NOTED ON REVISION SHEET
13	1/17/71	ISSUED FOR APPROVAL
14	1/17/71	ISSUED FOR APPROVAL
15	1/17/71	ISSUED FOR APPROVAL
16	1/17/71	ISSUED FOR APPROVAL

SCALE NONE

DESIGNED BY E.A.D. II

DRAWN BY E.A.D. II

CHECKED BY E.A.D. II

APPROVED BY E.A.D. II

BECHTEL
SAN FRANCISCO

DUANE ARNOLD ENERGY CENTER - UNIT NO 1
IOWA ELECTRIC LIGHT AND POWER COMPANY
CEDAR RAPIDS, IOWA

P. & I.D.
HIGH PRESSURE COOLANT INJECTION SYS.
(HPCI) WATER SIDE SHEET 2

JOB No.	DRAWING No.	REV.
7884	M-23	10