

CORPORATE OFFICE

EMERGENCY OPERATIONS FACILITY

8006250273

- PROXIMITY TO LINN COUNTY EOC
- PROXIMITY TO EMERGENCY NEWS CENTER
- PROXIMITY TO LOCAL NEWS CENTERS
- PROXIMITY TO HOTEL AND FOOD FACILITIES

- NORMAL WORK LOCATION FOR EMERGENCY TEAM
- EMERGENCY EQUIPMENT IN NORMAL USE
- ALL RECORDS, SERVICES AVAILABLE
- OTHER COMPANY SERVICES AVAILABLE
- HABITABLE - ALTERNATE NOT REQUIRED

Emergency Response Facilities

| Center                              | Location                        | Activation Required?                                      | Occupants                          |  |  | Function  | Data Display  | Habitability  | Back-up If Not Habitable  |
|-------------------------------------|---------------------------------|---|------------------------------------|--|--|---|---|---|---|
|                                     |                                 |   | In Charge                          | Number   | Skills   |   |   |   |   |
| Emergency Operations Facility (EOF) | Near Site (within about 1 mile) | Yes, for Alert, Site Emergency or General Emergency Class | Senior Plant or Corporate Official | 10 NRC, including Regional Director, 20 utility including radiological accident assessment and Corporate management, 5 State and local<br><br>(periodic) | Corporate Management, Radiological Accident Assessment | 1. Overall Management of utility Resources<br>2. Analysis of Plant effluents met; offsite monitoring for offsite action decisions<br>3. Briefing location for offsite officials and press pools | Direct display of radiological and meteorological parameters. At least that provided to NRC | Shielding against direct radiation & ventilation isolation capability | Alternate EOF required away from site; no habitability requirements for alternate |

Excerpt, D. Eisenhut Letter 4/25/80

|                   |   |   |   |  |   |   |   |           |      |
|-------------------|---|---|---|--|---|---|---|-----------|------|
| Iowa Electric EOF | 10 Miles From Site<br>-----<br>Existing | ✓ | ✓ | Approximately 75 on 14<br><br>Approximately 300 on 6 | ✓ | ✓ | ✓ | Habitable | N.A. |
|-------------------|---|---|---|--|---|---|---|-----------|------|

14 TH FLOOR

ELEVATORS

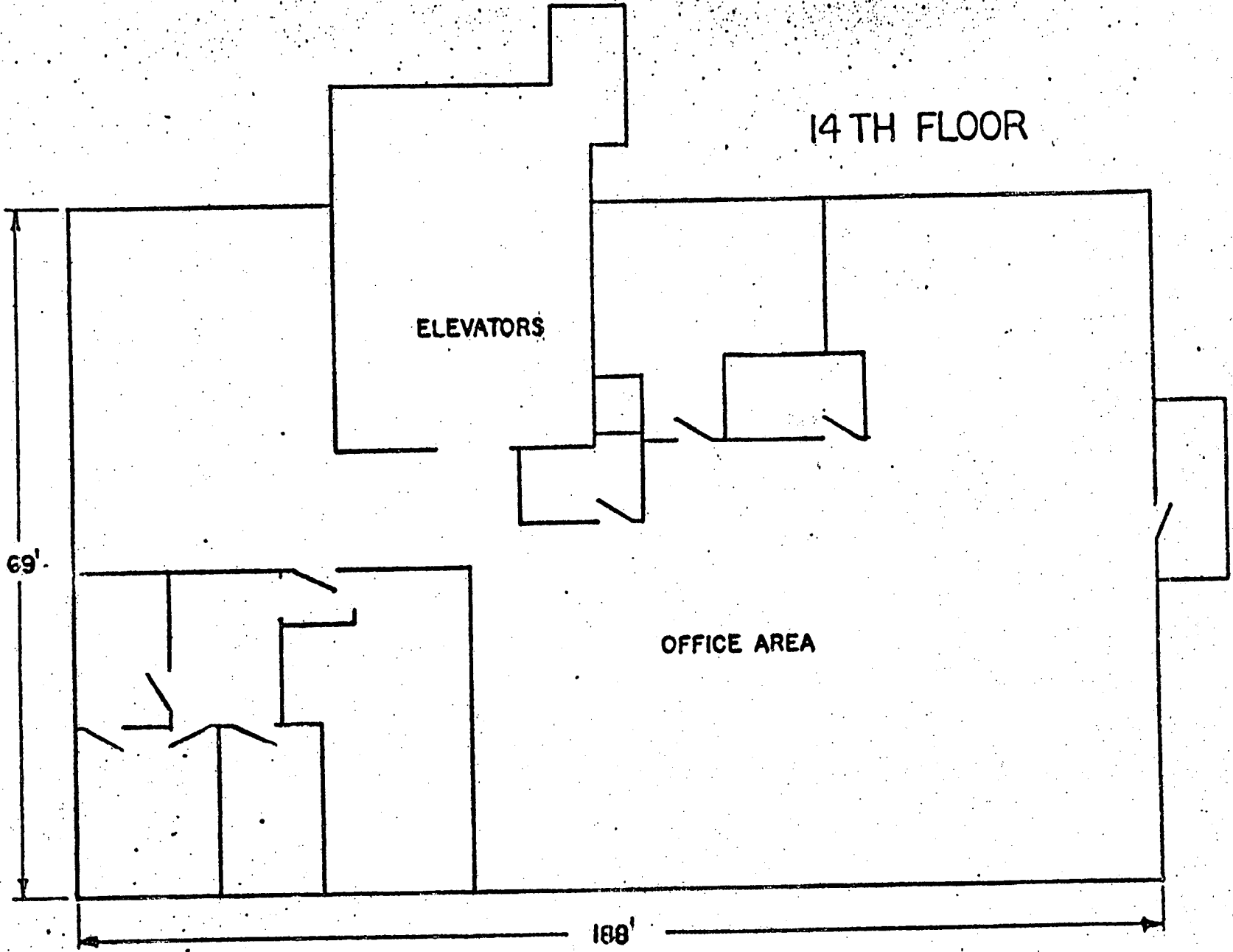
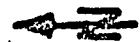
OFFICE AREA

2 ND AVENUE

69'

188'

1 ST STREET



6 TH FLOOR

2ND AVENUE

69'

ELEVATORS

LOUNGE

CLASS ROOMS

DINING AREA

AUDIO-VISUAL

KITCHEN

AUDITORIUM

STAGE

188'

1ST STREET

