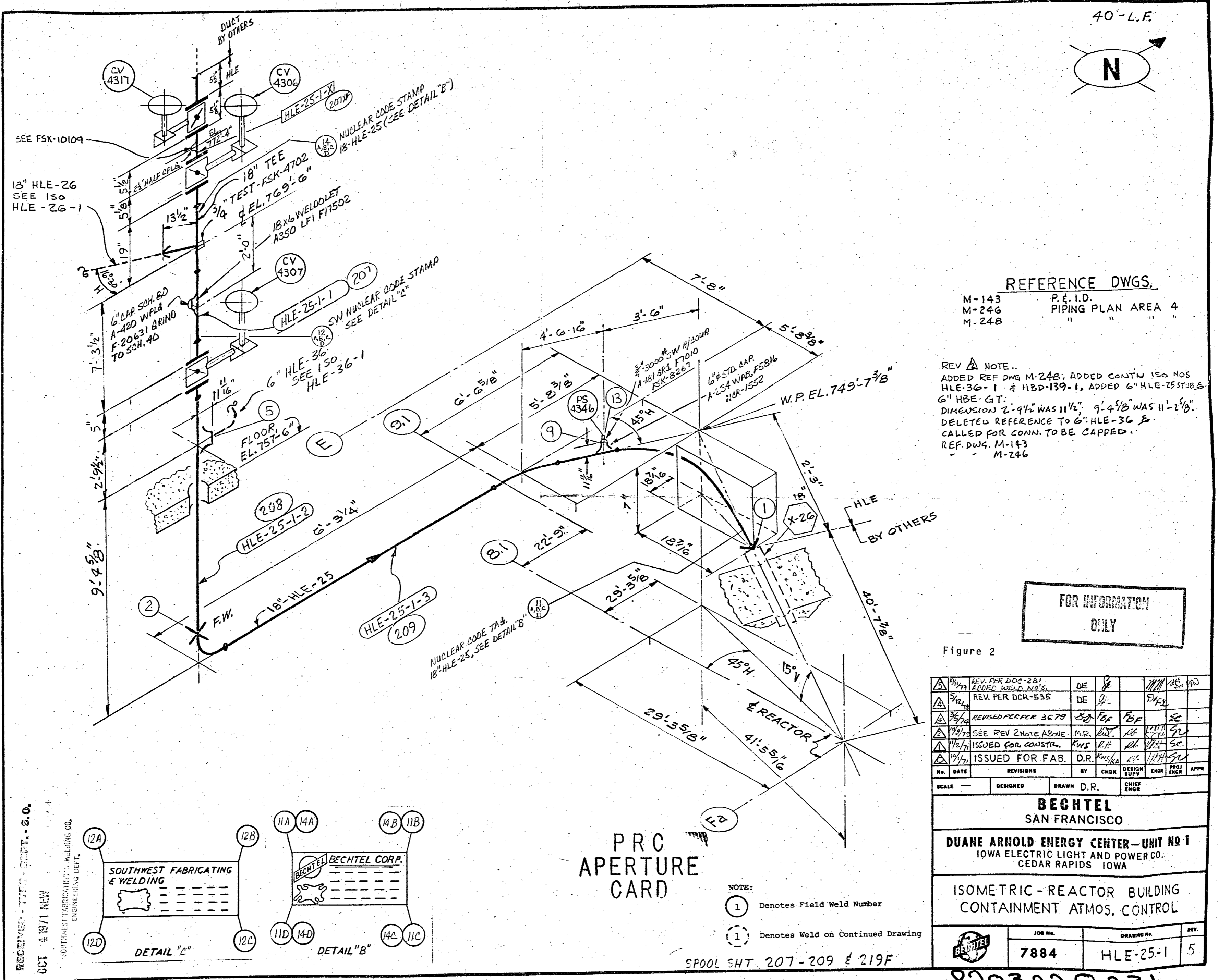
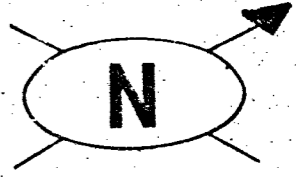


This drawing and the design it covers are the property of BECHTEL. They are merely loaned and on the borrower's express agreement that they will not be reproduced, copied, loaned, exhibited, or used except in the limited way and private use permitted by the lender to the borrower.



40'-L.F.



REFERENCE DWGS.

M-143 P.E.I.D.
M-246 PIPING PLAN AREA 4
M-248 " " "

REV A NOTE..
ADDED REF DWG M-248; ADDED CONTN ISO NOS
HLE-36-1 & HBD-139-1, ADDED 6" HLE-25 STUB &
6" HBE-GT.
DIMENSION 2'-9 1/2" WAS 11 1/2"; 9'-4 5/8" WAS 11'-2 5/8".
DELETED REFERENCE TO 6" HLE-36 &
CALLED FOR CONN. TO BE CAPPED..
REF. DWG. M-143
M-246

FOR INFORMATION
ONLY

Figure 2

REV.	DATE	REVISIONS	BY	CHKD.	DESIGN SUPV.	ENGR.	PROJ. ENGR.	APPR.
1	5/14/74	REV. PER DOC-281 ADDED WELD NOS.	DE					
2	5/14/74	REV. PER DCR-535	DE					
3	7/2/74	REVISED PER FOR 3C79	FBF	FBF				
4	7/2/74	SEE REV 2 NOTE ABOVE.	M.R.					
5	11/2/74	ISSUED FOR CONSTR.	RWS	LH				
6	1/17/75	ISSUED FOR FAB.	D.R.					

SCALE	DESIGNED	DRAWN	D.R.	CHIEF ENGR.

BECHTEL SAN FRANCISCO		
DUANE ARNOLD ENERGY CENTER - UNIT NO 1 IOWA ELECTRIC LIGHT AND POWER CO. CEDAR RAPIDS IOWA		
ISOMETRIC - REACTOR BUILDING CONTAINMENT ATMOS. CONTROL		
JOB NO.	DRAWING NO.	REV.
7884	HLE-25-1	5

PRC
APERTURE
CARD

- NOTE:
- ① Denotes Field Weld Number
 - ① Denotes Weld on Continued Drawing

SPOOL SHT 207-209 & 219F

RECEIVED - TYPING DEPT. - S.O.
OCT 4 1971 NEW

SOUTHWEST FABRICATING & WELDING CO.
ENGINEERING DEPT.

