

6.0 ADMINISTRATIVE CONTROLS

6.1 MANAGEMENT - AUTHORITY AND RESPONSIBILITY

- 6.1.1 The Plant Superintendent-Nuclear has primary responsibility for the safe operation of the DAEC, and reports to the Manager-Nuclear Division.
- 6.1.2 The overall responsibility for the fire protection program for DAEC is assigned to the Manager-Nuclear Division. The DAEC Plant Superintendent-Nuclear is responsible for directing the operating plant fire protection program.
- 6.1.3 The Quality Control Supervisor is responsible for implementation of the Quality Assurance Program at the DAEC and reports to the Manager-Corporate Quality Assurance.

8509300151 850924  
PDR ADCK 05000331  
P PDR

## 6.2 PLANT STAFF ORGANIZATION

6.2.1 The plant staff organization shall conform to that shown in Figure 6.2-1.

6.2.2 The following manning requirements shall be met:

1. All CORE ALTERATIONS shall be directly supervised by either a Senior Reactor Operator or Senior Reactor Operator Limited to Fuel Handling who has no other concurrent responsibilities during this operation.

2. At all times when there is fuel in the reactor:

a. A senior reactor operator shall be on the plant site.

b. A reactor operator shall be in the control room.

c. Two reactor operators shall be in the control room during startup, scheduled shutdown, and during recovery from trips caused by transients or emergencies.

d. Minimum operating shift crew compositions shall conform to those shown in Table 6.2-1.

TABLE 6.2-1

## MINIMUM SHIFT CREW PERSONNEL AND LICENSE REQUIREMENTS

<u>DAEC Job Title</u>	<u>Reactor Mode</u>	
	<u>Other Than Cold Shutdown</u>	<u>Cold Shutdown</u>
"A" Operations Shift Supervisor	1 - SRO(1)	1 - SRO(1)
"B" Operations Shift Supervisor	1 - SRO(1)(2)	
Nuclear Station Operating Engineer	1 - RO	1 - RO
Assistant Nuclear Station Operating Engineer	1 - RO	
Second Assistant Nuclear Station Operating Engineer	1	1
Nuclear Station Auxiliaries Engineer	1	
Shift Technical Advisor	<u>1(2)</u>	<u>None Required</u>
Minimum Total Personnel	<u><u>7</u></u>	<u><u>3</u></u>

SRO - Senior Reactor Operator

RO - Reactor Operator

Substitutions - without changing minimum total personnel requirements:

- a. Individuals with senior reactor operator license may substitute for reactor operator or nonlicensed position.
- b. Individuals with reactor operator license may, if otherwise qualified, substitute for nonlicensed position.

NOTES

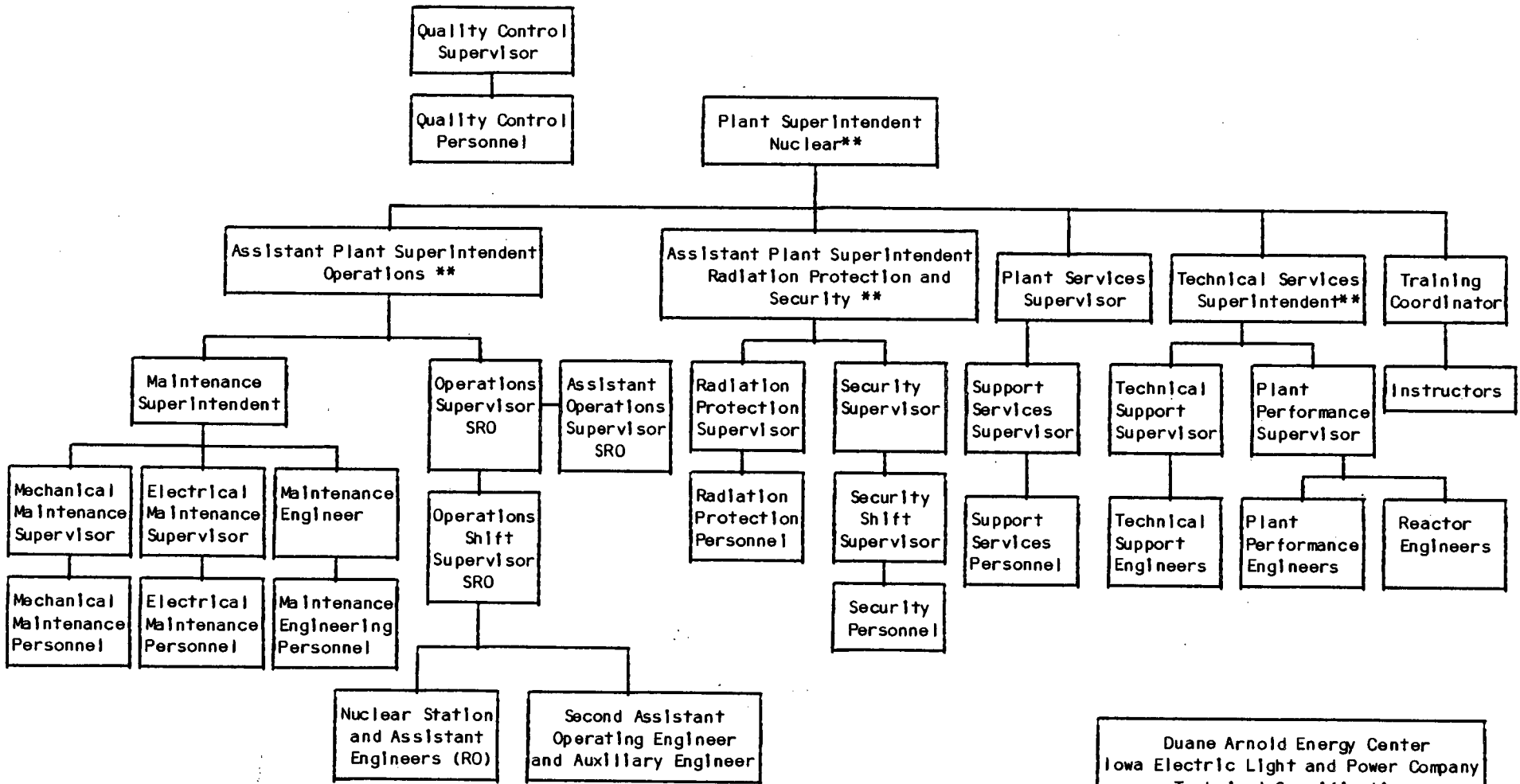
- (1) Does not include the SRO or SRO Limited to Fuel Handling, Supervising Core Alterations.
- (2) Not required while in the Refuel Mode.

RTS-190

6.2-3

09/85

DAEC-1



SRO - Senior Reactor Operator

RO - Reactor Operator

\*\* - According to ANSI N18.1-1971, either the Plant Superintendent or one of his designated principal alternates shall have the experience and training normally required for a Senior Reactor Operator's license examination. (At least one of the people in the positions noted above shall meet that requirement.)

Duane Arnold Energy Center  
Iowa Electric Light and Power Company  
Technical Specifications

---

DAEC Nuclear Plant Staffing  
Figure 6.2-1

6.5 REVIEW AND AUDIT

6.5.1 Operations Committee

6.5.1.1 Function

The Operations Committee shall function to advise the Plant Superintendent - Nuclear on all matters related to nuclear safety.

6.5.1.2 Composition

The Operations Committee shall be composed of selected Assistant Plant Superintendents, Superintendents, Supervisors and personnel from the following departments: Operations, Maintenance, Plant Performance, Radiation Protection, Quality Control, and Technical Support.

The Assistant Plant Superintendent - Operations shall act as the Chairman. One or more of the members shall be designated as Vice Chairman.

6.5.1.3 Alternates

All alternate members shall be appointed in writing by the Plant Superintendent-Nuclear to serve on a permanent basis; however, no more than three alternates shall participate as voting members in Operations Committee activities at any one time.

- e. Investigation of all violations of the Technical Specifications including the preparation and forwarding of reports covering evaluation and recommendations to prevent recurrence to the Manager-Nuclear Division and to the Chairman of the Safety Committee.
- f. Review of all Reportable Events.
- g. Review of facility operations to detect potential safety hazards.
- h. Performance of special reviews, investigations or analyses and reports thereon as requested by the Chairman of the Safety Committee.
- i. Review of the Plant Security Plan and implementing procedures.
- j. Review of the Emergency Plan and implementing procedures.

#### 6.5.1.7 Authority

The Operations Committee shall:

- a. Recommend to the Plant Superintendent-Nuclear written approval or disapproval of items considered under Specification 6.5.1.6 (a) through (d) above.

b. Render determinations in writing with regard to whether or not each item considered under 6.5.1.6 (a) through (e) above constitutes an unreviewed safety question.

c. Provide written notification within 24 hours to the Manager-Nuclear Division and the Safety Committee of disagreement between the Operations Committee and the Plant Superintendent-Nuclear; however, the Plant Superintendent-Nuclear shall have responsibility for resolution of such disagreements pursuant to Specification 6.1.1 above.

#### 6.5.1.8 Record

The Operations Committee shall maintain written minutes of each meeting and copies shall be provided to the Manager-Nuclear Division and the Chairman of the Safety Committee.

#### 6.5.2 Safety Committee

##### 6.5.2.1 Function

The Safety Committee shall function to provide independent review and audit of designated activities in the areas of:

- a. Nuclear power plant operations.
- b. Nuclear Engineering.

6.6 REPORTABLE EVENT ACTION

- 6.6.1 The following actions shall be taken for REPORTABLE EVENTS.
- a. Each REPORTABLE EVENT shall be reviewed by the Operations Committee, and a report shall be submitted to the Safety Committee and the Manager-Nuclear Division and
  - b. The Commission shall be notified and a report submitted pursuant to the requirements of Section 50.73 to 10 CFR Part 50.



6.7 ACTION TO BE TAKEN IF A SAFETY LIMIT IS EXCEEDED

- 6.7.1 If a safety limit is exceeded, the reactor shall be shut down and reactor operation shall only be resumed when authorized by the NRC.
- 6.7.2 An immediate report shall be made to the Manager-Nuclear Division and the Safety Committee. The Manager-Nuclear Division shall promptly report the circumstances to the NRC as specified in Subsection 6.11, Plant Reporting Requirements.
- 6.7.3 A complete analysis of the circumstances leading up to and resulting from the situation together with recommendations to prevent a recurrence shall be prepared by the Operations Committee. This report shall be submitted to the Manager-Nuclear Division and to the Safety Committee. Appropriate analyses or reports will be submitted to the NRC by the Manager-Nuclear Division as specified in Subsection 6.11, Plant Reporting Requirements.