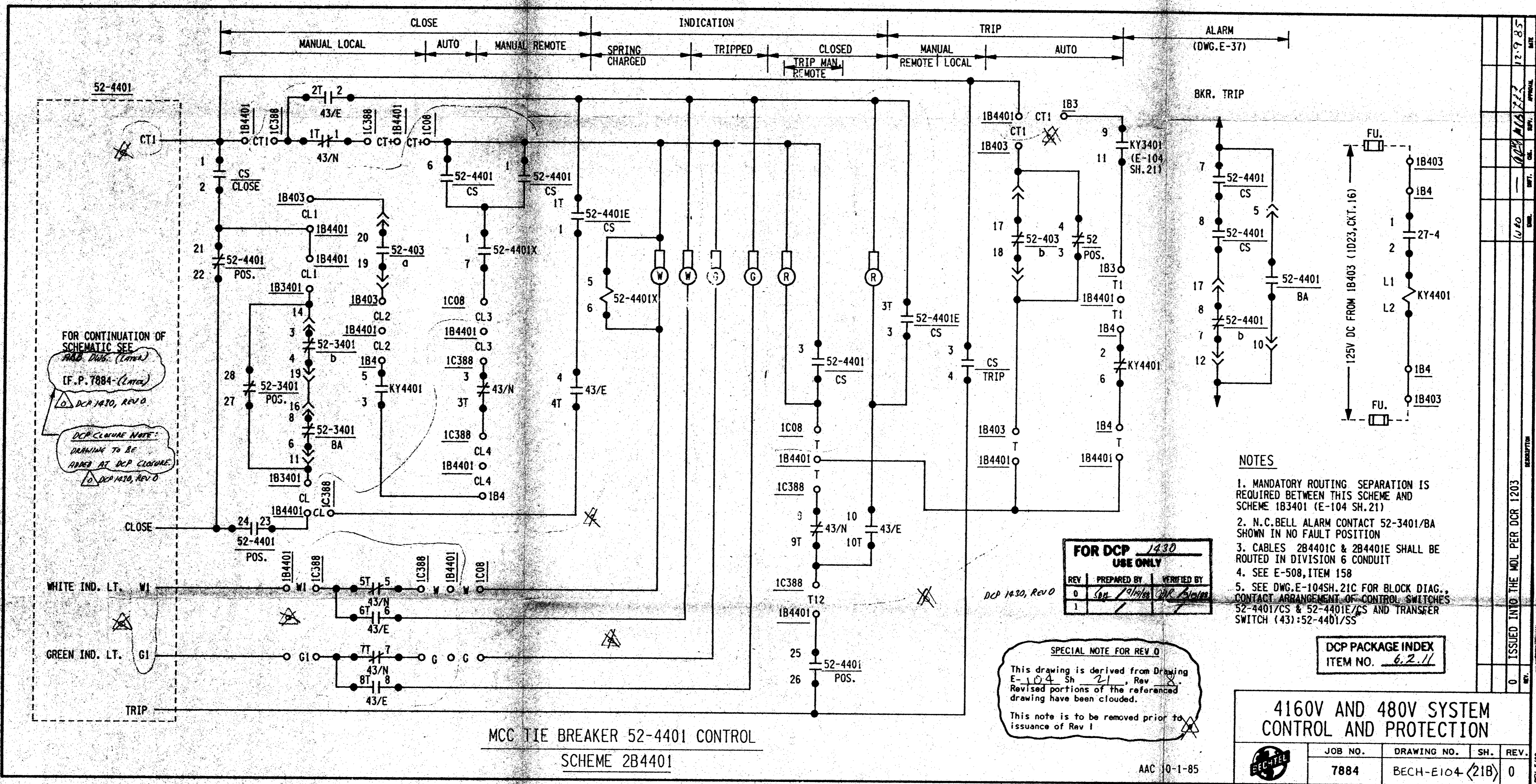


This drawing and the design it covers are the property of BECHTEL. They are hereby loaned and on the borrower's express agreement that they will not be reproduced, copied, loaned, exhibited, or used except in the limited way and for the purposes intended by the lender to the borrower.



FOR CONTINUATION OF SCHEMATIC SEE
 (F.P. 7884 - Contn)
 DCP 1430, REV 0
 DCP CHANGE NOTE:
 DRAWING TO BE
 ADDED AT DCP CLOSURE
 DCP 1430, REV 0

FOR DCP 1430 USE ONLY		
REV	PREPARED BY	VERIFIED BY
0	SEP 7/1988	DKR 10/1988
1		

SPECIAL NOTE FOR REV 0
 This drawing is derived from Drawing E-104 Sh. 21, Rev 0. Revised portions of the referenced drawing have been clouded.
 This note is to be removed prior to issuance of Rev 1

- NOTES**
- MANDATORY ROUTING SEPARATION IS REQUIRED BETWEEN THIS SCHEME AND SCHEME 1B3401 (E-104 SH. 21)
 - N.C. BELL ALARM CONTACT 52-3401/BA SHOWN IN NO FAULT POSITION
 - CABLES 2B4401C & 2B4401E SHALL BE ROUTED IN DIVISION 6 CONDUIT
 - SEE E-508, ITEM 158
 - SEE DWG. E-104SH. 21C FOR BLOCK DIAG. CONTACT ARRANGEMENT OF CONTROL SWITCHES 52-4401/CS & 52-4401E/CS AND TRANSFER SWITCH (43):52-4401/SS

DCP PACKAGE INDEX
 ITEM NO. 6.2.11

4160V AND 480V SYSTEM CONTROL AND PROTECTION			
JOB NO.	DRAWING NO.	SH.	REV.
7884	BECH-E104 (21B)	0	0

DATE	12-9-85
APP'D	
CHK'D	
ISSUED INTO THE MOL PER DCR 1203	

FOR INFORMATION ONLY

881020249

SI APERTURE CARD

P. Inv # 50-30-37
 Contn # 881020249
 of Document
 MANUFACTORY DRAWING FILE