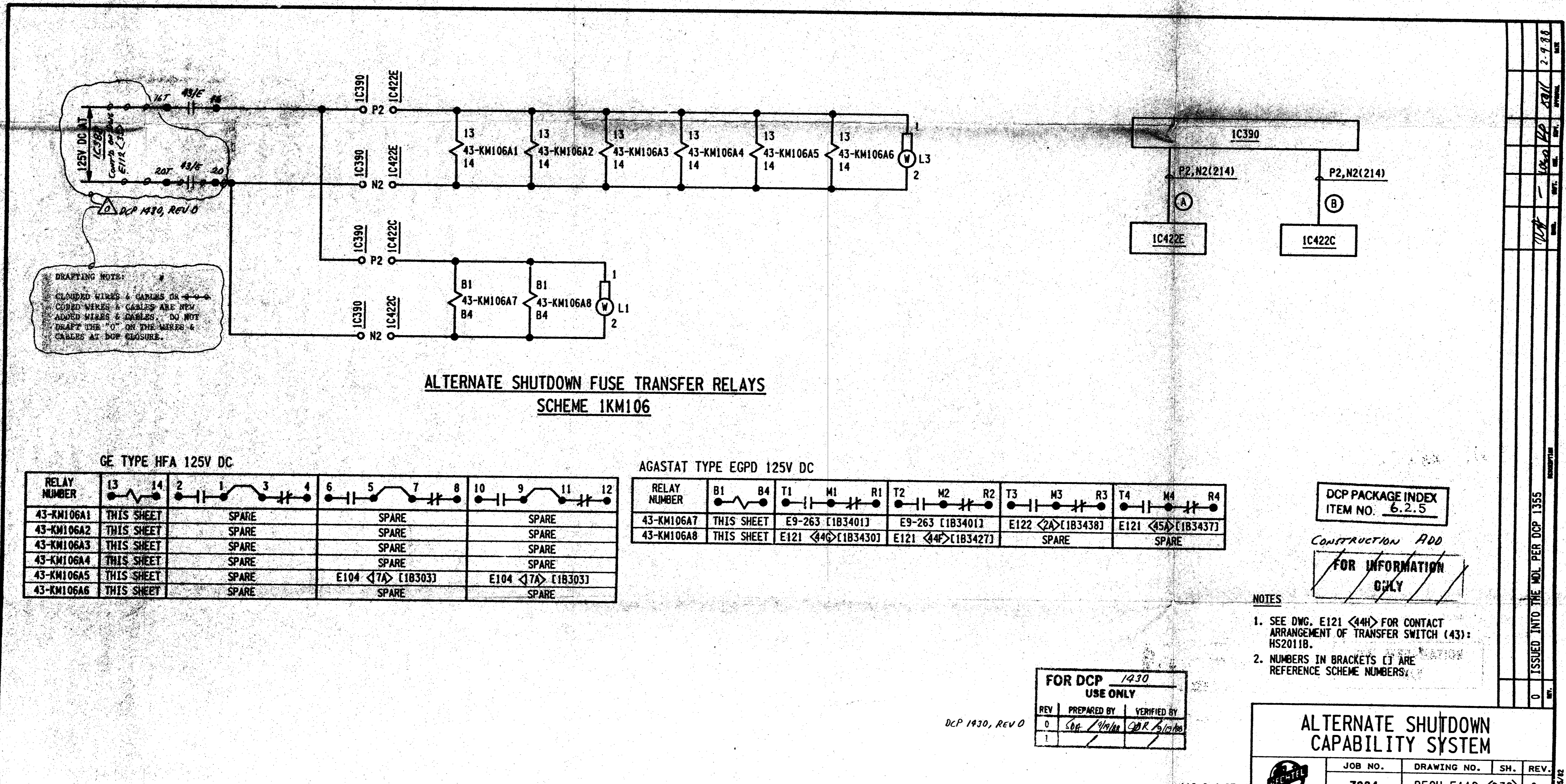


This drawing and the design it covers are the property of BORTB. They are hereby loaned and in the borrower's express agreement that they will not be reproduced, copied, loaned, exhibited, or used in any way without the written consent given by the lender to the borrower.



DRAFTING NOTE:
 CLOUDED WIRES & CABLES OR
 CLOUDED WIRES & CABLES ARE NEW
 ADDED WIRES & CABLES. DO NOT
 DRAFT THE "O" ON THE WIRES &
 CABLES AT DCP CLOSURE.

**ALTERNATE SHUTDOWN FUSE TRANSFER RELAYS
 SCHEME 1KM106**

GE TYPE HFA 125V DC			
RELAY NUMBER	13	14	2
43-KM106A1	THIS SHEET	SPARE	SPARE
43-KM106A2	THIS SHEET	SPARE	SPARE
43-KM106A3	THIS SHEET	SPARE	SPARE
43-KM106A4	THIS SHEET	SPARE	SPARE
43-KM106A5	THIS SHEET	SPARE	E104 <7A> [18303]
43-KM106A6	THIS SHEET	SPARE	SPARE

AGASTAT TYPE EGPD 125V DC							
RELAY NUMBER	B1	B4	T1	M1	R1	T2	M2
43-KM106A7	THIS SHEET	E9-263 [183401]	E9-263 [183401]	E122 <2A> [183438]	E121 <4S> [183437]		
43-KM106A8	THIS SHEET	E121 <44C> [183430]	E121 <44F> [183427]	SPARE	SPARE		

DCP PACKAGE INDEX
 ITEM NO. 6.2.5

CONSTRUCTION ADD
 FOR INFORMATION ONLY

- NOTES**
- SEE DWG. E121 <44H> FOR CONTACT ARRANGEMENT OF TRANSFER SWITCH (43) HS2011B.
 - NUMBERS IN BRACKETS [] ARE REFERENCE SCHEME NUMBERS.

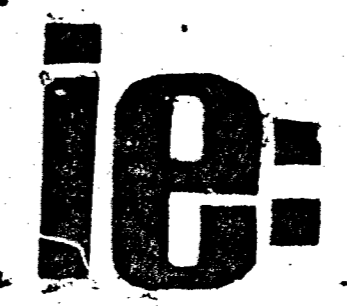
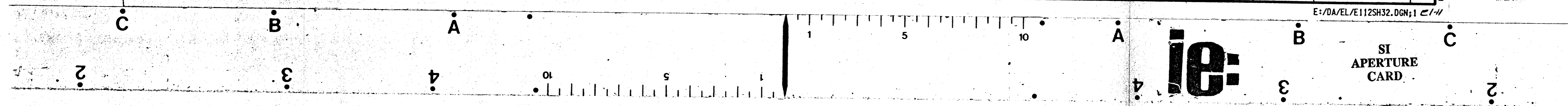
FOR DCP USE ONLY

REV	PREPARED BY	VERIFIED BY
0	CB	DR
1		

ALTERNATE SHUTDOWN CAPABILITY SYSTEM

JOB NO.	DRAWING NO.	SH.	REV.
7884	BECH-E112 <Q32>	0	0

REV	DATE	BY	CHKD	APPV
0				
1	2-9-88	DR	CB	DR



8810120234