

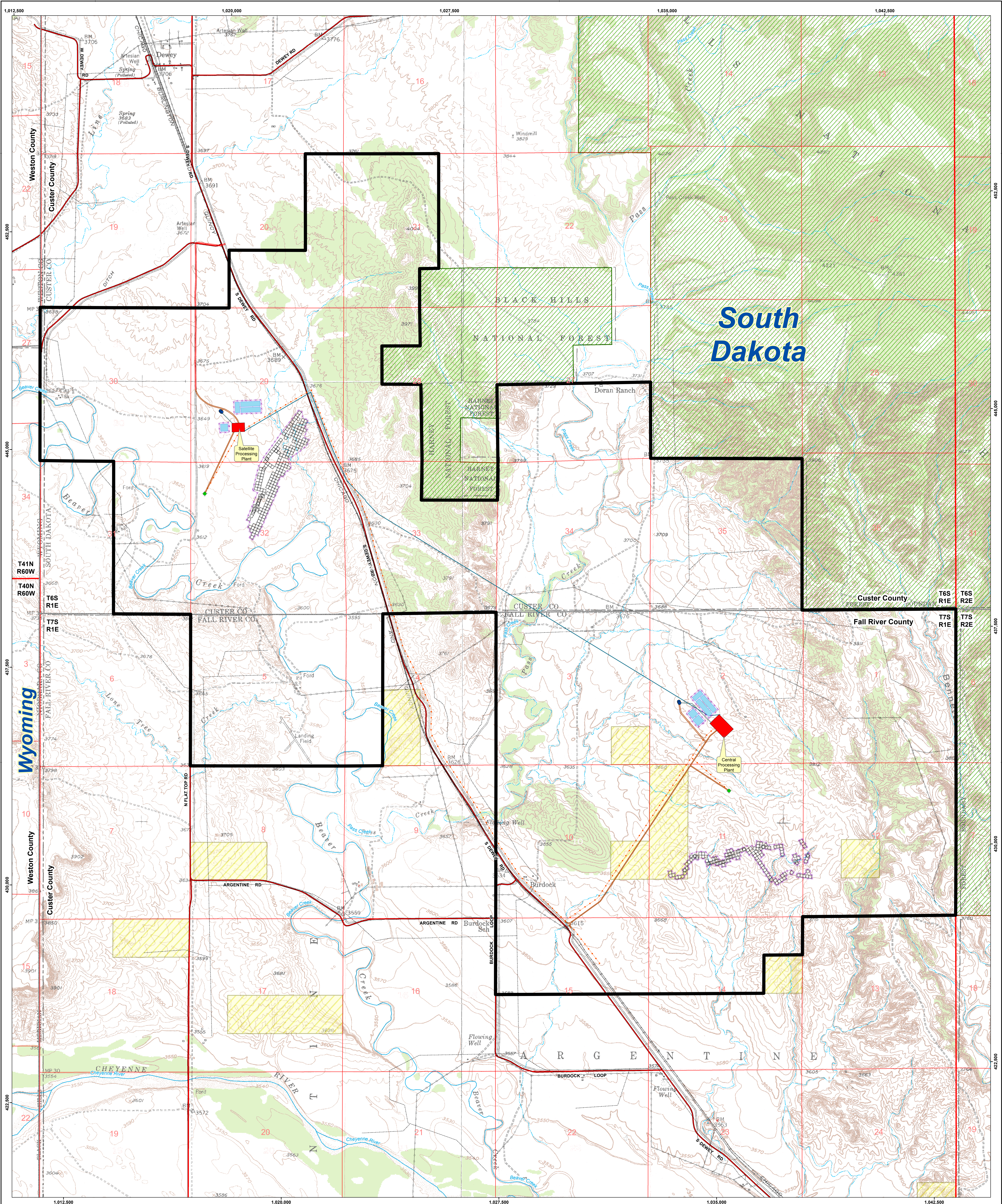
Legend

- Project Boundary
- Processing Plants
- Land Application
- Standby Land Application
- BLM Land
- Ponds
- Black Hills National Forest
- Potential Perimeter Fence
- Ephemeral Streams
- Perennial Streams
- Existing BHEC Powerlines
- Overhead Electric Lines
- Existing Golden West Telephone Lines
- Existing Roads Used for Access
- Access Roads
- BNSF Railroad
- County Roads
- Pipelines
- Madison Well
- Potential Well Field Grid

#	REVISIONS		
	DRAWN	CHECKED	APPROVED

Exhibit 3.1-2
Proposed Facilities and
Potential Initial Well Field Areas
Land Application Well Option
Dewey-Burdock Project

CONSULTANT: 743
 DATE: 22-Jun-2011
 DRAWN: S. Heston
 CHECKED: J. Bonner, J. Mays
 APPROVED: 17-Aug-2010
 DATE: 17-Aug-2010
 FILE: Exhibit 3.1-2.pdf
 PROJECT: NAD 27 South Dakota State Plane South Feet
 DRAWING: P:\Dewey-Burdock\Submittals\WWC NRC TR RA1 June 2011\Exhibit 3.1-2.mxd



Legend

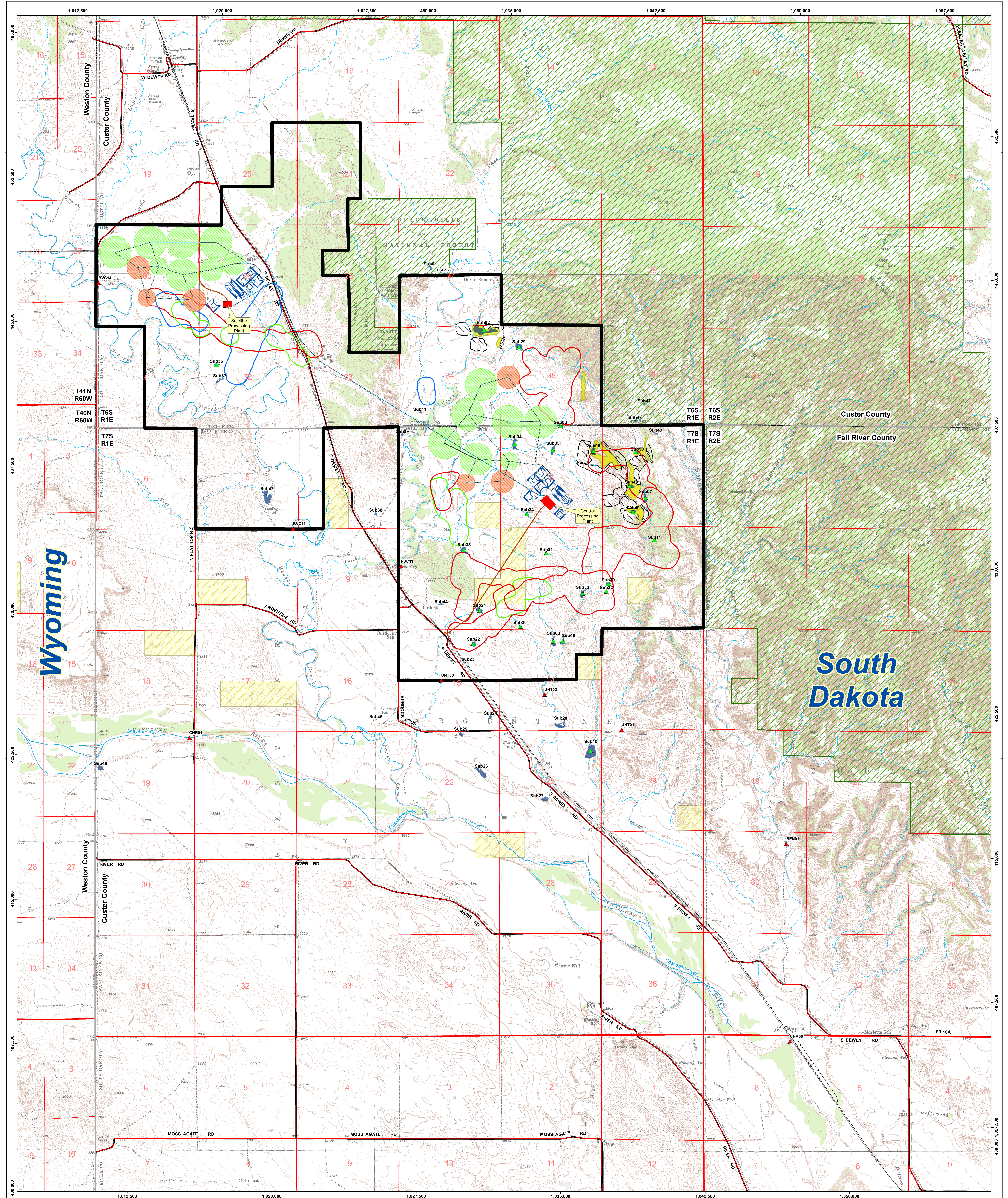
Project Boundary	Processing Plants	Deep Disposal Well
BLM Land	Ponds	Madison Well
Black Hills National Forest	Potential Perimeter Fence	Potential Well Field Grid
Ephemeral Streams	Existing Roads Used for Access	Access Roads
Perennial Streams	Access Roads	BNSF Railroad
Existing BHEC Powerlines	BNSF Railroad	County Roads
Overhead Electric Lines	County Roads	Pipelines
Existing Golden West Telephone Lines	Pipelines	

0 500 1,000 2,000 3,000 4,000
0 250 500 1,000
Feet
Meters

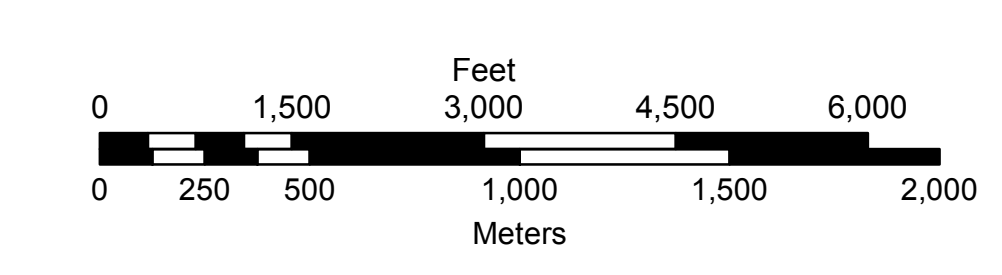
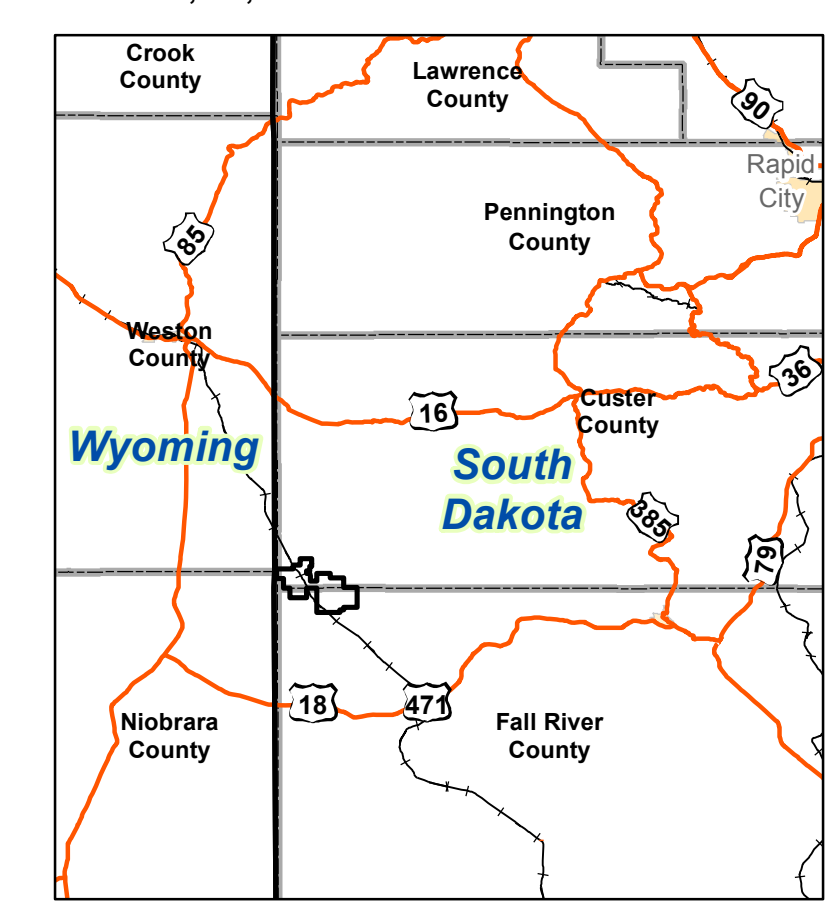
CONSULTANT	REVISIONS			DATE
	#	DRAWN	CHECKED	
741				
742				
743				
744				

DATE	22-Jun-2011	DATE	17-Aug-2010
DRAWN	S. Heston	DATE	17-Aug-2010
CHECKED	J. Bonner, J. Mays	DATE	17-Aug-2010
APPROVED		DATE	17-Aug-2010

Exhibit 3.1-3
Proposed Facilities and Potential Initial Well Field Areas
Deep Disposal Well Option
Dewey-Burdock Project



- Legend**
- Operational Impoundment Sample Sites
 - Processing Plants
 - Land Application
 - Potential Well Field Areas
 - Operational Stream Sampling Sites
 - Existing Roads Used for Access
 - Standby Land Application
 - Lower Fall River
 - Impoundments
 - Access Roads
 - Ponds
 - Upper Chislon
 - Project Boundary
 - BNSF Railroad
 - Middle/Lower Chislon
 - BLM Land
 - County Roads
 - Pipelines
 - Black Hills National Forest
 - Open Pit Uranium Mines
 - Ephemeral Streams
 - Spoil Piles
 - Perennial Streams



CONSULTANT		 Powertech (USA) Inc. Exhibit 5.7-1	
REVISIONS # DRAWN CHECKED APPROVED DATE		Operational Surface Water Monitoring Locations Dewey-Burdock Project Project No. 27, South Dakota State Plane South (feet)	
CHECK SCALES DATE: 23-Jun-2011 DRAWN: S. Henrich CHECKED: J. Mays APPROVED: J. Mays	DATE: 07-Jun-2011 FILE: Exhibit 5.7-1.pdf PROJECT: P:\Dewey-Burdock\Submittals\WRC TR RA1 June 2011\Exhibit 5.7-1.mxd	REF: 749 If this has been revised, please refer to the revision number in the original issue.	