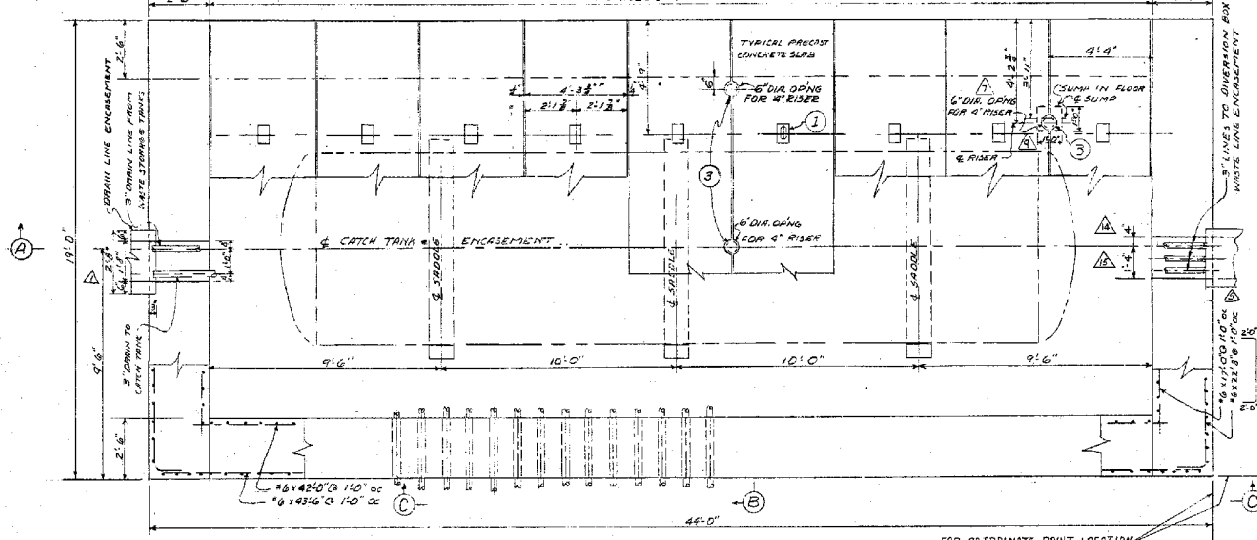
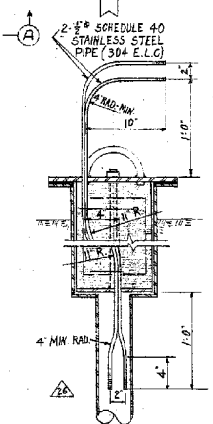


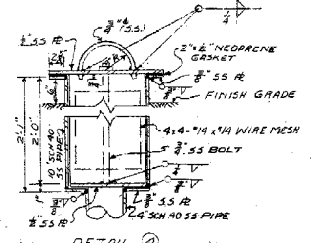
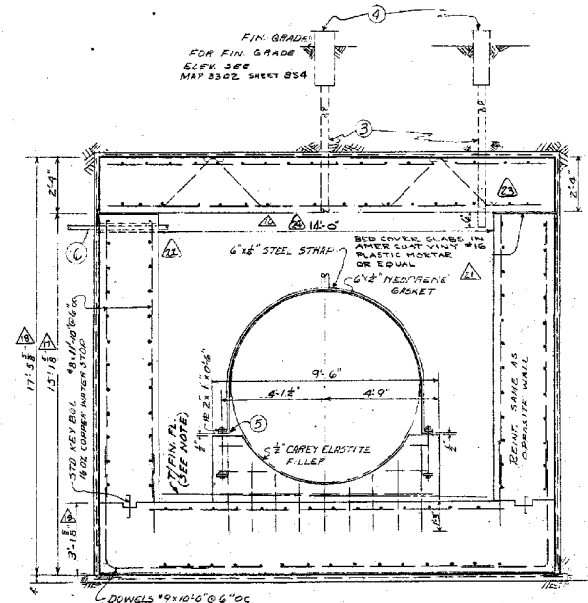
FOR DETAILS OF CATCH TANK EJECTOR
SEE DWG. 241F 800-30 W146075
FOR DETAILS OF PIPE CAST IN WALL
SEE DWG. 241F 800-30 W146075
SCALE 1/4" = 1'-0"



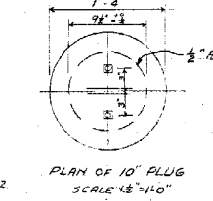
PLAN OF CATCH TANK ENCASUREMENT
SCALE 3/8" = 1'-0"



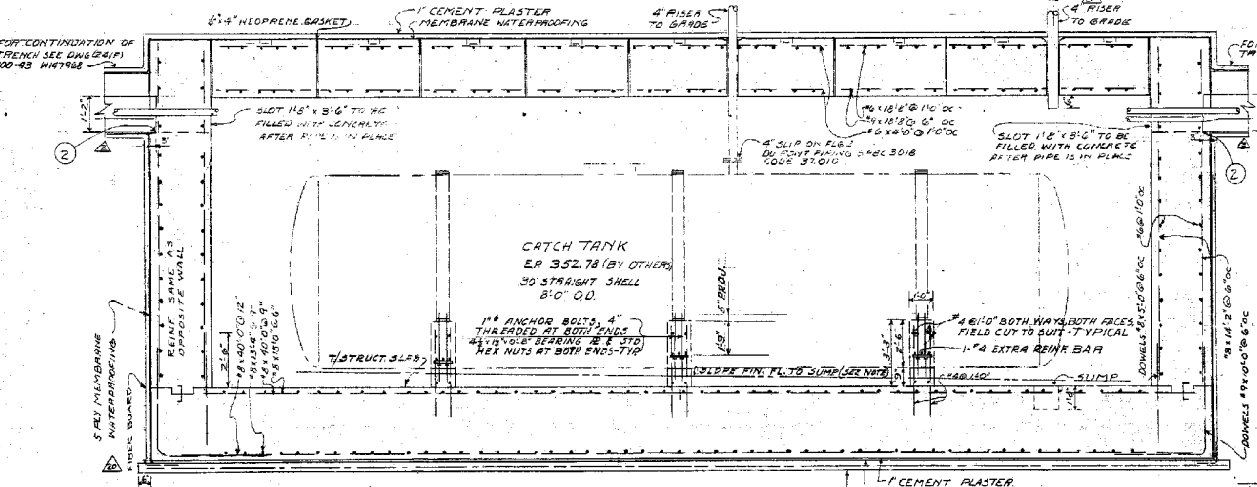
DETAIL (8)
FOR DETAILS & DIMENSIONS NOT SHOWN SEE DETAIL (2)
SCALE 1/2" = 1'-0"



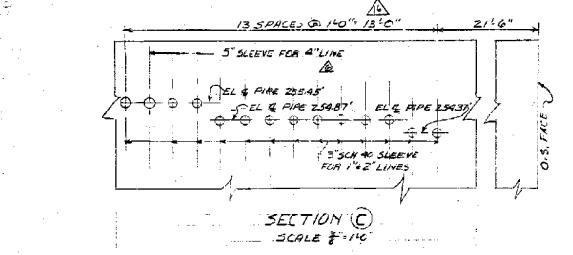
DETAIL (2)
SCALE 1/2" = 1'-0"



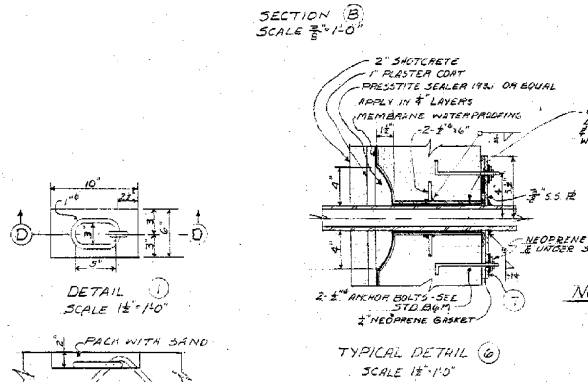
PLAN OF 10" PLUG
SCALE 1/2" = 1'-0"



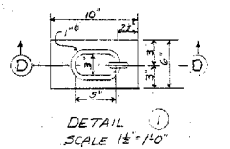
SECTION (A)
SCALE 3/8" = 1'-0"



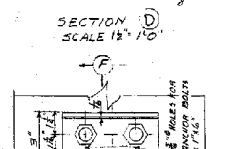
SECTION (C)
SCALE 3/8" = 1'-0"



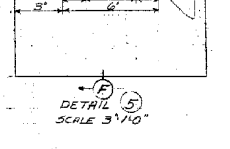
TYPICAL DETAIL (6)
SCALE 1/2" = 1'-0"



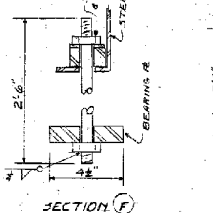
DETAIL (1)
SCALE 1/2" = 1'-0"



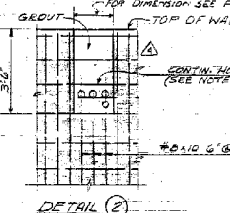
SECTION (D)
SCALE 1/2" = 1'-0"



DETAIL (5)
SCALE 3/4" = 1'-0"



SECTION (F)
SCALE 3/4" = 1'-0"



DETAIL (8)
SCALE 3/4" = 1'-0"

NOTES:
FINISHED FLOOR SLAB DETAILS:
ROUGHEN SURFACE OF STRUCT FLOOR SLAB
& SLOPE HORIZONTAL FINISH TO MINIMUM
THICKNESS OF 2" AT SURFACE
ALL BEING TO CLEAR EMBEDDED S.S.

DECLASSIFIED
DOES NOT CONTAIN
UNCLASSIFIED CONTROLLED
NUCLEAR INFORMATION
ADDRESS: 12000 W. 14th Ave., Denver, CO 80202
CLASS. AUTH: 48 CFR 1.4

FOR GENERAL NOTES SEE DWG. 241F 800-30 W146075
ST. STEEL SPEC. DU POINT SPEC. 1W 304M - GRADE 304
FIELD TO FURNISH. ALL MATERIAL EXCEPT
STAINLESS STEEL
FOR PAINTING SEE SPEC. 304 SEC. BA-01

THIS DOCUMENT CONTAINS INFORMATION
RELATING TO ACTIVITIES OF THE ATOMIC
ENERGY COMMISSION NOT TO BE
DISSEMINATED OR REPRODUCED WITHOUT PERMIT

Table with project information including: CHEMICAL PLANTS DIVISION, BKC-3555, (241F) 800-30, SAVANNAH RIVER PLANT, 200 AREA BUILDING 241F, ENCASUREMENT OF CATCH TANK, PLAN & SECTIONS CONCRETE.

Table with revision information including: REVISIONS, APPROVED, APPROVAL DATE, and a list of changes to the drawing.

Large table with columns for REVISIONS, APPROVED, APPROVAL DATE, and a list of changes to the drawing.

Table with project information including: PROJECT NO. 8980, AS SHOWN, J. WARDE, N. GOEB, and other project details.