

ANALYZE FOR SAFETY, ECOLOGY, AND MINIMUM ESSENTIAL DESIGN

ALL BACKFILL PER STD. 903B. THE AMOUNT (%) OF WATER MOST FAVORABLE TO ACHIEVE NOT LESS THAN 95% OF THE MAXIMUM DRY DENSITY AS DETERMINED BY ASTM D 1557, METHOD C SHALL BE USED.

**NOTES**

- ALL AREAS TO RECEIVE BACKFILL INCLUDING SLOPED AREAS SHALL BE PREPARED PER STD. 903B SECTION 4 (SEE NOTE 7)
- SLOPES SHALL BE CONSTRUCTED TO GRADES AS SHOWN. ALL SLOPES SHALL BE MINIMUM OF 4" TOPSOIL AND SHALL BE FIELD SEEDED. SEEDING SHALL BE IMMEDIATELY PROTECTED BY A LAYER OF STRAW MULCH SPRAYED WITH AN ASPHALT EMULSION. SELECT SEED TYPES SHALL BE OF THE TYPE THAT WILL PRODUCE A LOW GROWTH TO REDUCE MAINTENANCE & FIRE HAZARD.
- NEW PAVEMENT AROUND TANKS AND NEW ROADS SHALL CONSIST OF 2" ASPH. CONC. PER S.C.T.R. BASE COURSE - 12" SAND CLAY PER S.C.T.R. OR ALT. OF 10" CRUSHED STONE PER S.C.T.R.
- ALL EXIST. PAVEMENT DISTURBED IN NEW CONSTRUCTION, SHALL BE REPLACED TO EXIST GRADES PER STANDARD S.C.T.R. UNLESS OTHERWISE NOTED.
- ALL NEW PERMANENT FENCING SHALL BE CHAIN-LINK, 1/8" WIDE & COMPLETED TO A HEIGHT OF 8'-0" FROM GRADE TO TOP STRAND OF BARBED WIRE PER SPEC. #355B, SECTION C.F.
- PRIOR TO PLACING NEW BACKFILL THE T.O. CONC. WORKING SLAB SHALL BE BROWN UP. AN OPTIONAL ALTERNATE TO BROWNING THE PAVEMENT IS PUNCHING 4" DIA. HOLES 18" DIA. THROUGH THE T.O. CONC. WORKING SLAB. IN OTHER AREAS TO RECEIVE NEW BACKFILL, THE VEGETATION, TOP SOIL OR SOIL EROSION PROTECTION LAYER SHALL BE REMOVED AND GROUND SCARIFIED TO A DEPTH OF 4". (NOTES CONTINUED ABOVE.)

INFORMATION ON THIS DWG. HAS BEEN INCORPORATED ON MODEL	
ISSUES & REVISIONS	VERIFIED BY/DATE
ICR	10/17/78
FINAL	10/17/78
REV. 1	10/17/78
REV. 2	10/17/78
REV. 3	10/17/78
REV. 4	10/17/78
REV. 5	10/17/78
REV. 6	10/17/78
REV. 7	10/17/78
REV. 8	10/17/78
REV. 9	10/17/78
REV. 10	10/17/78

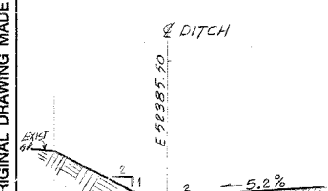
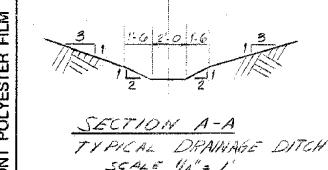
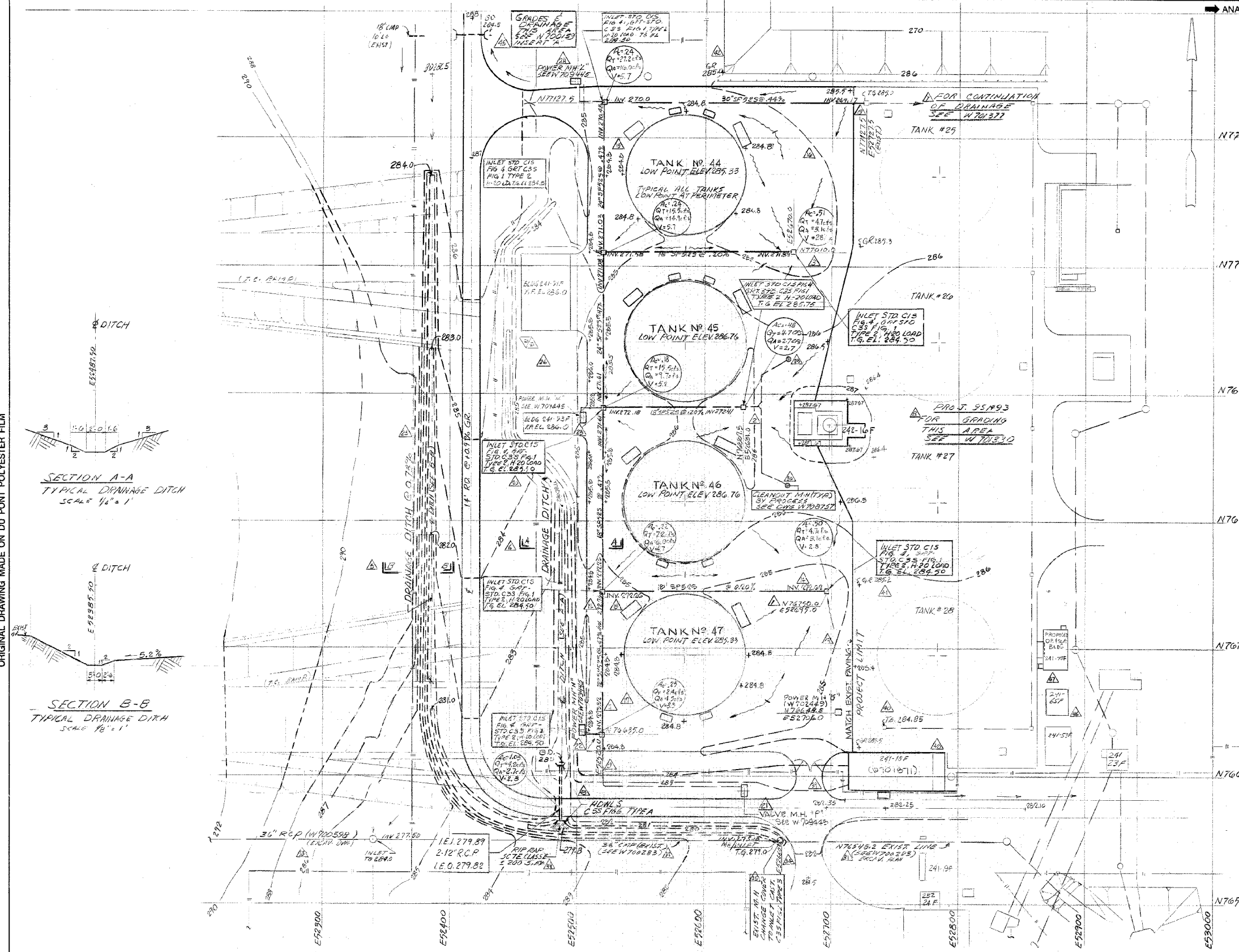
W704824 LAST 51 REV.

LEGEND	
EXIST. GRADE	---
NEW GRADE	----
SWALES	~~~~~

CONTAINS INFORMATION RELATING TO ENERGY RESEARCH AND DEVELOPMENT NOT TO BE REPRODUCED OR RELEASED WITHOUT APPROVAL

BLDG.	PROJ.	DA	TYPE	W704824	LAST 51 REV.
241-F	951747	50	42	W704824	51 REV.

**SAVANNAH RIVER PLANT**  
**BLDG. 241-F**  
**ADDL. WASTE STORAGE TANKS**  
**GRADING & DRAINAGE PLAN**  
 CIVIL



PROJ. NO.	REVISION	RVSD	CHKD	APPD	DATE	PROJ. NO.	REVISION	RVSD	CHKD	APPD	DATE	PROJ. NO.	REVISION	RVSD	CHKD	APPD	DATE	STANDARDS	REFERENCE DRAWINGS	PROJECT	SCALE	DATE
951747	1				10/17/78	951747	1				10/17/78	951747	1				10/17/78		W704824	SCALE 1/8" = 1'	5-24-77	
951747	2				10/17/78	951747	2				10/17/78	951747	2				10/17/78		W704824	SCALE 1/8" = 1'	5-24-77	
951747	3				10/17/78	951747	3				10/17/78	951747	3				10/17/78		W704824	SCALE 1/8" = 1'	5-24-77	
951747	4				10/17/78	951747	4				10/17/78	951747	4				10/17/78		W704824	SCALE 1/8" = 1'	5-24-77	
951747	5				10/17/78	951747	5				10/17/78	951747	5				10/17/78		W704824	SCALE 1/8" = 1'	5-24-77	

THIS DRAWING HAS BEEN FURNISHED BY E. I. DU PONT DE NEMOURS & CO. THE INFORMATION AND KNOW-HOW THEREON MAY NOT BE USED NOR THE DRAWING REPRODUCED WITHOUT THE WRITTEN PERMISSION OF DU PONT. ALL REPRODUCTIONS IN WHOLE OR IN PART, INCLUDING VENDOR'S SHOP DRAWINGS, SHALL BEAR OR REFER TO THIS STAMP.

W704824

ORIGINAL DRAWING MADE ON DU PONT POLYESTER FILM