

← ANALYZE FOR SAFETY, ECOLOGY AND MINIMUM ESSENTIAL DESIGN →

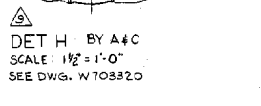
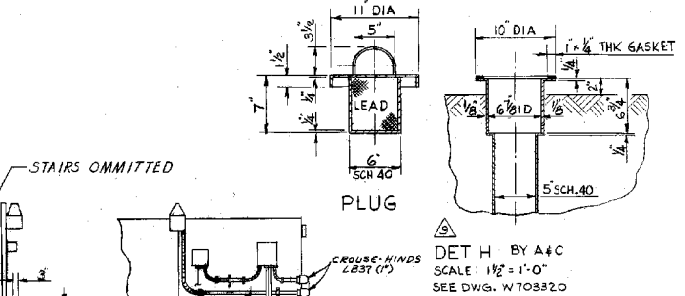
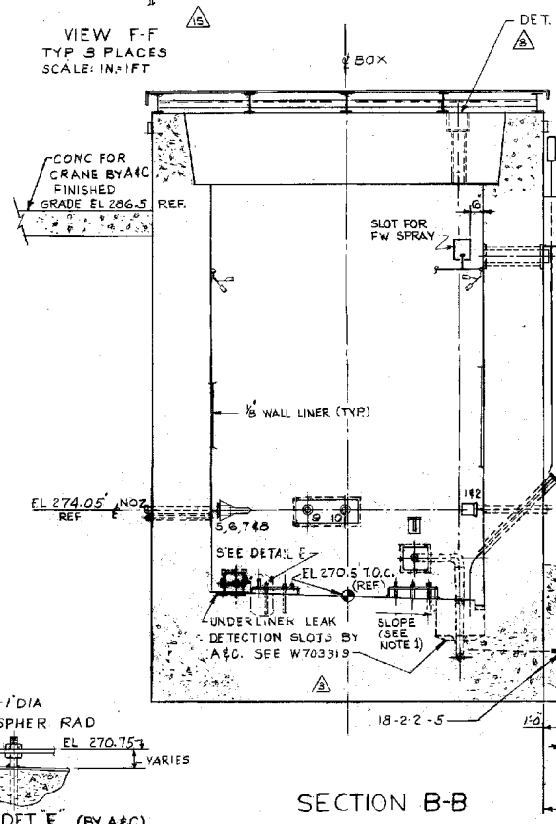
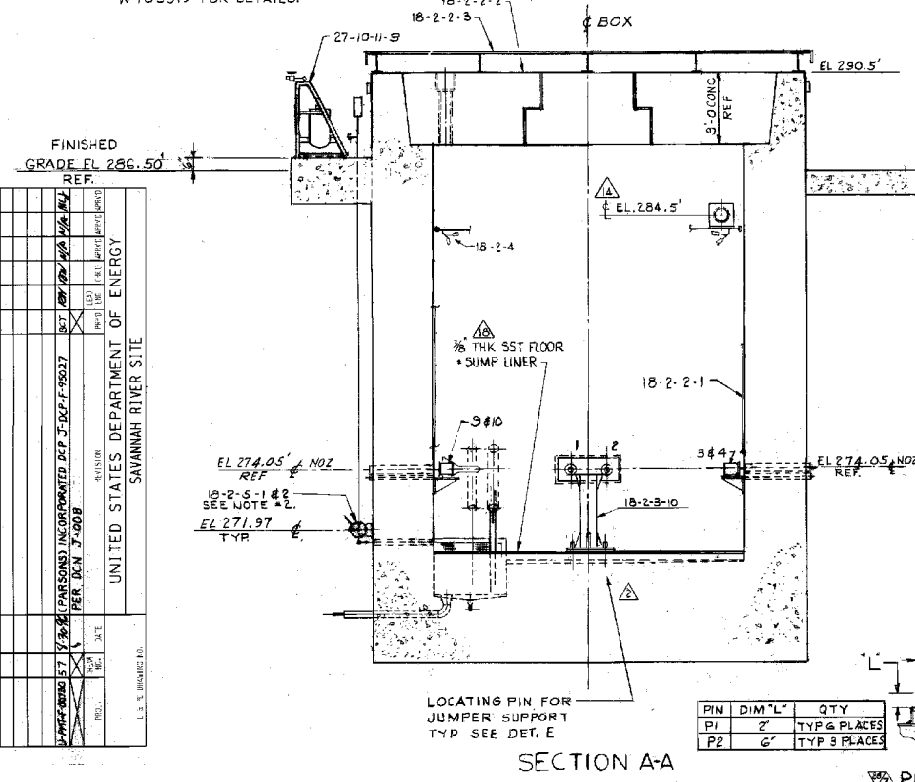
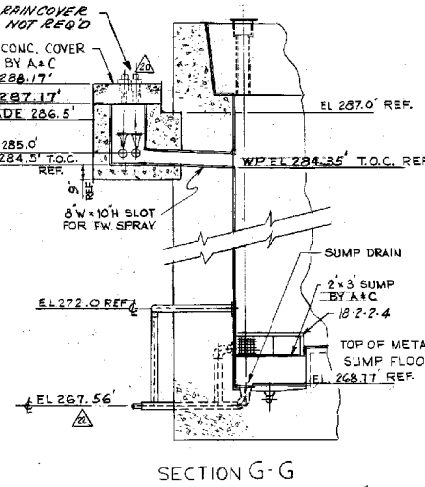
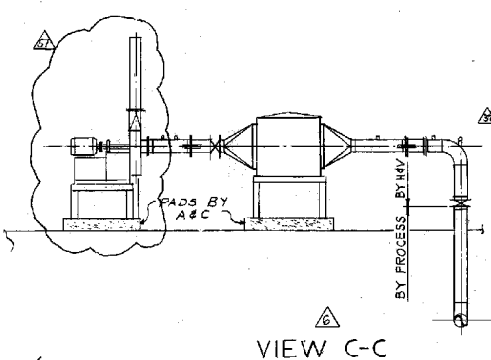
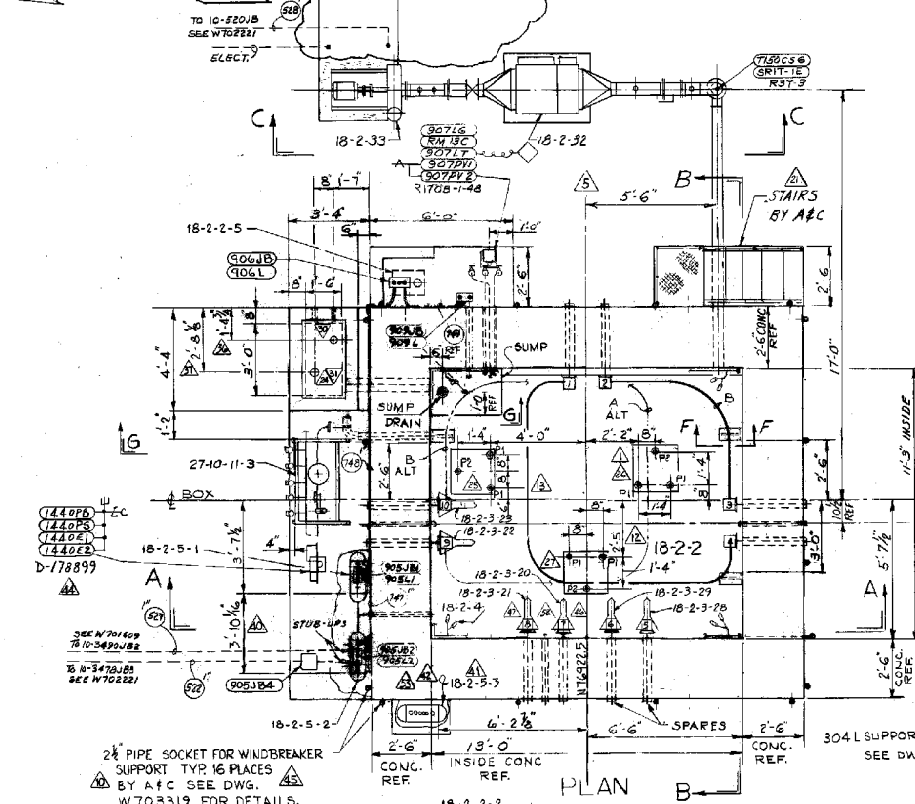
DIV BOX 'S (18-2-2)

INLET NOZZLE	FROM	TO	OUTLET NOZZLE	JUMPER LETTER	JUMPER ASSEMBLY NO	E N
1	242-3F PUMP PIT	TANK 34	4	A	W703289	18-2-3-2
9	TANK 28	242-3F PUMP PIT	2	A-ALT.	W703289	18-2-3-2
3	TANK 38	242-3F PUMP PIT	2	B	W703274	18-2-3-1
1	242-3F PUMP PIT	TANK 25	10	BALT.	W703274	18-2-3-1
4	242-3F PUMP PIT	TANK 44	9	C	W703275	18-2-3-3
7	TANK 47	242-3F PUMP PIT	2	D	W703275	18-2-3-4

PROJ. 951618  
PROJ. 951747

EQUIPMENT TABULATION

ENGR'G. NUMBER	DA	UNIT	VEN	PART	NAME	REP DWG	EMPHASIS	TEST	REMARKS
10	2	2			FDB-5 ARRGT	W702452			
18	2	2			SST LINER & SUMP	W703321			BY A&C
18	2	3			JUMPERS	SEE TAB			PROJ. 951618
18	2	4			SPRAY NOZZLES	F.P.M.			BREQD. (2 SETS)
10	2	3			JUMPERS	SEE TAB			PROJ. 951747
18	2	2			BELOW LINER SUMP	D149582C			
18	2	2			JUMP SCREEN	D149582B			
18	2	2			CELL COVERS	W103320			BY A&C
18	2	2			RAIN COVERS	W103320			BY A&C
18	2	3			LDB	W70325B			
18	2	3			LDB	W70325A			
18	2	3			LDB	W70325C			
18	2	3			OUTLET FILTER	W703221			BY H&V
18	2	3			EXHAUST FAN	W703221			BY H&V
18	2	3			STACK				BY H&V
18	2	3			JUMPER SUPPORT STAND	D149749			1 REQ'D
27	10	11			BREATH AIR STA	D149226			BY FIELD
27	5	23			HOSE STATION				
18	2	3			WALL NOZZLE DUMMY CONNECT	W704541B			FOR NOZZLES 789 & 10
18	2	3			WALL NOZZLE COVER (HORIZONTAL)	65-2-710			FOR NOZZLES 5-6
18	2	3			DUMMY CONN HARD	W704541-B			FOR NOZ 5 & 6



DET H BY A&C  
SCALE 1/2" = 1'-0"  
SEE DWG. W703320

- NOTES:
- DIVERSION BOX FLOOR TO SLOPE 3/8" PER FOOT TOWARD SUMP SEE W703319
  - LEAK DET. BOXES TO BE ATTACHED TO DIVERSION BOX WALL W/ 2-3/4" EXP. BOLTS DIAGONALLY OPPOSED, PER STD. B.M.
  - FOR HANDLING JUMPER SUPPORT STAND 18-2-3-10 IN THIS BOX, LIFTING YOKES 15-383-12 ON FDB6 (SEE W702275 & D149589C) MAY BE USED.

P 16 F 29 07 57

INFORMATION ON THIS DWG HAS BEEN INCORPORATED ON MODIFIED ISSUES & REV. VERIFIED BY DATE

20 21-56 MARCATTA/12-5-79

INVENTORIED BY: [Signature]  
DATE: 9-14-94

W702452 57

SAVANNAH RIVER PLANT  
BLDG 241F  
WASTE STORAGE FACILITIES FY76  
FDB5 EQUIP ARRGT  
PROCESS & INSTRUMENTS (U)

UNITED STATES DEPARTMENT OF ENERGY  
SAVANNAH RIVER SITE

REVISIONS

NO.	DATE	DESCRIPTION
1	10/1/74	ISSUED FOR CONSTRUCTION
2	11/1/74	REVISIONS
3	12/1/74	REVISIONS
4	1/1/75	REVISIONS
5	2/1/75	REVISIONS
6	3/1/75	REVISIONS
7	4/1/75	REVISIONS
8	5/1/75	REVISIONS
9	6/1/75	REVISIONS
10	7/1/75	REVISIONS
11	8/1/75	REVISIONS
12	9/1/75	REVISIONS
13	10/1/75	REVISIONS
14	11/1/75	REVISIONS
15	12/1/75	REVISIONS
16	1/1/76	REVISIONS
17	2/1/76	REVISIONS
18	3/1/76	REVISIONS
19	4/1/76	REVISIONS
20	5/1/76	REVISIONS
21	6/1/76	REVISIONS
22	7/1/76	REVISIONS
23	8/1/76	REVISIONS
24	9/1/76	REVISIONS
25	10/1/76	REVISIONS
26	11/1/76	REVISIONS
27	12/1/76	REVISIONS
28	1/1/77	REVISIONS
29	2/1/77	REVISIONS
30	3/1/77	REVISIONS
31	4/1/77	REVISIONS
32	5/1/77	REVISIONS
33	6/1/77	REVISIONS
34	7/1/77	REVISIONS
35	8/1/77	REVISIONS
36	9/1/77	REVISIONS
37	10/1/77	REVISIONS
38	11/1/77	REVISIONS
39	12/1/77	REVISIONS
40	1/1/78	REVISIONS
41	2/1/78	REVISIONS
42	3/1/78	REVISIONS
43	4/1/78	REVISIONS
44	5/1/78	REVISIONS
45	6/1/78	REVISIONS
46	7/1/78	REVISIONS
47	8/1/78	REVISIONS
48	9/1/78	REVISIONS
49	10/1/78	REVISIONS
50	11/1/78	REVISIONS
51	12/1/78	REVISIONS
52	1/1/79	REVISIONS
53	2/1/79	REVISIONS
54	3/1/79	REVISIONS
55	4/1/79	REVISIONS
56	5/1/79	REVISIONS
57	6/1/79	REVISIONS
58	7/1/79	REVISIONS
59	8/1/79	REVISIONS
60	9/1/79	REVISIONS
61	10/1/79	REVISIONS
62	11/1/79	REVISIONS
63	12/1/79	REVISIONS
64	1/1/80	REVISIONS
65	2/1/80	REVISIONS
66	3/1/80	REVISIONS
67	4/1/80	REVISIONS
68	5/1/80	REVISIONS
69	6/1/80	REVISIONS
70	7/1/80	REVISIONS
71	8/1/80	REVISIONS
72	9/1/80	REVISIONS
73	10/1/80	REVISIONS
74	11/1/80	REVISIONS
75	12/1/80	REVISIONS
76	1/1/81	REVISIONS
77	2/1/81	REVISIONS
78	3/1/81	REVISIONS
79	4/1/81	REVISIONS
80	5/1/81	REVISIONS
81	6/1/81	REVISIONS
82	7/1/81	REVISIONS
83	8/1/81	REVISIONS
84	9/1/81	REVISIONS
85	10/1/81	REVISIONS
86	11/1/81	REVISIONS
87	12/1/81	REVISIONS
88	1/1/82	REVISIONS
89	2/1/82	REVISIONS
90	3/1/82	REVISIONS
91	4/1/82	REVISIONS
92	5/1/82	REVISIONS
93	6/1/82	REVISIONS
94	7/1/82	REVISIONS
95	8/1/82	REVISIONS
96	9/1/82	REVISIONS
97	10/1/82	REVISIONS
98	11/1/82	REVISIONS
99	12/1/82	REVISIONS
100	1/1/83	REVISIONS

REFERENCE DRAWINGS

DWG. NO.	DESCRIPTION
W701800	241F FDB5
W702543	FDB5
W700159	FDB5
W701389	FDB5
W703319	KEY CONC.
W703320	CONC. FSTL.
W703321	STEEL
W703221	KEY H&V

PROJECT: 951618 951747, 951493  
SCALE: 1/2" = 1'-0"  
DRAWN BY: WASSON  
CHECKED BY: [Signature]  
APPROVED BY: [Signature]

E. I. DUPONT DE NEMOURS & COMPANY  
WILMINGTON, DELAWARE  
ENGINEERING DEPARTMENT  
W702452