

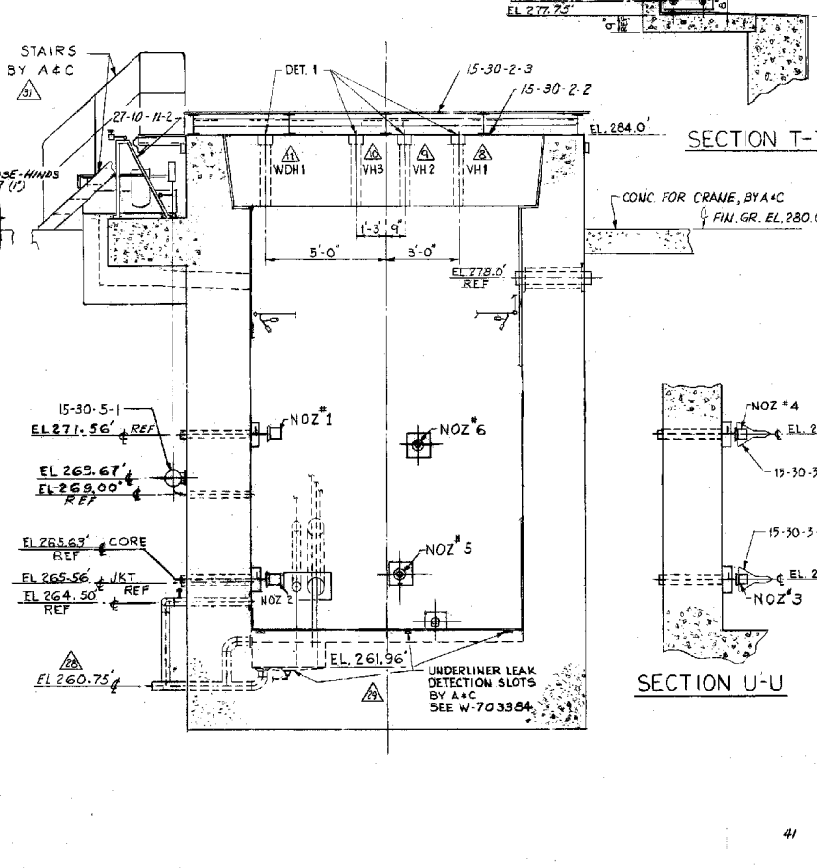
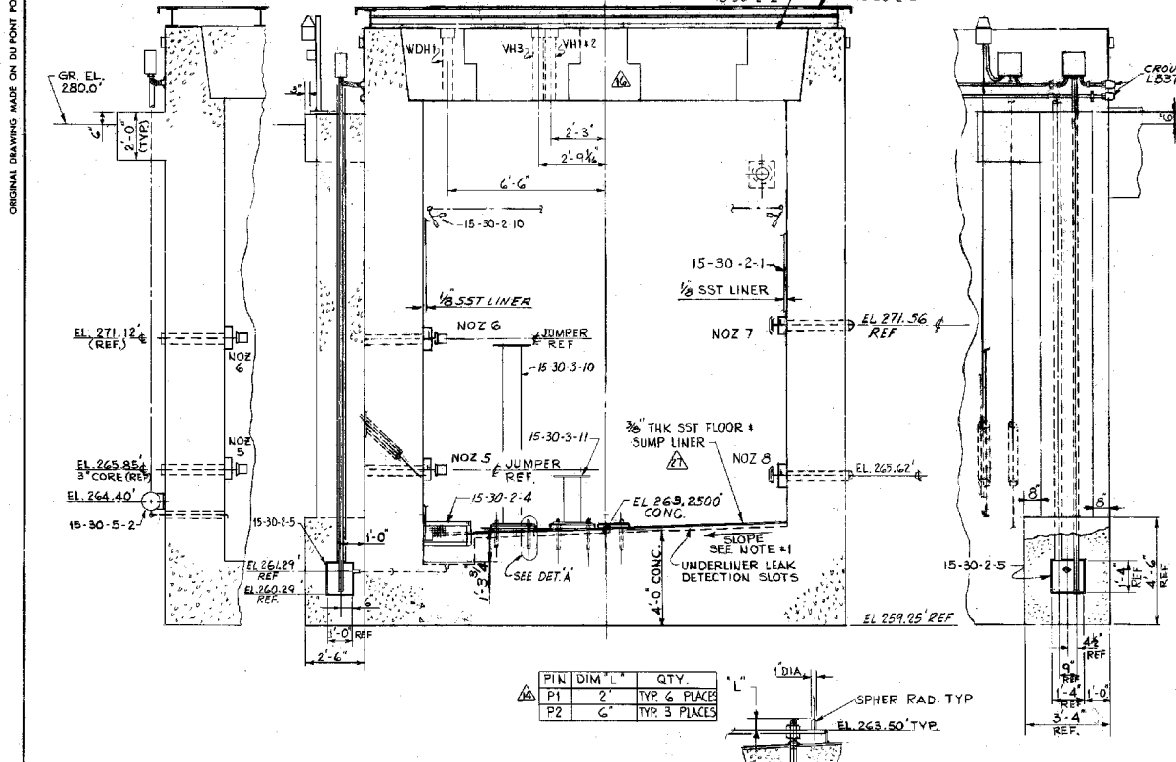
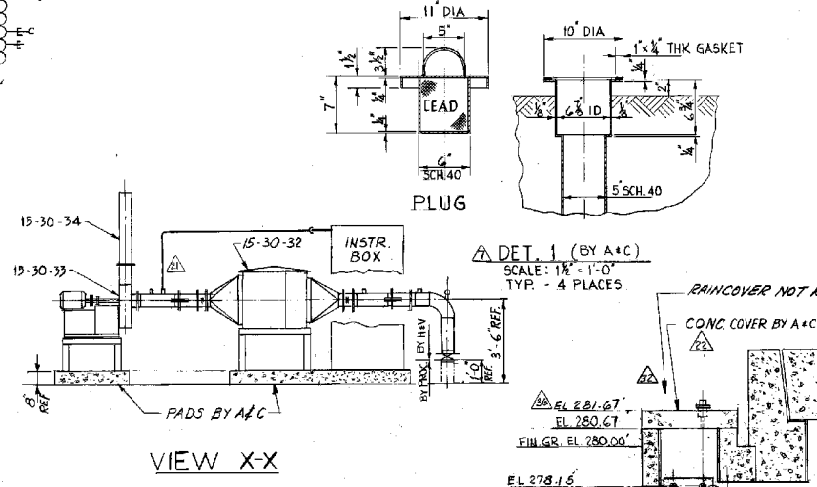
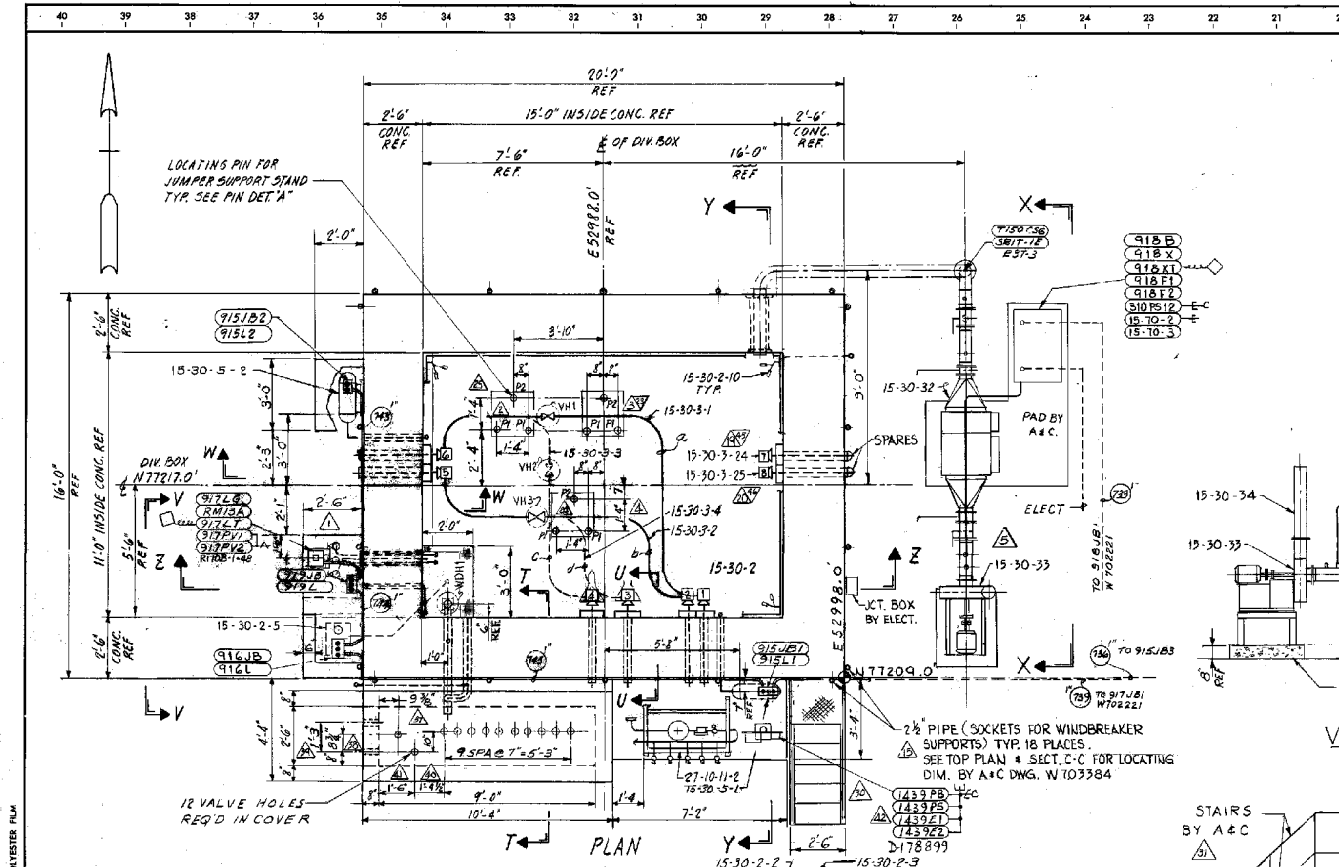
ANALYZE FOR SAFETY, ECOLOGY AND MINIMUM ESSENTIAL DESIGN

DIV BOX NO 6 (15-30-2)

INLET NOZ NO	FROM	TO	OUTLET NOZ NO	JUMPER LETTER	JUMPER ASSEMBLY NO	E.N.
1	TANK 7	242 F EVAP	6	a	W-703276	15-30-3-1
4	TANK 2G	242 F EVAP	2	b	W-703277	15-30-3-2
5	TANK 2G	242 F EVAP	6	c	W-703278	15-30-3-3
			3	d	W-703279	15-30-3-4

EQUIPMENT TABULATION

ENGRG NUMBER	NAME	REF DWG	AMPT	PROV	TEST	REMARKS
15 30 2	FDB 6	W703284				
15 30 2	FDB 6 SST LINER	W703285				BY A&C
15 30 2	CELL COVER	W703286				BY A&C
15 30 2	RAIN COVER	W703286				BY A&C
15 30 2	BELOW LINER SUMP	D149587A				
15 30 2	SUMP SCREEN	D149587A				
15 30 2	SPRAY NOZZLES	FPM				1 SET
15 30 3	HORIZ JUMPER	W-703276				BY FIELD
15 30 3	HORIZ JUMPER	W-703277				BY FIELD
15 30 3	HORIZ JUMPER	W-703278				BY FIELD
15 30 3	HORIZ JUMPER	W-703279				BY FIELD
15 30 3	JUMPER SUPPORT	D144589A				
15 30 3	"	D144589A				
15 30 5	LDB	W70205-C				
15 30 5	LDB	W70205-D				
15 30 7	DUMMY CONN.	W704541B				
15 30 7	DUMMY CONN	W704541B				
15 30 8	OUTLET FILTER	W703451				BY HEV
15 30 8	EXHAUST FAN	"				BY HEV
15 30 8	STACK	"				BY HEV
15 30 8	LIFTING YOKE	D144589C				SEE NOTE 3
27 10 11	BREATH AIR STAD	D144226				



- NOTES:
- FOR FLOOR SLOPE SEE W-703384
  - LEAK DETECTION BOXES TO BE ATTACHED TO DIVERSION BOX WALLS W/ 2-3/8" EXPANSION BOLTS DIAGONALLY OPPOSED, PER STD. BMM.
  - LIFTING YOKE 15-30-3-12 TO BE USED FOR HANDLING JUMPER SUPPORT STAND 15-30-3-10 OR 15-30-3-11. YOKE MAY ALSO BE USED FOR HANDLING JUMPER SUPPORT STAND 15-30-3-10 IN FDBS ON DWG. W702452

REVISIONS

NO.	DATE	DESCRIPTION
1	10/15/77	REVISED DET A PER A&C
2	10/15/77	REVISED DET A PER A&C
3	10/15/77	REVISED DET A PER A&C
4	10/15/77	REVISED DET A PER A&C
5	10/15/77	REVISED DET A PER A&C
6	10/15/77	REVISED DET A PER A&C
7	10/15/77	REVISED DET A PER A&C
8	10/15/77	REVISED DET A PER A&C
9	10/15/77	REVISED DET A PER A&C
10	10/15/77	REVISED DET A PER A&C
11	10/15/77	REVISED DET A PER A&C
12	10/15/77	REVISED DET A PER A&C
13	10/15/77	REVISED DET A PER A&C
14	10/15/77	REVISED DET A PER A&C
15	10/15/77	REVISED DET A PER A&C
16	10/15/77	REVISED DET A PER A&C
17	10/15/77	REVISED DET A PER A&C
18	10/15/77	REVISED DET A PER A&C
19	10/15/77	REVISED DET A PER A&C
20	10/15/77	REVISED DET A PER A&C
21	10/15/77	REVISED DET A PER A&C
22	10/15/77	REVISED DET A PER A&C
23	10/15/77	REVISED DET A PER A&C
24	10/15/77	REVISED DET A PER A&C
25	10/15/77	REVISED DET A PER A&C
26	10/15/77	REVISED DET A PER A&C
27	10/15/77	REVISED DET A PER A&C
28	10/15/77	REVISED DET A PER A&C
29	10/15/77	REVISED DET A PER A&C
30	10/15/77	REVISED DET A PER A&C
31	10/15/77	REVISED DET A PER A&C
32	10/15/77	REVISED DET A PER A&C
33	10/15/77	REVISED DET A PER A&C
34	10/15/77	REVISED DET A PER A&C
35	10/15/77	REVISED DET A PER A&C
36	10/15/77	REVISED DET A PER A&C
37	10/15/77	REVISED DET A PER A&C
38	10/15/77	REVISED DET A PER A&C
39	10/15/77	REVISED DET A PER A&C
40	10/15/77	REVISED DET A PER A&C

SAVANNAH RIVER PLANT  
 BLDG 241F  
 WASTE STORAGE FAC FY 76  
 FDB 6 EQUIP ARRGT SHEET 1  
 PROCESS & INSTRUMENTS

REVISIONS

PROJ. NO.	REV.	DATE	DESCRIPTION	BY	CHKD	APP'D
15-30-2	1	10/15/77	REVISED DET A PER A&C			
15-30-2	2	10/15/77	REVISED DET A PER A&C			
15-30-2	3	10/15/77	REVISED DET A PER A&C			
15-30-2	4	10/15/77	REVISED DET A PER A&C			
15-30-2	5	10/15/77	REVISED DET A PER A&C			
15-30-2	6	10/15/77	REVISED DET A PER A&C			
15-30-2	7	10/15/77	REVISED DET A PER A&C			
15-30-2	8	10/15/77	REVISED DET A PER A&C			
15-30-2	9	10/15/77	REVISED DET A PER A&C			
15-30-2	10	10/15/77	REVISED DET A PER A&C			
15-30-2	11	10/15/77	REVISED DET A PER A&C			
15-30-2	12	10/15/77	REVISED DET A PER A&C			
15-30-2	13	10/15/77	REVISED DET A PER A&C			
15-30-2	14	10/15/77	REVISED DET A PER A&C			
15-30-2	15	10/15/77	REVISED DET A PER A&C			
15-30-2	16	10/15/77	REVISED DET A PER A&C			
15-30-2	17	10/15/77	REVISED DET A PER A&C			
15-30-2	18	10/15/77	REVISED DET A PER A&C			
15-30-2	19	10/15/77	REVISED DET A PER A&C			
15-30-2	20	10/15/77	REVISED DET A PER A&C			
15-30-2	21	10/15/77	REVISED DET A PER A&C			
15-30-2	22	10/15/77	REVISED DET A PER A&C			
15-30-2	23	10/15/77	REVISED DET A PER A&C			
15-30-2	24	10/15/77	REVISED DET A PER A&C			
15-30-2	25	10/15/77	REVISED DET A PER A&C			
15-30-2	26	10/15/77	REVISED DET A PER A&C			
15-30-2	27	10/15/77	REVISED DET A PER A&C			
15-30-2	28	10/15/77	REVISED DET A PER A&C			
15-30-2	29	10/15/77	REVISED DET A PER A&C			
15-30-2	30	10/15/77	REVISED DET A PER A&C			
15-30-2	31	10/15/77	REVISED DET A PER A&C			
15-30-2	32	10/15/77	REVISED DET A PER A&C			
15-30-2	33	10/15/77	REVISED DET A PER A&C			
15-30-2	34	10/15/77	REVISED DET A PER A&C			
15-30-2	35	10/15/77	REVISED DET A PER A&C			
15-30-2	36	10/15/77	REVISED DET A PER A&C			
15-30-2	37	10/15/77	REVISED DET A PER A&C			
15-30-2	38	10/15/77	REVISED DET A PER A&C			
15-30-2	39	10/15/77	REVISED DET A PER A&C			
15-30-2	40	10/15/77	REVISED DET A PER A&C			

E.I. DUPONT DE NEMOURS & COMPANY  
 WILMINGTON, DELAWARE  
 ENGINEERING DEPARTMENT  
**W702275**