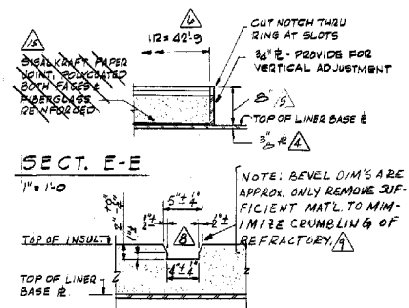


DETAIL A  
1/8" = 1'-0"



SECT. E-E  
1/8" = 1'-0"

TYF SECT. THRU SLOTS  
1/8" = 1'-0"

- NOTES
- FOR THERMOCOUPLE LOCATIONS SEE INSTRUMENT DWG W700413, W700415, W700417 & W700419.
  - INSPECT AND CLEAN OUT SLOTS PRIOR TO PLACING PRIMARY LINER.
  - INSPECT AND CLEAN OUT SLOTS ACCESSIBLE AFTER STRESS RELIEVING OF TANK.
  - TANK BOTTOM TO BE SWEEP CLEAN & DRY BEFORE PLACING REFRACTORY.

NOTE:  
REVISIONS 1 THRU 5 MADE PRIDE  
TO S.C.R. RELEASE.

THIS DOCUMENT CONTAINS INFORMATION  
RELATING TO ACTIVITIES OF THE ATOMIC  
ENERGY COMMISSION NOT TO BE REPRODUCED  
OR RELEASED WITHOUT PRIOR APPROVAL.

NO.	PROJ.	DA	DWG. TYPE	LATEST
241.14F	951493	11	45	32
W700339				REVISION

SAVANNAH RIVER PLANT  
BUILDING 241-14F TANKS 25, 26, 27 & 28  
ADDITIONAL WASTE STORAGE TANKS  
COOLING SLOTS - PLAN & DETAILS  
STEEL

INVENTORIED BY  
DATE 12/28/94

INVENTORIED BY  
DATE 5-11-94

PROJ. NO.	REVISIONS	REVISED BY	CHECKED BY	APPROVED BY	DATE	PROJ. NO.	REVISIONS	REVISED BY	CHECKED BY	APPROVED BY	DATE	PROJ. NO.	REVISIONS	REVISED BY	CHECKED BY	APPROVED BY	DATE	PROJ. NO.	REVISIONS	REVISED BY	CHECKED BY	APPROVED BY	DATE	

REFERENCE DRAWINGS

W700413	INSTR. TANK 25	
W700415	"	
W700417	"	
W700419	"	

PROJECT: 951493  
SCALE: AS SHOWN  
DRAWN: J. J. WILSON  
CHECKED: J. J. WILSON  
APPROVED: J. J. WILSON  
DATE: 5-11-94

THIS DRAWING HAS BEEN FURNISHED BY E. I. DU PONT DE NEMOURS & CO. THE INFORMATION AND KNOW-HOW THEREON MAY NOT BE USED NOR THE DRAWING REPRODUCED WITHOUT THE WRITTEN PERMISSION OF DU PONT. ALL REPRODUCTIONS IN WHOLE OR IN PART, INCLUDING VENDOR'S SHOP DRAWINGS, SHALL BEAR OR REFER TO THIS STAMP.

E. I. DU PONT DE NEMOURS & COMPANY  
WILMINGTON, DELAWARE  
ENGINEERING DEPARTMENT  
W700339

ORIGINAL DRAWING MADE ON DU PONT POLYESTER FILM