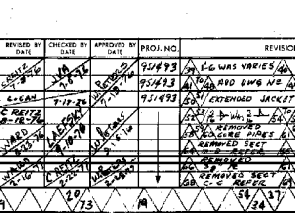
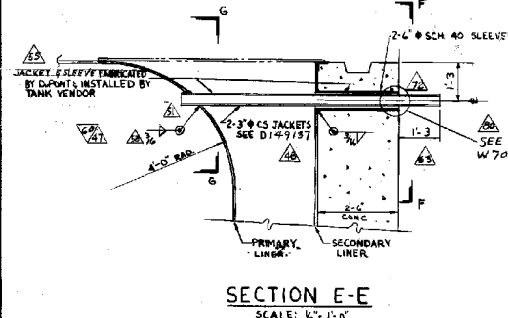
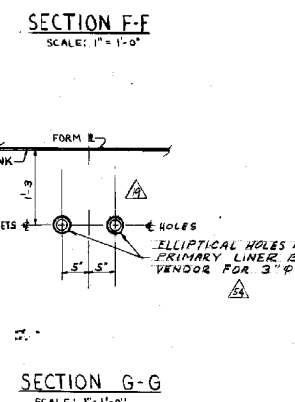
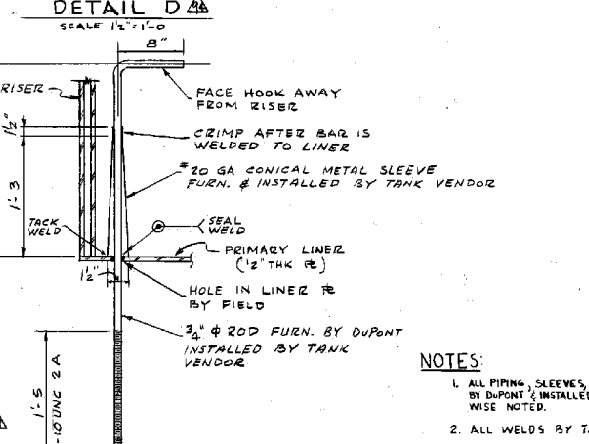
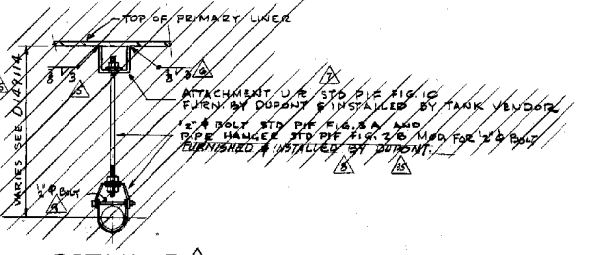
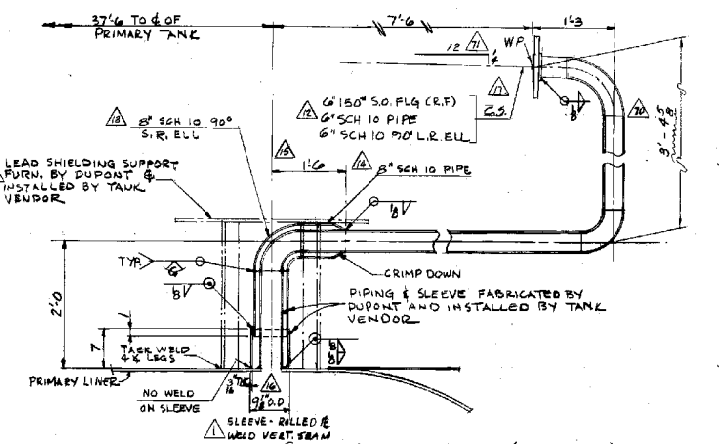
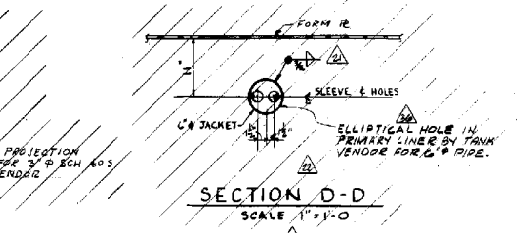
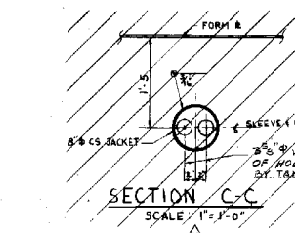
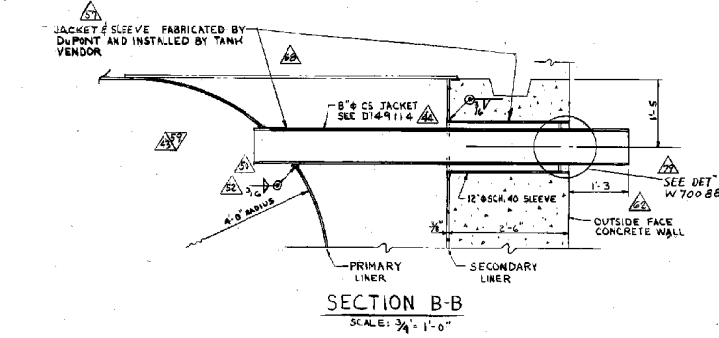
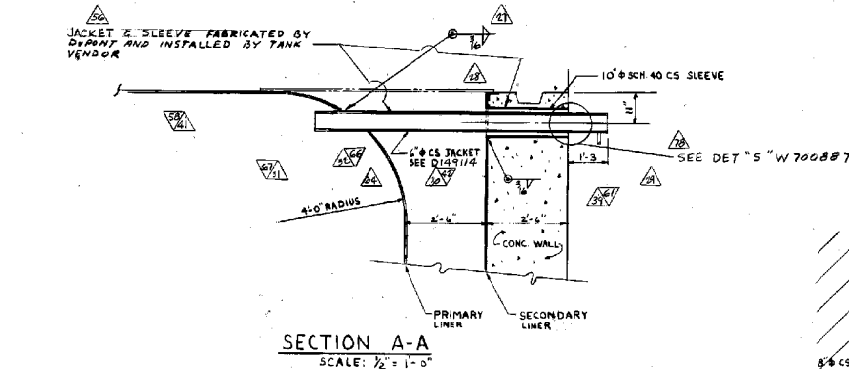
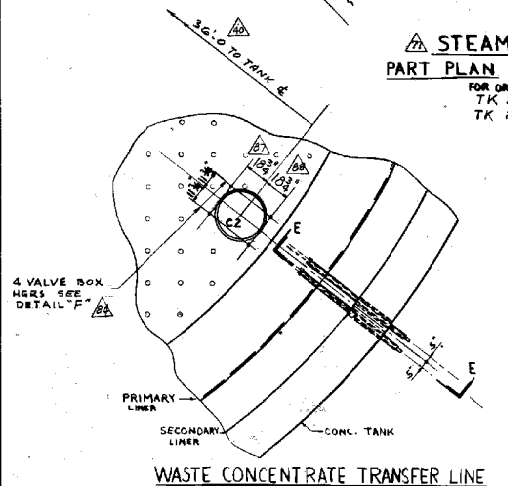
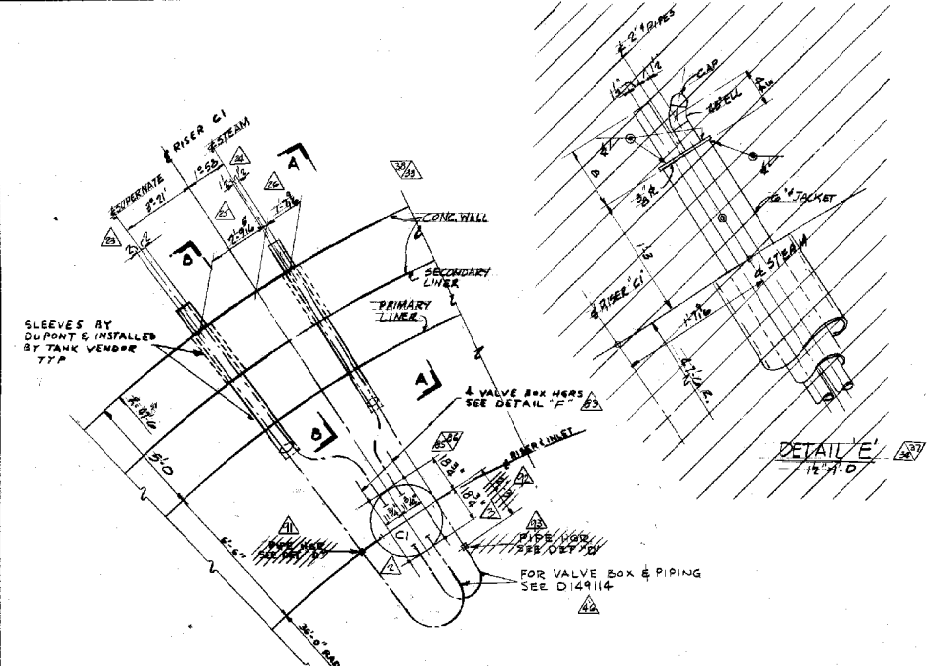


ANALYZE FOR SAFETY, ECOLOGY AND MINIMUM ESSENTIAL DESIGN



**NOTES:**  
1. ALL PIPING, SLEEVES, PIPE HANGERS, TO BE FURNISHED BY DUPONT & INSTALLED BY TANK VENDOR UNLESS OTHERWISE NOTED.  
2. ALL WELDS BY TANK VENDOR UNLESS NOTED.

**NOTE:**  
REVISIONS 1 THRU 36 MADE PRIOR TO I.C.R. RELEASE.

THIS DOCUMENT CONTAINS INFORMATION RELATIVE TO ACTIVITIES OF THE ATOMIC ENERGY COMMISSION NOT TO BE REPRODUCED OR RELEASED WITHOUT FORMER APPROVAL

BIDG.	PROJ.	DA	DWG. TYP.	DATE
241-14F	951493	11	45	7/25/54

**W700325** 94 REVISION

SAVANNAH RIVER PLANT  
BLDG 241-14F TANKS 25, 26, 27 & 28  
ADDITIONAL WASTE STORAGE TANKS  
LINER PLATE ATTACHMENTS SH#1  
STEEL

ENGINEERING DOC. CONTROL - SIS  
00021970

PROJ. NO.	REVISIONS	REVISED BY	CHECKED BY	APPROVED BY	PROJ. NO.	REVISIONS	REVISED BY	CHECKED BY	APPROVED BY	PROJ. NO.	REVISIONS	REVISED BY	CHECKED BY	APPROVED BY	PROJ. NO.	REVISIONS	REVISED BY	CHECKED BY	APPROVED BY
251493	1	WAS	1/2"		251493	1	WAS	1/2"		251493	1	WAS	1/2"		251493	1	WAS	1/2"	
251493	2	ADDED DET. G			251493	2	ADDED DET. G			251493	2	ADDED DET. G			251493	2	ADDED DET. G		
251493	3	REMOVED PIPE HANGER DET. D			251493	3	REMOVED PIPE HANGER DET. D			251493	3	REMOVED PIPE HANGER DET. D			251493	3	REMOVED PIPE HANGER DET. D		

REFERENCE DRAWINGS	PROJ. NO.	DATE
W700340 TOP SL. TK 25	951493	
W700341 TOP SL. TK 26		
W700342 TOP SL. TK 27		
W700343 TOP SL. TK 28		
D149114		
D149137		
W700087		

THIS DRAWING HAS BEEN FURNISHED BY E. I. DU PONT DE NEMOURS & CO. THE INFORMATION AND KNOW-HOW THEREON MAY NOT BE REPRODUCED OR TRANSMITTED IN ANY FORM OR BY ANY MEANS, INCLUDING PHOTOCOPYING, RECORDING, OR BY ANY INFORMATION STORAGE AND RETRIEVAL SYSTEM, WITHOUT THE WRITTEN PERMISSION OF E. I. DU PONT DE NEMOURS & CO. THIS DRAWING IS THE PROPERTY OF E. I. DU PONT DE NEMOURS & CO. AND SHALL BE RETURNED TO THE COMPANY UPON REQUEST.

E. I. DU PONT DE NEMOURS & COMPANY  
ENGINEERING DEPARTMENT  
**W700325**

THE PHOTOGRAPHIC LINES ON THIS DRAWING MAY BE REPRODUCED WITH A XEROGRAPH