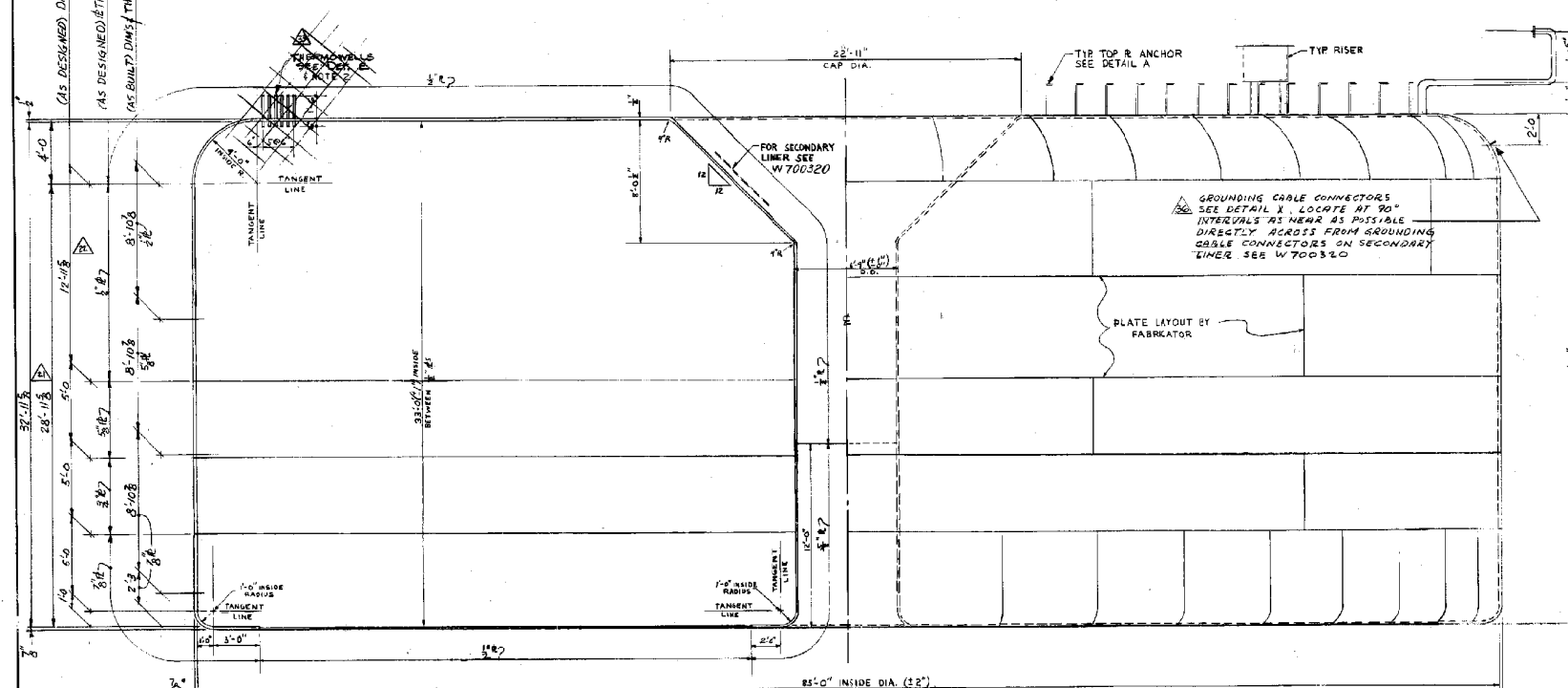


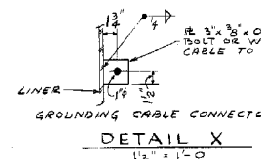
QUARTER PLAN - BOTTOM

QUARTER PLAN - TOP

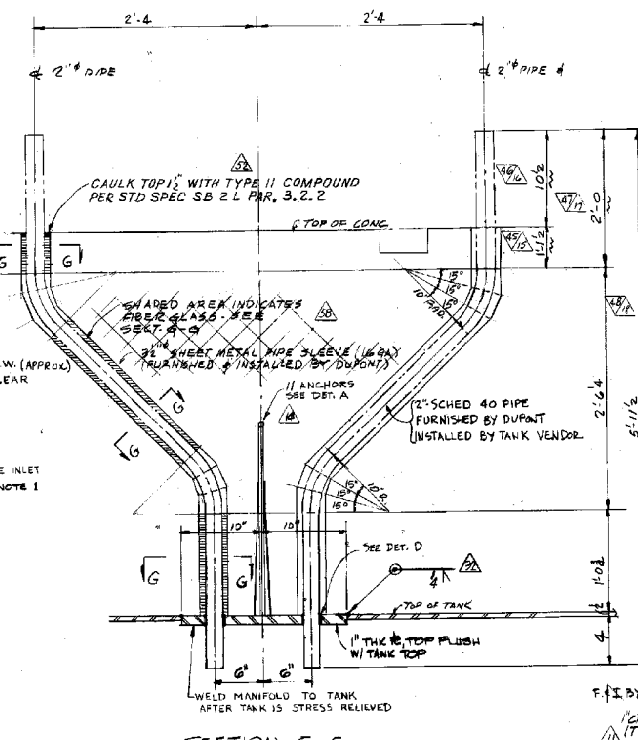


HALF SECTION

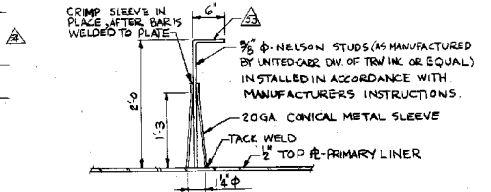
HALF ELEVATION



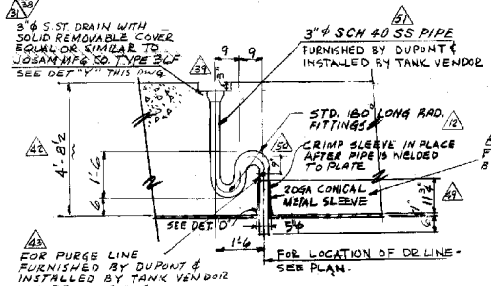
DETAIL X



SECTION C-C

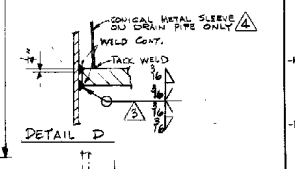


DETAIL A

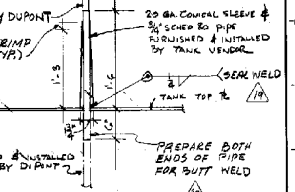


SECTION F-F

APPLY INSULATION PER NOTES B TO E (W700326)  
**SECTION G-G**  
 INSULATION FURNISHED AND INSTALLED BY DUPONT (TYP) NTS  
**SECTION H-H (AS NOTED)**  
 SEE W700326, DET. E  
 SEE INSULATION NOTES (W700326) NOTES A, 9, 9.4



DETAIL D



DETAIL E

- NOTE**
- FOR ORIENTATION & LOCATION OF ALL RISERS & INLET LINES SEE:
    - TK 25 W700340
    - TK 26 W700341
    - TK 27 W700342
    - TK 28 W700343
  - FOR ARRANGEMENT & DETAILS OF THERMOWELLS SEE INST. DWG. #
  - FOR SURFACE TREATMENT OF EXTERIOR OF PRIMARY LINER AT PEGSCO RISES SEE NOTE 'A' ON W700340, W700341, W700342 & W700343

**NOTE:**  
 REVISIONS 1 THRU 20 MADE PRIOR TO I.C.R. RELEASE

THIS DOCUMENT CONTAINS INFORMATION RELATING TO ACTIVITIES OF THE ATOMIC ENERGY COMMISSION NOT TO BE REPRODUCED OR RELEASED WITHOUT PRIOR APPROVAL

BLDG.	PROJ.	DA	DWG. TYP.	NO.	REV.
241	951493	11	45	<b>W700321</b>	64

SAVANNAH RIVER PLANT  
 BLDG. 241-14F TANKS 25, 26, 27 & 28  
 ADDITIONAL WASTE STORAGE TANKS  
 PRIMARY LINER PLANS & DETAILS  
 STEEL

REV. NO.	DATE	BY	CHKD.	APPROVED	DESCRIPTION
1	11-27-74	...	...	...	...
2	12-11-74	...	...	...	...
3	1-15-75	...	...	...	...
4	2-11-75	...	...	...	...
5	3-11-75	...	...	...	...
6	4-11-75	...	...	...	...
7	5-11-75	...	...	...	...
8	6-11-75	...	...	...	...
9	7-11-75	...	...	...	...
10	8-11-75	...	...	...	...
11	9-11-75	...	...	...	...
12	10-11-75	...	...	...	...
13	11-11-75	...	...	...	...
14	12-11-75	...	...	...	...
15	1-11-76	...	...	...	...
16	2-11-76	...	...	...	...
17	3-11-76	...	...	...	...
18	4-11-76	...	...	...	...
19	5-11-76	...	...	...	...
20	6-11-76	...	...	...	...

E. I. DUPONT DE NEMOURS & COMPANY  
 WILMINGTON, DELAWARE  
 ENGINEERING DEPARTMENT  
**W700321**