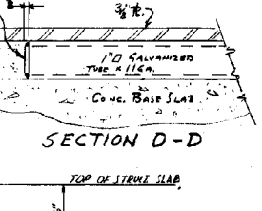
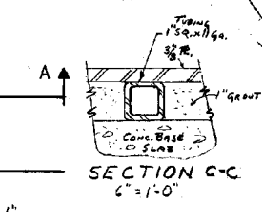
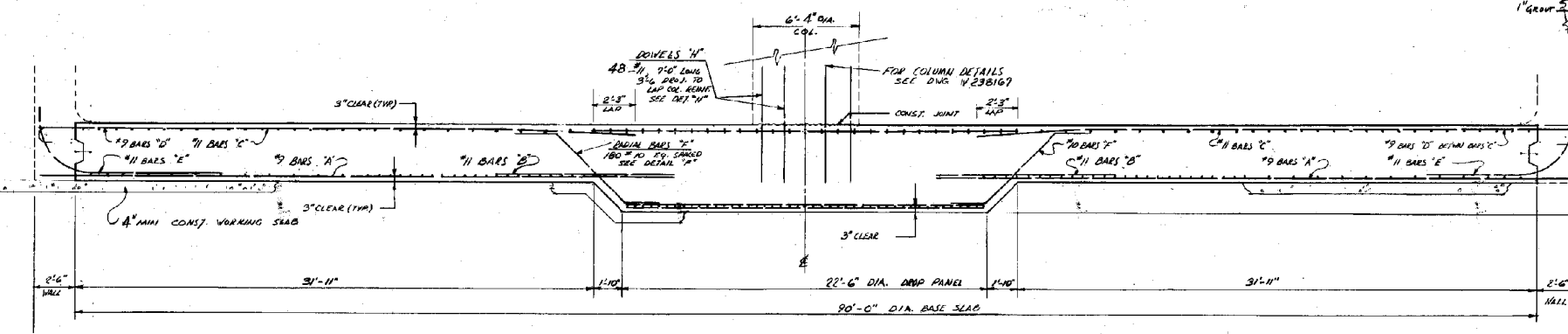
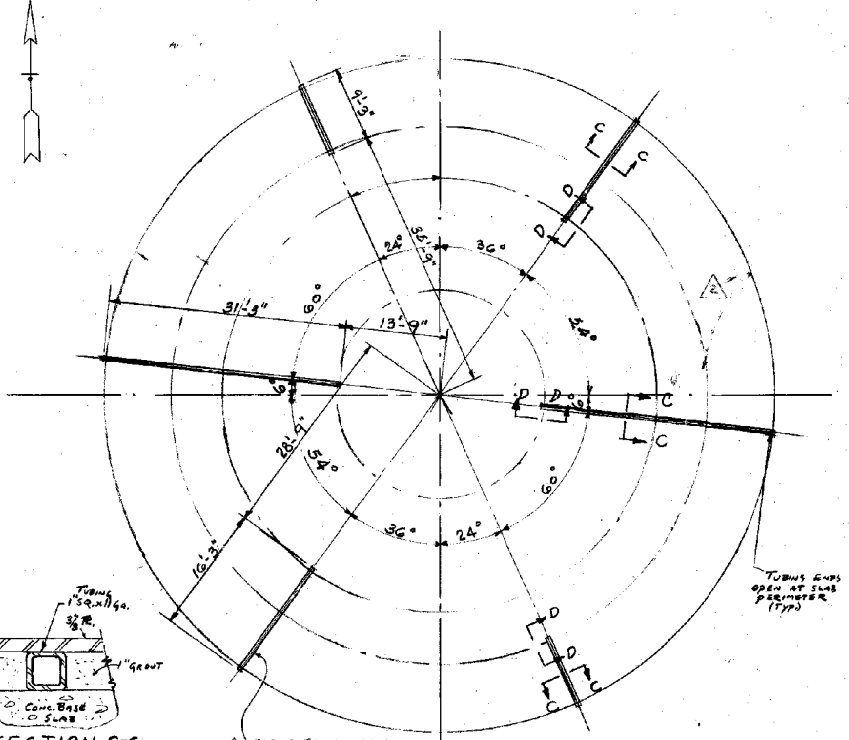
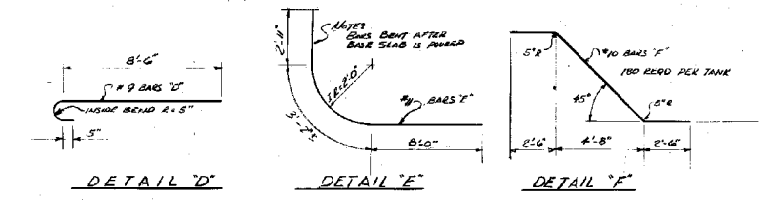
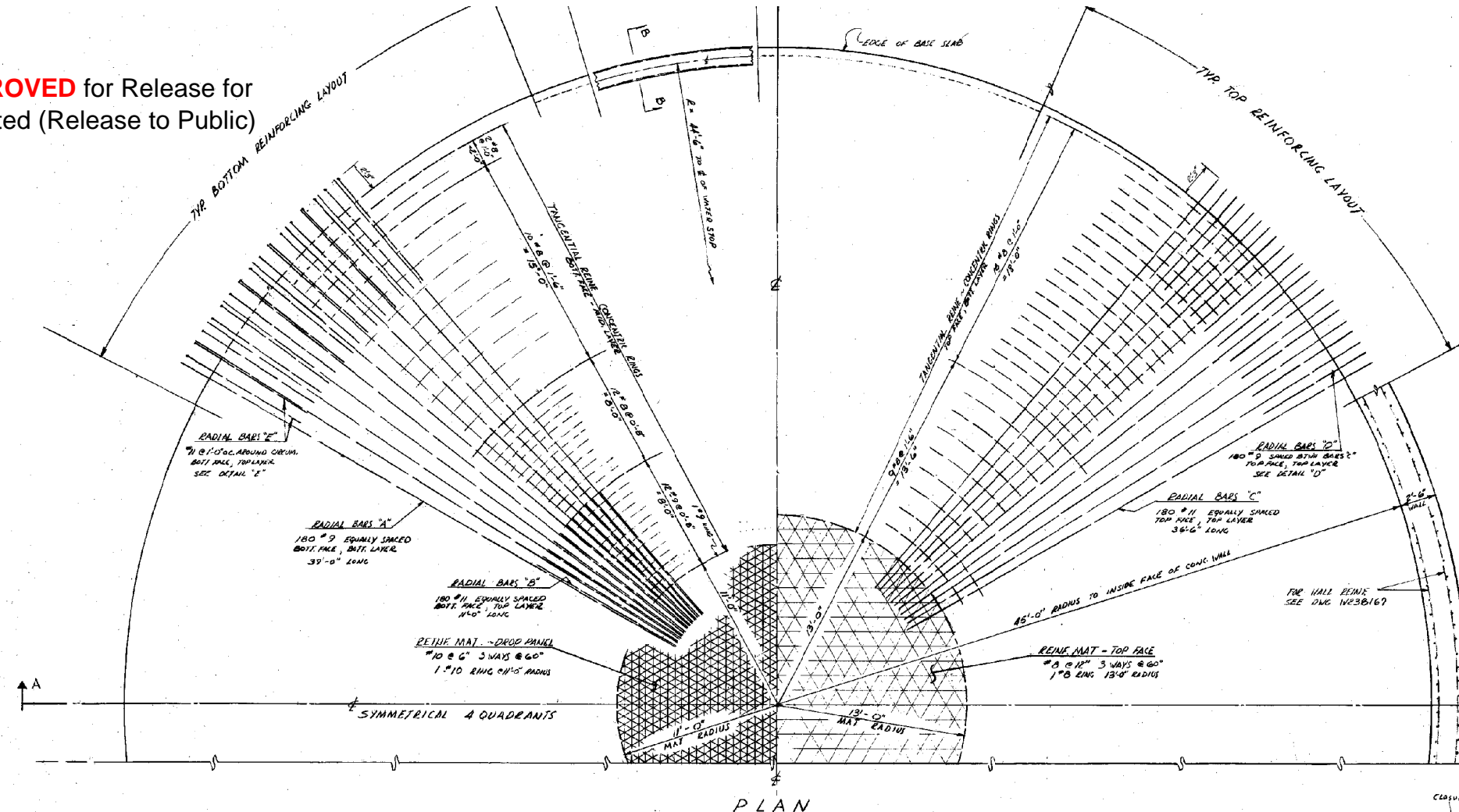


APPROVED for Release for Unlimited (Release to Public)



- NOTES:
1. FOR GENERAL NOTES SEE V23B153
 2. FOR LOCATION OF TANK SEE V23B155
 3. BASE SLAB CONCRETE TO BE CLASS "C" PER SB 6A
 4. ALL REBAR LAPPS TO BE LAPPED AT LEAST 30 BAR DIAMS UNLESS NOTED
 5. FOR EL TOP OF WORKING SLABS SEE V23B154

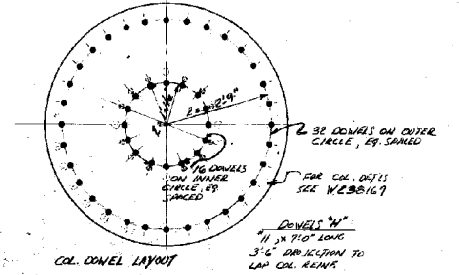
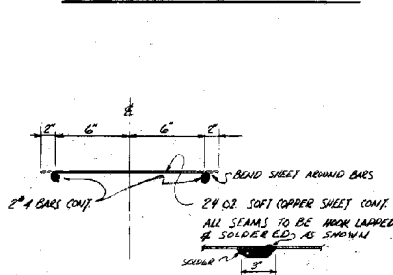
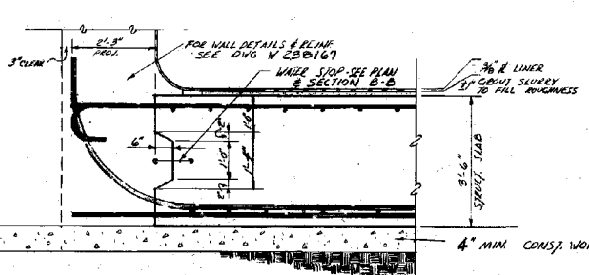
INVENTORIED BY JSD
DATE 3/30/94

THIS DOCUMENT CONTAINS INFORMATION RELATING TO ACTIVITIES OF THE ATOMIC ENERGY COMMISSION NOT TO BE REPRODUCED OR RELEASED WITHOUT PRIOR APPROVAL.

BLDG.	PROJ.	DA	DWG. #	LATEST REVISION
241-11F	950974	10	43	2

SAVANNAH RIVER PLANT
200 AREA BLDG 241-11F
HIGH LEVEL WASTE STORAGE FACILITIES
BASE SLAB PLAN-SECTIONS & DETAILS
CONCRETE

RMD REVIEWED AT REV. DATE 10-2-94



PROJ. NO.	REVISIONS	REVISED BY	CHECKED BY	APPROVED BY	PROJ. NO.	REVISIONS	REVISED BY	CHECKED BY	APPROVED BY	PROJ. NO.	REVISIONS	REVISED BY	CHECKED BY	APPROVED BY	PROJ. NO.	REVISIONS	REVISED BY	CHECKED BY	APPROVED BY	

REPRODUCED FROM W236495

REF. DRAWING	DATE
W23613	
W23614	
W23615	
W23615A	

PROJECT 950974 JAN 7 1995
SCALE 1/4" = 1'-0" (SHOWN UNLESS NOTED)
DRAWN C. M. H. L. E. N.
CHECKED J. J. L. O. G. A. N.
APPROVED BY [Signature]
APPROVED BY [Signature]

THIS DRAWING HAS BEEN FURNISHED BY E. I. DU PONT DE NEMOURS & CO. THE INFORMATION AND KNOWLEDGE THEREON MAY NOT BE USED FOR THE DRAWING REPRODUCED WITHOUT THE WRITTEN PERMISSION OF DU PONT. ALL REPRODUCTIONS IN WHOLE OR IN PART, INCLUDING VENDOR'S SHOP DRAWINGS, SHALL BEAR OR REFER TO THIS STAMP.

E. I. D. ENGINEERING DEPT. CONTROL - SRS COMPANY
60224630
ENGINEERING DEPARTMENT
W238169