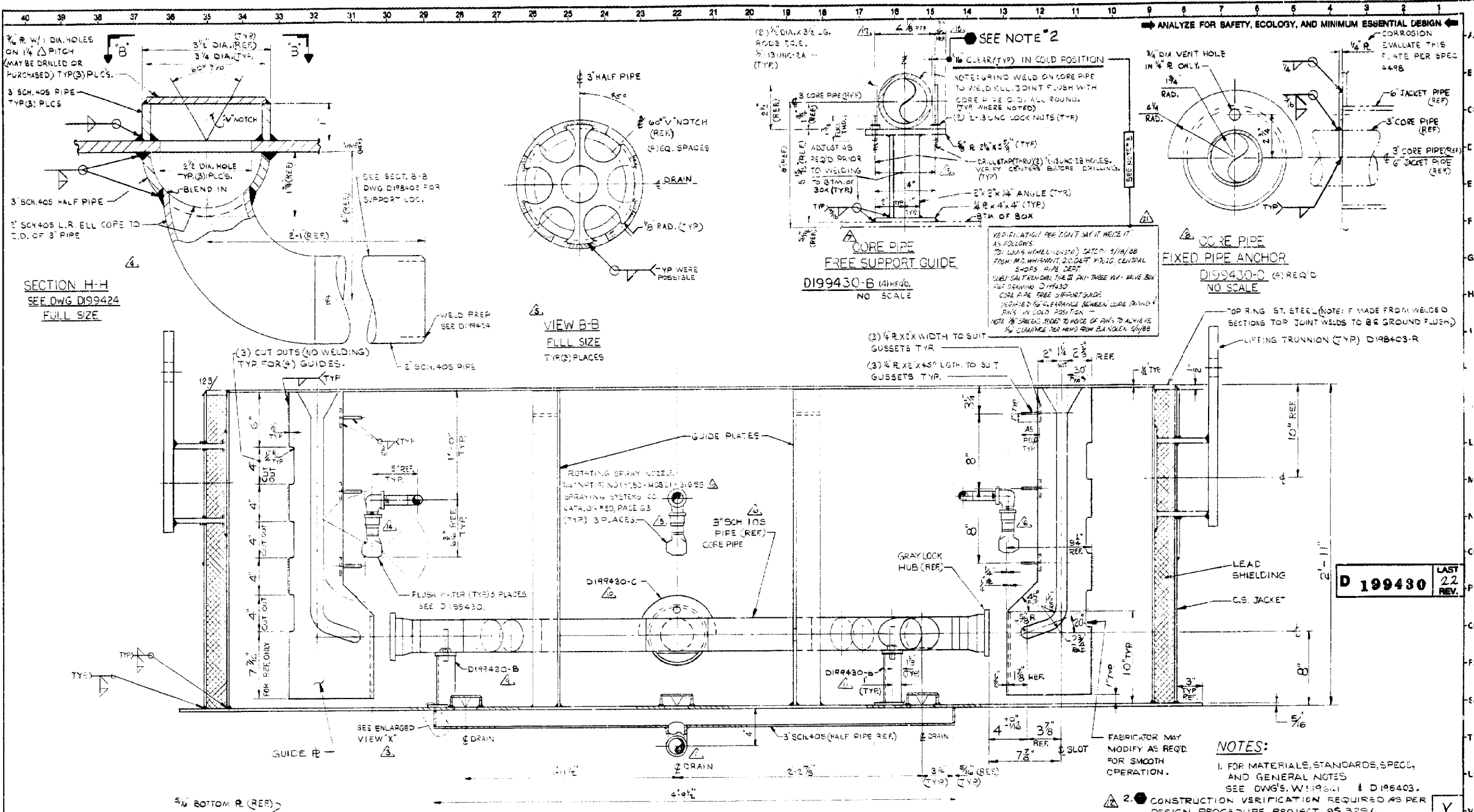


ORIGINAL DRAWING MADE ON DU PONT POLYESTER FILM



SECTION H-H  
SEE DWG D199424  
FULL SIZE

VIEW B-B  
FULL SIZE  
TYP(3) PLACES

SECTION A-A  
SEE DWG. D199424  
APPROX. WT. 9,500 LBS.  
INCL. WT OF (3) VALVE ASSEMBLIES

CORE PIPE  
FREE SUPPORT GUIDE  
D199430-B (4) REQD.  
NO SCALE

CORE PIPE  
FIXED PIPE ANCHOR  
D199430-C (4) REQD.  
NO SCALE

D 199430 LAST 22 REV.

M/F 27 D 199430 LAST 22 REV.

NOTES:  
 1. FOR MATERIALS, STANDARDS, SPEC., AND GENERAL NOTES SEE DWGS. W119611 & D196403.  
 2. CONSTRUCTION VERIFICATION REQUIRED AS PER DESIGN PROCEDURE PROJECT 95 3297.  
 3. VERIFICATION COMPLETE

RMS REVIEWED AT REV. 33 DATE 12/10/95

THIS DOCUMENT CONTAINS INFORMATION RELATING TO ACTIVITIES OF THE U.S. DEPARTMENT OF ENERGY. NOT TO BE REPRODUCED OR RELEASED WITHOUT PRIOR APPROVAL.

SAVANNAH RIVER PLANT  
 BLDG 241F W378 FAREA  
 SALT REMOVAL TYPE III PH I  
 THREE VALVE BOX  
 ELEVATION SH 2

TOLERANCES ON ALL DIMENSIONS, UNLESS OTHERWISE NOTED, TO BE:  
 ANGLES ± 0°30'  
 DECIMALS:  
 1-PLACE ± 0.05 IN  
 FRACTIONS ± 1/16" 2-PLACE ± 0.01 IN

PROJ. NO.	REVISION	RVSD/CHKD/APPD. DATE	PROJ. NO.	REVISION	RVSD/CHKD/APPD. DATE	PROJ. NO.	REVISION	RVSD/CHKD/APPD. DATE	DWGS	STDS	PROJECT	SCALE	DATE
199430	1	12/10/95	199430	1	12/10/95	199430	1	12/10/95	D199424		95 3297	3/4" = 1'-0"	12-13-95
	2			2			2		D199424				
	3			3			3		D196403				
	4			4			4						
	5			5			5						
	6			6			6						
	7			7			7						
	8			8			8						
	9			9			9						
	10			10			10						
	11			11			11						
	12			12			12						
	13			13			13						
	14			14			14						
	15			15			15						
	16			16			16						
	17			17			17						
	18			18			18						
	19			19			19						
	20			20			20						
	21			21			21						
	22			22			22						
	23			23			23						
	24			24			24						
	25			25			25						
	26			26			26						
	27			27			27						
	28			28			28						
	29			29			29						
	30			30			30						
	31			31			31						
	32			32			32						
	33			33			33						
	34			34			34						
	35			35			35						
	36			36			36						
	37			37			37						
	38			38			38						
	39			39			39						
	40			40			40						

D 199430