

ACCELERATED DOCUMENT DISTRIBUTION SYSTEM

REGULATORY INFORMATION DISTRIBUTION SYSTEM (RIDS)

ACCESSION NBR: 9302230151 DOC. DATE: 93/02/18 NOTARIZED: YES DOCKET #
 FACIL: 50-305 Kewaunee Nuclear Power Plant, Wisconsin Public Service 05000305
 AUTH. NAME AUTHOR AFFILIATION
 STEINHARDT, C.R. Wisconsin Public Service Corp.
 RECIP. NAME RECIPIENT AFFILIATION
 Document Control Branch (Document Control Desk)

SUBJECT: Updates 920917 response to Suppl 1 to GL 87-02 on SQUG
 resolution of USI A-46. Util will be performing A-46
 walkdowns at plant during 1993 refueling outage scheduled
 to begin 930305.

DISTRIBUTION CODE: A025D COPIES RECEIVED: LTR 1 ENCL 1 SIZE: 29
 TITLE: Seismic Qualification of Equipment in Operating Plants - A-46

NOTES:

	RECIPIENT ID CODE/NAME	COPIES LTR ENCL	RECIPIENT ID CODE/NAME	COPIES LTR ENCL
	PD3-3 LA	2 2	PD3-3 PD	1 1
	HANSEN, A.	1 1		
INTERNAL:	ACRS	6 6	NRR/DET CHEN, P	4 4
	NRR/DET/ESGB	2 2	NRR/DST/SELB	1 1
	NRR/DST/SICB	1 1	NRR/DST/SPLB	1 1
	NRR/DST/SRXB	1 1	NRR/PD1-3	1 1
	OGC/HDS1	1 1	<u>REG FILE</u> 01	1 1
EXTERNAL:	NRC PDR	1 1		

NOTE TO ALL "RIDS" RECIPIENTS:

PLEASE HELP US TO REDUCE WASTE! CONTACT THE DOCUMENT CONTROL DESK,
 ROOM P1-37 (EXT. 504-2065) TO ELIMINATE YOUR NAME FROM DISTRIBUTION
 LISTS FOR DOCUMENTS YOU DON'T NEED!

TOTAL NUMBER OF COPIES REQUIRED: LTR 24 ENCL 24

R
I
D
S
/
A
D
D
S
/
A
D
D
S



WISCONSIN PUBLIC SERVICE CORPORATION

600 North Adams • P.O. Box 19002 • Green Bay, WI 54307-9002

February 18, 1993

U.S. Nuclear Regulatory Commission
ATTN: Document Control Desk
Washington, D.C. 20555

Ladies/Gentlemen:

Docket 50-305
Operating License DPR-43
Kewaunee Nuclear Power Plant
Generic Letter 87-02, SQUG Resolution of USI A-46

- Reference: 1) 1) Letter from C.R. Steinhardt (WPSC) to the NRC Document Control Desk dated September 17, 1992.
- 2) Letter from A.G. Hansen (NRC) to C.A. Schrock (WPSC) dated December 22, 1992.
- 3) Letter from N.P. Smith (SQUG) to J.G. Partlow (NRC) dated December 23, 1992.
- 4) Letter from J.G. Partlow (NRC) to N.P. Smith (SQUG) dated January 20, 1993.
- 5) John A. Blume & Associates, Engineers, "Kewaunee Nuclear Power Plant - Earthquake Analysis: Reactor-Auxiliary-Turbine Building Response Acceleration Spectra," JAB-PS-03, February 16, 1971.
- 6) Teleconference between WPSC and NRC on February 5, 1993.

220036

4025

In reference 1, Wisconsin Public Service Corporation (WPSC) submitted to the NRC our response to Generic Letter 87-02 Supplement 1. In that letter, WPSC committed to the Seismic Qualification Utility Group (SQUG) commitments set forth in the Generic Implementation Procedure (GIP) in their entirety. WPSC also stated that we would be generally guided by the remaining (non-commitment) sections of the GIP, i.e. the GIP implementation guidance. WPSC also submitted a description of the in-structure response spectra that we intend to use in the A-46 project at the Kewaunee Nuclear Power Plant (KNPP). The NRC responded in reference 2 accepting the in-structure response spectra, but stating that reference 1 was incomplete because WPSC did not entirely commit to the GIP implementation guidance, nor provide any alternative criteria. This submittal serves as an update to reference 1 and provides WPSC's commitment to the GIP, additional details on the in-structure response spectra, and notice of our plans to change the KNPP licensing basis in regards to seismic verification.

I. COMMITMENT TO GIP

Because most of the USI A-46 licensees did not entirely commit to the GIP implementation guidance, SQUG submitted a generic response to the NRC staff concern in reference 3. WPSC endorses the SQUG commitment made in reference 3, namely that WPSC's actions will be in accordance with Part I, Section 1.3 of the GIP, Rev. 2 (Corrected February 14, 1992), which was accepted by the NRC staff in its SSER No. 2 on the GIP, dated May 22, 1992. The NRC responded to SQUG in a letter dated January 20, 1993 (reference 4), stating that it "considers this position as committing to the entire GIP-2, including both the SQUG commitments and the implementation guidance, and thus, this approach is acceptable for resolving USI A-46. The Staff acknowledges that such a commitment does not preclude a licensee from deviating from the GIP-2 implementation guidance if any such deviations are in accordance with GIP-2, Part I, Section 1.3, as supplemented by the Staff's SSER No. 2." Currently, WPSC plans on following both the SQUG commitments and implementation guidance in the A-46 project for the KNPP.

II. IN-STRUCTURE RESPONSE SPECTRA

In Attachment 1 of reference 1, WPSC described the procedures and criteria used to generate the in-structure response spectra to be used for the A-46 project. WPSC provided two examples of the 5 percent damped in-structure response spectra. We stated that the spectra provided were unbroadened and would be converted to broadened spectra per the Standard Review Plan prior to the A-46 walkdowns. In fact, the response spectra provided were already broadened.

As stated in Attachment 1 of reference 1, WPSC used the original design basis response spectra at 0.5 percent and 1 percent damping to generate damping independent acceleration power spectral densities (PSD's). The acceleration PSD's were then converted back to acceleration response spectra at 5 percent damping. The original design basis spectra are considered as

broadened spectra since the Blume report (reference 5) states that "Based on our experience and judgement, the width of the peaks on the spectra have been widened to account for variability of the foundation springs."

The 5 percent damping curves provided in reference 1 are shown in Figures 1 and 2 of Attachment 1 to this letter. These spectra appear to be unbroadened because of the scale the curves were plotted on (0 to 35 Hz) as compared to the scale the original design basis curves were plotted on (0 to 2 seconds). Figures 5 and 6 are identical to the curves provided in Figures 1 and 2 except that they are plotted on a 0 to 25 Hz log-log scale. The original design basis curves are shown in Figures 3 and 4. Figures 7 and 8 show the response spectrum is consistent with the PSD for the 0.06g horizontal and 0.04g vertical ground motion. These figures are included to show the precision of the fitted data.

WPSC cannot determine the extent to which the original design basis response spectra curves were broadened because the original unbroadened curves cannot be reconstructed from the data available in reference 5. However, by observation the design basis curves appear to not be broadened the +/- 15 percent as recommended in the Standard Review Plan. It should be noted that the Standard Review Plan did not exist when the original design basis curves were developed. WPSC believes that this is a minor technical issue because the natural frequencies for most, if not all, of the equipment on the Draft Safe Shutdown Equipment List (SSEL) are much higher than the frequency associated with the peak acceleration as shown in Figures 5 and 6 (approximately 2 Hz). A copy of the Draft SSEL Master List is provided in Attachment 2 to this letter for your information. If, during the A-46 walkdowns, it is determined that there is any equipment with natural frequencies within +/- 25 percent of the frequency associated with the peak acceleration, WPSC will use the peak acceleration as the input motion for that piece of equipment. WPSC feels that this methodology satisfies the intent of the GIP, and discussions with NRC staff on February 5, 1993 (reference 6), indicated that this method would be acceptable. WPSC has developed a revised set of curves, which include Figures 5 and 6, to be used during the walkdowns scheduled for the 1993 refueling outage at the KNPP.

III. WPSC SEISMIC LICENSING BASIS

WPSC intends to change its licensing basis methodology to permit the use of SQUG methodology for verifying the seismic adequacy of new and replacement electrical and mechanical equipment prior to receipt of a final plant-specific Safety Evaluation Report resolving USI A-46. The licensing basis change will be conducted under 10 C.F.R. 50.59 and will be consistent with the guidance in Section 2.3.3 of Part I of the GIP, Rev. 2 (Corrected February 14, 1992), which was accepted by the NRC staff in its SSER No. 2 on the GIP, dated May 22, 1992. Any necessary changes to the KNPP Updated Safety Analysis Report will be provided in accordance with 10 C.F.R. 50.71(e).

Document Control Desk
February 18, 1993
Page 4

WPSC will be performing the A-46 walkdowns at the KNPP during the 1993 refueling outage scheduled to begin March 5, 1993. If there are any questions regarding this submittal, please contact a member of my staff.

Sincerely,

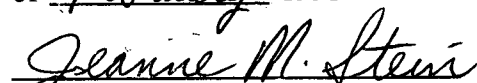


C. R. Steinhardt
Senior Vice President-Nuclear Power

Attach.

cc - US NRC - Region III
Mr. Patrick Castleman, US NRC

Subscribed and Sworn to
Before Me This 18th Day
of February 1993


Notary Public, State of Wisconsin

My Commission Expires:

June 18, 1995

LIC\NRC\3.WP

ATTACHMENT 1

to

Letter from C. R. Steinhardt (WPSC)

to

Document Control Desk (NRC)

Dated February 18, 1993

BUILDING :Reactor-Auxiliary-Turbine
MOTION :Dames & Moore(0.12G)
DIRECTION :Horizontal, NS and EW
MASS POINTS :5,6,7,8,11,12,13,14,15
22,23,21,27,33,34,36

Kewaunee Floor Response Spectra

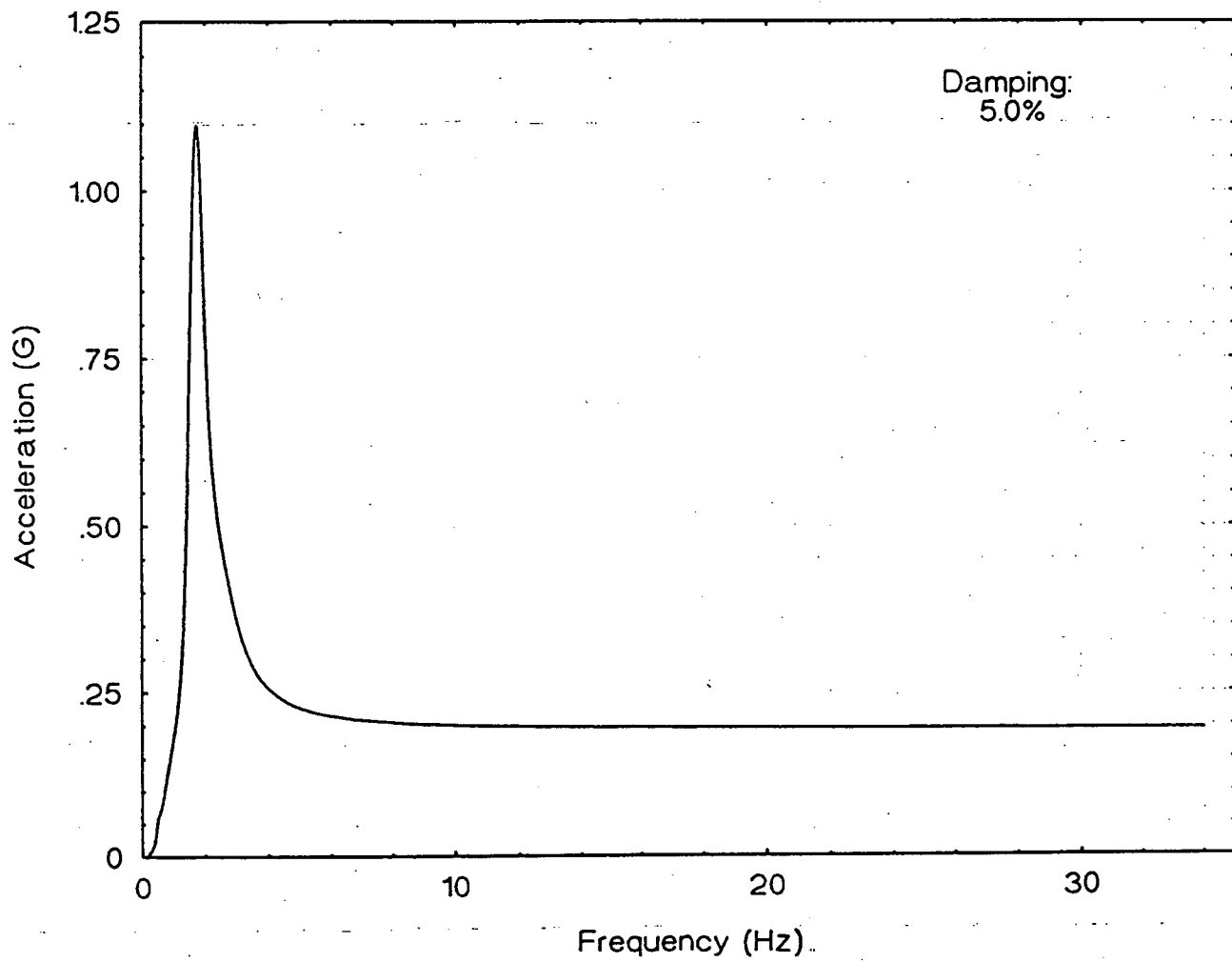


Figure 1

BUILDING :Reactor-Auxiliary-Turbine
MOTION :Dames & Moore(0.08G)
DIRECTION :Vertical
MASS POINTS :1-15,22,23,30-32
21,27,33,34,36

Kewaunee Floor Response Spectra

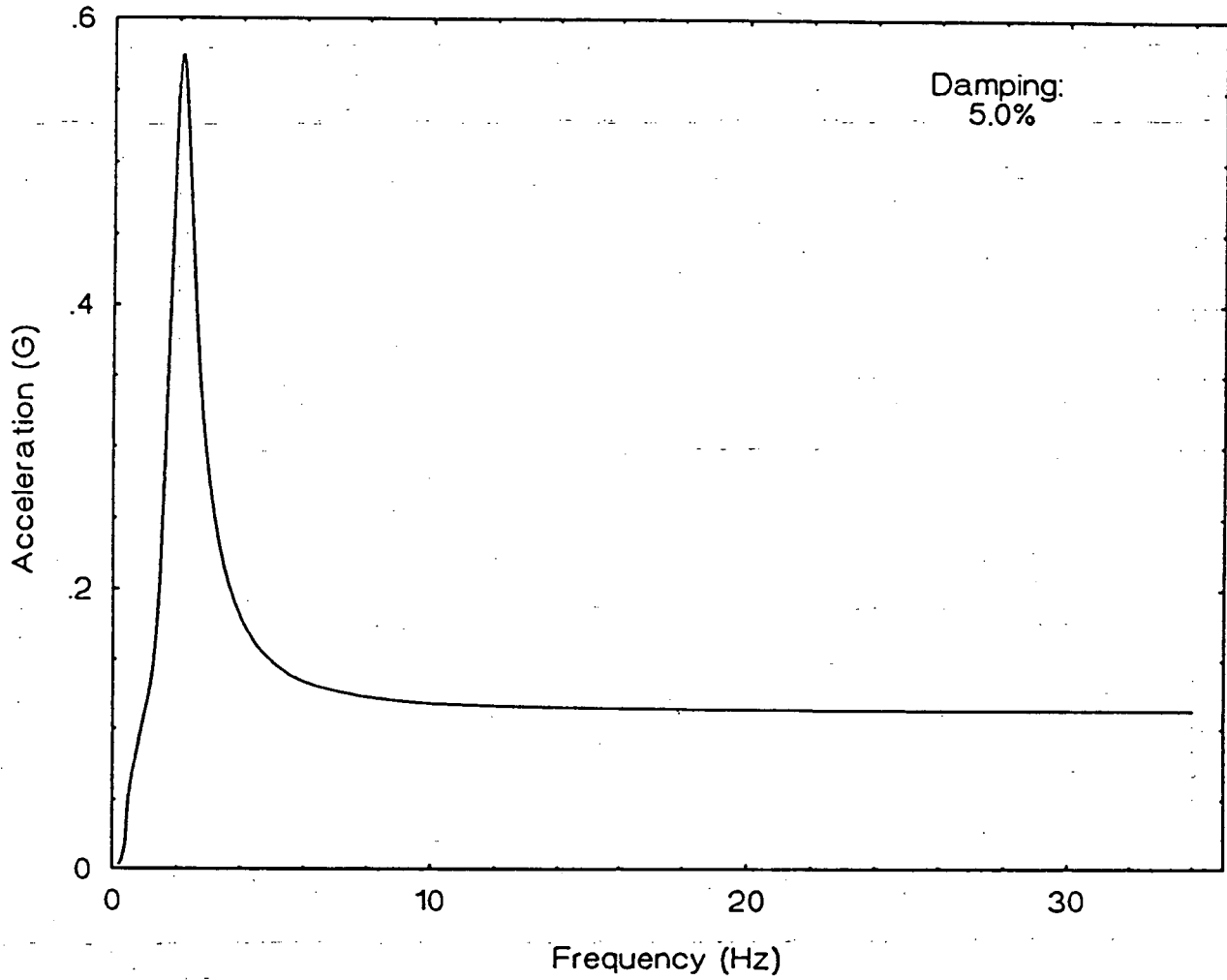


Figure 2

JOHN A. BLUME AND ASSOCIATES, ENGINEERS

KEWALNEE NUCLEAR POWER PLANT
RESPONSE ACCELERATION SPECTRUM
(HORIZONTAL ACCELERATION)

EARTHQUAKE IN N-S OR E-W DIRECTION

MASS POINTS 5,6,7,8,11,12,13,14,15,22,23
21,27,33,34,36

DAMPING RATIO = 0.010

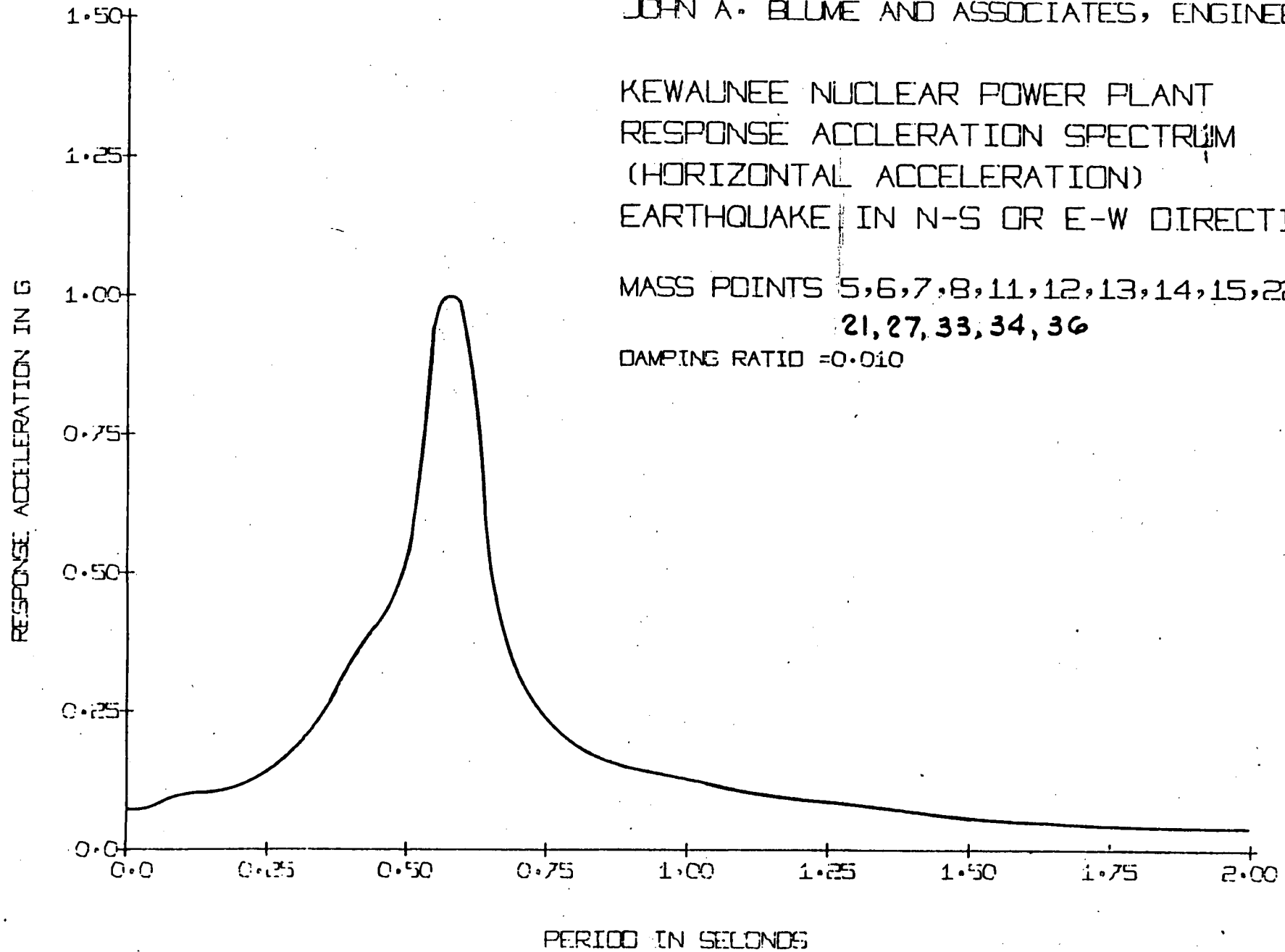


Figure 3

JOHN A. BLUME AND ASSOCIATES, ENGINEERS

KEWAUNEE NUCLEAR POWER PLANT
RESPONSE ACCELERATION SPECTRUM
(VERTICAL ACCELERATION)

EARTHQUAKE IN N-S OR E-W DIRECTION

MASS POINTS 1-15, 22, 23, 30-32, 21, 27, 33, 34, 36

DAMPING RATIO = 0.010

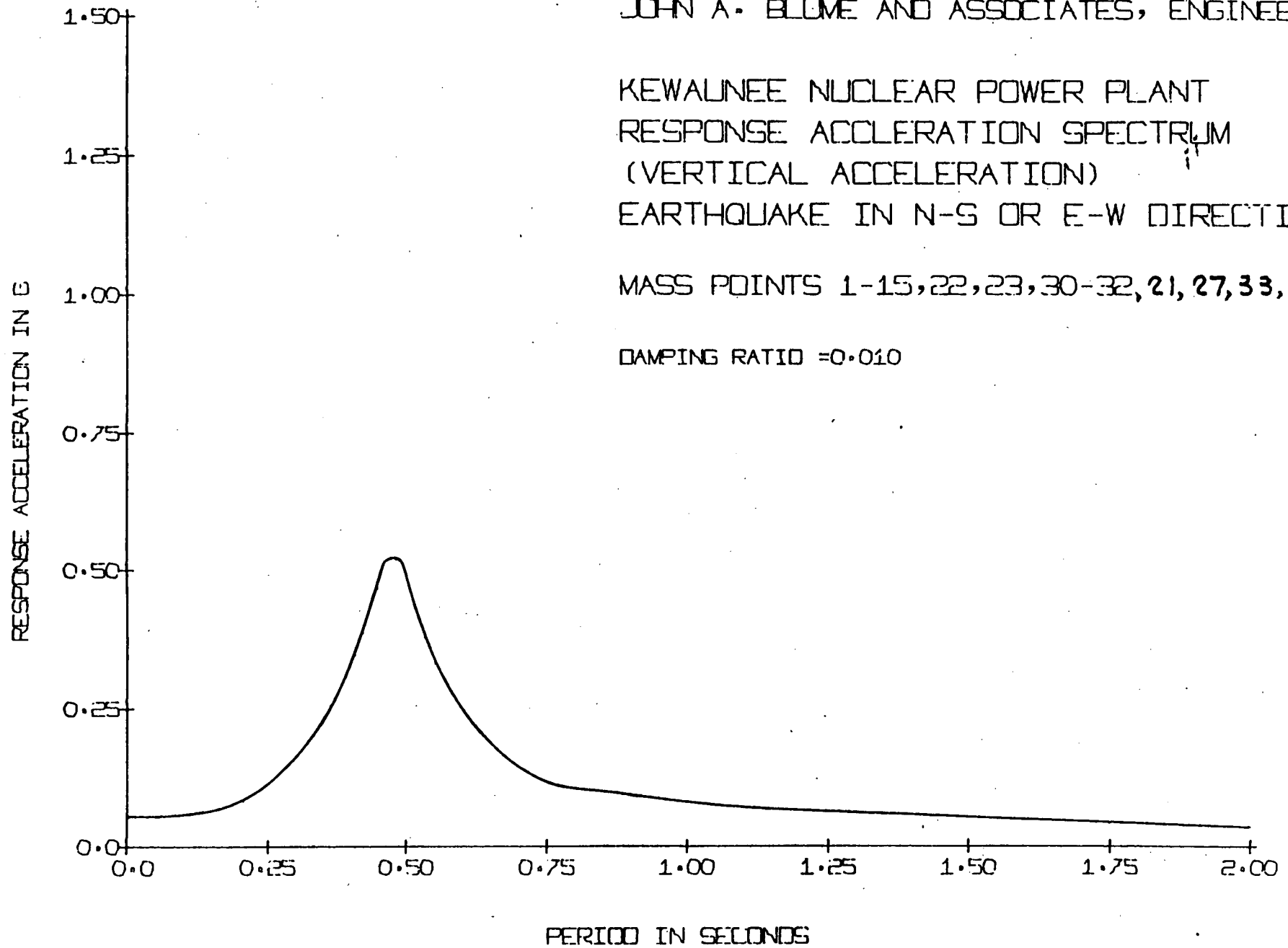


Figure 4

MARCH 6, 1969

FIGURE NO. 4

BUILDING :Reactor-Auxiliary-Turbine
MOTION :Dames & Moore(0.12G)
DIRECTION :Horizontal, NS and EW
MASS POINTS :5,6,7,8,11,12,13,14,15
22,23,21,27,33,34,36

Kewaunee Floor Response Spectra

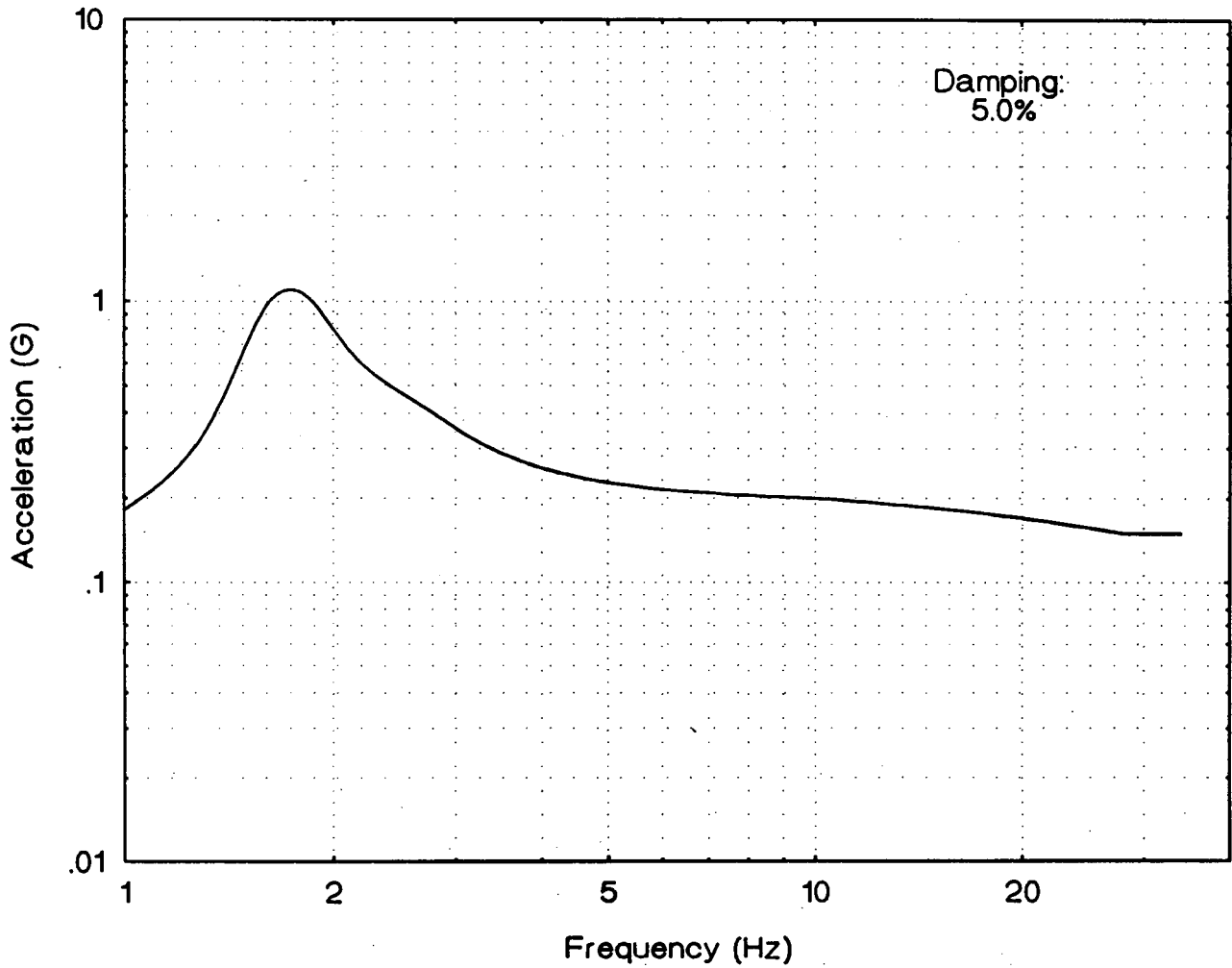


Figure 5

BUILDING :Reactor-Auxiliary-Turbine
MOTION :Dames & Moore(0.08G)
DIRECTION :Vertical
MASS POINTS :1-15,22,23,30-32
21,27,33,34,36

Kewaunee Floor Response Spectra

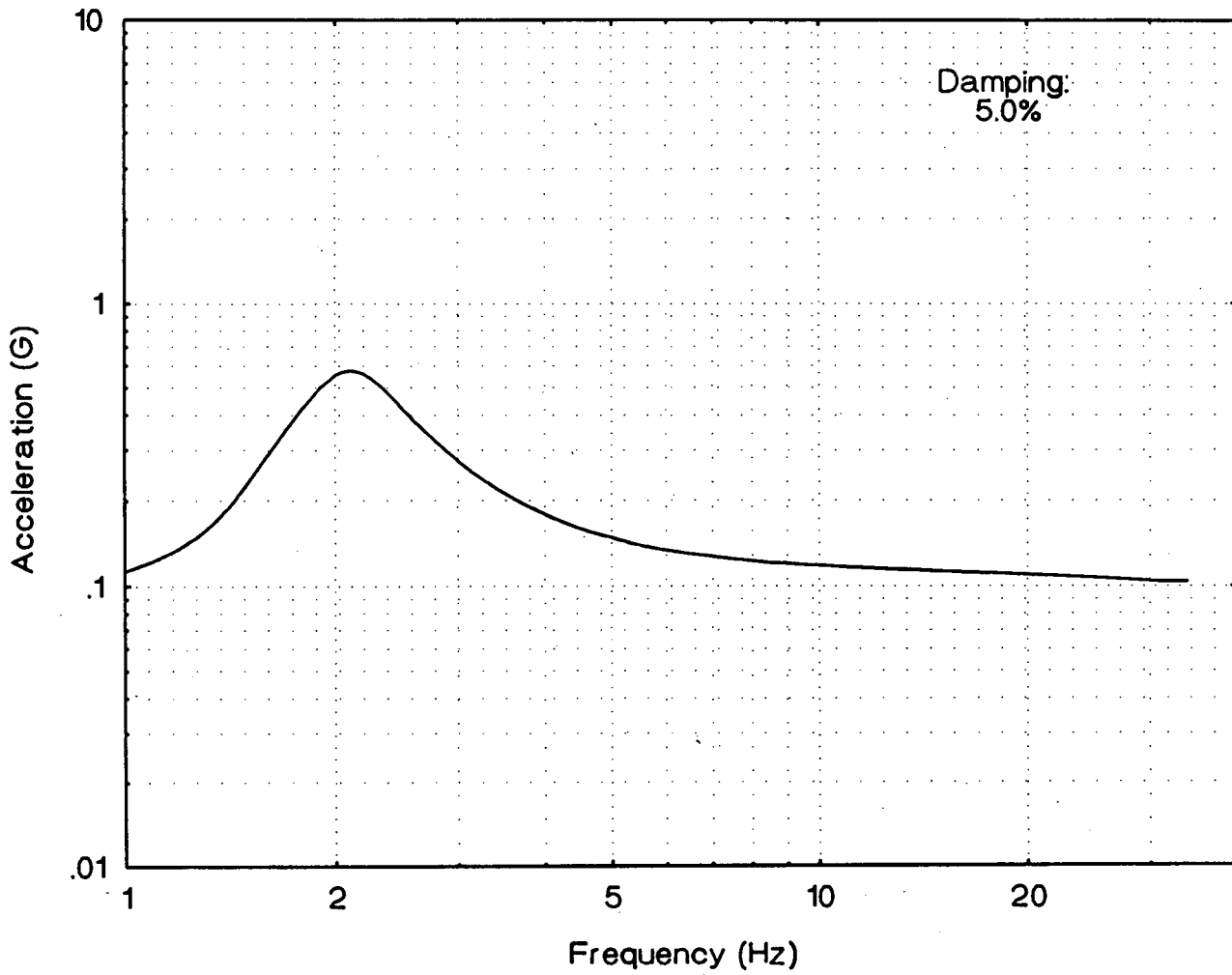


Figure 6

BUILDING :Reactor-Auxiliary-Turbine
MOTION :Dames & Moore(0.06G)
DIRECTION :Horizontal, NS and EW
MASS POINTS :5,6,7,8,11,12,13,14,15
22,23,21,27,33,34,36

Kewaunee Response Spectra Derived vs. Original, 1.0% Damping

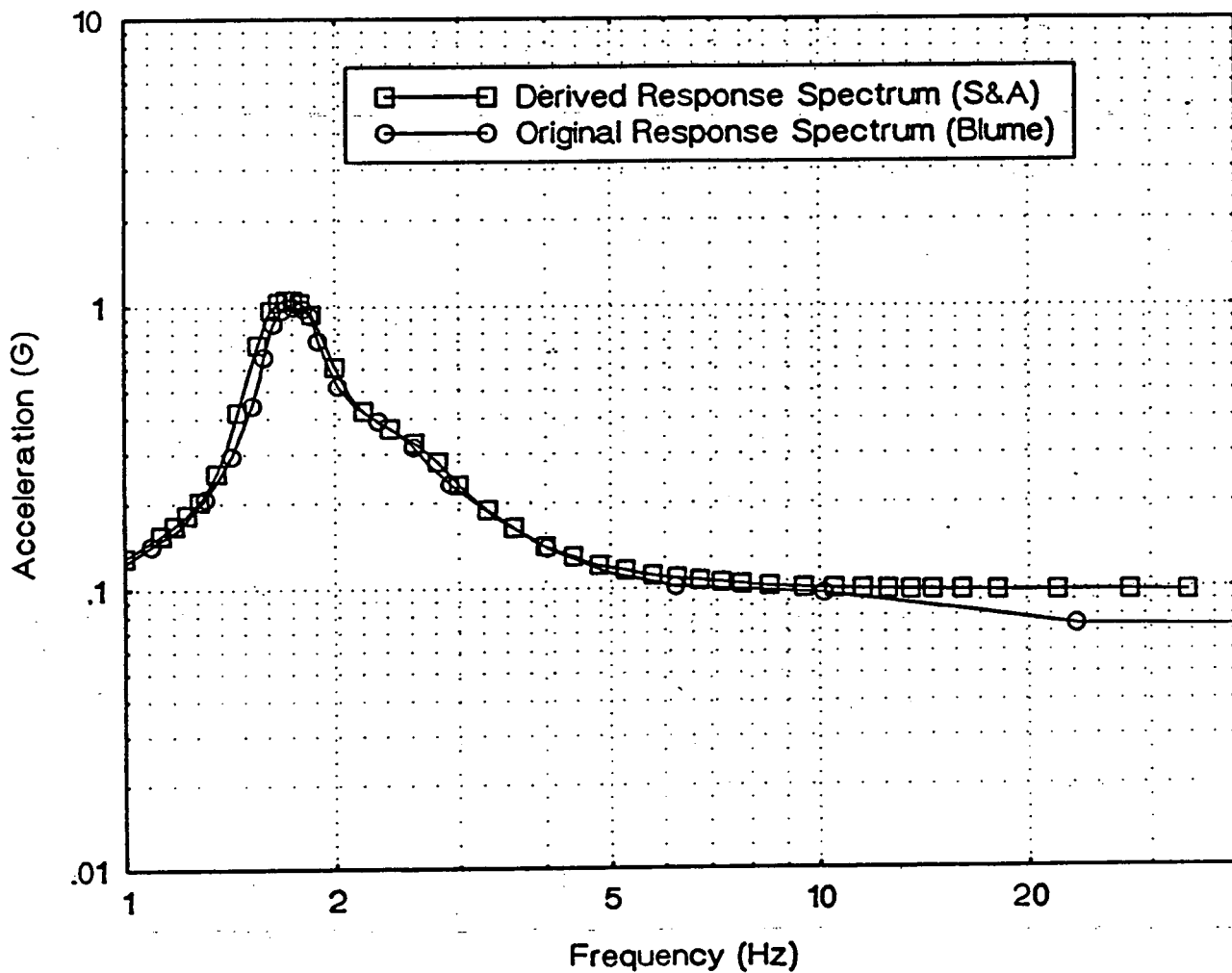


Figure 7

BUILDING :Reactor-Auxiliary-Turbine
MOTION :Dames & Moore(0.04G)
DIRECTION :Vertical
MASS POINTS :1-15,22,23,30-32
21,27,33,34,36

Kewaunee Response Spectra Derived vs. Original, 1.0% Damping

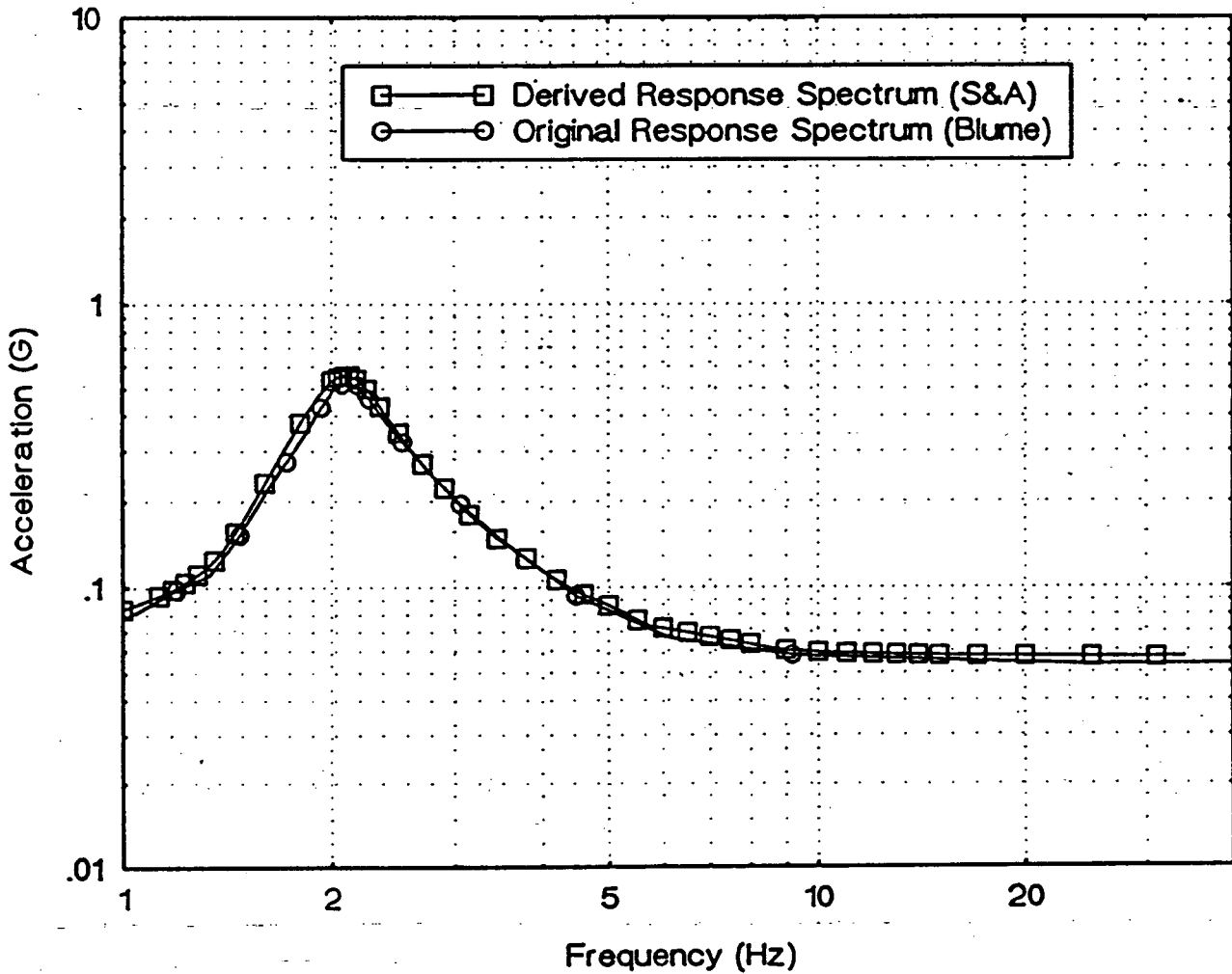


Figure 8

ATTACHMENT 2

to

Letter from C. R. Steinhardt (WPSC)

to

Document Control Desk (NRC)

Dated February 18, 1993

PRELIMINARY COPY

SSEL/PEEE MASTER LIST

Page: 1

EQUIPMENT	PARENT	LIST INDIC	EQUIPMENT DESCRIPTION	BLDG.	ELEV	COL/ROW	FT WALL	DEG	SORT
1-411	153-081	S	MOTOR-BORIC ACID TANK 1A HEATER 1A1	AUX	633	D.2/6.4			R
1-412	153-082	S	MOTOR-BORIC ACID TANK 1B HEATER 1B1	AUX	633	D.2/5.8			R
1-439	153-081	S	MOTOR-BORIC ACID TANK 1A HEATER 1A2	AUX	633	D.4/6.0			R
1-440	153-082	S	MOTOR-BORIC ACID TANK 1B HEATER 1B2	AUX	633	D.4/5.5			R
1-501BKR	BUS5	IS	CIRCUIT BREAKER-TERTIARY AUX TRANSFORMER	ADM	586	AE.8/8.1			S/R
1-502BKR	BUS5	I	CIRCUIT BREAKER-RESIDUAL HEAT REMOVAL PUMP 1A	ADM	586	AE.8/8.0			S/R
1-503BKR	BUS5	IS	CIRCUIT BREAKER-RESERVE AUX TRANSFORMER	ADM	586	AE.8/7.9			S/R
1-504BKR	BUS5	IS	CIRCUIT BREAKER-AUX FEEDWATER PUMP 1A	ADM	586	AE.8/7.8			S/R
1-505BKR	BUS5	IS	CIRCUIT BREAKER-XMFER S1 AND S2 SUPPLY	ADM	586	AE.8/7.7			S/R
1-506BKR	BUS5	IS	CIRCUIT BREAKER-SERVICE WATER 1A1	ADM	586	AE.8/7.6			S/R
1-507BKR	BUS5	IS	CIRCUIT BREAKER-SERVICE WATER PUMP 1A2	ADM	586	AE.8/7.6			S/R
1-508BKR	BUS5	IS	CIRCUIT BREAKER-SAFETY INJECTION PUMP 1A	ADM	586	AE.8/7.5			S/R
1-509BKR	BUS5	IS	CIRCUIT BREAKER-DIESEL GEN 1A	ADM	586	AE.8/7.4			S/R
1-510BKR	BUS5	S	CIRCUIT BREAKER-BUS TIE BREAKER TO 1-602BKR	ADM	586	AE.8/7.3			S/R
1-511BKR	BUS5	S	CIRCUIT BREAKER-MAIN AUX TRANSFORMER	ADM	586	AE.8/7.3			S/R
1-601BKR	BUS6	IS	CIRCUIT BREAKER-RESERVE AUX TRANSFORMER	ADM	586	AE.8/6.6			S/R
1-602BKR	BUS6	S	CIRCUIT BREAKER-BUS TIE BREAKER TO 1-510 BKR	ADM	586	AE.8/6.5			S/R
1-603BKR	BUS6	IS	CIRCUIT BREAKER-DIESEL GEN 1B	ADM	586	AE.8/6.4			S/R
1-604BKR	BUS6	IS	CIRCUIT BREAKER-AUX FEEDWATER PUMP 1B	ADM	586	AE.8/6.3			S/R
1-605BKR	BUS6	I	CIRCUIT BREAKER-RESIDUAL HEAT REMOVAL PUMP 1B	ADM	586	AE.8/6.3			S/R
1-606BKR	BUS6	IS	CIRCUIT BREAKER-SAFETY INJECTION PUMP 1B	ADM	586	AE.8/6.2			S/R
1-607BKR	BUS6	IS	CIRCUIT BREAKER-STATION SERVICE TRANSF 1-61 1-62	ADM	586	AE.8/6.4			S/R
1-608BKR	BUS6	IS	CIRCUIT BREAKER-SERVICE WATER PUMP 1B1	ADM	586	AE.8/6.1			S/R
1-609BKR	BUS6	IS	CIRCUIT BREAKER-SERVICE WATER PUMP 1B2	ADM	586	AE.8/6.0			S/R
1-610BKR	BUS6	S	CIRCUIT BREAKER-MAIN AUX TRANSFORMER	ADM	586	AE.8/5.9			S/R
1-611BKR	BUS6	IS	CIRCUIT BREAKER-TERTIARY AUX TRANSFORMER	ADM	586	AE.8/5.8			S/R
101-011		I	ACCUMULATOR-ACCUMULATOR 1A	CONT	595		8	239	
101-012		I	ACCUMULATOR-ACCUMULATOR 1B	CONT	595		17	14	
113-021		IS	COMPRESSOR-STA AND INST AIR COMP 1A	TURB	586	A.1/7.6			S/R
113-022		IS	COMPRESSOR-STA AND INST AIR COMP 1B	TURB	586	D.5/8.8			S/R
113-023		IS	COMPRESSOR-STA AND INST AIR COMP 1C	TURB	586	B.0/8.2			S/R
132-051		S	FAN-BATTERY ROOM EXHAUST FAN 1A	TURB	593	D1.5/8.9			S/R
132-052		S	FAN-BATTERY ROOM EXHAUST FAN 1B	TURB	606	F.0/8.0			S/R
132-081		IS	FAN-DIESEL GENERATOR ROOM VENT SUPPLY FAN 1A	ADM	586	AE.2/8.8			S/R
132-082		IS	FAN-DIESEL GENERATOR ROOM VENT SUPPLY FAN 1B	ADM	586	AE.2/5.3			S/R
132-181		S	FAN-SCREENHOUSE EXHAUST FAN 1A	SH	586	6			S/R
134-031		IS	GENERATOR-DIESEL GENERATOR 1A	ADM	586	AE.3/8.0			S/R
134-032		IS	GENERATOR-DIESEL GENERATOR 1B	ADM	586	AE.3/6.0			S/R
134-041		I	GENERATOR-TSC DIESEL GEN	TSC	606	EO.2/12.5			S/R
135-031		S	HEAT EXCHANGER-REGENERATIVE HEAT EXCHANGER	CONT	592		4	315	S
135-051		I	HEAT EXCHANGER-RESIDUAL HEAT EXCHANGER 1A	AUX	606	J.5/7.2			S
135-052		I	HEAT EXCHANGER-RESIDUAL HEAT EXCHANGER 1B	AUX	606	J.5/6.6			S
135-081		IS	HEAT EXCHANGER-COMPONENT COOLING HX 1A	AUX	608	J.3/8.7			S
135-082		IS	HEAT EXCHANGER-COMPONENT COOLING HX 1B	AUX	608	J.3/8.5			S
135-515	145-131	I	COOLER-PUMP 1A GLAND SEAL COOLER	AUX	587	G.8/5.6			S

2/15/93 REV #6

PRELIMINARY COPY

SSEL/PEEE MASTER LIST Page: 2

EQUIPMENT	PARENT	LIST INDIC	EQUIPMENT DESCRIPTION	BLDG.	ELEV	COL/ROW	FT WALL	DEG	SORT
135-516	145-132	I	COOLER-PUMP 1B GLAND SEAL COOLER	AUX	587	G.3/5.3			S
145-031		IS	PUMP-SAFETY INJECTION PUMP 1A	AUX	586	H.5/5.8			S/R
145-032		IS	PUMP-SAFETY INJECTION PUMP 1B	AUX	586	HW.5/5.7			S/R
145-101		IS	PUMP-CHARGING PUMP 1A	AUX	586	H.2/6.3			S/R
145-102		IS	PUMP-CHARGING PUMP 1B	AUX	586	H.6/6.3			S/R
145-103		IS	PUMP-CHARGING PUMP 1C	AUX	586	HW.5/6.3			S/R
145-111		I	PUMP-BORIC ACID TRANSFER PUMP 1A	AUX	606	H.4/5.7			S/R
145-112		I	PUMP-BORIC ACID TRANSFER PUMP 1B	AUX	606	H.8/5.7			S/R
145-131		I	PUMP-CONTAINMENT SPRAY PUMP 1A	AUX	586	G.4/5.7			S/R
145-132		I	PUMP-CONTAINMENT SPRAY PUMP 1B	AUX	586	G.4/5.3			S/R
145-141		I	PUMP-RESIDUAL HEAT REMOVAL PUMP 1A	AUX	569	J.5/6.5			S/R
145-142		I	PUMP-RESIDUAL HEAT REMOVAL PUMP 1B	AUX	569	J.5/6.5			S/R
145-151		IS	PUMP-COMPONENT COOLING PUMP 1A	AUX	607	K.3/8.8			S/R
145-152		IS	PUMP-COMPONENT COOLING PUMP 1B	AUX	607	K.7/8.8			S/R
145-411		IS	PUMP-AUXILIARY FEEDWATER PUMP 1A	TURB	588	E.7/8.5			S/R
145-412		IS	PUMP-AUXILIARY FEEDWATER PUMP 1B	TURB	588	F.3/8.6			S/R
145-413		I	PUMP-TURBINE DRIVEN AUXILIARY FEEDWATER PUMP	TURB	586	E.0/8.8			S/R
145-441		IS	PUMP-SERVICE WATER PUMP 1A1	SH	586	5.8			S/R
145-442		IS	PUMP-SERVICE WATER PUMP 1A2	SH	586	5.1			S/R
145-443		IS	PUMP-SERVICE WATER PUMP 1B1	SH	586	4.9			S/R
145-444		IS	PUMP-SERVICE WATER PUMP 1B2	SH	588	4.1			S/R
145-541		S	PUMP-DIESEL GEN FUEL OIL TRANSFER PUMP 1A	ADM	586	AE.3/4.3			S
145-542		S	PUMP-DIESEL GEN FUEL OIL TRANSFER PUMP 1B	ADM	586	AE.7/4.3			S
145-661	145-411	S	PUMP-AUX FEEDWATER PUMP 1A AUX LUBE OIL PUMP	TURB	586	E.5/8.5			S/R
145-662	145-412	S	PUMP-AUX FEEDWATER PUMP 1B AUX LUBE OIL PUMP	TURB	586	F.3/8.7			S/R
145-721	145-413	I	PUMP-TURB DRIVEN AUX FDWTR PUMP AUX LUBE OIL PUMP	TURB	586	E.0/8.8			S/R
146-441		S	COMPRESSOR-DIESEL GENERATOR START-UP AIR 1A	TURB	586	A.2/8.2			S/R
146-442		S	COMPRESSOR-DIESEL GENERATOR START-UP AIR 1B	TURB	586	A.1/6.3			S/R
14601BKR	BUS46	I	CIRCUIT BREAKER-MAIN BREAKER BUS 1-46	TSC	606	EO.8/11.5			S/R
14603BKR	BUS46	I	CIRCUIT BREAKER-MCC 1-46B	TSC	606	EO.8/11.4			S/R
14604BKR	BUS46	I	CIRCUIT BREAKER-DIESEL GENERATOR BUS TIE BKR	TSC	606	EO.8/11.4			S/R
14607BKR	BUS46	I	CIRCUIT BREAKER-BUS TIE 1-46 TO 1-52	TSC	606	EO.8/11.5			S/R
15101BKR	BUS51	IS	CIRCUIT BREAKER-MAIN BREAKER BUS 1-51	TURB	586	A.4/8.7			S/R
15104BKR	BUS51	IS	CIRCUIT BREAKER-CONTAINMENT FAN COIL UNIT 1B	TURB	586	A.5/8.7			S/R
15105BKR	BUS51	IS	CIRCUIT BREAKER-CONTAINMENT FAN COIL UNIT 1A	TURB	586	A.5/8.7			S/R
15108BKR	BUS51	I	CIRCUIT BREAKER-CONTAINMENT SPRAY PUMP 1A	TURB	586	A.5/8.7			S
15109BKR	BUS51	I	CIRCUIT BREAKER-COMPONENT COOLING PUMP 1A	TURB	586	A.5/8.7			S/R
15111BKR	BUS51	S	CIRCUIT BREAKER-BUS TIE 1-51 1-61	TURB	586	A.6/8.7			S/R
15123		S	RTD-REACTOR COOLANT LOOP A HOT LEG RTD	CONT	618		24.5	287	S
15124		S	RTD-REACTOR COOLANT LOOP A COLD LEG RTD	CONT	618		28.5	245	R
15125		S	RTD-REACTOR COOLANT LOOP B HOT LEG RTD	CONT	618		35	088	S
15126		S	RTD-REACTOR COOLANT LOOP B COLD LEG RTD	CONT	618		29.5	034	R
15131		S	RTD-REAC CLNT PMP 1A THERM BARRIER RTD	CONT	612		19	240	S
15132		S	RTD-REAC CLNT PMP 1B THERM BARRIER RTD	CONT	611		22	037	S
15201BKR	BUS52	IS	CIRCUIT BREAKER-MAIN BREAKER BUS 1-52	TURB	586	B.1/8.7			S/R

2/15/93 REV #6

PRELIMINARY COPY

SSEL/PEEE MASTER LIST

Page: 3

EQUIPMENT	PARENT	LIST INDIC	EQUIPMENT DESCRIPTION	BLDG.	ELEV	COL/ROW	FT WALL	DEG	SORT
15203BKR	BUS52	I	CIRCUIT BREAKER-CHG PMP 1C 145KVA XFMR	TURB	586	B.1/8.7			
15204BKR	BUS52	IS	CIRCUIT BREAKER-MCC 1-52E	TURB	586	B.1/8.7			S/R
15205BKR	BUS52	IS	CIRCUIT BREAKER-MCC 1-52F EXT VIA MCC 1-52F	TURB	586	B.1/8.7			S/R
15206BKR	BUS52	IS	CIRCUIT BREAKER-MCC 1-52B MCC 1-52C	TURB	586	B.1/8.7			S/R
15208BKR	BUS52	IS	CIRCUIT BREAKER-MCC 1-52A (MCC1-52D VIA MCC 1-52A)	TURB	586	B.0/8.7			S/R
15209BKR	BUS52	IS	CIRCUIT BREAKER-MCC 1-5262 NORMAL SUPPLY	TURB	586	B.0/8.7			S/R
15210BKR	BUS52	I	CIRCUIT BREAKER-BUS TIE 1-52 TO 1-46	TURB	586	B.0/8.7			
15211BKR	BUS52	S	CIRCUIT BREAKER-BUS TIE 1-51 1-61	TURB	586	A.9/8.9			S/R
15212BKR	BUS52	S	CIRCUIT BREAKER-PRESS HTR TRANSF (MCC1-3352 ALT)	TURB	586	A.9/8.9			S/R
153-011		S	TANK-PRESSURIZER RELIEF TANK	CONT	595		20	189	S
153-021		IS	TANK-REFUELING WATER STORAGE TANK	AUX	586	H.0/5.0			S
153-081		IS	TANK-BORIC ACID TANK 1A	AUX	626	H.7/6.2			S
153-082		IS	TANK-BORIC ACID TANK 1B	AUX	626	H.8/5.6			S
153-351		S	TANK-DIESEL GENERATOR FUEL OIL DAY TANK 1A1	ADM	586	AE.0/8.1			S/R
153-352		S	TANK-DIESEL GENERATOR FUEL OIL DAY TANK 1A2	ADM	586	AE.0/7.8			S/R
153-353		S	TANK-DIESEL GENERATOR FUEL OIL DAY TANK 1B1	TURB	586	AE.0/6.2			S/R
153-354		S	TANK-DIESEL GENERATOR FUEL OIL DAY TANK 1B2	TURB	586	AE.0/6.0			S/R
153-361		S	TANK-DIESEL GENERATOR FUEL OIL STORAGE TANK 1A	OEB	586	AE.2/4.0			S/R
153-362		S	TANK-DIESEL GENERATOR FUEL OIL STORAGE TANK 1B	OEB	606	AE.6/4.0			S/R
153-401		S	TANK-COMPONENT COOLING SURGE TANK	AUX	662	GW.6/5.7			S
153-471		I	TANK-TSC FUEL OIL DAY TANK	TSC	606	E.0/11.9			
155-011		IS	FAN COIL UNIT-CONTAINMENT 1A	CONT	637		9	57	S/R
155-012		IS	FAN COIL UNIT-CONTAINMENT 1B	CONT	637		8	36	S/R
155-013		IS	FAN COIL UNIT-CONTAINMENT 1C	CONT	617		32	180	S/R
155-014		IS	FAN COIL UNIT-CONTAINMENT 1D	CONT	617		24	202	S/R
155-031		IS	FAN COIL UNIT-TURBINE BUILDING 1A	TURB	586	C.1/8.9			S/R
155-032		IS	FAN COIL UNIT-TURBINE BUILDING 1B	TURB	586	F.9/8.9			S/R
155-051		I	FAN COIL UNIT-RESIDUAL HEAT PUMP PIT 1A	AUX	568	J.3/6.5			S/R
155-052		I	FAN COIL UNIT-RESIDUAL HEAT PUMP PIT 1B	AUX	568	J.9/6.5			S/R
155-101		IS	FAN COIL UNIT-AUXILIARY BLDG BSMT 1A	AUX	586	G.1/4.5			S/R
155-102		IS	FAN COIL UNIT-AUXILIARY BLDG BSMT 1B	AUX	586	G.1/4.3			S/R
155-111		S	FAN COIL UNIT-AUXILIARY BLDG MEZZ 1A	AUX	606	HW.0/BS.1			S/R
155-112		S	FAN COIL UNIT-AUXILIARY BLDG MEZZ 1B	AUX	606	HW.0/9S.1			S/R
155-211		S	FAN COIL UNIT-BATTERY ROOM 1A	TURB	606	E.0/9.0			S/R
155-212		S	FAN COIL UNIT-BATTERY ROOM 1B	TURB	606	G.0/8.0			S/R
155-271		S	CHARGING PUMP 1C FAN COIL UNIT	AUX	586	HW.5/6.8			S/R
155-272		IS	FAN COIL UNIT-COMPONENT COOLING PUMP 1B	AUX	614	K.8/8.6			S/R
155-273		IS	FAN COIL UNIT-AUXILIARY FEEDWATER PUMP 1A	TURB	586	E.9/8.3			S/R
155-311		I	FAN COIL UNIT-AUX BLDG BSMT FAN COIL 1C	AUX	586	G.4/6.5			S/R
155-312		I	FAN COIL UNIT-AUX BLDG BSMT FAN COIL UNIT 1D	AUX	586	G.4/6.2			S/R
158-011		IS	STRAINER-SERVICE WATER STRAINER 1A1	SH	586	5.7			S/R
158-012		IS	STRAINER-SERVICE WATER STRAINER 1A2	SH	586	5.3			S/R
158-013		IS	STRAINER-SERVICE WATER STRAINER 1B1	SH	586	4.7			S/R
158-014		IS	STRAINER-SERVICE WATER STRAINER 1B2	SH	586	4.1			S/R
16092		IS	SWITCH-DIESEL GEN 1B PRMRY AIR START PS	TURB	590	A.2/6.2			R

2/15/93 REV #6

PRELIMINARY COPY

SSEL/PEEE MASTER LIST

Page: 4

EQUIPMENT	PARENT	LIST INDIC	EQUIPMENT DESCRIPTION	BLDG.	ELEV	COL/ROW	FT WALL	DEG	SORT
16093		IS	SWITCH-DIESEL GEN 1B RSRVE AIR START PS	TURB	590	A.2/6.5			R
16101BKR	BUS61	IS	CIRCUIT BREAKER-MAIN BREAKER BUS 1-61	TURB	586	C.1/8.4			S/R
16104BKR	BUS61	IS	CIRCUIT BREAKER-CONTAINMENT FAN COIL UNIT 1D	TURB	586	C.1/8.4			S/R
16105BKR	BUS61	IS	CIRCUIT BREAKER-CONTAINMENT FAN COIL UNIT 1C	TURB	586	C.1/8.4			S/R
16108BKR	BUS61	I	CIRCUIT BREAKER-CONTAINMENT INT SPRAY PUMP 1B	TURB	586	C.2/8.4			S/R
16109BKR	BUS61	IS	CIRCUIT BREAKER-COMPONENT COOLING PUMP 1C	TURB	586	C.2/8.4			S/R
16111BKR	BUS61	S	CIRCUIT BREAKER-BUS TIE 1-61 1-51	TURB	586	C.3/8.4			S/R
16163		S	SWITCH-LOW LUBE PRESSURE ALARM CHG PMP 1A	AUX	590	H.2/6.1			R
16201BKR	BUS62	IS	CIRCUIT BREAKER-MAIN BREAKER BUS 1-62	TURB	586	C.8/8.4			S/R
16204BKR	BUS62	IS	CIRCUIT BREAKER-MCC 1-62E (MCC 1-62H VIA MCC 1-62E)	TURB	586	C.8/8.4			S/R
16206BKR	BUS62	IS	CIRCUIT BREAKER-MCC62B/62C (MCC62B EXT VIA MCC 62C)	TURB	586	C.8/8.4			S/R
16208BKR	BUS62	IS	CIRCUIT BREAKER-MCC 1-62A (MCC 1-62D VIA MCC 1-62A)	TURB	586	C.7/8.4			S/R
16209BKR	BUS62	IS	CIRCUIT BREAKER-MCC 1-5262 BACKUP SUPPLY	TURB	586	C.7/8.4			S/R
16210BKR	BUS62	S	CIRCUIT BREAKER-PRESS HTR TRANSF 1-63 (MCC 1-62G)	TURB	586	C.7/8.4			S/R
16211BKR	BUS62	S	CIRCUIT BREAKER-BUS TIE 1-62 1-52	TURB	586	C.6/8.4			S/R
16212BKR	BUS62	IS	CIRCUIT BREAKER-MCC 1-62J	TURB	586	C.6/8.4			S/R
16221		I	SWITCH-AUX BLDG BSMT FAN COIL UNIT 1A TS	AUX	590	G.1/4.6			R
16222		I	SWITCH-AUX BLDG BSMT FAN COIL UNIT 1B TS	AUX	590	G.1/4.8			R
16226		S	SWITCH-AUX BLDG MEZZ FAN COIL UNIT 1B TS	AUX	610	H.8/8.6			R
16227		I	SWITCH-RESIDUAL HT PMP PIT FAN COIL UNIT 1A TS	AUX	570	J.2/6.5			R
16228		I	SWITCH-RESIDUAL HT PMP PIT FAN COIL UNIT 1B TS	AUX	570	J.9/6.5			R
16230		I	SWITCH-TURB BLDG FAN COIL UNIT 1A TS	TURB	588	C.1/8.9			
16231		I	SWITCH-TURB BLDG FAN COIL UNIT 1B TS	TURB	588	F.9/8.9			
16233		S	SWITCH-BATTERY RM FAN COIL UNIT 1A DISCH AIR TS	TURB	610	E.2/9.0			R
16390		I	SWITCH-AFW PMP 1A FAN COIL TS	TURB	589	E.9/8.4			R
16391		I	SWITCH-CC PMP 1B FAN COIL TS	AUX	617	K.8/9S.5			R
16392		S	SWITCH-CHARGING PMP 1C FAN COIL TS	AUX	597	HW.5/6N.0			R
16557		IS	SWITCH-AUX BLDG BSMT FAN COIL UNIT 1C TS	AUX	590	G.5/6.4			R
16558		IS	SWITCH-AUX BLDG BSMT FAN COIL UNIT 1D TS	AUX	590	G.5/6.2			R
167-021		I	SCREEN-TRAVELING WATER SCREEN 1A1	SH	586	5.7			S
167-022		I	SCREEN-TRAVELING WATER SCREEN 1A2	SH	586	5.3			S
167-023		I	SCREEN-TRAVELING WATER SCREEN 1B1	SH	586	4.7			S
167-024		I	SCREEN-TRAVELING WATER SCREEN 1B2	SH	586	4.3			S
1E-0220		IS	ELECT-EQUIPMENT-RR121 REACTOR PROTECTION TRAIN 'B' (1C165)	AUX	606	GW.3/8.1			S/R
1E-0221		IS	ELECT-EQUIPMENT-RR122 REACTOR PROTECTION TRAIN 'B' (1C164)	AUX	606	GW.4/8.1			S/R
1E-0222		IS	ELECT-EQUIPMENT-RR123 REACTOR PROTECTION TRAIN 'B' (1C163)	AUX	606	GW.5/8.1			S/R
1E-0223		IS	ELECT-EQUIPMENT-RR124 REACTOR PROTECTION TRAIN 'B' (1C162)	AUX	606	GW.6/8.1			S/R
1E-0224		IS	ELECT-EQUIPMENT-RR125 REACTOR PROTECTION TRAIN 'B' (1C161)	AUX	606	GW.6/8.1			S/R
1E-0229		IS	ELECT-EQUIPMENT-RR130 REACTOR PROTECTION TRAIN 'A' (1C151)	AUX	606	G.6/8.1			S/R
1E-0230		IS	ELECT-EQUIPMENT-RR131 REACTOR PROTECTION TRAIN 'A' (1C152)	AUX	606	G.5/8.1			S/R
1E-0231		IS	ELECT-EQUIPMENT-RR132 REACTOR PROTECTION TRAIN 'A' (1C153)	AUX	606	G.4/8.1			S/R
1E-0232		IS	ELECT-EQUIPMENT-RR133 REACTOR PROTECTION TRAIN 'A' (1C154)	AUX	606	G.3/8.1			S/R
1E-0233		IS	ELECT-EQUIPMENT-RR134 REACTOR PROTECTION TRAIN 'A' (1C155)	AUX	606	G.2/8.1			S/R
1E-0270		IS	ELECT-EQUIPMENT-RR171 SUB-DICTR. D.C. FUSE PANEL TRAIN A	AUX	606	G.5/7.6			S/R
1E-0272		IS	ELECT-EQUIPMENT-RR173 SUB-DISTR. A.C. FUSE PANEL NORMAL	AUX	606	G.5/7.6			S/R

2/15/93 REV #6

PRELIMINARY COPY

SSEL/PEEE MASTER LIST Page: 5

EQUIPMENT	PARENT	LIST INDIC	EQUIPMENT DESCRIPTION	BLDG.	ELEV	COL/ROW	FT WALL	DEG	SORT
1E-0273		S	ELECT-EQUIPMENT-RR174 SUB-DISTR. D.C. FUSE PANEL NORMAL	AUX	606	G.6/7.6			S/R
1E-0274		S	ELECT-EQUIPMENT-RR175 SUB-DISTR. A.C. FUSE PANEL TRAIN 'B'	AUX	606	G.3/7.6			S/R
1E-0275		IS	ELECT-EQUIPMENT-RR176 SUB-DISTR. D.C. FUSE PANEL TRAIN 'B'	AUX	606	G.4/7.6			S/R
1E-0400		S	CABINET-CR101 ELECL CONT CONSOLE A	AUX	626	GW.4/8.5			
1E-0401		S	CABINET-CR102 ELECT CONT CONSOLE A	AUX	626	GW.4/7.7			
1E-0402		S	CABINET-CR103 MECHANICAL CONSOLE B	AUX	626	GW.3/7.4			S
1E-0403		S	CABINET-CR104 MECH CONT CONSOLE C	AUX	626	G.9/7.3			
1E-0404		S	ELECT-EQUIP-CR105 ELEC VERT PNL A	AUX	626	GW.7/8.5			
1E-0405		S	ELECT-EQUIPMENT-CR106 MECH VERT PNL A	AUX	626	GW.5/7.7			
1E-0406		S	ELECT-EQUIP-CR107 MECH VERT PNL B	AUX	626	GW.5/7.4			
1E-0407		S	CABINET-CR108 N.I.S. RACK NO.4	AUX	626	GW.4/7.3			S/R
1E-0408		S	CABINET-CR109 N.I.S. RACK NO.3	AUX	626	GW.4/7.2			S/R
1E-0409		S	CABINET-CR110 N.I.S. RACK NO.2	AUX	626	GW.3/7.3			S/R
1E-0410		S	CABINET-CR111 N.I.S. RACK NO.1	AUX	626	GW.3/7.1			S/R
1E-0411		S	CABINET-CR112 IIS RACK NO 4	AUX	626	GW.2/7.0			
1E-0412		S	CABINET-CR113 IIS RACK NO 3	AUX	626	GW.1/7.0			
1E-0413		S	CABINET-CR114 IIS RACK NO 2	AUX	626	GW.0/7.0			
1E-0414		S	CABINET-CR115 IIS RACK NO 1	AUX	626	G.9/7.0			
1E-0415		S	CABINET-CR116 RMS RACK NO 2	AUX	626	G.8/7.0			
1E-0416		S	CABINET-CR117 RMS RACK NO 1	AUX	626	G.8/7.0			
1E-0417		S	CABINET-CR118 RMS RACK	AUX	626	G.7/7.0			
1E-0454		IS	ELECT-EQUIP-RD105 PWR CAB	AUX	626	GW.8/2.6			
1E-0455		IS	ELECT-EQUIPMENT-RD106 REACTOR TRIP BKRS.	AUX	626	GW.5/2.5			S/R
1E-0534		IS	CABINET-BRA113 118VAC DISTR. CAB.	TURB	606	E.4/8.1			S/R
1E-0535		IS	CABINET-BRB113 118VAC DISTR. CAB.	TURB	606	F.1/8.1			S/R
1E-0536		IS	CABINET-BRB114 118VAC DISTR. CAB.	TURB	606	F.2/8.1			S/R
1E-0537		IS	CABINET-BRA114 118VAC DISTR CAB	TURB	606	E.5/8.1			
1E-0575			ELECT-EQUIP-FR101 STEAM EXCLUSION LOGIC PANEL 1A	AUX	642	H.0/4.2			
1E-0576			ELECT-EQUIP-FR102 STEAM EXCLUSION LOGIC PANEL 1B	AUX	642	H.0/3.8			
21005		S	TRANSMITTER-SERVICE WATER HDR 1A P XMTR	SH	591	AE.1/7.2			R
21006		S	TRANSMITTER-SERVICE WATER HDR 1B P XMTR	TURB	591	AE.1/6.4			R
21024		S	INSTRUMENT-AFW PUMP 1B DISCHARGE PRESSURE (P-21024)	TURB	591	F.4/9.0			S
21038		S	TRANSMITTER-PRESS. XMITTER WIDE RANGE RCS LOOP A (PT-419)	CONT	610		14	300	R
21054		S	TRANSMITTER-PRESS. XMITTER P-21054 IA HDR PRESS. RX BLDG	CONT	631		12	043	R
21057		S	TRANSMITTER-PRESS. XMITTER P-21057 IA HDR PRESS.	TURB	591	D.1/8.1			R
21077		S	TRANSMITTER-PRESS. XMITTER WIDE RANGE RCS LOOP A (PT-420)	CONT	611		14	300	R
21079		IS	TRANSMITTER-PRZR PRESSURE XMTR 1C (PT-431)	CONT	609		23	113	R
21080		IS	TRANSMITTER-PRZR PRESSURE XMTR 1B (PT-430)	CONT	609		13	112	R
21081		IS	TRANSMITTER-PRZR PRESSURE XMTR 1A (PT-429)	CONT	609		17	98	R
21083		S	TRANSMITTER-PRESS. RELIEF TANK PRESSURE XMITTER PT-440	CONT	597		6	160	R
21084		I	TRANSMITTER-RESID HT REML PMP 1A DSCH P XMTR	AUX	591	J.5/6.7			R
21085		I	TRANSMITTER-RESID HT REML PMP 1B DSCH P XMTR	AUX	597	J.5/6.5			R
21090		S	TRANSMITTER-PRESS. XMITTER PT-922 (INJECTION LINE A)	AUX	590	H.4/5.8			R
21091		S	TRANSMITTER-PRESS. XMITTER PT-923 (INJECTION LINE B)	AUX	590	H.7/6.6			R
21094		S	TRANSMITTER-PRESSURE TRANSMITTER SGIA PT-468	AUX	623	L.8/55.9			R

2/15/93 REV #6

PRELIMINARY COPY

EQUIPMENT	PARENT	LIST INDIC	EQUIPMENT DESCRIPTION	BLDG.	ELEV	COL/ROW	FT WALL	DEG	SORT
21095		S	TRANSMITTER-PRESSURE TRANSMITTER SGIA PT-460	AUX	623	M.2/5S.1			R
21096		S	TRANSMITTER-PRESSURE TRANSMITTER SGIA PT-482	AUX	623	M.2/4.5			R
21097		S	TRANSMITTER-STM GEN 1B STM OUTL P XMTR PT-416	AUX	621	JJW./4.3			R
21098		S	TRANSMITTER-PRESSURE TRANSMITTER SGIB PT-479	AUX	621	JJW.1/4.1			R
21099		S	TRANSMITTER-PRESSURE TRANSMITTER SGIB PT-483	AUX	621	JJW.1/3.9			R
21100		I	TRANSMITTER-CNTMT PRESSURE NO 1A1 DIFF P XMTR	AUX	639	J.3/5.6			R
21101		I	TRANSMITTER-CNTMT PRESSURE NO 1A2 DIFF P XMTR	AUX	639	J.5/5.7			R
21102		I	TRANSMITTER-CNTMT PRESSURE NO 1A3 DIFF P XMTR	AUX	639	K.0/5.8			R
21117		I	TRANSMITTER-CNTMT PRESSURE NO 1B1 DIFF P XMTR	AUX	639	K.0/5.8			R
21118		I	TRANSMITTER-CNTMT PRESSURE NO 1B2 DIFF P XMTR	AUX	639	J.5/5.7			R
21119		I	TRANSMITTER-CNTMT PRESSURE NO 1B3 DIFF P XMTR	AUX	639	J.1/5.7			R
23010		S	XMITTER-AUX FW TO STM GEN 1A F XMTR	AUX	591	G.1/8.6			
23012		S	XMITTER-AUX FW TO STM GEN 1B F XMTR	AUX	591	G.6/9.5			
23015		S	TRANSMITTER-REAC CLNT PMP 1A SL WTR LO-RANGE F XMTR	CONT	631		13	252	S
23016		S	TRANSMITTER-REAC CLNT PMP 1A SL WTR HI-RANGE F XMTR	CONT	635		13	265	S
23017		S	TRANSMITTER-REAC CLNT PMP 1B SL WTR LO-RANGE F XMTR	CONT	630		16	025	S
23018		S	TRANSMITTER-REAC CLNT PMP 1B SL WTR HI-RANGE F XMTR	CONT	628		19	025	S
23022		S	TRANSMITTER-CHG PMP DSCH TO REGEN HT EXGR F XMTR	AUX	591	HW.0/6.0			S
23023		S	INSTRUMENT-AFW PUMP 1A DISCHARGE PRESSURE (P-21023)	AUX	588	A.9/3.0			S
23054		S	TRANSMITTER-SFTY INJ PUMP 1A DSCH F XMTR	AUX	590	H.4/5.8			S
23111		S	TRANSMITTER-RX COOLANT PUMP A NO.1 SEAL INJN FLOW XMTR	AUX	616	J.7/6.1			S
23112		S	TRANSMITTER-RX COOLANT PUMP B NO.1 SEAL INJN FLOW XMTR	AUX	616	J.7/6.1			S
24013		S	TRANSMITTER-STM GEN 1A LVL IND XMTR	CONT	611		7	265	R
24014		S	TRANSMITTER-STM GEN 1B LVL IND XMTR	CONT	611		18	135	R
24015		I	TRANSMITTER-VOL CONT TNK LVL XMTR	AUX	616	HW.3/6.2			R
24016		I	TRANSMITTER-VOL CONT TNK LVL XMTR	AUX	611	H.5/6.5			R
24023		IS	TRANSMITTER-BORIC ACID TANK 1A L XMTR (LT-106)	AUX	638	H.5/6.0			R
24024		IS	TRANSMITTER-BORIC ACID TANK 1A L XMTR (LT-172)	AUX	638	J.0/6.2			R
24025		IS	TRANSMITTER-BORIC ACID TANK 1A L XMTR (LT-190)	AUX	638	H.7/6.4			R
24026		IS	TRANSMITTER-BORIC ACID TANK 1B L XMTR (LT-102)	AUX	638	H.5/5.5			R
24027		IS	TRANSMITTER-BORIC ACID TANK 1B L XMTR (LT-171)	AUX	638	H.5/5.3			R
24028		IS	TRANSMITTER-BORIC ACID TANK 1B L XMTR (LT-189)	AUX	638	J.0/5.8			R
24030		S	TRANSMITTER-PRESSURIZER LEVEL TRANSMITTER 1C (LT-428)	CONT	611		29	123	R
24031		S	TRANSMITTER-PRESSURIZER LEVEL TRANSMITTER 1B (LT-427)	CONT	611		13	112	R
24032		S	TRANSMITTER-PRESSURIZER LEVEL TRANSMITTER 1A (LT-426)	CONT	611		17	098	R
24033		S	TRANSMITTER-PRESS. RELIEF TANK LEVEL XMITTER (LT-442)	CONT	598		13	173	R
24038		I	TRANSMITTER-BORIC ACID TANK 1A L XMTR (LT-196)	AUX	638	H.5/6.2			R
24039		I	TRANSMITTER-BORIC ACID TANK 1B L XMTR (LT-197)	AUX	638	H.5/5.1			R
24040		S	TRANSMITTER-RWST LEVEL TRANSMITTER LT-920	AUX	591	G.9/6.8			R
24041		S	TRANSMITTER-COMPONENT COOLING SURGE TANK L XMTR	AUX	658	G.3/5.5			R
24042		IS	TRANSMITTER-STM GEN 1A L XMTR (LT-461)	CONT	611		5	280	S/R
24043		IS	TRANSMITTER-STM GEN 1A L XMTR (LT-462)	CONT	609		5	280	R
24044		IS	TRANSMITTER-STM GEN 1A L XMTR (LT-463)	CONT	609		7	282	R
24046		IS	TRANSMITTER-STM GEN 1A L XMTR (LT-471)	CONT	608		24	108	S/R
24047		IS	TRANSMITTER-STM GEN 1B L XMTR (LT-472)	CONT	608		17	098	R

PRELIMINARY COPY

SSEL/IPEEE MASTER LIST Page: 7

EQUIPMENT	PARENT	LIST INDIC	EQUIPMENT DESCRIPTION	BLDG.	ELEV	COL/ROW	FT WALL	DEG	SORT
24048		IS	TRANSMITTER-STM GEN 1B L XMTR (LT-473)	CONT	609		16	078	R
24062		S	TRANSMITTER-RWST LEVEL TRANSMITTER LT-921	CONT	590	G.9/5.8			R
26018		S	CONTROLLER-COMP CLG PUMPS 1A/1B DSCH PC	AUX	611	K.0/8.4			S
26318		S	CONTROLLER-BRC ACD TNK 1A HEATER TC	AUX	638	HW.2/6.7			R
26319		S	CONTROLLER-BRC ACD TNK 1A HEATER TC	AUX	638	HW.2/6.4			R
26320		S	CONTROLLER-BRC ACD TNK 1B HEATER TC	AUX	638	J.1/5.8			R
26321		S	CONTROLLER-BRC ACD TNK 1B HEATER TC	AUX	638	J.1/6.2			S
26620		S	SWITCH-REAC CLNT PMP 1A CLG WTR RTRN FC	AUX	590	HW.2/5.3			R
27034		S	ELEMENT-REAC CLNT PMP 1A COMP WTR DSCH F ORIFICE	CONT	612		20	245	S
27036		S	ELEMENT-REAC CLNT PMP 1B COMP WTR DSCH F ORIFICE	CONT	611		23	042	S
28037		S	SOURCE RANGE NUCLEAR INSTRUMENTATION CHANNEL 2	CONT	592		46	309	R
28043		S	SOURCE RANGE NUCLEAR INSTRUMENTATION CHANNEL 1	CONT	592		46	309	R
28103		S	SOURCE RANGE NUCLEAR INSTRUMENTATION CHANNEL 3	CONT	592		46	309	R
31012\MU3A		I	VALVE-CONTROL-CONDENSATE M-U CONT STA AT CDSR 1B	TURB	605	D.2/3.6			S/R
31015\MS1A		IS	VALVE-CHECK-MS ISOLATION VALVE ASSEMBLY-GEN 1A	AUX	622	M.5/5.1			R
31016\MS1B		IS	VALVE-CHECK-MS ISOLATION VALVE ASSEMBLY-GEN 1B	AUX	620	HE.4/4.2			S
31038\SW3A		S	VALVE-CONTROL-SERVICE WATER HEADER ISOLATION (SW3A)	SH	580	5.0			S
31040\SW3B		S	VALVE-CONTROL-SERVICE WATER HEADER ISOLATION (SW3B)	SH	583	4.9			S
31084\SW4A		S	VALVE-CONTROL-SERVICE WATER TO TURBINE BUILDING (SW4A)	TURB	593	A.2/7.2			S
31085\SW4B		S	VALVE-CONTROL-SERVICE WATER TO TURBINE BUILDING (SW4B)	ADM	596	AE.4/6.7			S
31088\SW301A		IS	VALVE-CONTROL-SW FROM DIESEL GEN. OIL COOLER (SW301A)	ADM	593	AE.4/7.6			S
31089\SW301B		IS	VALVE-CONTROL-SW FROM DIESEL GEN. OIL COOLER (SW301B)	ADM	593	AE.4/6.2			S
31103\CVC7		S	VALVE-CONTROL-CHRG LINE TO REGEN HX (CVC-7)	AUX	588	HW.0/6.5			S/R
31104		S	LD-3 CVC LETDOWN ISO (LCV-428)	CONT	599		28	348	S
31108		S	LD-2 CVC LETDOWN ISO (LCV-427)	CONT	599		29	348	S
31109\PR2B		IS	VALVE-CONTROL-PRESS. TO PRESS. RELIEF TANK PORV PR-2B	CONT	659		20	119	S
31110\PR2A		IS	VALVE-CONTROL-PRESS. TO PRESS. RELIEF TANK PORV PR-2A	CONT	662		25	125	S
31111\PS1B		I	VALVE-CONTROL-COLD LEG LOOP B TO PRESSURIZER	CONT	627		36	030	S/R
31112\PS1A		I	VALVE-CONTROL-COLD LEG LOOP A TO PRESSURIZER	CONT	617		31	237	S/R
31114\RHR8A		I	VALVE-CONTROL-RHR8A/CV31114 RHR HEAT EXGR A FLOW CV	AUX	609	J.6/7.1			S/R
31115\RHR8B		I	VALVE-CONTROL-RHR8B/CV31115 RHR HEAT EXGR B FLOW CV	AUX	609	J.6/6.6			S/R
31127\CC610A		S	ACTUATOR-CC610A/CV31127 RXCP A THERMAL BARR CC RETURN	CONT	611		21	236	S
31128\CC610B		S	ACTUATOR-CC610B/CV31128 RXCP B THERMAL BARR CC RETURN	CONT	609		22	032	S
31134\RC507		I	VALVE-CONTROL-REAC COOLANT TO DH NO.1	AUX	611	H.4/4.0			S/R
31135\RC508		I	VALVE-CONTROL-REAC COOLANT TO DH NO.1	AUX	612	H.2/4.1			S/R
31136\MD(R)134		I	VALVE-CONTROL-CONTAINMENT SUMP TO DH NO.1	AUX	611	H.4/4.6			S/R
31137\MD(R)135		I	VALVE-CONTROL-CONTAINMENT SUMP TO DH NO.1	AUX	608	H.4/4.4			S/R
31157\FW10A		I	VALVE-CONTROL-CONTROL STA BY-PASS TO STEAM GENERATOR 1A	AUX	611	L.6/5N.9			S/R
31158\FW10B		I	VALVE-CONTROL-CONTROL STA BY-PASS TO STEAM GENERATOR 1B	AUX	628	GW.5/4.5			S/R
31170\SD3A		IS	VALVE-CONTROL-MAIN STM CONTROLLED RELIEF VALVE STM HDR 1A (SD3A)	AUX	626	M.6/6.9			S
31174\SD3B		IS	VALVE-CONTROL-MAIN STM CONTROLLED RELIEF VALVE STM HDR 1B (SD3B)	AUX	626	HE.6/3.9			S
31188\SA121		I	ACTUATOR-AIR DRYER/FILTER BYPASS CV	TURB	597	C.4/8.9			S
31229\CVC11		IS	VALVE-CONTROL-REGENERATIVE HEAT EXCHANGER CHARGING LINE (CVC-11)	CONT	598		21	305	S
31230\CVC15		IS	VALVE-CONTROL-REGENERATIVE HEAT EXCHANGER AUX. SPRAY (CVC-15)	CONT	598		19	313	S
31236\LD300		S	VALVE-CONTROL-EXCESS LETDOWN HEAT EXCHANGER 1A&1B (LD-300)	CONT	597		23	318	S

2/15/93 REV #6

PRELIMINARY COPY

EQUIPMENT	PARENT	LIST INDIC	EQUIPMENT DESCRIPTION	BLDG.	ELEV	COL/ROW	FT WALL	DEG	SORT
31237\CVC207A		S	VALVE-CONTROL-REACTOR COOLANT PMP 1A SEAL WATER OUTLET (CVC-207A)	CONT	631		10	252	S
31238\CVC207B		S	VALVE-CONTROL-REACTOR COOLANT PMP 1B SEAL WATER OUTLET (CVC-207B)	CONT	631		16	047	S
31247\SI101A		IS	VALVE-CONTROL-SI101A/31247 SI PUMP MAKEUP TO ACCUM A	CONT	600		10	235	S/R
31248\SI101B		IS	VALVE-CONTROL-SI101B/CV31248 SI PUMP MAKEUP TO ACCUM B	CONT	611		23	009	S/R
31272\ICS202		I	VALVE-CONTROL-ICS202/CV31272 ICS RECIRCULATION TO RWST	AUX	598	GW.9/4.4			S/R
31273\ICS201		I	VALVE-CONTROL-ICS201/CV31273 ICS RECIRCULATION TO RWST	AUX	598	GW.9/4.4			S/R
31305\MU3B		I	VALVE-CONTROL-CONDENSATE EMERGENCY MAKE-UP CONTROL STATION	TURB	606	D.2/3.8			S/R
31307\SA400		I	VALVE-CONTROL-STATION AIR HDR 1B ISOL	TURB	600	D.5/8.5			S
31308\SA200		I	VALVE-CONTROL-STATION AIR HDR 1A ISOL	TURB	600	A.1/8.5			S
31309\IA101		IS	VALVE-CONTROL-INSTRUMENT AIR TO REACT BLDG CONTROL VALVE (IA-101)	AUX	637	HW.3/5.3			S/R
31315\AFW2A		IS	VALVE-CONTROL-AUX FEEDWATER PUMP 1A FLOW CONTROL VALVE	TURB	594	E.8/8.8			S
31316\AFW2B		IS	VALVE-CONTROL-AUX FEEDWATER PUMP 1B FLOW CONTROL VALVE	TURB	590	F.6/8.5			S
31349		IS	VALVE-CONTROL-COMPRESSOR 1A AIR CYLINDER (SW-420A)	TURB	592	7.9/A.5			S
31350		IS	VALVE-CONTROL-COMPRESSOR 1B AIR CYLINDER THERMO VALVE (SW-420B)	TURB	592	D.2/8.9			S
31359		IS	VALVE-CONTROL-COMPRESSOR 1C AIR CYLINDER THERMO VALVE (SW-420C)	TURB	589	8.0/8.1			S
31388\LOCA3B		I	VALVE-CONTROL-LOCA3B/CV31388 POST LOCA H2 VENT TO ANNUL B CV	ANN	619			268	S
31389\LOCA10B		I	VALVE-CONTROL-LOCA10B/CV31389 H2 SMPLE TO GAS ANZR ISO VLV B	ANN	619			245	S
31648		I	INSTRUMENT-STATION AIR CROSSOVER HEADER PRESSURE CV (SA-60)	TURB	599	C.9/8.4			S/R
31688		S	VALVE-CONTROL-SEAL WTR INJECTION BYPASS BLOCK CV (CVC-200)	AUX	595	HW.3/6.5			S/R
31689\CVC203B		S	ACTUATOR-SEAL WTR INJECTION BYPASS DIVERT CV	AUX	595	HW.3/6.5			S/R
31704\SW903A-1		S	VALVE-CONTROL-HEADER 1A SHROUD COOLING COIL A/B BYPASS (SW903A-1)	CONT	612		06	015	S
31705\SW901B-1		S	VALVE-CONTROL-HEADER 1B SHROUD COOLING COIL A/B BYPASS (SW903B-1)	CONT	612		05	025	S
31706\SW903C-1		S	VALVE-CONTROL-HEADER 1C SHROUD COOLING COIL C/D BYPASS (SW903C)	CONT	598		10	160	S
31707\SW903D-1		S	VALVE-CONTROL-HEADER 1D SHROUD COOLING COIL C/D BYPASS (SW903D-1)	CONT	598		09	160	S
31725\LOCA100B		I	VALVE-CONTROL-LOCA100B/CV31725 POST LOCA H2 TO RECOMBINER B	ANN	619			268	S/R
31727\LOCA201B		I	VALVE-CONTROL-LOCA201B/CV31727 POST LOCA HYD RECMBR B TO CNT	CONT	612		3	282	S/R
31746\SW1006C		I	ACTUATOR-SW1006C/CV31746 AUX BLDG BSMT FN CL UNIT C INL	AUX	588	G.4/6.6			S/R
31747\SW1006D		I	ACTUATOR-SW1006D/CV31747 AUX BLDG BSMT FN CL UNIT 1D INL	AUX	588	G.2/6.1			S/R
32007\MS2A		S	ACTUATOR-MS2A/MV32007 S/G A MSIV BYPASS VALVE	AUX	624	M.7/5S.8			S
32008\MS2B		S	ACTUATOR-MS2B/MV32008 S/G B MSIV BYPASS VALVE	AUX	624	H.1/4.3			S/R
32009\SW1300A		IS	VALVE-MTR OPER-COMPONENT COOLING HEAT EXCHANGER 1A OUTLET	AUX	610	J.7/8.8			S/R
32010\SW1300B		IS	VALVE-MTR OPER-COMPONENT COOLING HEAT EXCHANGER 1B OUTLET	AUX	611	J.7/8.4			S/R
32011\SW10A		IS	VALVE-MTR OPER-AUX BLDG SW HEADER A ISOLATION (SW10A)	ADM	588	AE.6/7.1			S/R
32012\SW10B		IS	VALVE-MTR OPER-AUX BLDG SW HEADER B ISOLATION (SW10B)	ADM	596	AE.3/6.9			S/R
32027\AFW10A		IS	ACTUATOR-AFW10A/MV32027 AFW TRAIN A X-OVER VALVE	TURB	595	E.9/8.9			S/R
32028\AFW10B		IS	ACTUATOR-AFW10B/MV32028 AFW TRAIN B X-OVER VALVE	TURB	596	F.2/8.4			S/R
32029\SW601A		IS	VALVE-MTR OPER-AUX FEEDWATER PUMP 1A (SW601A)	TURB	590	E.5/8.6			S/R
32030\SW601B		IS	VALVE-MTR OPER-AUX FEEDWATER PUMP 1B (SW601B)	TURB	590	F.3/8.6			S/R
32031\SW502		I	VALVE-MTR OPER-TURBINE DRIVEN AUX. FEEDWATER PUMP	TURB	590	D1.4/8.7			S/R
32038\MS100A		I	VALVE-MTR OPER-MS100A/MV32038 S/G A STM SPLY TO T/D AFW PUMP AUX	AUX	624	M.1/5S.5			S/R
32039\MS100B		I	VALVE-MTR OPER-MS100B/MV32039 S/G STM SUPPLY TO T/D AFW PMP	AUX	622	H.4/4.1			S/R
32040\MS102		I	VALVE-MTR OPER-MS102/MV32040 T/D AFW PUMP MAIN SIM ISOL	TURB	587	D.8/8.9			S/R
32056\CVC301		IS	VALVE-MTR OPER-R.W. INLET AT CHARGING PUMP (CVC-301)	AUX	590	HW.0/6.1			S/R
32057\CVC1		IS	VALVE-MTR OPER-VOLUME CONTROL TANK - OUTLET (CVC-1)	AUX	607	H.8/6.2			S/R
32058\SW903C		IS	VALVE-CONTROL-CNTMT CLG SW RETURN HEADER 1C MV (SW903C)	AUX	602	H.1/4.1			S/R

PRELIMINARY COPY

EQUIPMENT	PARENT	LIST INDIC	EQUIPMENT DESCRIPTION	BLDG.	ELEV	COL/ROW	FT WALL	DEG	SORT
32059\SW903D		I S	VALVE-CONTROL-CNTMT CLG SW RETURN HEADER 1D MV (SW903D)	AUX	602	H.1/4.2			S/R
32060\SW903A		I S	VALVE-CONTROL-CNTMT CLG SW RETURN HEADER 1A MV (SW903A)	AUX	607	J.4/6.0			S/R
32061\SW903B		I S	VALVE-CONTROL-CNTMT CLG SW RETURN HEADER 1B MV (SW903B)	AUX	607	J.8/6.0			S/R
32066\ICS5A		I	VALVE-MTR OPER-ICS5A/MV32066 CNTMT SPRAY PMP A DISCH ISOL	AUX	592	GW.1/5.7			S/R
32067\ICS6A		I	VALVE-MTR OPER-ICS6A/MV32067 CNTMT SPRAY PMP A DISCH ISOL	AUX	592	G.9/5.7			S/R
32068\ICS5B		I	VALVE-MTR OPER-ICS5B/MV32068 CNTMT SPRAY PMP B DISCH ISOL	AUX	592	GW.1/5.3			S/R
32069\ICS6B		I	VALVE-MTR OPER-ICS6B/MV32069 CNTMT SPRAY PMP B DISCH ISOL	AUX	590	G.9/5.3			S/R
32077\BT2A		I S	VALVE-MTR OPER-BT2A/MV32077 S/G A BLOWDOWN ISOL VALVE A1	CONT	593		43	296	S
32078\BT3A		I S	VALVE-MTR OPER-BT3A/MV32078 S/G A BLOWDOWN ISOL VALVE A2	AUX	618	JJ.8/2.4			S
32079\BT2B		I S	VALVE-MTR OPER-BT2B/MV32079 S/G B BLOWDOWN ISOL VALVE B1	CONT	593		34	113	S/R
32080\BT3B		I S	VALVE-MTR OPER-BT3B/MV32080 S/G B BLOWDOWN ISOL VALVE B2	AUX	618	JJ.7/2.5			S/R
32084\CC601A		S	VALVE-MTR OPER-CC601A/MV32084 COMP COOLING TO RXCP A	AUX	613	J.8/6.0			S/R
32085\CC601B		S	VALVE-MTR OPER-CC601B/MV32085 COMP COOLING TO RXCP B	AUX	613	J.4/5.9			S/R
32086\CC612A		S	VALVE-MTR OPER-CC612A/MV32086 RXCP A COMP CLG RETURN ISOL	AUX	613	J.7/6.0			S/R
32087\CC612B		S	VALVE-MTR OPER-CC612B/MV32087 RXCP B CC RETURN ISOL	AUX	613	J.5/5.9			S/R
32088\CC600		S	VALVE-MTR OPER-CC600/MV32088 CC TO RXCP AND EXCHS LD HX	AUX	625	J.1/6.5			S/R
32089\PR1A		I S	VALVE-MTR OPER-PR1A/MV32089 PRESSURIZER PORV BLOCK VALVE	CONT	660		25	125	S
32090\PR1B		I S	VALVE-MTR OPER-PR1B/MV32090 PRESSURIZER PORV BLOCK VALVE	CONT	660		20	120	S
32100\SI302A		I	VALVE-SI302A/MV32100 RHR PUMP A INJECTION TO REACT VESSEL	CONT	607		14	025	S/R
32101\SI302B		I	VALVE-MTR OPER-SI302B/MV32101 RHR PUMP B INJN TO REAC VESSEL	CONT	594		15	077	S/R
32102\SI350A		I S	VALVE-MTR OPER-SI350A/MV32102 CNTMT SUMP B SPLY TO RHR PMP A	AUX	586	J.6/6.0			S/R
32103\SI350B		I S	VALVE-MTR OPER-SI350B/MV32103 CNTMT SUMP B SPLY TO RHR PMP B	AUX	586	J.6/6.0			S/R
32104\SI2A		I S	VALVE-MTR OPER-SI2A/MV32104 BORIC ACID TANK OUTLET ISOLATION	AUX	589	H.7/6.0			S/R
32105\SI2B		I S	VALVE-MTR OPER-SI2B/MV32105 BORIC ACID TANK OUTLET ISOLATION	AUX	589	H.9/6.0			S/R
32107\SI5A		I S	VALVE-MTR OPER-SI5A/MV32107 SI PUMP A SUCTION ISOLATION	AUX	585	H.6/5.5			S/R
32108\SI5B		I S	VALVE-MTR OPER-SI5B/MV32108 SI PUMP B SUCTION ISOLATION	AUX	585	HW.4/5.5			S/R
32109\SI4A		I S	VALVE-MTR OPER-SI4A/MV32109 RWST SUPPLY SI PUMPS	AUX	588	HW.7/5.9			S/R
32110\SI4B		I S	VALVE-MTR OPER-SI4B/MV32110 RWST SUPPLY TO SI PUMPS	AUX	588	HW.9/5.9			S/R
32111\SI300A		I	VALVE-MTR OPER-SI300A/MV32111 RWST SUPPLY TO RHR PUMP A	AUX	589	J.3/6.0			S/R
32112\SI300B		I	VALVE-MTR OPER-SI300B/MV32112 RWST SUPPLY TO RHR PUMP B	AUX	589	J.4/6.0			S/R
32113\SI351A		I S	VALVE-MTR OPER-SI351A/MV32113 CNTMT SUMP B SPLY TO RHR PMP A	CONT	586	J.6/6.0			S/R
32114\SI351B		I S	VALVE-SI351B/MV32114 CNTMT SUMP B SUPPLY TO RHR PUMP B	AUX	591	J.7/6.0			S/R
32115\CVC212		I S	VALVE-MTR OPER-PEN. NO. 14 N EL. 616'-11 15/16 INCH (CVC-212)	AUX	616	J.6/6.0			S/R
32116\RHR1A		I S	VALVE-MTR OPER-RHR1A/MV32116 RCS LOOP A SUPPLY TO RHR PUMPS	CONT	593		22	294	S
32117\RHR2A		I S	VALVE-MTR OPER-RHR2A/MV32117 RCS LOOP A SUPPLY TO RHR PUMPS	CONT	594		24	003	S
32118\RHR11		I	VALVE-MTR OPER-RHR11/MV32118 RHR DISCHARGE TO RCS LOOP B	CONT	608		13	035	S/R
32119\CC400A		I	VALVE-MTR OPER-CC400A/MV32119 COMP COOLING TO RHR HT EXCH A	AUX	625	J.5/7.0			S/R
32120\CC400B		I	VALVE-MTR OPER-CC400B/MV32120 COMP COOLING TO RHR HT EXCH B	AUX	625	J.5/6.7			S/R
32121\CC6A		S	VALVE-MTR OPER-CC6A/MV 32121 COMP COOLING HT EXCH A OUTLET	AUX	613	J.6/8.8			S/R
32122\CC6B		S	VALVE-MTR OPER-CC6B/MV 32122 COMP COOLING HT EXCH B OUTLET	AUX	613	J.6/8.6			S/R
32124\CVC211		I S	VALVE-MTR OPER-CVC211/MV32124 RXCP SEAL WTR RETURN ISOLATION	CONT	614		1	003	R
32125\RHR400A		I	VALVE-MTR OPER-RHR400A/MV32125 RHR PMP A SUPPLY TO ICS PMP A	AUX	590	GW.1/5.8			S/R
32126\RHR400B		I	VALVE-MTR OPER-RHR400B/MV32126 RHR PMP B SUPPLY TO ICS PMP B	AUX	590	GW.1/5.2			S/R
32127\CVC440		I	VALVE-MTR OPER-BORIC ACID FILTER (STA. 1)	AUX	589	GW.8/5.7			S/R
32130\SI209		I S	VALVE-MTR OPER-SI209/MV32130 SI RECIRCULATION TO RWST	AUX	589	H.8/5.3			R

PRELIMINARY COPY

SSEL/PEEE MASTER LIST

Page: 10

EQUIPMENT	PARENT	LIST INDIC	EQUIPMENT DESCRIPTION	BLDG.	ELEV	COL/ROW	FT WALL	DEG	SORT
32131\SI208		I S	VALVE-MTR OPER-SI208/MV32131 SI RECIRCULATION TO RWST	AUX	589	H.7/5.4			R
32132\RHR1B		I S	VALVE-MTR OPER-RHR1B/MV32132 RCS LOOP B SUPPLY TO RHR PUMPS	CONT	594		32	096	S
32133\RHR2B		I S	VALVE-MTR OPER-RHR2B/MV32133 RCS LOOP B SUPPLY TO RHR PUMPS	CONT	594		25	009	S
32134\RHR300A		I	VALVE-MTR OPER-RHR300A/MV32134 RHR PMP A SUPPLY TO SI PMP A	AUX	597	H.8/6.0			S/R
32135\RHR300B		I	VALVE-MTR OPER-RHR300B/MV32135 RHR PMP B SUPPLY TO SI PMP B	AUX	597	H.4/6.0			S/R
32148\SA7003B		I	VALVE-CONTROL-SA7003B/MV32148 HYDROGEN DILUTION TO CONTAINMN	ANN	621			280	S/R
32406\ICS2A		I	VALVE-MTR OPER-ICS2A/MV32406 CNTMT SPRAY PMP A SUCT FRM RWST	AUX	588	GW.0/5.6			S/R
32407\ICS2B		I	VALVE-MTR OPER-ICS2B/MV32407 CNTMT SPRAY PMP B SUCT FRM RWST	AUX	588	GW.0/5.4			S/R
33014\CC610A		S	ACTUATOR-CC610A/CV31127 RXCP A THERMAL BARRIER CC RETURN	CONT	612		13	236	R
33015\CC610B		S	ACTUATOR-CC610B/CV31128 RXCP B THERMAL BARRIER CC RETURN	CONT	612		22	032	R
33022\SW402A		I S	ACTUATOR-SW TO AIR COMPRESSOR 1A SV	TURB	589	A.3/7.4			S/R
33023\SW402B		I S	ACTUATOR-SW TO AIR COMPRESSOR 1B SV	TURB	589	C.7/8.8			S/R
33025\SD3A		I S	INSTRUMENT-MN STM HDR 1A CONTROLLED RELIEF SV	AUX	626	M.2/4.5			R
33026\SD3B		I S	INSTRUMENT-MN STM HDR 1B CONTROLLED RELIEF SV	AUX	648	HE.0/3.9			R
33033\SW301A		I S	ACTUATOR-DIESEL GEN 1A OIL CLR WTR OUTL SV (SV TO SW301A)	ADM	593	AE.3/7.6			R
33034\SW301B		I S	ACTUATOR-DIESEL GEN 1B OIL CLR WTR OUTL SV (SV TO SW301B)	ADM	593	AE.4/6.2			R
33035		S	INSTRUMENT-CONTAINMENT FAN COIL 1D SRVC WTR FLOW SV	AUX	602	H.1/4.3			S/R
33036		S	INSTRUMENT-CONTAINMENT FAN COIL 1B SRVC WTR FLOW SV	AUX	607	J.4/6.0			S/R
33039\CVC15		I S	ACTUATOR-CHARGING LINE AUX SPRAY TO PRZR STOP (SV FOR CVC 15)	CONT	598		20	312	S/R
33040\SW3A		S	ACTUATOR-SW PUMP HDR ISOL SV 1A	SH	569	5.0			R
33041\SW3B		S	ACTUATOR-SW PUMP HDR ISOL SV 1B	SH	590	4.8			R
33043\SW4A		S	ACTUATOR-SW TURB BLDG HDR 1A SV (SV TO SW4A)	TURB	593	A.0/7.2			R
33044\SW4B		S	ACTUATOR-SW TURB BLDG HDR 1B SV (SV TO SW4B)	ADM	596	AE.4/6.7			R
33084\LD2		S	ACTUATOR-REAC CLNT COLD LEG LP B LTDN SV 1A (LCV-427)	CONT	592		37	356	S/R
33085\LD3		S	ACTUATOR-REAC CLNT COLD LEG LP B LTDN SV 1B (LCV-428)	CONT	596		29	350	S
33086\ICS202		I	ACTUATOR-ICS202/CV31272 ICS RECIRCULATION TO RWST	AUX	598	H.3/4.4			R
33087\ICS201		I	ACTUATOR-ICS201/CV31273 ICS RECIRCULATION TO RWST	AUX	598	H.3/4.5			R
33113\PR2B		I S	ACTUATOR-PRZR PWR RLF PRESS SV1B	CONT	659		12	105	S/R
33114\PR2A		I S	ACTUATOR-PRZR PWR RLF PRESS SV1A	CONT	656		12	105	S/R
33120\RC507		I	ACTUATOR-REAC CLNT DRN PMPS DSCH HDR SV 1A	AUX	611	H.2/4.4			R
33143\RC508		I	ACTUATOR-REAC CLNT DRN PMPS DSCH HDR SV 1B	AUX	611	H.4/4.6			R
33145\MD(R)134		I	ACTUATOR-CNTMT SUMP PMPS DRAIN HEADER ISOL SV 1A	AUX	608	H.5/4.4			R
33146\MD(R)135		I	ACTUATOR-CNTMT SUMP PMPS DRAIN HEADER ISOL SV 1B	AUX	608	H.4/4.4			R
33172\LD300		S	ACTUATOR-EXCESS LETDOWN HX INLET SV (SV FOR LD-300)	CONT	599		24	323	S/R
33177\MS1A		I S	ACTUATOR-MN STM HDR 1A ISOL VLV AIR RELEASE SV 1A7	AUX	622	M.5/5.1			R
33178\MS1B		I S	ACTUATOR-MN STM HDR 1B ISOL VLV AIR RELEASE SV 1B7	AUX	620	H.0/4.2			R
33181\MS1A		S	ACTUATOR-MN STM HDR 1A ISOL VLV AIR SPLY SV 1A1	AUX	622	M.5/5.1			R
33182\MS1B		S	ACTUATOR-MN STM HDR 1B ISOL VLV AIR SPLY SV 1B1	AUX	620	H.0/4.2			R
33183\MS1A		S	ACTUATOR-MN STM HDR 1A ISOL VLV AIR SPLY SV 1A2	AUX	622	M.5/5.1			R
33184\MS1B		S	ACTUATOR-MN STM HDR 1B ISOL VLV AIR SPLY SV 1B2	AUX	620	H.0/4.2			R
33185\MS1A		I S	ACTUATOR-MN STM HDR 1A ISOL VLV AIR RELEASE SV 1A6	AUX	622	M.5/5.1			R
33186\MS1B		I S	ACTUATOR-MN STM HDR 1B ISOL VLV AIR RELEASE SV 1B6	AUX	620	H.0/4.2			R
33187\MU3A		I	INSTRUMENT-COND MAKEUP/DUMP SV	TURB	608	B.1/2.7			R
33188\MU3B		I	ACTUATOR-CONDENSATE EMERGENCY MAKE-UP SV	TURB	605	D.2/3.8			R
33194\CVC207A		S	ACTUATOR-REAC CLNT PMP 1A SEAL WATER ISOL SV (SV TO CVC-207A)	CONT	629		12	252	R

2/15/93 REV #6

PRELIMINARY

COPY

SSEL/IPEEE MASTER LIST

Page: 11

EQUIPMENT	PARENT	LIST INDIC	EQUIPMENT DESCRIPTION	BLDG.	ELEV	COL/ROW	FT WALL	DEG	SORT
33195\CVC207B		S	ACTUATOR-REAC CLNT PMP 1B SEAL WATER ISOL SV (SV TO CVC-207B)	CONT	629		17	055	R
33206		IS	ACTUATOR-SI101A/CV31247 SI PUMP MAKEUP TO ACCUM A	CONT	600		10	235	S/R
33207		IS	ACTUATOR-SI101B/CV31248 SI PUMP MAKEUP TO AACUM B	CONT	608		25	010	S/R
33208\SD11A1		I	INSTRUMENT-MAIN STM HDR 1A DUMP TO CDSR CV 1A SV1	TURB	608	E.2/5.6			R
33209\SD11A1		I	INSTRUMENT-MAIN STM HDR 1A DUMP TO CDSR CV 1A SV2	TURB	608	E.2/5.6			R
33210\SD11A1		I	INSTRUMENT-MAIN STM HDR 1A DUMP TO CDSR CV 1A SV3	TURB	608	E.2/5.6			R
33214\SD11B1		I	INSTRUMENT-MAIN STM HDR 1B DUMP TO CDSR CV 1D SV1	TURB	608	E.2/4.4			R
33215\SD11B1		I	INSTRUMENT-MAIN STM HDR 1B DUMP TO CDSR CV 1D SV2	TURB	608	E.2/4.4			R
33216\SD11B1		I	INSTRUMENT-MAIN STM HDR 1B DUMP TO CDSR CV 1D SV3	TURB	608	E.2/4.4			R
33248\IA101		I	ACTUATOR-INSTR AIR TO CNTMT ISOL SV	AUX	637	HW.3/5.3			S/R
33273\CVC11		IS	ACTUATOR-CHARGING LINE TO COLD LEG LOOP B STOP SV (SV TO CVC-11)	CONT	598		21	305	S/R
33287		IS	ACTUATOR-TURB BLDG FAN COIL UNIT 1A CLG WTR SV (SW710A)	TURB	587	C.2/8.7			S/R
33288		IS	ACTUATOR-TURB BLDG FAN COIL UNIT 1B CLG WTR SV (SW710B)	TURB	587	F.8/8.7			S/R
33302		IS	ACTUATOR-SW802B/SV33302 AUX BLDG BSMT FAN CLG UNIT B INLET	AUX	588	G.1/4.5			S/R
33303		I	ACTUATOR-SW1211A/SV33303 RHR PUMP PIT FAN COIL UNIT A INLET	AUX	570	J.3/6.6			R
33304		I	ACTUATOR-SW1211B/SV33304 RHR PUMP PIT FAN COIL UNIT B INLET	AUX	570	J.9/6.6			R
33307		S	ACTUATOR-SW1221A/SV33307 AUX BLDG MEZZ FAN COIL UNIT A INLET	AUX	607	H.8/8S.8			S/R
33308		S	ACTUATOR-SW1221B/SV33308 AUX BLDG MEZZ FAN COIL UNIT B INLET	AUX	607	H.8/8S.5			S/R
33313		IS	ACTUATOR-SW802A/SV33313 AUX BLDG BSMT FAN CLG UNIT A INLET	AUX	588	G.1/4.9			S/R
33323\AFW2A		IS	ACTUATOR-AFW PMP 1A DISCH CV SV	TURB	594	E.8/8.8			R
33346\SW403C		IS	INSTRUMENT-SRVC WTR TO AIR COMP 1C SV (SW403C)	TURB	589	B.0/8.1			S/R
3336701		IS	ACTUATOR-D/G RM 1A INLET DMPR SV1 A1 (SV TO TAV 60A)	TURB	601	AE.6/7.3			R
3336702		IS	ACTUATOR-D/G RM 1A INLET DMPR SV1 A2 (SV TO TAV 61A)	TURB	601	AE.6/7.3			R
3336801		IS	ACTUATOR-D/G RM 1B INLET AND RECIRC DMPR SV 1B1	ADM	590	AE.0/5.9			R
3336802		IS	ACTUATOR-D/G RM 1B INLET AND RECIRC DMPR SV 1B2	ADM	590	AE.0/5.9			R
3336901		IS	ACTUATOR-D/G RM 1A OUTLET DMPR SV 1A1	ADM	591	AE.3/7.1			S/R
3336902		IS	ACTUATOR-D/G RM 1A OUTLET DMPR SV 1A1	ADM	591	AE.3/7.1			S/R
3337001		IS	ACTUATOR-D/G RM 1B OUTLET DAMPER SB 1B1	ADM	596	AE.4/5.0			
3337002		IS	ACTUATOR-D/G RM 1B OUTLET DAMPER SV 1B2	ADM	596	AE.4/5.0			
33371		S	ACTUATOR-BATTERY ROOM FAN COIL UNIT 1A SV (SW720A)	TURB	617	E.4/8.1			S/R
33372		S	ACTUATOR-BATTERY ROOM FAN COIL UNIT 1B SOLENOID (SW720B)	TURB	614	F.8/8.6			S/R
33454		S	ACTUATOR-SCRNHOUSE EXH FAN 1A DISCH DMPR TRAIN A SV/TAV63A	SH	586	6.1			R
33455		S	ACTUATOR-SCRNHOUSE EXH FAN 1A DISCH DMPR TRAIN B SV/TAV63B	SH	586	6.1			R
33633\AFW111A		IS	ACTUATOR-AUX FW PMP 1A OIL COOLER COOLING WTR INLET SV	TURB	587	E.5/8.5			R
33634\AFW111B		IS	ACTUATOR-AUX FW PMP 1B OIL COOLER COOLING WTR INLET SV	TURB	587	F.5/8.5			R
33635\AFW111C		I	ACTUATOR-TURB DRIVEN AUX FW PUMP OIL COOLER COOLING/AFW111-C	TURB	587	E.0/8.5			R
33658		S	ACTUATOR-REACTOR HEAD VENT TRAIN A SV 45A	CONT	652		16	129	S/R
33659		S	ACTUATOR-REACTOR HEAD VENT TRAIN B SV 45B	CONT	651		16	130	S/R
33660		S	ACTUATOR-PRZR HEAD VENT TRAIN A SV 33A	CONT	655		16	130	S/R
33661		S	ACTUATOR-PRZR HEAD VENT TRAIN B SV 33B	CONT	655		17	130	S/R
33662		S	ACTUATOR-REACTOR HEAD VENT TO CNTMT SV 49	CONT	658		16	129	S
33663		S	ACTUATOR-REACTOR HEAD VENT TO PRZR RELIEF TNK SV 46	CONT	658		20	131	S/R
33716\CVC200		S	ACTUATOR-LTDN AND SEAL WTR BYPASS BLOCK 1A SV (SV TO CVC-200)	AUX	618	J.6/7.9			S/R
33717\CVC200		S	ACTUATOR-LTDN AND SEAL WTR BYPASS BLOCK 1B SV (SV TO CVC-200)	AUX	618	J.6/7.9			S/R
33718\CVC203B		S	ACTUATOR-LTDN AND SEAL WTR BYPASS DIVERT 1A SV (SV TO CVC-203B)	AUX	618	J.6/7.9			R

2/15/93 REV #6

PRELIMINARY COPY

EQUIPMENT	PARENT	LIST INDIC	EQUIPMENT DESCRIPTION	BLDG.	ELEV	COL/ROW	FT WALL	DEG	SORT
33719\CVC203B		S	ACTUATOR-LTDN AND SEAL WTR BYPASS DIVERT 1B SV (SV TO CVC 203B)	AUX	618	J.6/7.9			R
33731\PR2B		IS	ACT-PRZR POWER RELIEF CV 1B SOL VLV	CONT	659		24	112	S/R
33734		IS	ACTUATOR-AFW PMP 1A FAN COIL UNIT COOLING VLV SV (SW651)	TURB	591	E.9/8.3			S/R
33740\CVC7		IS	SIGNAL CNVTR-CHRGING LINE REGEN HT EXGR CV SOL VLV (SV TO CVC-7)	AUX	591	HW.0/6N.1			S/R
33750\SW901A-1		S	ACTUATOR-HEADER 1A SHROUD CLG COIL A/B BYPASS SV	CONT	612		6	015	R
33751\SW901B-1		S	ACTUATOR-HEADER 1B SHROUD CLG COIL A/B BYPASS SV	CONT	612		5	020	R
33752\SW901C-1		S	ACTUATOR-HEADER 1C SHROUD CLG COIL C/D BYPASS SV	CONT	598		10	162	R
33753\SW901D-1		S	ACTUATOR-HEADER 1D SHROUD CLG COIL C/D BYPASS SV	CONT	598		9	162	R
33778		IS	ACTUATOR-SW1261/SV33778 CC PMP B FAN COIL CLG WTR	AUX	613	K.7/8N.4			S/R
33781		S	ACTUATOR-SW TO CHARGING PUMP 1C FAN COIL UNIT SV (SW851)	AUX	595	HW.8/6.8			S/R
33785		S	ACTUATOR-CC610A/CV31127 RXCP 1 THERMAL BARRIER CC RETURN	CONT	612		20	245	S/R
33789\LOCA100B		I	ACTUATOR-LOCA100B/CV31725 POST LOCA HYDROGEN TO RECOMBR B SV	ANN	619			268	R
33809\RBV150A		I	ACTUATOR-RBV150B/CD34131 CNTMT FAN COIL UNIT B DISCH DMPR	CONT	666		6	058	R
33810\RBV150B		I	ACTUATOR-RBV150B/CD34131 CNTMT FAN COIL 1B EMERG DISCH DMPR	CONT	666		6	53	R
33811\RBV150C		I	ACTUATOR-RBV150C/CD34132 CNTMT FN COIL UNIT C EMRG DISC DMPR	CONT	631		22	200	R
33812\RBV150D		I	ACTUATOR-RBV150D/CD34133 CNTMT FN COIL UNIT D EMRG DISC DMPR	CONT	634		35	210	R
33815\LOCA201B		I	ACTUATOR-LOCA201B/CV31727 POST LOCA H2 RECMBR B TO CNTMT SV	CONT	611		3	282	R
33838\SW1006C		I	ACTUATOR-SW1006C/CV31746 AUX BLDG BSMT FAN COIL UNIT C SV	AUX	588	G.2/6.6			R
33839\SW1006D		I	ACTUATOR-SW1006D/CV31747 AUX BLDG BSMT FAN COIL UNIT D SV	AUX	588	G.2/6.1			R
33872\IMU3B		I	ACTUATOR-CONDENSATE EMERGENCY MU CV FLUSH MODE	TURB	606	D.2/3.9			R
33875		IS	VALVE-SOLENOID-D/G RM 1A DMPR CONTROL SV 1A3	ADM	593	AE.0/8.2			
33876		IS	VALVE-SOLENOID-D/G RM 1A DMPR CONTROL SV 1A4	ADM	593	AE.0/8.2			
33877		IS	VALVE-SOLENOID-D/G RM 1B DMPR CONTROL SV 1B3	ADM	593	AE.0/5.8			
33878		IS	VALVE-SOLENOID-D/G RM 1B DMPR CONTROL SV 1B4	ADM	593	AE.0/5.8			
34004\TAV61A		IS	ACTUATOR-DIESEL GEN RM 1A INLET DAMPER (TAV61A)	TURB	601	A.0/7.7			S
34011\TAV62A		IS	ACTUATOR-DIESEL GEN RM 1A FIRE DAMPER (TAV62A)	ADM	603	AE.2/7.3			
34012\TAV62B		IS	ACTUATOR-DIESEL GEN RM 1B FIRE DAMPER (TAV 62B)	TURB	603	AE.2/6.7			S/R
34045\TAV61B		IS	ACTUATOR-DIESEL GEN RM 1B INLET DAMPER (TAV 61B)	TURB	601	A.0/6.2			S
34072\TAV60A		IS	ACTUATOR-DIESEL GEN RM OUTSIDE AIR DMPR 1A (TAV60A)	TURB	602	AE.1/8.3			S
34073\TAV60B		IS	ACTUATOR-DIESEL GEN RM OUTSIDE AIR DMPR 1B (TAV60B)	ADM	602	AE.1/5.5			S
34074\TAV63A		IS	ACTUATOR-SCRNHSE EXHAUST FAN 1A DISCH DAMPER (TAV63A)	SH	608	6.0			S
34130\RBV150A		I	ACTUATOR-RBV150A/CD34131 CNTMT FCU A EMERG DISCH DMPR	CONT	666		06	058	S/R
34131\RBV150B		I	ACTUATOR-RBV150B/CD34131 CNTMT FCU B EMERG DISCH DMPR	CONT	666		08	053	S/R
34132\RBV150C		I	ACTUATOR-RBV150C/CD24132 CNTMT FCU C EMERG DISCH DMPR	CONT	631		22	178	S/R
34133\RBV150D		I	ACTUATOR-RBV150D/CD34133 CNTMT FCU D EMERG DISCH DMPR	CONT	634		32	210	S/R
35001		I	SIGNAL CNVTR-RHR 8A/CVC31114 RHR HEAT EXGR A FLOW S/CV	AUX	609	J.5/7.3			S/R
35002		I	SIGNAL CNVTR-RHR 8B/CV31115 RHR HEAT EXGR B FLOW S/CV	AUX	609	J.5/6.6			S/R
35014		I	TRANSDUCER-PRZR SPRAY FRM COLD LEG LOOP	CONT	631		16	036	S/R
35036		I	TRANSDUCER-PRZR SPRAY FRM COLD LEG LOOP A S/CV	CONT	631		31	233	S/R
4130501	1E-0403	S	CONTROL STATION-RCP 1A THERMAL BARRIER TEMP CONTROLLER	AUX	626	G.9/7.3			S/R
4131201	1E-0403	S	CONTROL STATION-RCP 1B THERMAL BARRIER TEMP CONTROLLER	AUX	626	G.9/7.3			S/R
4131302	1E-0403	S	CONTROL STATION-SI-PUMP 1A	AUX	626	G.7/7.3			R
4131402	1E-0403	S	CONTROL STATION-SI-PUMP 1B	AUX	626	G.7/7.3			R
41624	1E-0411	S	MONITOR-SUBCOOLED MARGIN MONITOR - TRAIN A	AUX	631	GW.2/7.0			R
41625	1E-0411	S	MONITOR-SUBCOOLED MARGIN MONITOR - TRAIN B	AUX	631	GW.2/7.0			R

PRELIMINARY COPY

EQUIPMENT	PARENT	LIST INDIC	EQUIPMENT DESCRIPTION	BE G.	ELEV	COL/ROW	FT WALL	DEG	SORT
4301301	1E-0403	S	CONTROL STATION-MAIN STEAM HDR 1A CONTROLLED RELIEF VALVE S	AUX	626	GW.4/7.8			R
4301302	1E-0403	S	CONTROL STATION-STEAM RELEASE CONT S/G B PORV SD-3B/CV-31174 AUX	AUX	626	GW.4/7.7			S/R
4320302	1E-0402	S	CONTROL STATION-CHARGING PUMP 1A SPEED CONTROL STATION	AUX	626	GW.2/7.3			S/R
4320303	1E-0402	S	CONTROL STATION-CHARGIN PUMP 1B SPEED CON STATION	AUX	626	GW.2/7.3			S/R
4320304	1E-0402	S	CONTROL STATION-CHARGING PUMP 1C SPEED CONTROL STATION	AUX	626	GW.2/7.3			S/R
44201	1E-0402	S	INSTRUMENT-CONTROL BANK A ROD GROUP 1 STEP POSITION	AUX	626	GW.3/7.5			S
44202	1E-0402	S	INSTRUMENT-CONTROL BANK A ROD GROUP 2 STEP POSITION	AUX	626	GW.3/7.5			S
44203	1E-0402	S	INSTRUMENT-CONTROL BANK B ROD GROUP 1 STEP POSITION	AUX	626	GW.3/7.5			S
44205	1E-0402	S	INSTRUMENT-CONTROL BANK C ROD GROUP 1 STEP POSITION	AUX	626	GW.3/7.5			S
44206	1E-0402	S	INSTRUMENT-CONTROL BANK C ROD GROUP 2 STEP POSITION	AUX	626	GW.3/7.5			S
44207	1E-0402	S	INSTRUMENT-CONTROL BANK D ROD GROUP 1 STEP POSITION	AUX	626	GW.3/7.5			S
44209	1E-0402	S	INSTRUMENT-SHUTDOWN BANK A ROD GROUP 1 STEP POSITION	AUX	626	GW.3/7.5			S
44210	1E-0402	S	INSTRUMENT-SHUTDOWN BANK A ROD GROUP 2 STEP POSITION	AUX	626	GW.3/7.5			S
44211	1E-0402	S	INSTRUMENT-SHUTDOWN BANK B ROD GROUP 1 STEP POSITION	AUX	626	GW.3/7.5			S
4461101	1E-0400	S	INDICATOR-DIESEL GENERATOR 1A - FREQ	AUX	626	GW.4/8.5			
4461102	1E-0400	S	INDICATOR-DIESEL GENERATOR 1A - FREQ	AUX	626	GW.4/8.5			
4461103	1E-0400	S	INDICATOR - DIESEL GENERATOR 1A - POWER	AUX	630	GW.7/8.5			
4461201	1E-0400	S	INDICATOR - DIESEL GENERATOR 1A - PHASE A CURRENT	AUX	626	GW.4/8.5			
4461202	1E-0400	S	INDICATOR - DIESEL GENERATOR 1A - PHASE B CURRENT	AUX	626	GW.4/8.5			
4461203	1E-0400	S	INDICATOR - DIESEL GENERATOR 1A - PHASE C CURRENT	AUX	626	GW.4/8.5			
4462001	1E-0400	S	INDICATOR - DIESEL GENERATOR 1B - PHASE A CURRENT	AUX	626	GW.4/8.8			
4462002	1E-0400	S	INDICATOR - DIESEL GENERATOR 1B - PHASE B CURRENT	AUX	626	GW.4/8.8			
4462003	1E-0400	S	INDICATOR - DIESEL GENERATOR 1B - PHASE C CURRENT	AUX	626	GW.4/8.8			
4462101	1E-0400	S	METER-DIESEL GENERATOR 1B FREQUENCY FM	AUX	626	GW.4/8.7			S
4462102	1E-0400	S	INDICATOR - DIESEL GENERATOR 1B - VOLTAGE	AUX	626	GW.4/8.5			
4462103	1E-0400	S	INSTRUMENT-GENERATOR 1B WATTS WM	AUX	626	GW.4/8.7			S
46111	1E-0401	IS	CONTROL SWITCH-AFW PUMP 1A CONTROL ROOM SWITCH	AUX	626	GW.4/7.8			S
46112	1E-0401	IS	CONTROL SWITCH-AFW PUMP 1B CONTROL ROOM SWITCH	AUX	626	GW.4/7.8			S
46123	1E-0401	IS	CONTROL SWITCH-AFW PUMP 1A CROSSOVER VALVE (MV-32027)	AUX	629	GW.4/7.8			S
46124	1E-0401	IS	CONTROL SWITCH-AFW PUMP 1B CROSSOVER VALVE (MV-32028)	AUX	629	GW.4/7.8			S
46324	1E-0403	IS	PRESSURIZER PRESSURE CONTROL CHANNEL SELECTOR SWITCH	AUX	629	GW.1/7.3			S
46327	1E-0403	IS	PRESSURIZER LEVEL CONTROL CHANNEL SELECTOR SWITCH	AUX	629	G.9/7.3			S
48512	RR163	S	CONTROLLER-SRVC WTR HDR 1A P XMTR TU	AUX	613	G.8/8.7			R
65000		S	CONTROLLER-CHARGIN PUMP 1C CONTROLLER (LOCAL)	AUX	586	HW.0/8.3			S
AFW4A		I	VALVE-CHECK-AUX FEEDWATER PUMP DISCHARGE AT STM GEN 1A	CONT	664		12	292	
AFW4B		I	VALVE-CHECK-AUX FEEDWATER PUMP DISCHARGE AT STM GEN 1B	CONT	664		15	081	
BRA101		IS	BATTERY-SAFEGUARDS STATION BATTERY A	TURB	606	E.0/8.8			S/R
BRA102		IS	CABINET-BRA102 125VDC MAIN DISTR. CAB.	TURB	606	D1.4/8.3			S/R
BRA104		IS	CABINET-BRA104 125VDC DISTR. CAB.	TURB	606	E.0/8.3			S/R
BRA105		IS	CABINET-MIN. INTERRUPT. BUS 120/208 VAC DISTR. CAB.	TURB	606	E.2/8.3			S
BRA106		IS	TRANSFORMER-INSTRUMENT BUS TRANSFORMER	TURB	606	E.8/8.3			S/R
BRA107		IS	RELAY-ELECT-BRA107 AUTOMATIC TRANSFER SWITCH	TURB	608	E.8/8.4			S/R
BRA108		IS	CHARGER-BATTERY CHARGER BRA108 125V DC	TURB	606	D1.4/8.9			S/R
BRA111		IS	INVERTER-BRA 111 (INSTRUMENT BUS I)	TURB	606	E.0/8.5			S/R
BRA112		IS	INVERTER-BRA 112 (INSTRUMENT BUS IV)	TURB	606	E.0/8.5			S/R

PRELIMINARY COPY

EQUIPMENT	PARENT	LIST INDIC	EQUIPMENT DESCRIPTION	BLDG.	ELEV	COL/ROW	FT WALL	DEG	SORT
BRA113EXT		IS	CABINET-BRA113EXT 118 VOLT AC DISTRIBUTION CABINET	TURB	586	D1.1/8.4			S/R
BRA127		I	PANEL-BRA127 120/208 VOLT DISTRIBUTION PANEL	TURB	606	F.5/8.5			S
BRB101		IS	BATTERY-SAFEGUARDS STATION BATTERY B	TURB	606	F.5/8.8			S
BRB102		IS	CABINET-BRB102 125VDC MAIN DISTR. CAB.	TURB	606	F.0/8.3			S/R
BRB104		IS	CABINET-BRA104 125VDC DISTR. CAB.	TURB	606	F.3/8.3			S/R
BRB105		IS	CABINET-MIN. INTERRUPT. BUS 120/208 VAC DISTR. CAB.	TURB	606	F.4/8.3			S/R
BRB106		IS	TRANSFORMER-BRB106 INSTRUMENT BUS	TURB	606	F.9/8.4			S/R
BRB107		IS	RELAY-ELECT-BRB107 AUTOMATIC TRANSFER SWITCH	TURB	608	G.0/8.5			S/R
BRB108		IS	CHARGER-BATTERY CHARGER BRB108 125V DC	TURB	606	F.9/8.7			S/R
BRB111		IS	INVERTER-BRB111 (INSTRUMENT BUS III)	TURB	606	F.3/8.5			S/R
BRB112		IS	INVERTER-BRB112 (INSTRUMENT BUS III)	TURB	606	F.4/8.5			S/R
BRB113EXT		IS	CABINET-BRB113EXT 118VAC DISTR. CAB	TURB	606	E.9/9.0			S/R
BRB127		I	PANEL-BRB127 120/208 VOLT DISTRIBUTION PANEL	TURB	606	D1.7/8.5			S
BRD101		I	BATTERY-NON-SAFEGUARD BATTERY D	TSC	606	F.0/10.5			S/R
BRD102		I	CABINET-BRD102 125VDC DIST CAB	TSC	606	F.9/10.0			S/R
BRD103		I	CABINET-BRD103 125VDC MAIN DIST CAB	TURB	606	F.2/8.3			S/R
BRD108		I	BATTERY CHARGER BRD108	TSC	606	GO/11.6			S/R
BRD109		I	INVERTER-BRD109 (NON-INTERRUPTABLE)	TURB	606	F.0/8.5			S/R
BRD115		I	CABINET-BRD115 120VAC DISTR CAB	TURB	610	F.5/8.3			S/R
BUS46		I	SWITCHGEAR-SEC-480V SWITCHGEAR BUS 46	TSC	606	EO.8/11.5			S/R
BUS5		IS	SWITCHGEAR-PRIM-4160V SWITCHGEAR BUS 5	ADM	586	AE.8/7.6			S/R
BUS51		IS	SWITCHGEAR-SEC-480V SWITCHGEAR BUS 51	TURB	586	A.6/8.7			S/R
BUS52		IS	SWITCHGEAR-SEC-480V SWITCHGEAR BUS 52	TURB	586	B.0/8.7			S/R
BUS6		I	SWITCHGEAR-PRIM-4160V SWITCHGEAR BUS 6	ADM	586	AE.8/6.2			S/R
BUS61		IS	SWITCHGEAR-SEC-480V SWITCHGEAR BUS 61	TURB	586	C.1/8.3			S/R
BUS62		IS	SWITCHGEAR-SEC-480V SWITCHGEAR BUS 62	TURB	586	C.8/8.3			S/R
CVC101A		I	VALVE-RELIEF-CHARGING PUMP 1A DISCH RELIEF	AUX	595	H.2/6.1			
CVC101B		I	VALVE-RELIEF-CHARGING PUMP 1B DISCH RELIEF	AUX	592	H.5/6.1			
CVC101C		I	VALVE-RELIEF-CHARGING PUMP 1C DISCH RELIEF	AUX	592	HW.2/6.1			
CVC261		S	VALVE-RELIEF-SEAL WATER RETURN LINE TO PRESSURIZER RLF TANK	CONT	604		11	007	S
DR101/1E-0480		IS	CONTROL ELECT-DR101 DIESEL GEN CONTROL CAB 1A	ADM	586	AE.2/9.0			S/R
DR111/1E-0490		IS	CONTROL ELECT-DR111 DIESEL GEN CONTROL CAB 1B	ADM	586	AE.2/5.1			S/R
MCC3352		S	CABINET FOR MCC BUS3352	AUX	606	J.3/8.2			S/R
MCC46B		I	CABINET FOR MCC BUS 46B	TSC	606	EO.4/11.3			S/R
MCC5262		IS	CABINET FOR MCC BUS 5262	TURB	586	E.0/8.2			S/R
MCC52A		IS	CABINET FOR MCC BUS 52A	ADM	586	AE.8/9.0			S/R
MCC52B		IS	CABINET FOR MCC BUS 52B	AUX	606	H.4/6.2			S/R
MCC52BEXT		IS	CABINET FOR MCC BUS 52BEXT	AUX	606	H.4/6.2			S/R
MCC52C		IS	CABINET FOR MCC BUS 52C	TURB	606	E.4/8.3			S/R
MCC52D		IS	CABINET FOR MCC BUS 52D	SH	586	6.2			S/R
MCC52E		IS	CABINET FOR MCC BUS 52E	AUX	586	H.9/8.0			S/R
MCC52F		IS	CABINET FOR MCC BUS 52F	AUX	642	G.4/7.6			S/R
MCC62A		IS	CABINET FOR MCC BUS 62A	ADM	586	AE.5/5.0			S/R
MCC62B		IS	CABINET FOR MCC BUS 62B	AUX	606	H.2/2.7			S/R
MCC62BEXT		IS	CABINET FOR MCC BUS 62BEXT	AUX	606	GW.4/4.3			S/R

PRELIMINARY COPY

SSEL/PEEE MASTER LIST Page: 15

EQUIPMENT	PARENT	LIST INDIC	EQUIPMENT DESCRIPTION	BLDG.	ELEV	COL/ROW	FT WALL	DEG	SORT
MCC62C		I S	CABINET FOR MCC BUS 62C	TURB	606	F.7/8.3			S/R
MCC62D		I S	CABINET FOR MCC BUS 62D	SH	586	3.8			S/R
MCC62E		I S	CABINET FOR MCC BUS 62E	AUX	586	G.0/6.3			S/R
MCC62G		I S	CABINET FOR MCC BUS 62G	AUX	626	GW.3/2.1			S/R
MCC62H		I S	CABINET FOR MCC BUS 62H	AUX	586	G.1/7.8			S/R
MCC62J		I S	CABINET FOR MCC BUS 62J	AUX	642	G.3/6.3			S/R
PR3A		I	VALVE-RELIEF-PRESSURIZER SAFETY RELIEF TO PRSZR RELIEF TANK	CONT	659		20	119	
PR3B		I	VALVE-RELIEF-PRESSURIZER SAFETY RELIEF TO PRSZR RELIEF TANK	CONT	659		16	109	
RBV150A\34130		I	DAMPER-RBV150A/CD34130 CNTMT FAN COIL UNIT A EMERG DISCH DMPR	CONT	666		48	058	
RBV150B\34131		I	DAMPER-RBV150B/CD34131 CNTMT FAN COIL UNIT B EMERG DISCH DMPR	CONT	666		48	053	
RBV150C\34132		I	DAMPER-RBV150C/CD34132 CNTMT FAN COIL UNIT C EMERG DISCH DMPR	CONT	633		22	178	
RBV150D\34133		I	DAMPER-RBV150D/CD32133 CNTMT FAN COIL UNIT D EMERG DISCH DMPR	CONT	633		32	210	
RR163		S	RELAY RACK-RR163-BOP INST RACK 1A	AUX	606	G.7/8.7			
SD1A1		I S	VALVE-RELIEF-SAFETY TO ATMOS-STEAM GEN 1A	AUX	625	M.3/5S.2			S
SD1A2		I S	VALVE-RELIEF-SAFETY TO ATMOS-STEAM GEN 1A	AUX	625	M.2/5S.3			S
SD1A3		I S	VALVE-RELIEF-SAFETY TO ATMOS-STEAM GEN 1A	AUX	625	M.1/5S.6			S
SD1A4		I S	VALVE-RELIEF-SAFETY TO ATMOS-STEAM GEN 1A	AUX	625	M.0/5S.7			S
SD1A5		I S	VALVE-RELIEF-SAFETY TO ATMOS-STEAM GEN 1A	AUX	625	M.0/5S.8			S
SD1B1		I S	VALVE-RELIEF-SAFETY TO ATMOS-STEAM GEN 1B	AUX	623	HE.6/3.9			S
SD1B2		I S	VALVE-RELIEF-SAFETY TO ATMOS-STEAM GEN 1B	AUX	623	HE.6/4.0			S
SD1B3		I S	VALVE-RELIEF-SAFETY TO ATMOS-STEAM GEN 1B	AUX	623	HE.6/4.1			S
SD1B4		I S	VALVE-RELIEF-SAFETY TO ATMOS-STEAM GEN 1B	AUX	623	HE.6/4.3			S
SD1B5		I S	VALVE-RELIEF-SAFETY TO ATMOS-STEAM GEN 1B	AUX	623	HE.6/4.4			S
TAV60A\34072		I S	DAMPER-OUTSIDE AIR INLET DAMPER TO DG ROOM 1A	ADM	602	AE.1/8.3			
TAV60B\34073		I S	DAMPER-OUTSIDE AIR INLET DAMPER TO DB ROOM 1B	ADM	602	AE.1/5.5			
TAV61A\34004		I S	DAMPER-DIESEL GEN RM RECIRC SUPPLY FAN 1A DAMPER	ADM	601	A.0/7.7			
TAV61B\34045		I S	DAMPER-DIESEL GEN RM RECIRC SUPPLY FAN 1B DAMPER	ADM	601	A.0/6.2			
TAV62A\34011		I S	DAMPER-DIESEL GEN RM 1A OUTLET DAMPER	ADM	603	AE.2/7.3			
TAV62B\34012		I S	DAMPER-DIESEL GEN RM 1B OUTLET DAMPER	ADM	603	AE.2/6.7			
TAV63A\34074		I S	DAMPER-SCREENHOUSE EXHAUST FAN 1A DAMPER	SCRN	608	6.0			
TB1279			TERM BOX - AUX RELAY BOX FOR SWGR BUS 1-3 & 1-4	TURB	586	B/9			
TB1626			TERM BOX FOR SV33429	TURB	642	GW.0/4.9			
TB2293			TERM BOX - CNTNT COOLING TRN A LOCKOUT RELAY	AUX	626	H/7.8			
XFMR51		I S	TRANSFORMER-STATION SERVICE TRANSFORMER 51	TURB	586	A.3/8.8			S/R
XFMR52		I S	TRANSFORMER-STATION SERVICE TRANSFORMER 52	TURB	586	B.3/8.8			S/R
XFMR53		S	TRANSFORMER-1-53	AUX	606	J.4/8.2			S/R
XFMR61		I S	TRANSFORMER-STATION SERVICE TRANSFORMER 61	TURB	586	C.0/8.3			S/R
XFMR62		I S	TRANSFORMER-STATION SERVICE TRANSFORMER 62	TURB	586	D.0/8.3			S/R
XFMR63		S	PRESSURIZER HEATERS XFMR 1-63	AUX	626	GW.6/2.1			S/R

2/15/93 REV #6