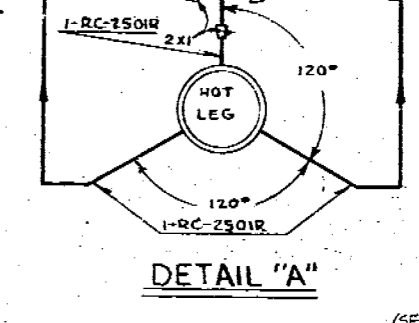


REFERENCE DRAWINGS:
 1. LEGEND X-K100-45
 2. LINE LIST X-K100-366

- NOTES:
- 2 1/2" INSIDE DIA.
 - 3" INSIDE DIA.
 - 2 1/2" INSIDE DIA.
 - ALL ITEM NUMBERS INCLUDE PREFIX WPSRC
 - SCHEDULE 40 PIPE
 - 1/2" SCH. 40 NOZZLE
 - 3/4" PIPE X 3/8" TUBE INSERT
 - ELBOW FLOW METER
 - SPRAY LINE SCOP
 - RTD MANIFOLD - PIPE AND RTD'S SUPPLIED AS A PACKAGE. MANIFOLD APPROX. 20 INCHES LONG.
 - LOCATE RTD MANIFOLD ISOLATION VALVES APPROX. 9 INCHES FROM MANIFOLD.
 - LOCATE HOT AND COLD LEG COMMON CONNECTION AS CLOSE AS POSSIBLE TO COMMON PIPE CONNECTION TO PUMP SUCTION LINE.
 - LOCATE CONNECTION ON UPPER 180° OF PIPE CIRCUMFERENCE.
 - ALL BYPASS LOOP PIPING AND RTD MANIFOLDS SHALL HAVE REMOVABLE INSULATION UP TO ROOT VALVES.
 - LOCATE ROOT VALVE ABOVE ELEVATION OF REACTOR VESSEL NOZZLES.
 - LENGTH OF HOT LEG 2 INCH PIPE UPSTREAM OF RTD MANIFOLD 1A TO B TO BE A MAXIMUM OF 3 FEET.
 - LENGTH OF COLD LEG 2 INCH PIPE UPSTREAM OF RTD MANIFOLD 1C TO D TO BE A MAXIMUM OF 6 FEET.

SI APERTURE CARD

INSTRUMENTATION
 PIONEER SERVICE & ENGINEERING CO.
 1000 S. 10TH ST., SUITE 100
 MILWAUKEE, WISCONSIN 53204
 PHONE: 414-224-1100
 FAX: 414-224-1101
 E-MAIL: PSE@PSE.COM



PARALLEL 1/2" PIPE PATHS SHOULD BE APPROX. EQUAL EQUIVALENT LENGTHS WITH FLOW PATH NOT EXCEEDING 6" LINEAR FEET. PENETRATIONS SHOULD BE IN THE SAME VERTICAL PLANE.

PDD 0013
 Not Complete

WISCONSIN PUBLIC SERVICE CORPORATION
 KEWAUNEE NUCLEAR POWER PLANT - UNIT NO. 1
 CARLTON, KEWAUNEE COUNTY, WISCONSIN

FLOW DIAGRAM
REACTOR COOLANT SYSTEM

Designed By
Pioneer Service & Engineering Co.

PROJECT & DRAWING NO.
237127A-X-K100-10

890811044
 50-305
 870809036
 8/1/89