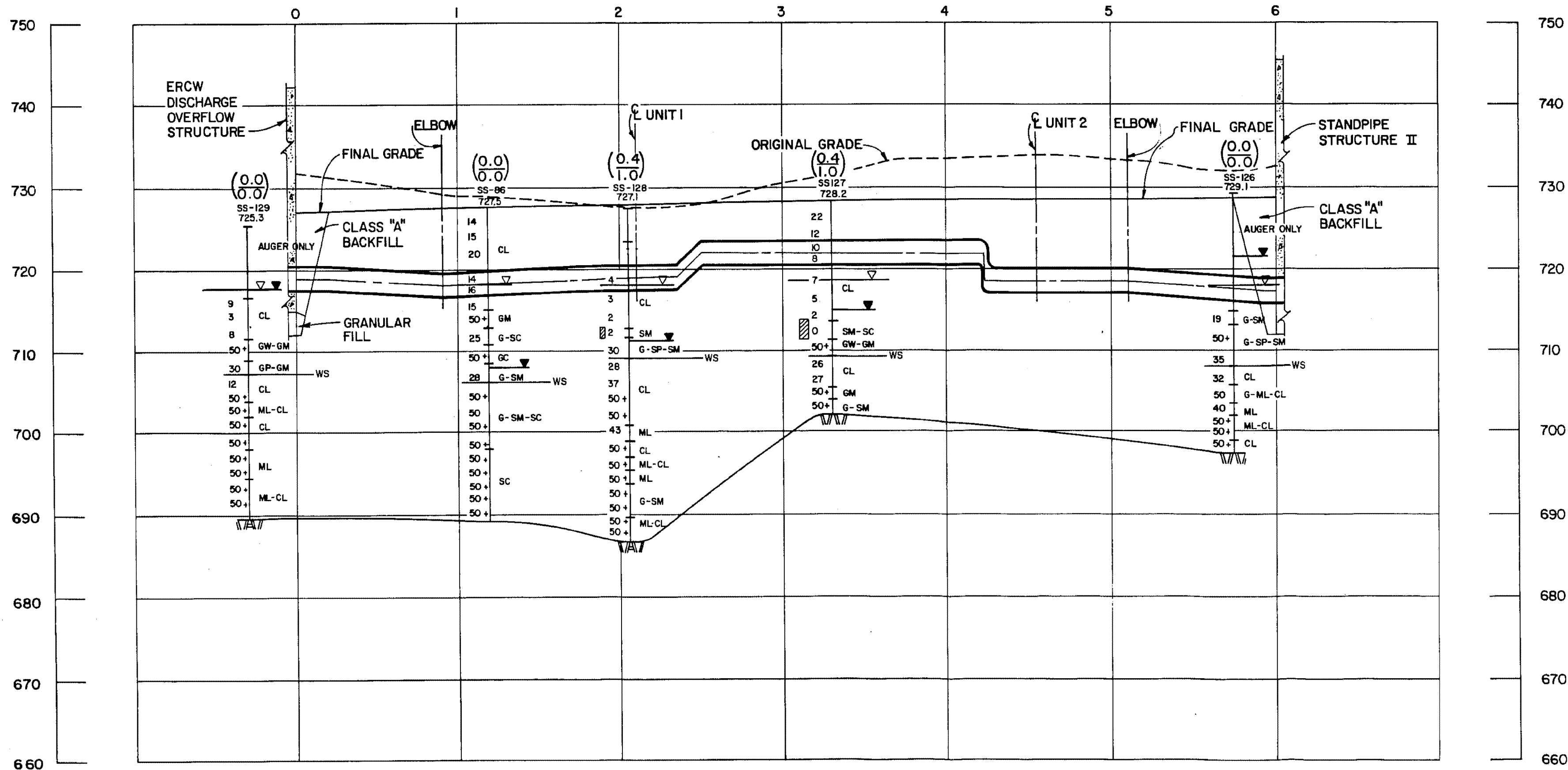


28



C-C

POTENTIAL SETTLEMENT BASED ON 1.5% ϵ CRITERIA (INCHES)
 (0.4)
 (1.0)
 POTENTIAL SETTLEMENT BASED ON 6% ϵ CRITERIA (INCHES)

- ▽ DESIGN WATER TABLE
- ▼ WATER TABLE (24 HR)
- MH SOIL CLASSIFICATION
- 13 BLOW COUNT
- ▨ POTENTIALLY LIQUEFIABLE SOIL
- (SEE NOTE)
- WS WEATHERED SHALE

NOTE:

1. LIQUEFACTION BASED ON TOP OF GROUND ACCELERATION OF 0.4g AND SEED-IDRISS (1971) CORRELATION FOR SANDS.

Added by Amendment 50

WATTS BAR NUCLEAR PLANT
 FINAL SAFETY
 ANALYSIS REPORT

ERCW PIPELINE
 SECTION C-C
 FIGURE 2.5-573