

B 06/13/78

REGULATORY INFORMATION DISTRIBUTION SYSTEM (RIDS)
DISTRIBUTION FOR INCOMING MATERIAL 50-305

REC: CASE E G
NRC

ORG: JAMES E W
WI PUB SVC

DOCDATE: 06/09/78
DATE RCVD: 06/12/78

DOCTYPE: LETTER NOTARIZED: NO

COPIES RECEIVED

SUBJECT:

LTR 1 ENCL 40

FORWARDING COPY OF FINAL SAFETY ANALYSIS REPT CHANGE NO 31, UPDATING FSAR
APPENDIX G, CONSISTING OF REVISIONS MADE TO SUBJECT FACILITY'S EMERGENCY
PLAN.

*Revised GP 6/21/79 - Originally not updated.
Superseded attached.*

PLANT NAME: KEWAUNEE

REVIEWER INITIAL: XJM
DISTRIBUTOR INITIAL: DL

***** DISTRIBUTION OF THIS MATERIAL IS AS FOLLOWS *****

NOTES:

- 1 & E - 3 CYS ALL MATERIAL
2. LAWRENCE(OELD) - 1 COPY ALL MATERIAL

GENERAL DISTRIBUTION FOR AFTER ISSUANCE OF OPERATING LICENSE.
(DISTRIBUTION CODE A001)

FOR ACTION: BR CHIEF ORB#1 BC**W/7 ENCL

INTERNAL:

REG FILE**W/ENCL
I & E**W/2 ENCL
HANAUER**W/ENCL
AD FOR OPER TECH**W/ENCL
REACTOR SAFETY BR**W/ENCL
EEB**W/ENCL
J. MCGOUGH**W/ENCL

NRC PDR**W/ENCL
OELD**LTR ONLY
CORE PERFORMANCE BR**W/ENCL
ENGINEERING BR**W/ENCL
PLANT SYSTEMS BR**W/ENCL
EFFLUENT TREAT SYS**W/ENCL

EXTERNAL:

LPDR'S
KEWAUNEE, WI**W/ENCL
TIC**W/ENCL
NSIC**W/ENCL
ACRS CAT B**W/16 ENCL

DISTRIBUTION: LTR 40 ENCL 39
SIZE: 1P+25P

CONTROL NBR: 781640003

***** THE END *****

AP GP

S NUCLEAR REGULATORY COMMISSION
C DAILY ACCESSION LIST

02/09/78

PAGE 210

FILE LOCATION

7354-0188

EMO

P

TASK NBR:
FICHE NBR :
NOTARIZED: NO
LPDR: NO CLASS:

J

B

RECP AFFILIATION: NRC
ORG AFFILIATION: NRC
NRC

FICATION.

7342-0092

EMO

P

TASK NBR:
FICHE NBR :
NOTARIZED: NO
LPDR: NO CLASS:

J

B

RECP AFFILIATION: NRC
ORG AFFILIATION: NRC

FICATION - SNUPPS PLANTS.

8037-0050

ETTER

+20P+4P

TASK NBR:
FICHE NBR :
NOTARIZED: NO
LPDR: YES CLASS:

RECP AFFILIATION: UNION ELEC
ORG AFFILIATION: NRC

NG CORRECTION TO ITEMS OF NONCOMPLIANCE CITED IN ENCL IE INSPEC REPT NO
7-10 CONDUCTED BY J. E. FOSTER, T. E. VANDEL AND K. R. NAIDU OF NRC ON
8, NOV 2-4, & 21-22, 1977...W/ATT REPT AND NOTICE OF VIOLATION.

REGULATORY DOCKET #50-305

WISCONSIN PUBLIC SERVICE CORPORATION



June 9, 1978

P.O. Box 1200, Green Bay, Wisconsin 54305

Mr. E. G. Case, Acting Director
Office of Nuclear Reactor Regulation
U. S. Nuclear Regulatory Commission
Washington, D. C. 20555

Dear Mr. Case:

Subject: Docket 50-305
Operating License DPR-43
FSAR Change Number 31

Enclosed you will find forty (40) copies of FSAR Change Number 31. This change updates FSAR Appendix G, Kewaunee Emergency Plan, to incorporate recent revisions made to the Kewaunee Nuclear Power Plant Emergency Plan.

Very truly yours,

E. W. James
Senior Vice President
Power Supply & Engineering

bas

Enc. - 40

1978 JUN 12 AM 11 47
REGISTRATION
SERVICES UNIT
U.S. NRC
REGISTRATION
SERVICES
BRANCH

781640003

A001
S
1/40
ADD
EMERG
PLAN

INSTRUCTIONS FOR MAKING PAGE CHANGES

Enclosed is change number 31 to the FSAR.

Please make the following changes to your FSAR and file this instruction sheet in the front of Volume 1 as a record of the change.

Insert Pages

Remove Pages

Volume 1 - Index

G-i & G-ii 31/6-9-78

G-i & G-ii 17/5-12-72

Volume 5 - Appendix G

G-i & G-ii 31/6-9-78

G-i & G-ii 17/5-12-72

G-I-1 thru G-III-2 31/6-9-78

G-I-1 thru G-III-3 17/5-12-72

APPENDIX G - EMERGENCY PLAN

TABLE OF CONTENTS

<u>Section</u>	<u>Page</u>
I. Introduction	I-1
A. Purpose	I-1
B. Scope	I-1
II. Organization for Emergencies	II-1
A. Emergency Organization	II-1
B. Emergency Classifications	II-3
1. Local Emergency	II-3
a. Non-radiological Industrial Accidents	II-3
b. Personnel Injury Involving Radiation Contamination	II-4
c. Excessive Personnel Exposure	II-5
d. Fire Emergency	II-5
e. Radioactive Spills	II-6
f. Radioactivity Release to Unrestricted Areas	II-7
2. Site Emergencies	II-7
3. Off-site Emergencies	II-10
C. Emergency Control	II-12
1. Control Room (Shift Supervisor In Charge)	II-12
2. Site Emergency Center (SED In Charge)	II-12
D. Emergency Actions (Kewaunee)	II-13
1. Immediate Action	II-13
2. Local Emergency Actions	II-13
3. Site Emergency Actions	II-15
E. Notification of Off-Site Support Groups	II-18
F. Emergency Actions (Off-Site Support Group)	II-19
1. Action by State Police	II-19
2. Action by Chicago Operations Office - AEC Personnel	II-19
3. Action by Wisconsin State Department of Health	II-20
4. Action by Bureau of Radiological Health - PHS	II-20
5. Action by Wisconsin Electric Power Company	II-21
6. Action by local Fire Department	II-21
7. Action by Medical Support Groups	II-21
8. Action by Civil Defense	II-21
G. Security Plan Compatibility	II-22

<u>Section</u>	<u>Page</u>
III. Coordination with Off-Site Support Groups	III-1
A. Letters of Agreement	III-1
B. Special Qualifications of Off-Site Support Groups	III-1
1. Chicago Operations Office - AEC	III-1
2. Wisconsin State Department of Health	III-1
3. Wisconsin State Police	III-1
4. Wisconsin Electric Power Company	III-2
5. Medical Consultant and Hospitals	III-2
6. Bureau of Radiological Health and EPA	III-2
7. Tisch Mills Fire Department	III-2
8. Ambulance Service	III-3
9. Civil Defense	III-3
C. Public and Industrial Water Supplies	III-3

APPENDIX G - EMERGENCY PLAN

TABLE OF CONTENTS

<u>Section</u>	<u>Page</u>
I. Introduction	I-1
A. Purpose	I-1
B. Scope	I-1
II. Organization for Emergencies	II-1
A. Emergency Organization	II-1
B. Emergency Classifications	II-3
1. Local Emergency	II-3
a. Non-radiological Industrial Accidents	II-3
b. Personnel Injury Involving Radiation Contamination	II-4
c. Excessive Personnel Exposure	II-5
d. Fire Emergency	II-5
e. Radioactive Spills	II-6
f. Radioactivity Release to Unrestricted Areas	II-7
2. Site Emergencies	II-7
3. Off-site Emergencies	II-10
C. Emergency Control	II-12
1. Control Room (Shift Supervisor In Charge)	II-12
2. Site Emergency Center (SED In Charge)	II-12
D. Emergency Actions (Kewaunee)	II-13
1. Immediate Action	II-13
2. Local Emergency Actions	II-13
3. Site Emergency Actions	II-15
E. Notification of Off-Site Support Groups	II-18
F. Emergency Actions (Off-Site Support Group)	II-19
1. Action by State Police	II-19
2. Action by Chicago Operations Office - AEC Personnel	II-19
3. Action by Wisconsin State Department of Health	II-20
4. Action by Bureau of Radiological Health - PHS	II-20
5. Action by Wisconsin Electric Power Company	II-21
6. Action by local Fire Department	II-21
7. Action by Medical Support Groups	II-21
8. Action by Civil Defense	II-21
G. Security Plan Compatibility	II-22

<u>Section</u>	<u>Page</u>
III. Coordination with Off-Site Support Groups	III-1
A. Letters of Agreement	III-1
B. Special Qualifications of Off-Site Support Groups	III-1
1. Chicago Operations Office - AEC	III-1
2. Wisconsin State Department of Health	III-1
3. Wisconsin State Police	III-1
4. Wisconsin Electric Power Company	III-2
5. Medical Consultant and Hospitals	III-2
6. Bureau of Radiological Health and EPA	III-2
7. Tisch Mills Fire Department	III-2
8. Ambulance Service	III-3
9. Civil Defense	III-3
C. Public and Industrial Water Supplies	III-3

KEWAUNEE EMERGENCY PLAN

I. Introduction

A. Purpose

The fundamental objective of the Kewaunee Emergency Plan is to safeguard the health and safety of the general public, plant personnel, and other persons temporarily or permanently assigned to the reactor facility. The purpose of the Emergency Plan is to identify the protective action levels, delineate the organization for coping with emergencies, define and specify the duties of plant personnel, define and outline the protective measures which are to be initiated in the event of an accident which could produce a non-radiological or radiological hazard. (Detailed emergency procedures required to implement the Emergency Plan have been developed and are available for use at the plant site.) All plant supervisory personnel have full authority to immediately initiate the emergency actions called for in the Emergency Plan and Procedures.

B. Scope

The Emergency Plan outlines specific procedures and responsibilities that will be put into effect for any incident that could result in unnecessary radiation exposures beyond the limits recommended by Title 10 CFR Part 20 and for any radiation level at the exclusion area perimeter which could result in an exposure above the doses calculated in the Kewaunee Nuclear Power Plant "Final Safety Analysis Report", for the "Design Basis Accident". The Emergency Plan is concerned with the following basic activities:

1. Establish an Emergency Organization to direct the response to any emergency condition or radiological incident and to limit the consequences of the incident.
2. Control of on-site and off-site surveillance activities to assess the extent and significance of any uncontrolled release of radioactive material; notification and coordination of off-site supporting groups as required.
3. Establish procedures to identify and evaluate a spectrum of accidents and their effect on members of the public and/or plant personnel.
4. Establish the protective action levels and protective measures required to protect public and plant personnel including measures for recovery and re-entry.

II. Organization for Emergencies

A. Emergency Organization

1. Figure II-1 lists the normal operating crew of the plant that is qualified to perform all actions that may be necessary to institute immediate protective measures and to implement the Emergency Plan. The senior member of the plant organization present has the authority to initiate and administer the plan in any emergency. The technical staff is available to provide assistance as required, but the normal operating staff is self-reliant for a sufficient amount of time until other staff personnel are assigned or until the Site Emergency Director takes complete charge.
2. An emergency operating organization consisting of Site Emergency Directors has been designated to augment the operating crew and provisions have been made for smooth and rapid integration of other personnel to the emergency operating organization. The Site Emergency Director will establish Emergency Control Center and he has the responsibility to augment his staff with other corporate personnel as required. Figure II-2 describes the duties and responsibilities of the Emergency Organization.
3. The On-Call Site Emergency Directors will normally consist of the Plant Superintendent, the Assistant Plant Superintendent, the Results Engineer, Operations Supervisor and the Shift Supervisor not assigned to a shift. The Emergency Plan shall immediately reflect any changes in these assignments.

4. In case of a site evacuation, the Shift Supervisor during back shifts, weekends and holidays shall assume the role of Site Emergency Director and direct evacuation, establish communication with the assembly area, control reactor shutdown, determine areas of safe access, and organize staff assistance. From surveys of air contamination and background activity, he will plan either entry of survey teams or evacuation of the control room itself. He will continue in this capacity until relieved by the Site Emergency Director.
5. At least one On-Call Site Emergency Director will be available by telephone during weekends and holidays and will be able to respond to any incident that may occur at the Kewaunee Nuclear Plant within a 45-minute time interval.
6. The Plant Superintendent is responsible for overall plant administration. During emergency conditions his responsibility includes overall supervision of emergency operations and notification of outside agencies. All releases to the news media shall originate from his office. (In his absence, the Assistant Plant Superintendent will assume this responsibility.)
7. Radiation Emergency Team

Two (2) categories shall exist in this area; the Radiation Emergency Team for normal working hours, and the On-Call Radiation Team for weekends and holidays.

 - a. The Radiation Emergency Team shall consist of the Results Engineer, and the Rad-Chem Supervisor as senior members. The remaining members will be, the Rad-Chem Assistant plus all personnel of the Rad-Chem group, during normal work shift.

The Radiation Emergency Team will make an immediate investigation of all emergencies and determine the extent and magnitude of the radiological hazard which may be involved on site and surrounding the site. The Radiation Emergency Team will then direct the appropriate course of action based on its estimate of the situation.

- b. The On-Call Radiation Teams, five (5) in number, consisting of the Results Engineer, the Rad-Chem Supervisor, the Rad-Chem Assistant, the Reactor Supervisor and Reactor Assistant; as senior members, one for each team. The remaining members will consist of other plant personnel. The designated teams will act as or for the Radiation Emergency Team when called upon. In the event of a major accident, every effort will be made to notify the Radiation Emergency Team.
- c. During use of the Site Emergency Center, the senior member of the Team will act as the SEC coordinator.

8

B. Emergency Classifications

1. Local Emergency

A local emergency is defined as a fire or personnel injury non-radiological or involving radiation/contamination and radiation release, either gaseous, liquid or solid, occurring in one building or area. However, it must be remembered that the local emergency could expand to a site or off-site emergency, depending on further consequences.

a. Non-Radiological Industrial Accidents

Injuries which occur in a controlled area which do not involve radiation or contamination as determined by Rad-Chem group or personnel injuries in a clean area are to be handled as per

instructions in the Non-Radiological Industrial Accident Procedure. Action Level #1 covers those minor accidents for which professional medical attention is not required. Action Level #2 covers those accidents serious enough to require professional medical attention. Classification of the seriousness of the accident will be determined by the Rad-Chem Supervisor or his authorized representative.

b. Personnel Injury Involving Radiation or Contamination

All controlled area injuries will be handled as though they involved radiation/contamination until evaluation by the Radiation Emergency Team directs otherwise. When severe injuries are present, medical attention will take precedence over contamination controls and also emergency medical treatment of inhalation will take precedence over decontamination or wound treatment. Available personnel will administer first aid until qualified medical assistance can be obtained. All necessary measures needed to prevent the spread of contamination before moving the injured individual to the hospital will be accomplished according to the procedure for hospitalization of radiation casualties.

The area where the accident occurred and the injury will be surveyed to determine if contamination was coincident with the injury and if so, the Radiation Medical Consultant for the Kewaunee Plant will be notified.

There are two (2) action levels for personnel injuries involving radiation/contamination as outlined in the procedures. Action Level #1 for Minor Injury and Action Level #2 for Major Injuries

where movement may be hazardous or not possible. Follow instructions as outlined in Emergency Procedures.

c. Excessive Personnel Exposure

Every effort will be made to determine if an abnormal exposure indication is valid. Exposures that are excessively high or low in respect to the work the individual has been doing will immediately be investigated and evaluated by the Rad-Chem group. This may well require bio-assay, surveys, review of work assignments, etc. If the exposure is valid and excessive, medical consultation will be required. Any exposure in excess of 10 CFR 20 limits will be reported to AEC as outlined in 10 CFR 20 Section 20.403 and 20.405.

d. Fire Emergency

Report the emergency and location, type and intensity of the fire immediately to the control room via nearest communication. Then attempt to extinguish fire while help is being sent to the fire area.

Control room personnel will sound fire alarm and send the Radiation Emergency Team to the fire area. For non-radiation emergencies, personnel should use common fire-fighting procedures. Available operating personnel will be directed by control room personnel to proceed with adequate fire-fighting and protective equipment to the scene of the fire. If there is danger of air particle contamination, the area will be evacuated and fire fighters will wear respirators. Air samples will be taken to determine airborne activity. Following the emergency, the area will be surveyed, personnel will be monitored, and work resumed after approval of the Rad-Chem Supervisor as warranted.

Emergency fire equipment will be checked at three month intervals as directed by the Maintenance Supervisor. He should be notified whenever equipment is used.

e. Radioactive Spills

Containment control measures will be put into effect immediately following the accidental release of radioactivity. If release is in a controlled area, the area will be roped off to prevent further spread of radioactive materials and/or the unnecessary exposure of personnel in surrounding areas. The Rad-Chem group will supervise the movement of personnel into, out of, and around the area. They will also assume responsibilities for monitoring and the direction of clean-up. Personnel will not be allowed to leave the area until they are deemed free of contamination, unless it presents a personnel hazard to remain in the area. In such a case, they will move to the nearest safe location to await clearance.

If the spill is not in a controlled area, monitoring will be initiated to determine the extent and degree of hazard involved within the limits set for environmental exposure.

Radioactive spills fall into three (3) categories as follows:

#1 - Liquid or dry which do not present a radiation hazard to personnel

#2 - Liquid or dry which do present a radiation hazard to personnel

#3 - Spills which potentially involve airborne radioactivity

All radioactive spills will be treated as potential airborne hazards until evaluation by Rad-Chem directs otherwise.

f. Radioactivity Release to Unrestricted Areas

The concentrations of radionuclides released to the environment from the plant are governed by the limits set in Appendix B, Table II of 10 CFR 20. Radioactive waste disposal will be made only by permit of the Rad-Chem Supervisor or his alternate with approval by the Shift Supervisor.

Any release in excess of these limits as indicated by plant monitoring or otherwise determined will require actions as outlined in the off-site emergency procedures.

The Radiation Emergency Team will investigate and determine the extent of the release and whether the health and safety of the public is endangered, while the Shift Supervisor will supervise the necessary operations to terminate this release.

2. Site Emergencies

If it is determined by fixed and/or portable radiation monitoring devices that accidental radioactivity release or increase in radiation levels may constitute a serious radiation hazard to plant personnel, the evacuation alarm will be sounded and all non-essential personnel will be evacuated to the Site Emergency Center in their own personal cars. In the event of a site evacuation, an exclusion area will be set up including the area inside the security fence and all personnel in this area can be evacuated to the Site Emergency Center prior to receiving a whole body dose of 25 rem. The reactor plant will be shut down in accordance with established emergency procedure. Respirators will be available, as will required instrumentation to assess control room exposure. When the control room integrated exposure approaches 25 rem, it too will be evacuated.

These personnel will be taken to the Site Emergency Center. A vehicle will be made available for this purpose. Plant personnel will function under special assignments and instructions to insure that the integrity of the site is maintained and communications with the control room are maintained.

The evacuation of the area will be under the direction of the Radiation Emergency Team which will determine the need for evacuation, the evacuation route to be followed, and the safest location for visitors, and non-essential personnel.

The extent and seriousness of the accident and the radiation hazard will be initially determined by the control room operating personnel using plant radiation monitoring equipment. In the event the accident is of proportion great enough to endanger general public health and safety, the Off-Site Emergency Plan will be initiated by the Plant Superintendent or his designated alternate.

The normal evacuation route out of the operating area will be via the macadam road leading to state highway 42 by foot or private automobile. Each person will retain his personal monitoring devices.

The clerk will take with him all employee TLD badges and dosimeters in the guard house not being used at the time of the accident. He will leave one TLD badge in the guard house as an area badge.

Upon being alerted, the Radiation Emergency Team will proceed to the Monitor Room, establish communications with the control room and determine, from what is known, the present status of radiation at the facility. With the senior member in constant communication, the junior member will organize the team to assist evacuation and obtain

portable instruments, items of protective clothing and equipment to be taken to the Site Emergency Center. The senior and junior members will then proceed to the Site Emergency Center after making an estimate of the plant situation and measuring the radiation level at the security fence respectively. After assembly at the Site Emergency Center, the team will continue to measure radiation levels at the boundary of the existing exclusion area and ensure adequate communication is established with the Control Room personnel. Team personnel will also be dispatched from the Site Emergency Center to change on-site air filters and collect soil, vegetation, and water samples in the vicinity. All other personnel and their autos will be sent home if both are free of contamination. If sent home, personnel shall not publicize the incident and shall refer all reports to the Plant Superintendent. Employees should inform questioners that official announcements will be made in due course.

The decision for contacting the Coast Guard at Two Rivers, Wisconsin, and the request for a patrol craft to evacuate all boats within a 3/4 mile radius of the plant on the lake will be made by the Plant Superintendent or his authorized representative, as will all calls asking for assistance from the State and Local law enforcement agencies, the AEC, and the Municipal Hospital in Two Rivers, Wisconsin.

Radiation monitoring will continue at the boundary of the existing exclusion area to insure that radiation levels are less than 2 mr/hr. Residents will be evacuated if it becomes apparent that they may accumulate a dose greater than 100 mrem in one week.

Four (4) traffic control points on the site boundaries will be set up and maintained to regulate vehicle flow in and out of the area. These will be at a point one mile from G on Town Road (6) in the North; at a point one mile from G on State Highway 42; at a point 0.6 mile west of 42 on Town Road (4); and at a point one mile south of the plant on 42.

3. Off-Site Emergencies

The off-site evacuation plan will be put into effect when the analysis of existing information from plant monitoring and monitoring at access points and/or exclusion area boundaries shows that a hazard exists to the surrounding community. Assistance in the case of major emergencies will be obtained from the AEC Chicago Branch; State Police Barracks in Fond du Lac, Wisconsin; the Kewaunee Sheriff's Department in Kewaunee, Wisconsin; the Manitowoc Sheriff's Department in Manitowoc, Wisconsin; and the Coast Guard Station, Two Rivers, Wisconsin. The name, address and telephone number of persons to be notified is maintained in the control room and in the Site Emergency Center.

The senior supervisor on duty is in charge until relief is obtained from qualified plant management personnel. Final decisions on the need for assistance and public agencies concerned will be made by the Plant Superintendent or authorized representative.

Off-site evacuation of the surrounding community will be requested of the State Police, Kewaunee and Manitowoc Sheriff's Departments. The following access roads will be barricaded:

South - U S Highway 42 from county road BBB north

junction of town road #1 and town road #2 north

West - junction of BBB and town road #2 east

junction of BB, BBB and town road #3 east and north

junction of town roads #3 and #4 east
junction of town roads #3 and #5 east
junction of G and town road #3 east
North - junction of G and State Highway 42 south
junction of G and town road #6 south

Upon arrival of the state police, an evacuation of residents from the area noted in Figure II-4 as off-site evacuation will begin. The general public evacuation will cover an area of approximately 14 square miles. Within this area are approximately 50 occupied residential/business dwellings and some trailers located at the Radar Trailer Park 0.7 miles west of BBB on BB. Figure II-4 is a map of the Evacuation Area with road designations.

The Coast Guard will be requested to clear/evacuate an area approximately two miles in radius from the plant of all pleasure craft and general public in the beach area. They will also be requested to maintain a watch over this area to prevent the public from entering the area once it is cleared.

Personnel assisting with the evacuation of the public will counsel them that they are in no immediate danger but are being moved for their own safety; and that they will be permitted to return as soon as the danger has passed and there is no threat of contamination to their homes or property.

Radiation levels will be continuously monitored during the period of an off-site evacuation to determine the extent of the evacuation necessary and the time allotted for an orderly evacuation of residents.

C. Emergency Control

Kewaunee emergency activities are controlled from two locations:

1. Control Room (Shift Supervisor In Charge)

a. The control room has been designed to remain habitable under incident conditions. It is provided with the following communication facilities: telephones, Gai-Tronics intra-plant phone system, sound system, and a short-wave radio communications system.

b. All on-site activity shall be directed from the control room.

2. Site Emergency Center (Site Emergency Director In Charge)

a. A Site Emergency Center has been designated for activation in the event of a site or off-site emergency which cannot be administered from the control room. The Site Emergency Center will serve as a base of operations for all surveillance and supporting services. The Center is located on the western edge of the plant boundary. Located at the Center are emergency radiological monitoring equipment, supplies, and telephone facilities. Telephone lines run both North and South from the plant to provide separate connections to two independent switchboards.

b. The Site Emergency Center will be staffed by qualified members of the plant staff and such other qualified personnel as may be designated by plant and corporate management.

The Radiation Emergency Team will originate, direct and coordinate action from the Site Emergency Center, as will all necessary outside organizations providing emergency assistance.

c. Equipment Located at the Site Emergency Center

Equipment located at the Site Emergency Center will include: respirators, protective clothing, shoe covers, TLD's beta-gamma high-range dosimeters, first aid kit, miscellaneous signs and tags,

Plastic bags, high-range dose-rate meter, G-M survey instruments, portable battery-operated or gasoline air sampler, rope, stretcher, absorbent paper, tape, plastic bottles for sample collection, decontamination soap, towels, hot water heater, extra set of critical prints including isoplots, walkie talkies, desks, and spare tools.

8

D. Emergency Actions (Kewaunee)

The on-duty Shift Supervisor, upon being informed of an emergency, shall immediately announce the type and location on the plant public address system and shall evaluate the condition and classify the emergency as local, site, or off-site.

1. Immediate Action (for all classifications and emergencies)

- a. Upon discovery, all emergency conditions shall be immediately reported to the control room.
- b. Control room personnel shall announce the location and nature of the emergency on the public address system and sound the plant evacuation alarm if required.
- c. The plant shall be placed in a safe condition as warranted by the emergency.
- d. Appropriate action, where possible, should be taken by persons in the immediate area to limit the extent of the incident.

2. Local Emergency Actions

- a. All available plant personnel, not assigned to the shift operating crew proceed to their designated assembly area.

- b. The Site Emergency Director shall direct all actions necessary to bring the emergency under control. During back shifts and weekends, the Shift Supervisor assumes the role of Site Emergency Director until relieved by an On-Call Site Emergency Director.
- c. The Radiation Emergency Team shall be directed to proceed to the emergency area to evaluate the extent and magnitude of the emergency and determine if radiation hazards are involved and report its findings to the Site Emergency Director or the control room.
- d. The Site Emergency Director shall notify plant management and other company personnel as required.
- e. When the emergency condition has been controlled and the results evaluated, the plant and emergency equipment will be restored to normal.

3. Site Emergency Actions

The table below lists the actions and responsibilities of plant personnel during a site emergency.

<u>Plant Personnel</u>	<u>Shift Supervisor</u>	<u>Radiation Emergency Team</u>	<u>Site Emergency Director</u>
1. Personnel on site (other than operating) proceed to the assembly room in the Administration Building, establish communications with the Control Room and prepare to render assistance.	1. Evaluate the emergency and determine the severity of the incident and commence proper actions.	1. Proceed to Monitor Room to assemble personnel and equipment and establish communication with control room.	1. Assume command at the Control room.
2. Off-site personnel coming to the plant proceed to the Site Emergency Center for instructions.	2. Request Site Emergency Director (SED) to dispatch RET to scene of emergency to evaluate extent and magnitude of the emergency and report findings.	2. Proceed to the emergency area upon direction of the SED.	2. Direct RET to the emergency area and determine whether control should be transferred to the Site Emergency Center (SEC). Dispatch one person to SEC to provide direction to off-site personnel arriving at the SEC.
3. Perform functions as directed by the SED.	3. Determine number of people on site, especially on backshifts, weekends, and holidays.	3. Report findings to the control room and the SED.	3. Maintain contact with control room and SEC and stay abreast of developments.
	4. Notify Plant Superintendent or his designated alternate. Request additional assistance as required.	4. Direct survey of all personnel for possible exposure and contamination.	4. Account for all plant personnel and visitors and establish personnel control to restrict access to site.
	5. Direct actions necessary to bring emergency under control.	5. Prepare to survey site boundary.	5. Provide any personnel or assistance to Shift Supervisor as required.

6. Supervise collection of emergency data.
7. Organize evacuation detail if necessary.

4. Off-Site Emergency Actions

The table below lists the actions and responsibilities of plant personnel during the off-site emergency.

<u>Plant Personnel</u>	<u>Shift Supervisor</u>	<u>Radiation Emergency Team</u>	<u>Site Emergency Director</u>
1. Personnel on site, other than operating, proceed to the SEC and establish communications with the control room and prepare to render assistance.	1. Note meteorological conditions and evacuate on-site personnel to SEC, except operating personnel and RET.	1. Proceed to the Monitor Room to assemble personnel and equipment and establish communications with the control room.	1. Proceed to the SEC and assume command and establish communications with the control room.
2. Off-site personnel coming to the plant proceed to the Site Emergency Center for instructions.	2. Determine cause of off-site emergency.	2. Prepare to commence monitoring at down wind areas.	2. Determine the adequacy, with respect to safety, of the assembly area at the SEC.
3. Perform functions as directed by the SED	3. Initiate actions necessary to limit consequences of the incident.	3. Make survey and collect monitoring data at affected areas.	3. Obtain from control room status of plant conditions and meteorological data.
	4. Notify Plant Superintendent or his designated alternate. Request additional assistance as required.		4. Evaluate RET data.
			5. Advise company management, State Police, Fire Dept., Public Health, Hospitals, and AEC of off-site radiological conditions as appropriate.

6. Coordinate emergency operations between WPS assistance groups and governmental agencies.
7. Account for all plant personnel, visitors included, and establish control to limit access to site.
8. Support in-plant recovery operations.
9. Supervise collection of all data and enter in appropriate logs.

E. Notification of Off-Site Support Groups

1. Wisconsin Public Service has agreed to notify the following organizations of any emergency involving the general public:
 - a. Wisconsin State Department of Health and Social Services, Division of Health, Section of Radiation Protection
 - b. Wisconsin State Police
 - c. U S Coast Guard
 - d. U S Atomic Energy Commission
 - e. Kewaunee County Sheriff's Department
 - f. Manitowoc County Sheriff's Department
2. When plant conditions indicate circumstances which present a potential radiological hazard to the public, WPS management and the appropriate governmental agencies shall be immediately notified and a request for assistance shall be made.
 - a. The Shift Supervisor will notify the Plant Superintendent and company management at the Green Bay office during the normal working period. Notification of the regional AEC office at Chicago will be determined after assessment of the incident has been made.
 - b. During back shifts, week-ends, and holidays the occurrence of the incident will be reported to the Radiation Duty Officer, Chicago - AEC informing him that:
 - 1) An incident has occurred, and at present no radiation hazard exists to the public, or
 - 2) An emergency situation does exist and immediate assistance is required.
 - c. The Shift Supervisor will notify the Wisconsin State Police and the Wisconsin State Department of Health.
 - d. If medical support is necessary, the Shift Supervisor will notify the proper medical consultant whose telephone number is listed in Table II-1.

- e. The Fire Department will be notified in the event that their assistance is required.
- f. Figure II-3 shows the order in which outside agencies will be notified of any incident at Kewaunee which may require assistance.
- g. Requests for outside assistance will be based upon the criteria given in Section IV.

F. Emergency Actions (Off-Site Support Group)

1. Action by State Police

The Wisconsin State Police at Fond du Lac will be notified immediately of the general emergency situation at the Kewaunee Plant and advised of the areas affected. Upon notification, the State Police will:

- a. Initiate the emergency notification system established with the local Sheriff's Department.
- b. Set up road blocks along highways and entrance roads to the plant and establish police control over areas immediately surrounding the plant site.
- c. Contact the Site Emergency Director at Site Emergency Center.
- d. Prepare to institute any additional protective measures for the public as deemed necessary by the Site Emergency Director, Wisconsin State Department of Health, and the AEC. This may require evacuation of residents nearby.
- e. Prepare to assist the U S Coast Guard as required to keep traffic away from the nearby beaches.

2. Action by Chicago Operations Office - AEC Personnel

The Atomic Energy Commission will be notified of the general emergency situation at the Kewaunee Plant via the Radiation Officer

Chicago. Upon notification, the AEC will:

- a. Dispatch a team of radiation safety specialists to assist in the evaluation of the situation and provide state and local authorities with specific technical guidance.
- b. Establish contact with Kewaunee plant management through the Site Emergency Director.

3. Action by Wisconsin State Department of Health and Social Services, Division of Health, Section of Radiation Protection.

The Wisconsin State Department of Health and Social Services, Division of Health, Section of Radiation Protection, upon being notified, will respond as follows:

- a. Dispatch radiological health personnel to the plant site as requested.
- b. Contact the Site Emergency Director (in charge of the Site Emergency Center) and evaluate the public health significance of the incident.
- c. Direct the activities of state field consultants and coordinate state activities so as to complement the Kewaunee surveillance activities or otherwise participate with off-site survey teams.
- d. Determine the need to initiate protective action for the public and initiate those actions required.

4. Action by Bureau of Radiological Health - Public Health Service

- a. Provide, upon request of the State Department of Health, emergency monitoring teams to review survey data, assist in off-site evaluations and advise on protective actions for the public.
- b. Provide, upon request of the State Department of Health, a

mobile laboratory, if available, and assistance in collecting and analyzing samples.

5. Action by Wisconsin Electric Power Company - Two Rivers, Wisconsin

A WEP mutual assistance plan is being formulated to substantially increase the ability of WPS to effectively control the emergency situation. This mutual assistance will take the following form:

- a. Engineering and technical services from the Wisconsin Electric Power Nuclear Operations and Engineering Departments.
- b. Emergency radiation surveillance and support teams from the Wisconsin Electric Power nuclear plants.

6. Action by Local Fire Department

Upon notification that the need exists for additional fire fighting personnel and equipment, the Site Emergency Director will notify the Kewaunee Fire Company. This station is located approximately 9 road miles from Kewaunee. Additional fire fighting support is available from Tisch Mills.

7. Action by Medical Support Groups

It is planned that on the spot first aid treatment would be given by plant personnel who have received an American Red Cross approved first aid course. Patients would then be transported to Two Rivers Municipal Hospital for further treatment.

8. Action by Civil Defense

In the event evacuation of area residents is required, the State Civil Defense agency will work with the State Police as requested in determining evacuation routes and relocation centers. They will also make the necessary arrangements for food, lodging and medical care of evacuees if necessary.

G. Security Plan Compatibility

The security program at Kewaunee is designed to deter, delay, and detect an intruder. The plant site is enclosed by a standard eight foot security fence topped by an 8-inch high barbed wire.

All gates to the fences are kept locked with the exception of the main gate which is kept closed and manned around the clock by a security guard stationed in the main gate guard house.

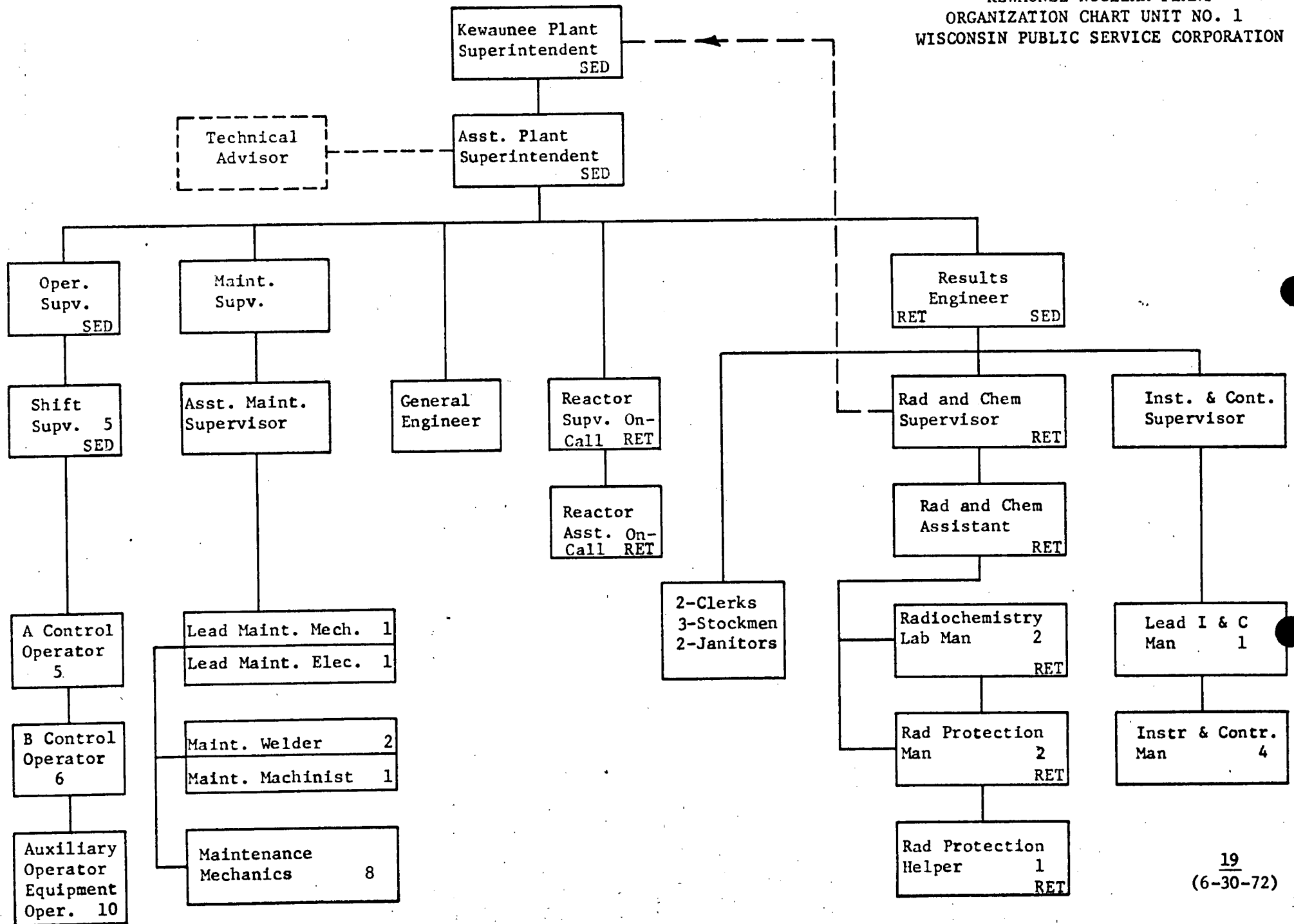
Support group personnel reporting to the plant during an emergency would assemble at the Site Emergency Center which is located outside of the security fence. Personnel assigned by the Site Emergency Director to enter the plant site would have to pass through the main gate which is guarded or locked so it is extremely unlikely than an unauthorized person would be able to enter the site undetected.

TABLE II-1

OFF-SITE SUPPORT GROUPS(Principal Officials by Title and Agencies)

<u>Off-Site Agency or Support Group</u>	<u>Title of Principal Official</u>	<u>Location</u>	<u>Telephone Number</u>
Medical	Chief Medical Consultant	Two Rivers, WI	793-2281
Medical	Alternate Chief Medical Consultant	Two Rivers, WI	793-2281
Wisc State Dept Health & Social Services	Chief-Div of Health Section of Rad Protection	Madison, WI	608/266-1791
Wisc State Police Dept	Commanding Officer, Dist. #3	Fond du Lac, WI	921-0442
USAEC Regional Coordinating Office	Radiation Duty Officer	Chicago, Illinois	312/793-7711
Environmental Protection Agency-Regional Office	Regional Coordinator	Chicago, Illinois	312/353-5250
U S Coast Guard Two Rivers Station	Officer-in-Charge	Two Rivers, WI	793-1304
Manitowoc County Sheriff Dept	Sheriff	Manitowoc, WI	684-4441
Kewaunee County Sheriff Dept.	Sheriff	Kewaunee, WI	388-3100
City of Kewaunee Fire Department	Fire Chief	Kewaunee, WI	388-2131
Tisch Mills Volunteer Fire Department	Fire Chief	Tisch Mills, WI	776-1100
Two Rivers Municipal Hospital	Hospital Administrator	Two Rivers, WI	793-1178
Civil Defense (Manitowoc County)	Director	Manitowoc, WI	684-3331
Point Beach Nuclear Power Plant	Manager - Nuclear Power Division	Two Creeks, WI	755-2321

KEWAUNEE NUCLEAR PLANT
 ORGANIZATION CHART UNIT NO. 1
 WISCONSIN PUBLIC SERVICE CORPORATION



EMERGENCY ORGANIZATION

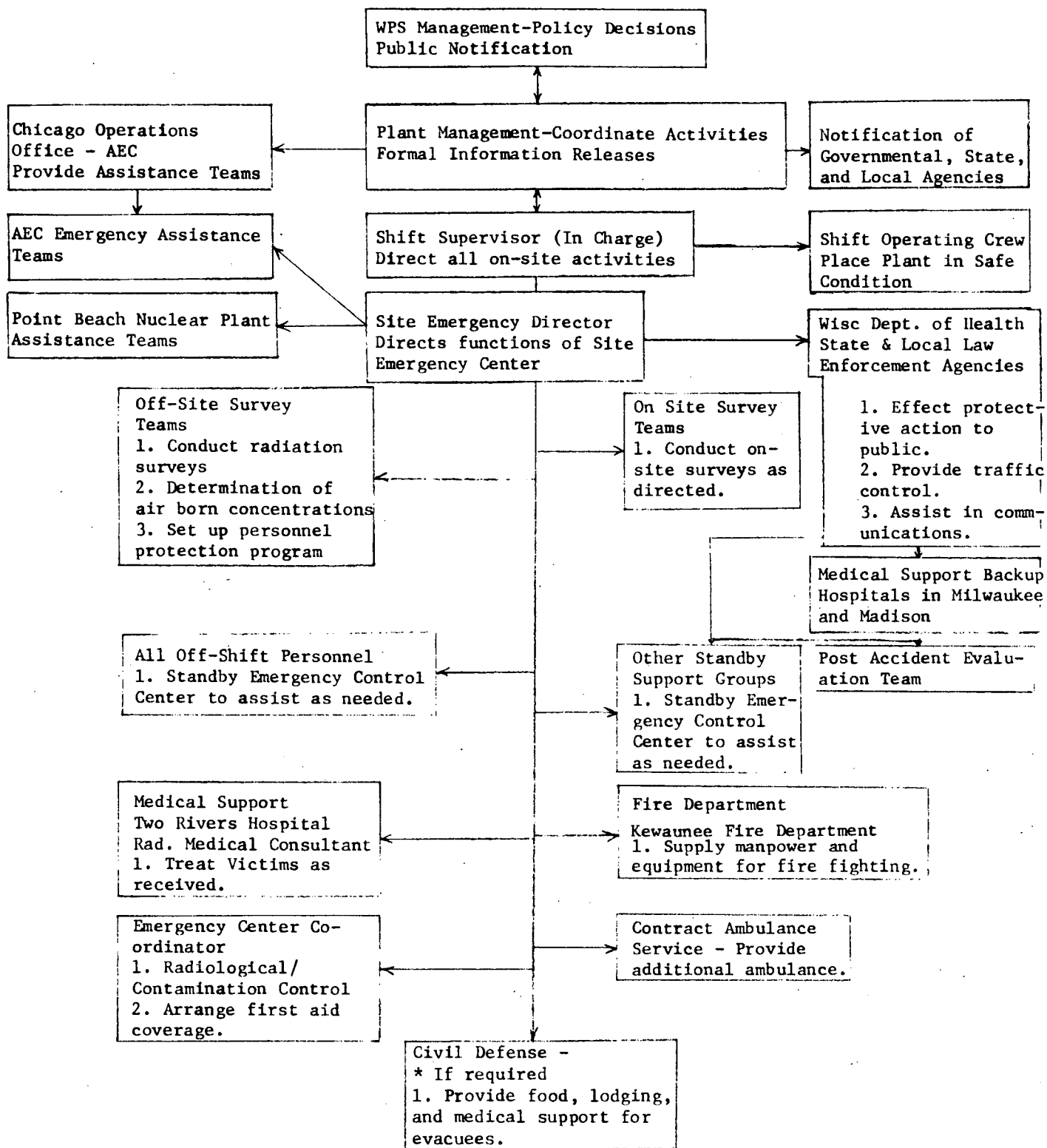
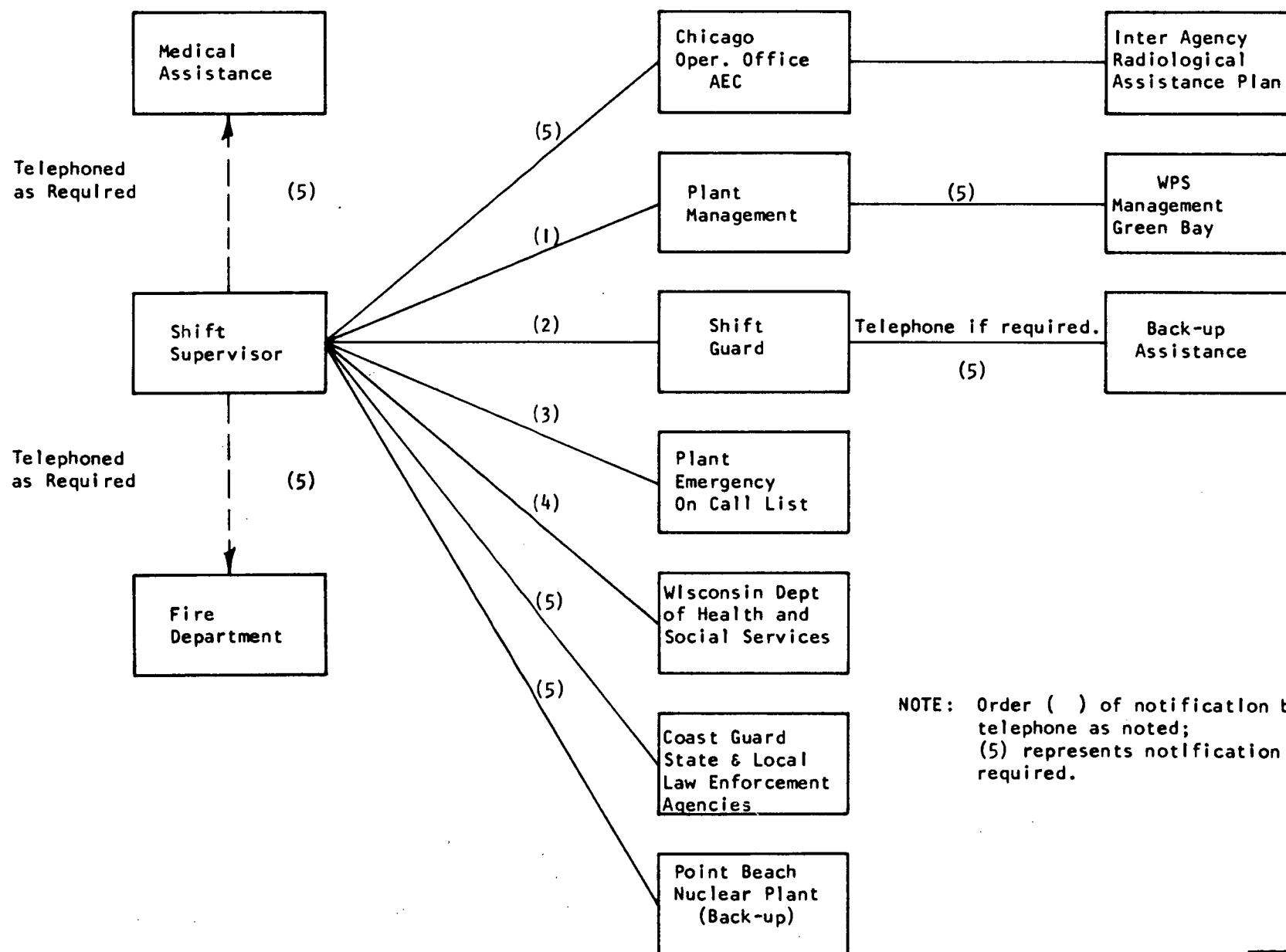


Figure II-2

NOTIFICATION ORDER IN EVENT OF INCIDENT

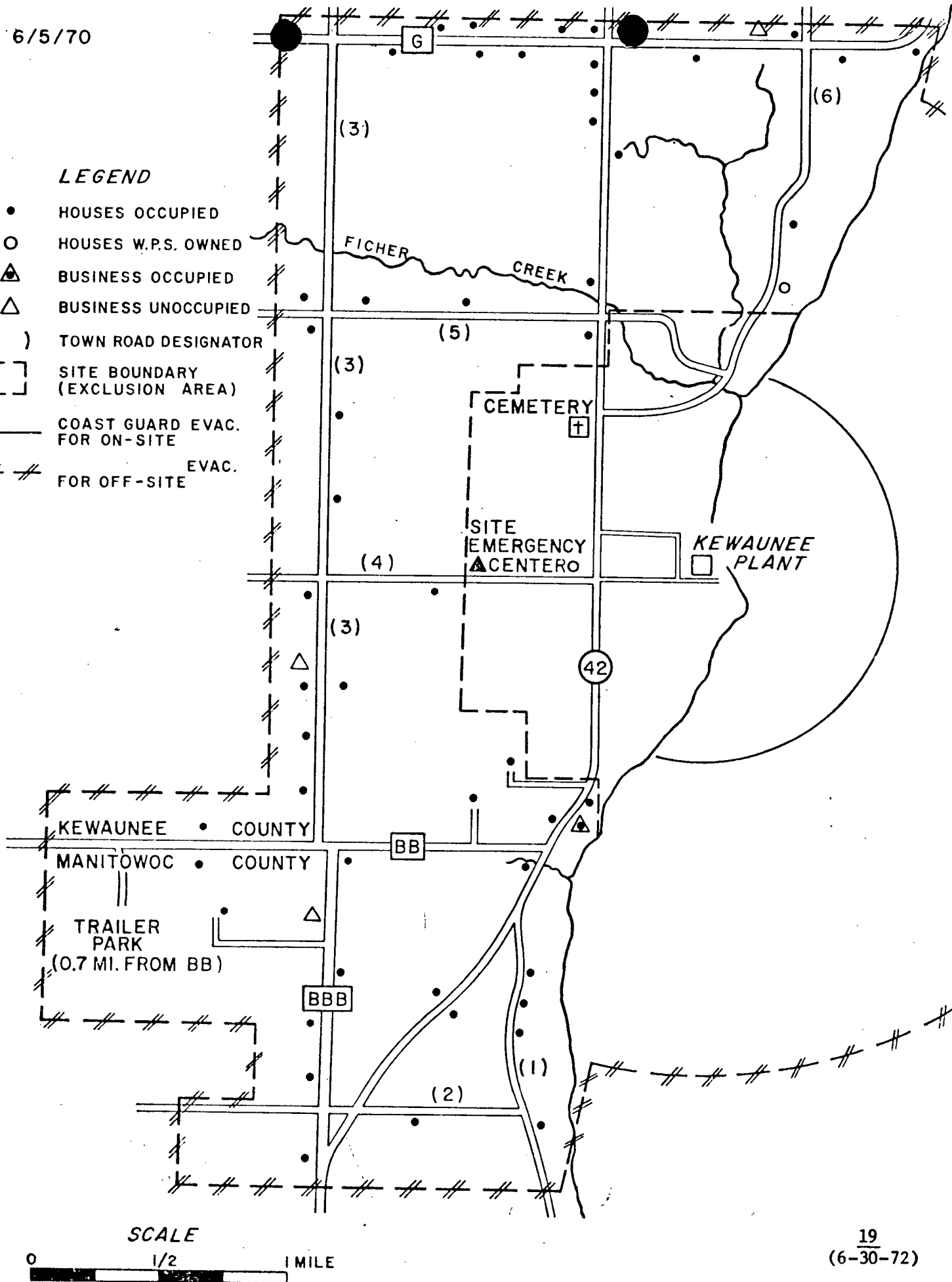


NOTE: Order () of notification by telephone as noted; (5) represents notification if required.

6/5/70

LEGEND

- HOUSES OCCUPIED
- HOUSES W.P.S. OWNED
- ▲ BUSINESS OCCUPIED
- △ BUSINESS UNOCCUPIED
- () TOWN ROAD DESIGNATOR
- [] SITE BOUNDARY (EXCLUSION AREA)
- COAST GUARD EVAC. FOR ON-SITE
- /// EVAC. FOR OFF-SITE



19
(6-30-72)

Figure G II-4

III. Coordination With Off-Site Support Groups

A. Letters of Agreement

Written agreements are presently being obtained from local, State, and Federal agencies and private medical support facilities with regard to the type of support that will be furnished to the Kewaunee Nuclear Power Plant in the event of an emergency. These agreements will be developed to ensure that there is a clear understanding of assigned responsibilities and that there will be proper coordination of activities in the event of an emergency. Appendix I contains copies of the letters of agreement with off-site support groups.

B. Special Qualifications of Off-Site Support Groups

Other persons or organizations, not employees of Wisconsin Public Service Corporation may be called upon for assistance. The special qualifications of these individuals and agencies are as follows.

1. Chicago Operations Office - Atomic Energy Commission

- a. Radiological Emergency Assistance Team consisting of specialists in radiation safety, medicine and public information.
- b. Also supported by instrumentation, communication and supply personnel.

2. Wisconsin State Department of Health and Social Services, Division of Health, Section of Radiation Protection.

- a. Organization contains field consultants and administrative consultants.
- b. Will furnish trained radiological personnel with monitoring equipment as requested.

3. Wisconsin State Police

- a. Experienced in providing area control, communications assistance

and direct handling of the local population including evacuation should it become necessary.

4. Wisconsin Electric Power Company

- a. A Nuclear Operations Staff is available within this organization consisting of personnel having extensive nuclear experience.
- b. Health Physics personnel and portable survey instrumentation from their nuclear plants would be utilized should the need arise.

5. Medical Consultant and Hospitals

- a. A licensed physician is available to Kewaunee as a Chief Medical Consultant. He has attended the United States Atomic Energy Commission Training Seminar on Medical Care and Treatment of Radiation Accidents.
- b. Arrangements for other medical specialists would be made through the Chief Medical Consultant as the need arose.
- c. The Chief Medical Consultant will work directly with the Staff Radiologist at the hospital.

6. Bureau of Radiological Health and Environmental Protection Agency

Upon request of the Wisconsin State Department of Health and Social Services, Division of Health, Section of Radiation Protection, both organizations would provide trained manpower to assist in reviewing survey data, off-site evaluations and advise on protective actions for the public.

7. Tisch Mills Fire Department

The Tisch Mills Fire Station is located less than five road miles from Kewaunee Power Plant. The Kewaunee Fire Department is located nine miles from the plant and is available to respond at our request.

8. Ambulance Service

WPS has provided an ambulance to be located on site at all times.

9. Civil Defense

Members receive periodic training in establishing relocation centers and providing medical, food and lodging arrangements for evacuees.

Backup communication support would also be provided by this group.

C. Public and Industrial Water Supplies

Lake Michigan is used as the source of potable water supplies in the vicinity of the site for the cities of Two Rivers (13 miles south) and Green Bay (intake at Rostok 11.5 miles north). No other potable water uses are recorded within 50 miles of the site along the lake shore.

All public water supplies drawn from Lake Michigan are treated in purification plants with steps consisting of chemical addition of alum, activated carbon, mechanical mixing, flocculation, sedimentation, filtration and disinfection. The nearest surface waters used for drinking other than Lake Michigan are the Fox River at a point 43 miles west and Lake Winnebago 40 miles west of the site.

Ground water provides the remaining population with potable supplies. Additional wells for private use are in existence throughout the rural region.