

237127A-E3600		
DESIGN SECTION APPROVALS		
SECTION	INITIALS	DATE
ELECTRICAL		
ELEC. CONTROL		
LIGHTING		
MECHANICAL		
INSTRUMENT		
WTC, P.S. & VTC		
STR. ANAL. & SUP.		
NUCLEAR		
HYDRAULIC		
STRUCTURAL		
SUPERVISOR		

ICCMS 100-2 CABINET ASS'Y  
(SHOWN WITHOUT DOORS)

**PRELIMINARY COPY**

WISCONSIN PUBLIC SERVICE CORPORATION  
KEWAUNEE NUCLEAR POWER PLANT - UNIT NO. 1  
CARLTON, KEWAUNEE COUNTY, WISCONSIN

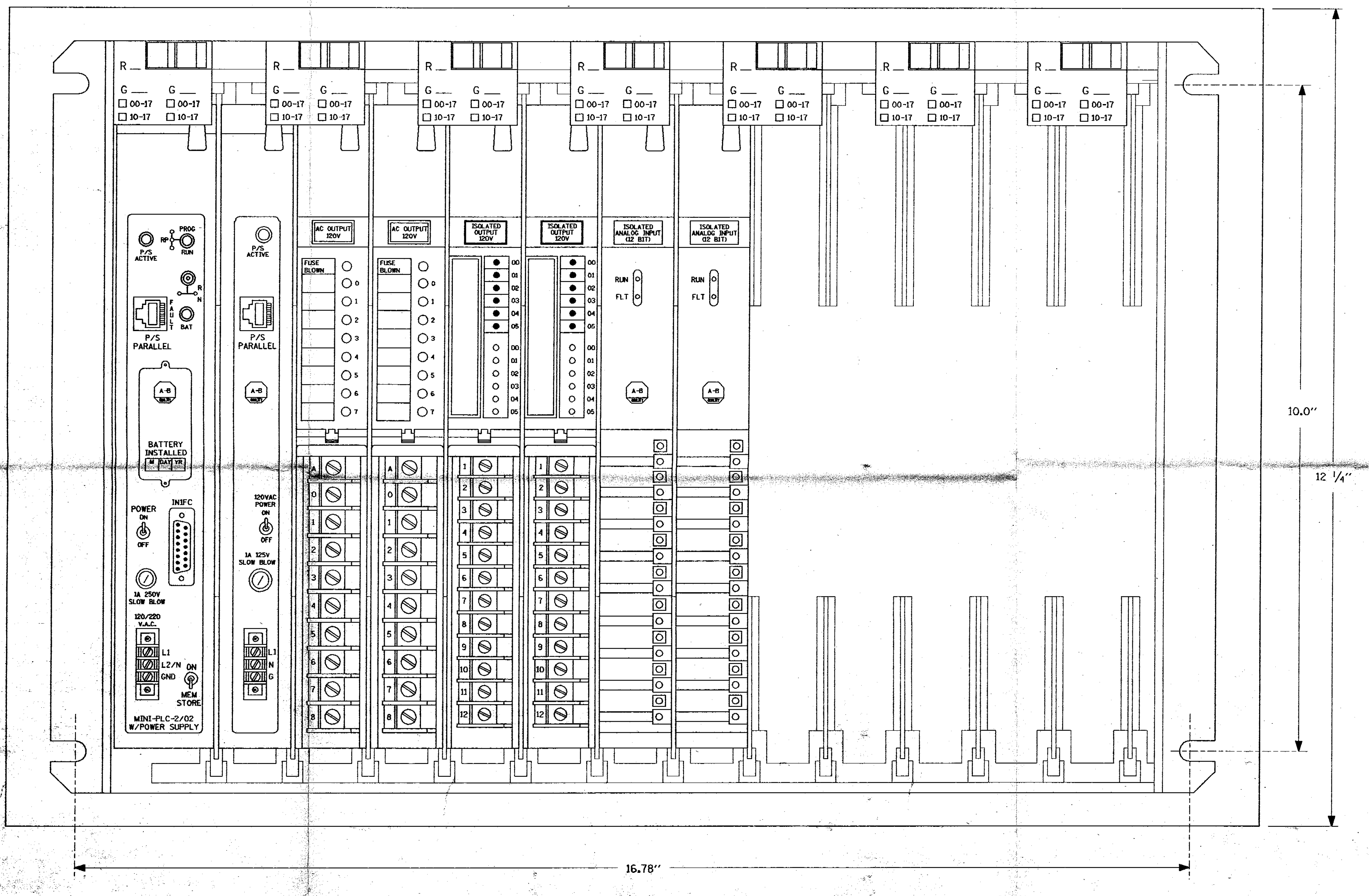
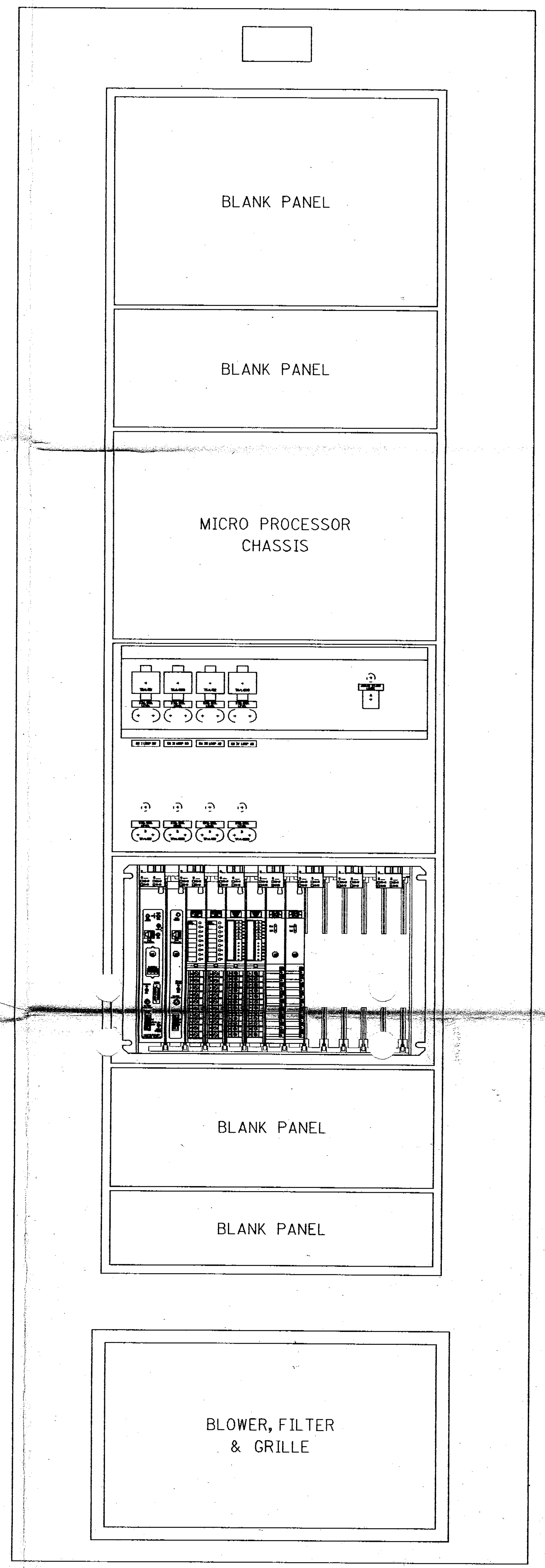
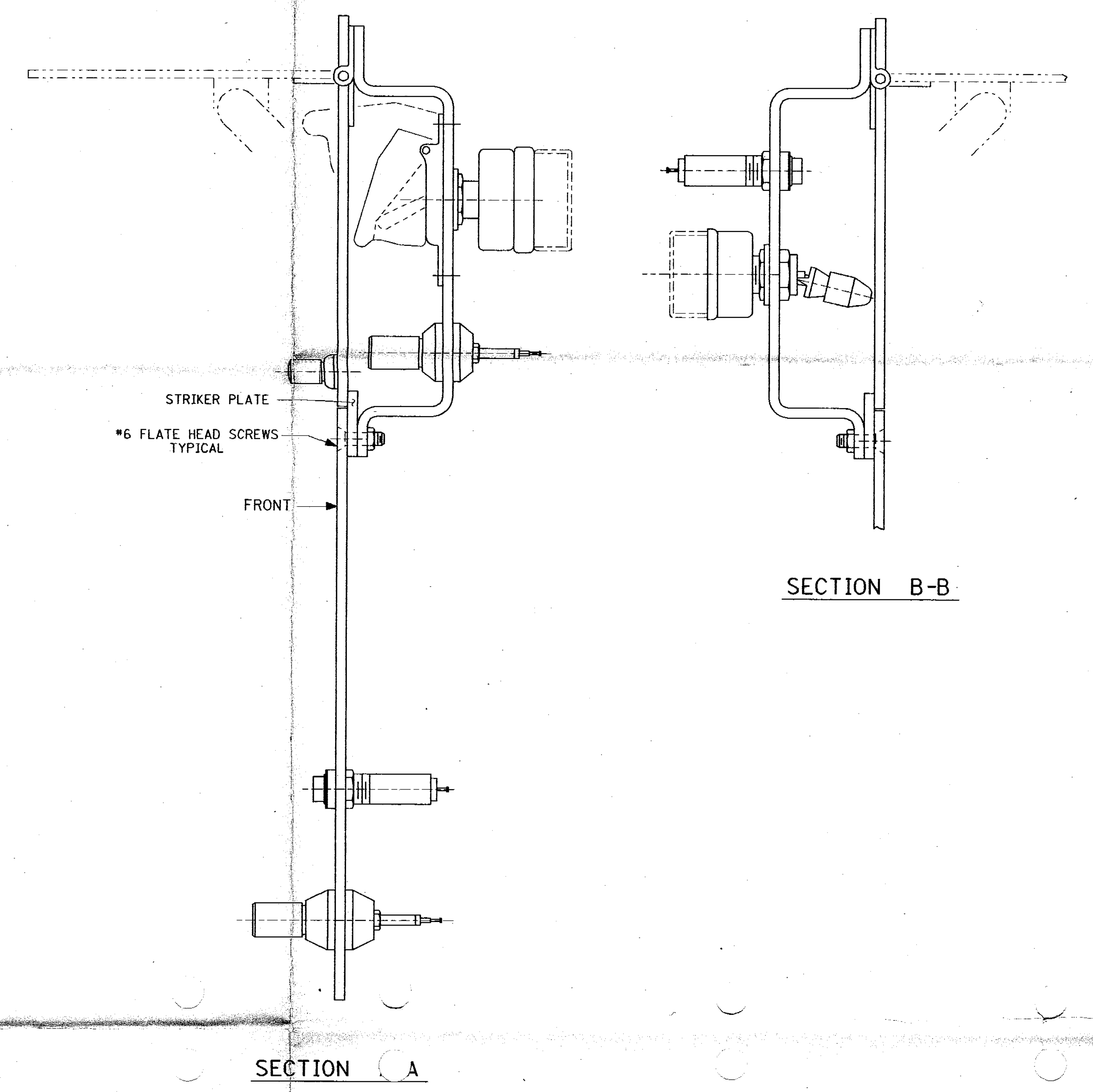
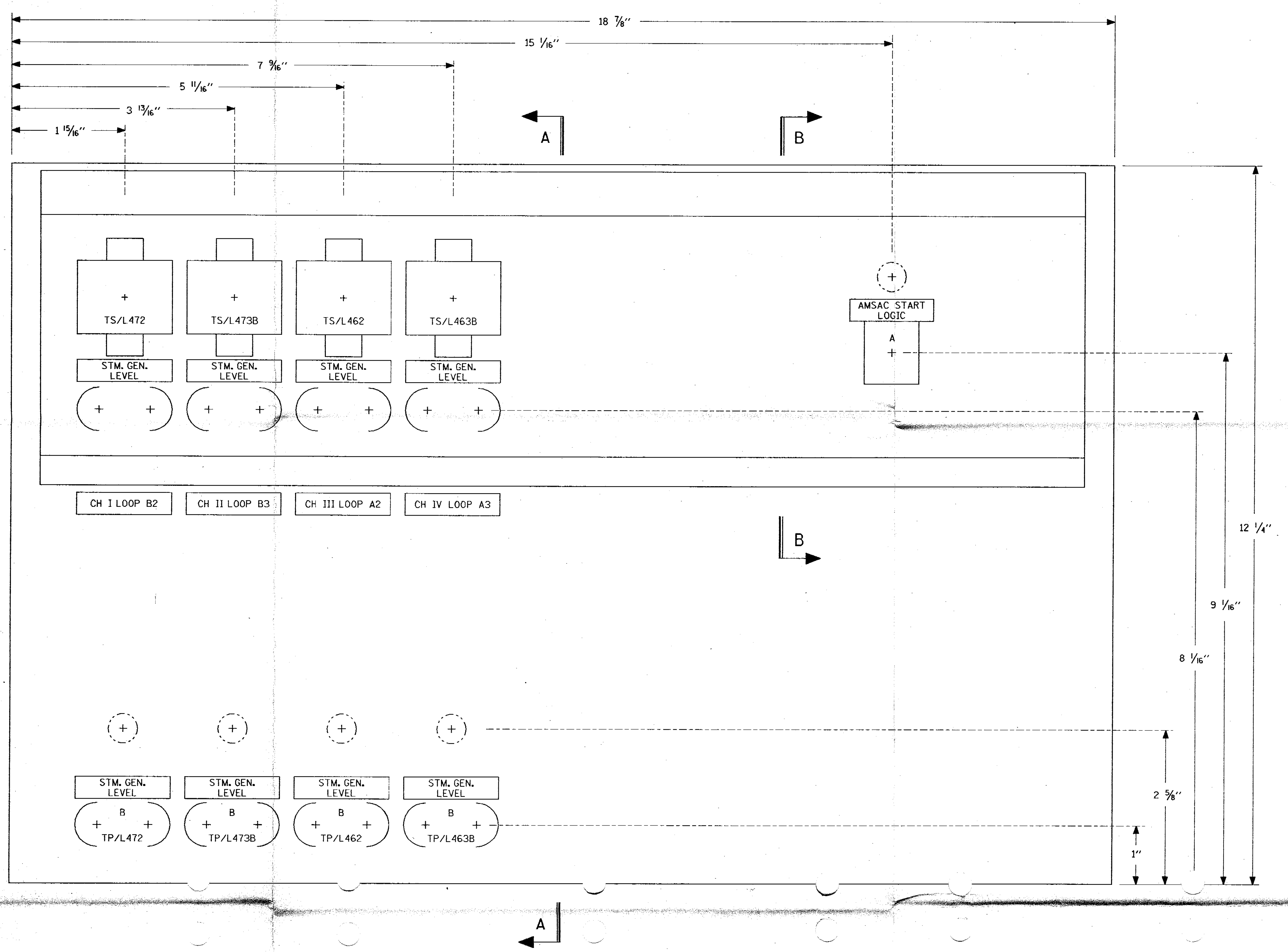
**AMSAC EQUIPMENT LAYOUT**

DESIGNED BY  
**WISCONSIN PUBLIC SERVICE CORP.**  
GREEN BAY, WISCONSIN

DESIGNED	AED
SCALE	AS SHOWN
APPROVED	
PROJ. & DWG. NO.	237127A-E3600
SHT. OF	

CADD

237127A-E3600  
APERTURE CARD



ICCMS 100-2 CABINET ASS'Y (SHOWN WITHOUT DOORS)

237127A-E3600		
DESIGN SECTION APPROVALS		
SECTION	INITIALS	DATE
ELECTRICAL		
ELEC. CONTROL		
LIGHTING		
MECHANICAL		
INSTRUMENT		
HTG. PLS. & VTC.		
STR. ANAL. & SUP.		
NUCLEAR		
HYDRAULIC		
STRUCTURAL		
SUPERVISOR		

**PRELIMINARY COPY**

WISCONSIN PUBLIC SERVICE CORPORATION  
KEWAUNEE NUCLEAR POWER PLANT - UNIT NO. 1  
CARLTON, KEWAUNEE COUNTY, WISCONSIN

**AMSAC EQUIPMENT LAYOUT**

DESIGNED BY  
**WISCONSIN PUBLIC SERVICE CORP.**  
GREEN BAY, WISCONSIN

DESIGN	DESIGNED	AED
RJS 12-17-88		
SCALE	CHECKED	
NONE		
APPROVED	PROJ. & DWG. NO.	SHT. OF
	237127A - E3600	

CADD

237127A-E3600

884167201