

HSA BUILDING FACT SHEET

Building Number / Name: 101 / Former Dormitory for National Park Seminary

Current Tenant / Use: Abandoned / None, Owned by Montgomery County

Original / Former Use: Hotel 1887 – 1894, National Park Seminary 1894 – 1936, National Park College 1936-1942

Date of Construction: 1887 (Taken over by WRAMC in 1942)

Construction Materials: Unknown

Total Sq. Footage: 224983

Renovation Status: Currently in the process of renovation by Montgomery County (previously renovated in 1892, 1894, 1898, 1905, 1912, 1916, 1918, 1924, and 1927 prior to coming under control of WRAMC)

Floors: 3

Current Building Status: Existing, abandoned

Sources of Information: (*References, Interviews*)

Document Reviews – CHAMMP Report, 1997; WRAIR HSA, 1997

Site Visit and Interviews – Interview with Mr. Burton

Radiological Data Summary (*RCOPCs, Impacted Room(s) / Area(s), etc.*):

- Radionuclides Used/Potential RCOPCs: Cd-109, H-3, presence of portable lead paint analyzer, gas chromatography
- Potentially Impacted Rooms: 1082
- Preliminary Dose Rate Survey (July 31, 2008): Not conducted due to building's inaccessibility

Current Radiological Status: No longer used by WRAMC; no longer used for RAM; No close-out documentation discovered, but per Mr. Burton, the only commodity ever briefly used in this building was a portable lead paint analyzer, which would not be applicable under Army Materiel Command (AMC) Guidance ("Radiological Surveys for Areas Where NRC-Licensed Commodities or Radium Containing Commodities Were Present," February 2004).

Site Visit Information: (*Date Toured, Site Contact, Security Issues*)

Site Contact – None

A drive-by tour of the building was conducted on July 31, 2008 by Paul Valentinelli, Mike Barsa, and Dave Burton. The building has been turned over to Montgomery County and is currently undergoing renovations.

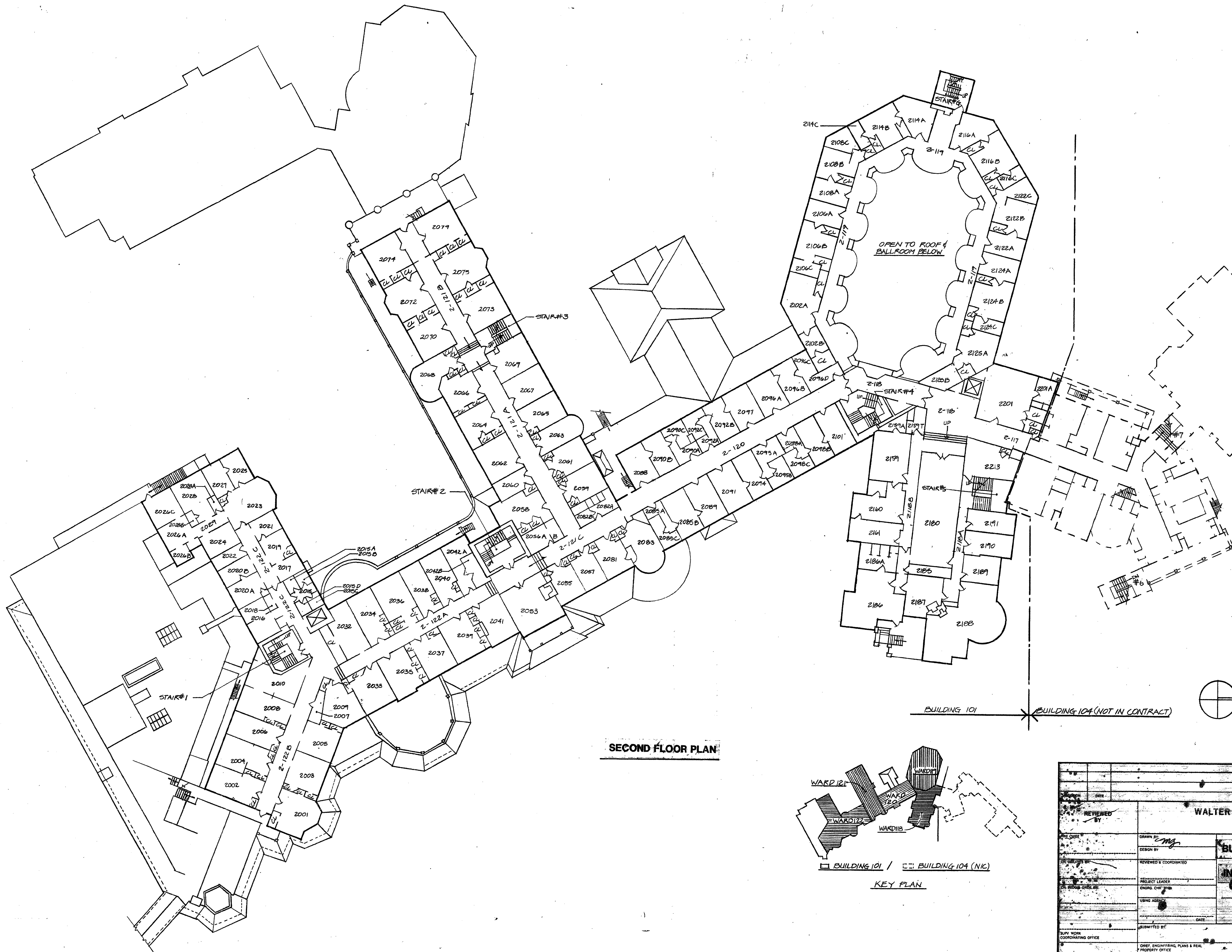
Preliminary MARSSIM Classification(s): Non-Impacted

Recommendations: No Further Action

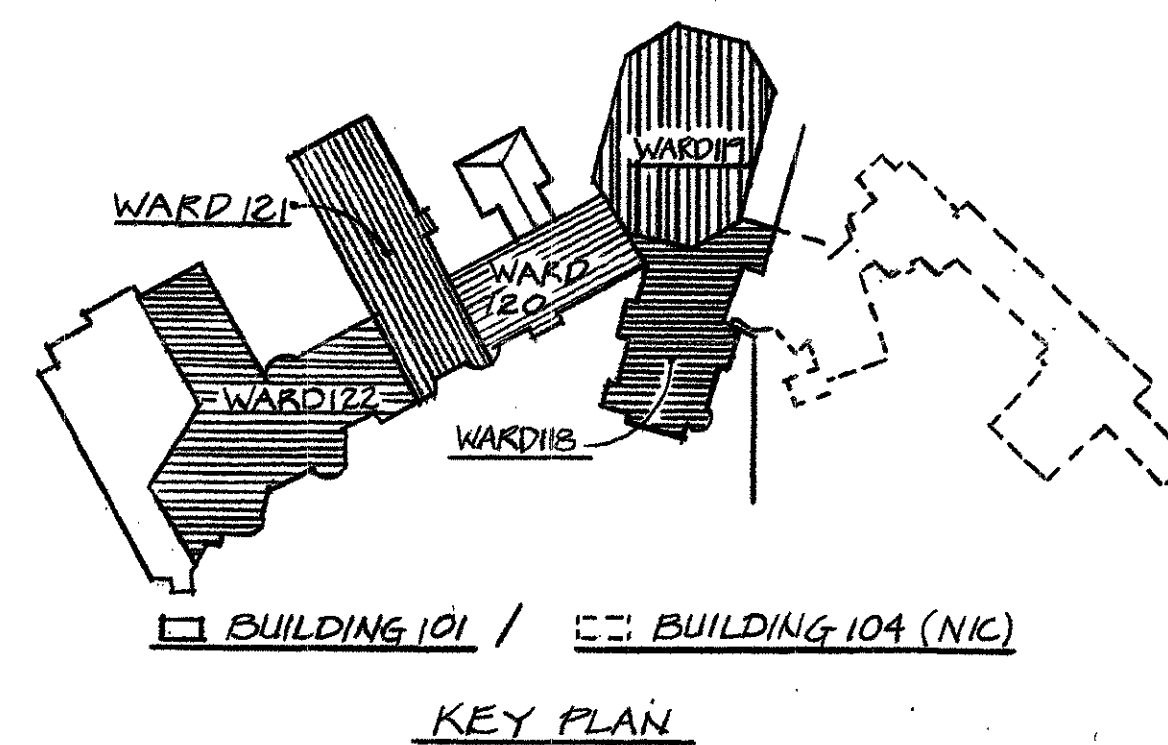
Historical Site Assessment (HSA)
Walter Reed Army Medical Center, Forest Glen Annex

Photograph(s) Taken: None, Renovation workers present

Floor Plan(s) / As-built Drawing(s): See attached



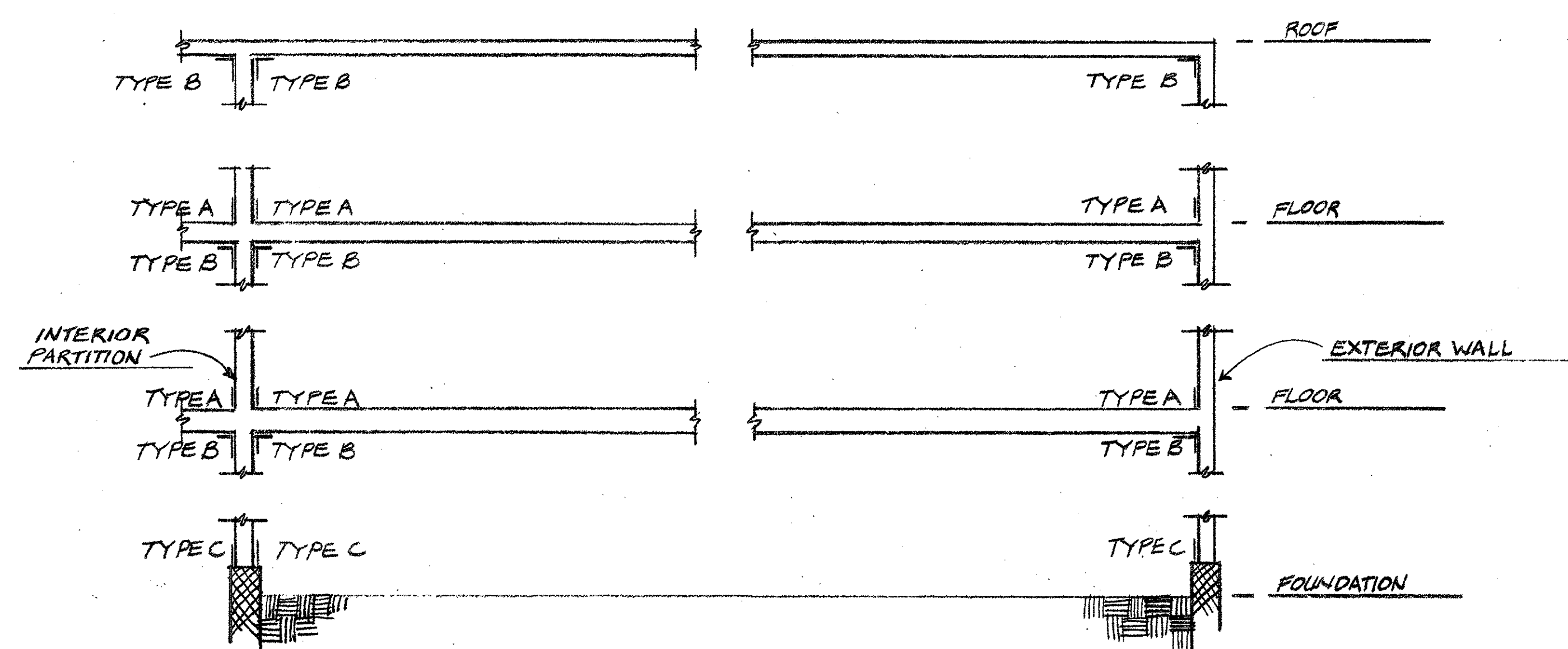
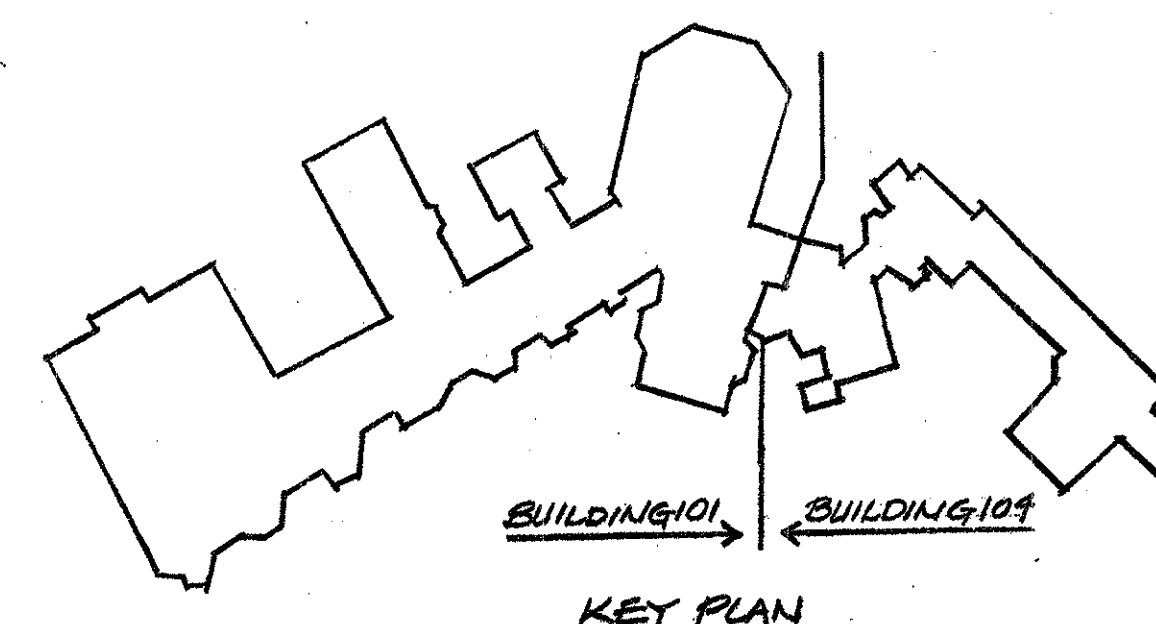
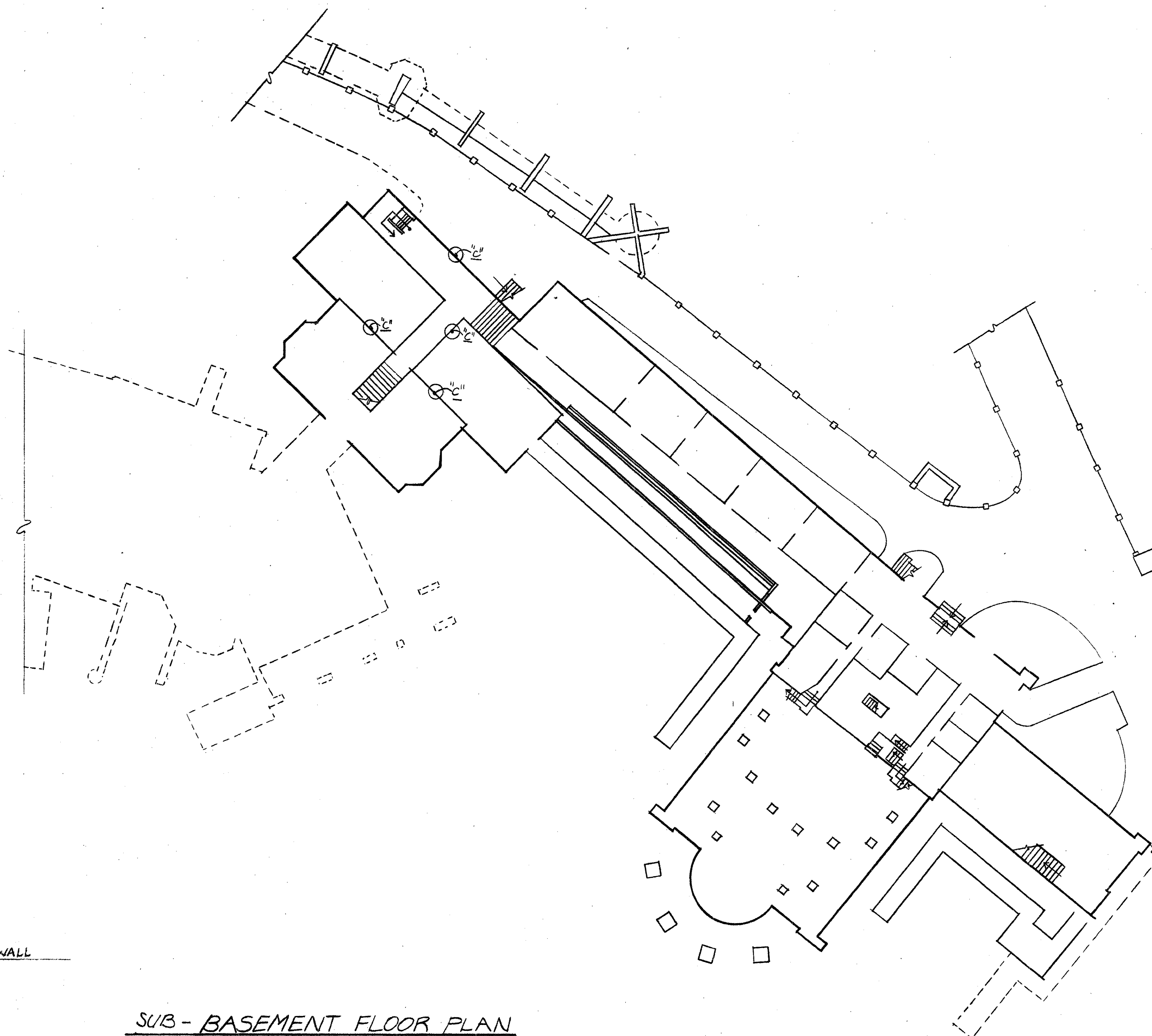
SECOND FLOOR PLAN

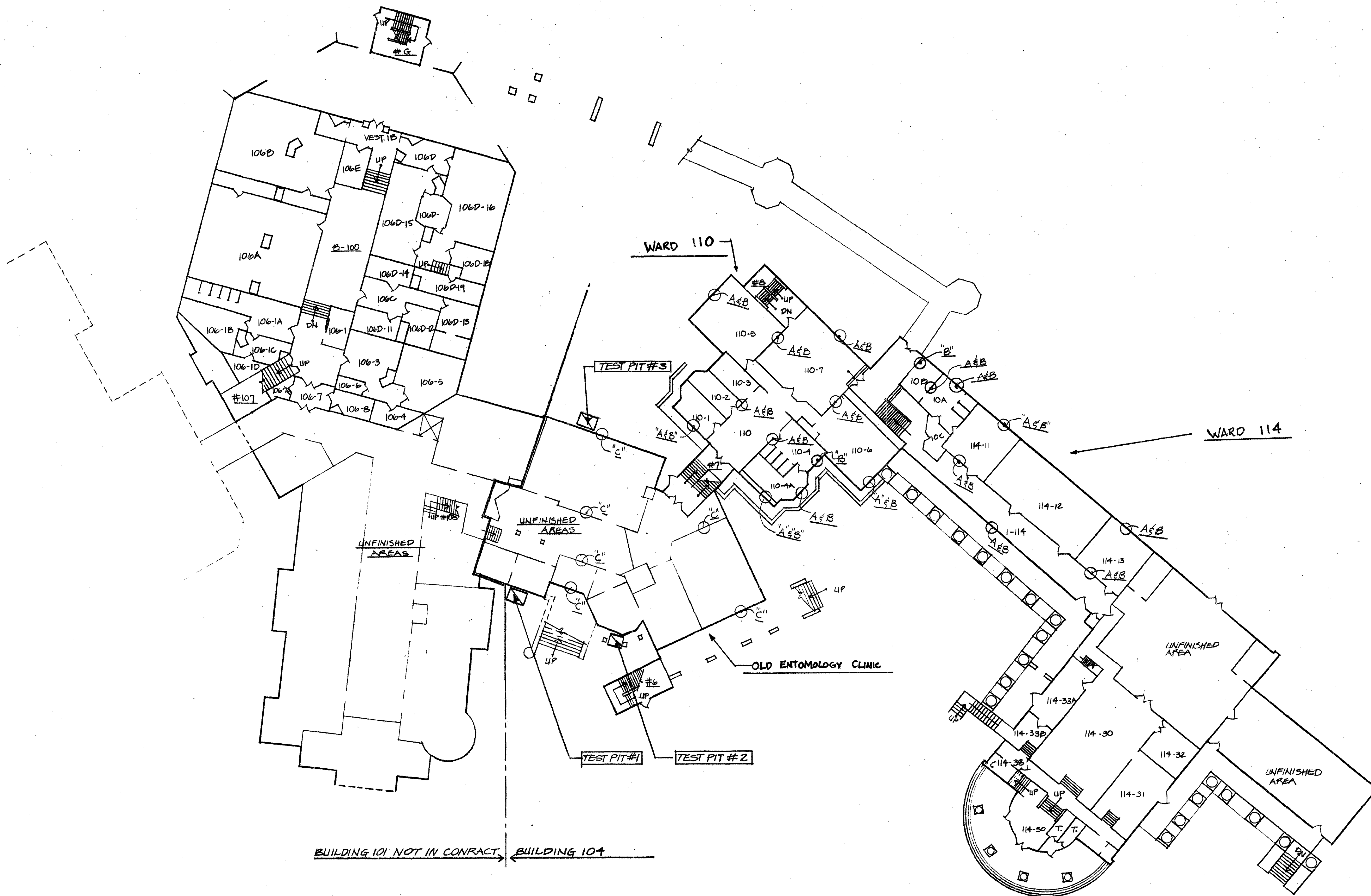


DATE		DESCRIPTION	
REVIEWED BY		WALTER REED ARMY MEDICAL CENTER FACILITIES ENGINEERING DIVISION WASHINGTON, D.C. 20012	
DRAWN BY		BUILDING 101	
DESIGN BY		INTERIOR PAINT SURVEY	
REVIEWED & COORDINATED			
PROJECT LEADER			
ENGR. CHG. #			
USING AGENCY			
DATE			
SUBMITTED BY		APPROVED BY	
COORDINATING OFFICE		FACILITIES ENGINEER	
CHIEF, ENGINEERING PLANS & REAL PROPERTY OFFICE		DATE	
SCALE		PROJECT NO.	

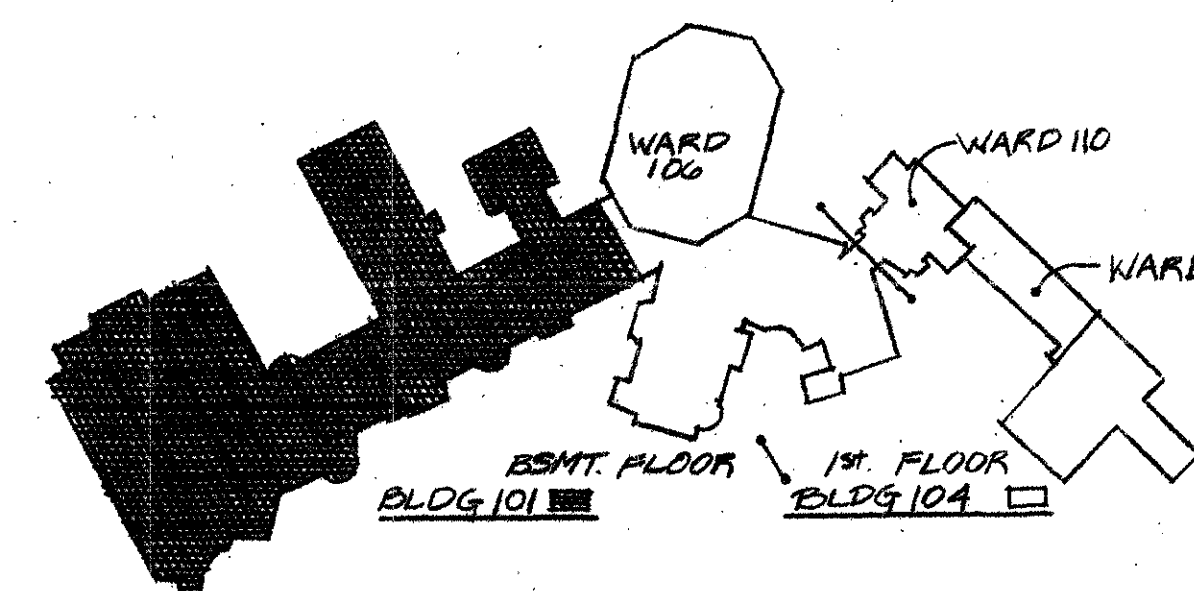


REVISION		DATE		DESCRIPTION		BY	
REVIEWED BY				WALTER REED ARMY MEDICAL CENTER FACILITIES ENGINEERING DIVISION WASHINGTON, D.C. 20012			
FIRE CHIEF		DRAWN BY: <i>mg</i>		<div style="border: 1px solid black; padding: 10px; text-align: center;"> BUILDING 101 INTERIOR PAINT SURVEY </div>			
		DESIGN BY:					
CH UTILITIES BY:		REVIEWED & COORDINATED					
		PROJECT LEADER					
CH BLDG & GRCS, BR		ENDING CHK. BY:					
		USING AGENCY					
		DATE					
SUPV. WORK COORDINATING OFFICE		SUBMITTED BY:		APPROVED BY:			
		CHIEF ENGINEERING PLANS & REAL PROPERTY OFFICE		DATE		FACILITIES ENGINEER (DATE)	
		SCALE: 1/16" = 1'-0"		PROJECT NO. <i>1600187</i>		SHEET <i>1</i> OF <i>5</i>	

[illegible]



BASEMENT/ FIRST FLOOR PLAN



KEY PLAN

REVISION		DATE	DESCRIPTION	BY
<p align="center">WALTER REED ARMY MEDICAL CENTER FACILITIES ENGINEERING DIVISION WASHINGTON, D.C. 20012</p>				
REVIEWED BY		<p align="center">DEMOLITION for INVESTIGATION of RENOVATION PROCEDURES BUILDING 104 / FOREST GLEN</p>		
PURE CHIEF	DESIGN BY	<p align="center">1/16</p>		
OK UTILITIES BR.	REVIEWED & COORDINATED	<p align="center">1/16</p>		
OK BLDG & GROU. BR.	PROJECT LEADER	<p align="center">1/16</p>		
USING AGENCY	DATE	<p align="center">1/16</p>		
SUPV. WORK	APPROVED BY	<p align="center">1/24/83</p>		
COORDINATING OFFICE	DATE	<p align="center">1/24/83</p>		
PROPERTY OFFICE	DATE	<p align="center">1/24/83</p>		
SCALE	PROJECT NO.	<p align="center">1/16" = 1'-0"</p>		
SHEET		<p align="center">2 OF 4</p>		

EXTERIOR WOOD & MASONRY REPAIRS, BUILDING 104 & BALLROOM ADDITION OF 101 — FOREST GLEN SECTION, WRAMC

GENERAL NOTES

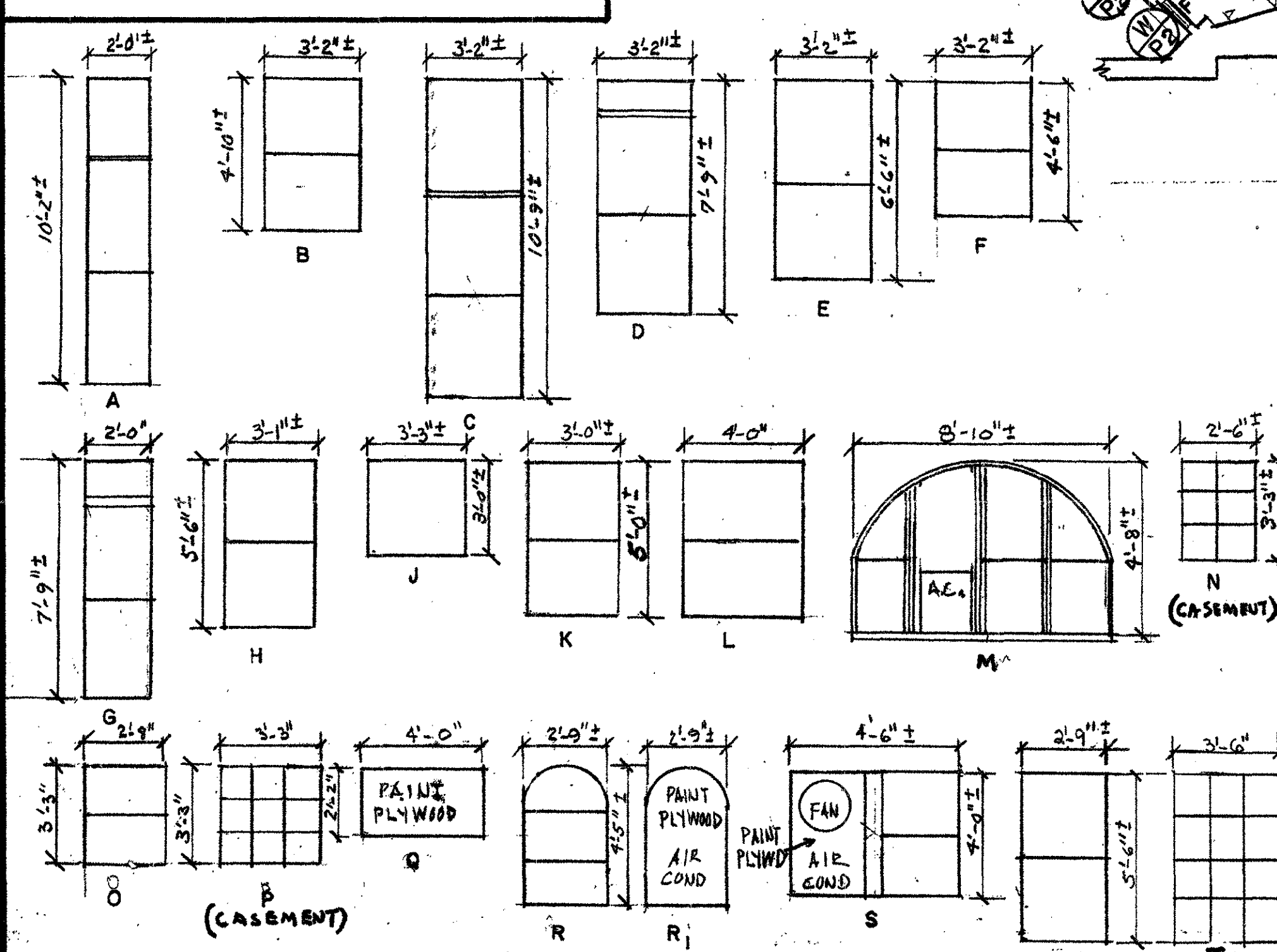
- EXECUTE WORK IN A CAREFUL AND ORDERLY MANNER, WITH THE LEAST POSSIBLE DISTURBANCE TO OCCUPANTS AND ROUTINE ACTIVITIES OF HOSPITAL OPERATIONS. PERFORM WORK SO AS TO AVOID HAZARD TO PERSONS AND PROPERTY. PREVENT THE SPREAD OF DUST AND FLYING PARTICLES.
- THE CONTRACTOR SHALL NOTIFY THE CONTRACTING OFFICER AT LEAST ONE (1) WEEK IN ADVANCE AND OBTAIN APPROVAL FOR ANY INTERRUPTION OF SERVICE AND ANY CHANGES REQUIRED IN ROUTINE HOSPITAL ACTIVITIES DURING CONSTRUCTION OPERATIONS.
- CONTRACTOR'S NOTE: PAINT COLORS SHALL MATCH EXISTING COLORS THROUGHOUT THE PROJECT UNLESS OTHERWISE NOTED.
- CONTRACTOR SHALL REPLACE ALL DEFECTIVE MILLWORK INDICATED. OTHER ITEMS FOUND DEFECTIVE DURING THE COURSE OF THE WORK SHALL BE REPLACED UNDER THIS CONTRACT AS DIRECTED BY THE CONTRACTING OFFICER. ALL REPLACEMENT MATERIALS SHALL MATCH EXISTING IN DESIGN AND SIZE.

SHEET NOTE (SN-)

SN-4 All Gutters and Downspouts in the Contract Area shall be painted two coats, whether indicated on drawings or not.

LEGEND - THIS SHEET

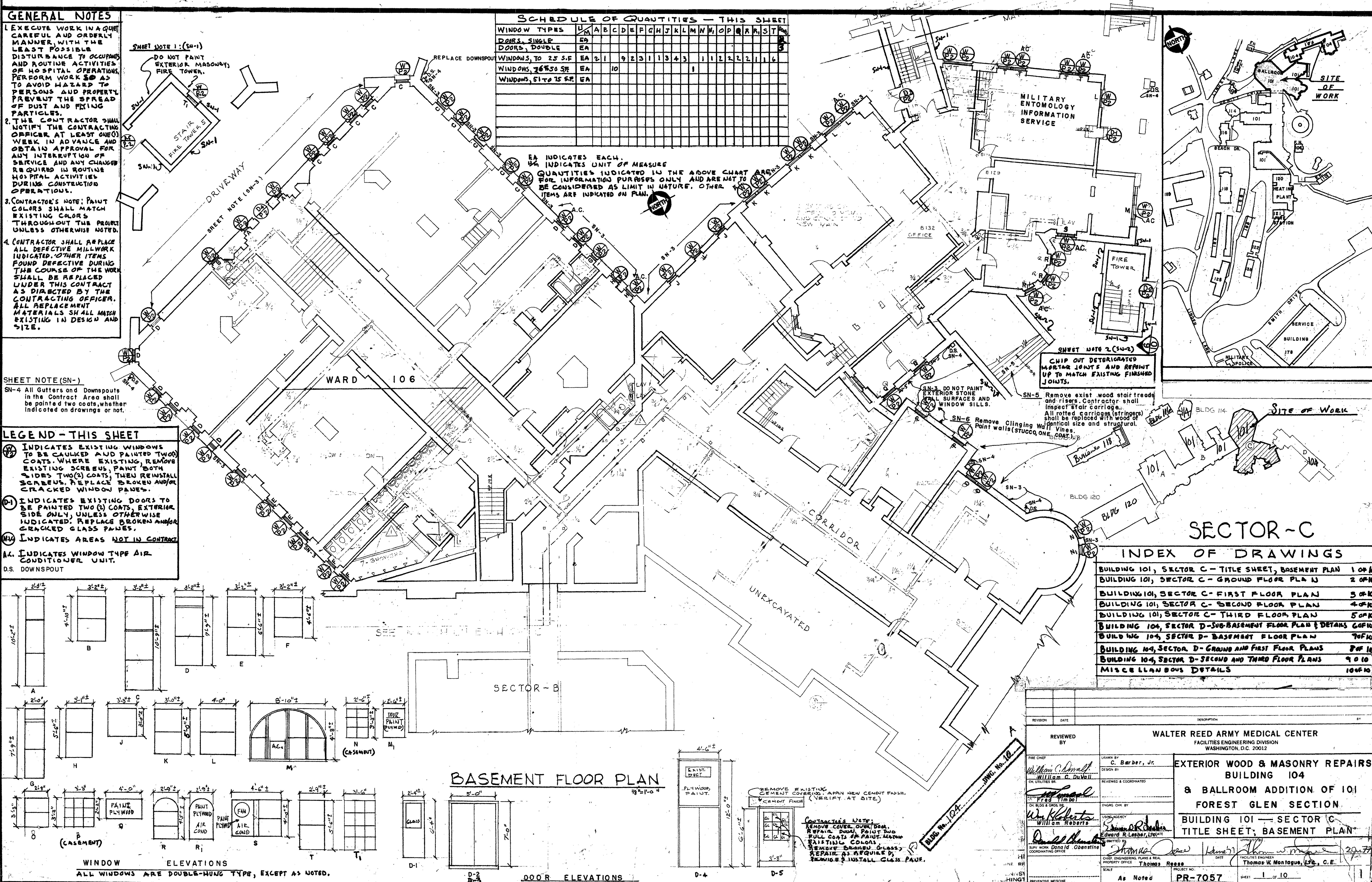
- INDICATES EXISTING WINDOWS TO BE CAULKED AND PAINTED TWO COATS. WHERE EXISTING REMOVE EXISTING SCREENS, PAINT BOTH SIDES TWO (2) COATS, THEN REINSTALL SCREENS. REPLACE BROKEN AND/OR CRACKED WINDOW PANE.
- INDICATES EXISTING DOORS TO BE PAINTED TWO (2) COATS, EXTERIOR SIDE ONLY, UNLESS OTHERWISE INDICATED. REPLACE BROKEN AND/OR CRACKED GLASS PANE.
- INDICATES AREAS NOT IN CONTRACT.
- INDICATES WINDOW TYPE AIR CONDITIONER UNIT.
- D.S. DOWNSPOUT



SCHEDULE OF QUANTITIES - THIS SHEET

WINDOW TYPES	U	A	B	C	D	E	F	G	H	J	K	L	M	N	O	P	Q	R	S	T	U
DOORS, SINGLE	EA																				
DOORS, DOUBLE	EA																				
WINDOWS, TO 25 S.F.	EA	21	9	2	3	1	1	3	4	3					1	1	2	2	2	1	1
WINDOWS, 26 TO 50 S.F.	EA		10																		
WINDOWS, 51 TO 75 S.F.	EA																				

EA INDICATES EACH.
U.A. INDICATES UNIT OF MEASURE.
QUANTITIES INDICATED IN THE ABOVE CHART ARE FOR INFORMATION PURPOSES ONLY AND ARE NOT TO BE CONSIDERED AS LIMIT IN NATURE. OTHER ITEMS ARE INDICATED ON PLAN.



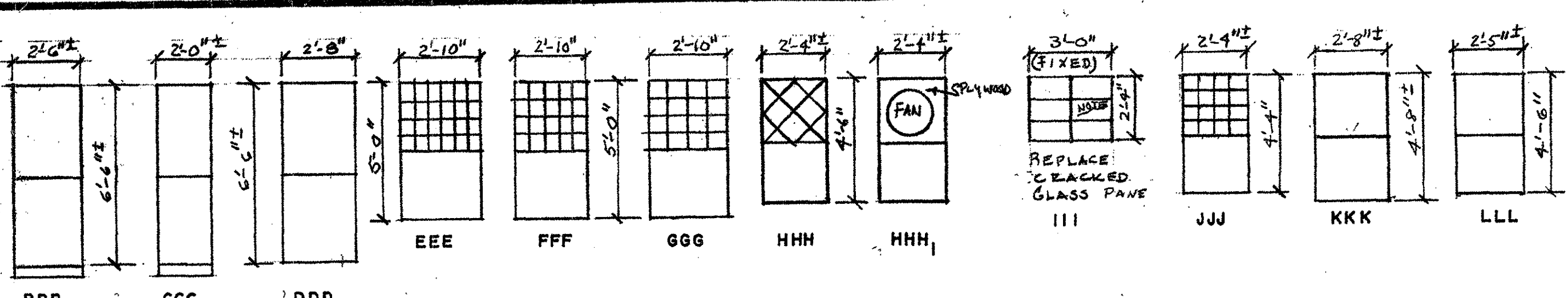
SECTOR - C

INDEX OF DRAWINGS

BUILDING 101, SECTOR C - TITLE SHEET, BASEMENT PLAN	1 OF 10
BUILDING 101, SECTOR C - GROUND FLOOR PLAN	2 OF 10
BUILDING 101, SECTOR C - FIRST FLOOR PLAN	3 OF 10
BUILDING 101, SECTOR C - SECOND FLOOR PLAN	4 OF 10
BUILDING 101, SECTOR C - THIRD FLOOR PLAN	5 OF 10
BUILDING 104, SECTOR D - SUB-BASEMENT FLOOR PLAN & DETAILS	6 OF 10
BUILDING 104, SECTOR D - BASEMENT FLOOR PLAN	7 OF 10
BUILDING 104, SECTOR D - GROUND AND FIRST FLOOR PLANS	8 OF 10
BUILDING 104, SECTOR D - SECOND AND THIRD FLOOR PLANS	9 OF 10
MISCELLANEOUS DETAILS	10 OF 10

REVIEWED BY		WALTER REED ARMY MEDICAL CENTER FACILITIES ENGINEERING DIVISION WASHINGTON, D.C. 20012	
DESIGNED BY C. Barber, Jr.		EXTERIOR WOOD & MASONRY REPAIRS BUILDING 104 & BALLROOM ADDITION OF 101 FOREST GLEN SECTION BUILDING 101 - SECTOR C TITLE SHEET, BASEMENT PLAN	
CHECKED BY William C. DuVal		DATE 20/7/77	
ENGINEER William Roberts		SCALE As Noted	
SUPERVISOR Donald H. Oberst		PROJECT NO. PR-7057	
COORDINATING OFFICE		SHEET 1 OF 10	

- SN-1- DONOT PAINT STONE OR BRICK WALL SURFACES UNLESS NOTED ON PLANS.
- SN-2 ALL GUTTERS AND DOWNSPOUTS IN THE CONTRACT AREAS SHALL BE PAINTED TWO (2) COATS, WHETHER INDICATED ON DRAWINGS OR NOT.
- SN-3 REMOVE CHIMING VINES FROM WALL SURFACES, WHETHER INDICATED ON DRAWINGS OR NOT.
- SN-4 REMOVE EXISTING DETERIORATED WOOD TRIM, EMBEDED IN STUCCO, PROVIDE NEW TRIM OF IDENTICAL SIZE, (VERIFY AT SITE). A NEW AND EXISTING TRIM SHALL BE PAINTED TWO COATS.
- SN-5 EXTERIOR STUCCO: PATCH AND REPAIR DETERIORATED STUCCO WALLS THROUGHOUT CONTRACT AREAS WHETHER INDICATED OR NOT ON THE PLANS. PAINT EXISTING STUCCO SURFACES ONE FULL COAT.
- SN-6 CONTRACTOR SHALL CHECK ALL PORCH RAILINGS AND APPURTENANCES, REPLACE DEFECTIVE, BROKEN AND OR MISSING MEMBERS WITH NEW LUMBER, IDENTICAL IN SIZE, DESIGN AND FINISH. PAINT RAILINGS, PORCH DECKS, PORCH CEILINGS, COLUMNS AND PIERS TWO COATS.
- SN-7 CONTRACTOR SHALL CHECK ALL CORNICE (FASCIA TRIM), REPLACE ALL DEFECTIVE CORNICE TRIM, WINDOW TRIM, ETC. OR MISSING TRIM WITH NEW LUMBER, IDENTICAL IN SIZE, DESIGN AND FINISH, WHETHER INDICATED OR NOT ON DRAWINGS. APPROXIMATELY 2,000 LF OF VARYING SIZES. PAINT ALL WOOD TRIM (NEW AND EXISTING) TWO (2) COATS.

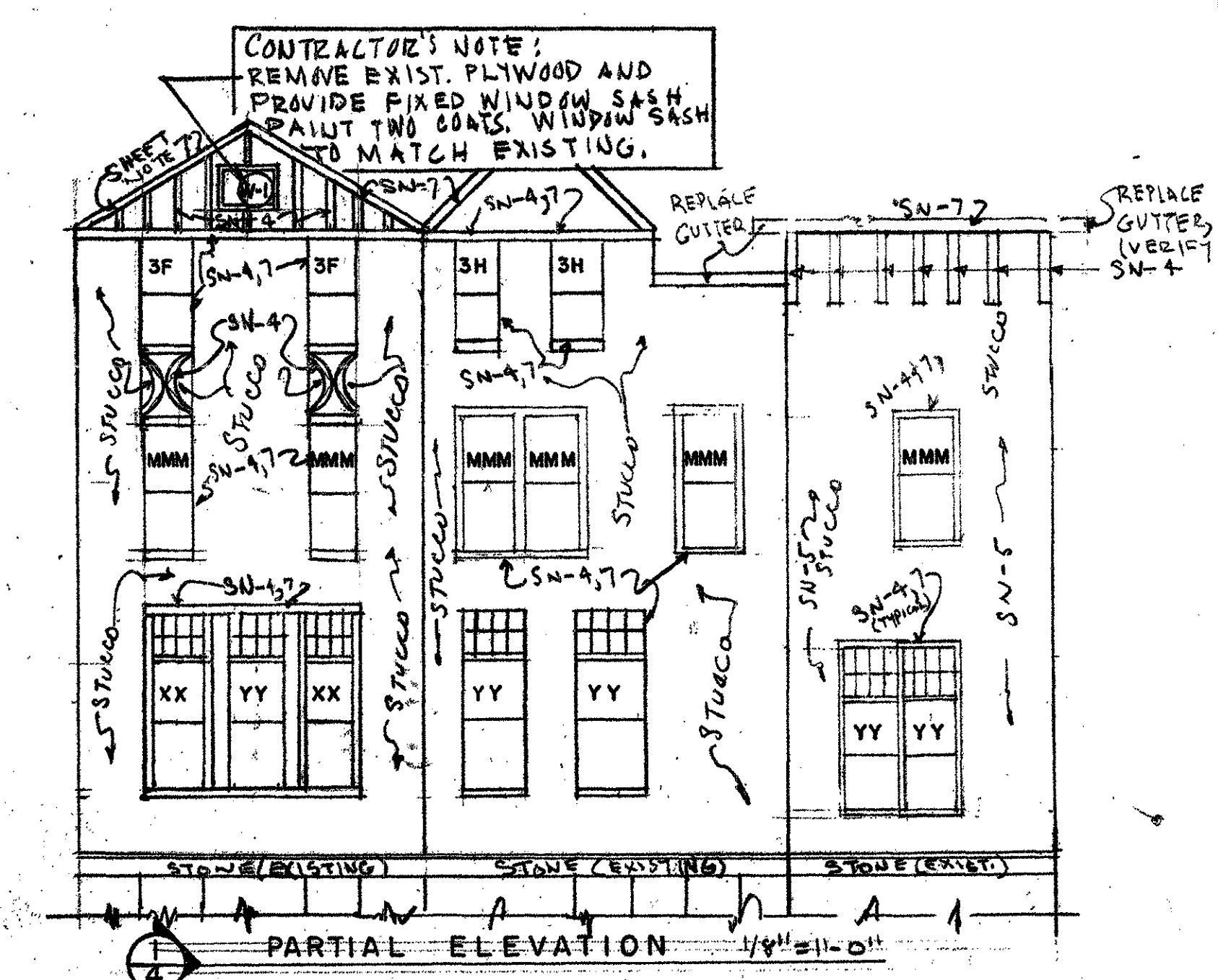
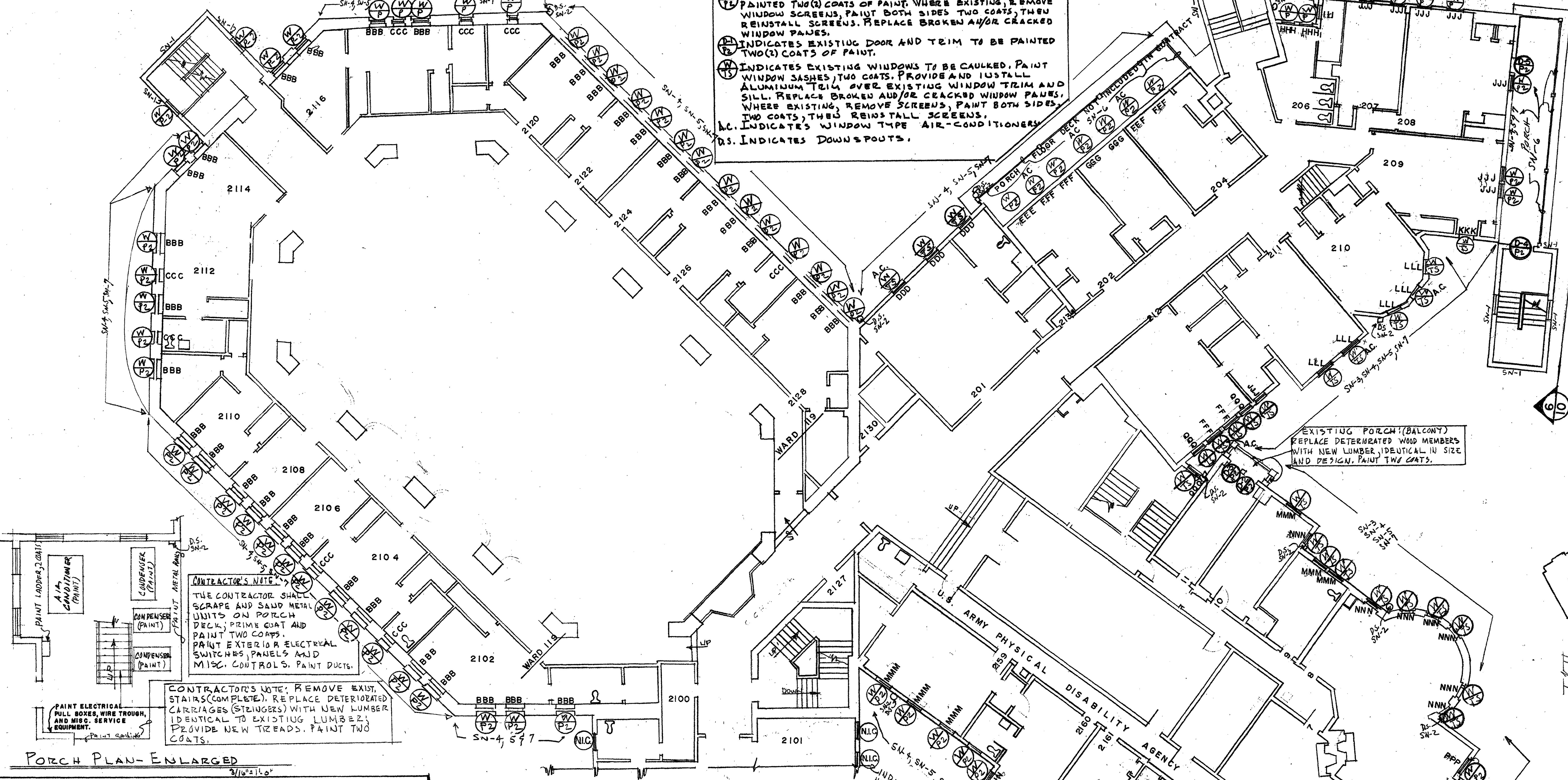


WINDOWS ELEVATIONS

ALL WINDOWS ARE DOUBLE-HUNG TYPE, EXCEPT AS NOTED

LEGEND-THIS SHEET

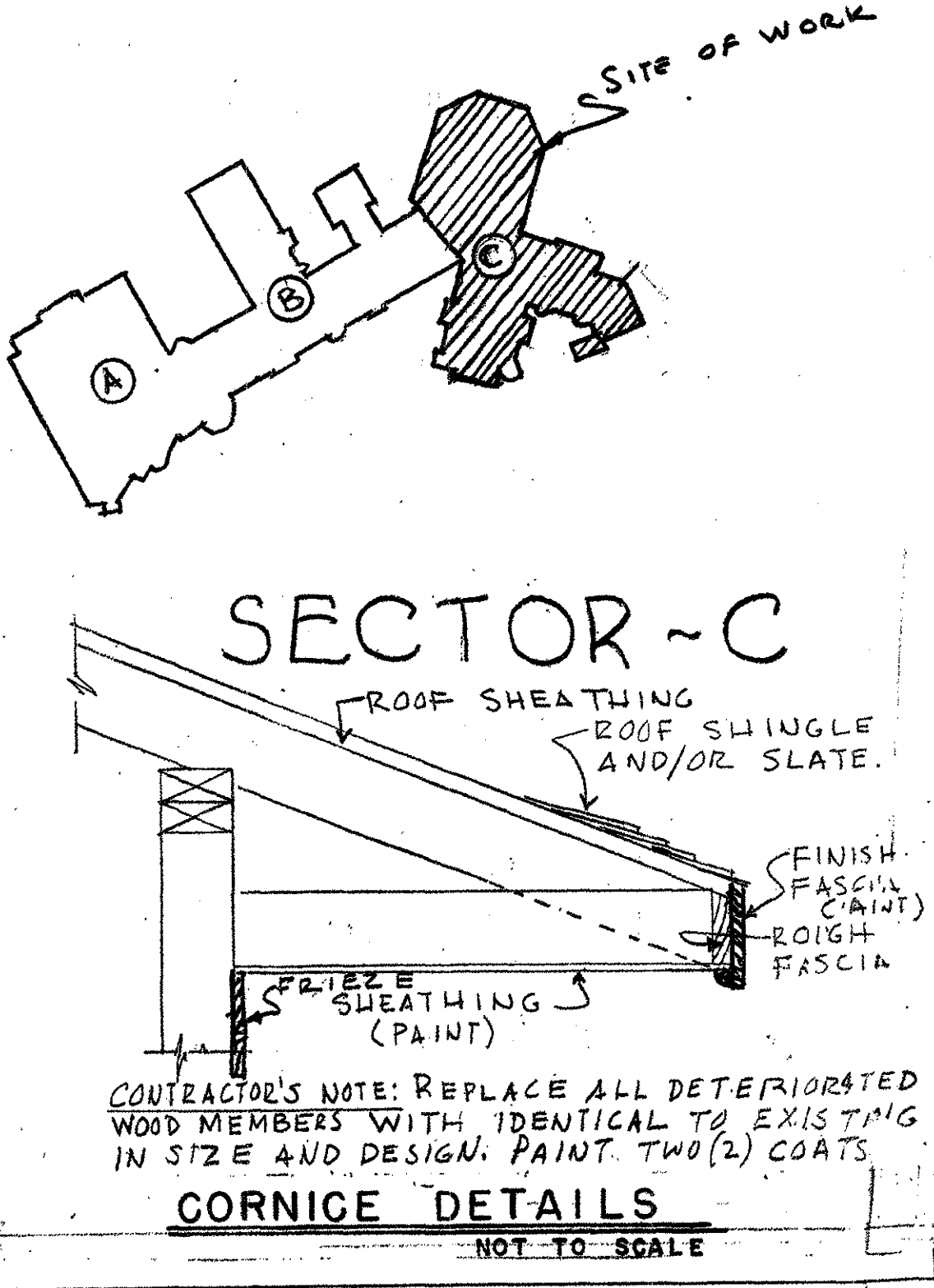
- (W) INDICATES EXISTING WINDOWS TO BE CAULKED AND PAINTED TWO (2) COATS OF PAINT. WHERE EXISTING, REMOVE WINDOW SCREENS, PAINT BOTH SIDES TWO COATS, THEN REINSTALL SCREENS. REPLACE BROKEN AND/OR CRACKED WINDOW PANE.
- (P) INDICATES EXISTING DOOR AND TRIM TO BE PAINTED TWO (2) COATS OF PAINT.
- (W) INDICATES EXISTING WINDOWS TO BE CAULKED, PAINT WINDOW SASHES, TWO COATS. PROVIDE AND INSTALL ALUMINUM TRIM OVER EXISTING WINDOW TRIM AND SILL. REPLACE BROKEN AND/OR CRACKED WINDOW PANE, WHERE EXISTING, REMOVE SCREENS, PAINT BOTH SIDES TWO COATS, THEN REINSTALL SCREENS.
- (A.C.) INDICATES WINDOW TYPE AIR-CONDITIONERS.
- (D.S.) INDICATES DOWNSPOUTS.



CONTRACTOR'S NOTE: REMOVE EXIST. STAIRS (COMPLETE). REPLACE DETERIORATED CARRIAGES (STAIRERS) WITH NEW LUMBER, IDENTICAL TO EXISTING LUMBER. PROVIDE NEW TREADS. PAINT TWO COATS.

SCHEDULE OF QUANTITIES-THIS SHEET																										
ITEM	UNIT	M	A	B	C	D	E	F	G	H	I	J	K	L	M	N	O	P	Q	R	S	T	U	V	W	
WINDOWS, TO 25 S.F.	EACH	35	9	3	1	4	2	1	2	1	7	1	5	3	9	1	4	9	4							
WINDOWS, 26 TO 50 S.F.	EACH																									
WINDOWS, 51 TO 75 S.F.	EACH																									
DOORS, SINGLE	EACH																			5						
DOORS, DOUBLE	EACH																									
CORNICE	LP																				200					
CORNICE	LP																									
STUCCO WALL SURFACES	SQ. FT.																					16				

INDICATES ELEVATION DETAIL, ETC. (TYPICAL) IS SHOWN (TYPICAL)



WALTER REED ARMY MEDICAL CENTER
FACILITIES ENGINEERING DIVISION
WASHINGTON, D.C. 20012

EXTERIOR WOOD & MASONRY REPAIRS
BUILDING 104
& BALLROOM ADDITION OF 101
FOREST GLEN SECTION
BUILDING 101- SECTOR C
SECOND FLOOR PLAN

REVIEWED BY	DATE	APPROVED BY	DATE
DESIGNED BY	DATE	PROJECT LEADER	DATE
REVIEWED & COORDINATED	DATE	ENGINEER, CHIEF BY	DATE
UTILITY BR.	DATE	USING AGENCY	DATE
BLDG & GRCS. BR.	DATE	SUBMITTED BY	DATE
ADJ. WORK	DATE	CHIEF ENGINEER, PLANS & REAL	DATE
COORDINATING OFFICE	DATE	PROPERTY OFFICE	DATE
PREVENTIVE MEDICINE	DATE	SCALE	DATE

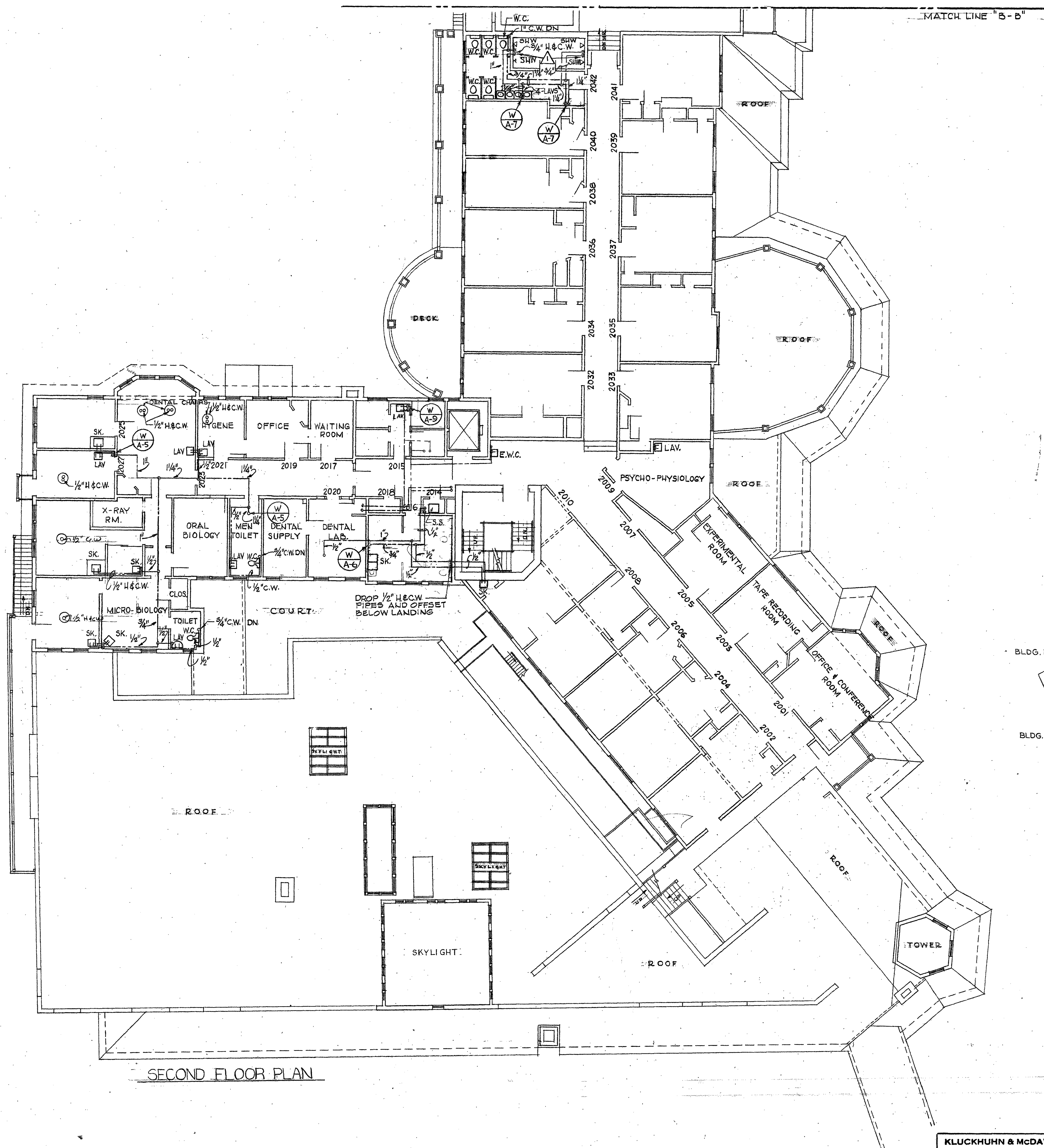
As Noted PR-7057 SHEET 4 OF 10

SHEET NOTES (SN-):

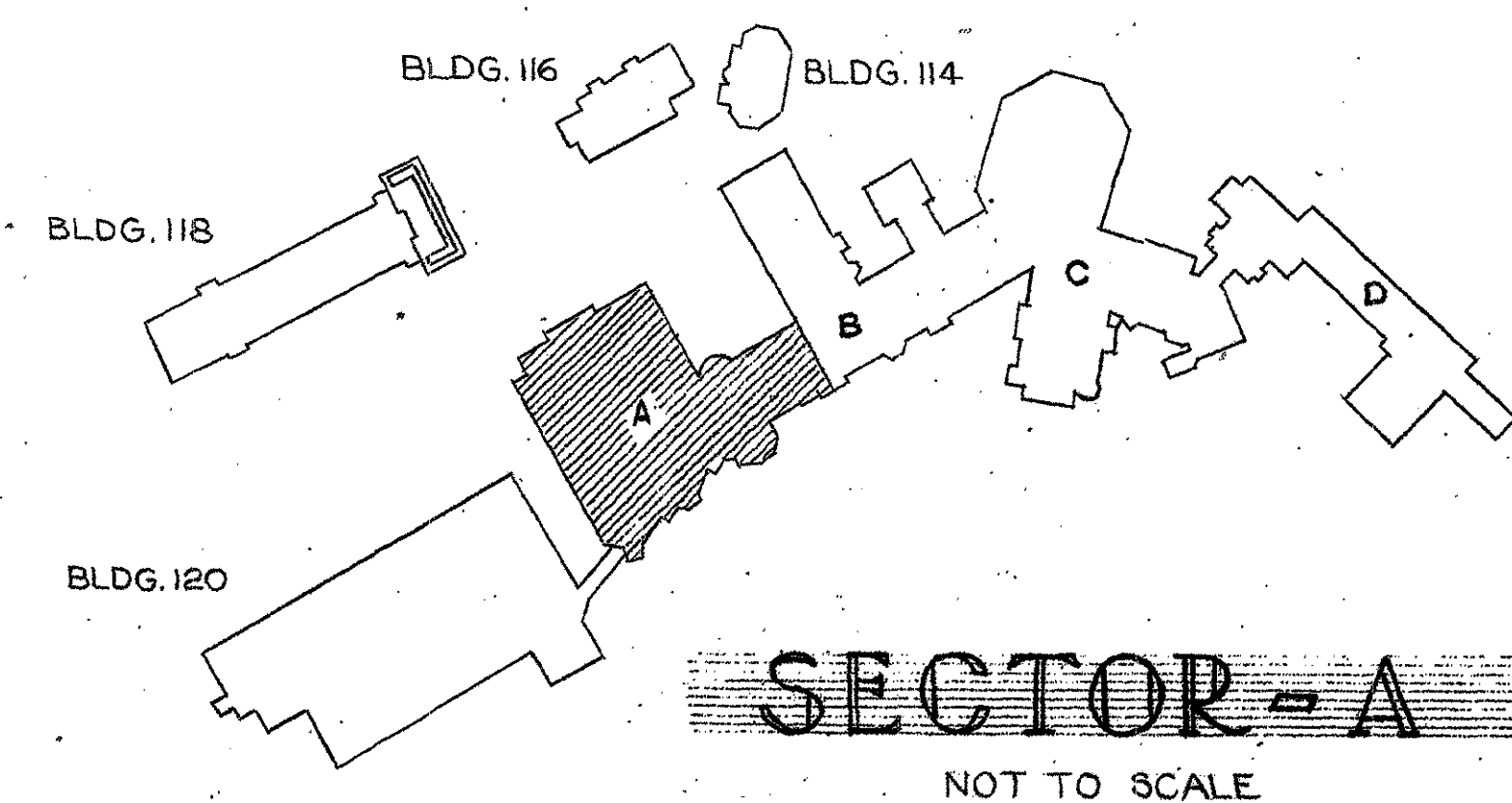
- SN-1 CAREFULLY REMOVE EXISTING PORCH SCREENING, REPAIR PORCH CEILING, PAINT TWO (2) COATS. REMOVE FLOOR DECKING AND PROVIDE NEW 3/4-INCH LUMBER (PINE). CONTRACTOR SHALL REPLACE ALL DETERIORATED JOISTS AT NO ADDITIONAL COST TO THE GOVERNMENT, PAINT DECK TWO (2) COATS.
- SN-2 DO NOT PAINT EXTERIOR MASONRY SURFACES AND/OR STONE WALL SURFACES, UNLESS OTHERWISE NOTED ON PLANS.
- SN-3 CONTRACTOR SHALL REPLACE DETERIORATED BEADED SHEATHING OF PORCH CEILING, REPLACE MISSING WOOD SHINGLES AT WALL OR PORCH COLUMNS (PIERS) WHERE SUCH CONDITIONS EXIST, AND PAINT TWO (2) COATS OF PAINT. CONTRACTOR SHALL REPLACE WOOD RAILING AND PROVIDE NEW RAILING TO MATCH EXISTING WOOD RAILING IN DESIGN, HEIGHT AND FINISH. PAINT TWO (2) COATS, MATCH EXISTING FINISHES.
- SN-4 CONTRACTOR SHALL REPLACE ALL DETERIORATED WOOD TRIM AT ALL LOCATIONS UNDER THE CONTRACT AS DIRECTED. PAINT ALL WOOD TRIM TWO (2) COATS, MATCHING ORIGINAL COLOR. VERIFY AT SITE.

[illegible]

REVISION		DATE		DESCRIPTION		BY	
REVIEWED BY				WALTER REED ARMY MEDICAL CENTER FACILITIES ENGINEERING DIVISION WASHINGTON, D.C. 20012			
FIRE CHIEF 1		DRAWN BY C. Barber, Jr.		EXTERIOR WOOD & MASONRY REPAIRS BUILDING 104 & BALLROOM ADDITION OF 101 FOREST GLEN SECTION BUILDING 101 — SECTOR C GROUND FLOOR PLAN			
William C. DuVall		DESIGN BY					
CH UTILITIES BR		REVIEWED & COORDINATED					
Fred Yimbo		PROJECT LEADER					
CH ELEC & CORD BR		ENGAG CHM BY					
William Roberts		USING AGENCY					
SUPV WORK Donald Obenstine COORDINATING OFFICE		Edward R. Lesher, Lt. Colate		APPROVED BY			
		SUBMITTED BY					
CHIEF ENGINEERING PLANS & REAL PROPERTY OFFICE Thomas Reese		DATE		FACILITIES ENGINEER Thomas W. Montague, Lt. Col. C.E.		DATE	
SCALE As Noted		PROJECT NO PR-7057		SHEET 2 OF 10		2	
PREVENTIVE MEDICINE							



SECOND FLOOR PLAN



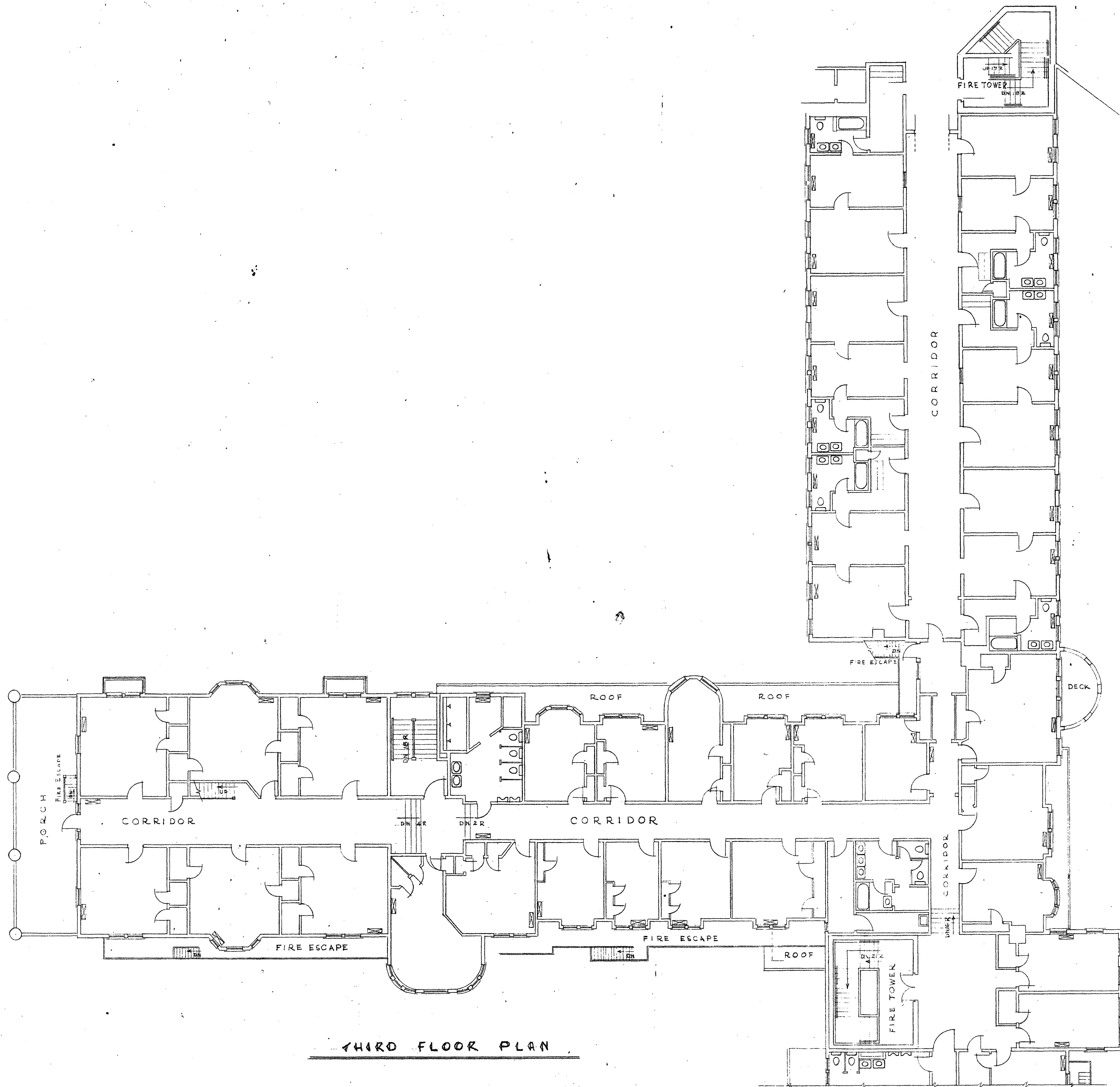
AS BUILT

GRAPHIC SCALE

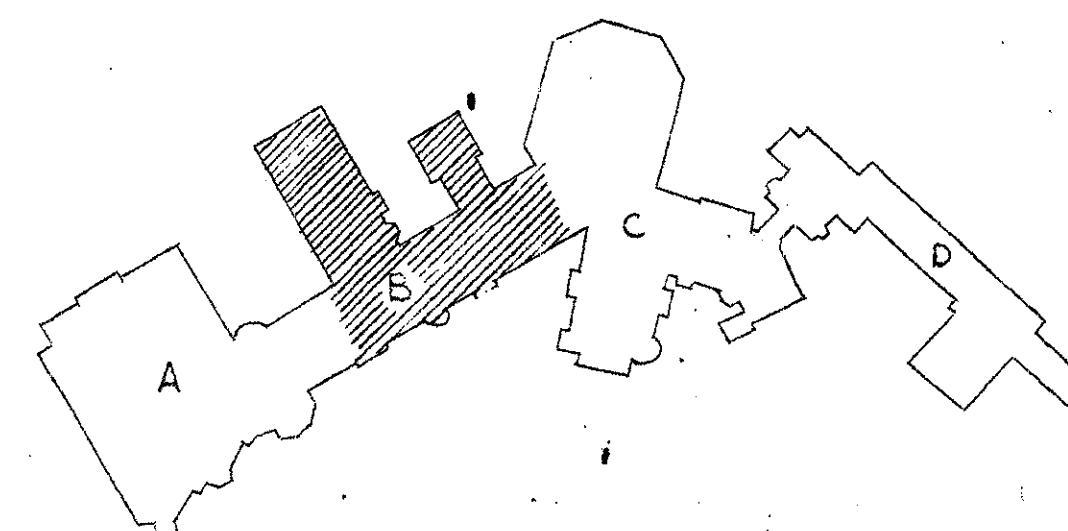
1/8" = 1'-0" 5' 10' 15'

REVISION	DATE	DESCRIPTION	BY
1	22 JAN 70	UPDATED AS BUILT	PS
DEPARTMENT OF THE ARMY BALTIMORE DISTRICT, CORPS OF ENGINEERS BALTIMORE, MARYLAND			
WALTER REED ARMY MEDICAL CENTER WASHINGTON, D. C.			
REPLACEMENT OF HOT AND COLD WATER DISTRIBUTION SYSTEM - FOREST GLEN SECTION			
SECTOR "A", SECOND FLOOR PLAN			
DRAWN BY: G. N. K.	DATE: 22 MAY 1967		
TRACED BY: G. N. K.	APPROVED: COLONEL, CORPS OF ENGINEERS, DISTRICT ENGINEER		
CHECKED BY: A. J. L.	SPEC. NO.		
REVIEWED & COORDINATED	DRAWING NUMBER		
A/E PRINCIPAL	40-13-06		
SUBMITTED:	SHEET 4		
CH. MIL. BR. ENGR. DIV.	DATE: 22 MAY 1967		
RECOMMENDED:	DATE: 22 MAY 1967		
CHIEF, ENGINEERING DIVISION	DATE: 22 MAY 1967		
APPROVED FOR:	DATE: 22 MAY 1967		

KLUCKHUHN & McDAVID CO.
ENGINEERING CONSULTANTS
2430 PENNSYLVANIA AVE., N. W.
WASHINGTON, D. C. 20037



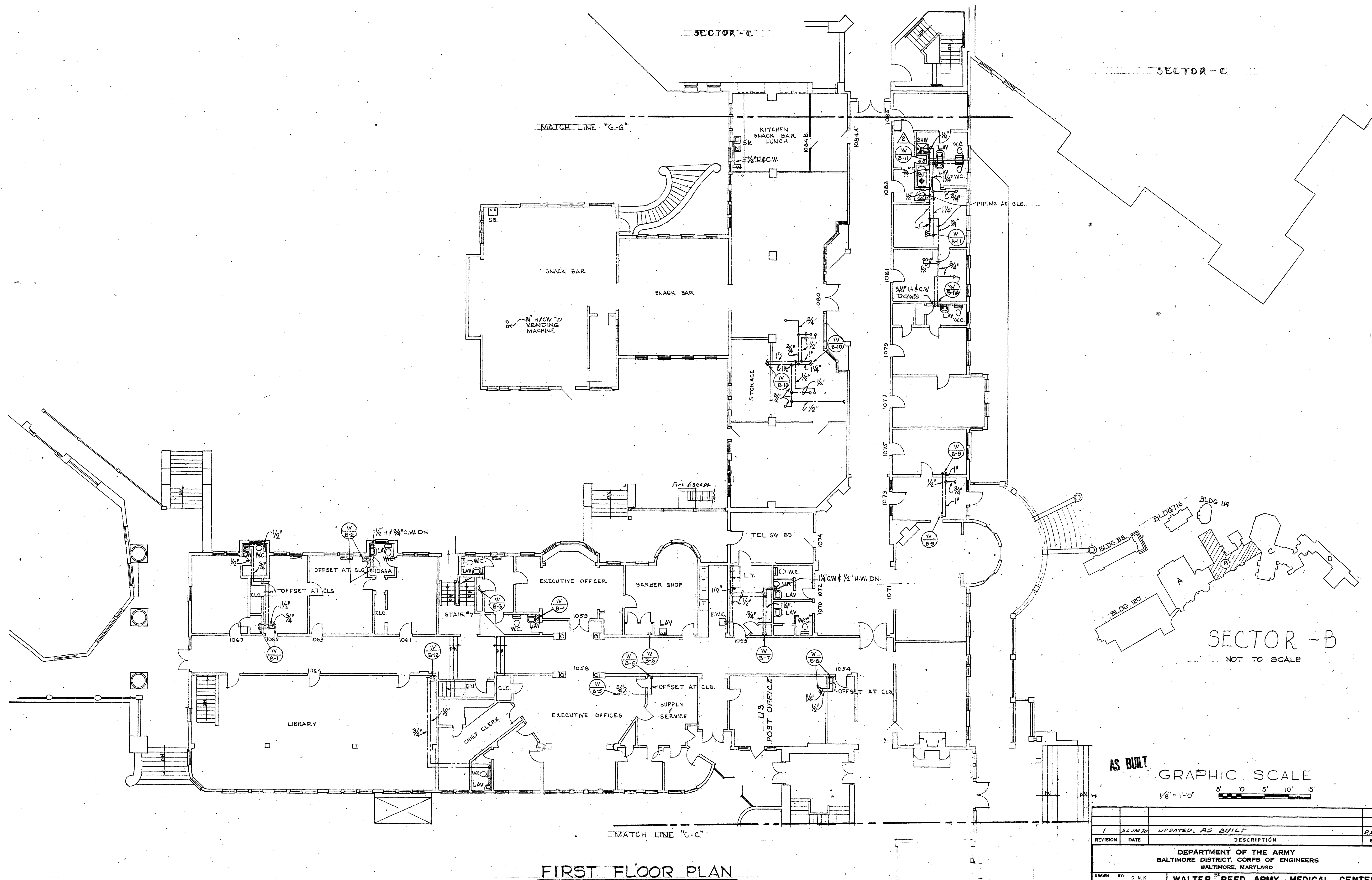
THIRD FLOOR PLAN



SECTOR - B

SCALE 1/8" = 1'-0"

REVISION	DATE	DESCRIPTION	BY
WALTER REED ARMY MEDICAL CENTER OFFICE OF THE CENTER ENGINEER WASHINGTON, D. C. 20012			
DESIGNED BY:		BUILDING - 101 FOREST GLEN	
DRAWN BY: HARRY MALLETT			
DRAFTING CHK. BY:			
ENGRG. CHK. BY:			
APPD. BY P. & P:			
SUBMITTED BY:		APPROVED BY:	
SCALE: SCALE 1/8" = 1'-0"		PROJECT NO.	
		SHEET OF	



FIRST FLOOR PLAN

AS BUILT

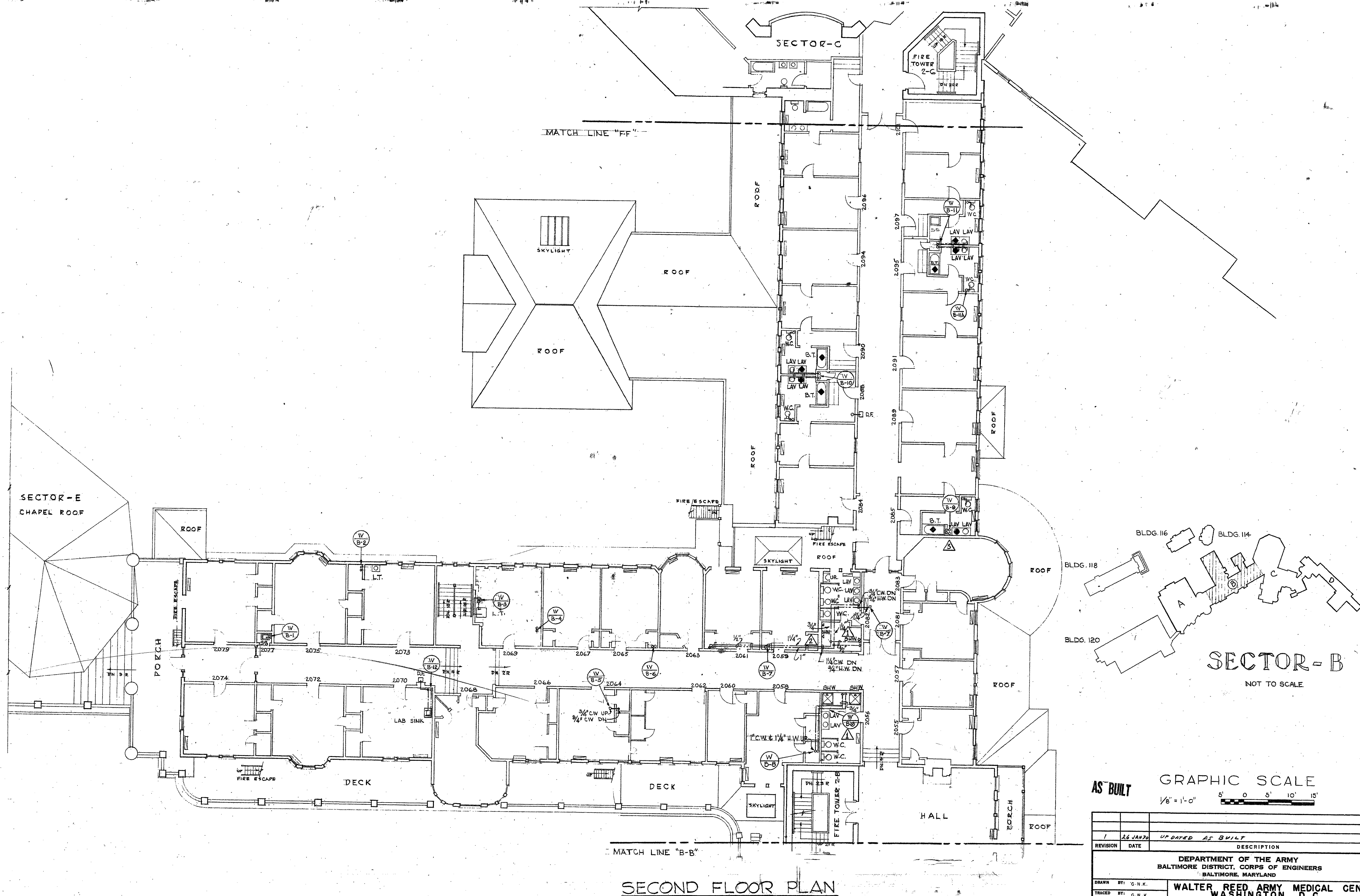
GRAPHIC SCALE

1/8" = 1'-0" 5' 0' 5' 10' 15'

REVISION	DATE	DESCRIPTION	BY
1	26 JAN 70	UPDATED, AS BUILT	PS

DEPARTMENT OF THE ARMY BALTIMORE DISTRICT, CORPS OF ENGINEERS BALTIMORE, MARYLAND	
DRAWN BY: C.N.K. TRACED BY: C.N.K. CHECKED BY: A.J.L. REVIEWED & COORDINATED: SUBMITTED: CH. MIL. SR. ENGR. DIV. RECOMMENDED: CHIEF, ENGINEERING DIVISION	WALTER REED ARMY MEDICAL CENTER WASHINGTON, D. C. REPLACEMENT OF HOT AND COLD WATER DISTRIBUTION SYSTEM - FOREST GLEN SECTION SECTOR "B", FIRST FLOOR PLAN APPROVED: _____ DATE: 22 MAY 1967 COLONEL, CORPS OF ENGINEERS, DISTRICT ENGINEER

APPROVED FOR:	SCALE: 1/8" = 1'-0"	SPEC. NO.
KLUCKHUHN & McDAVID CO. ENGINEERING CONSULTANTS 2430 PENNSYLVANIA AVE., N.W. WASHINGTON, D.C. 20037	DRAWING NUMBER 40-13-06 PR-7028	SHEET 7



SECOND FLOOR PLAN

KLUCKHUHN & McDAVID CO.
ENGINEERING CONSULTANTS
2430 PENNSYLVANIA AVE., N.W.
WASHINGTON, D. C. 20037

REVISION	DATE	DESCRIPTION	BY
1	26 JAN 70	UPDATED AS BUILT	

DEPARTMENT OF THE ARMY
BALTIMORE DISTRICT, CORPS OF ENGINEERS
BALTIMORE, MARYLAND

WALTER REED ARMY MEDICAL CENTER
WASHINGTON, D. C.

REPLACEMENT OF HOT AND COLD WATER
DISTRIBUTION SYSTEM - FOREST GLEN SECTION

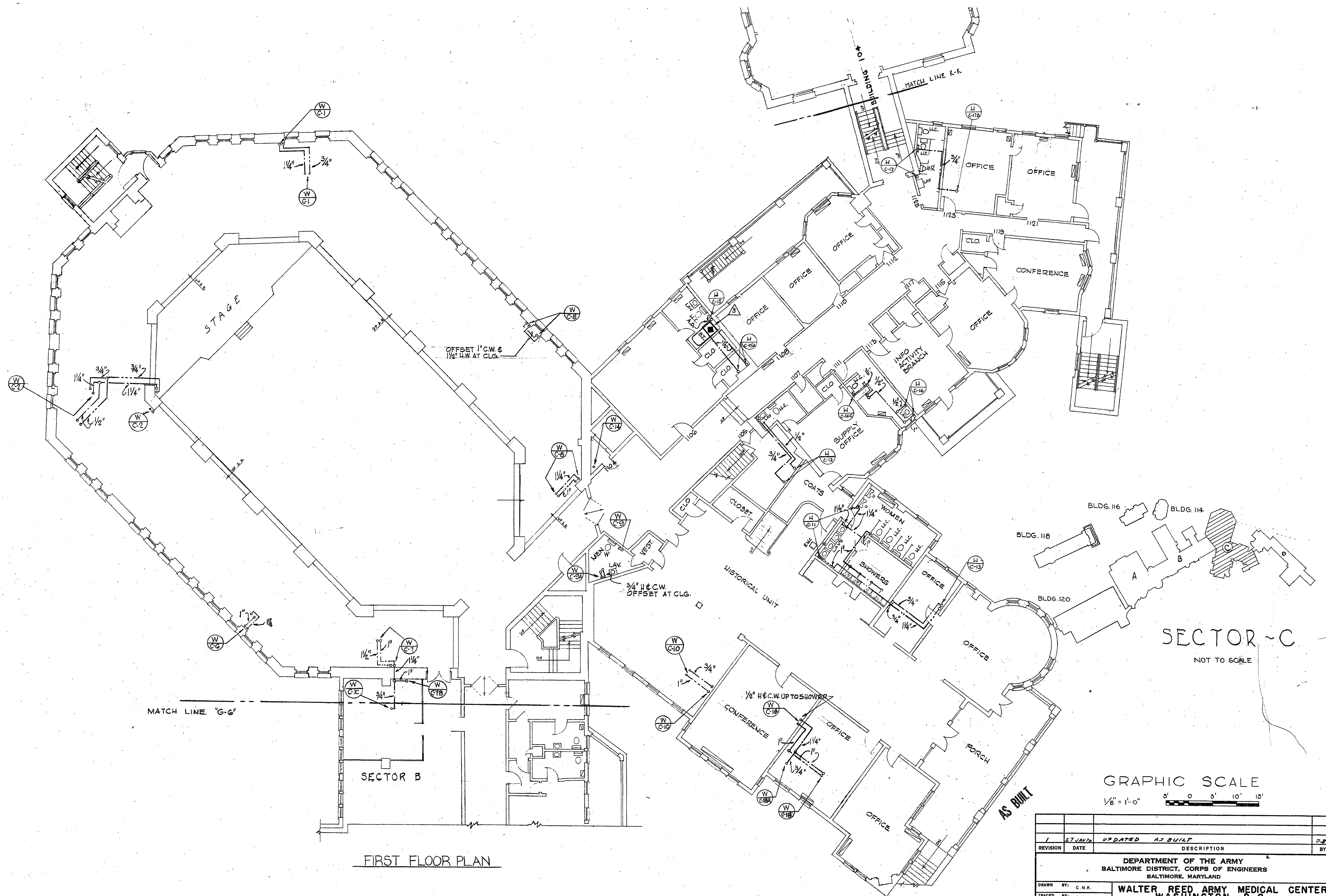
SECTOR "B", SECOND FLOOR PLAN

DRAWN BY: G.N.K.
TRACED BY: G.N.K.
CHECKED BY: A.J.L.
REVIEWED & COORDINATED:
SUBMITTED:
CH. MIL. BR. ENGR. DIV.
RECOMMENDED:
CHIEF, ENGINEERING DIVISION

APPROVED:
DATE: 22 MAY 1967
COLONEL, CORPS OF ENGINEERS, DISTRICT ENGINEER

APPROVED FOR:
SCALE: 1/8" = 1'-0"

DRAWING NUMBER
40-13-06
SHEET 8 OF 12
PL-7028



FIRST FLOOR PLAN

GRAPHIC SCALE

1/8" = 1'-0"

REVISION	DATE	DESCRIPTION	BY
1	27 JAN 76	UPDATED AS BUILT	D.S.

DEPARTMENT OF THE ARMY BALTIMORE DISTRICT, CORPS OF ENGINEERS BALTIMORE, MARYLAND	
DRAWN BY: G.N.K.	WALTER REED ARMY MEDICAL CENTER WASHINGTON, D. C.
TRACED BY: G.N.K.	
CHECKED BY: A.J.L.	
REVIEWED & COORDINATED	
A/E PRINCIPAL	
SUBMITTED:	REPLACEMENT OF HOT AND COLD WATER DISTRIBUTION SYSTEM - FOREST GLEN SECTION
CH. MIL. BR. ENGR. DIV.	
RECOMMENDED:	
CHIEF, ENGINEERING DIVISION	
APPROVED FOR:	DATE: 22 MAY 1967
CLUCKHUHN & McDAVID CO. ENGINEERING CONSULTANTS 2430 PENNSYLVANIA AVE., N.W. WASHINGTON, D.C. 20037	
SCALE: 1/8" = 1'-0"	
DRAWING NUMBER 40-13-06	
SHEET 12 PR-702B	