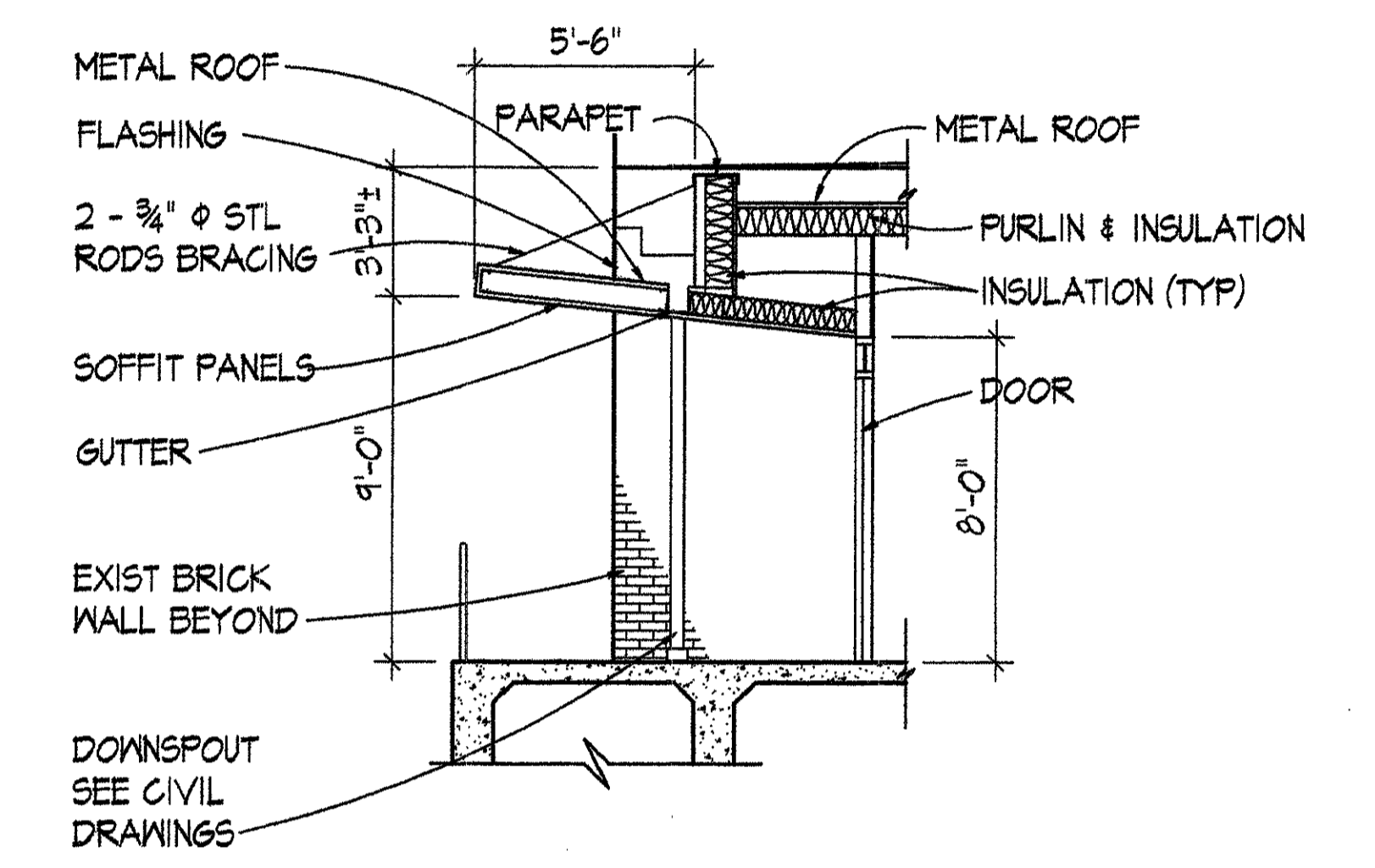
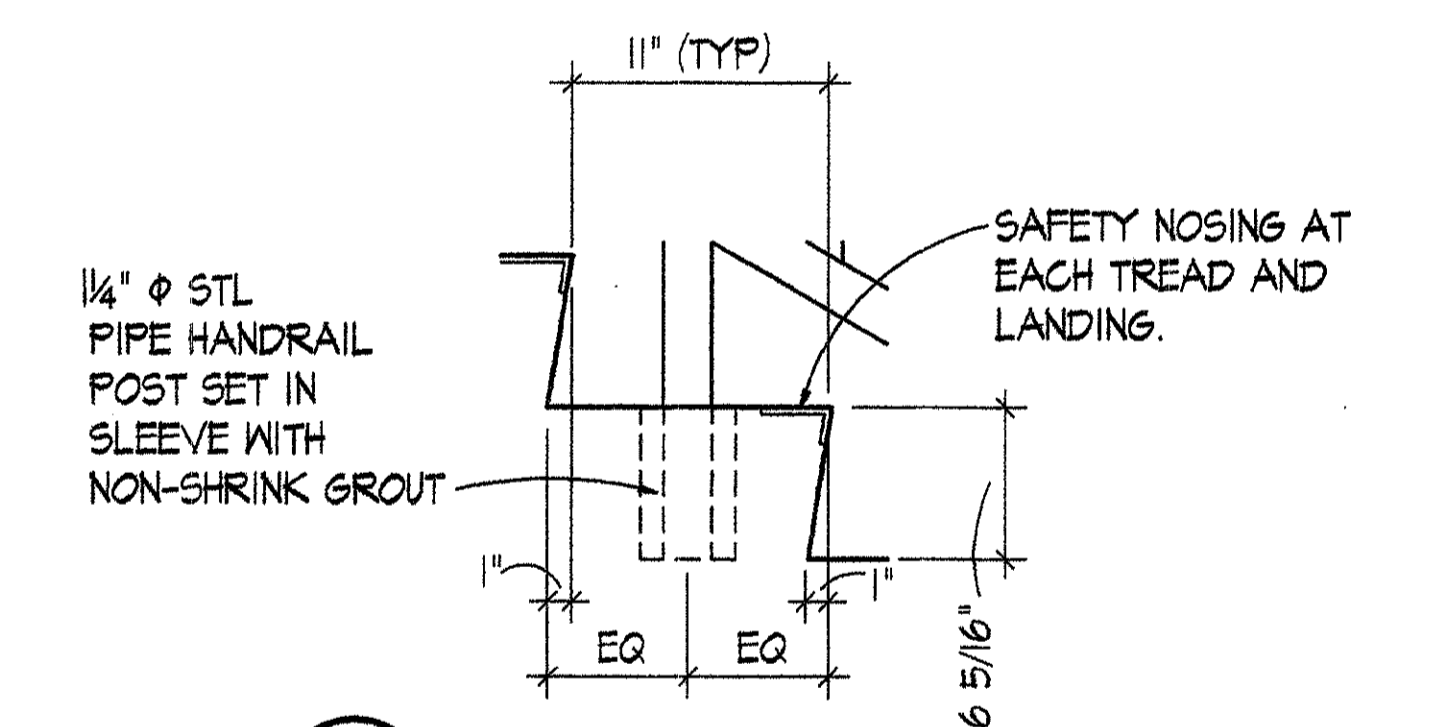


2 HANDRAIL DETAIL
 A2A2 SCALE: 1/4" = 1'-0"



3 CANOPY SECTION
 A2A2 SCALE: 1/4" = 1'-0"



4 CONCRETE STEP DETAIL
 A2A2 SCALE: 1 1/2" = 1'-0"

1 FIRST FLOOR NEW WORK PLAN
 A2A2 SCALE: 1/8" = 1'-0"

DRAWING NOTES: (APPLY TO THIS DRAWING ONLY)

- 1 WALL GUARD RAIL MOUNTED TOP 3'-6" AFF
- 2 SEMI-RECESSED FIRE EXTINGUISHER CABINET. SEE 15 A2A9
- 3 2x3' PRE-FRAMED TACKBOARD MOUNTED BOTTOM 3'-6" AFF.
- 4 1" THICK PLAM ADJUSTABLE SHELVES. SEE 18 A2A6
- 5 COL - 1A, COL - 1B, COL - 2A, COL - 2B, COL - 3A, COL - 3B, COL - 4A, COL - 4B, COL - 5A, AND COL - 5B DETAILS. SEE SHEET A8.
- 6 NEW DOWNSPOUT CONNECTED TO EXIST CAST IRON BOOT.
- 7 3'-0"x 4'-0" DRY MARKER BOARD. BOTTOM AT 3'-6" AFF.

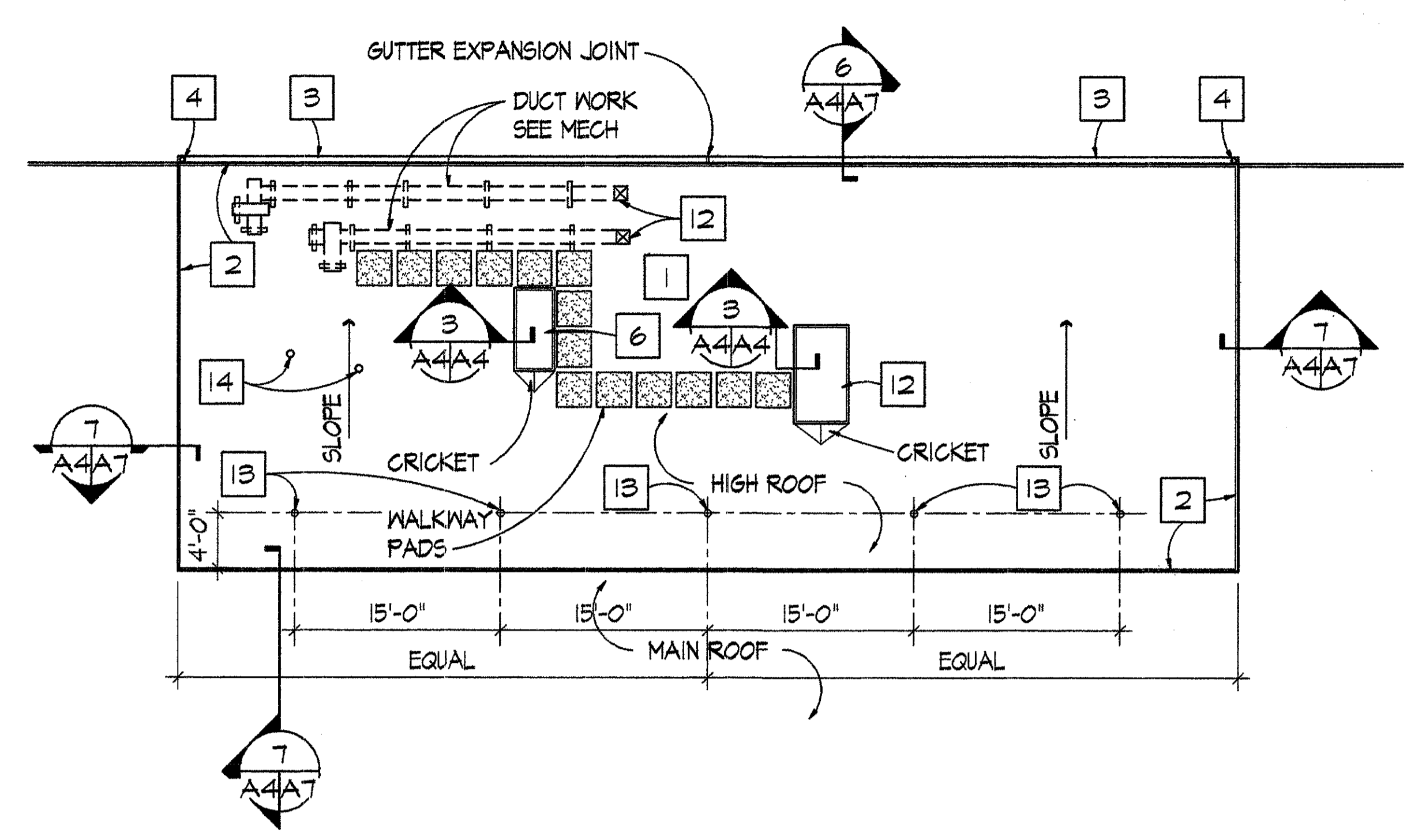
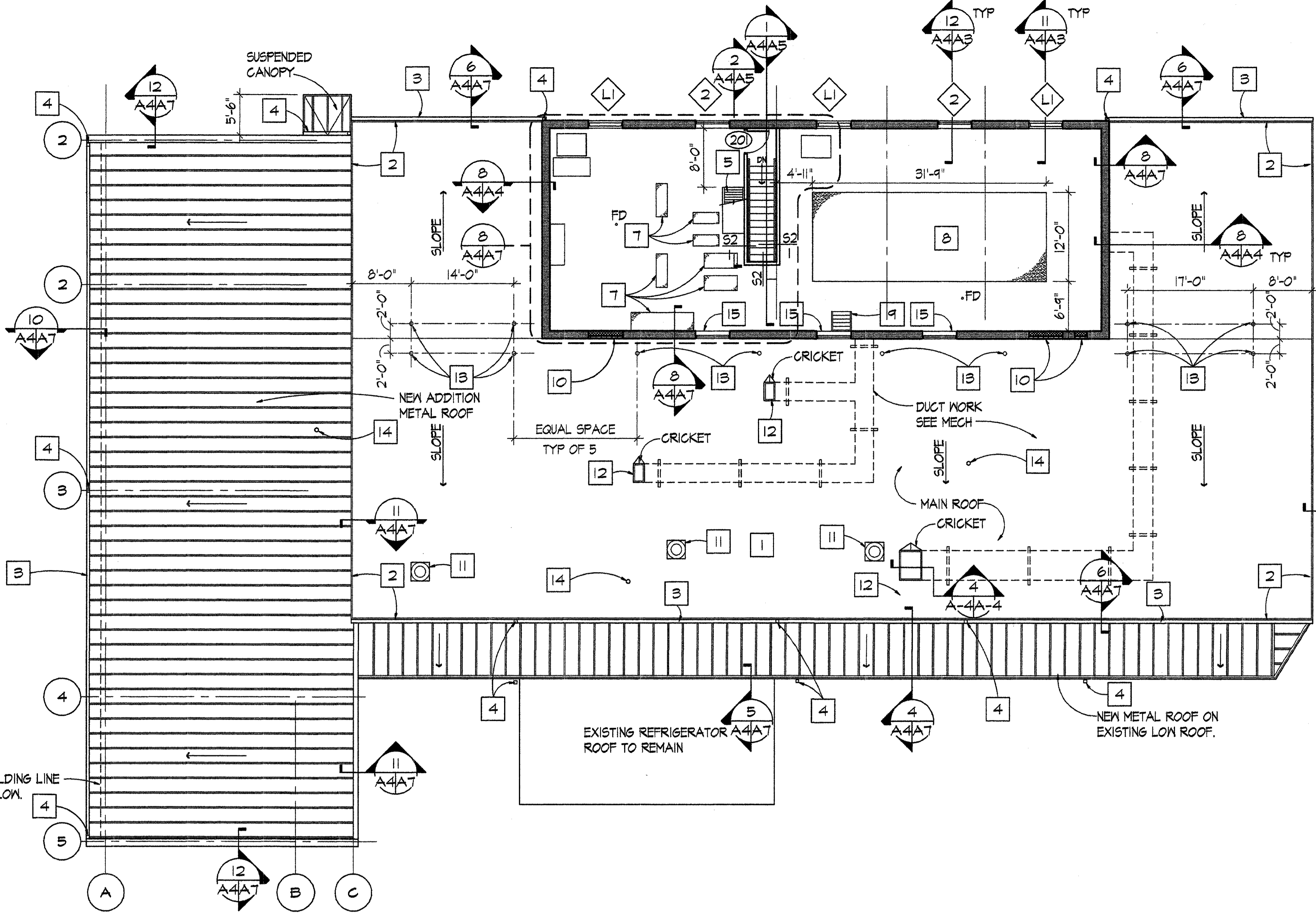
GENERAL CONSTRUCTION NOTES:

- 1. CHECK AND VERIFY ALL DIMENSIONS AND CONDITIONS AT THE JOB SITE BEFORE STARTING THE WORK.
- 2. DIMENSIONS ARE FROM FACE OF GMB OR EXPOSED MASONRY UNLESS OTHERWISE NOTED.
- 3. EVERY EFFORT HAS BEEN MADE TO IDENTIFY THOSE DIMENSIONS WHICH REQUIRE FIELD VERIFICATION WITH ± DIMENSIONS NOT SO NOTED ARE INTENDED TO BE HELD. FIELD VERIFY ALL DIMENSIONS PRIOR TO FABRICATION OR INSTALLATION OF BUILDING COMPONENTS.
- 4. WHERE DISCREPANCIES OCCUR BETWEEN VARIOUS DRAWINGS OBTAIN CLARIFICATION FROM THE CONTRACTING OFFICER'S REPRESENTATIVE BEFORE PROCEEDING WITH THE WORK.
- 5. WHERE SPECIFIC DETAILING IS NOT SHOWN, EXECUTE THE CONSTRUCTION IN AN APPROPRIATE, WORKMANLIKE MANNER CONSISTENT WITH THE OTHER DETAILING SHOWN.
- 6. PROVIDE BLOCKING WITHIN PARTITIONS FOR ALL WALL MOUNTED FURNISHINGS, EQUIPMENT AND ACCESSORIES.
- 7. ROOM NAMES INDICATED ON DRAWINGS BASED ON PRESENT LAB USE INFORMATION. CONTRACTOR TO COORDINATE WITH CONTRACTING OFFICER'S REPRESENTATIVE FOR PERMANENT IDENTIFICATION.
- 8. COORDINATE DEMOLITION, PATCHING AND FINISHING WITH MECHANICAL AND ELECTRICAL REQUIREMENTS.

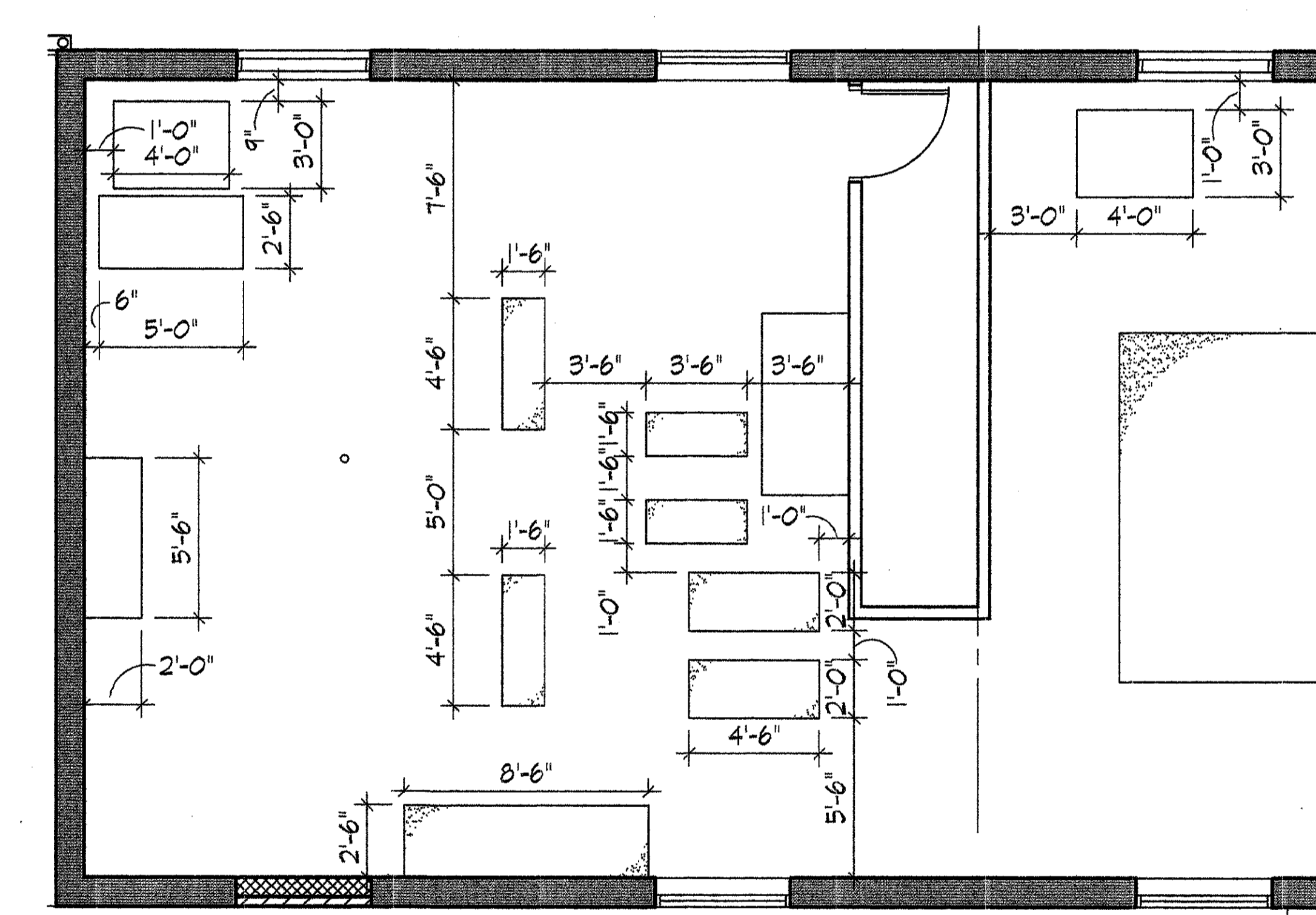
MARSHALL CRAFT ASSOCIATES, INC.
 ARCHITECTURE / INTERIOR DESIGN / PLANNING
 6112 YORK ROAD BALTIMORE, MARYLAND 21212-2611
 410 532 3131 FAX 410 532 9206

Professional Engineer Seal for Chris Tricker, State of Maryland, No. 3827-E, dated 8/21/95.

REVISION		DATE	DESCRIPTION	BY
REVIEWED BY		WALTER REED ARMY MEDICAL CENTER DIRECTORATE OF PUBLIC WORKS WASHINGTON, DC 20307-5001		
FIRE CHIEF		DESIGN BY	BUILDING #512 RENOVATION FIRST FLOOR NEW WORK PLAN	
CH OPERATIONS DIV		REVIEWED & COORDINATED		
CH INSPECTION BR.		PROJECT LEADER		
SAFETY OFFICER		ENGINEER		
PROVIDING MEDICINE		DATE	APPROVED BY:	
SCALE		AS NOTED	PROJECT NO.	FE-00124-5J
			SHEET	6 OF 45



2 HIGH ROOF PLAN
 SCALE: 1/8" = 1'-0"



8 CONCRETE PAD LAYOUT
 SCALE: 1/4" = 1'-0"

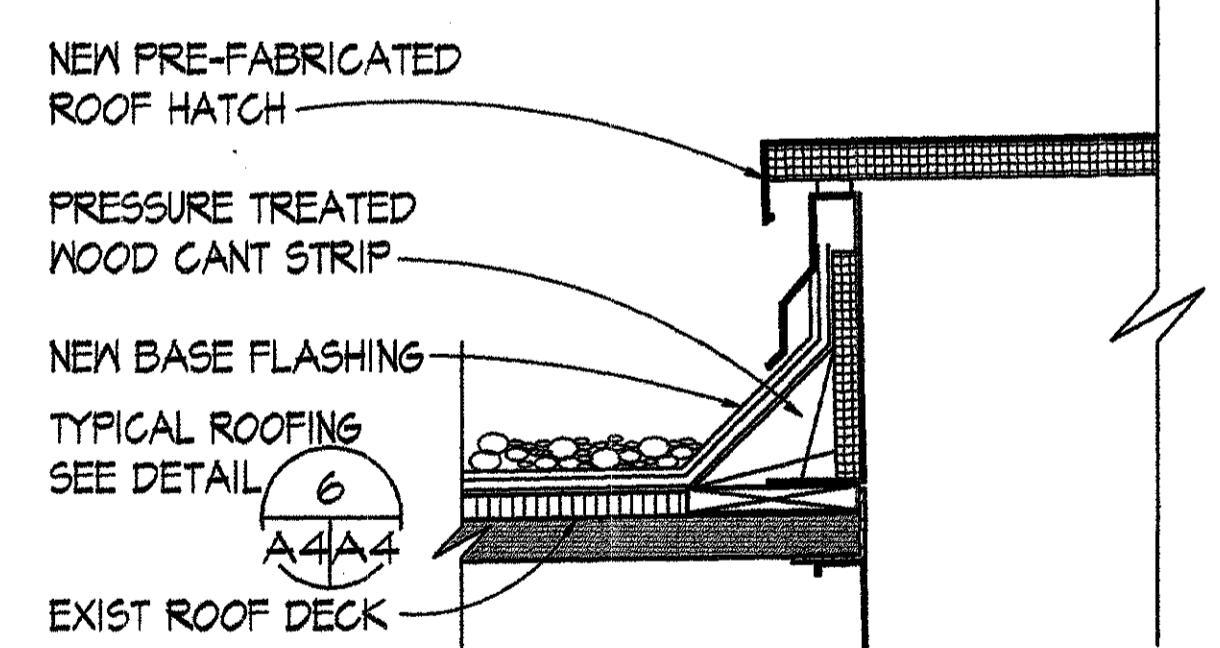
1 SECOND FLOOR NEW WORK PLAN AND ROOF PLAN
 SCALE: 1/8" = 1'-0"

DRAWING NOTES: (APPLY TO THIS DRAWING ONLY)

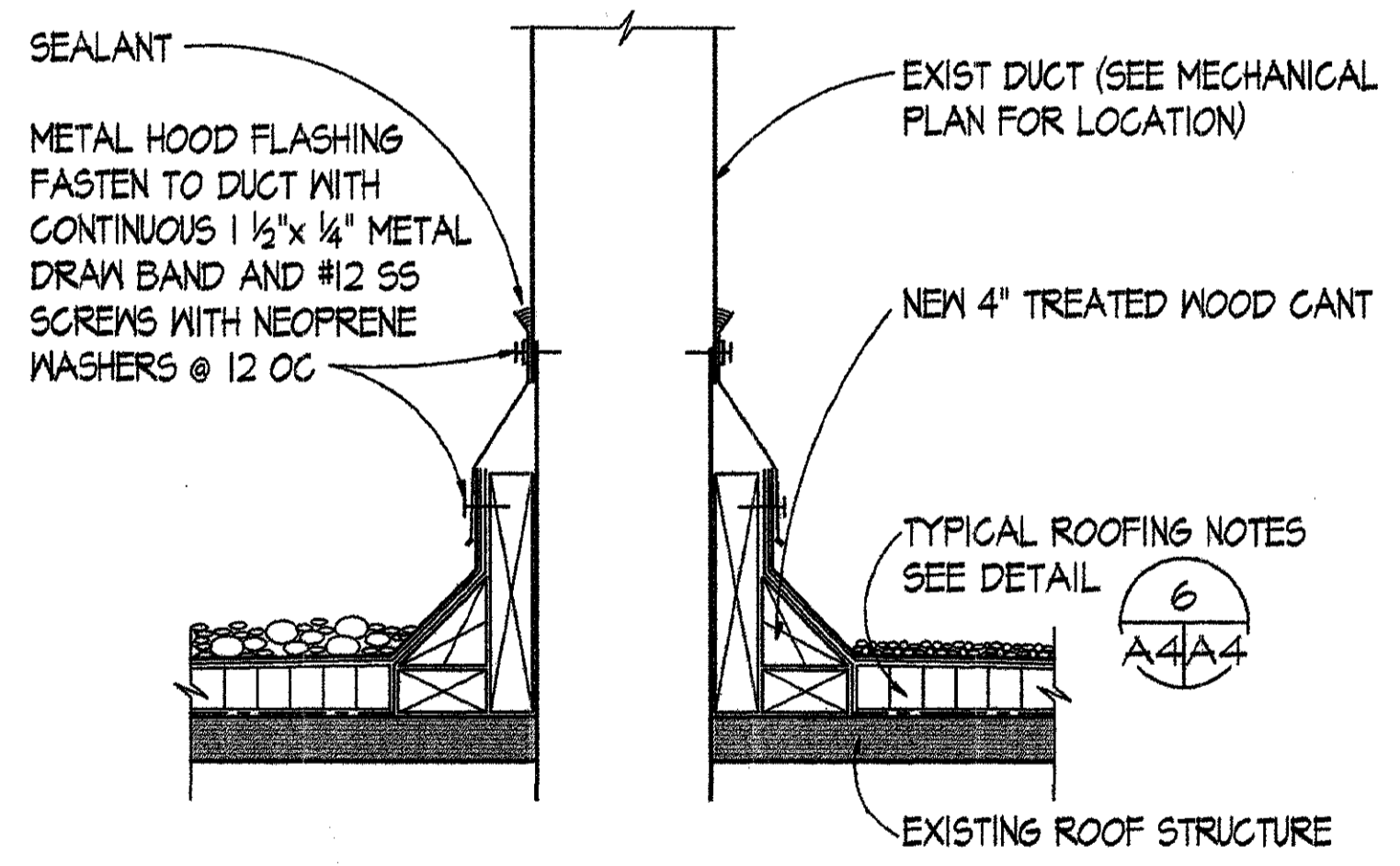
- 1 NEW BUILT-UP ROOF ON EXISTING ROOF DECK.
- 2 METAL GRAVEL STOP.
- 3 METAL GUTTER.
- 4 METAL DOWNSPOUT.
- 5 SHIP LADDER TO HIGH ROOF.
- 6 METAL ROOF HATCH.
- 7 4" HIGH CONG PAD WITH #4 REBAR 12" OC EACH WAY.
- 8 AIR HANDLING UNIT CONCRETE PAD 4" HIGH WITH #4 REBAR 18" OC EACHWAY
- 9 EXISTING METAL STAIR TO REMAIN. CLEAN AND REPAIR.
- 10 MASONRY INFILL. 4" FACE BRICK AND 8" CMU BACK.
- 11 EXHAUST FAN. SEE MECHANICAL AND ELECTRICAL DRAWINGS.
- 12 DUCT WORK PENETRATIONS. SEE MECHANICAL DRAWINGS.
- 13 6" Ø ROOF VENT SEE NRCA TYPICAL DETAIL. BUR-V
- 14 VENT PIPE SEE MECHANICAL DRAWINGS.
- 15 EXISTING STEEL WINDOWS TO REMAIN. CLEAN AND REPAIR.

GENERAL CONSTRUCTION NOTES:

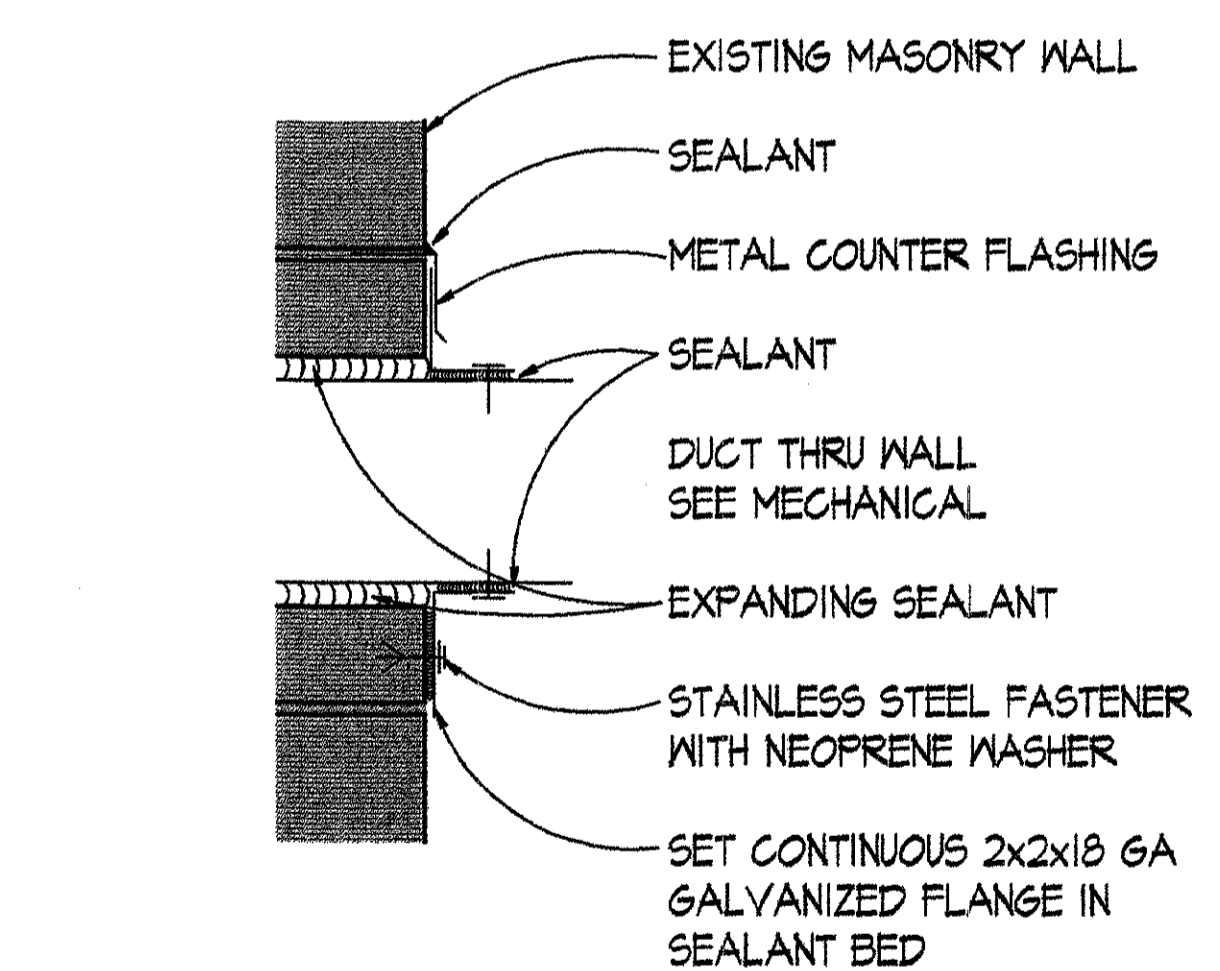
1. CLOSE ABANDONED EXIST ROOF OPENINGS USING 1 1/2" x 16 GAUGE, TYPE B, GALVANIZED STEEL ROOF DECK. REPAIR PANEL WIDTH SHALL MATCH THE OPENING AND LENGTH SHALL BE FROM CENTERLINE - TO - CENTERLINE OF THE EXIST JOISTS BEYOND BOTH SIDES OF THE OPENING (DIMENSIONS TO BE FIELD DETERMINED, AND EXIST OPENING SIZE TO BE EXTENDED AS REQUIRED). ATTACH ROOF DECK IN ACCORDANCE WITH SECTION 05300 OF THE PROJECT SPECIFICATION.



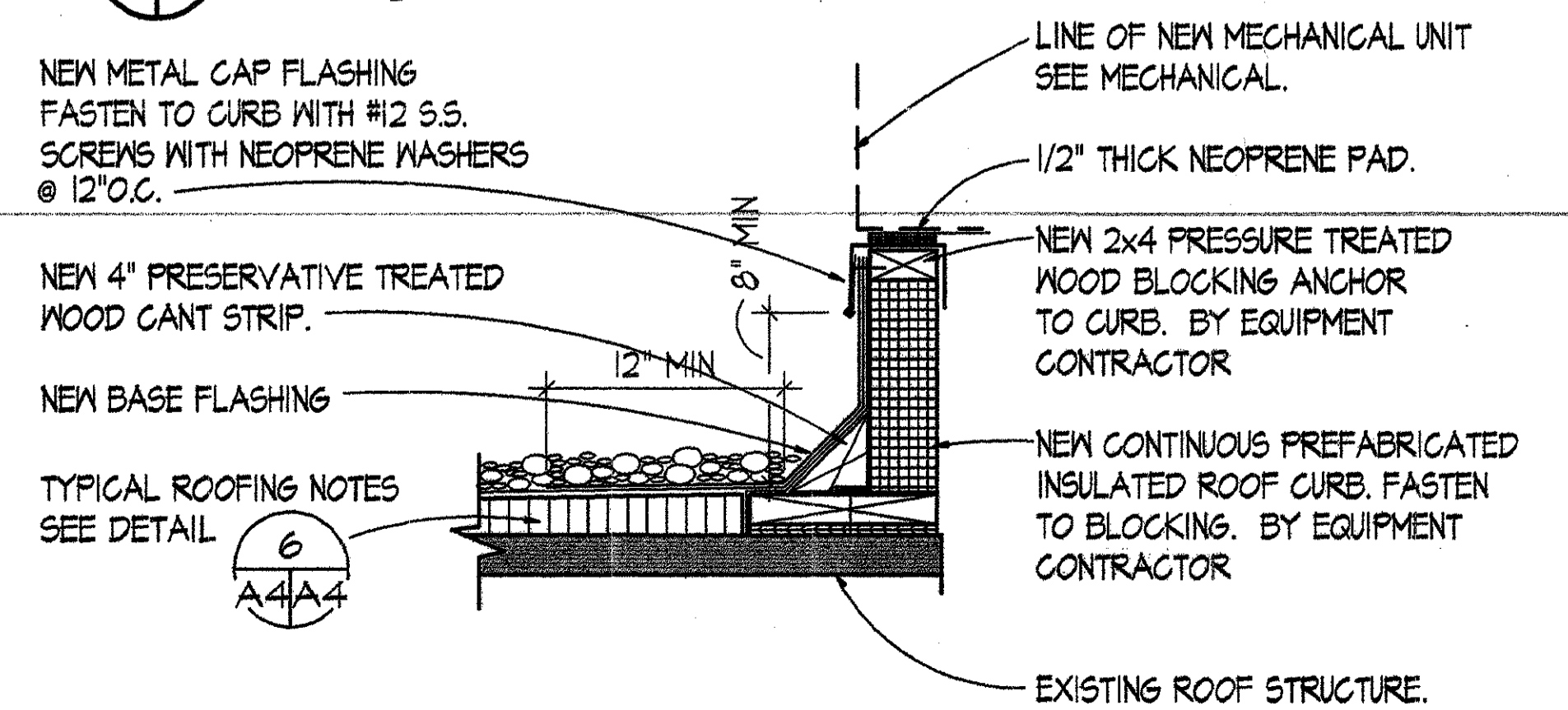
3 ROOF HATCH FLASHING DETAIL
 SCALE: 1/2" = 1'-0"



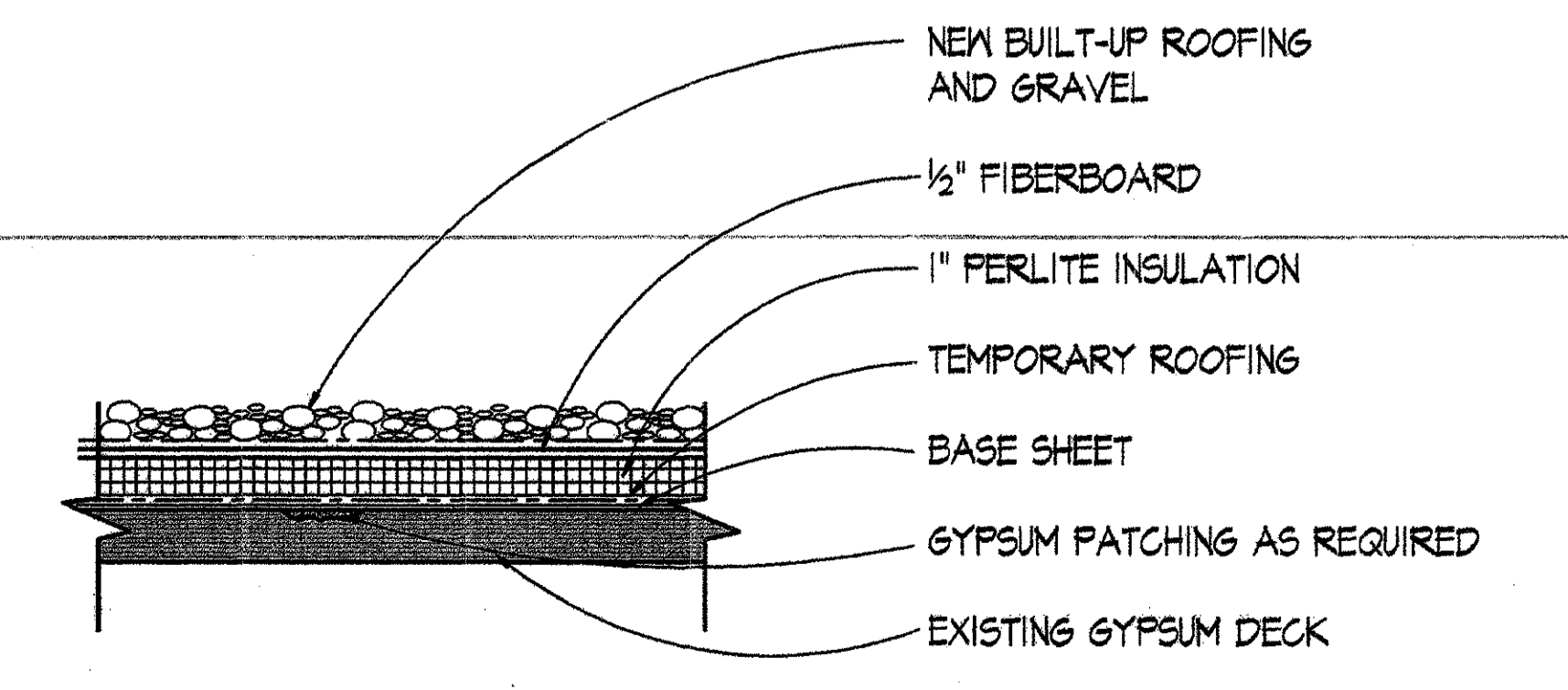
4 DUCT PENETRATION DETAIL
 SCALE: 1/2" = 1'-0"



7 DUCT PENETRATION THRU EXTERIOR WALL DETAIL
 SCALE: 1/2" = 1'-0"



5 PREFABRICATED EQUIPMENT CURB
 SCALE: 1/2" = 1'-0"



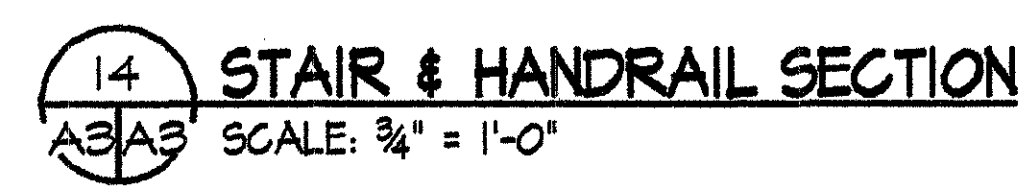
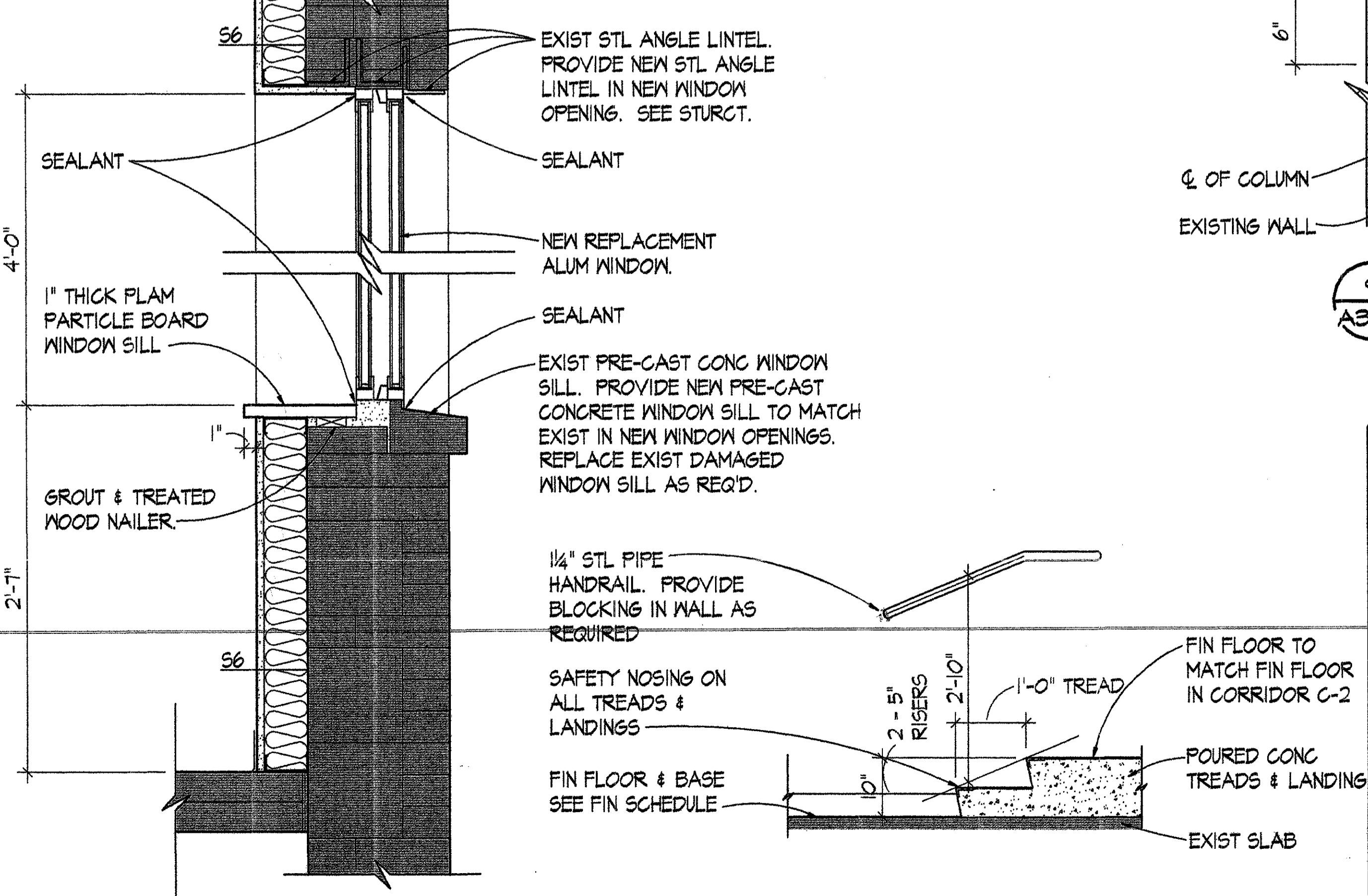
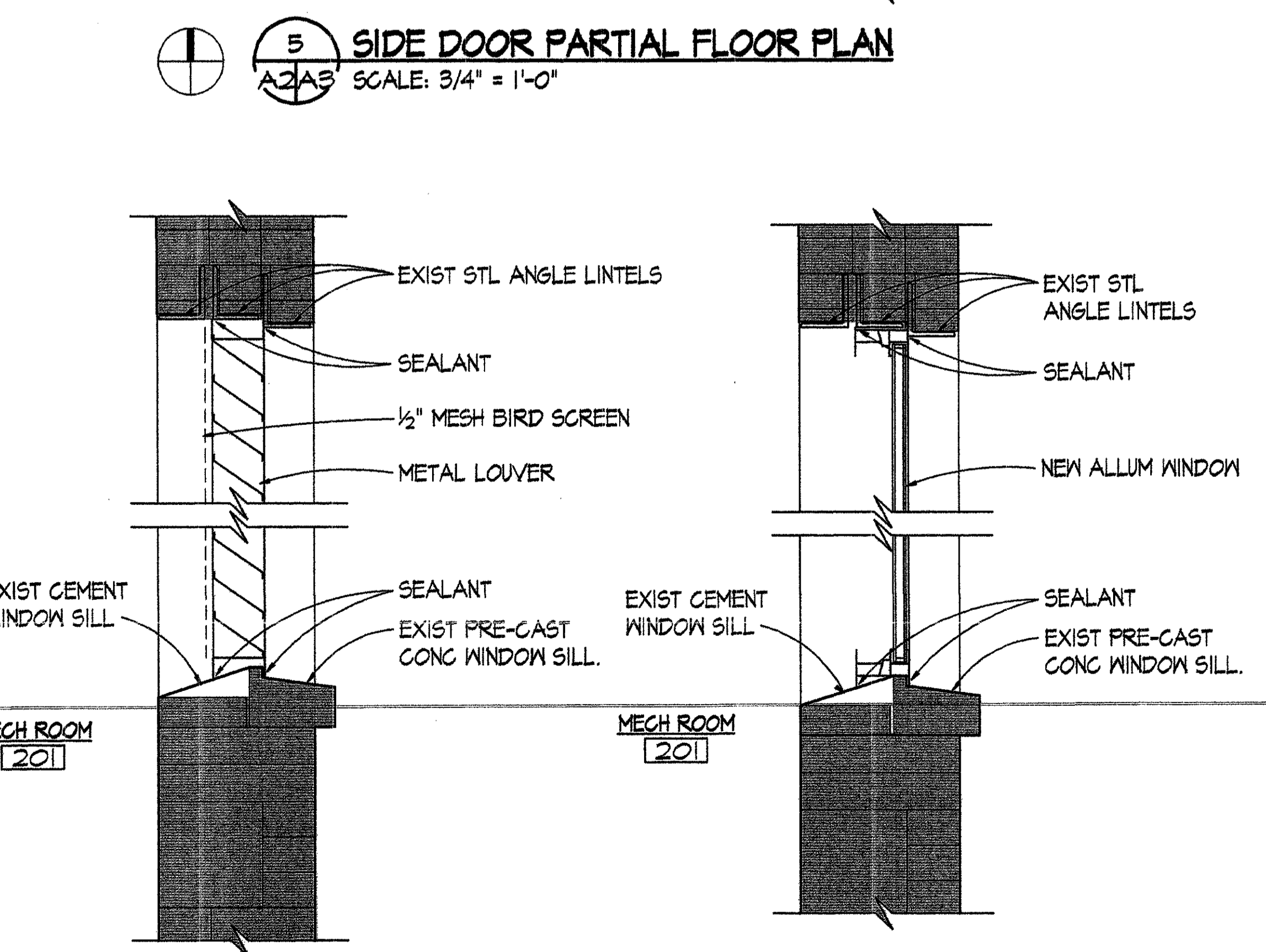
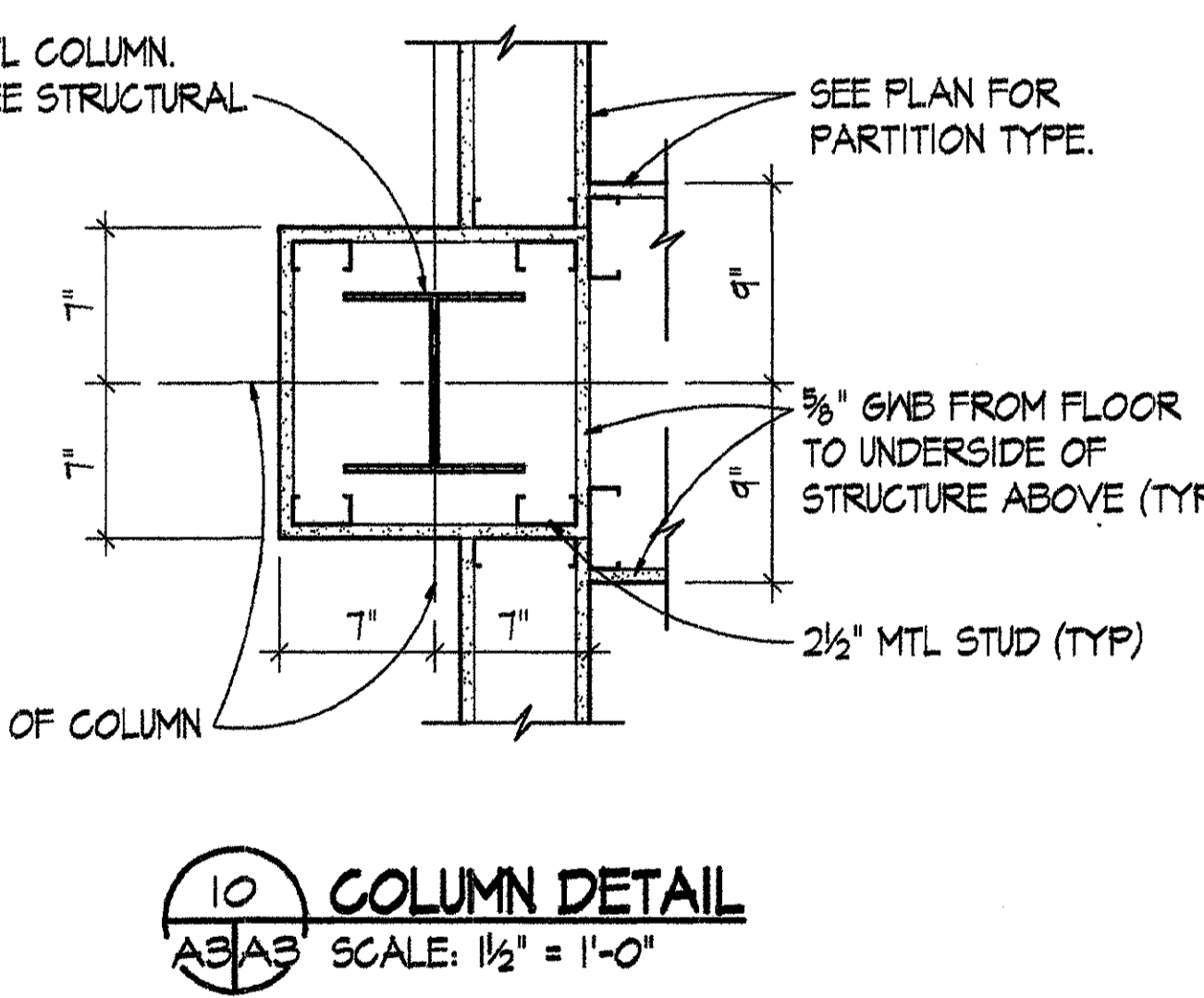
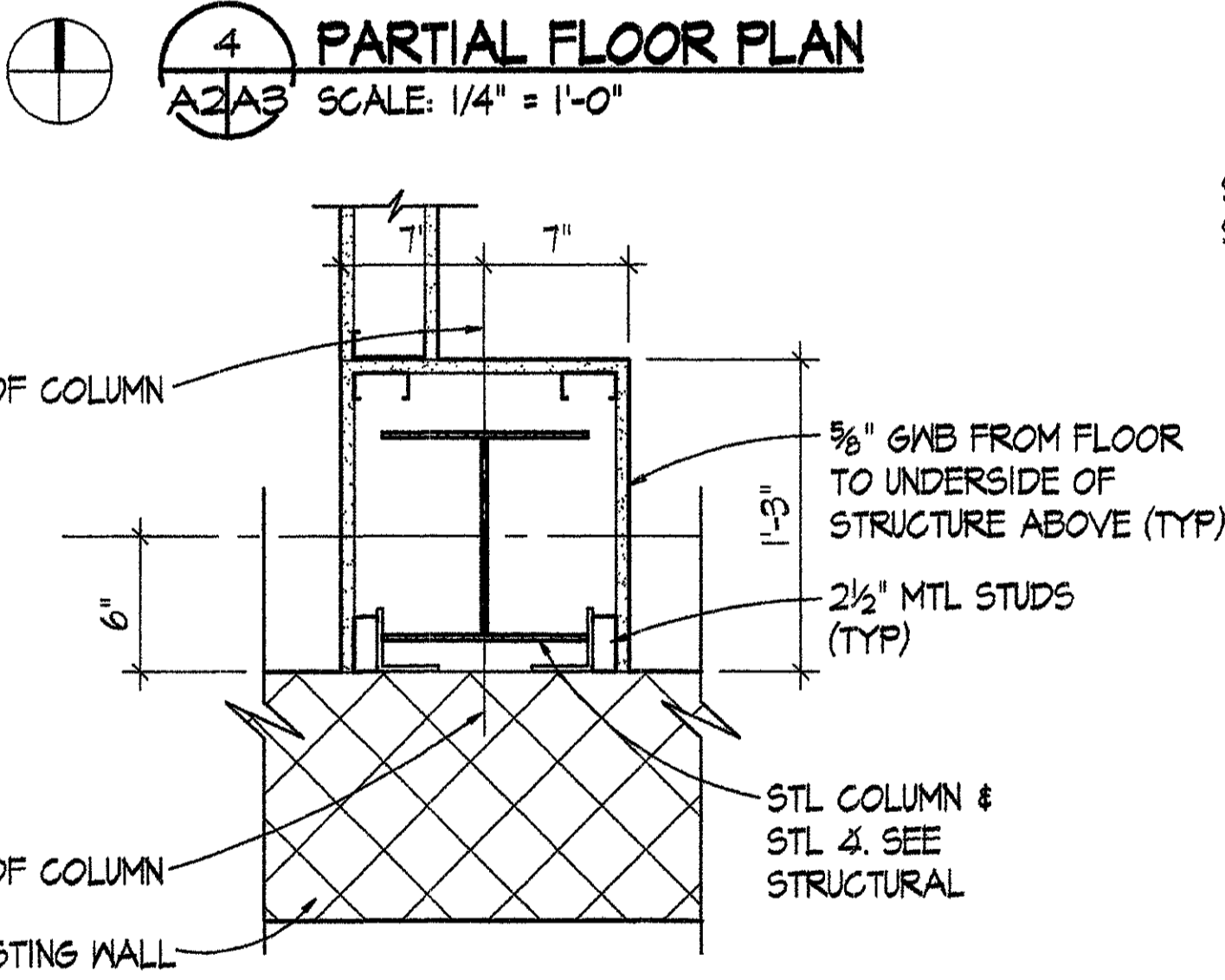
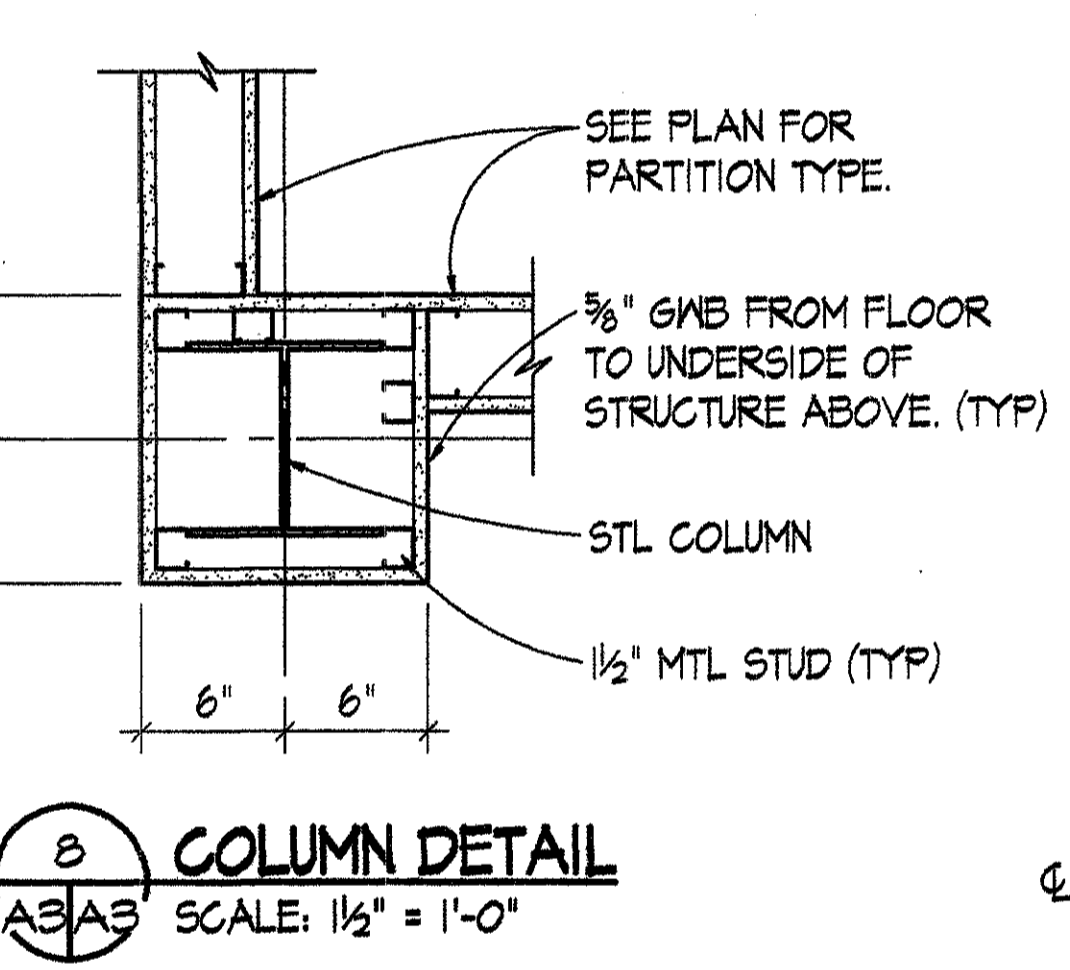
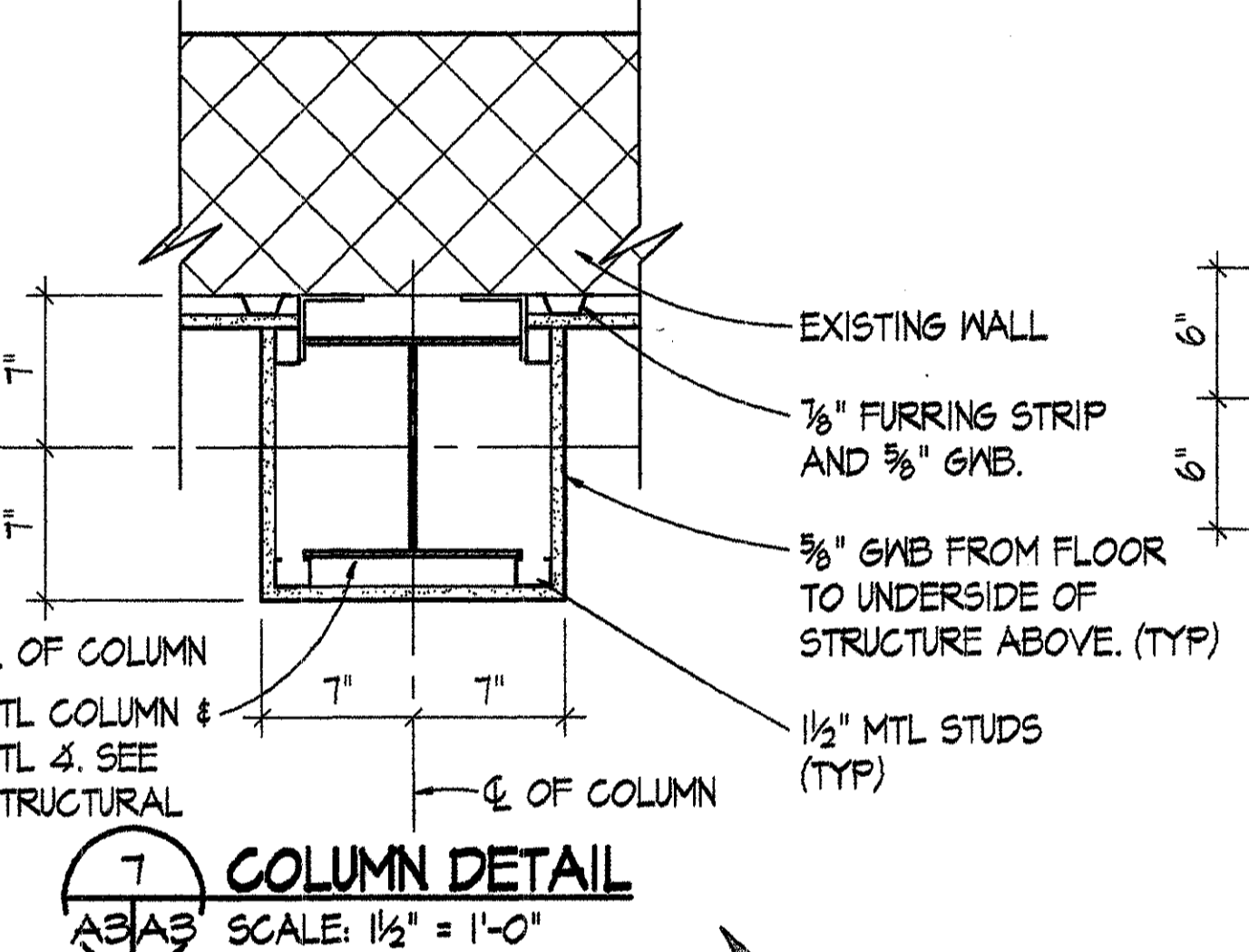
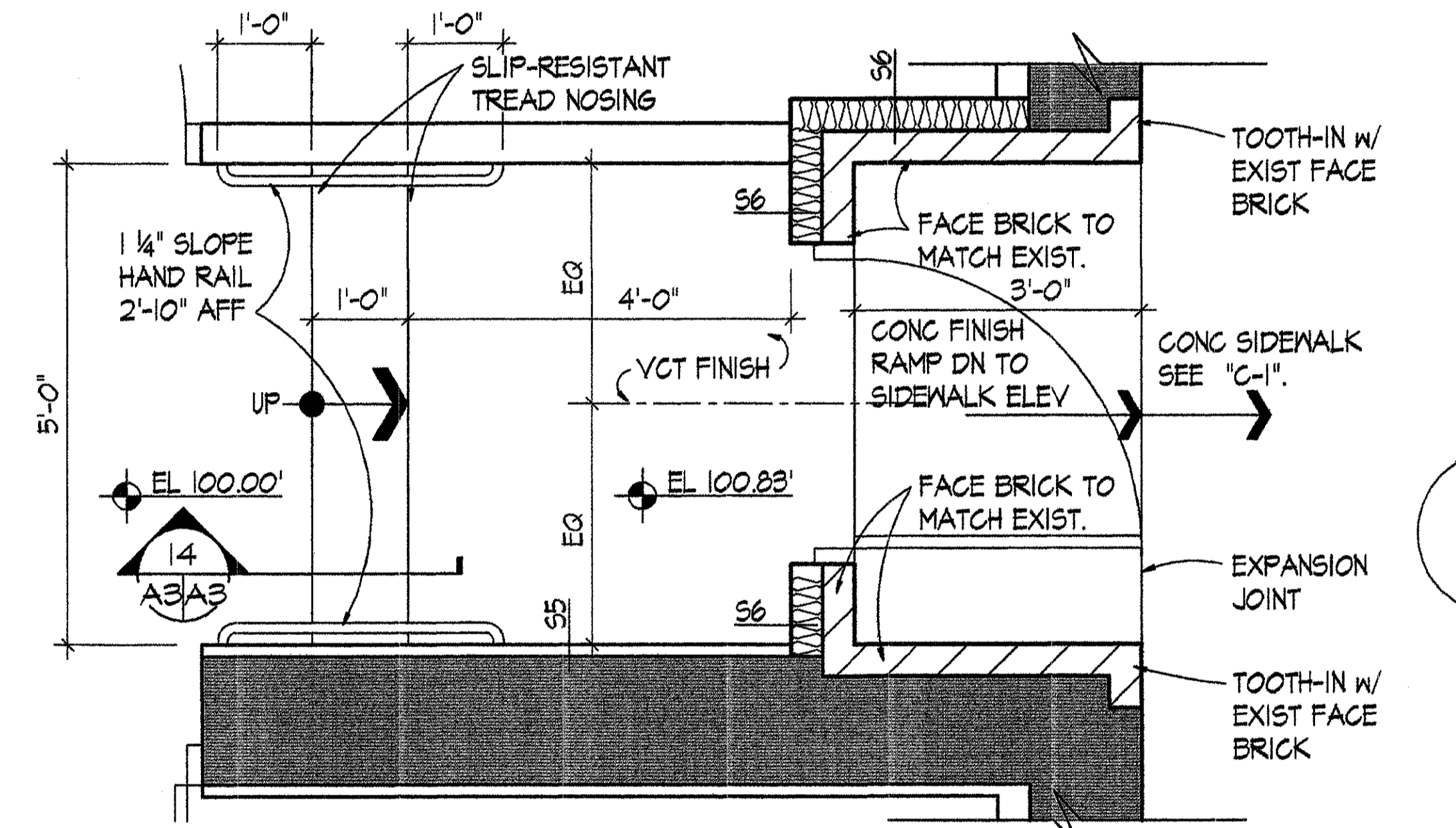
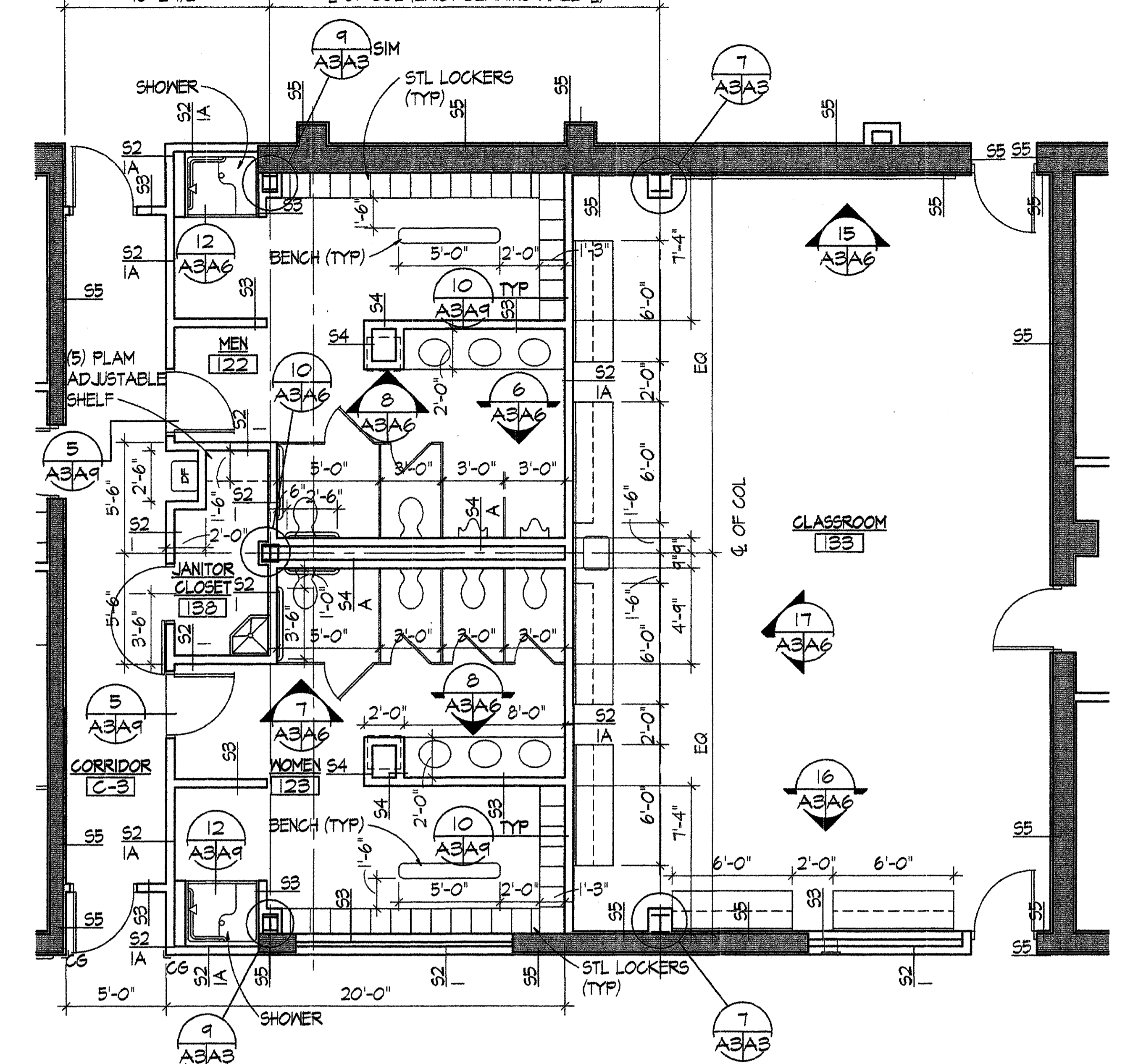
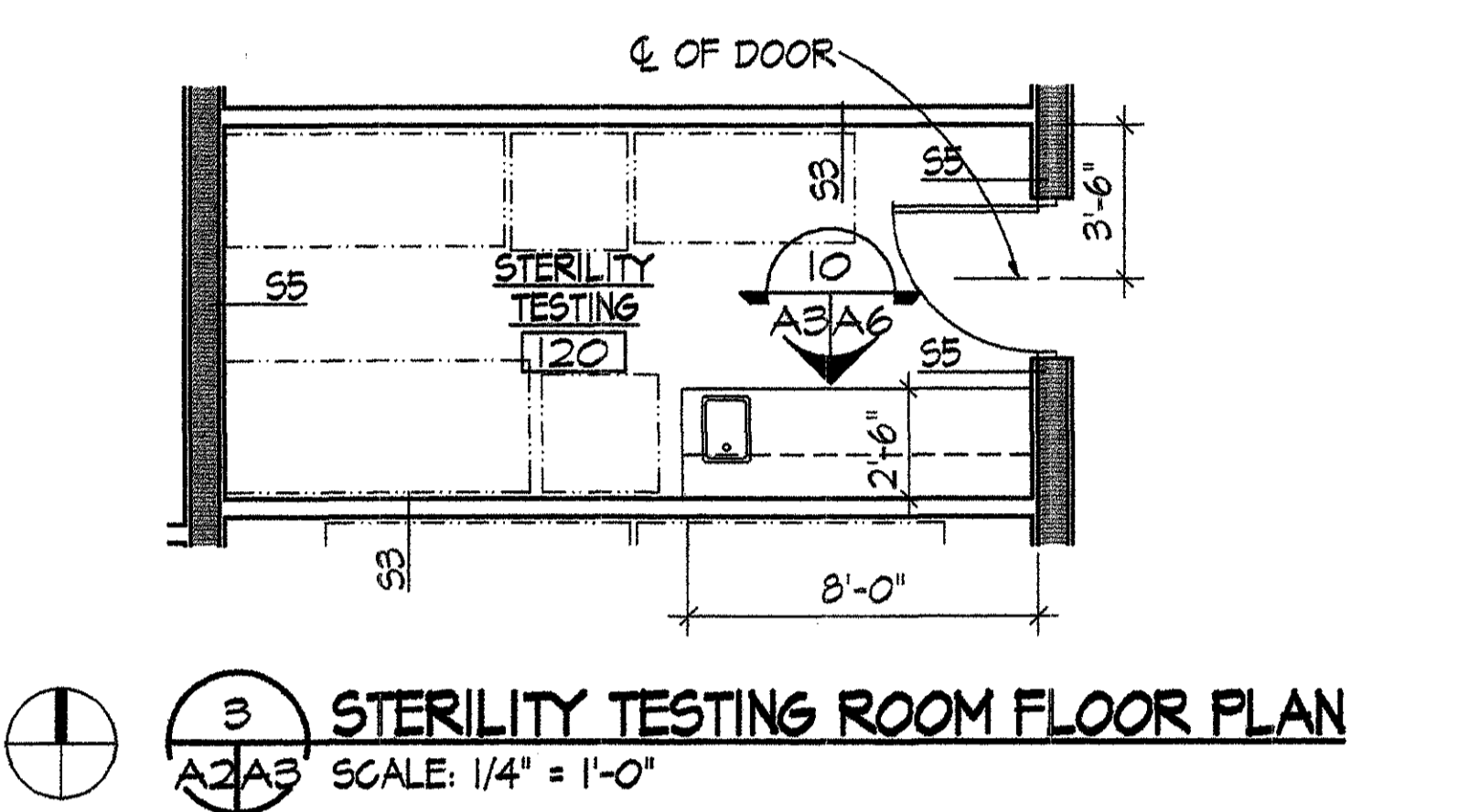
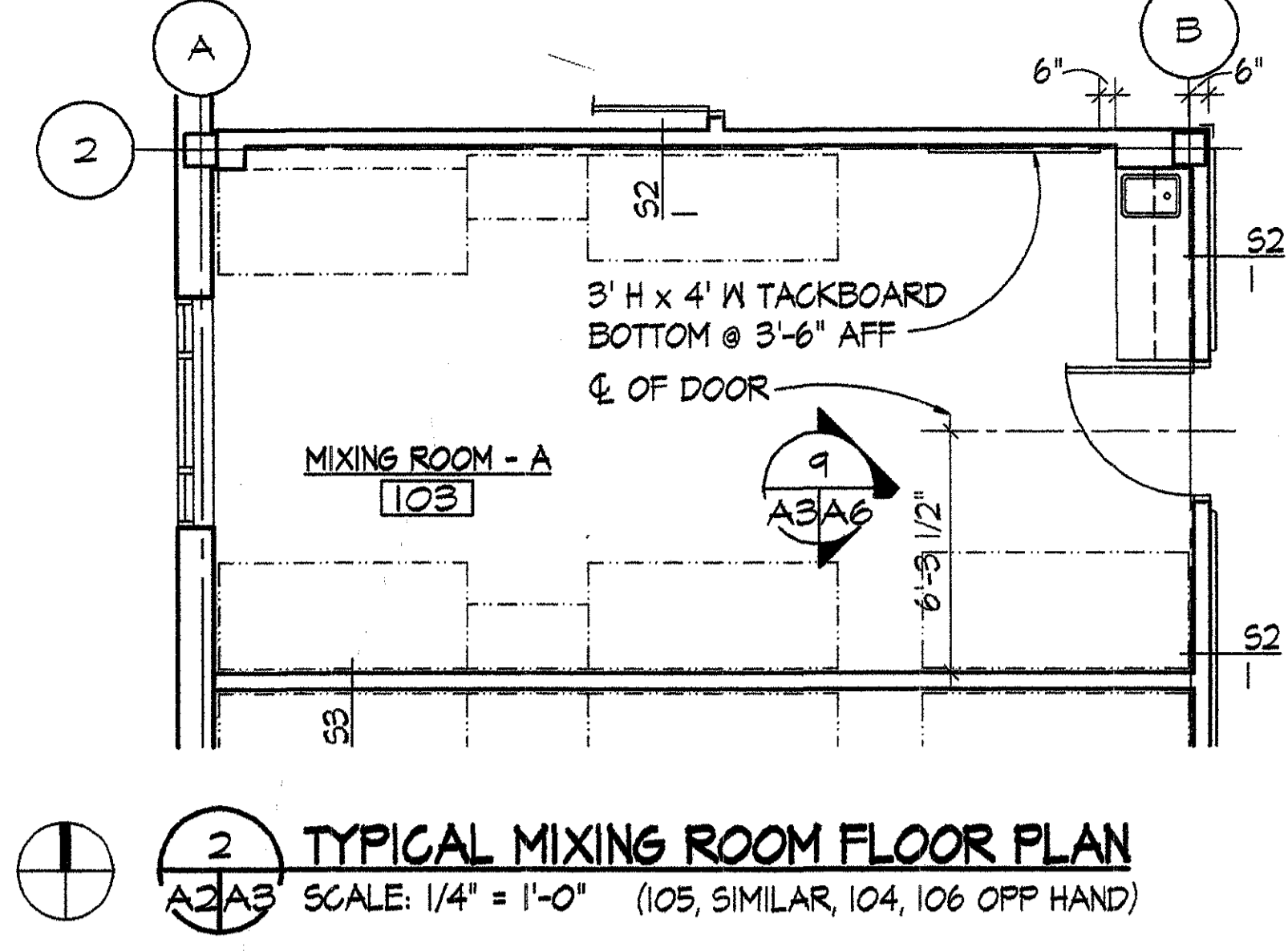
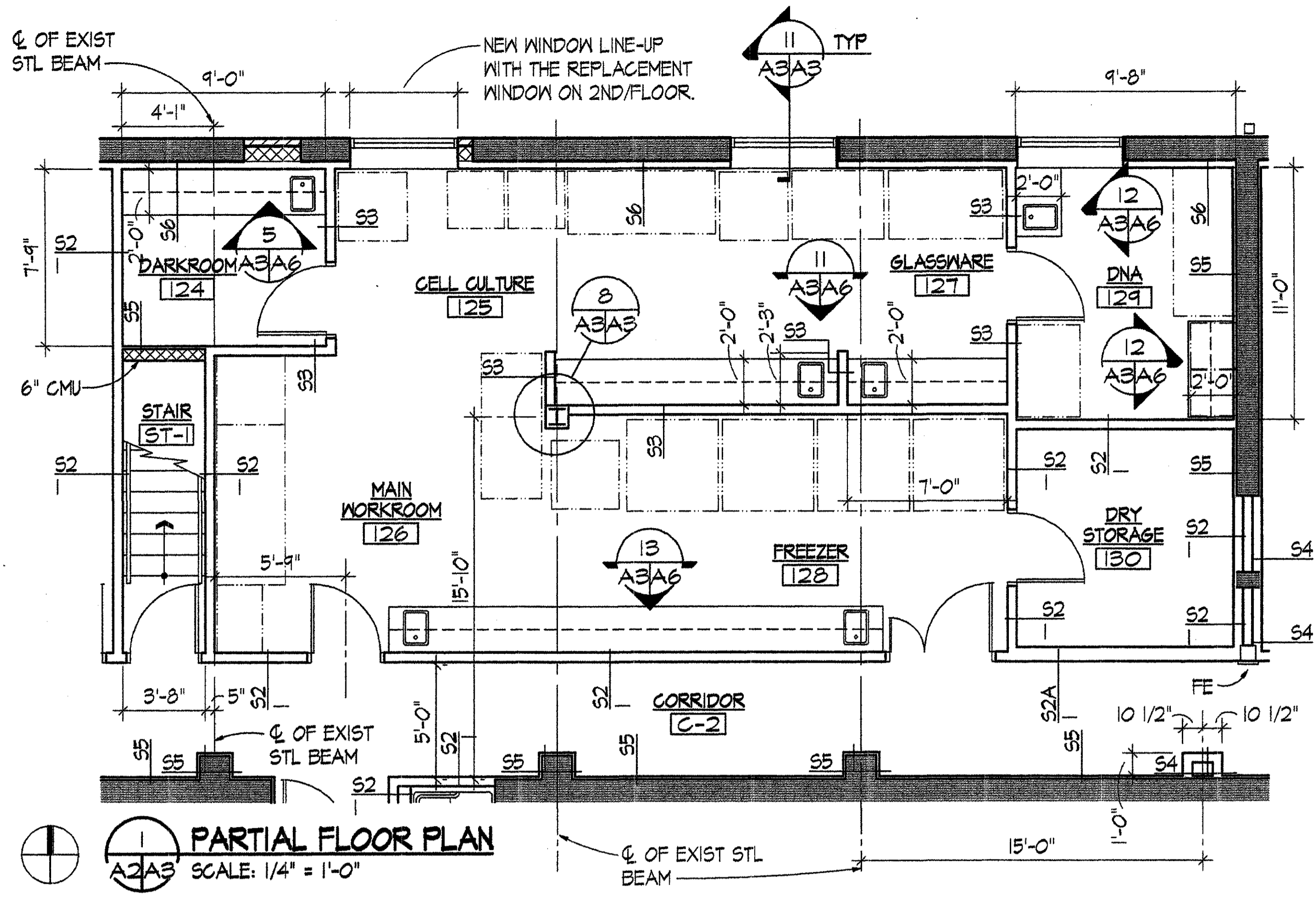
6 NEW ROOFING ON EXISTING ROOF DECK TYP DETAIL
 SCALE: NTS

MARSHALL CRAFT ASSOCIATES, INC.
 ARCHITECTURE / INTERIOR DESIGN / PLANNING
 6112 YORK ROAD BALTIMORE, MARYLAND 21212-2611
 410 532 2131 FAX 410 532 9266

3827-A
 8/2/95

CAUTION: EXCEPT WHERE DIMENSIONS ARE INDICATED, GRAPHIC SCALES MUST BE USED.

REVISION		DATE		DESCRIPTION		BY	
REVIEWED BY				WALTER REED ARMY MEDICAL CENTER DIRECTORATE OF PUBLIC WORKS WASHINGTON, DC 20307-5001			
FIRE CHIEF		DRAWN BY		DESIGN BY		PROJECT LEADER	
CH OPERATIONS DIV		REVIEWED & COORDINATED		ENGRD CHK BY		USING AGENCY	
CH INSPECTION DIV		DATE		SUBMITTED BY		APPROVED BY	
SAFETY OFFICER		DATE		CHIEF, ENGINEERING, PLANS & SERVICES DIV.		DATE	
PREVENTIVE MEDICINE		SCALE		PROJECT NO.		SHEET	
		1/8" = 1'-0"		FE-00124-5J		8 OF 45	



MARSHALL CRAFT ASSOCIATES, INC. ARCHITECTURE / INTERIOR DESIGN / PLANNING 6112 YORK ROAD BALTIMORE, MARYLAND 21212-2611 410 582 8181 Fax 410 582 9206		A3	
		WALTER REED ARMY MEDICAL CENTER DIRECTORATE OF PUBLIC WORKS WASHINGTON, DC 20307-5001	
REVISION	DATE	DESCRIPTION	
REVIEWED BY		DRAWN BY	
FIN CHIEF		DESIGN BY	
CH OPERATIONS DIV		REVIEWED & COORDINATED	
CH INSPECTION DIV		PROJECT LEADER	
SAFETY OFFICER		DESIGN CHIEF BY	
SUBMITTED BY		USING AGENCY	
DATE		APPROVED BY	
PREVENTIVE MEDICINE		DATE	
SCALE		FACILITIES ENGINEER	
PROJECT NO.		DATE	
FE-00124-5J		SHEET 7 OF 45	