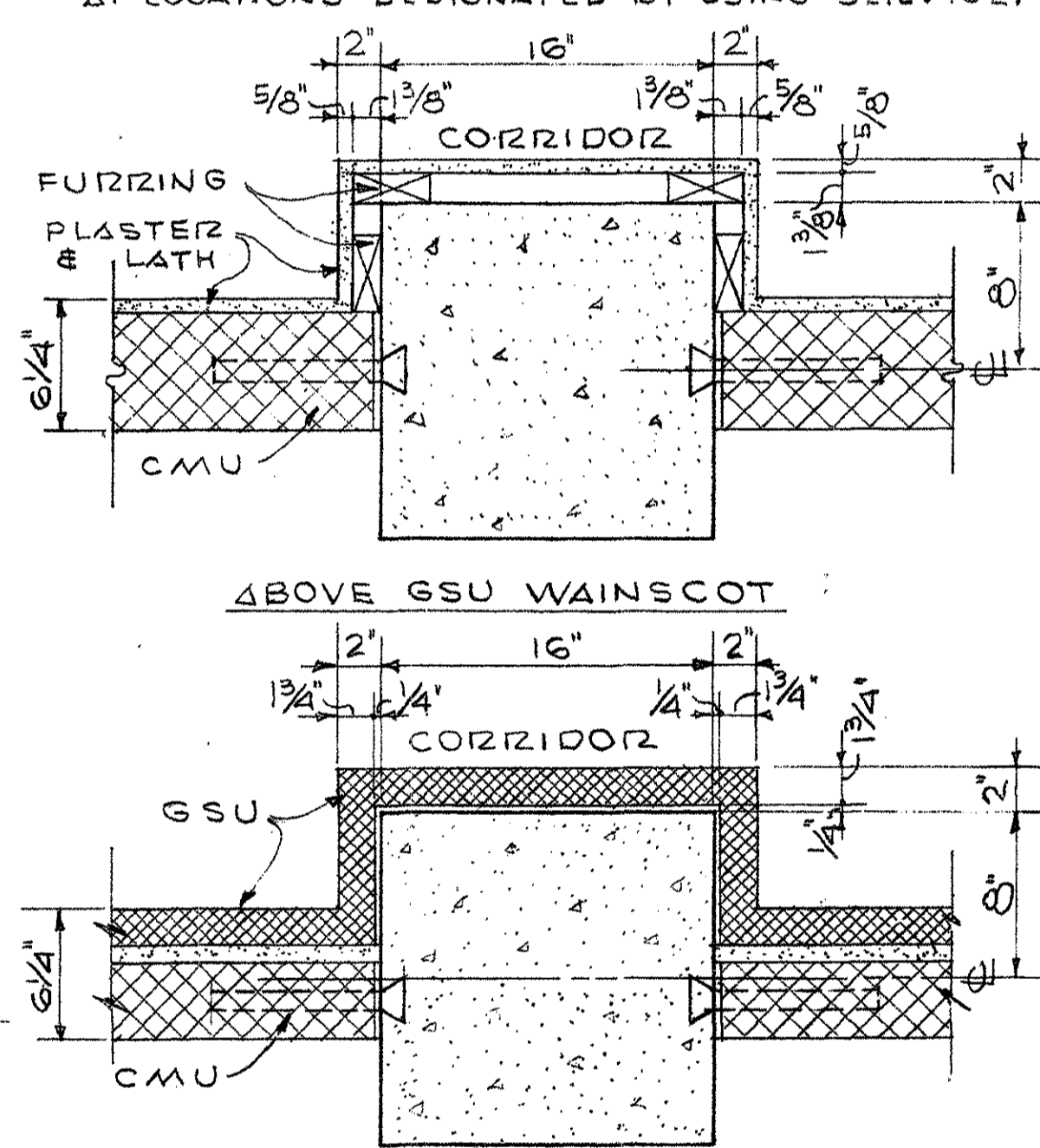


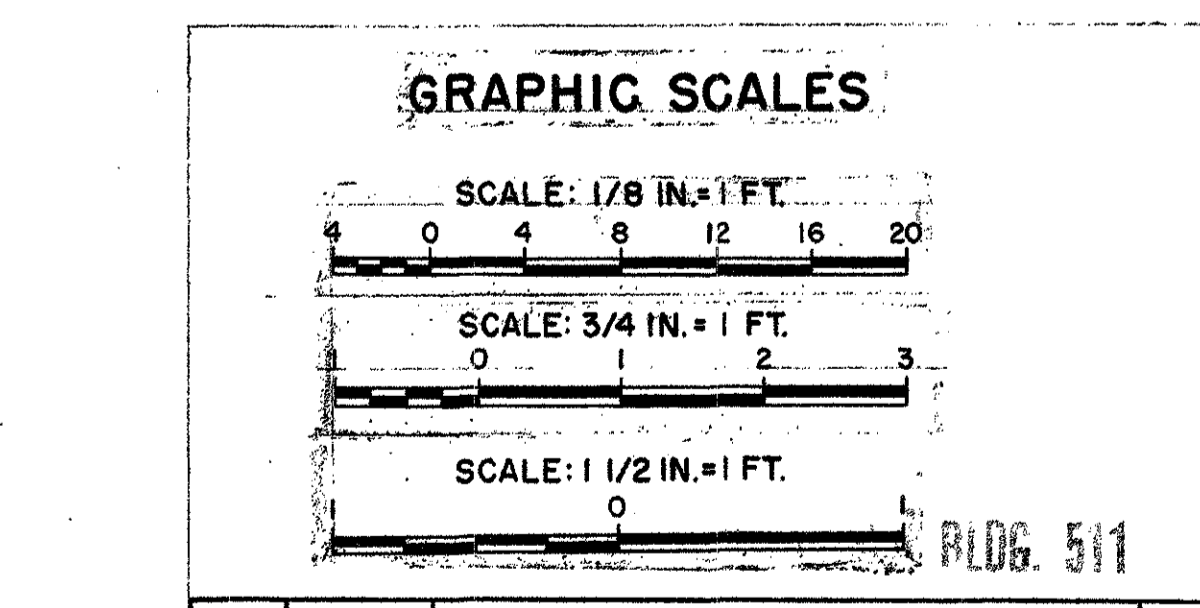


- NOTES:**
- FOR ENLARGED ENTRANCE PLANS & DETAILS SEE SHEET NO. A-17.
 - FOR DETAILS OF LOADING DOCK, STEPS & DOCK LEVELER SEE SHEET NO. A-16.
 - FOR ENLARGED PLANS OF PHARMACY NO. 111, TREATMENT NO. 112, ISOLATION NO. 113, REFRIGERATOR, SERVICE & STORAGE NO. 126, ISOLATION NO. 128, TREATMENT NO. 127, LABORATORY NO. 109, LIBRARY NO. 110, X-RAY ROOM NO. 114, DARK ROOM NO. 114A, PIZE-SURGERY NO. 115, SURGERY NO. 116, RECOVERY NO. 118, REC-ROPSY NO. 117, FOOD STORAGE NO. 119, MACHINE ROOM NO. 119A, KITCHEN NO. 120, ELEVATOR, JANITOR CLOSET NO. 136, MEN'S TOILET & LOCKERS NO. 121, MEN'S TOILET NO. 123, WOMEN'S LOUNGE NO. 136, WOMEN'S TOILET NO. 124, CLOSET, & CLASSROOM NO. 108 SEE SHEET NO. A-10.
 - FOR ENLARGED PLANS & DETAILS OF STAIRS SEE SHEET NO. A-18.
 - FOR DETAIL OF DRAINS IN DOG RUNS SEE SHEET NO. A-6.
 - FOR WINDOW & LOUVER DETAILS SEE SHEET NO. A-15.
 - FOR GUARD RAIL & GUARD ANGLE DETAILS SEE SHEET A-19.
 - FOR CONTROL JOINT DETAILS SEE SHEET NO. 20.
 - SEE SHEET A-10 FOR FURTHER SPACES FOR PIPES, ETC. THAT ARE NOT SHOWN ON THIS DRAWING.
 - PROVIDE 7 FIRE EXTINGUISHER HOOKS & INSTALL AT LOCATIONS DESIGNATED BY USING SERVICE.



DETAILS THRU COLUMNS "2-B," "2-C," "3-C" & "2-E" AT FIRST FLOOR ONLY
SCALE 1/2" = 1'-0"

FOR DETAIL THRU COL. "2-D" SEE DETAILS OF TELEPHONE ALCOVE ON SHEET A-4.



REV	DATE	DESCRIPTION	BY
Aug 72	As Constructed		EGH
Aug 72	JUN 06	REVISED PARTITION THICKNESS, TEMPERED GLASS SIDELITES, SHOW-FLOOR PITCH INDICATED IN DOG RUNS.	EGH

DEPARTMENT OF THE ARMY
BALTIMORE DISTRICT, CORPS OF ENGINEERS
BALTIMORE, MARYLAND

WALTER REED A.M.C. WASHINGTON, D.C.

RESEARCH FACILITY (FOREST GLEN ANNEX)

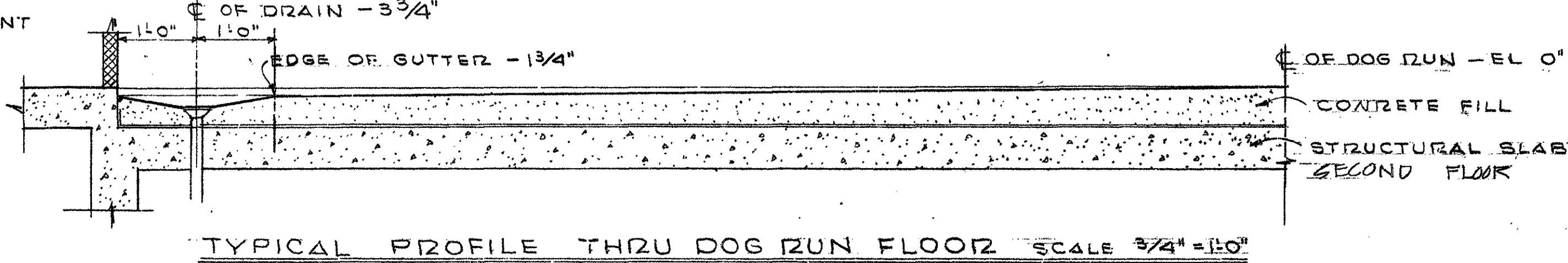
FIRST FLOOR PLAN

DRAWING NUMBER: AS-BLT 32-11-09
PLATE: 13

SCALE: AS SHOWN DATE: 2 MAY 69 SHEET A-1

GENERAL INTERIOR PARTITION NOTE

ALL FIRST & SECOND FLOOR PARTITIONS AT CORRIDORS, ELEVATOR AND STAIRS SHALL BE CARRIED UP TO THE UNDERSIDE OF CONCRETE BEAMS OR CONCRETE SLABS ABOVE. ALL 6" PARTITIONS WILL BE CARRIED UP TO THE UNDERSIDE OF CONCRETE BEAMS OR CONCRETE SLABS ABOVE EXCEPT 4" PARTITIONS HAVING SUSPENDED CEILING ON BOTH SIDES OF PARTITION OR PARTITIONS ABUTTING CHANGES. THESE PARTITIONS WILL BE CARRIED TO NEXT GRID COURSE ABOVE HIGHER FINISHED CEILING.

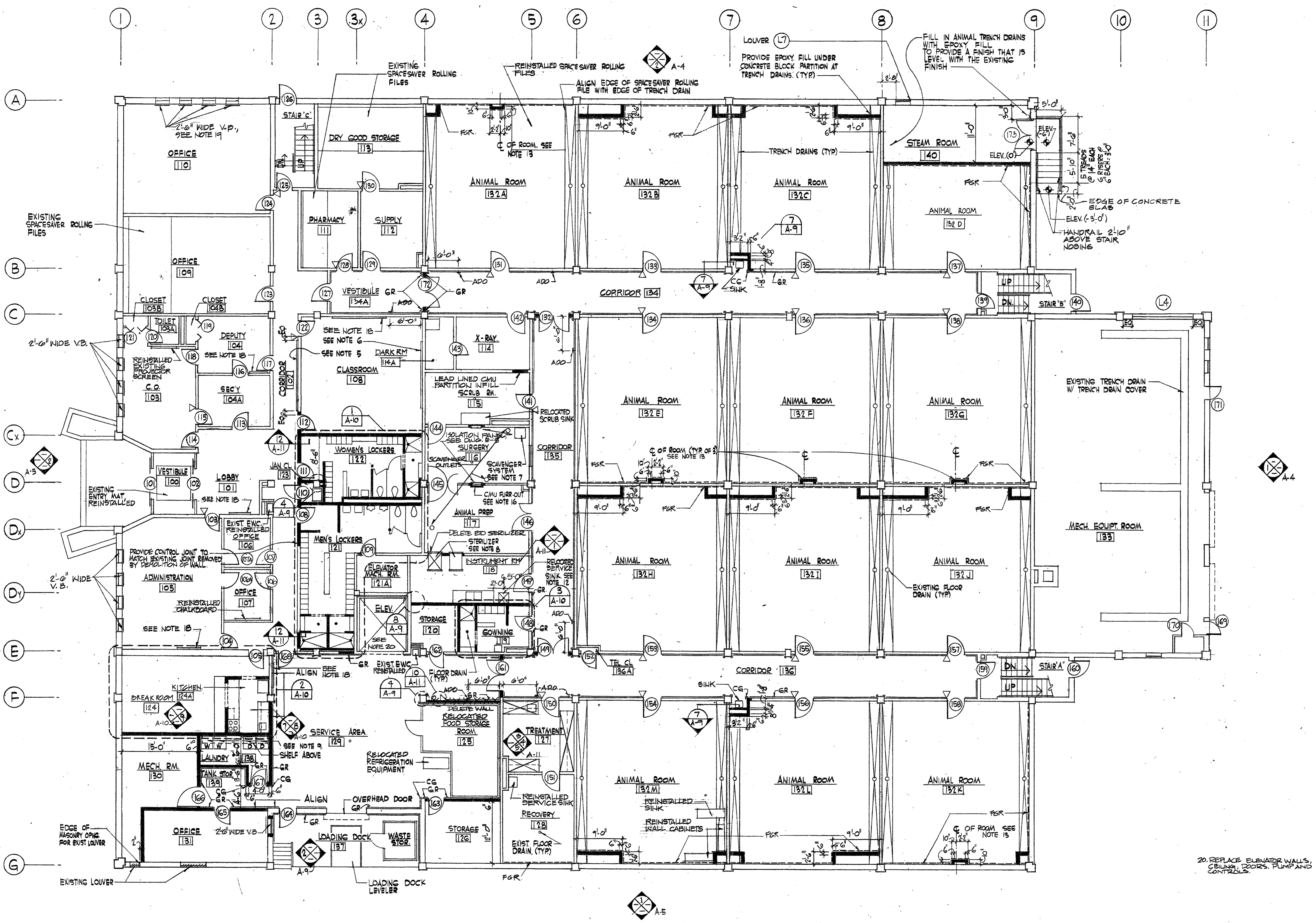


FIRST FLOOR PLAN SCALE 1/8" = 1'-0"

TYPICAL PROFILE THRU DOG RUN FLOOR SCALE 3/4" = 1'-0"

NOTES

- PARTITIONS SHADING THIS INDICATES NEW PARTITIONS. SHADING OF NEW PARTITIONS IS SHOWN FOR CLARITY PURPOSES ONLY AND DOES NOT NECESSARILY INDICATE ALL PARTITION WORK REQUIRED. REFER TO SHEETS A-6 & A-7 FOR FIRE RATING REQUIREMENTS.
- INDICATES EXISTING CORNER GUARDS TO REMAIN.
 INDICATES NEW CORNER GUARD
- INDICATES EXISTING GUARD RAIL TO REMAIN.
 INDICATES NEW GUARD RAIL (SEE SHEET A-11, DETAIL 9)
- ALL PARTITION WORK SHALL BE PARTITION TYPE I AS SHOWN ON 11/11 UNLESS ALL MASONRY INFILL WORK SHALL BE TO MATCH ADJACENT EXISTING WORK.
- RELOCATED CORRIDOR BULLETIN BOARD
- RELOCATED CLASSROOM CHALKBOARD WITH RELOCATED PROJECTOR SCREEN ABOVE.
- SCAVENGER UNIT SHALL BE GOVERNMENT FURNISHED AND CONTRACTOR INSTALLED. SEE OTHER DRAWINGS FOR ADDITIONAL UTILITY REQUIREMENTS.
- STERILIZER UNITS SHALL BE GOVERNMENT FURNISHED AND CONTRACTOR INSTALLED. SEE OTHER DRAWINGS FOR ADDITIONAL UTILITY REQUIREMENTS.
- ONE WASHER AND ONE DRYER ARE EXISTING AND SHALL BE RELOCATED AS SHOWN. ONE WASHER AND ONE DRYER SHALL BE GOVERNMENT FURNISHED AND CONTRACTOR INSTALLED. SEE OTHER DRAWINGS FOR ADDITIONAL UTILITY REQUIREMENTS.
- REMOVE MASONRY BACK TO FIRST BED JOINT WHERE EXISTING FILTER GRILLES, TRANSFER GRILLES, TRANSFER DUCTS, RETURN AIR GRILLES AND SIMILAR ITEMS HAVE BEEN REMOVED. PROVIDE MASONRY TO MATCH ADJACENT TO CLOSE OPENING. SEE SHEETS M-1 & M-2 FOR LOCATIONS.
- WALK IN ACCESS DOOR SPECIFICATION
FLANGE FRAME: .060 EXTRUDED ALUMINUM WITH GASKET SLOT AND MITERED CORNERS.
PANEL FRAME: .060 EXTRUDED ALUMINUM WITH GASKET SLOT AND MITERED CORNERS.
DOOR PANEL: PRIMED GALVANIZED INSERTS WITH FIBERGLASS INSULATION
GASKET: EXTRUDED RUBBER FOR DOOR TO FRAME AND FRAME TO OPENING
HINGE: ZINC PLATED CONTINUOUS - HEIGHT DIMENSION
DOOR THICKNESS: 2" CAST ALLOY DUAL ACTING HANDLES WITH EXTRUDED HANDLE SUPPORTS.
LATCHES: REFER TO PLAN SHEET A-3
SWING: REFER TO PLAN SHEET A-3
- DECONTAMINATION (SERVICE SINK) RELOCATED FROM EXIST. RECOVERY ROOM. SEE NOTE 75, SHEET, D-5.
- COORDINATE LOCATION OF MASONRY CHASE WITH C OF EXISTING DUPLEX RECEPTACLE. SEE DETAIL 1 SHEET A-2
- INDICATES AUTOMATIC DOOR OPERATOR LOCATED @ 4'-0" AFF.
PROVIDE 2 OPERATORS FOR DR# 132, 149, 161, 172, 211, 220, 240, 246.
- INDICATES FIBERGLASS REINFORCEMENT ON BOTTOM OF WALL. STRIKE FIRST MORTAR JOINT ABOVE FLOOR SLAB FLUSH. SEE DETAIL 1/A-9.
- FURR-OUT WALL WITH CMU, AS NECESSARY TO ALLOW FLUSH MOUNTING OF ISOLATION PANEL IN SURGERY ROOM 116. FINISH WALL TO MATCH ADJACENT WALL
- SEAL PERIMETER JOINT BETWEEN CAGE WASHER PAN AND FLOOR IN ACCORDANCE WITH RECOMMENDATIONS OF RESINOUS FLOORING MANUFACTURER.
- EXISTING BULLETIN BOARD REINSTALLED AT SAME LOCATION AS BEFORE DEMOLITION OCCURRED.
- INDICATES VENETIAN BLIND (WIDTHS SHOWN ARE APPROXIMATE, FIELD VERIFY)



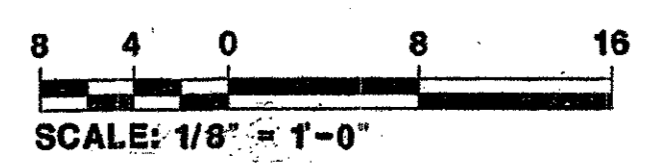
FIRST FLOOR PLAN

SCALE: 1/8" = 1'-0"

GENERAL NOTE:

- ALL HOLES, PENETRATIONS, OR OTHER OPENINGS IN FULL HEIGHT, OR SOUND INSULATED WALLS SHALL BE FILLED WITH MATERIAL EQUIVALENT TO THE WALL CONSTRUCTION. THIS INCLUDES PENETRATIONS ABOVE THE FINISHED CEILING OR IN OTHER CONCEALED LOCATIONS. ALL HOLES, SLEEVES, OR PENETRATIONS IN THE FLOOR SLAB (EITHER FLOOR SLAB OR SLAB ABOVE), SHALL BE SEALED AND FILLED WITH U.L. LISTED FIRESTOPPING MATERIAL. CORRIDOR WALL AND FIRE RATED WALL PENETRATIONS SHALL BE COMPLETELY FILLED AND SEALED TO THE FULL THICKNESS WITH AN APPROVED U.L. LISTED FIRESTOPPING MATERIAL.
- IN ALL ROOMS WHERE INDUSTRIAL RESINOUS FLOORING IS SPECIFIED THE JUNCTION BETWEEN WALLS/FLOORS AND ALL ESCUTCHEONS, PLATES, GRILLES, DIFFUSERS AND OTHER APPLIED ITEMS AND PENETRATIONS SHALL BE FILLED WITH SEALANT TYPE 3
- ALL HOLES, PENETRATIONS AND OTHER OPENINGS RESULTING FROM DEMOLITION OF MECHANICAL, PLUMBING, AND ELECTRICAL ITEMS SHALL BE FILLED WITH MATERIAL EQUAL TO EXISTING WALL CONSTRUCTION AND FINISHED IN ACCORDANCE WITH THE FINISH SCHEDULE.
- INDICATES EXISTING MASONRY CONTROL JOINT. REFER TO DETAIL 10 SHEET A-12

NOTE: IF THIS DRAWING IS A REDUCTION, GRAPHIC SCALE MUST BE USED.



REV	DATE	DESCRIPTION	BY

U.S. ARMY ENGINEER DISTRICT, BALTIMORE
CORPS OF ENGINEERS
BALTIMORE, MARYLAND

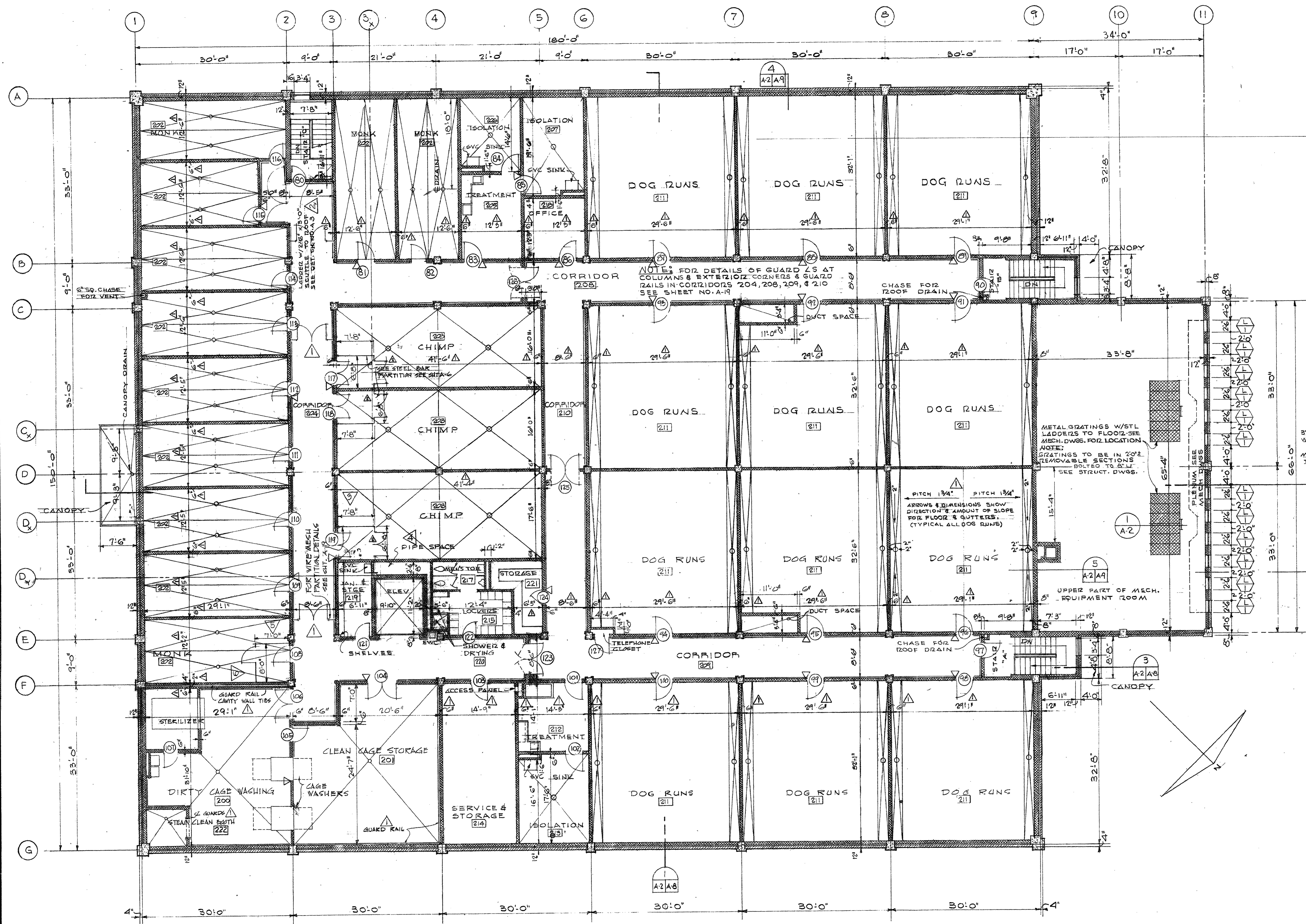
WALTER REED A.M.G. WASHINGTON, D.C.

RENOVATE BUILDING 511
FIRST FLOOR PLAN

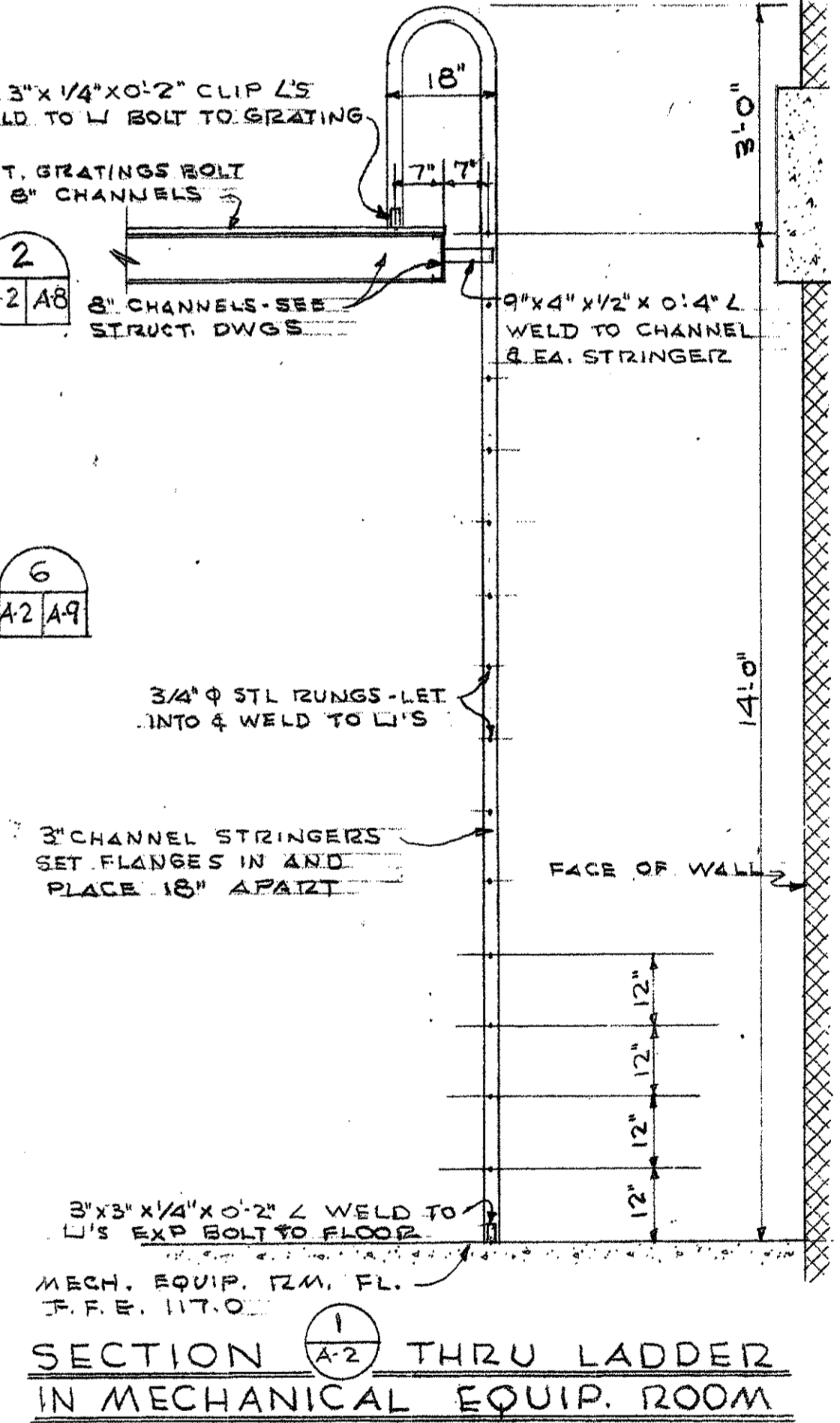
AEPA Architects Engineers
A Professional Corporation
2421 Pennsylvania Avenue N.W.
WASHINGTON, DC 20037-1710
2022 623-0200

DRAWING NUMBER
530-40-02

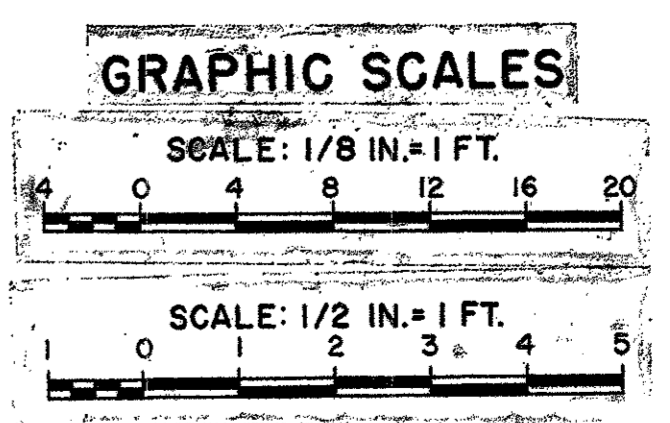
SCALE: AS SHOWN DATE: 28 JUNE 1992 SHEET: 1



- NOTES:**
1. FOR WIRE MESH PARTITIONS & DOORS IN PRIMATE AREAS & CORRIDORS SEE SHEET NO. A-19.
 2. FOR ELEVATOR PLAN & DETAILS SEE SHEET NO. A-16.
 3. FOR ELEVATIONS & DETAILS OF MEN'S LOCKERS NO. 215, MEN'S TOILET NO. 217, & MEN'S SHOWER & DRYING NO. 220 SEE SHEET NO. A-13.
 4. FOR ELEVATION OF DIRTY CAGE WASHING NO. 200 SEE SHEET NO. A-12.
 5. FOR ENLARGED FLOOR PLANS OF DIRTY CAGE WASHING NO. 200, CLEAN CAGE STORAGE NO. 201, TREATMENT NO. 205, ISOLATION NO. 206 & 207, OFFICE NO. 218, JANITOR & STORAGE NO. 219, ELEVATOR, LOCKERS NO. 215, MEN'S TOILET NO. 217, SHOWER & DRYING NO. 220, STORAGE NO. 221, TREATMENT NO. 212, & ISOLATION NO. 213 SEE SHEET NO. A-11.
 6. FOR ENLARGED PLANS OF STAIRS & STAIR DETAILS SEE SHEET NO. A-16.
 7. FOR GUARD ANGLE & GUARD RAIL DETAILS SEE SHEET NO. 19.
 8. FOR LOUVER DETAILS SEE SHEET NO. A-15.
 9. FOR DETAIL OF DRAINS IN DOG RUNS SEE SHEET NO. A-6.
 10. FOR CONTROL JOINT DETAILS SEE SHEET NO. A-20.
 11. SEE SHEET A-11 FOR FINISHED SPACES FOR PIPES, ETC. THAT ARE NOT SHOWN ON THIS DRAWING.
 12. PROVIDE 3 FIRE EXTINGUISHER HOOPS & INSTALL AT LOCATIONS DESIGNATED BY USING SERVICE.



SECOND FLOOR PLAN
SCALE 1/8" = 1'-0"



REV	DATE	DESCRIPTION	BY
Aug 72	As Constructed		EGH
		CHANGED STEEL PARTITION WALLS	
Aug 72	Aug 72	REVISED DATE, THICKNESS, FLOOR PITCH INDICATED IN DOG RUNS, GUARD RAILS SHOWN IN DMS 200, 201	

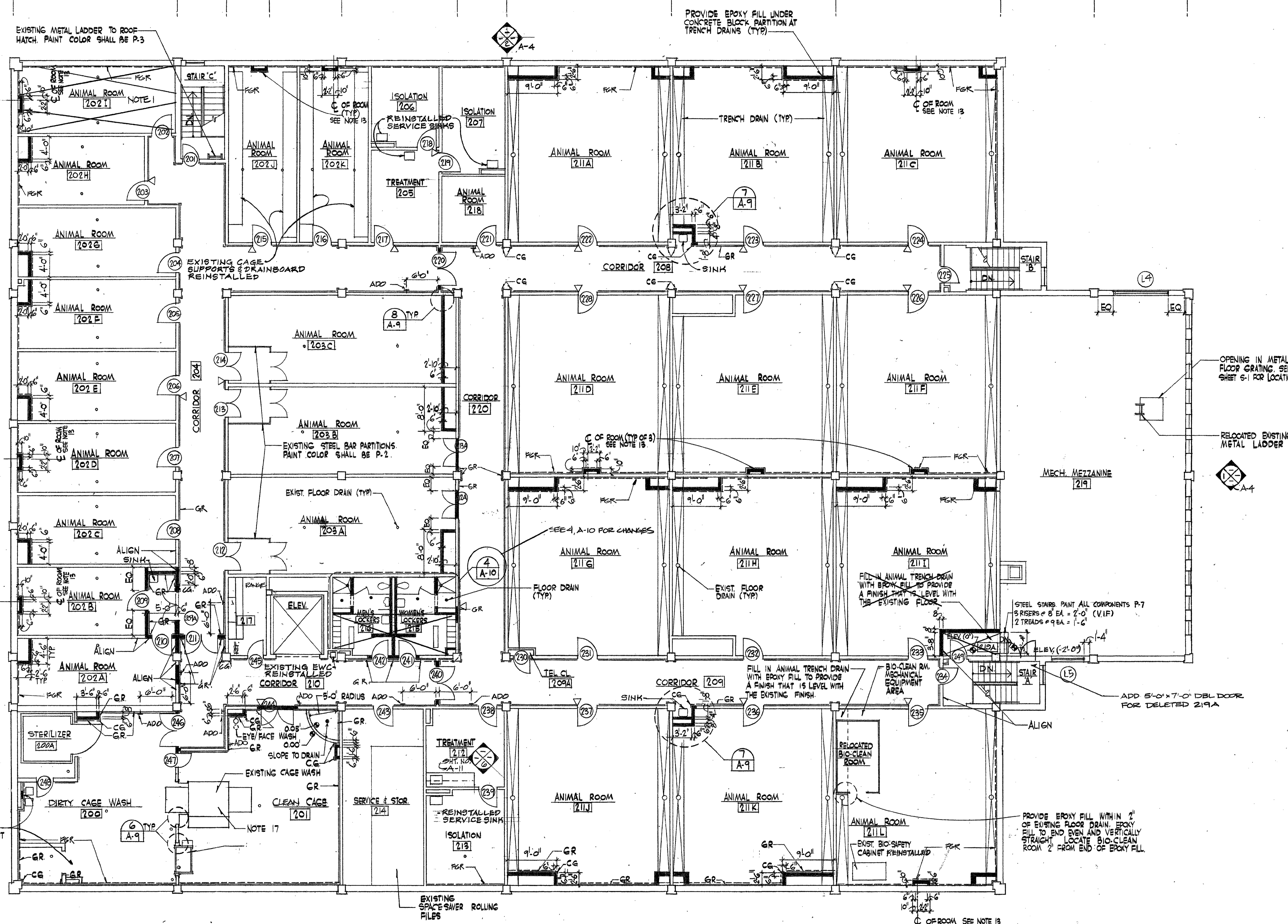
DEPARTMENT OF THE ARMY	
BALTIMORE DISTRICT, CORPS OF ENGINEERS	
BALTIMORE, MARYLAND	
WALTER REED A.M.C.	WASHINGTON, D.C.
RESEARCH FACILITY (FOREST GLEN ANNEX)	
SECOND FLOOR PLAN	
DRAWING NUMBER	PLATE
AS-BLT 32-11-09	14
SCALE: AS SHOWN	DATE: 2 May 69
	SHEET A-2

BLDG 517

▽ = CONTROL JOINT

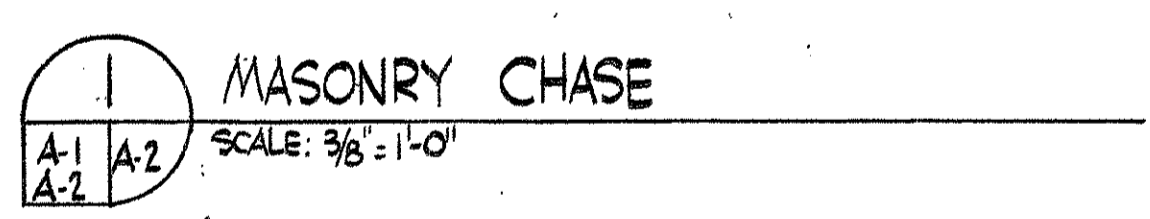
NOTES

REFER TO SHEET A-1 FOR NOTES

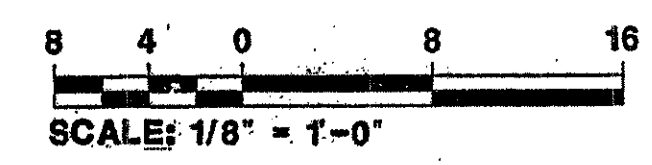


SECOND FLOOR PLAN
SCALE: 1/8" = 1'-0"

1) SLOPE FLOORS TO DRAINS
TYP FOR ROOMS 202A-202I



NOTE: IF THIS DRAWING IS A REDUCTION,
GRAPHIC SCALE MUST BE USED.



REV	DATE	DESCRIPTION	BY

U.S. ARMY ENGINEER DISTRICT, BALTIMORE
CORPS OF ENGINEERS
BALTIMORE, MARYLAND

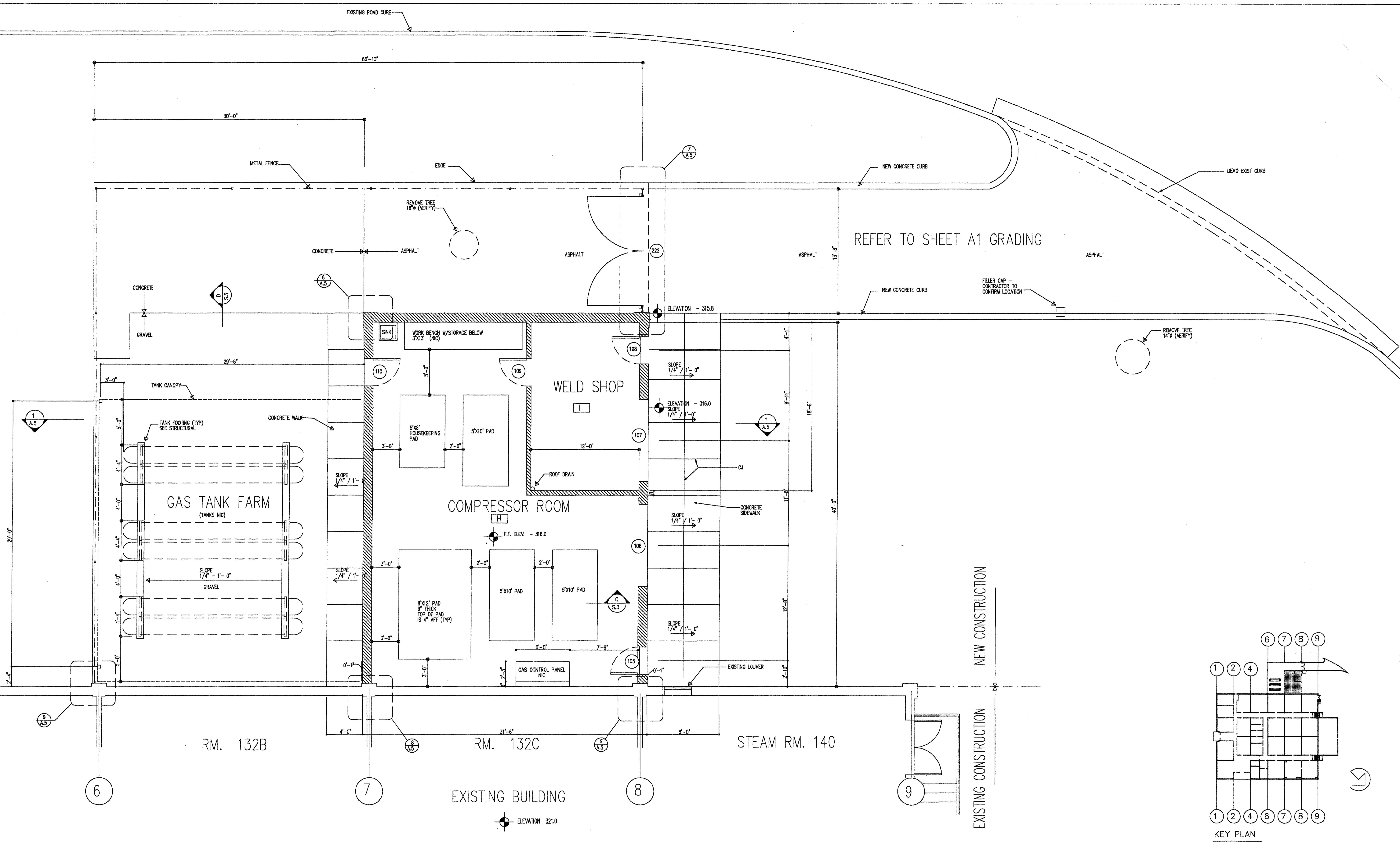
WALTER REED A.M.C. WASHINGTON, D.C.

RENOVATE BUILDING 511
SECOND FLOOR PLAN

AEPA Architects Engineers
A Professional Corporation
2401 Pennsylvania Avenue N.W.
WASHINGTON, DC 20037-1719
(202) 832-8200

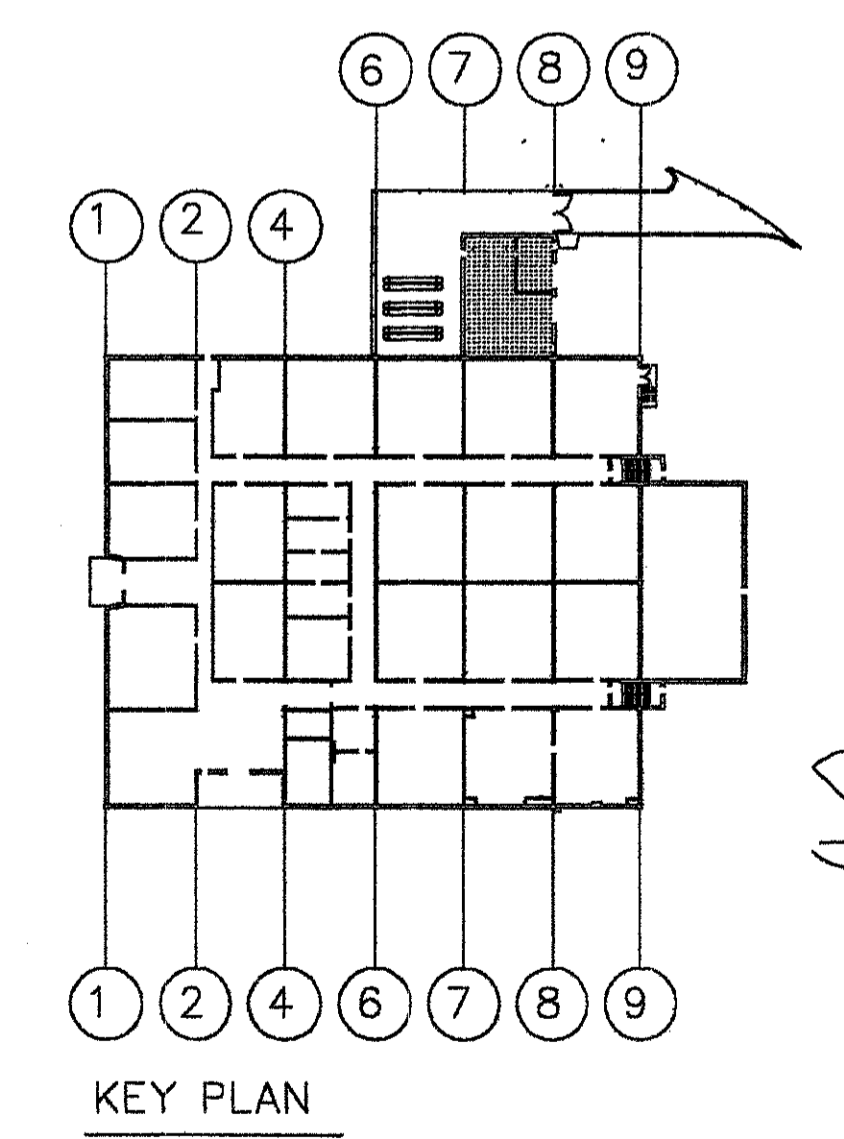
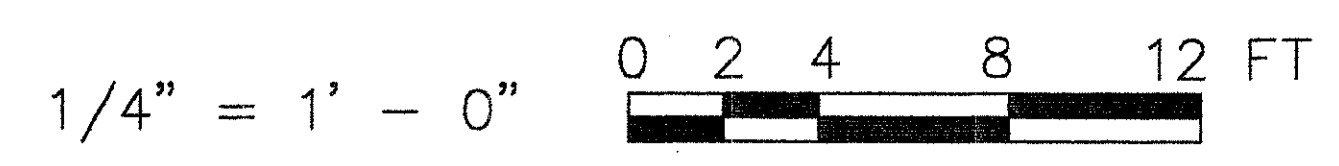
DRAWING NUMBER
530-40-02

SCALE: AS SHOWN DATE: JUNE 1992 SHEET: 1

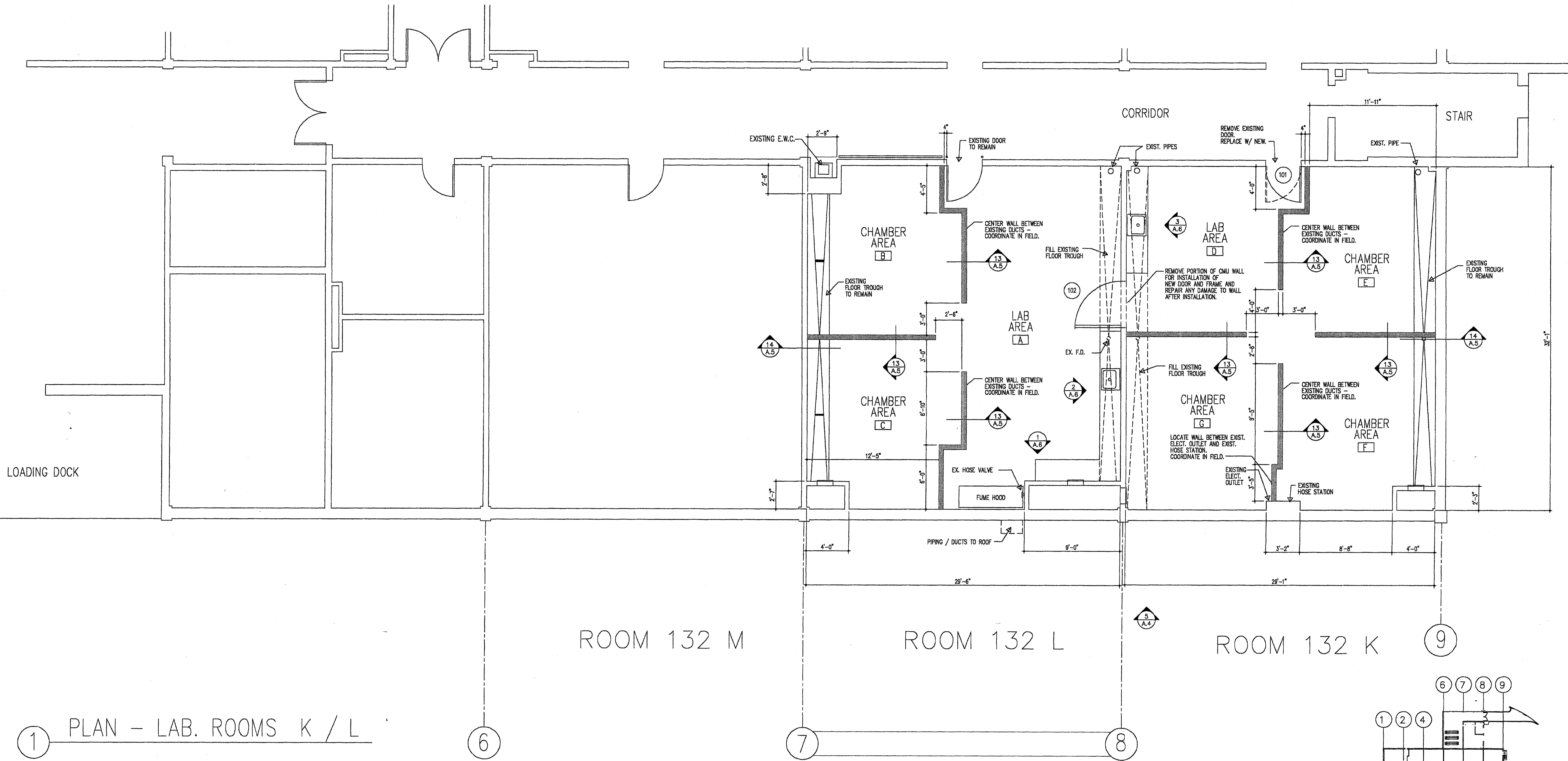


1 PLAN COMPRESSOR / TANK FARM

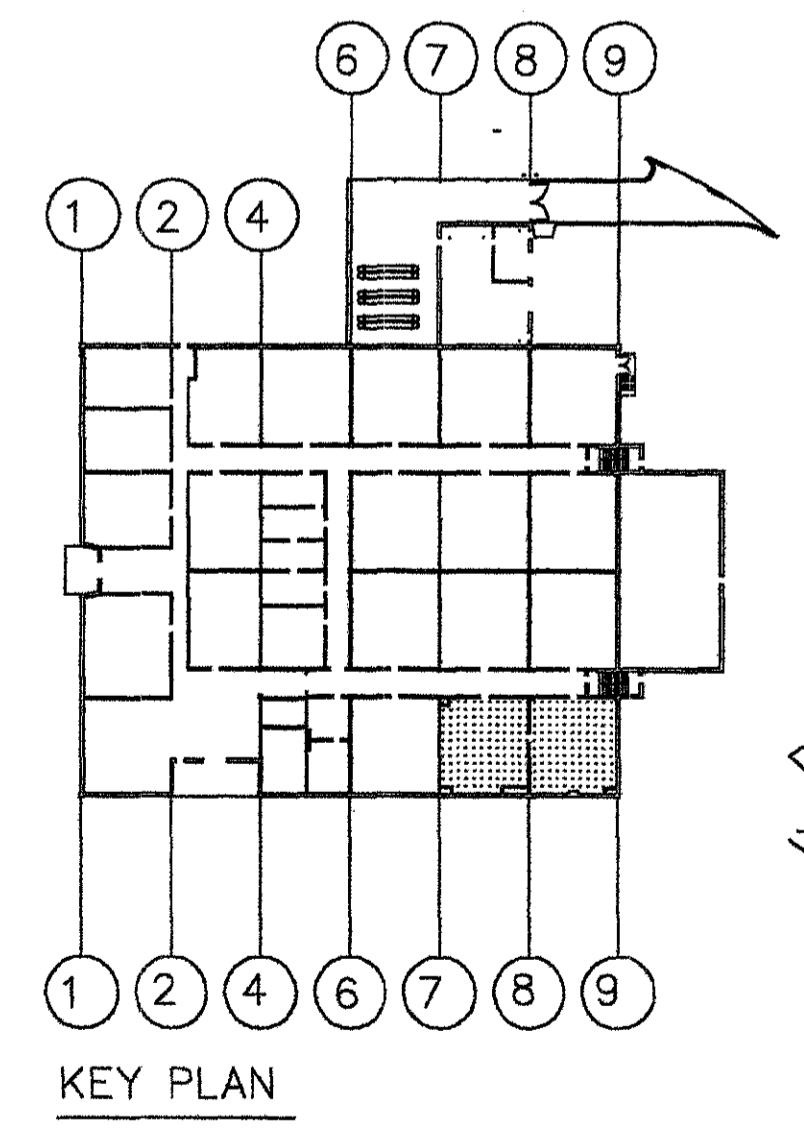
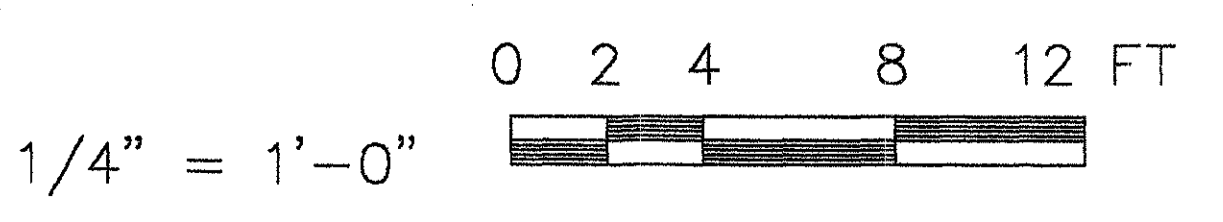
GENERAL NOTE: REMOVE ANY EXISTING OBJECTS BEFORE STARTING WORK.



HAI PROJECT NO. C019700 DATE OF ISSUE: 3 JAN. 2001		Henry Adams, Inc. Consulting Engineers 600 Baltimore Avenue Baltimore, MD 21204-4078 410.377-0548 410.296.8500		ARCHITECT GRIMM AND PARKER ARCHITECTS 8600 YORK ROAD SUITE 200 BALTIMORE, MARYLAND 21212 410.377-0548 410.377-0780 FAX	
REVISION DATE BY	DESCRIPTION WALTER REED ARMY MEDICAL CENTER DIRECTORATE OF ENGINEERING AND HOUSING WASHINGTON, D.C. 20307-5001				DATE BY
REVIEWED BY FIRE CHIEF CH OPERATIONS DIV. CH INSPECTION BR. SAFETY OFFICER PREVENTIVE MEDICINE	DRAWN BY DESIGN BY REVIEWED & COORDINATED PROJECT LEADER ENGRG CHK BY USING AGENCY SUBMITTED BY CHIEF ENGINEERING, PLANS & SERVICES DIV.	BUILDING 511 HYPERBARIC CHAMBER PLAN - COMPRESSOR BUILDING AND TANK FARM	DATE DATE DATE	APPROVED BY FACILITIES ENGINEER	DATE
SCALE AS NOTED		PROJECT NO. NAV000019J	SHEET 4 OF 22	A3	



1 PLAN - LAB. ROOMS K / L



HAI PROJECT NO. C019700 DATE OF ISSUE: 3 JAN. 2001		Henry Adams, Inc. Consulting Engineers 600 Baltimore Avenue Baltimore, MD 21204-4079 410.296.8500		ARCHITECT GRIMM AND PARKER ARCHITECTS 6800 YORK ROAD SUITE 200 BALTIMORE, MARYLAND 21212 410 377-0549 410 377-0790 FAX	
REVISION DATE DESCRIPTION BY	WALTER REED ARMY MEDICAL CENTER DIRECTORATE OF ENGINEERING AND HOUSING WASHINGTON, D.C. 20307-5001				
REVIEWED BY FIRE CHIEF CH OPERATIONS DIV. CH INSPECTION DIV.	DRAWN BY: DESIGN BY: REVIEWED & COORDINATED PROJECT LEADER ENGINEER IN CHARGE	BUILDING 511 HYPERBARIC CHAMBER			
SAFETY OFFICER PREVENTIVE MEDICINE	SUBMITTED BY: DATE APPROVED BY: DATE	PLAN - LAB. ROOMS 132 K/L			
CHIEF ENGINEERING, PLANS & SERVICES DIV.		SCALE AS NOTED	PROJECT NO. NAV000019J	SHEET 3 OF 22	DATE