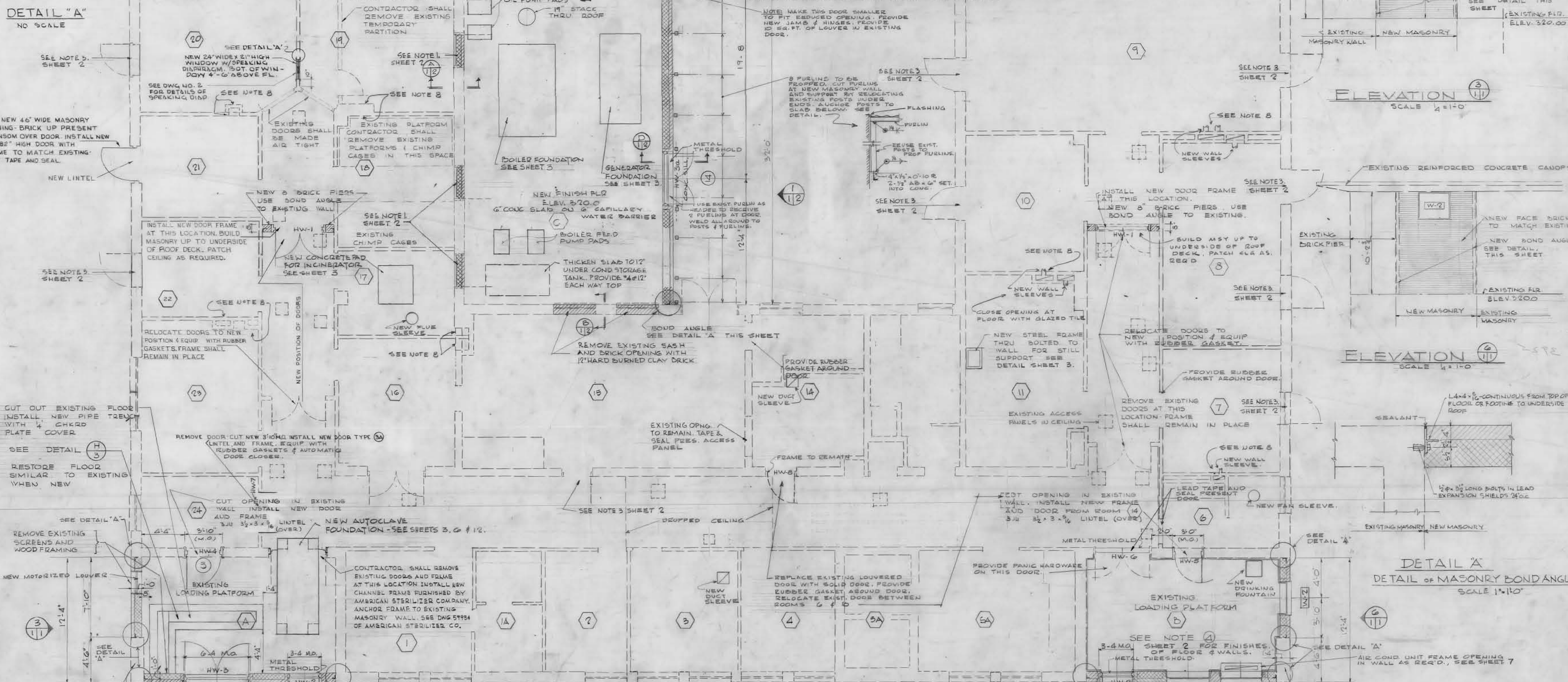


GENERAL NOTES

1. IN ALL AREAS, ALL CRACKS AND APERTURES, ALL PENETRATIONS OF CEILINGS BY FIXTURES, PIPE, CONDUIT, DUCTS, EDGES OF LOUVERS, ETC. SHALL BE CALKED & SEALED BY A SEALANT TO PREVENT LEAKAGE OF AIR INTO AND OUT OF CEILING SPACE.
2. ALL FISSURES, CRACKS, OPENINGS, PIPE & CONDUIT PENETRATIONS OF PARTITIONS BETWEEN ZONES AS DELINEATED ON SHEET 7 SHALL BE CALKED AND SEALED TO PREVENT LEAKAGE OF AIR INTO AND OUT OF ADJACENT ZONE.
3. EXISTING ASBESTOS CEILING TILE IN SPACES 7, 8, 9, 10, 11, 12, 13, 14, 15, 16, 17, 18, 19, 20, 21, 22, 23, 24 SHALL BE SEALED BY A TROWELLED ON SEALANT AND SPRAYED WITH A FINISH TO FACILITATE CLEANING. - SEE SPECIFICATION.
4. ALL EXISTING EXTERIOR WINDOWS SHALL BE TACK WELDED INTO PLACE, TAPED AND SEALED AGAINST AIR LEAKAGE.
5. SEE SHEETS 6, 7, 8, 9 & 10 FOR LOCATION OF PIPE AND CONDUIT SLEEVES, AND DUCT OPENINGS THROUGH WALLS AND ROOFS. THESE OPENINGS SHALL BE SEALED AS PER NOTES 1 & 2. ALSO SEE DETAIL ON SHEET 12.
6. SEE MECHANICAL DRAWINGS INCLUDING SHEET 6 FOR EXTENT OF NEW UNDERFLOOR SEWER LINES, PIPING AND FLOOR DRAINS. CUT EXISTING CONCRETE FLOORS, WALLS, PARTITIONS, AND OTHER BUILDING COMPONENTS TO PERMIT INSTALLATION OF MECHANICAL PIPING AND APPURTENANCES. AFTER BACKFILLING, CONCRETE FLOORS, WALLS, PARTITIONS AND OTHER BUILDING FEATURES SHALL BE PATCHED & RESTORED SIMILAR TO EXISTING WHEN NEW.
7. SEE SHEET 7 FOR NEW DUCT, FLUE & FAN SLEEVES IN WALLS & ROOF.
8. ENLARGE AIR OPENINGS AT FLOOR - SEE SHEET 7.

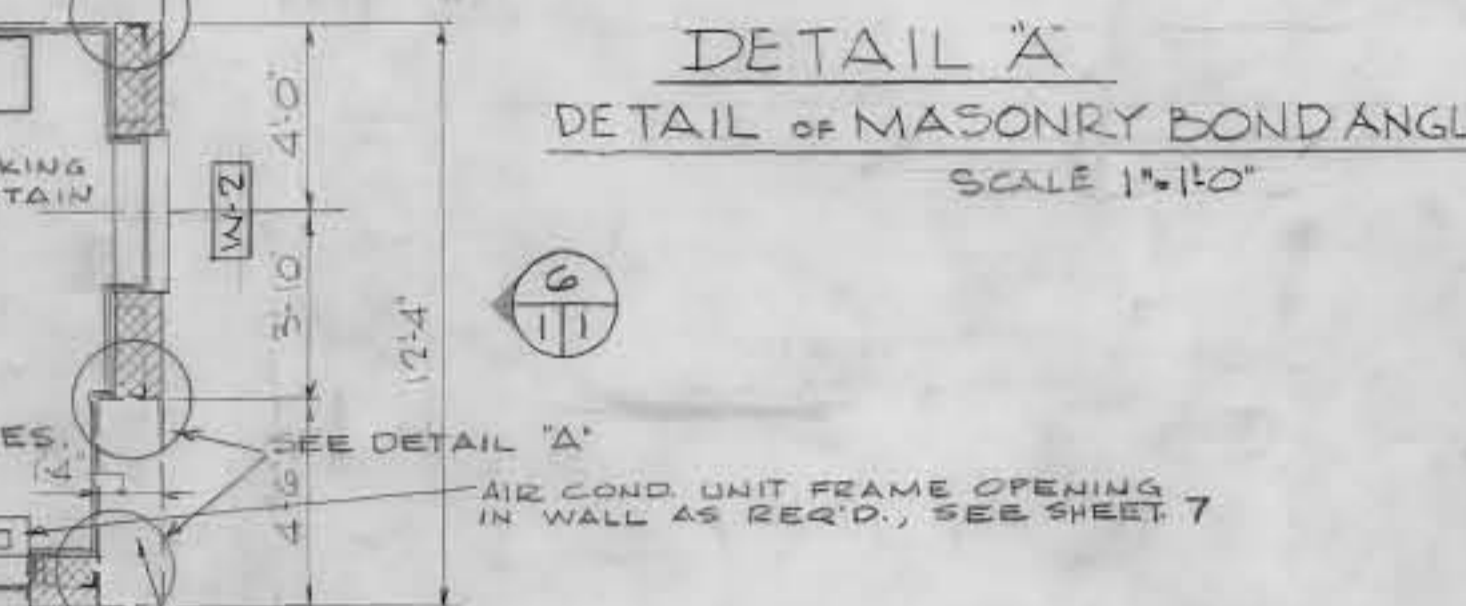
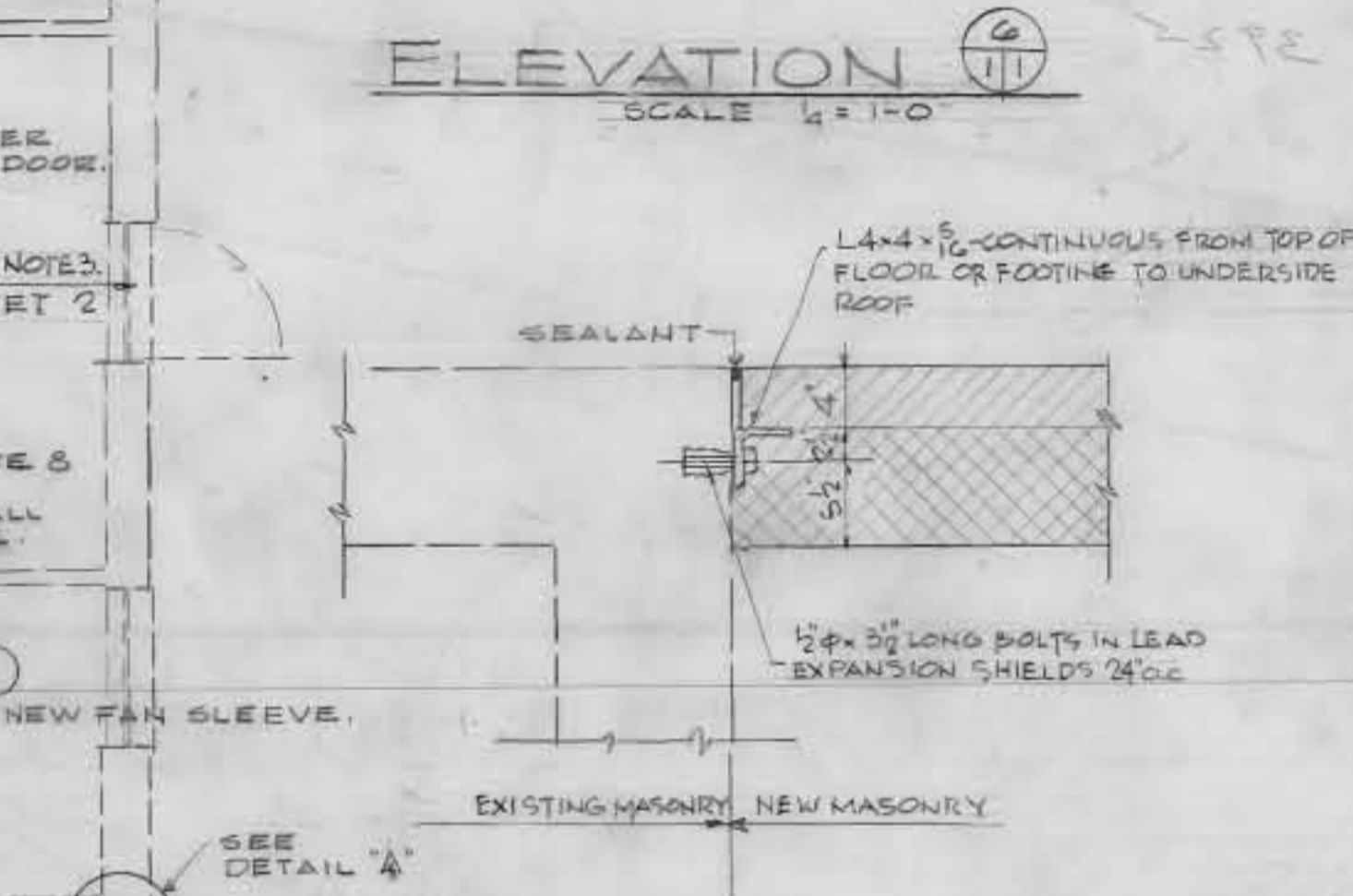
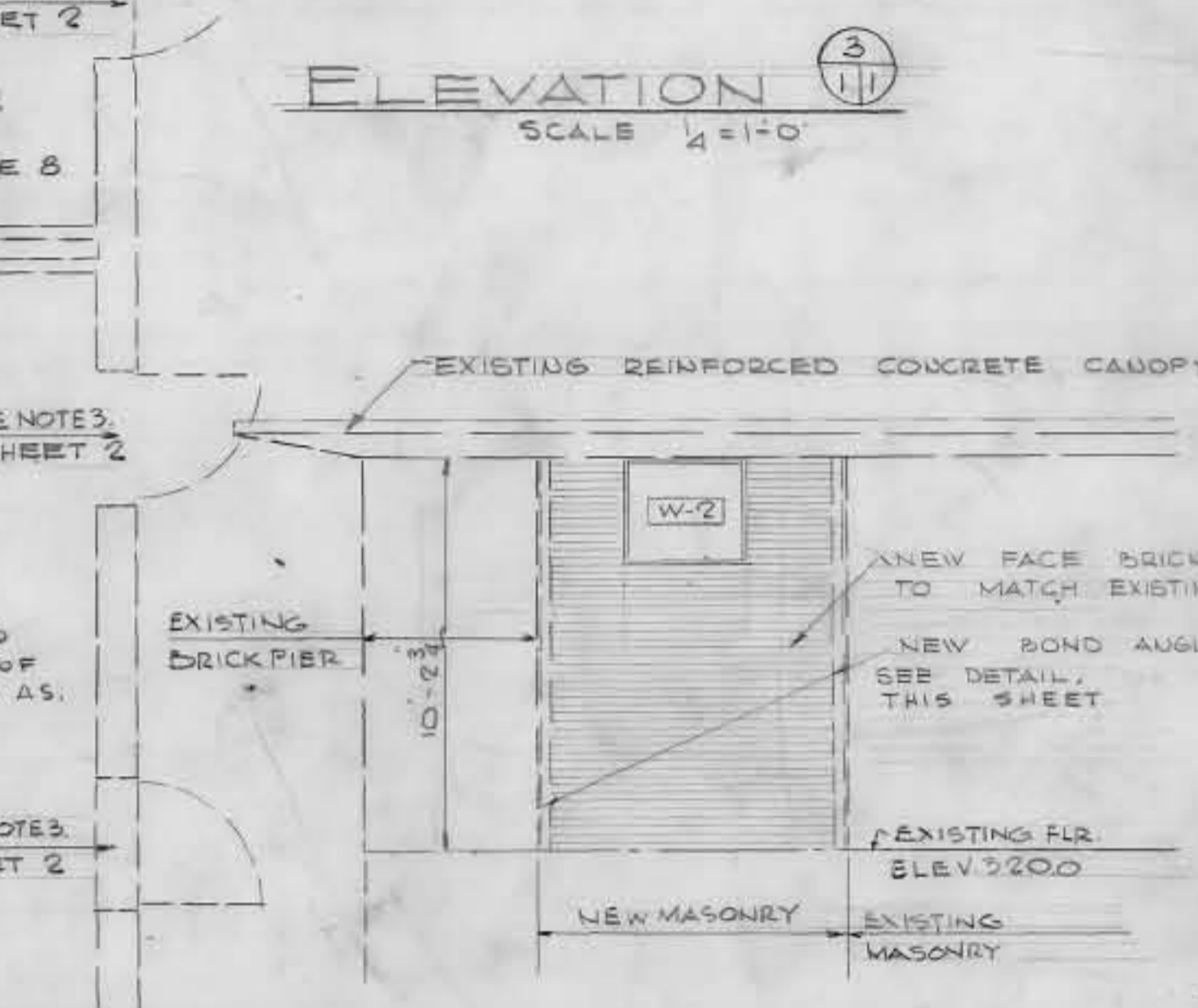
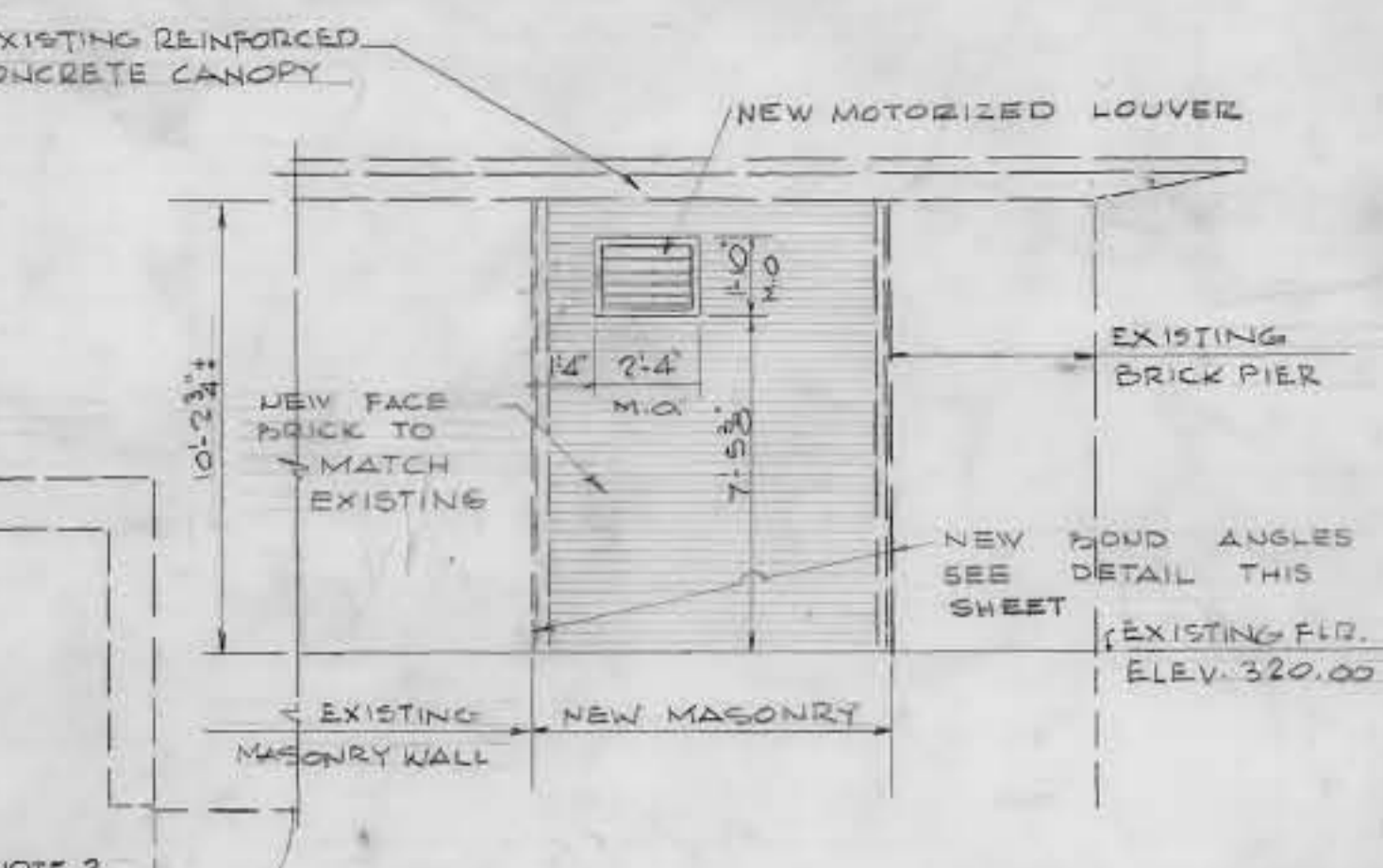
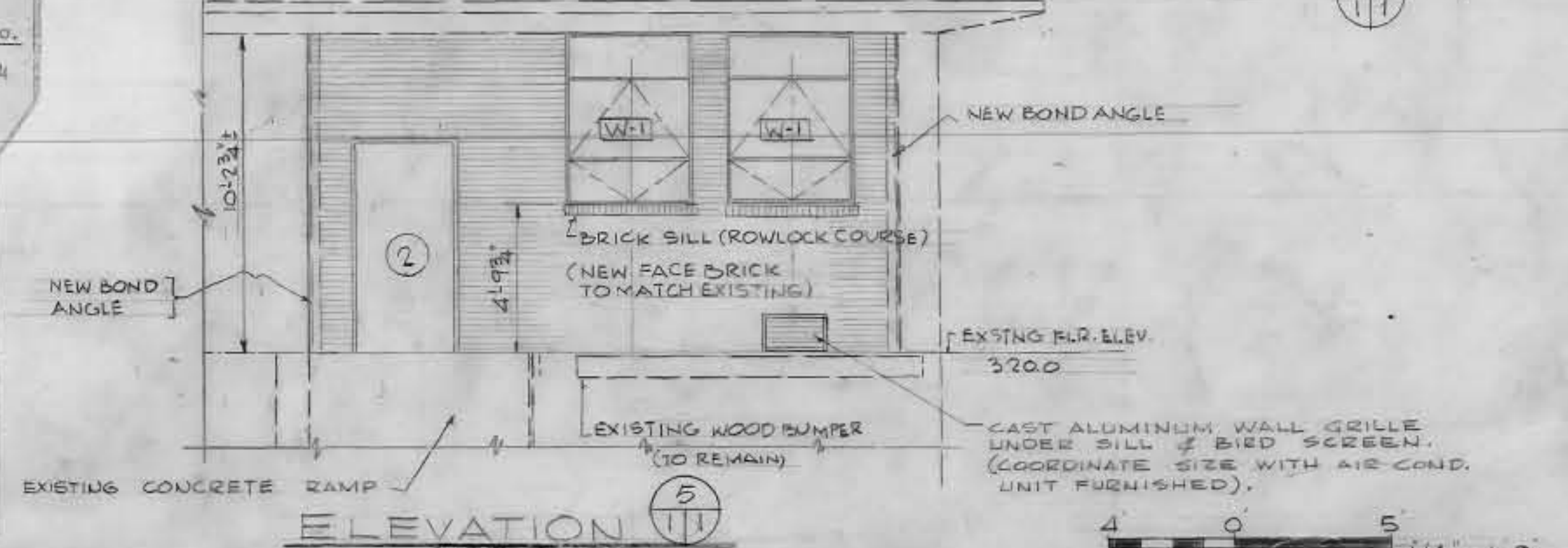
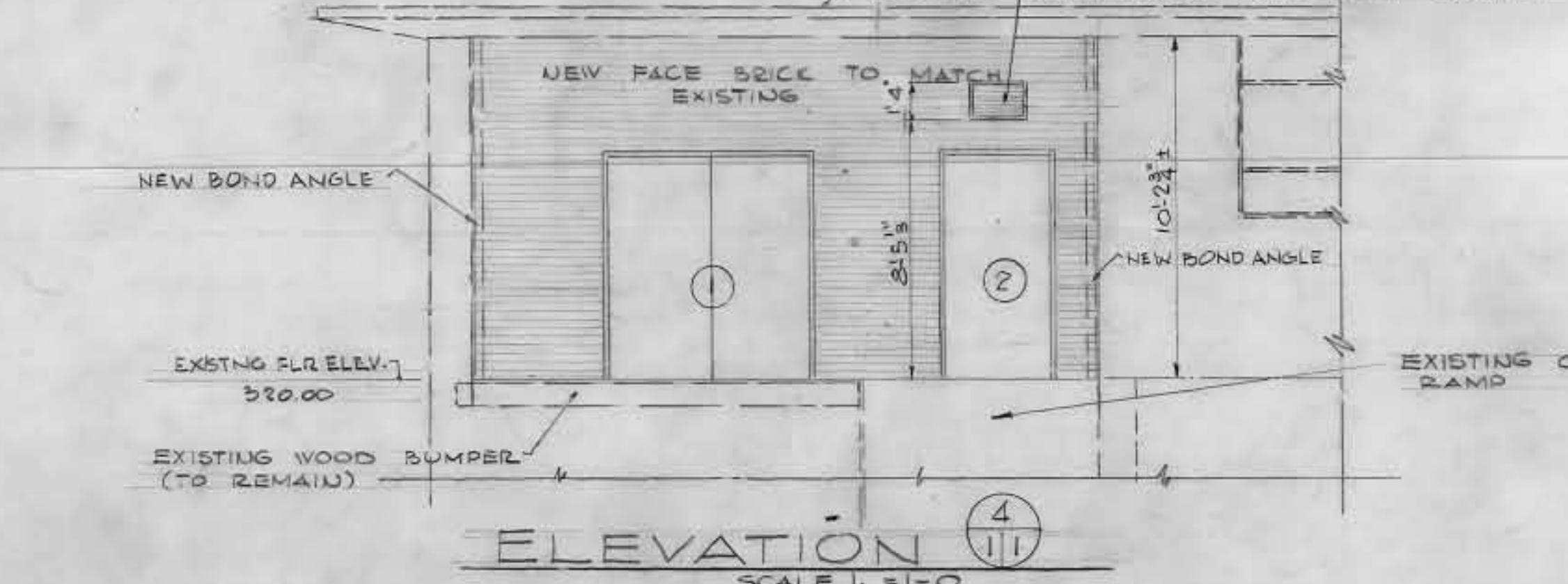


FLOOR PLAN OF EXISTING BUILDING WITH ADDITIONS & MODIFICATIONS SCALE 1/4" = 1'-0"

RECORD DRAWINGS

CONTRACT NO. DA-18-020-ENG-3925
 CONTRACTOR DUNDEE, INC. WILMINGTON, DEL.
 STARTING DATE JULY 1966
 COMPLETION DATE JUNE 1967

Title	Sheet No.	Drawing No.
Plan, Elevations and Details - Arch.	1	40-07-14
Sections, Elevations and Schedules - Arch.	2	"
Plan of Addition and Details - Arch. - Struct.	3	"
Decontamination Plant Plan, Elevations and Details - Arch.	4	"
Decontamination Plant - Structural Plans - Miscellaneous Details	5	"
Floor Plan - Plumbing	6	"
Floor Plan - Mechanical	7	"
Roof Plan - Mechanical	8	"
New Boiler Plant	9	"
Decontamination System	10	"
Present Roof Plan - Mech. Details	11	"
Plot Plan - Mech. Details	12	"
Mechanical Details	13	"
Control Diagrams	14	"
Floor Plan - Electrical	15	"
Riser Diagram - Elec. Details	16	"

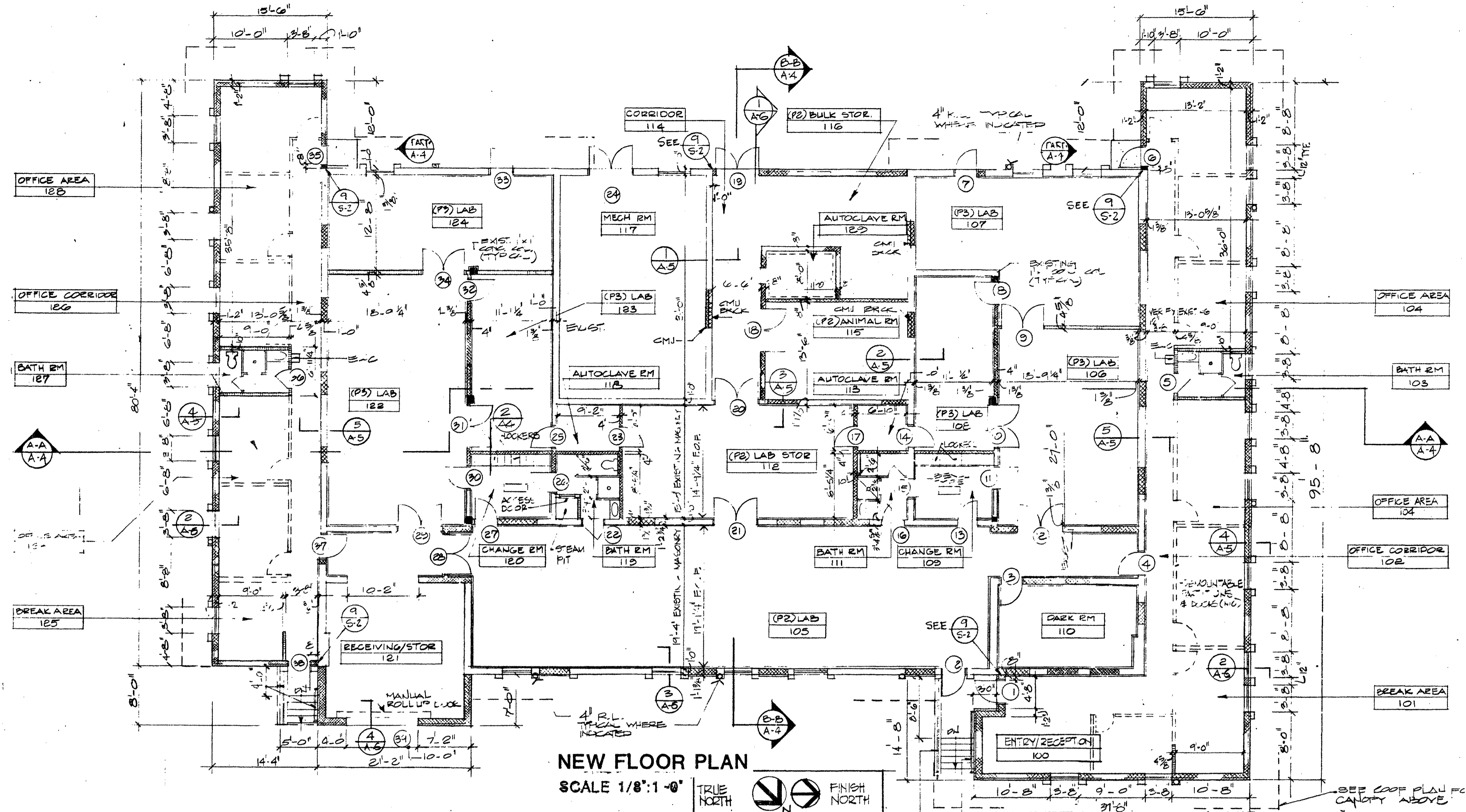


REVISION	DATE	DESCRIPTION	BY
	Aug 68	As Constructed	EGH

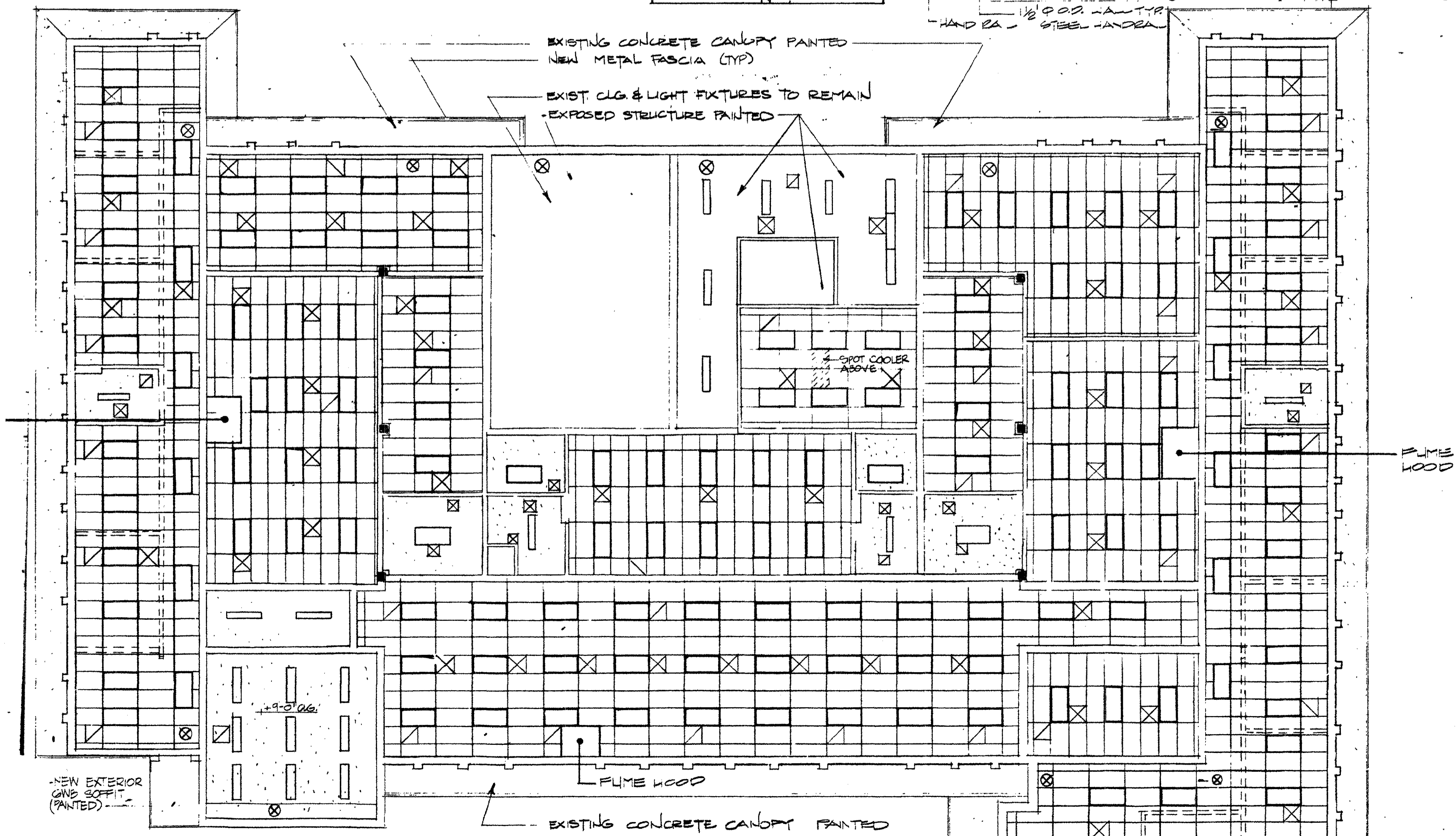
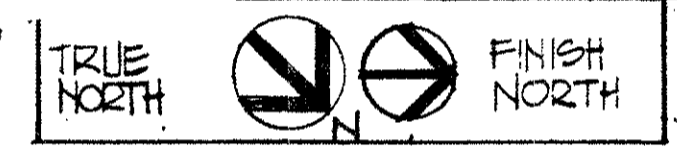
WELLER & SCOTT CONSULTING ENGINEERS WASHINGTON, D.C.
 CORPS OF ENGINEERS U.S. ARMY OFFICE OF THE DISTRICT ENGINEER BALTIMORE DISTRICT BALTIMORE, MARYLAND

WALTER REED MEDICAL CENTER WASHINGTON, D.C. 20012
 MODIFICATION OF BUILDING 508 HAZARDOUS RESEARCH PLAN, ELEVATIONS AND DETAILS ARCHITECTURAL

DATE: 17 MAY 66
 SCALE: SHOWN
 SPEC. NO.
 DRAWING NUMBER AS-BLT 40-07-14
 SHEET 1



NEW FLOOR PLAN
SCALE 1/8":1'-0"



NEW REFLECTING CEILING PLAN
SCALE 1/8":1'-0"

LEGEND

- NEW PAINTED DRYWALL CEILING
- NEW SUSP ACoust TILE CLG.
- 2"x4" LAY IN FLOOR LIGHT FIXTURES
- 1"x4" SURFACE FLOOR LIGHT FIXTURE (SUSPENDED IN AREAS OF EXPOSED STRUCTURE)
- 24"x24" SUPPLY DIFFUSER (SEE MECH)
- 24"x24" RETURN AIR / EXHAUST GRILLE (SEE MECH)
- EXIST LIGHT (SEE ELEC)
- 3/8" STUD PARTITION W/ 1/2" GNB BOTH SIDES & SOUND INSULATION (49% RH)
- CMU & BRICK
- EXISTING 12" x 12" CONCRETE COLUMNS

REVISION		DESCRIPTION	
REVIEWED BY	WALTER REED ARMY MEDICAL CENTER FACILITIES ENGINEERING DIVISION WASHINGTON, D.C. 20012		
DESIGN BY	AA1	RENOVATION & ADDITION TO BLDG 508	
DESIGNED & COORDINATED BY	DIRECTOR OF FACILITIES ENGINEERING WASHINGTON, D.C. 20012		
DR. BLDG & GNB OFF	NEW FLOOR PLANS		
SUBMITTED BY	DATE	APPROVED BY	DATE
SUPV WORK COORDINATING OFFICE	DATE	FACILITIES ENGINEER	DATE
SCALE	PROJECT NO. FW001965J FE001436J	SHEET	2 OF 5