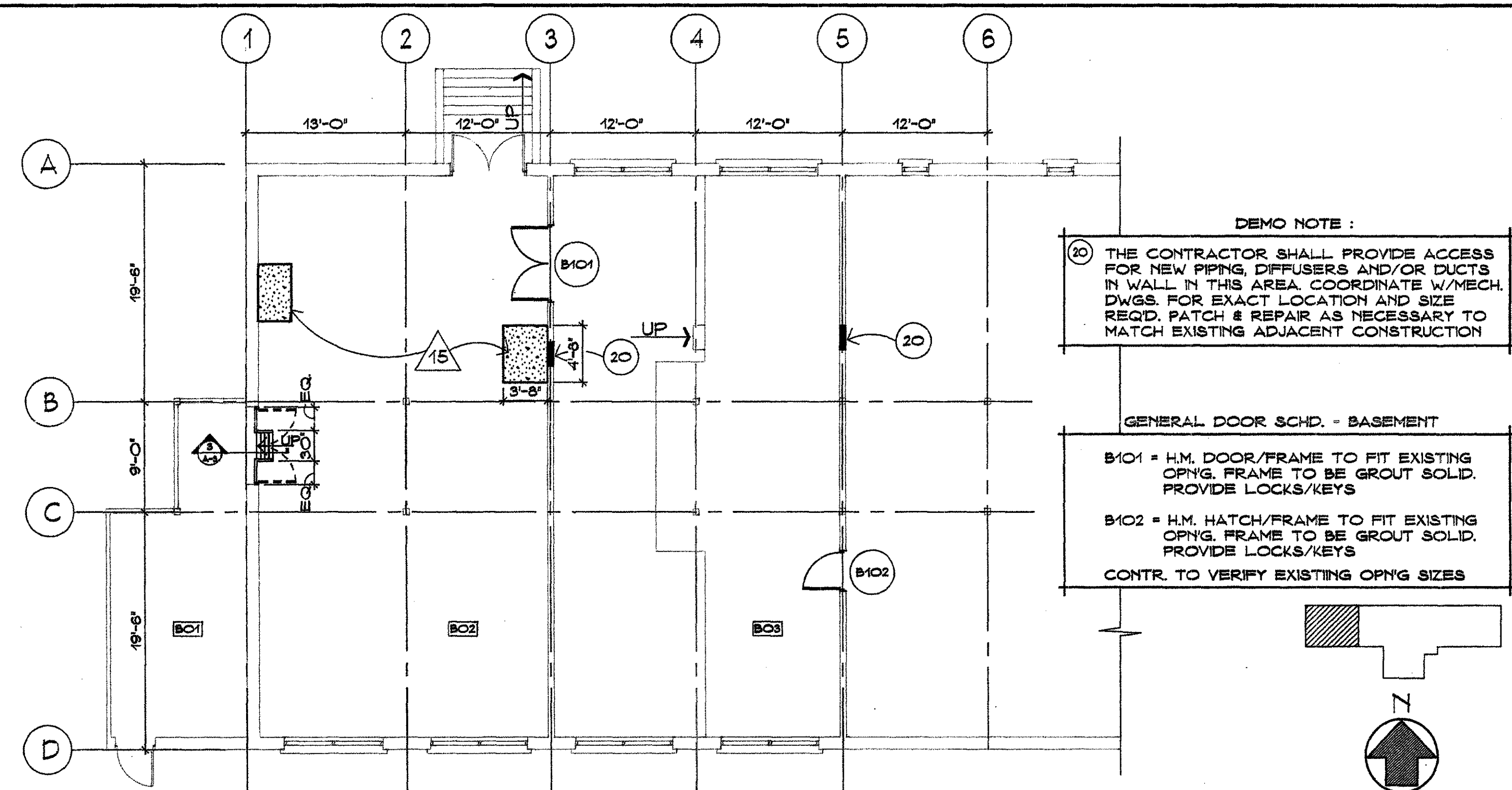


1 FLOOR PLAN - BUILDING 501

1/8"=1'-0"



DEMO NOTE :
 (20) THE CONTRACTOR SHALL PROVIDE ACCESS FOR NEW PIPING, DIFFUSERS AND/OR DUCTS IN WALL IN THIS AREA. COORDINATE W/MECH. DWGS. FOR EXACT LOCATION AND SIZE REQ'D. PATCH & REPAIR AS NECESSARY TO MATCH EXISTING ADJACENT CONSTRUCTION

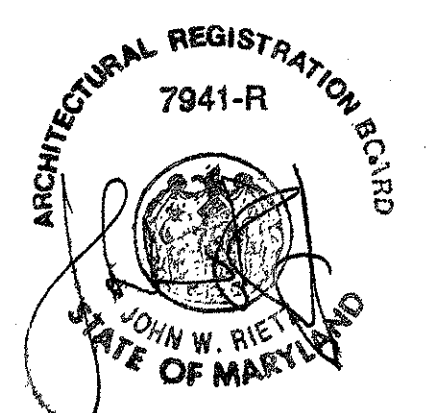
GENERAL DOOR SCHED. - BASEMENT
 B101 = H.M. DOOR/FRAME TO FIT EXISTING OPNG. FRAME TO BE GROUT SOLID. PROVIDE LOCKS/KEYS
 B102 = H.M. HATCH/FRAME TO FIT EXISTING OPNG. FRAME TO BE GROUT SOLID. PROVIDE LOCKS/KEYS
 CONTR. TO VERIFY EXISTING OPNG SIZES

- 1 TYPICAL FOR ALL INTERIOR WALLS WITHIN THE CONTRACT LIMITS (EXCLUDING ROOMS 25,29,30,31, AND 32) ALL WALLS SHALL EXTEND TO STRUCTURE & ANY OPNGS, PIPE/DUCT PENETRATIONS SHALL BE FILLED AND OR SEALED COMPLETELY W/GYPSUM WALL BOARD OR CMU AS REQ'D
- 2 * PROVIDE & INSTALL TRACK FOR PLASTIC AIR CURTAIN
- 3 * FILL MASONRY OPNG W/CMU/GLAZED BLOCK UNIT. TOOTH-IN, ALIGN WITH & MATCH EXIST. ADJACENT WALL SURFACES
- 4 * PATCH AND REPAIR TO MATCH EXISTING TILE FLOOR, IN THIS AREA
- 5 * PATCH AND REPAIR TO MATCH EXISTING TILE WALL, IN THIS AREA
- 6 FILL OPNGS FLUSH W/ADJACENT SURFACE W/CMU TO MATCH
- 7 REMOVE EXISTING LOUVER AND PREPARE OPNG FOR INSTALLATION OF MOTORIZED DAMPER - SEE MECH. DWGS. FOR SPECIFICS
- 8 APPLY EXTERIOR INSULATED FINISH SYSTEM TO MATCH MAIN BUILDING
- 9 CLEAN AND PAINT ALL INTERIOR SURFACES
- 12 * REINSTALL RELOCATED TOWEL DISPENSER IN WALL
- 13 * REINSTALL RELOCATED BENCH FROM ROOM 29 IN THIS LOCATION
- 14 * CAULK AROUND DUCT PENETRATIONS
- 15 PROVIDE NEW 4" THICK CONCRETE HOUSE-KEEPING PAD W/#3 DOWELL @ 24" OC INTO EXISTING SLAB - COORDINATE LOCATION W/ELECTRICAL DWGS.
- 16 PROVIDE NEW 6" CONCRETE PAD W/ 6 X 6 - W2.9 X W2.9 - COORDINATE LOCATION W/ELECTRICAL DWGS.
- 17 PROVIDE NEW 6" CONCRETE PAD W/ 6 X 6 - W2.9 X W2.9 W/W.M. COORDINATE LOCATION W/ELECTRICAL DWGS. VERIFY CONDUIT OPNGS, REQUIRED SIZES & LOCATION W/LOCAL POWER UTILITY CO. & TRANSFORMER MANUFACTURER.

GENERAL NOTES :
 ALL LINTELS IN MASONRY WALL OPNGS ARE TO BE STEEL OR PRE-CAST CONCRETE
 * REFER TO SHEET A-5

LEGEND :

- = INDICATES APPROXIMATE AREA OF WORK - SEE SPECIFIC NOTES FOR DETAILED INFORMATION
- = NOTE NO. 1
- = NEW WALL CONSTRUCTION SEE WALL TYPES FOR SPECIFICS



100% SUBMISSION

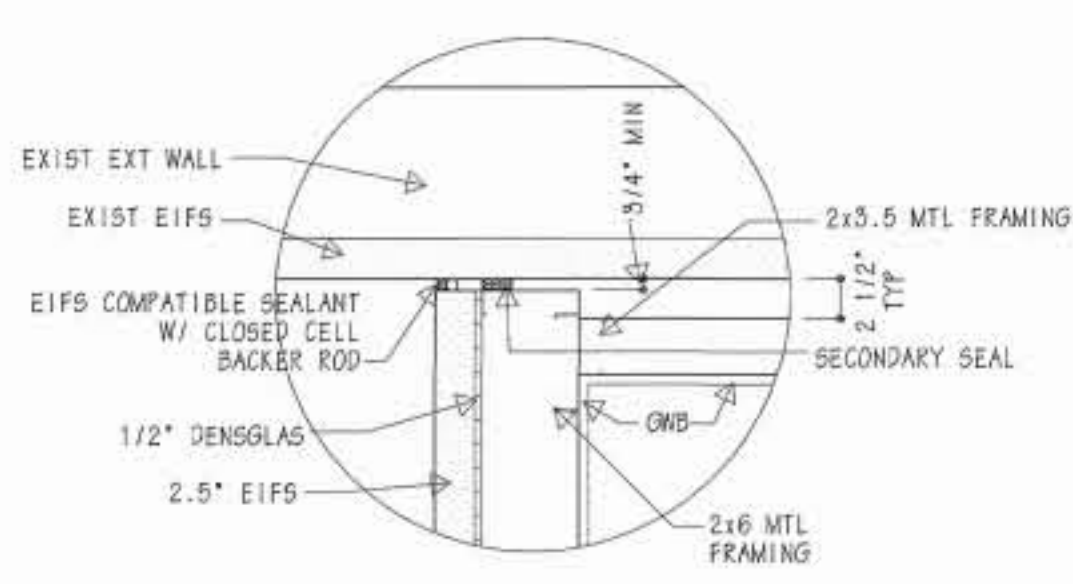
REVISION	DATE	DESCRIPTION

WALTER REED ARMY MEDICAL CENTER DIRECTORATE OF ENGINEERING AND HOUSING WASHINGTON, D.C. 20307-5001		
REVIEWED BY	DRAWN BY: C.E.B./D.K.B.	PROJECT: HARVESTING/FERMENTATION LABORATORY RENOVATION - BLDG. 501
PREPARED BY	DESIGN BY: J.W.R.	SHEET TITLE: FLOOR PLAN PARTIAL BASEMENT PLAN
CH OPERATIONS DIV.	REVIEWED & COORDINATED	PROJECT LEADER
CH INSPECTION BR.	ENGINEER CHECK BY:	ARCHITECT: BECK POWELL & PARSONS
SAFETY OFFICER	USNG AGENCY	2204 Maryland Avenue Baltimore, Maryland 21218 (410) 235-9500
	DATE: 2-12-93	DATE:
	SCALE: NOTED	PROJECT NO: 92051
		SHEET 3 OF 30

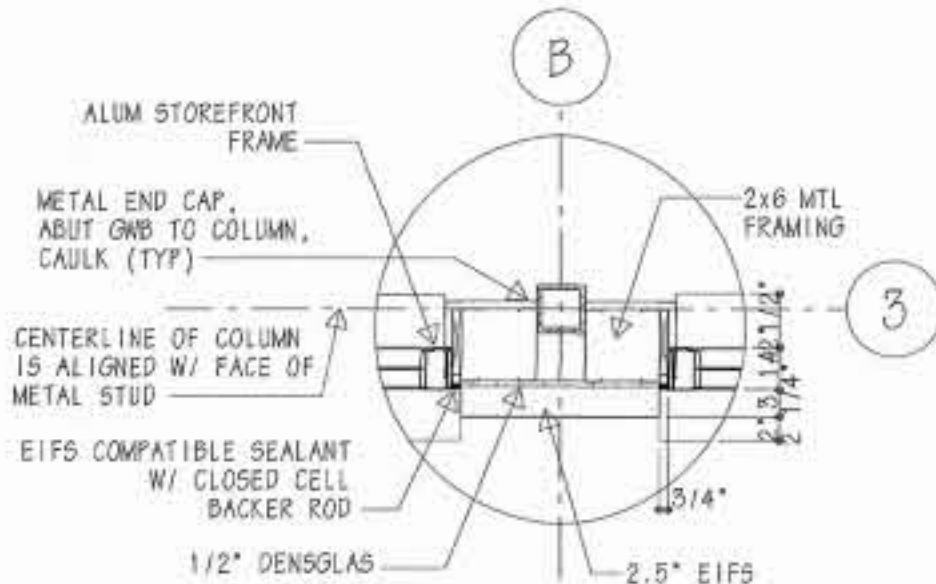
2 PARTIAL BASEMENT FLOOR/DEMO. PLAN - BLDG. 501

1/8"=1'-0" 3 FINISH NOTES

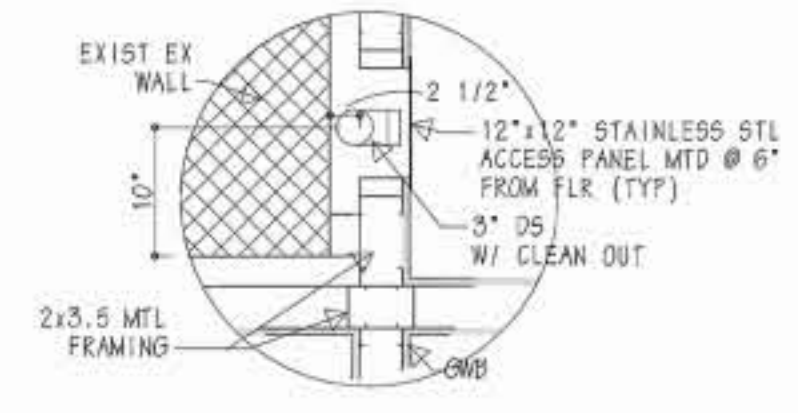
A2



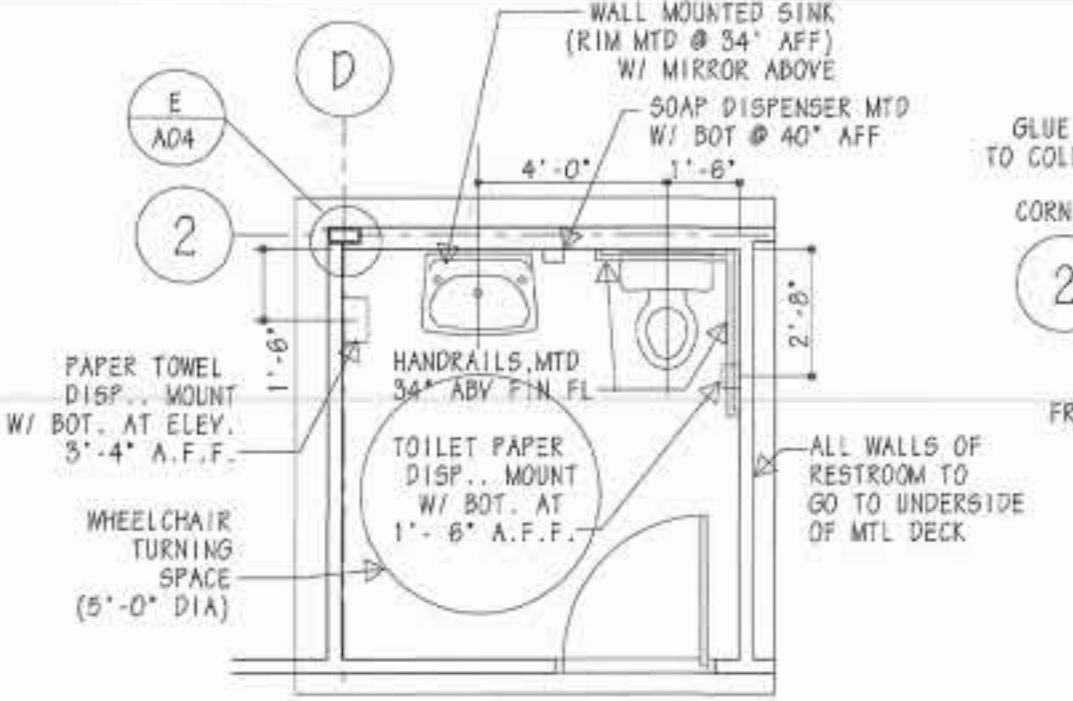
A DETAIL
1"=1'-0"



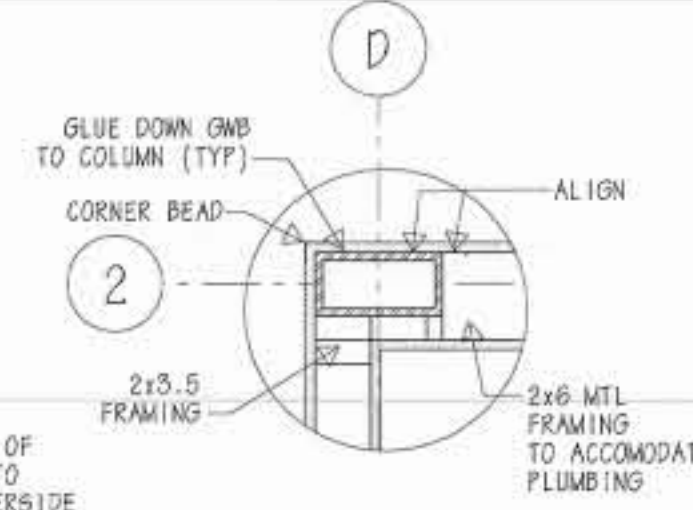
B DETAIL
3/4"=1'-0"



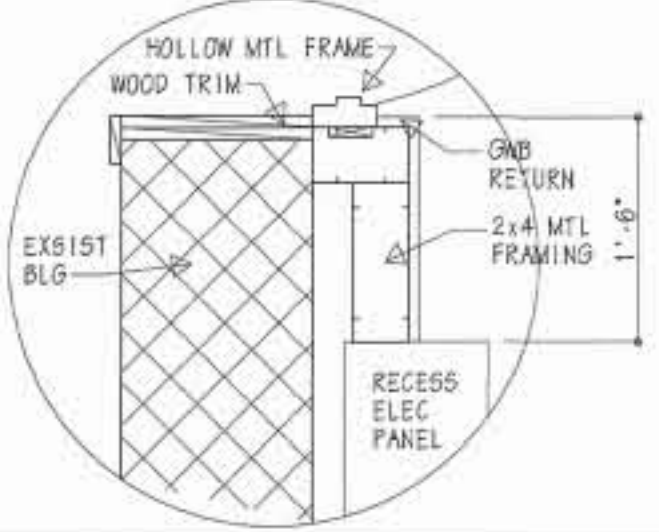
C DETAIL
3/4"=1'-0"



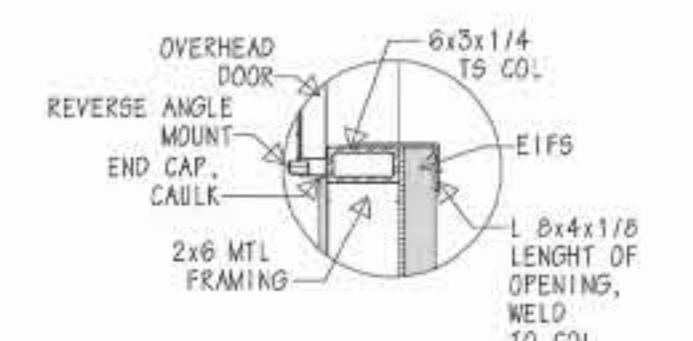
D RESTROOM, RM 102
1/4"=1'-0"



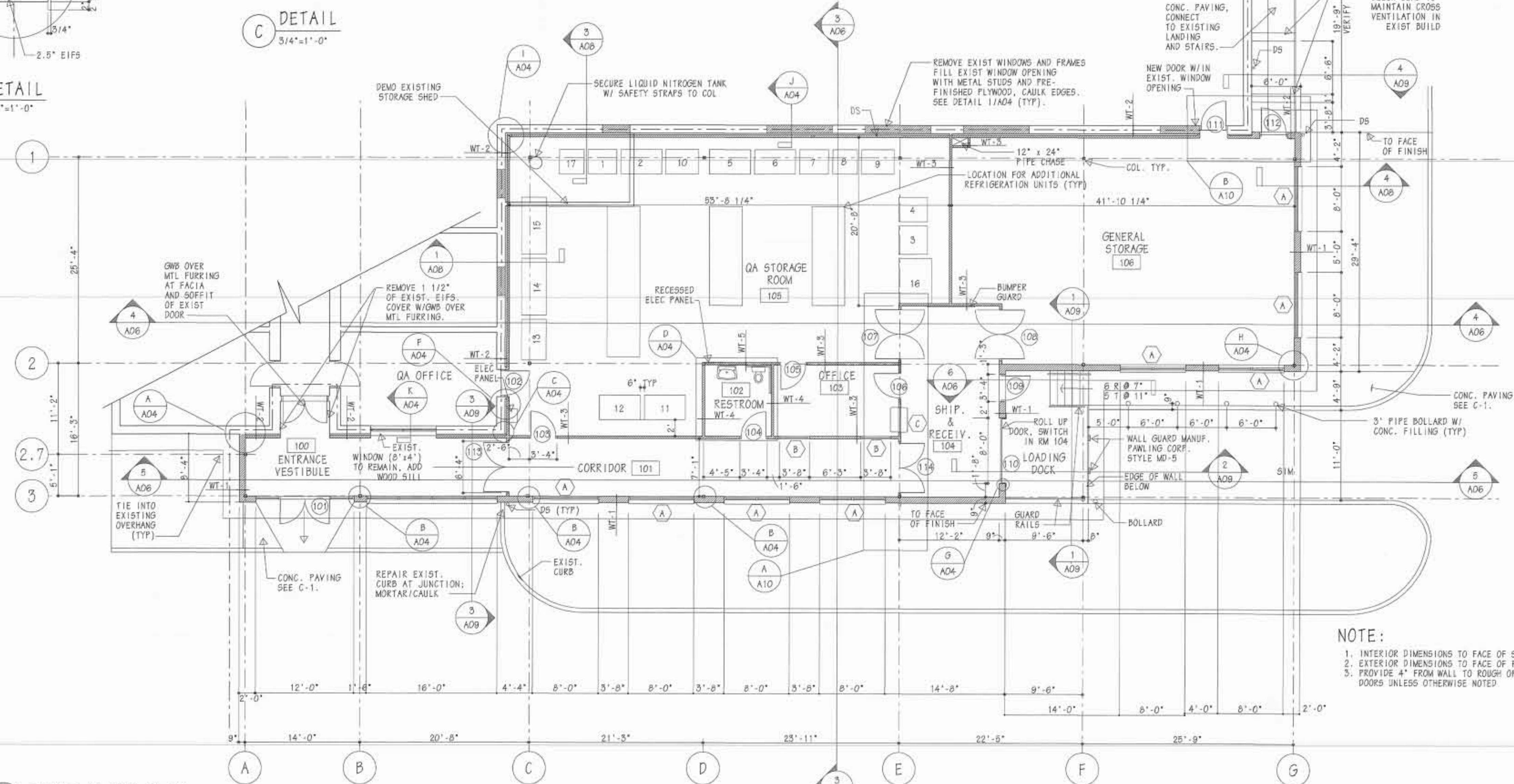
E DETAIL
1"=1'-0"



F DETAIL
3/4"=1'-0"

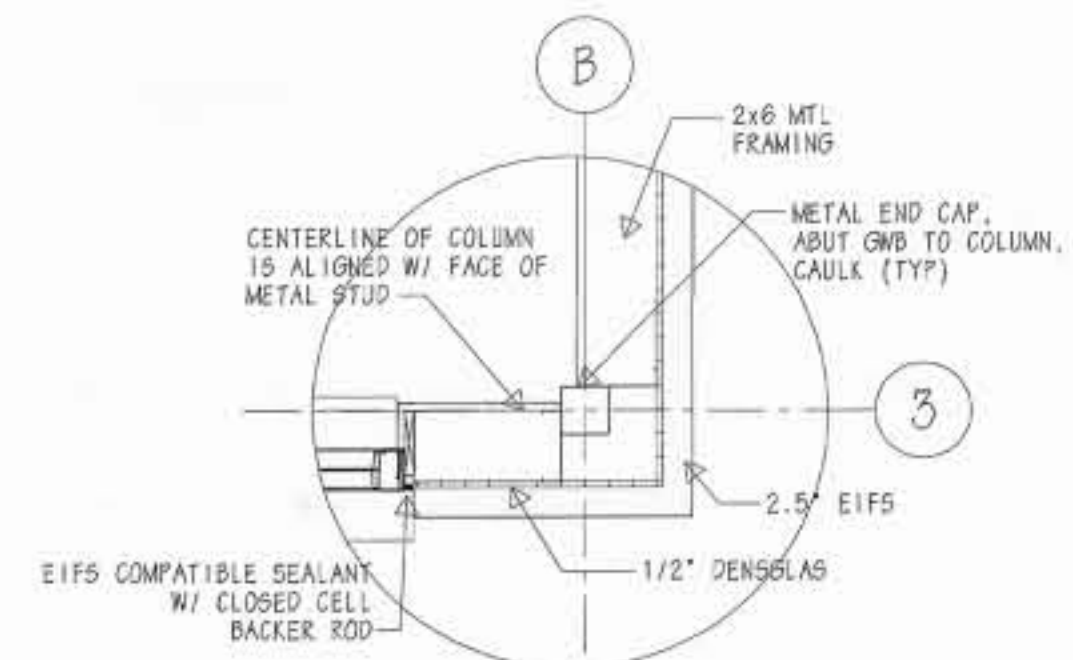


G DETAIL
3/4"=1'-0"

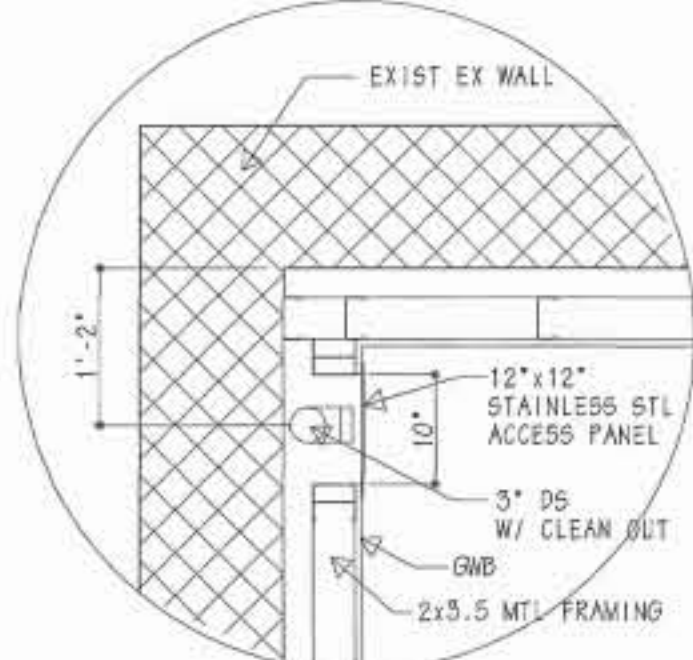


FIRST FLOOR PLAN
1/8"=1'-0"

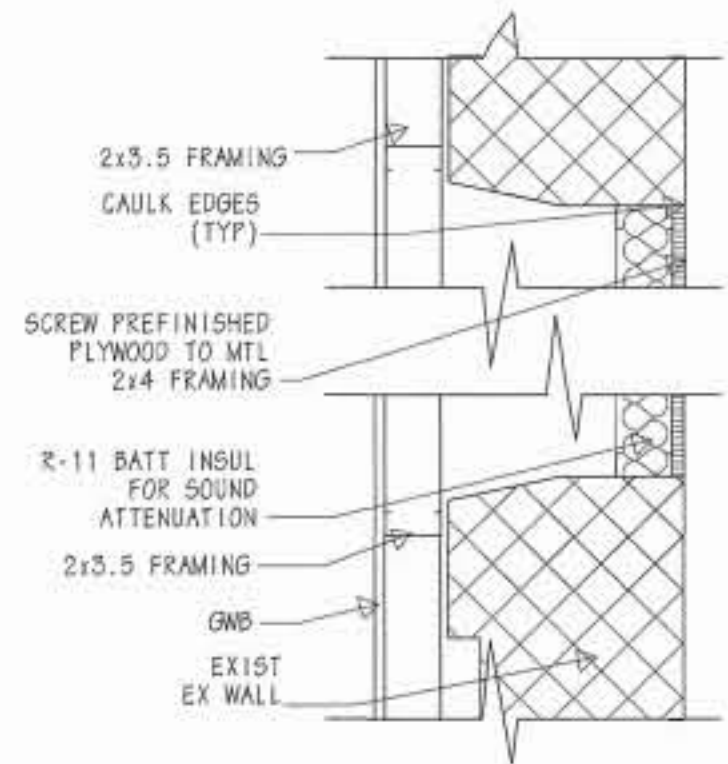
NOTE:
1. INTERIOR DIMENSIONS TO FACE OF STRUCTURE
2. EXTERIOR DIMENSIONS TO FACE OF FINISH
3. PROVIDE 4" FROM WALL TO ROUGH OPENING OF DOORS UNLESS OTHERWISE NOTED.



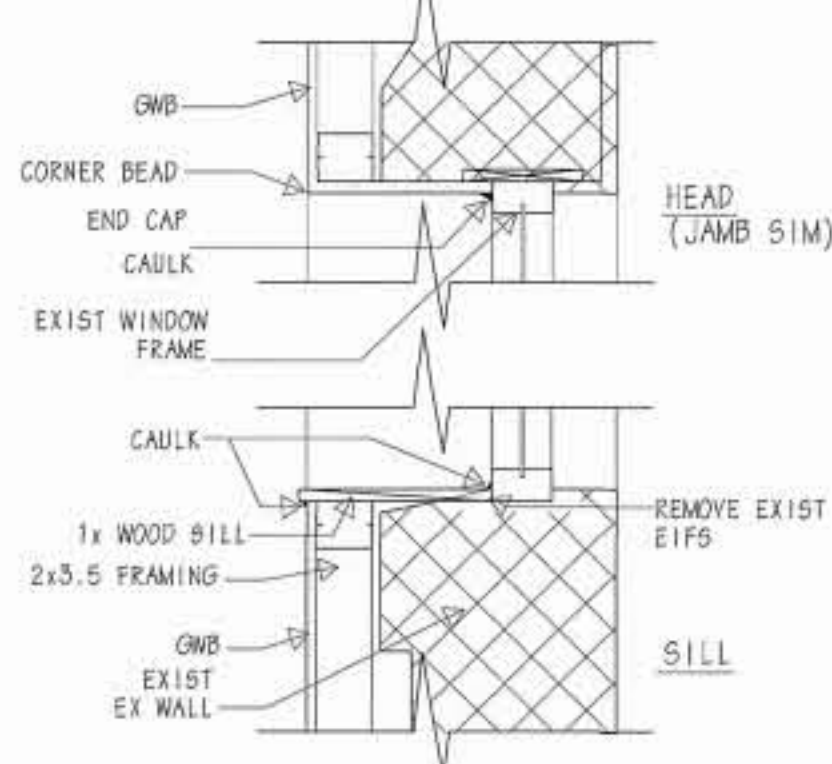
H DETAIL
3/4"=1'-0"



I DETAIL
3/4"=1'-0"



J DETAIL
1"=1'-0"



K DETAIL
1"=1'-0"

100% REVIEW 6/2/99

 Henry Adams, Inc. Consulting Engineers 600 Baltimore Avenue Baltimore, MD 21204-4079 410.377-0549 410.286.6500		WALTER REED ARMY MEDICAL CENTER DIRECTORATE OF ENGINEERING AND HOUSING WASHINGTON, D.C. 20307-5001	
ARCHITECT PETER C. DOO ARCHITECTS 6800 YORK ROAD SUITE 200 BALTIMORE, MARYLAND 21212 410.377-0790 FAX		STORAGE ADDITION TO FOREST GLEN ANNEX BUILDING NO. 501	
PROJECT NO. - FW 00009-98-J PLAN, DETAILS		PROJECT NO. - FW 00009-98-J SHEET 7 OF 34	
REVISION DATE DESCRIPTION BY		APPROVED BY:	
REVIEWED BY:		DATE:	
FIRE CHIEF:		FACILITIES ENGINEER:	
CH OPERATIONS DIV.:		DATE:	
CH INSPECTION BR.:		PROJECT NO.:	
SAFETY OFFICER:		SCALE: AS NOTED	
PREVENTIVE MEDICINE:		SHEET 7 OF 34	

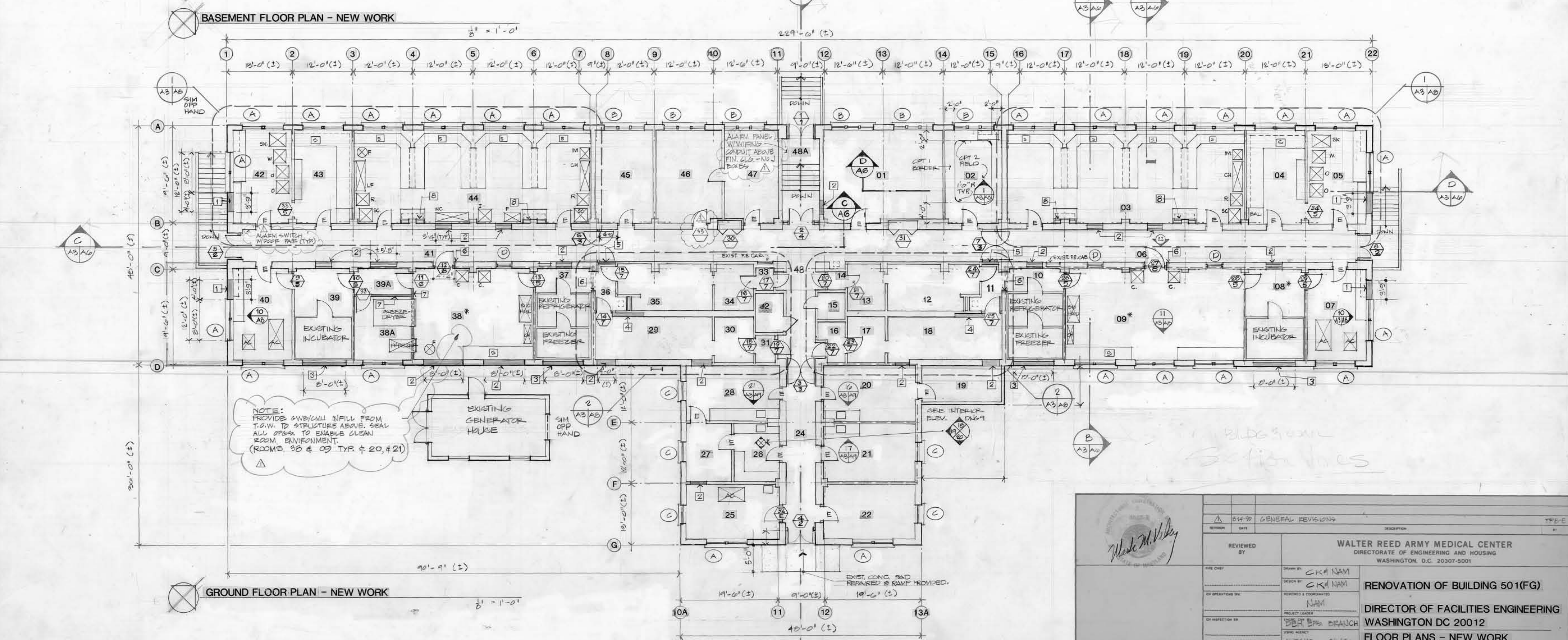
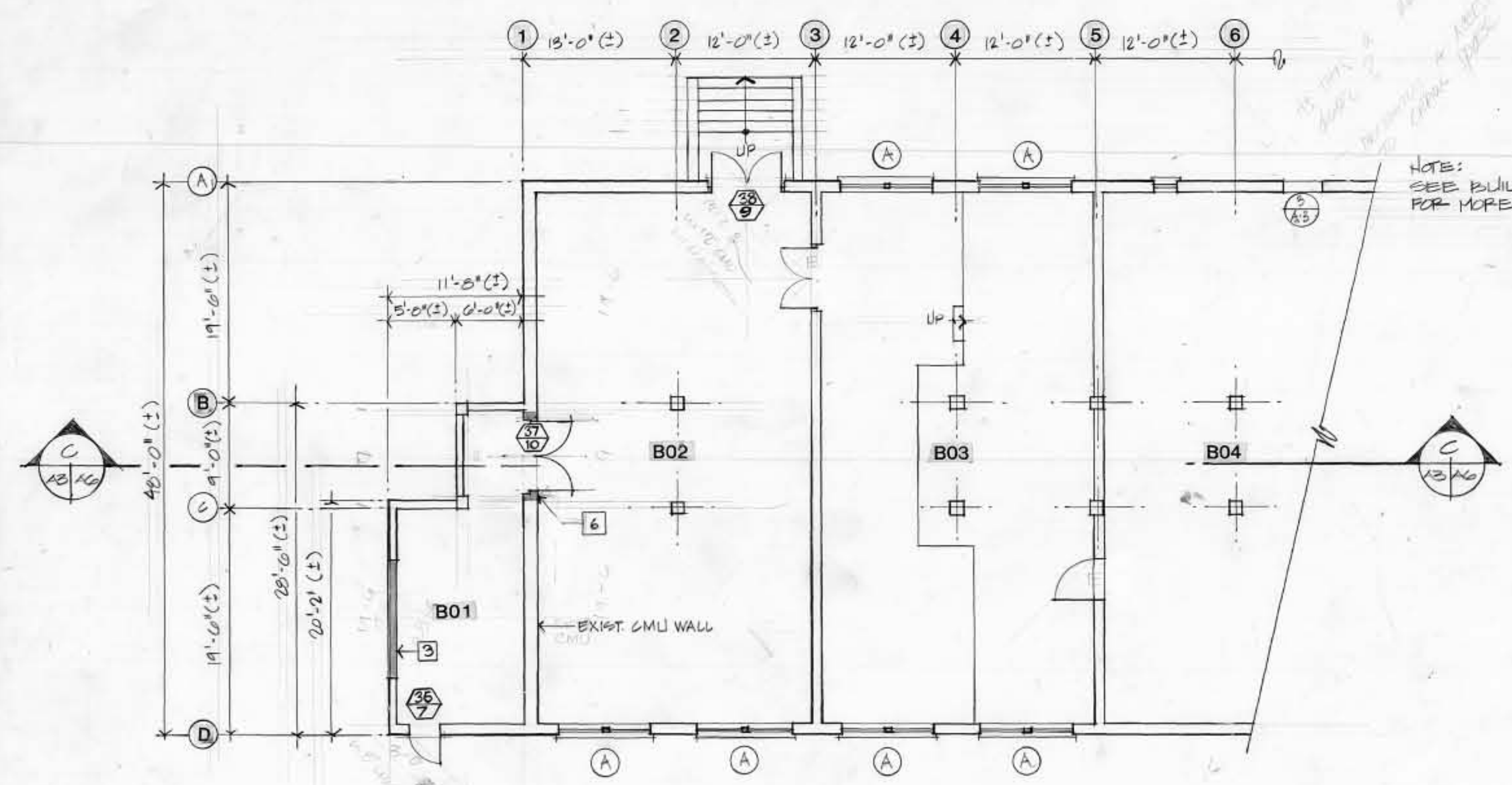
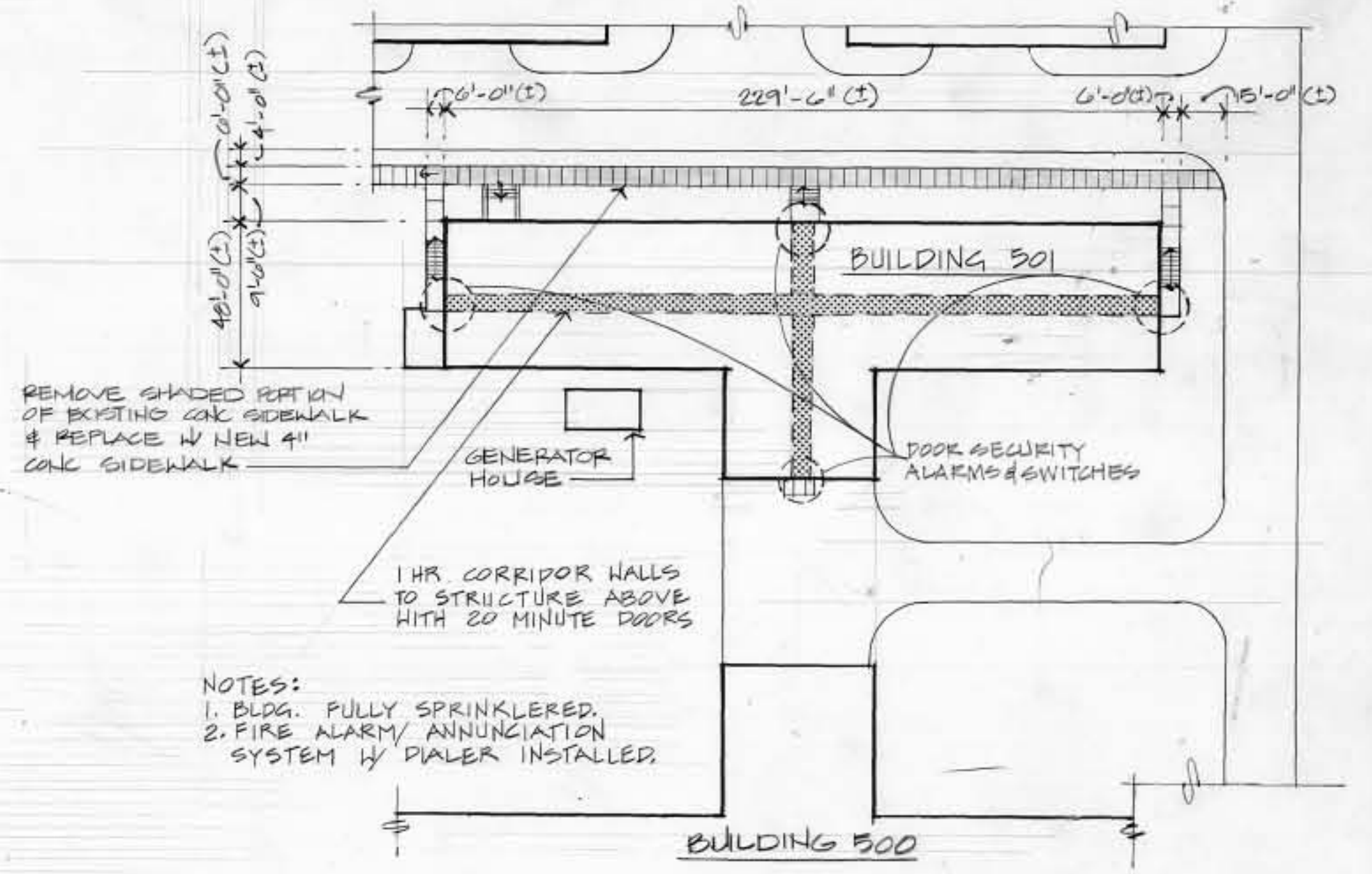
A04

CONSTRUCTION NOTES:

1. PARTIALLY FILL OPENING WITH CMU TO ALIGN WITH EXISTING EXTERIOR & INTERIOR WALL SURFACES TO EXTENT NOTED ON PLAN.
2. FILL MASONRY OPENING WITH CMU/CGSU TO ALIGN WITH, AND MATCH EXISTING EXTERIOR & INTERIOR WALL, ADJACENT SURFACES.
3. FILL MASONRY OPENING WITH 8" MIN CMU TO ALIGN WITH & MATCH. EXTERIOR BLDG ADJACENT SURFACES.
4. BUILD OUT WALL WITH CGSU TO ACHIEVE EVEN WALL FACE AND MATCH ADJACENT SURFACES.
5. CLOSE CORRIDOR ACCESS WITH CGSU TO MATCH EXISTING ADJACENT SURFACE.
6. REPAIR EDGES & JAMBS AS NECESSARY WHERE SECTION OF CGSU WALLS HAVE BEEN REMOVED, TO CREATE NEW OPENINGS, AND PROVIDE PRE-CAST OR BOND BEAM LINTELS ABOVE.
7. NEW DRYWALL CONSTRUCTION CONSISTING OF 5/8" GWB ON EITHER SIDE OF 3 5/8" METAL STUDS AT 16" O/C.
8. FURR AROUND EXISTING COLUMN AS INDICATED WITH 2 1/2" METAL STUDS AND 5/8" GWB.

GENERAL NOTES:

- a. ROOM NUMBERS 38 & 09 ARE "CLEAN" ROOM ENVIRONMENTS, WITH SPECIALISED HVAC REQUIREMENTS. SEE MECH. DWG/MG.
- b. PROVIDE NEW CEILINGS THROUGHOUT, SEE DWGS. A-7 & A-10.
- c. GOVT. FURNISHED EQUIP INDICATED THUS: SEE ELEC. EQUIP SCHEDULE SH. E-7.
- d. PROVIDE NEW FLOORING AS PER FINISH SCHEDULE.



<p>VELSEY ARCHITECTS AIA + MARTIN REDDY ARCHITECTS A JOINT VENTURE 4401 EAST WEST HIGHWAY • SUITE 400 BETHESDA • MARYLAND • 20814</p>	<p>REVISION: 01/19/90 GENERAL REVISIONS</p>	<p>DATE: 01/19/90</p>	<p>DESCRIPTION: WALTER REED ARMY MEDICAL CENTER DIRECTORATE OF ENGINEERING AND HOUSING WASHINGTON, D.C. 20307-5001</p>	<p>TYPE: RFP</p>
	<p>REVIEWED BY: [Signature]</p>	<p>PROJECT LEADER: WPAK</p>	<p>DATE: 01/19/90</p>	<p>PROJECT NO: 4-12</p>
	<p>PROJECT LEADER: NAM</p>	<p>DESIGNER: CKA NAM</p>	<p>DATE: 01/19/90</p>	<p>PROJECT NO: 4-12</p>
	<p>PROJECT LEADER: NAM</p>	<p>DESIGNER: CKA NAM</p>	<p>DATE: 01/19/90</p>	<p>PROJECT NO: 4-12</p>