

Umetco Minerals Corporation



P.O. BOX 1029
GRAND JUNCTION, COLORADO 81502
☎ (970) 245-3700

June 8, 2011

Mr. Dominic Orlando, Project Manager
U.S. Nuclear Regulatory Commission
Fuel Cycle Facilities Branch
Division of Fuel Cycle Safety and Safeguards
Office of Nuclear Material Safety and Safeguards
Mail Stop T-8-A-33
Two White Flint North, 11545 Rockville Pike
Rockville, Maryland 20852-2738

Subject: Above Grade Tailings Impoundment and A-9 Repository Erosion Protection Enhancement Design Report

Reference: LicenseSUA-648, Docket No. 40-0299

Dear Mr. Orlando,

Pursuant to our telephone conversation of June 7, 2011, regarding the Gas Hills Erosion Protection Enhancement Design Report proposal, Umetco would like to make the following clarifications to NRC questions and comments:

1. At the height of construction activities Umetco expects approximately 20- to 25-people will be working 10-hours/day, 5-days a week, for approximately 4.5 months beginning on July 5, 2011. A preliminary construction schedule is attached to assist in scheduling NRC site inspections of the site during the summer of 2011.
2. The Type B riprap removal and replacement is included in Bid Item No. 5.4 – Remove and Replace Existing Type C Erosion Protection Riprap on the AGTI and A-9 Repository. Upon review the amount of Type B riprap (2,085-cubic yards) to be removed and replaced on the AGTI was not added into the total. The quantity for Bid Item 5.4 has been increased from 56,850-cubic yards to 58,950-cubic yards. The added 30/70 bedding material to be placed beneath the Type B riprap) was correctly included in Bid Items 5.1 and 5.2.

FSME21

Mr. Dominic Orlando, Project Manager
June 8, 2011
Page two

3. Clarify AGTI area to receive the 30/70 bedding treatment, the drawing shows 42.8 acres but the quantity calculations only show 1,500,000-sf. The area to receive the 30/70 bedding material totals 1,487,337-square feet. This value added to the area of the access bands (401,277-square feet) equals 1,888,614-square feet. Forty two point eight acres (42.8-acres) equals 1,864,368-square feet. The difference is attributed to the slope correction factor considered in the detailed quantity determination.

4. The Unit Price Bid for Bid Item No. 10 – Fencing, represents the cost for installation of new fencing materials.

5. The value of \$30,363.25 for Bid Item No. 8 – Stabilization of Off-Site Erosion Features has been included in the cost estimate.

6. Bid Item No. 11 – Site Reclamation includes the re-grading and shaping of all disturbed areas, including erosion enhancement areas. The Site will be returned to its existing condition.

7. The quantity for Bid Item 12.1 has been increased from 15,100-cubic yards to 17,910-cubic yards.

A revised Bid Schedule/Cost Estimate is enclosed which includes the corrections noted above and the actual Third Party Unit Prices bid (including overhead and profit) for the various Items of work on May 27, 2011. The revised estimate also includes a 12-percent mark up for URS Corp. oversight and a 15-percent mark up for contingencies.

Thank you for expediting the review process on this matter. If you have any questions, comments or require additional information please contact me at (970) 256-8889.

Sincerely,

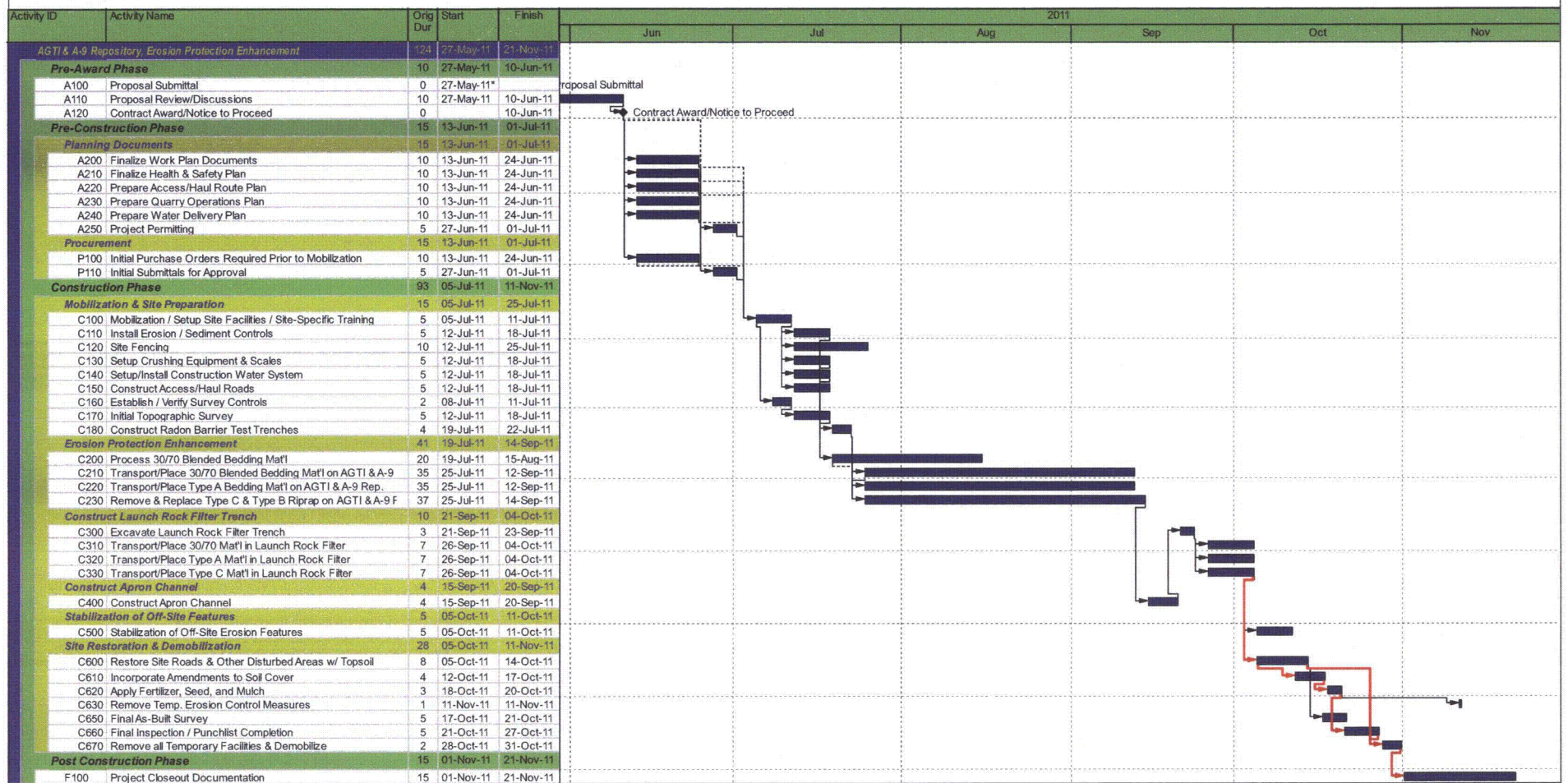
A handwritten signature in black ink, appearing to read "Thomas E. Gieck". The signature is fluid and cursive, with a large initial "T" and "G".

Tom Gieck
Remediation Leader
TEG/jfc

Attachments: As stated

Cc: Mark Moxley – WDEQ, w/attachments

CONSTRUCTION SCHEDULE



Actual Work
 Milestone

Remaining Work

Critical Remaining Work

PRELIMINARY SCHEDULE

EAST HILLS RECLAMATION PROJECT, EROSION PROTECTION ENHANCEMENT

CAPE

Bid Schedule Sheet
for
East Gas Hills, WY, Erosion Protection Enhancement Project
NRC Cost Estimate, May 9, 2011, Revised June 8, 2011

Item	Reclamation Construction Task	Quantity	Unit	Third Party Unit Price Bid	Construction Oversight (12%)	Unit Cost w/Oversight	Amount in U. S. dollars
1	Mobilization / Demobilization	1	Lump Sum	\$151,032.22	\$18,123.87	\$169,156.09	\$169,156.09
2	Construction Water System and Dust Control During Construction	1	Lump Sum	\$102,261.88	\$12,271.43	\$114,533.31	\$114,533.31
3	Establish Access and Haul Routes	1	Lump Sum	\$216,460.79	\$25,975.29	\$242,436.08	\$242,436.08
4	Radon Barrier Test Trenches	425	Cubic Yards	\$61.88	\$7.43	\$69.31	\$29,454.88
5	Erosion Protection Enhancement						
5.1	Process 30/70 Blended Bedding Material	18,800	Cubic Yards	\$25.39	\$3.05	\$28.44	\$534,611.84
5.2	Transportation and Placement of 30/70 Blended Bedding Material on the AGTI and A-9 Repository	17,875	Cubic Yards	\$11.35	\$1.36	\$12.71	\$227,227.00
5.3	Transportation and Placement of Type A Bedding Material on the AGTI and A-9 Repository	15,100	Cubic Yards	\$10.56	\$1.27	\$11.83	\$178,590.72
5.4	Remove and Replace Existing Type C Erosion Protection Riprap on the AGTI and A-9 Repository	58,950	Cubic Yards	\$2.89	\$0.35	\$3.24	\$190,809.36
5.5	Transportation and Placement of 30/70 Blended Bedding Material in the Launch Rock Filter	910	Cubic Yards	\$11.81	\$1.42	\$13.23	\$12,036.75
5.6	Transportation and Placement of Type A Bedding Material in the Launch Rock Filter	2,010	Cubic Yards	\$10.85	\$1.30	\$12.15	\$24,425.52
5.7	Transportation and Placement of Type C Erosion Protection Riprap in the Launch Rock Filter	1,700	Cubic Yards	\$12.18	\$1.46	\$13.64	\$23,190.72
5.8	Transportation and Placement of Type A Bedding Material on the Apron Channel	800	Cubic Yards	\$11.73	\$1.41	\$13.14	\$10,510.08

Item	Reclamation Construction Task	Quantity	Unit	Third Party Unit Price Bid	Construction Oversight (12%)	Unit Cost w/Oversight	Amount in U. S. dollars
5.9	Transportation and Placement of Type C Erosion Protection Riprap on the Apron Channel	2,150	Cubic Yards	\$9.95	\$1.19	\$11.14	\$23,959.60
5.10	Transportation and Placement of Type C Erosion Protection Riprap to Stabilize Off-Site Erosion Features	500	Cubic Yards	\$23.63	\$2.84	\$26.47	\$13,232.80
6	Launch Rock Filter Trench Excavation	3,700	Cubic Yards	\$13.10	\$1.57	\$14.67	\$54,286.40
7	Apron Channel Construction	300	Linear Feet	\$58.10	\$6.97	\$65.07	\$19,521.60
8	Stabilization of Off-Site Erosion Features	1	Lump Sum	\$30,363.25	\$3,643.59	\$34,006.84	\$34,006.84
9. Well Abandonment							
9.1	Ground Water Well Abandonment	986	Linear Feet	\$29.98	\$3.60	\$33.58	\$33,107.51
9.2	Line Marker Well Abandonment	2	Each	\$1,187.14	\$142.46	\$1,329.60	\$2,659.19
10	Fencing	3,500	Linear Feet	\$8.89	\$1.07	\$9.96	\$34,848.80
11	Site Reclamation	10.5	Acres	\$11,635.71	\$1,396.29	\$13,032.00	\$136,835.95
12. New Quarry Operations							
12.1	Process and Stockpile Type A Bedding Material	17,910	Cubic Yards	\$20.88	\$2.51	\$23.39	\$418,836.10
12.2	Process and Stockpile Type B Bedding Material	17,875	Cubic Yards	\$21.43	\$2.57	\$24.00	\$429,028.60
12.3	Process and Stockpile Type C Rock Material	4,350	Cubic Yards	\$18.10	\$2.17	\$20.27	\$88,183.20
Sub-Total							\$3,045,488.94
15% Contingency							\$456,823.34
Total:							\$3,502,312.28

- A. **QUANTITIES:** It is to be understood that the estimated quantities (where applicable) of each item set forth on this Bid Sheet are approximate only and are subject to revision based on actual measured quantities.
- B. **BIDDER'S SOLE RESPONSIBILITY:** The undersigned has checked the foregoing figures inserted by him and understands that they are the Bidder's sole responsibility and that URS will not be responsible for any errors or omissions on the part of undersigned in preparing this Bid.
- C. **T&M RATE SCHEDULE:** The Bidder shall provide a standard time and materials rate schedule as an attachment to this Bid Sheet that includes labor and equipment rates for use if additional work is requested. The rate schedule shall include fully burdened labor rates, equipment rates (fully fueled and maintained, not including operator), standby equipment rates, and markup for materials.
- D. **COMPENSATION:** In every case the Unit Price/Unit Cost shall be applied to the applicable Unit cited in the Bid Schedule and all costs and reimbursements are understood to be made in U. S. dollars.