

May 12, 2011

Ms. Wanda Wells  
Crow Creek Sioux Tribe  
P.O. Box 50  
Ft. Thompson, SD 57339-0500

SUBJECT: INVITATION FOR INFORMAL INFORMATION-GATHERING MEETING  
PERTAINING TO THE DEWEY-BURDOCK, CROW BUTTE NORTH TREND,  
AND CROW BUTTE LICENSE RENEWAL, *IN-SITU* URANIUM RECOVERY  
PROJECTS

Dear Ms. Wells:

The U.S. Nuclear Regulatory Commission (NRC) staff would like to extend an invitation to the Crow Creek Sioux Tribe officials (Tribal Historic Preservation Officers and/or Cultural Resources Officers) to assist the NRC in the identification of tribal historic sites, traditional cultural properties, and cultural resources that may be affected by the actions proposed by Cameco Resources Inc. and Powertech Inc. We are extending this invitation because you indicated that you would like to be a consulting party. The NRC will hold an informal information-gathering meeting on June 7, 8, and 9, 2011, at the Prairie Wind Casino and Hotel on the Pine Ridge Reservation in South Dakota.

The information-gathering meeting will include a staff-to-staff session on June 8, 2011, at the Prairie Wind Casino and Hotel on the Pine Ridge Reservation and two days of site visits (June 7 and 9, 2011) to the proposed facilities. The NRC staff has coordinated with Cameco Resources Inc. and Powertech Inc. to arrange for visits to the proposed facilities. The itinerary for the site visit is included in Enclosure 4. Although attendance at the site visits is optional, Tribal representatives are encouraged to participate because the visits will provide an opportunity to tour an existing facility and to view the proposed project areas.

The NRC is in the process of conducting environmental reviews for a number of license applications involving in-situ uranium recovery facilities. These applications include Cameco Resources Inc.'s applications for Crow Butte North Trend and Crow Butte License Renewal, as well as Powertech (USA) Inc.'s application for Dewey-Burdock. The NRC is undertaking these reviews as part of our responsibilities under the National Environmental Policy Act (NEPA). Our reviews will culminate in the issuance of an Environmental Assessment, Environmental Impact Statement, or a Supplemental Environmental Impact Statement. These documents will include analyses of potential impacts to historic and cultural properties. In accordance with the National Historic Preservation Act regulation 36 CFR 800.8(c), we are coordinating our Section 106 review with our NEPA assessment. As part of our reviews, the NRC requests the input of Tribes concerned with the effects the proposed actions may have on historic and cultural properties, so their views may be considered in the decision-making process.

The NRC staff is interested in identifying areas within the Crow Butte sites and/or Dewey-Burdock site that have traditional religious or cultural significance to the Crow Creek Sioux Tribe of South Dakota, so these may be considered in our environmental reviews. Maps identifying the specific locations of each proposed project are enclosed for your reference (Enclosure 1).

Digital copies of the publicly available archaeological surveys prepared for the Crow Butte Resources and Dewey-Burdock projects are enclosed. These reports are contained in 3 -diskettes (one for Crow Butte and two for Dewey-Burdock- Enclosure 3).

Please provide the NRC staff with copies of, or references to, documentary or published materials you like the staff to review.

NRC staff, in conjunction with the Oglala Sioux Tribe has prepared a tentative agenda for this meeting. The draft agenda is enclosed in this letter for your review (Enclosure 2).

Please identify any additional topics you would like to discuss and let us know by May 20, 2011, how many of your tribal representatives will be attending this meeting. We request your reply be addressed to Mr. Larry Camper, Mail Stop T-8F05, Washington, D.C. 20555. In order to attend the site visit, NRC must have your confirmation by this date to ensure adequate transportation is available for all participants. If possible, provide us with the name and job descriptions of tribal representatives who plan to participate. Ms. Haimanot Yilma and Mr. Nathan Goodman will follow up with you via a phone call to finalize meeting logistics.

The applicants will be providing roundtrip transportation between the Prairie Wind Casino and Hotel on the Pine Ridge Reservation and the Crow Butte and Dewey-Burdock sites. However, other travel costs associated with the June 7–9, 2011, meeting will not be covered.

If you have any questions regarding this meeting, please contact my staff members, Ms. Yilma (via email at [Haimanot.Yilma@nrc.gov](mailto:Haimanot.Yilma@nrc.gov) or via phone at 301-415-8029) or Mr. Goodman (via email at [Nathan.Goodman@nrc.gov](mailto:Nathan.Goodman@nrc.gov) or via phone at 301-415-2703).

Sincerely,

**/RA/ D. Persinko for LCamper**

Larry W. Camper, Director  
Division of Waste Management  
and Environmental Protection  
Office of Federal and State Materials  
and Environmental Management Programs

Docket No.: 040-09075

Docket No.: 040-08943

Enclosures:

1. Map of Crow Butte and Dewey-Burdock Proposed Project Areas/Boundary
2. Draft Agenda
3. Archeological Surveys of the Proposed Crow Butte & Dewey-Burdock Projects
4. Itinerary for Site Visits

cc: Chairman Duane Big Eagle

Digital copies of the publicly available archaeological surveys prepared for the Crow Butte Resources and Dewey-Burdock projects are enclosed. These reports are contained in 3 -diskettes (one for Crow Butte and two for Dewey-Burdock- Enclosure 3).

Please provide the NRC staff with copies of or references to documentary or published materials you like the staff to review.

NRC staff, in conjunction with the Oglala Sioux Tribe has prepared a tentative agenda for this meeting. The draft agenda is enclosed in this letter for your review (Enclosure 2).

Please identify any additional topics you would like to discuss and let us know by May 20, 2011, how many of your tribal representatives will be attending this meeting. We request your reply be addressed to Mr. Larry Camper, Mail Stop T-8F05, Washington, D.C. 20555. In order to attend the site visit, NRC must have your confirmation by this date to ensure adequate transportation is available for all participants. If possible, provide us with the name and job descriptions of tribal representatives who plan to participate. Ms. Haimanot Yilma and Mr. Nathan Goodman will follow up with you via a phone call to finalize meeting logistics.

The applicants will be providing roundtrip transportation between the Prairie Wind Casino and Hotel on the Pine Ridge Reservation and the Crow Butte and Dewey-Burdock sites. However, other travel costs associated with the June 7–9, 2011, meeting will not be covered.

If you have any questions regarding this meeting, please contact my staff members, Ms. Yilma (via email at [Haimanot.Yilma@nrc.gov](mailto:Haimanot.Yilma@nrc.gov) or via phone at 301-415-8029) or Mr. Goodman (via email at [Nathan.Goodman@nrc.gov](mailto:Nathan.Goodman@nrc.gov) or via phone at 301-415-2703).

Sincerely,

Larry W. Camper, Director  
 Division of Waste Management  
 and Environmental Protection  
 Office of Federal and State Materials  
 and Environmental Management Programs

Docket No.: 040-09075

Docket No.: 040-08943

Enclosures:

1. Map of Crow Butte and Dewey-Burdock Proposed Project Areas/Boundary
2. Draft Agenda
3. Archeological Surveys of the Proposed Crow Butte & Dewey-Burdock Projects
4. Itinerary for Site Visits

cc: Chairman Duane Big Eagle

DISTRIBUTION: MClark BVonTill RBurrows BKlukan PJehle RTurtill KMcConnell

**ML111320128**

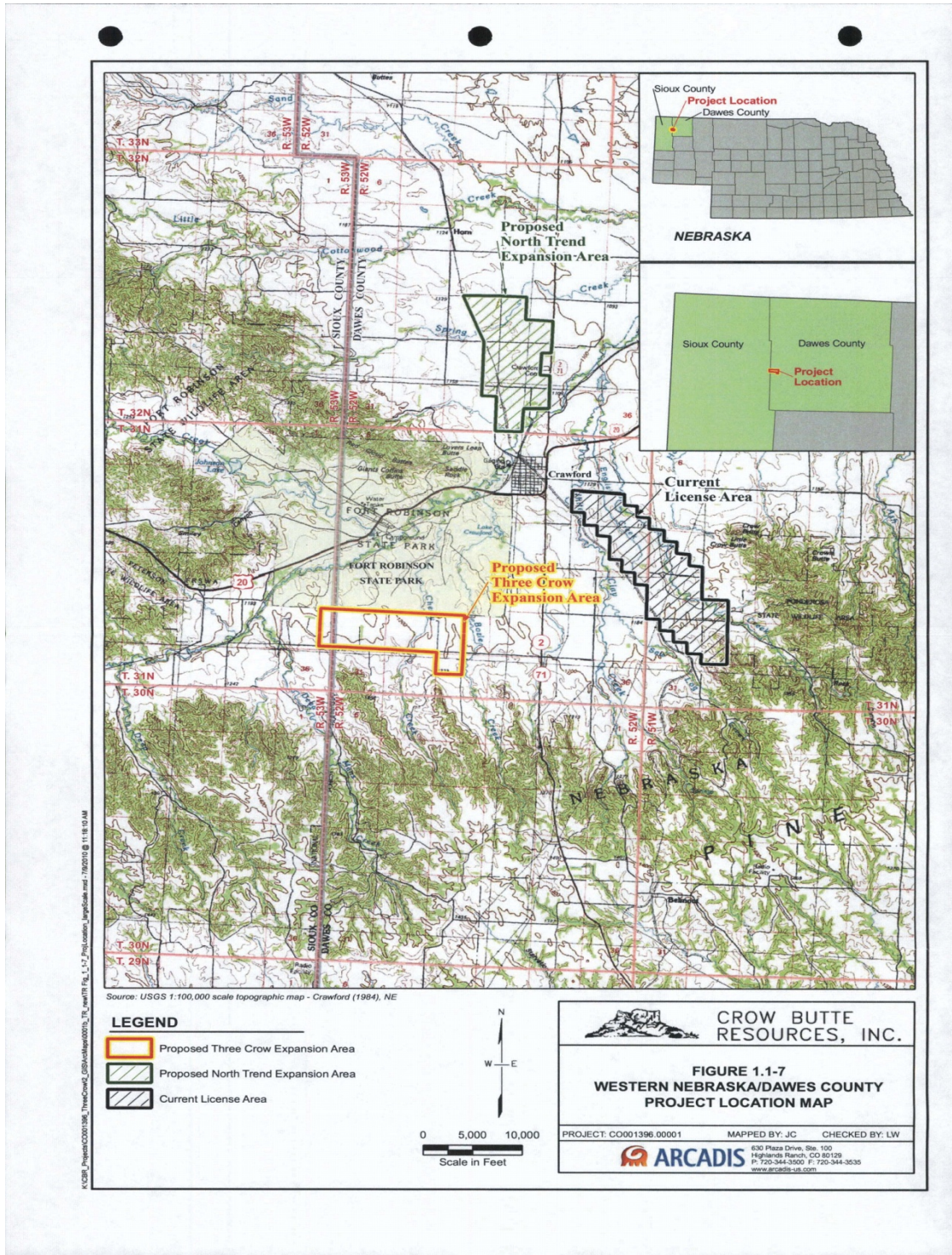
OFC	EPPAD	EPPAD	EPPAD	EPPAD	OGC	OGC	EPPAD	EPPAD	DWMEP
NAME	HYilma	NGoodman	AWalker-Smith	JDavis	BKlukan	PJehle	KHsueh	DPersinko	DPersino for LCamper
DATE	4/26/11	4/26/11	04/27/11	04/27/11	5/4/11	5/5/11	5/9/11	5/12/11	5/12/11

**OFFICIAL RECORD COPY**



# Map of Proposed Projects Area

## Cameco - Crow Butte Projects (North Trend, License Renewal and future Three Crow)





# Map of Proposed Project Area

## Powertech - Dewey-Burdock Project



POWERTECH (USA) INC.

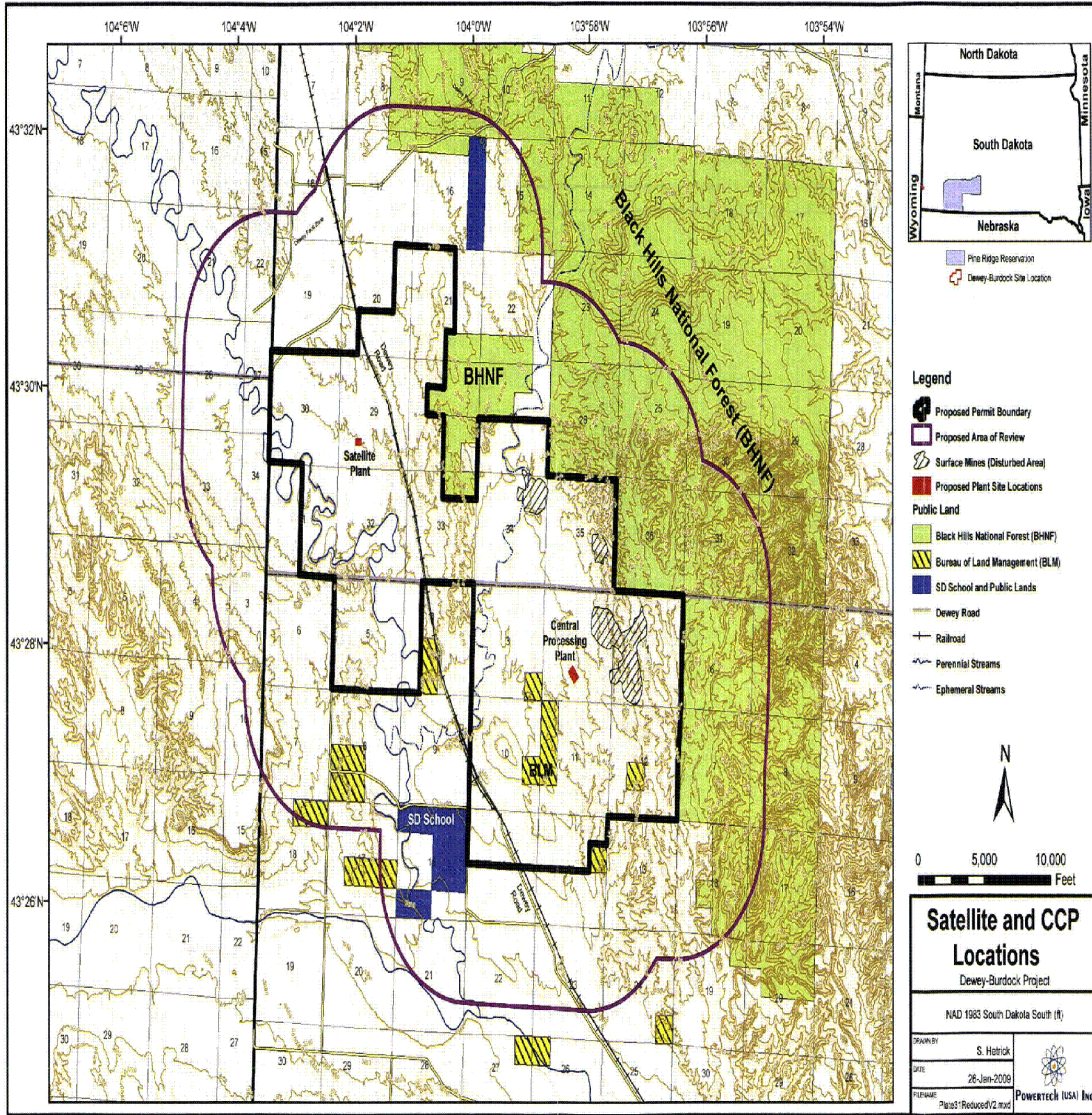


Figure I.4-1: Satellite and CPP Locations