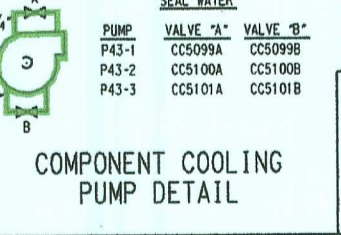
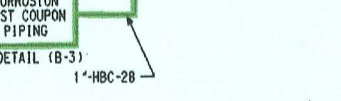
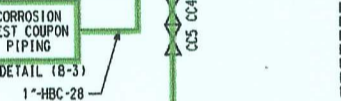
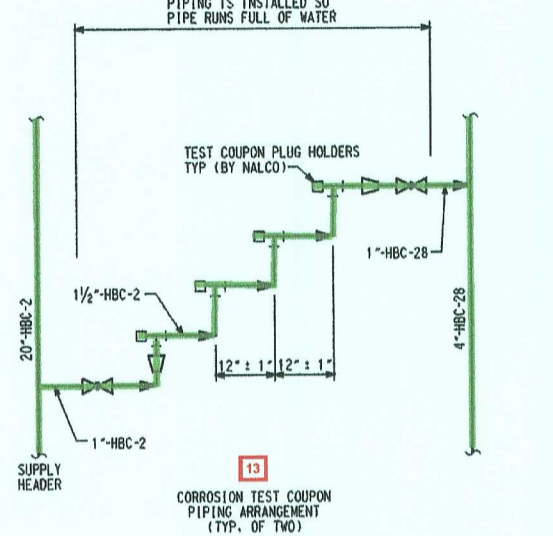


COMPONENT COOLING PUMPS MOTOR BEARING OIL DRAIN AND WINDING TEMPERATURE INSTRUMENTATION

LOCATION	TE 1-1	TE 1-2	TE 1-3
MOTOR STATOR	1657A TO80	1684A TO88	1686A TO96
O/B MTR BRG P/E	1657C TO78	1684C TO87	1686C TO95
O/B PUMP BRG P/E	1657E TO77	1684E TO85	1686E TO93



- NOTES:
- FOR GENERAL NOTES AND PIPING SYMBOLS AND PID INDEX SEE DRAWING M-001.
 - FOR INSTRUMENTATION SYMBOLS SEE DRAWING M-002.
 - CENTER LINE OF COMPONENT COOLING SURGE TANK IS TO BE HIGHEST POINT IN THE COMPONENT COOLING WATER SYSTEM.
 - SYSTEM FUNCTIONS SHOWN ARE FOR NORMAL OPERATION UNDER FULL LOAD.
 - ALL DRAINGS, UNLESS OTHERWISE NOTED ON DIAGRAM, TO BE LOCALLY PIPED TO THE NEAREST EQUIPMENT DRAIN.
 - DELETED.
 - THE CONNECTIONS ARE FOR ISOLATION VALVES LEAK TEST.
 - UNLESS OTHERWISE NOTED, ALL DRAINS WILL BE 1" AND ALL VENTS 3/4". LINE IDENTIFICATION SAME AS HEADER.
 - RADIATION ELEMENTS RE-1412 & RE-1415 ARE "SNOW PLOUGH" TYPE AND DO NOT PENETRATE PIPING.
 - DELETED.
 - THE ONLY VENT OR DRAIN LINE CAPS REQUIRED TO BE SHOWN ON PIPING AND INSTRUMENTATION DIAGRAMS ARE THOSE CONTROLLED UNDER DB-OP-0009 (FORMERLY ADI-93-03). THE ACTUAL TERMINATION OF ALL OTHER VENTS OR DRAINS ARE NOT SHOWN AND INSTEAD, AN OPEN ENDED PIPE IS DISPLAYED.
 - WHERE NOTED, TANK CAPACITY IS NOMINAL. WHERE APPLICABLE, SEE DB-OP-0076 (TANK LEVEL CALIBRATION CURVES) FOR INDICATED LEVEL VS VOLUME RELATIONSHIP. (REF: PCAR 96-0976)
 - AN 1/2" THICK BLANK PLATE HAS BEEN INSERTED BETWEEN THESE FLANGES PER MOD 98-0050-00.
 - SOME VALVES NUMBERED WITH A "TP" DESIGNATION (I.e. PK32) ARE BEING USED TO SUPPLY DEMINERALIZED WATER. REFERENCE MOD 95-0050.

LR NOTES:

A. FOR GENERAL LICENSE RENEWAL NOTES REFER TO LR-M001-B1.

B. UPDATED SH BOUNDARY IS AT THE INDICATED LOCATION, AS SHOWN ON PID M-036A REV. 28.

LICENSE RENEWAL BOUNDARY DRAWING LR-M036A REV. 2

SYSTEMS SHOWN ON THIS DRAWING:

07: SERVICE WATER
13: COMPONENT COOLING & DEMINERALIZED WATER STORAGE
23: SAMPLING
24: NONSAFETY AFFECTING SAFETY

BECHTEL ASSOCIATES
PROFESSIONAL CORPORATION (OHIO)
GAITHERSBURG, MARYLAND

DAVIS-BESSE NUCLEAR POWER STATION
UNIT NO. 1

THE TOLEDO EDISON COMPANY

PIPING & INSTRUMENT DIAGRAM
COMPONENT COOLING
WATER SYSTEM

JOB NO.	DRAWING NO.	REV.
12501	M-036A	28

THIS DRAWING REV. 0 SUPERSEDES IN PART DWG. M-036A REV. 26. WORK THIS DWG. WITH M-036B & M-036C.

DATE: 08-02-07 14 34744 E SIZE

012945