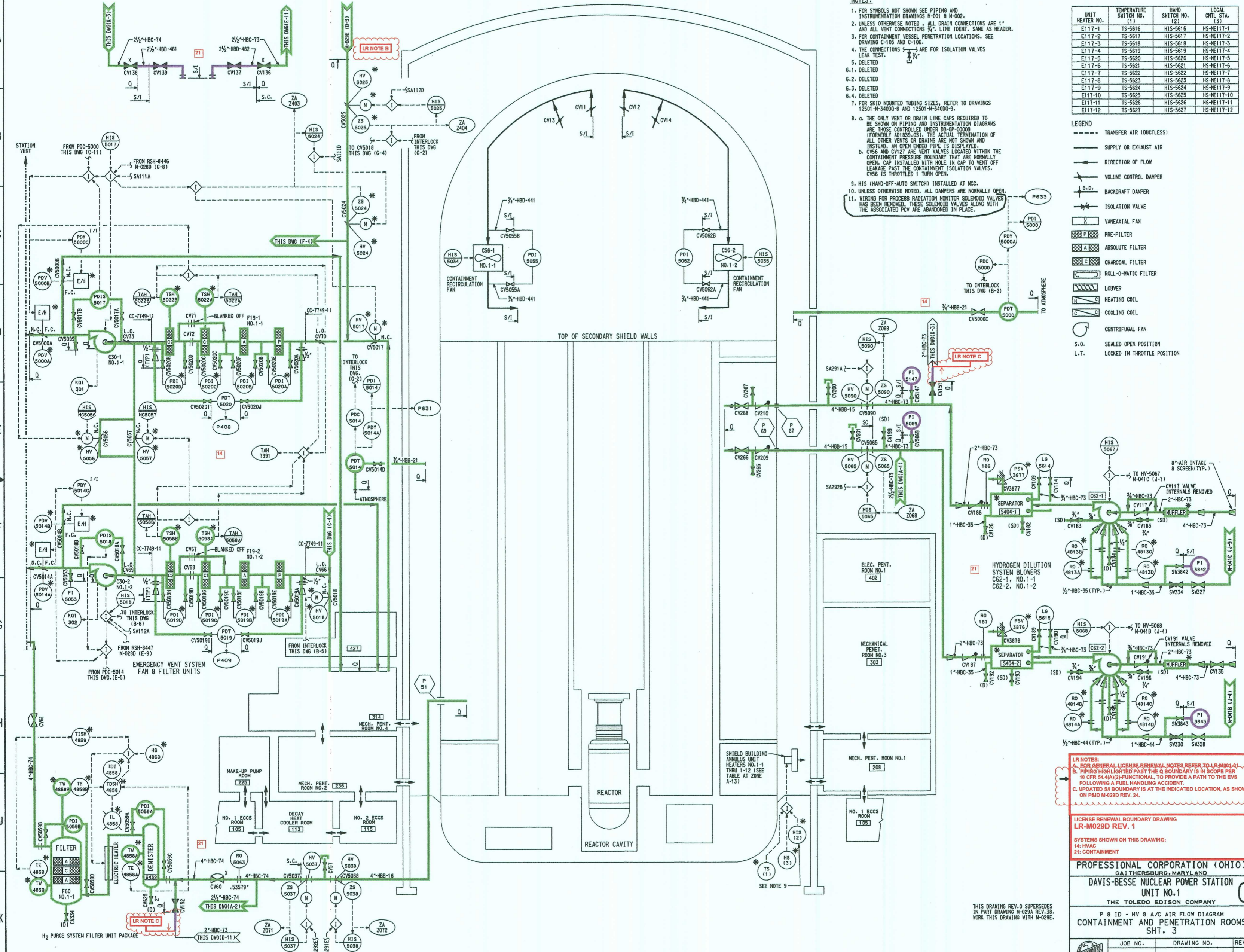


- NOTES:**
- FOR SYMBOLS NOT SHOWN SEE PIPING AND INSTRUMENTATION DRAWINGS M-001 & M-002.
  - UNLESS OTHERWISE NOTED, ALL DRAIN CONNECTIONS ARE 1" AND ALL VENT CONNECTIONS 1/2" LINE IDENT. SAME AS HEADER.
  - FOR CONTAINMENT VESSEL PENETRATION LOCATIONS, SEE DRAWING C-105 AND C-106.
  - THE CONNECTIONS  $\frac{1}{2}$ " AND  $\frac{3}{4}$ " ARE FOR ISOLATION VALVES LEAK TEST.
  - DELETED
  - DELETED
  - DELETED
  - DELETED
  - FOR 3/16" MOUNTED TUBING SIZES, REFER TO DRAWINGS 12501-M-34000-4 AND 12501-M-34000-5.
  - THE ONLY VENT OR DRAIN LINE CAPS REQUIRED TO BE SHOWN ON PIPING AND INSTRUMENTATION DIAGRAMS ARE THOSE CONTROLLED UNDER DE-09-00009 (FORMERLY A01839.03). THE ACTUAL TERMINATION OF ALL OTHER VENTS OR DRAINS ARE NOT SHOWN AND INSTEAD, AN OPEN ENDED PIPE IS DISPLAYED.
    - CV566 AND CV127 ARE VENT VALVES LOCATED WITHIN THE CONTAINMENT PRESSURE BOUNDARY THAT ARE NORMALLY OPEN. CAPS INSTALLED WITH HOLE IN CAP TO VENT OFF LEAKAGE PAST THE CONTAINMENT ISOLATION VALVES. CV566 IS THROTTLED, 1 TURN OPEN.
  - HIS (HAND-OFF-AUTO SWITCH) INSTALLED AT MCC.
  - UNLESS OTHERWISE NOTED, ALL DAMPERS ARE NORMALLY OPEN.
  - WIRING FOR PROCESS RADIATION MONITOR SOLENOID VALVES HAS BEEN REMOVED. THESE SOLENOID VALVES ALONG WITH THE ASSOCIATED PCV ARE ABANDONED IN PLACE.

UNIT HEATER NO. (1)	TEMPERATURE SWITCH NO. (2)	HAND SW. NO. (3)	LOCAL CNTL. STA. (3)
E117-1	TS-5616	HIS-5616	HS-NE117-1
E117-2	TS-5617	HIS-5617	HS-NE117-2
E117-3	TS-5618	HIS-5618	HS-NE117-3
E117-4	TS-5619	HIS-5619	HS-NE117-4
E117-5	TS-5620	HIS-5620	HS-NE117-5
E117-6	TS-5621	HIS-5621	HS-NE117-6
E117-7	TS-5622	HIS-5622	HS-NE117-7
E117-8	TS-5623	HIS-5623	HS-NE117-8
E117-9	TS-5624	HIS-5624	HS-NE117-9
E117-10	TS-5625	HIS-5625	HS-NE117-10
E117-11	TS-5626	HIS-5626	HS-NE117-11
E117-12	TS-5627	HIS-5627	HS-NE117-12

- LEGEND**
- TRANSFER AIR (DUCTLESS)
  - SUPPLY OR EXHAUST AIR
  - DIRECTION OF FLOW
  - ∠ VOLUME CONTROL DAMPER
  - B.D. BACKDRAFT DAMPER
  - ISOLATION VALVE
  - ∩ VANEAXIAL FAN
  - ▨ PRE-FILTER
  - ▩ ABSOLUTE FILTER
  - ▧ CHARCOAL FILTER
  - ▦ ROLL-O-MATIC FILTER
  - ▨ LOUVER
  - ▧ HEATING COIL
  - ▦ COOLING COIL
  - ⊙ CENTRIFUGAL FAN
  - S.O. SEALED OPEN POSITION
  - L.T. LOCKED IN THROTTLE POSITION



**LR NOTES:**  
 A. FOR GENERAL LICENSE RENEWAL NOTES REFER TO LR-M029D-1.  
 B. PIPING HIGHLIGHTED PAST THE Q BOUNDARY IS IN SCOPE PER 18 CFR 84.4(A)(2) FUNCTIONAL TO PROVIDE A PATH TO THE EVS FOLLOWING A FUEL HANDLING ACCIDENT.  
 C. UPDATED SA BOUNDARY IS AT THE INDICATED LOCATION, AS SHOWN ON P&ID M-029D REV. 24.

**LICENSE RENEWAL BOUNDARY DRAWING**  
**LR-M029D REV. 1**

SYSTEMS SHOWN ON THIS DRAWING:  
 14: HVAC  
 21: CONTAINMENT

**PROFESSIONAL CORPORATION (OHIO)**  
 641 THESBURG, MARYLAND

**DAVIS-BESSE NUCLEAR POWER STATION**  
 UNIT NO. 1

**THE TOLEDO EDISON COMPANY**

P&ID - HV & A/C AIR FLOW DIAGRAM  
 CONTAINMENT AND PENETRATION ROOMS  
 SHT. 3

JOB NO.	DRAWING NO.	REV.
12501	M-029D	23

THIS DRAWING REV. D SUPERSEDES IN PART DRAWING M-029A REV. 38. WORK THIS DRAWING WITH M-029B.

010233