

**HOSE REEL AND CABINET LOCATIONS**

EQUIP. NO.	BLDG.	FL. ELEV.	LOCATION
HR-2	TURB.	567	COL. E-7-1
HR-3	TURB.	585	COL. A-7
HR-4	TURB.	585	COL. B-10
HR-5	TURB.	585	COL. F-9
HR-6	TURB.	585	COL. E-4
HR-7	TURB.	585	COL. A-3
HR-8	TURB.	603	COL. F-9-5
HR-9	TURB.	603	COL. B-10
HR-10	TURB.	603	COL. A-7
HR-11	TURB.	603	COL. F-5
HR-12	TURB.	623	COL. F-9
HR-13	TURB.	623	COL. F-4
HR-14	TURB.	623	COL. A-5
HR-15	TURB.	623	COL. A-10
HR-16	TURB.	567	COL. E-5
HR-17	TURB.	567	COL. A-7
HR-18	YARD	---	YARD
HR-50	TURB.	603	HEATER BAY-COL. 4 B G
HR-51	TURB.	585	HEATER BAY-COL. 4 B G
HR-52	INTAKE STRUCTURE	585	INTAKE STRUCTURE COL. 4.7 B 1A G

HCS-19	AUX.	566	COL. WD-2
HCS-20	AUX.	585	COL. WD-2
HCS-21	AUX.	567	COL. H-9, HALLWAY
HCS-22	AUX.	565	COL. JF-8-3 OUTSIDE MAKEUP TANK, HALLWAY
HCS-23	AUX.	585	OUTSIDE BUS COOL. ROOM COL. H-3
HCS-24	AUX.	585	N.E. CORNER S.F. POOL COL. H-8.2
HCS-25	AUX.	585	OUTSIDE SOLID WASTE BALER ROOM COL. JF-9
HCS-26	AUX.	603	EQUIPMENT HATCH AREA COL. JC-8.6
HCS-27	AUX.	603	PERSONNEL LOCK AREA COL. H-8.2
HCS-28	AUX.	603	COL. G-7 ELECTRICAL PENETRATION ROOM
HCS-29	AUX.	545	COL. H-10 OUTSIDE ELEVATOR MACHINE ROOM
HCS-30	AUX.	623	COL. G-4 EXHAUSTER EQUIPMENT AREA
HCS-31	AUX.	638	A/C EQUIPMENT ROOM EAST SIDE
HCS-32	AUX.	585	GRATING WALKWAY, ABOVE DECAT HEAT PUMP 1-2
HCS-33	AUX.	585	GRATING WALKWAY, ABOVE DECAT HEAT PUMP 1-1
HCS-34	AUX.	603	COL. G-10, HALLWAY
HCS-35	AUX.	565	COL. J, BY STAIRS IN HALLWAY
HCS-36	AUX.	585	COL. H-8 EAST PENETRATION ROOM
HCS-37	AUX.	585	COL. J-8, BY DUCT CHASE
HCS-38	AUX.	585	WEST PENETRATION ROOM, COL. JE-7
HCS-39	AUX.	603	COL. J02-7.7 WEST ELECTRICAL PENETRATION ROOM
HCS-40	AUX.	603	COL. F-9-3 HALLWAY
HCS-41	AUX.	643	COL. K-7.35
HCS-42	AUX.	623	COL. K-9, BY STAIRS
HCS-43	AUX.	638	A/C EQUIPMENT ROOM-N.W. CORNER
HCS-44	AUX.	623	COL. G-8
HCS-45	AUX.	585	SOUTH WALL EMER. D. G. 1-1 - ROOM 319
HCS-46	AUX.	585	SOUTH WALL EMER. D. G. 1-1 - ROOM 319
HCS-47	AUX.	585	NO.1 MECH. PEN. ROOM @ ANNULUS ENTRANCE
HCS-48	AUX.	565	NO.2 MECH. PEN. ROOM @ ANNULUS ENTRANCE
HCS-49	AUX.	643	WEST MAIN STEAM ROOM #601 @ ENTRANCE

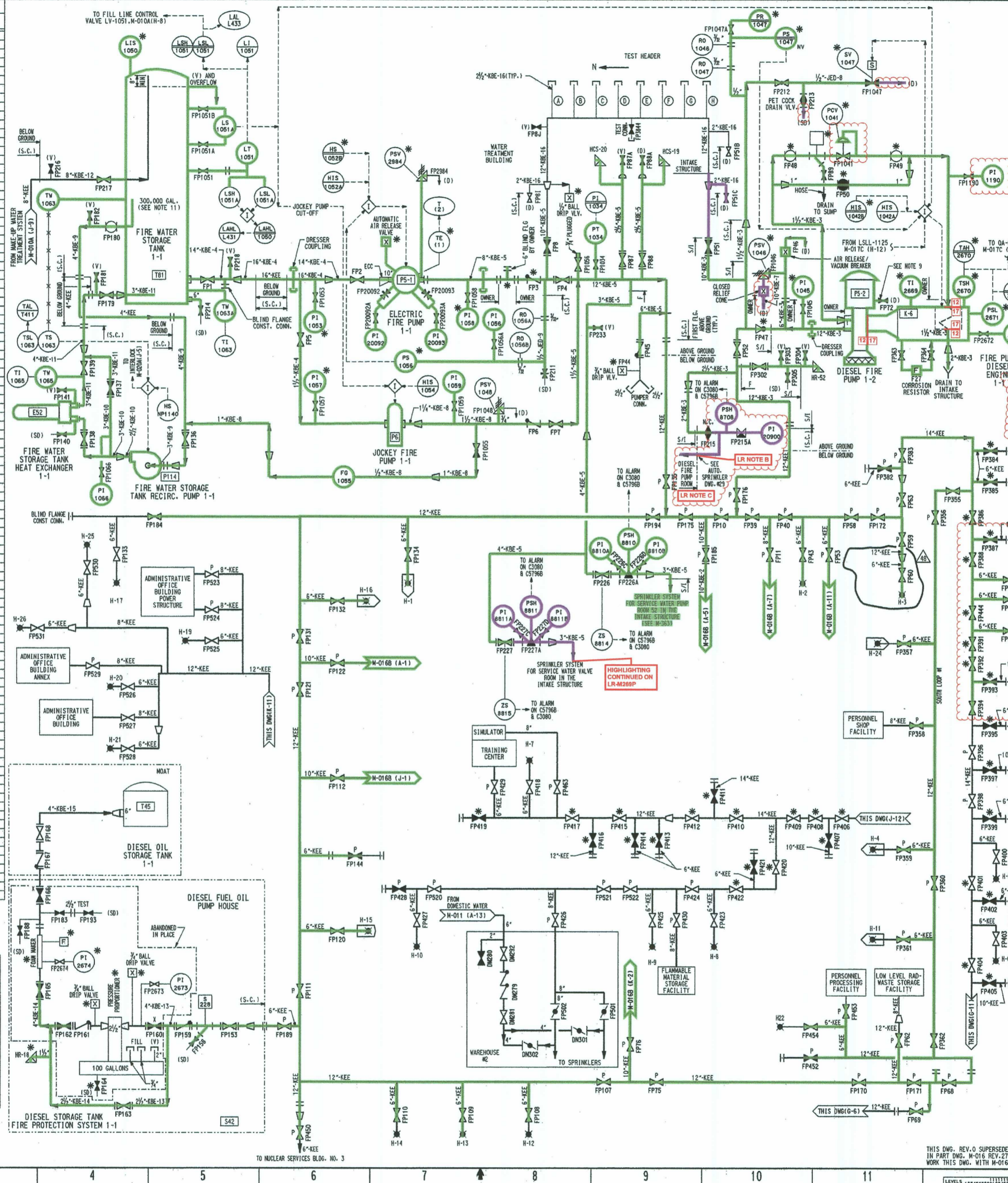
HRK-1	OFFICE	585	CC-9.7
HRK-2	OFFICE	603	BB-10
HRK-3	OFFICE	613	BB-10
HRK-4	OFFICE	623	BB-10
HRK-5	OFFICE	585	AA-7
HRK-6	OFFICE	603	AA-7
HRK-7	OFFICE	613	AA-7
HRK-8	OFFICE	585	AA-4.6
HRK-9	OFFICE	603	AA-4.6
HRK-10	OFFICE	623	AA-4.6
HRK-11	OFFICE	638	BB-4.6
HRK-15	AUX.	613	F/A-9.3
HRK-17	AUX.	623	F/A-9.3
HRK-20	AUX.	603	F/A-9.3
HRK-21	AUX.	638	F/A-9.3
HRK-22	AUX.	585	JF-9
HRK-23	AUX.	603	JF-9
HRK-24	AUX.	623	JF-9
HRK-27	OFFICE	638	BB-10

C-12	AUX.	545	H/GD-11
C-13	AUX.	565	H/GD-11
C-14	AUX.	585	H/GD-11
C-15	AUX.	603	H/GD-11
C-18	AUX.	638	F/A-9.3
C-19	AUX.	585	F/A-9.3
C-21	AUX.	565	JF-9
C-22	AUX.	585	JF-9
C-23	AUX.	603	JF-9
C-24	AUX.	623	JF-9
C-28	AUX.	585	BB-10

HR-53	WAREHOUSE #2	585	SOUTH-EAST CORNER
HR-54	WAREHOUSE #2	597	NORTH-WEST STAIRWELL
HR-55	WAREHOUSE #2	585	WEST END
HR-56	WAREHOUSE #2	585	CENTER OF BLDG.
HR-57	WAREHOUSE #2	585	EAST END

**FIRE PANEL LOCATION**

PANEL NO.	DESCRIPTION	LOCATION
FDS/RRS	FIRE & RADIATION CONSOLE	CONTROL ROOM
C2720	FIRE ALARM PANEL	EL. 565' AUX. BLDG.
C3720	FIRE ALARM PANEL	EL. 585' AUX. BLDG.
C4720	FIRE ALARM PANEL	EL. 603' AUX. BLDG.
C5796A	FIRE ALARM PANEL	EL. 623' CONTROL ROOM
06713	FIRE ALARM PANEL	EL. 643' VESTIBULE TO A/C EQUIP. ROOM
C3080	FIRE ALARM PANEL	EL. 585' INTAKE STRUCTURE
HCS200	FIRE ALARM PANEL	WEST END
C4520	FIRE ALARM PANEL	EL. 603' NORTH HEATER BAY
C5401	FIRE ALARM PANEL	EL. 623' TURBINE DECK
C5796B	FIRE SYSTEM NODE DISPLAY UNIT	EL. 623' CONTROL ROOM



- LEGEND**
- △ HOSE REEL, HOSE RACK OR HOSE CABINET (2 1/2" SUPPLY)
  - HR-HOSE REEL
  - HCS-HOSE RACK
  - HCR-HOSE CABINET (SURFACE MOUNTED)
  - ◻ HCR-HOSE CABINET (RECESSED)
  - C-NO. 2 1/2" F.D. HOSE CONNECTION IN STAIRWAY
  - ⊘ POST INDICATING VALVE
  - ◆ DRY PIPE FUSED HEADS SPRINKLERS MANUAL VALVE
  - ⊕ (V) 1/2" VENT
  - ⊕ (D) 1" DRAIN
  - ⊕ (H) NO. - HOSE HOUSE (NOTE 10)
  - DELUGE VALVE
  - ▲ ALARM CHECK VALVE
  - ⊕ H-NO. - HYDRANT
  - ⊕ C.S.R. - CABLE SPREADING ROOM
  - ⊕ BURIED VALVE W/O OPERATOR

**ELECTRIC FIRE PUMP P5-1**

LOCATION	TE (1)	T (2)
MOTOR BRG. OT OUTBOARD	TE-3983A	T393
MOTOR BRG. OT PUMP END	TE-3983B	T394
MOTOR STATOR	TE-3983C	T392

- NOTES:**
1. OWNER PIPING TO BE ENGINEERED BY BECTHEL AND SUPPLIED UNDER FULL LOAD.
  2. DELETED.
  3. SYSTEM FUNCTIONS SHOWN ARE FOR NORMAL OPERATION.
  4. FOR GENERAL NOTES, PIPING SYMBOLS AND P & ID INDEX SEE DWG. M-001.
  5. FOR INSTRUMENTATION SYMBOLS SEE DWG. M-002.
  6. "F" INDICATES THE LIMIT OF OPERATIONAL PHASE FIRE PROTECTION MODIFICATIONS.
  7. THE ONLY VENT OR DRAIN LINE CAPS REQUIRED TO BE SHOWN ON PIPING AND INSTRUMENTATION DIAGRAMS ARE THOSE CONTROLLED UNDER DB-PP-06705 (FORMERLY AD 838.03). THE ACTUAL TERMINATION OF ALL OTHER VENTS OR DRAINS ARE NOT SHOWN AND INSTEAD, AN OPEN ENDED PIPE IS DISPLAYED.
  8. FP22 IS A 1/2" DRAIN VALVE.
  9. HOSE HOUSES ARE SHOWN ON DRAWING ONLY WHEN INTEGRAL WITH HYDRANTS. ONLY HYDRANT NUMBERS ARE DEPICTED. HOSE HOUSE NUMBER ARE THE SAME AS THE ASSOCIATED HYDRANT, WITH THE EXCEPTION OF THE PREFIX "H" (SEE LEGEND).
  11. WHERE NOTED THE TANK CAPACITY IS NOMINAL. WHERE APPLICABLE, SEE DB-PP-06705 (TANK LEVEL CALIBRATION CURVES) FOR INDICATED LEVEL VS. VOLUME RELATIONSHIP. (REF: PCAOR 96-0976).

**LR NOTES:**

A. FOR GENERAL LICENSES/RENEWAL NOTES REFER TO LR-M016A-1.  
 B. COMPONENTS HIGHLIGHTED GREEN ON THIS DRAWING ARE IN SCOPE FOR (A)3-FIRE PROTECTION. THE MAIN FLOW PATHS REQUIRED TO PERFORM THE (A)3 FUNCTION, AND BRANCH LINES TO AND INCLUDING THE FIRST VALVE, ARE IN SCOPE.  
 C. COMPONENTS THAT ARE NOT HIGHLIGHTED ARE NOT LOCATED IN SAFETY-RELATED AREAS WHERE (A)3-HEAR CONSIDERATIONS ARE A CONCERN, AND ARE THEREFORE NOT IN SCOPE.  
 D. THE SPRINKLER SYSTEM IN THE DIESEL FUEL PUMP ROOM IS WITHIN THE SCOPE OF LICENSE RENEWAL.

**LICENSE RENEWAL BOUNDARY DRAWING**  
**LR-M016A REV. 1**

SYSTEMS SHOWN ON THIS DRAWING:  
 12: FIRE PROTECTION  
 17: DIESELS

**BECTHEL ASSOCIATES**  
**PROFESSIONAL CORPORATION (OHIO)**  
 2141 THESBURG, MARYLAND  
**DAVIS-BESSE NUCLEAR POWER STATION**  
 UNIT NO. 1  
 THE TOLEDO EDISON COMPANY

PIPING & INSTRUMENT DIAGRAM  
**STATION FIRE PROTECTION SYSTEM**

JOB NO.	DRAWING NO.	REV.
12501	M-016A	48

THIS DWG. REV. 0 SUPERSEDES IN PART DWG. M-016 REV. 27. WORK THIS DWG. WITH M-016G.

DATE: 08-10-07 14:34:44 E SIZE

01216