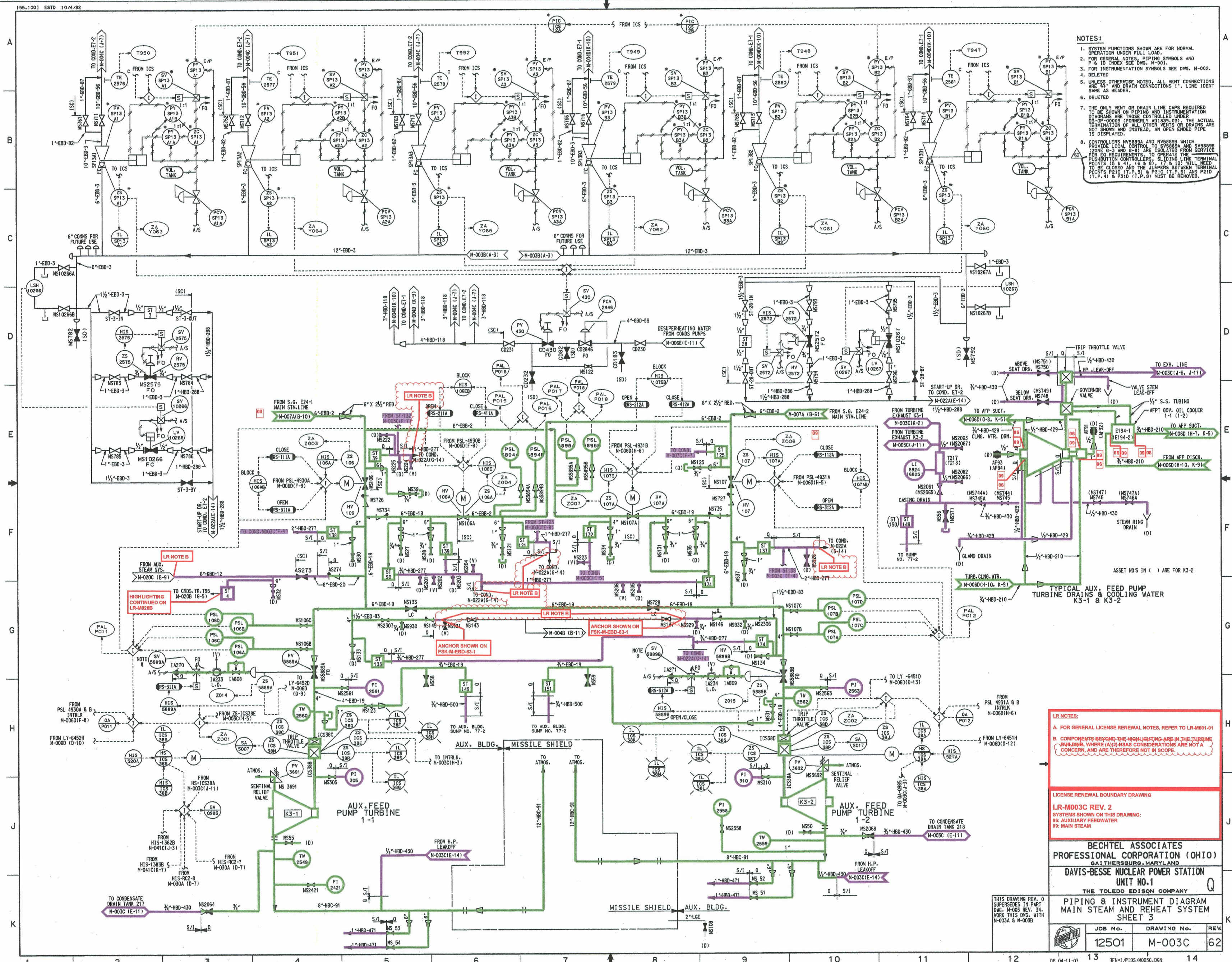


NOTES:

1. SYSTEM FUNCTIONS SHOWN ARE FOR NORMAL OPERATION UNDER FULL LOAD.
2. FOR GENERAL NOTES, PIPING SYMBOLS AND P & I TO INDEX SEE DWG. M-001.
3. FOR INSTRUMENTATION SYMBOLS SEE DWG. M-002.
4. DELETED.
5. UNLESS OTHERWISE NOTED, ALL VENT CONNECTIONS ARE 1/2" AND DRAIN CONNECTIONS 1" LINE IDENT.
6. DELETED.
7. THE ONLY VENT OR DRAIN LINE CAPS REQUIRED TO BE SHOWN ON PIPING AND INSTRUMENTATION DIAGRAMS ARE THOSE CONTROLLED UNDER DE-OP-00009 (FORMERLY AS 153A-02). THE ACTUAL TERMINATION OF ALL OTHER VENTS OR DRAINS ARE NOT SHOWN AND INSTEAD, AN OPEN ENDED PIPE IS DISPLAYED.
8. CONTROLLERS MV8888A AND MV8888B WHICH PROVIDE LOCAL CONTROL TO SV8888A AND SV8888B (ZONE 3-5 AND 0-1) ARE ISOLATED FROM SERVICE FOR EQ REQUIREMENTS. TO OPERATE THE PUMP/SHUTTER CONTROLLER, SLOJING LINK TERMINAL POINTS (S & 4), (S & 8), (T & 12) WILL NEED TO BE REMOVED. WIRING BETWEEN TERMINAL POINTS P21C (T.P. 5) & P31C (T.P. 8) AND P21D (T.P. 4) & P31D (T.P. 8) MUST BE REMOVED.



**LR NOTES:**  
 A. FOR GENERAL LICENSE RENEWAL NOTES, REFER TO LR-M001-01  
 B. COMPONENTS BEYOND THE HIGHLIGHTING ARE IN THE TURBINE BUILDINGS, WHERE (A)2-REAS CONSIDERATIONS ARE NOT A CONCERN AND ARE THEREFORE NOT IN SCOPE

**LICENSE RENEWAL BOUNDARY DRAWING**  
**LR-M003C REV. 2**  
 SYSTEMS SHOWN ON THIS DRAWING:  
 SR: AUXILIARY FEEDWATER  
 PR: MAIN STEAM

**BECHTEL ASSOCIATES**  
**PROFESSIONAL CORPORATION (OHIO)**  
 641 THE BERSBURG, MARYLAND  
**DAVIS-BESSE NUCLEAR POWER STATION**  
 UNIT NO. 1  
 THE TOLEDO EDISON COMPANY  
**PIPING & INSTRUMENT DIAGRAM**  
**MAIN STEAM AND REHEAT SYSTEM**  
**SHEET 3**

JOB No.	DRAWING No.	REV
12501	M-003C	62

012003