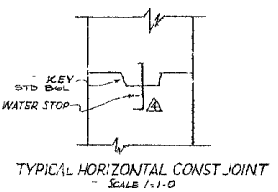
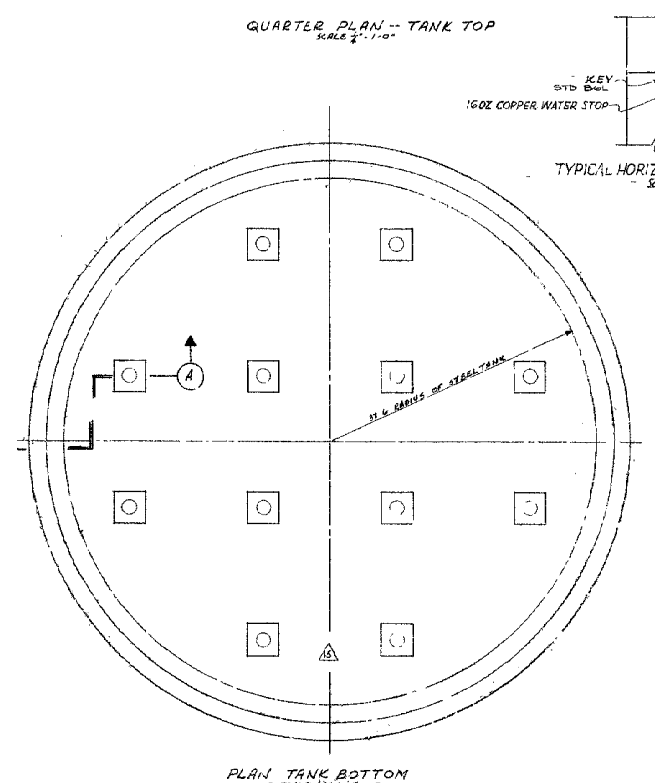
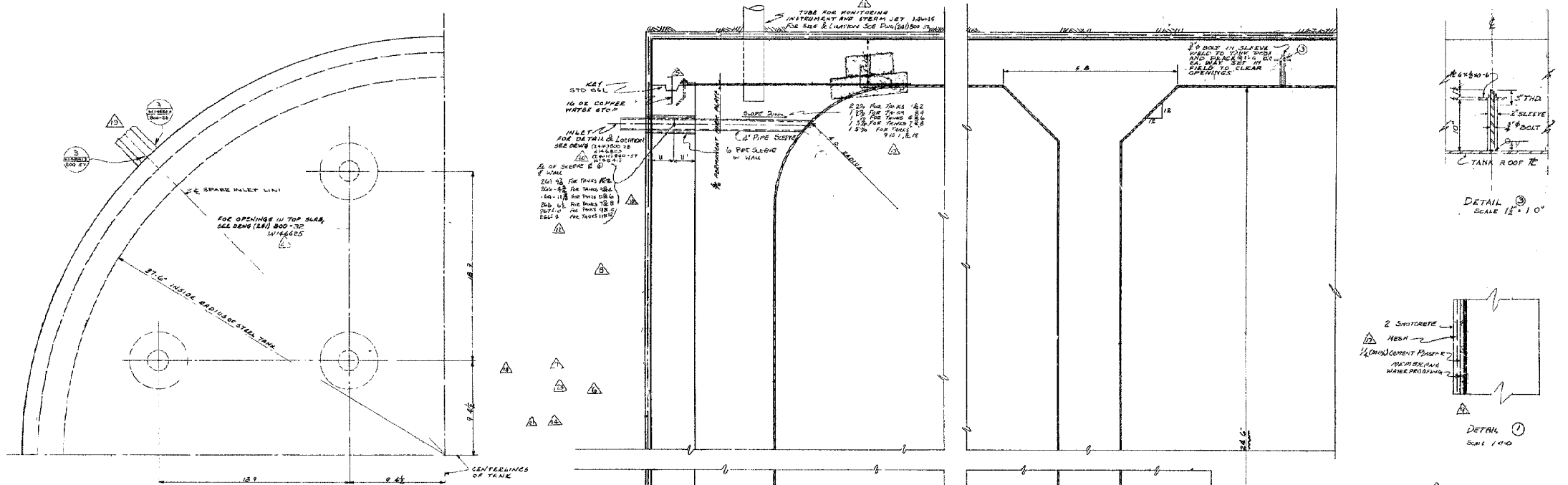


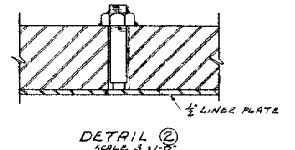
6LES71M

ANALYZE & MARK THIS PRINT FOR ALL SAFETY CONSIDERATIONS IN DESIGN OR CONSTRUCTION



NOTE:  
 1. FIELD DETAIL FOR WATER STOP TO BE 5/8" DIA.  
 2. FOLLOW AISC 308-87/W/187570  
 3. (2) 1/2" DIA. 304 STAINLESS STEEL  
 4. (2) 1/2" DIA. 304 STAINLESS STEEL  
 5. (2) 1/2" DIA. 304 STAINLESS STEEL

NOTES:  
 1. TANK SPECIFICATIONS NO. 3304.  
 2. CONCRETE TO DEVELOP 2500 PSI COMPRESSIVE STRENGTH IN 28 DAYS.  
 3. AREA BETWEEN STEEL TANK AND STEEL PAN TO BE MONITORED.  
 4. DESIGN LIVE LOADS:  
 a. EXTERNAL - 3'-0" EARTH COVER  
 b. INTERNAL - FLUID CONTENTS  
 5. BOTTOM SLAB TO BE 4" MIN. THICK FOUR.  
 6. SIDE WALLS TO HAVE NO VERTICAL CONSTRUCTION JOINTS. USE ORIENTAL CONSTRUCTION JOINTS IN SIDE WALLS IF NECESSARY.  
 7. COPPER WATER STOP TO BE CONTINUOUS SEAM TO BE BRIDGED WATER TIGHT TO PREVENT TANK FLOODING. GROUND WATER NOT PERMITTED TO RISE TO A LEVEL OF 6"-0" BELOW CONCRETE.  
 8. TANK MUST BE EARTH FILL ON TANK BUT AFTER CONCRETE ENCLOSURE ON ROOF OF TANK ARE IN PLACE.  
 9. GROUND WATER MUST NOT BE PERMITTED TO RISE ABOVE THE LINE ON THE TOP OF THE CONCRETE AND UNTIL AT LEAST 6"-0" FILL HAS BEEN PLACED ON TOP OF TANK.



THIS IS A SCANNED CAD PLOT.  
 REVISION REQUIRES PROPER PLOTTER/VECTOR SOFTWARE.  
 CONTACT E & P DESIGN ENGINEERING CAD OPERATIONS GROUP FOR FURTHER INFORMATION.  
 DO NOT REVISE THIS PLOTTED COPY.

UNCLASSIFIED  
 DOES NOT CONTAIN  
 UNCLASSIFIED CONTROLLED  
 NUCLEAR INFORMATION

Reviewing Official: SIGNATURE BY MICROFILM  
 (Name and Title)

Date: 08/15/95

C I S H 8358 29

PROJ.	REV. NO.	DATE	REVISION	FRPD	LEAD ENG	CHK'D	APPROV'D	APPROV'D	PROJ. MGR.	REV. NO.	DATE	REVISION	FRPD	LEAD ENG	CHK'D	APPROV'D	APPROV'D	PROJ. MGR.	REV. NO.	DATE	REVISION	FRPD	LEAD ENG	CHK'D	APPROV'D	APPROV'D	PROJ. MGR.

REFERENCE DRAWINGS

41-5205	DESIGN OF CONCRETE TANK	REV. NO.	DATE
41-5279	25'-0" DIA. STEEL TANK DETAILS	REV. NO.	DATE
41-5280	REINFORCEMENT	REV. NO.	DATE
41-5282	STEEL PAN PLATE DETAILS	REV. NO.	DATE

REFERENCE STANDARDS

UNITED STATES DEPARTMENT OF ENERGY  
 SAVANNAH RIVER SITE

SAVANNAH RIVER PLANT  
 200 AREA  
 TYPE I TANKS 1-8 AND 9-12  
 WASTE STORAGE TANKS (241-H)  
 GENERAL ARRANGEMENT & CONSTRUCTION DETAILS  
 CONCRETE AND STEEL  
 (U)

SCALE: NONE  
 SHEET NO.: W145573  
 SHEET 1 OF 1  
 LATEST REVISION: 29