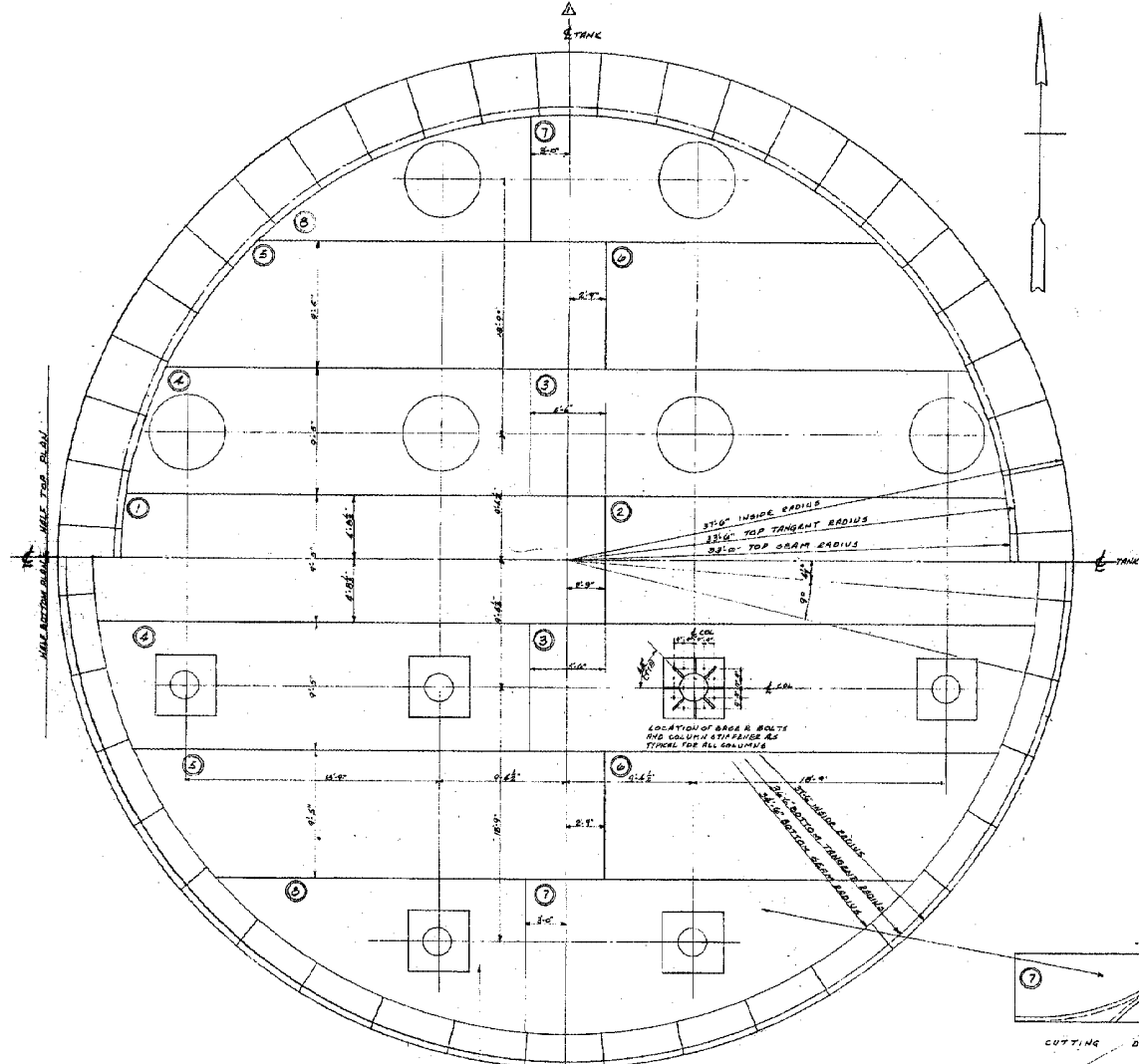


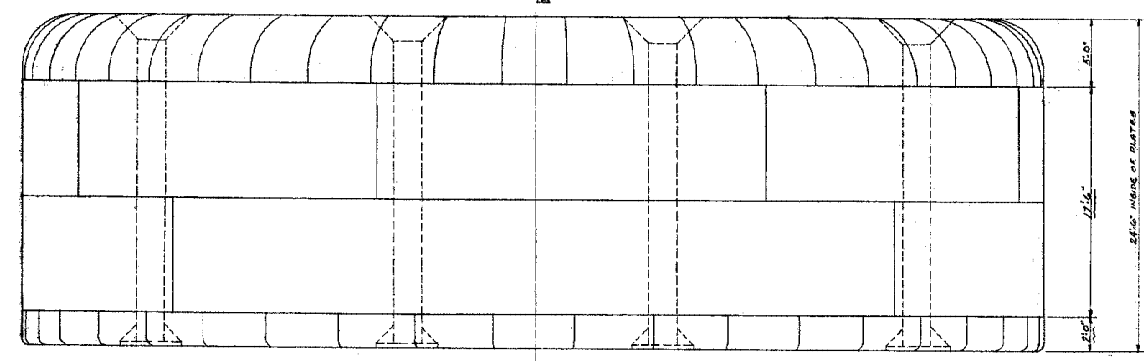
1 2 3 4 5 6 7 8 9 10 11 12 13 14 15 16 17 18 19 20

A  
B  
C  
D  
E  
F  
G  
H  
I  
J  
K  
L  
M  
N  
O  
P  
Q  
R  
S  
T  
U  
V  
W  
X  
Y

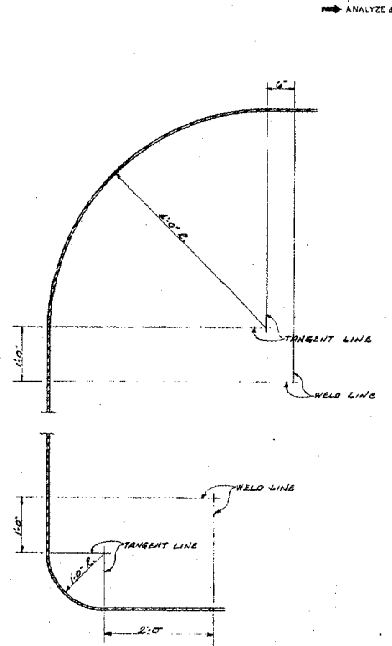
W145378  
IN INVENT



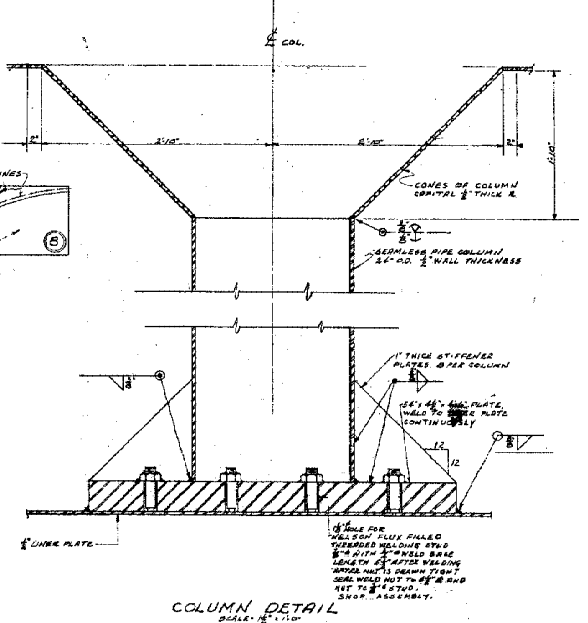
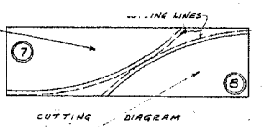
PLAN - HALF TOP PLATES  
HALF BOTTOM PLATES  
SCALE: 1/4" = 1'-0"



ELEVATION  
SCALE: 1/4" = 1'-0"



TOP AND BOTTOM KNUCKLE & DETAIL  
SCALE: 1/4" = 1'-0"



COLUMN DETAIL  
SCALE: 1/4" = 1'-0"

PLATE SCHEDULE FOR ONE TANK			
PLATE NO.	NO. REQ.	SIZE	REMARKS
1	2	1/4" X 12' X 12'	
2	2	1/4" X 12' X 12'	
3	2	1/4" X 12' X 12'	
4	2	1/4" X 12' X 12'	
5	2	1/4" X 12' X 12'	
6	2	1/4" X 12' X 12'	
7	2	1/4" X 12' X 12'	
8	2	1/4" X 12' X 12'	
9	2	1/4" X 12' X 12'	
10	2	1/4" X 12' X 12'	
11	2	1/4" X 12' X 12'	
12	2	1/4" X 12' X 12'	
13	2	1/4" X 12' X 12'	
14	2	1/4" X 12' X 12'	
15	2	1/4" X 12' X 12'	
16	2	1/4" X 12' X 12'	
17	2	1/4" X 12' X 12'	
18	2	1/4" X 12' X 12'	
19	2	1/4" X 12' X 12'	
20	2	1/4" X 12' X 12'	

NOTE: ALL DIMS SHOULD BE DECIMAL DIMS UNLESS OTHERWISE SPECIFIED.

GENERAL NOTES:  
 1. FOR STEEL SPECIFICATIONS, SEE SPECIFICATION 'S-200'.  
 2. ALL DIMS IN BOTTOM AND TOP PLATES SHALL BE FULL PENETRATION BUTT WELDED UNLESS OTHERWISE SPECIFIED.  
 3. ALL DIMS IN SHELL SHALL BE FULL PENETRATION BUTT WELDED UNLESS OTHERWISE SPECIFIED.  
 4. ALL DIMS IN SHELL SHALL BE FULL PENETRATION BUTT WELDED UNLESS OTHERWISE SPECIFIED.  
 5. ALL DIMS IN SHELL SHALL BE FULL PENETRATION BUTT WELDED UNLESS OTHERWISE SPECIFIED.  
 6. ALL DIMS IN SHELL SHALL BE FULL PENETRATION BUTT WELDED UNLESS OTHERWISE SPECIFIED.  
 7. ALL DIMS IN SHELL SHALL BE FULL PENETRATION BUTT WELDED UNLESS OTHERWISE SPECIFIED.  
 8. ALL DIMS IN SHELL SHALL BE FULL PENETRATION BUTT WELDED UNLESS OTHERWISE SPECIFIED.  
 9. ALL DIMS IN SHELL SHALL BE FULL PENETRATION BUTT WELDED UNLESS OTHERWISE SPECIFIED.  
 10. ALL DIMS IN SHELL SHALL BE FULL PENETRATION BUTT WELDED UNLESS OTHERWISE SPECIFIED.

12 TANKS REQUIRED

UNCLASSIFIED  
 DOES NOT CONTAIN  
 UNCLASSIFIED CONTROLLED  
 NUCLEAR INFORMATION  
 Reviewing Official: SIGNATURE ON MICROFILM  
 Date: 08/15/91

C | C | S | H | 8 | 3 | 5 | 7 | SHEET 4

PROJ.	REV. NO.	DATE	REVISION	PROJ.	REV. NO.	DATE	REVISION	PROJ.	REV. NO.	DATE	REVISION	PROJ.	REV. NO.	DATE	REVISION

UNITED STATES DEPARTMENT OF ENERGY  
 SAVANNAH RIVER SITE  
 SAVANNAH RIVER PLANT  
 200 AREA  
 TYPE I TANKS 1-B AND 9-12  
 WASTE STORAGE TANKS 241 F 8 H  
 75'-0" DIA. STEEL TANK DETAILS  
 (U)

W145378  
 SHEET 1 OF 1  
 LATEST REVISION 4