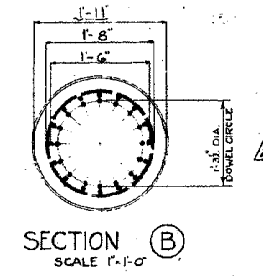
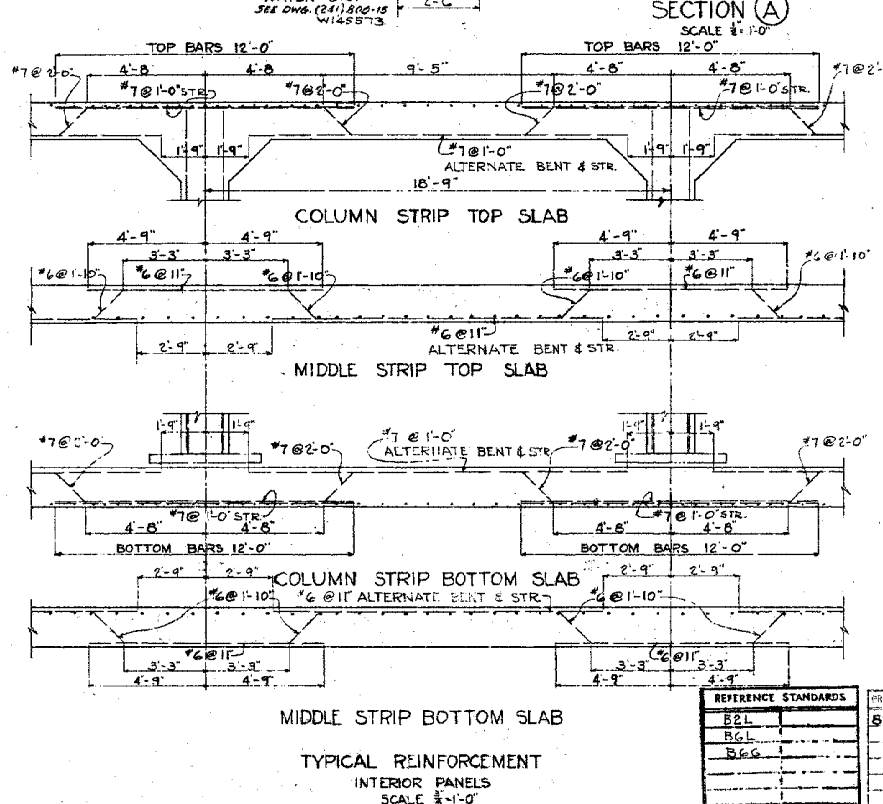


CONCRETE NOTES:
GENERAL NOTES - SEE DWG. NO. W145573 (241) 800-15
SPECIFICATION - DU PONT 3019 SECTION B A
STRENGTH - 2500 P.S.I. @ 28 DAYS
REINFORCING - HIGH BOND BARS.
HORIZONTAL LAP SPLICES 25 BAR DIAMETERS - VERTICAL LAP SPLICES 21 BAR DIAMETERS UNLESS OTHERWISE NOTED
SOIL BEARING - REFER TO NOTES ON DWG. (241) 800-17 W145541
BACKFILL - SPECIFICATION - DU PONT 3019 SECTION C E
CONCRETE FINISH - FLOOR OF ALL ENCASEMENTS, AS SHOWN ON ENCASEMENT DRAWINGS, TO HAVE CLASS 1 FINISH.

NOTE:
S1-7 BARS SPACED AND BENT SAME AS BARS TYPICAL EXTERIOR MIDDLE STRIP.
S2-8 BARS SPACED AND BENT SAME AS BARS TYPICAL EXTERIOR COLUMN STRIP.
- INDICATES DIRECTION OF SPAN.



UNCLASSIFIED
DOES NOT CONTAIN
UNCLASSIFIED CONTROLLED
NUCLEAR INFORMATION
ADC: [Signature] Date: 8/1/93
C. [Signature] Date: 8/1/93

THIS DOCUMENT CONTAINS INFORMATION
RELATIVE TO A STATUTE OF THE STATE OF
GEORGIA. CONSTRUCTION MAY BE IMPROVED
OR CHANGED WITHOUT FURTHER APPROVAL.

W145225

CHEMICAL PLANTS DIVISION
OF BLANCKNEY CONSTRUCTION CO., PITTSBURGH, PA.

DATE: 7-21-93
BKC-3555 (241) 800-5

SAVANNAH RIVER PLANT
200 AREA
WASTE STORAGE TANKS - 241 F+H
DESIGN OF CONCRETE TANK
CONCRETE

REFERENCE STANDARDS	REVISIONS
B2L	ADDED WELD ALL AROUND SEC (A)
BCL	ADDED DOWELS IN DEC (B)
BGG	ADDED NOTE
	ADDED TWO 10 NUMBERS

INVENTORIED BY: [Signature]
DATE: 7-21-93

W145225