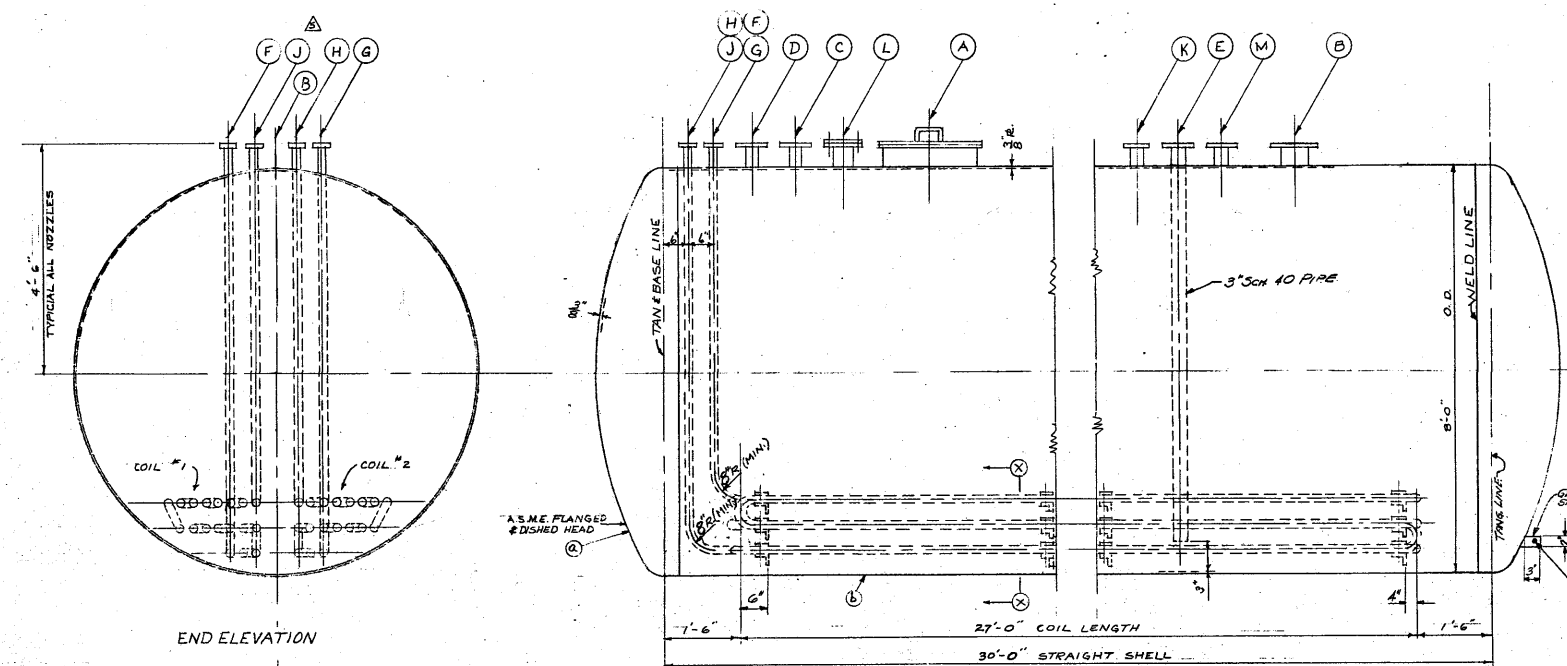


ANALYZE & MARK THIS PRINT FOR ALL SAFETY CONSIDERATIONS IN DESIGN OR CONSTRUCTION



MARK	NO.	DESCRIPTION	REMARKS	INST.
A	1	22" MANWAY	SEE DETAIL ①	
B	1	6" NOZZLE	LEVEL INDICATOR (SEE DET ①)	
C	1	3" NOZZLE	INLET	
D	1	4" NOZZLE	INLET	
E	1	3" NOZZLE	OUTLET	
F	1	1" NOZZLE	INLET-COIL #1	
G	1	1" NOZZLE	INLET-COIL #2	
H	1	1" NOZZLE	OUTLET-COIL #1	
J	1	1" NOZZLE	OUTLET-COIL #2	
K	1	2" NOZZLE	TEMP. INDICATOR	
L	1	4" NOZZLE	SPARE (BOLTS NUTS & GASKETS)	
M	1	3" NOZZLE	INLET	

NOZZLE FLANGE DIMENSIONS TO CONFORM 150 LB. STANDARD FLAT FACE WITH THICKNESS AS SHOWN. BOLT HOLES SHALL STRADDLE CENTERLINES PARALLEL TO TANGENTIAL VESSEL CENTERLINES

GENERAL NOTES:  
 CONSTRUCTION - FUSION WELDED PAR-U-69 AND DUPONT FABRICATION & INSPECTION PROCEDURE NO. 1002.  
 CODE - A.S.M.E. BOILER CONSTRUCTION CODE (1949 EDITION) SEC. VIII MODIFIED AS FOLLOWS:  
 1. NO INSPECTION BY A.S.M.E. OR OTHER CODE AGENCY IS REQUIRED.  
 2. WELDING TO CONFORM TO RULES PRESCRIBED BY PAR-U-69 AND SEC. IX OF A.S.M.E. BOILER CONSTRUCTION CODE.  
 3. ALL WORKMANSHIP AND MATERIAL TO CONFORM TO A.S.M.E. VESSEL CODE UNLESS NOTED OR DETAILED TO THE CONTRARY.

DESIGN CONDITIONS-VESSEL - ATMOSPHERIC PRESSURE @ 150°F / COIL - 100 PSIG @ 150°F

MATERIALS OF CONSTRUCTION  
 ALL MATERIAL TO BE IN ACCORDANCE WITH DUPONT SPEC. B20M GR B20-0 UNLESS OTHERWISE NOTED.  
 BOLTS, AISI TYPE 304 WITH AISI TYPE 416 NUTS.  
 GASKETS - TYPE G-209 PER DUPONT SPECIFICATION 3024. (FURNISHED BY VESSEL FABRICATOR.)

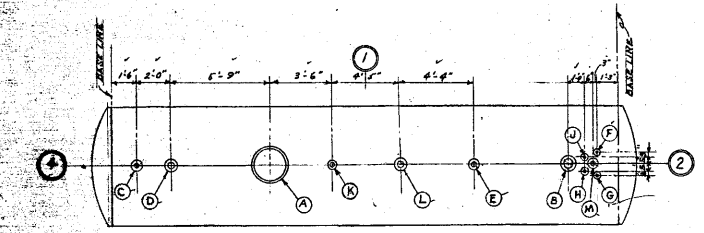
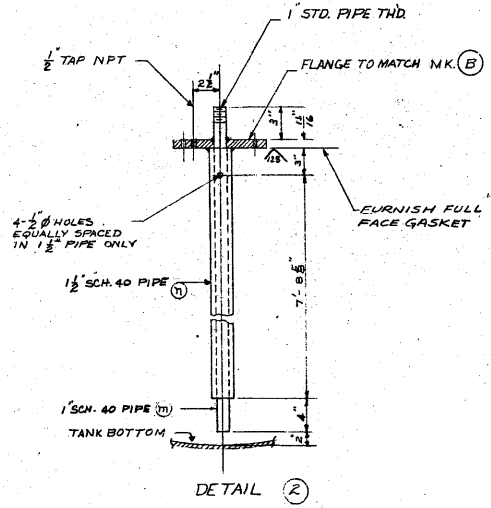
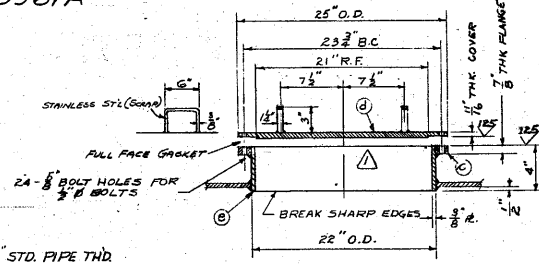
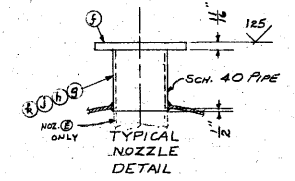
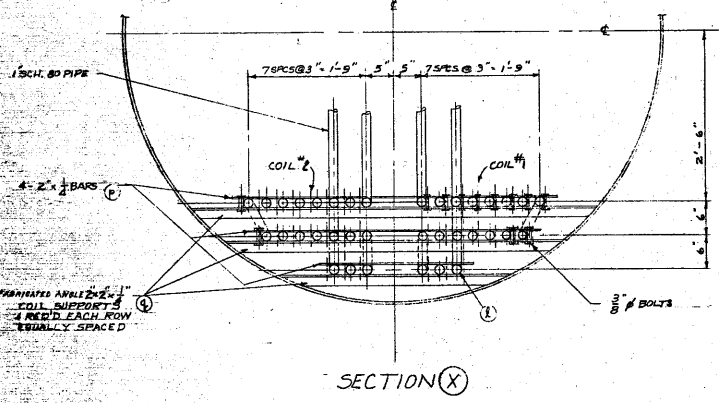
TOLERANCES - IN ACCORDANCE WITH DUPONT FABRICATION & INSPECTION PROCEDURE NO. 1002.  
 TESTING - VESSEL - 50 PSIG HYDRO. / COIL - 150 PSIG HYDRO. INSPECTION - PER DUPONT FABRICATION & INSPECTION PROCEDURE NO. 1002.

ORIENTATION - FOR TRUE LOCATION OF ALL CONNECTIONS SEE ORIENTATION PLAN.  
 ESTIMATED CAPACITY - 11,700 GALLONS  
 ESTIMATED WEIGHT - EMPTY 12,720 LBS / FULL OF WATER 128,180 LBS.

CORROSION ALLOWANCE - 1/8"  
 LOCATION OF SEAMS - LONGITUDINAL SEAMS SHALL BE LOCATED IN TOP 120° SECTION OF TANK.

WELD ROD NOTE - ALL STAINLESS STEEL TO BE WELDED WITH ROD TO A.W.S. SPECIFICATION A.S. 4-15T, UNCOATED TYPE E-308-16 WITH MAX. CARBON CONTENT OF 0.03% MAY BE SUBSTITUTED, PROVIDING VESSEL FABRICATOR HAS DEMONSTRATED ABILITY TO PRODUCE WELDS WITH A CARBON CONTENT NOT IN EXCESS OF 0.04%.

LOWER CASE LETTERS CORRESPOND TO PARTS LISTED ON MATERIAL REQUISITION NO. 241-352.78-R-2



NO.	DESCRIPTION	DATE
1	DELETED MK ①	
2	ORIENTATION ADDED	
3	MK ① WAS 3" INLET	
4	RELOCATED MARKS	
5	NEW DETAIL ①	
6	NEW DETAIL ②	
7	NEW DETAIL ③	
8	NEW DETAIL ④	
9	NEW DETAIL ⑤	
10	NEW DETAIL ⑥	
11	NEW DETAIL ⑦	
12	NEW DETAIL ⑧	
13	NEW DETAIL ⑨	
14	NEW DETAIL ⑩	
15	NEW DETAIL ⑪	
16	NEW DETAIL ⑫	
17	NEW DETAIL ⑬	
18	NEW DETAIL ⑭	
19	NEW DETAIL ⑮	
20	NEW DETAIL ⑯	
21	NEW DETAIL ⑰	
22	NEW DETAIL ⑱	
23	NEW DETAIL ⑲	
24	NEW DETAIL ㉑	
25	NEW DETAIL ㉒	
26	NEW DETAIL ㉓	
27	NEW DETAIL ㉔	
28	NEW DETAIL ㉕	
29	NEW DETAIL ㉖	
30	NEW DETAIL ㉗	
31	NEW DETAIL ㉘	
32	NEW DETAIL ㉙	
33	NEW DETAIL ㉚	
34	NEW DETAIL ㉛	
35	NEW DETAIL ㉜	
36	NEW DETAIL ㉝	
37	NEW DETAIL ㉞	
38	NEW DETAIL ㉟	
39	NEW DETAIL ㊱	
40	NEW DETAIL ㊲	
41	NEW DETAIL ㊳	
42	NEW DETAIL ㊴	
43	NEW DETAIL ㊵	
44	NEW DETAIL ㊶	
45	NEW DETAIL ㊷	
46	NEW DETAIL ㊸	
47	NEW DETAIL ㊹	
48	NEW DETAIL ㊺	
49	NEW DETAIL ㊻	
50	NEW DETAIL ㊼	
51	NEW DETAIL ㊽	
52	NEW DETAIL ㊾	
53	NEW DETAIL ㊿	
54	NEW DETAIL ①	
55	NEW DETAIL ②	
56	NEW DETAIL ③	
57	NEW DETAIL ④	
58	NEW DETAIL ⑤	
59	NEW DETAIL ⑥	
60	NEW DETAIL ⑦	
61	NEW DETAIL ⑧	
62	NEW DETAIL ⑨	
63	NEW DETAIL ⑩	
64	NEW DETAIL ⑪	
65	NEW DETAIL ⑫	
66	NEW DETAIL ⑬	
67	NEW DETAIL ⑭	
68	NEW DETAIL ⑮	
69	NEW DETAIL ⑯	
70	NEW DETAIL ⑰	
71	NEW DETAIL ⑱	
72	NEW DETAIL ⑲	
73	NEW DETAIL ㉑	
74	NEW DETAIL ㉒	
75	NEW DETAIL ㉓	
76	NEW DETAIL ㉔	
77	NEW DETAIL ㉕	
78	NEW DETAIL ㉖	
79	NEW DETAIL ㉗	
80	NEW DETAIL ㉘	
81	NEW DETAIL ㉙	
82	NEW DETAIL ㉚	
83	NEW DETAIL ㉛	
84	NEW DETAIL ㉜	
85	NEW DETAIL ㉝	
86	NEW DETAIL ㉞	
87	NEW DETAIL ㉟	
88	NEW DETAIL ㊱	
89	NEW DETAIL ㊲	
90	NEW DETAIL ㊳	
91	NEW DETAIL ㊴	
92	NEW DETAIL ㊵	
93	NEW DETAIL ㊶	
94	NEW DETAIL ㊷	
95	NEW DETAIL ㊸	
96	NEW DETAIL ㊹	
97	NEW DETAIL ㊺	
98	NEW DETAIL ㊻	
99	NEW DETAIL ㊼	
100	NEW DETAIL ㊽	

CHEMICAL PLANTS DIVISION		OF BLAW-KNOX CO., PITTSBURGH, PA.	
CONTRACT NO.	BKC-3555	DR. DRAWING NO.	241-352.78-1
APPROVED BY	R.S.E. 9-17-51	DATE	9-17-51
APPROVED BY	M.P. 9-18-51	DATE	9-18-51
APPROVED BY	W.D.C. 9-18-51	DATE	9-18-51
APPROVED BY	N.A.M. 9-20-51	DATE	9-20-51
APPROVED BY	V.W.B. 9-21-51	DATE	9-21-51
APPROVED BY	W.F.D. 9-21-51	DATE	9-21-51
BUILDINGS 241 F/H		E.P.N. 241H-352.78	
		E.P.N. 241F-352.78	
CATCH TANK			

UNCLASSIFIED  
 DOES NOT CONTAIN  
 UNCLASSIFIED CONTROLLED  
 NUCLEAR INFORMATION  
 DATE 8/19/92  
 BY R.M. GAYNE

NO.	DESCRIPTION
SW B20M	
SPEC. 3024	

TOLERANCES  
 ON ALL DIMENSIONS  
 UNLESS OTHERWISE SPECIFIED  
 EXCEPT AS NOTED  
 TO BE  
 FRACTIONAL

PH. NO. 4980  
 SCALE  
 DRAWN BY S.R. FICL  
 CHECKED BY R.M. GAYNE  
 APPROVED BY W.D.C.  
 WORKED BY W.F.D.

W12961