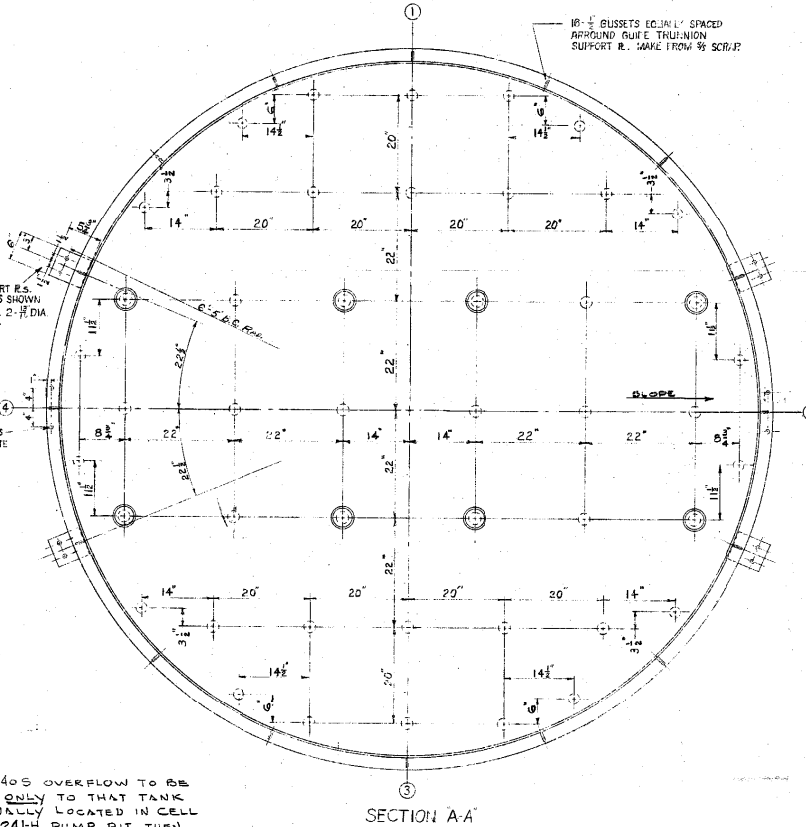
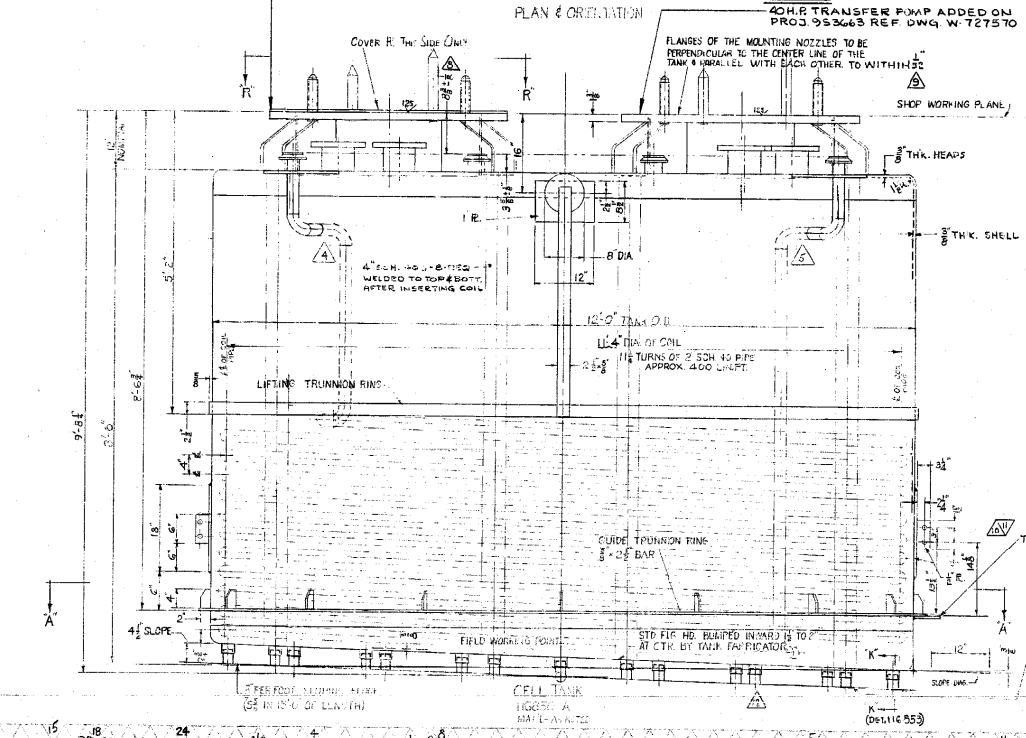


NOTE
 3" SCH 40S OVERFLOW TO BE ADDED ONLY TO THAT TANK ORIGINALLY LOCATED IN CELL N^o 2-241H PUMP PIT THEN TRANSFERRED TO 641F PUMP PIT ON PROJ. 981213

NOTE
 25 H.P. CIRCULATING PUMP ADDED ON PROJ. 953663 REF. DWG. W727570

NOTE
 40 H.P. TRANSFER PUMP ADDED ON PROJ. 953663 REF. DWG. W727570



GENERAL NOTES:
 TANKS - FUSION WELDED PER UG-93 ASME 1969 CODE SEC. VIII AND UG-93.1. ALL WELDS TO BE FULL PENETRATING EXCEPT AS NOTED.
 HEAT TREATING - NONE.
 NO RADIO ACTIVE MATERIALS TO BE USED.
 COILS - TO BE INSPECTED IN ACCORDANCE WITH INSPECTION PROCEDURES UG-64.1. ALL WELDS INSPECTED TO EQUAL QUALITY AS THE MOUNTING NOZZLES AND ROOT WELDS.
 COILS - 3" SCH 40S GRADE F SEAMLESS PIPE (OR WELDED PIPE 100% X-RAYED).
 COILS - TO BE TESTED TO 1.5X HYDROSTATIC PRESSURE.
 WELD WARE NOTE - TANKS TO BE WELDED TO ASME SPEC. 4-5.4.4.8. ALL COILS TO BE WELDED TO ASME SPEC. 4-5.4.4.8. ALL WELDS TO BE FULL PENETRATING.
 WATER TEST - ALL COILS TO BE TESTED TO 1.5X HYDROSTATIC PRESSURE.
 DESIGN PRESSURE - TANK - ATMO. AT 150°F. COIL - 150 PSI AT 100°F.
 OPERATING PRESSURE - TANK - ATMO. AT 150°F. COIL - 25 PSI AT 100°F.
 WEIGHT EMPTY - 13,500 LBS. APPROX.
 WEIGHT FULL OPERATOR - 13,500 LBS. APPROX.
 CAPACITY - 13,500 GALLONS.
 DETAIL D-127613-B, D-127613-C, D-127574-A, D-127574-C WILL BE PROVIDED & FURNISHED BY SUPPLIER.

1. PREPARED DRAWING
 2. CHECKED BY
 3. APPROVED BY
 4. DATE
 5. PROJECT NO.
 6. WELDING SYMBOLS
 7. DATE ADDED
 8. WELDING SYMBOLS
 9. DATE ADDED
 10. WELDING SYMBOLS
 11. DATE ADDED
 12. WELDING SYMBOLS
 13. DATE ADDED
 14. WELDING SYMBOLS
 15. DATE ADDED
 16. WELDING SYMBOLS
 17. DATE ADDED
 18. WELDING SYMBOLS
 19. DATE ADDED
 20. WELDING SYMBOLS
 21. DATE ADDED
 22. WELDING SYMBOLS
 23. DATE ADDED
 24. WELDING SYMBOLS
 25. DATE ADDED

HOLD FOR CONSTRUCTION
 PENDING PROJECT AUTHORIZATION
 FOR PROJ. 953663 INCLUDING REV'S
 10/20, 21, 23

THIS DOCUMENT CONTAINS INFORMATION RELATING TO ACTIVITY OF THE ATOMIC ENERGY COMMISSION. IT IS TO BE REPRODUCED OR RELEASED WITHOUT PRIOR APPROVAL.

DETAIL 116850

CHEMICAL PLANTS DIVISION
 OF BUREAU OF CHEMISTRY, U.S. DEPARTMENT OF COMMERCE

CONTROL NO. BKC-3555
 DRAWING NO. 24

ENGINEERING DOC. CONTROL - 915
 0004600

INVENTORIED BY
 DATE 5/13/54

PUMP TANK
 12'-0" DIA. x 8'-6"
 952081 953663 981213
 11/13/54
 M. J. JOHNSON

THIS DWG. TO BE WORKED WITH DET. 116853