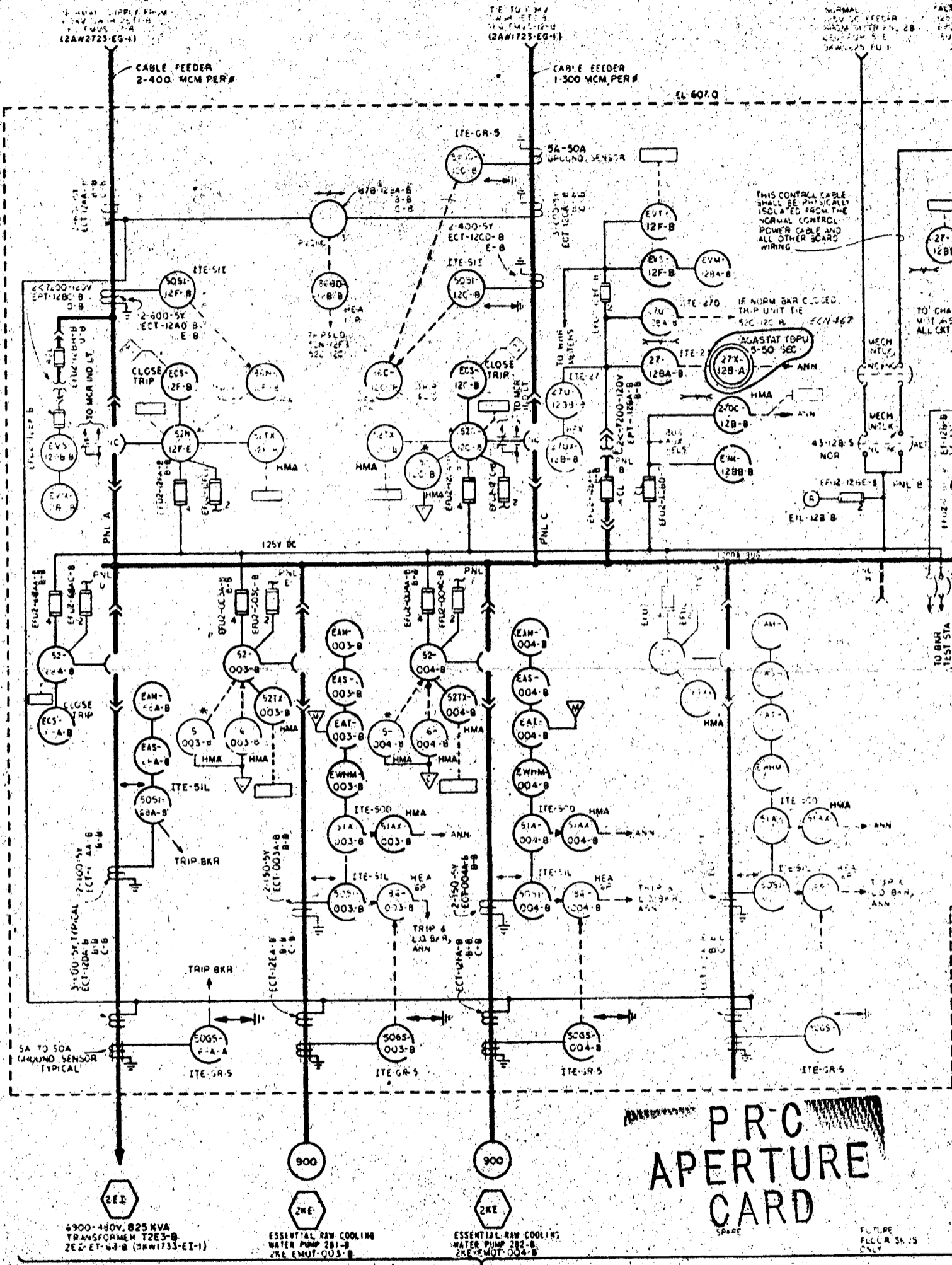
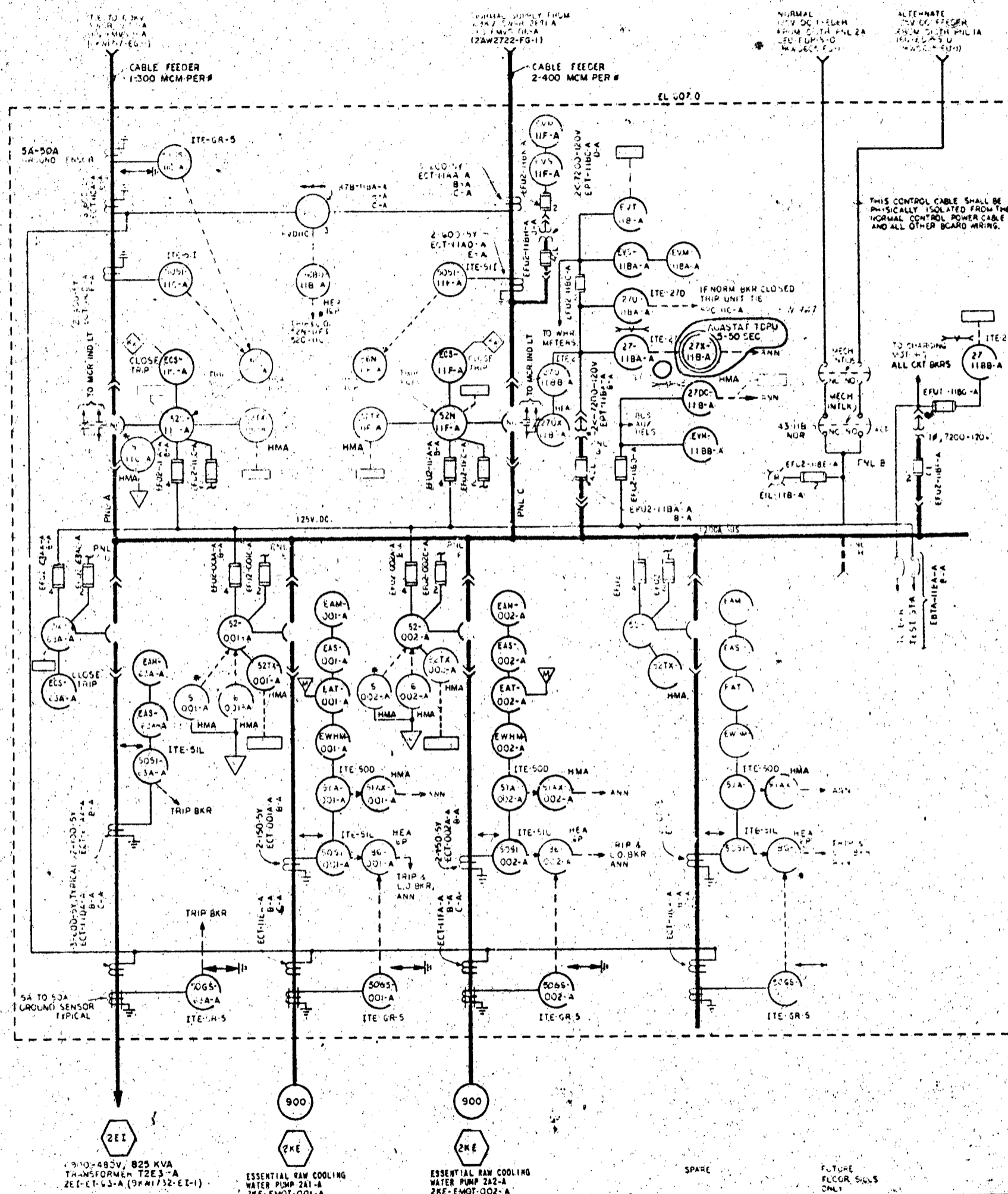


UNIT DESIGNATIONS FOR COMPONENTS REFERRED TO IN THIS SWGR

ECT-11AA A THRU C A
ECT-11CA A THRU C A
ECT-11DA A THRU C A
ECT-11EA A THRU C A
ECT-11FA A THRU C A
ECT-11GA A THRU C A
ECT-11HA A THRU C A
ECT-11IA A THRU C A
ECT-11JA A THRU C A
ECT-11KA A THRU C A
ECT-11LA A THRU C A
ECT-11MA A THRU C A
ECT-11NA A THRU C A
ECT-11OA A THRU C A
ECT-11PA A THRU C A
ECT-11QA A THRU C A
ECT-11RA A THRU C A
ECT-11SA A THRU C A
ECT-11TA A THRU C A
ECT-11UA A THRU C A
ECT-11VA A THRU C A
ECT-11WA A THRU C A
ECT-11XA A THRU C A
ECT-11YA A THRU C A
ECT-11ZA A THRU C A

UNIT DESIGNATIONS FOR COMPONENTS REFERRED TO IN THIS SWGR

ECT-11AA A THRU C B
ECT-11CA A THRU C B
ECT-11DA A THRU C B
ECT-11EA A THRU C B
ECT-11FA A THRU C B
ECT-11GA A THRU C B
ECT-11HA A THRU C B
ECT-11IA A THRU C B
ECT-11JA A THRU C B
ECT-11KA A THRU C B
ECT-11LA A THRU C B
ECT-11MA A THRU C B
ECT-11NA A THRU C B
ECT-11OA A THRU C B
ECT-11PA A THRU C B
ECT-11QA A THRU C B
ECT-11RA A THRU C B
ECT-11SA A THRU C B
ECT-11TA A THRU C B
ECT-11UA A THRU C B
ECT-11VA A THRU C B
ECT-11WA A THRU C B
ECT-11XA A THRU C B
ECT-11YA A THRU C B
ECT-11ZA A THRU C B



PRC APERTURE CARD

| NO. | DESCRIPTION | DATE |
|-----|---|----------|
| 1 | ISSUED FOR CONSTRUCTION | 11/27/67 |
| 2 | REVISED FOR 2EG-EMVS-11-A AND 2EG-EMVS-12-B | 12/15/67 |
| 3 | REVISED FOR 2EG-EMVS-11-A AND 2EG-EMVS-12-B | 1/15/68 |
| 4 | REVISED FOR 2EG-EMVS-11-A AND 2EG-EMVS-12-B | 2/15/68 |
| 5 | REVISED FOR 2EG-EMVS-11-A AND 2EG-EMVS-12-B | 3/15/68 |
| 6 | REVISED FOR 2EG-EMVS-11-A AND 2EG-EMVS-12-B | 4/15/68 |
| 7 | REVISED FOR 2EG-EMVS-11-A AND 2EG-EMVS-12-B | 5/15/68 |
| 8 | REVISED FOR 2EG-EMVS-11-A AND 2EG-EMVS-12-B | 6/15/68 |
| 9 | REVISED FOR 2EG-EMVS-11-A AND 2EG-EMVS-12-B | 7/15/68 |
| 10 | REVISED FOR 2EG-EMVS-11-A AND 2EG-EMVS-12-B | 8/15/68 |
| 11 | REVISED FOR 2EG-EMVS-11-A AND 2EG-EMVS-12-B | 9/15/68 |
| 12 | REVISED FOR 2EG-EMVS-11-A AND 2EG-EMVS-12-B | 10/15/68 |

SWITCHGEAR MANUFACTURER: I-T-E IMPERIAL CORPORATION
CONTRACT NUMBER: 75.KS-95593

- SYMBOLS
- AUX RELAY AND DESPIKING NETWORK IS USED FOR INTERFACE WITH 55CS RELAY COIL IS 125V DC
 - UNIT # SYSTEM DESIGNATION
 - INTERFACE WITH REMOTE CONT. SYS.
 - REMOTE METER CONNECTION
 - INTERFACE WITH STATUS ENVIRONMENTAL ALARM MONITORING SYS. (SEAMS)
 - THIS FUNCTION TO BE MONITORED BY ONE OR MORE ANNUNCIATION OR ALARM SYSTEMS
 - RED INDICATING LIGHT
 - KEY INTERLOCK

- NOTES
- ALL BREAKERS ARE 1200A CONTINUOUS, 5000MVA INTERRUPTING, 7200V NOMINAL, 90000 AMPERE MOMENTARY, 77000 AMPERE CLOSE AND LATCH, THE SWITCH CLEAR HAIN BUS RATING IS 12000 AMPERE CONTINUOUS, 50000 AMPERE MOMENTARY, 7200V NOMINAL.
 - EACH DEVICE ASSOCIATED WITH THE SWITCHGEAR BUS AND THE NORMAL & THE CIRCUIT BREAKERS IS PART OF THE 6.9KV CLASS I.E. AC AUXILIARY POWER DISTRIBUTION SYSTEM WITH UNIT AND SYS DESIGNATION 2EG. THE DEVICE UNIT IS FORMED BY PREFIXING THE DESIGNATIONS SHOWN ON THE DWG WITH 2EG EXCEPT AS NOTED. ALL OTHER BUSES WITH THEIR ASSOCIATED DEVICES ARE PART OF THE SYS WHICH THEY SUPPLY. THE UNIT IS FORMED BY PREFIXING THE DESIGNATIONS SHOWN IN THE HEXAGON SYMBOL AS NOTED. THE SWGR PNL NO AND DESIGNATIONS ARE FORMED AS FOLLOWS USING THE PNL NO (A), AND THE TRAM DESIGNATION (I) A OR B: 2EG-EMVS-11A/12A.
 - THE UNIT CODE FOR ALL DIFFERENTIAL CT'S IS FORMED BY PREFIXING THE DESIGNATIONS SHOWN ON THIS DWG WITH 2EG.
 - RELAYS SHALL BE THE TYPES SHOWN ON THIS DWG
 - THIS SWGR IS CLASS I.E.

| REV | NO. | DATE | DESCRIPTION | BY | CHKD | APPV |
|-----|-----|----------|---|-----------|-----------|-----------|
| 1 | 1 | 11/27/67 | ISSUED FOR CONSTRUCTION | J. Temple | J. Temple | J. Temple |
| 2 | 2 | 12/15/67 | REVISED FOR 2EG-EMVS-11-A AND 2EG-EMVS-12-B | J. Temple | J. Temple | J. Temple |
| 3 | 3 | 1/15/68 | REVISED FOR 2EG-EMVS-11-A AND 2EG-EMVS-12-B | J. Temple | J. Temple | J. Temple |
| 4 | 4 | 2/15/68 | REVISED FOR 2EG-EMVS-11-A AND 2EG-EMVS-12-B | J. Temple | J. Temple | J. Temple |
| 5 | 5 | 3/15/68 | REVISED FOR 2EG-EMVS-11-A AND 2EG-EMVS-12-B | J. Temple | J. Temple | J. Temple |
| 6 | 6 | 4/15/68 | REVISED FOR 2EG-EMVS-11-A AND 2EG-EMVS-12-B | J. Temple | J. Temple | J. Temple |
| 7 | 7 | 5/15/68 | REVISED FOR 2EG-EMVS-11-A AND 2EG-EMVS-12-B | J. Temple | J. Temple | J. Temple |
| 8 | 8 | 6/15/68 | REVISED FOR 2EG-EMVS-11-A AND 2EG-EMVS-12-B | J. Temple | J. Temple | J. Temple |
| 9 | 9 | 7/15/68 | REVISED FOR 2EG-EMVS-11-A AND 2EG-EMVS-12-B | J. Temple | J. Temple | J. Temple |
| 10 | 10 | 8/15/68 | REVISED FOR 2EG-EMVS-11-A AND 2EG-EMVS-12-B | J. Temple | J. Temple | J. Temple |
| 11 | 11 | 9/15/68 | REVISED FOR 2EG-EMVS-11-A AND 2EG-EMVS-12-B | J. Temple | J. Temple | J. Temple |
| 12 | 12 | 10/15/68 | REVISED FOR 2EG-EMVS-11-A AND 2EG-EMVS-12-B | J. Temple | J. Temple | J. Temple |

| | | |
|----------------------------------|-------------|-----------------|
| INTAKE STRUCTURE | | |
| UNIT 2 | | |
| SINGLE LINE | | |
| 6900V SWITCHGEAR 2ET2-A & 2ET2-B | | |
| 2EG-EMVS-11-A AND 2EG-EMVS-12-B | | |
| BELLEVILLE NUCLEAR PLANT | | |
| TENNESSEE VALLEY AUTHORITY | | |
| DIVISION OF ENGINEERING DESIGN | | |
| SUBMITTED | RECOMMENDED | APPROVED |
| J. Temple | J. Temple | J. Temple |
| KNOWVILLE | 11-22-77 | 2KW2718-EG-1 R5 |
| 35W78-1 | | |

59-438
Docket # 880 (450) 536
Draw 3-25-83 of Document
REVISION DOCKET FILE

INSPECTED AND APPROVED FOR ISSUE
R.M. [Signature]
DESIGN PROJECT NUMBER