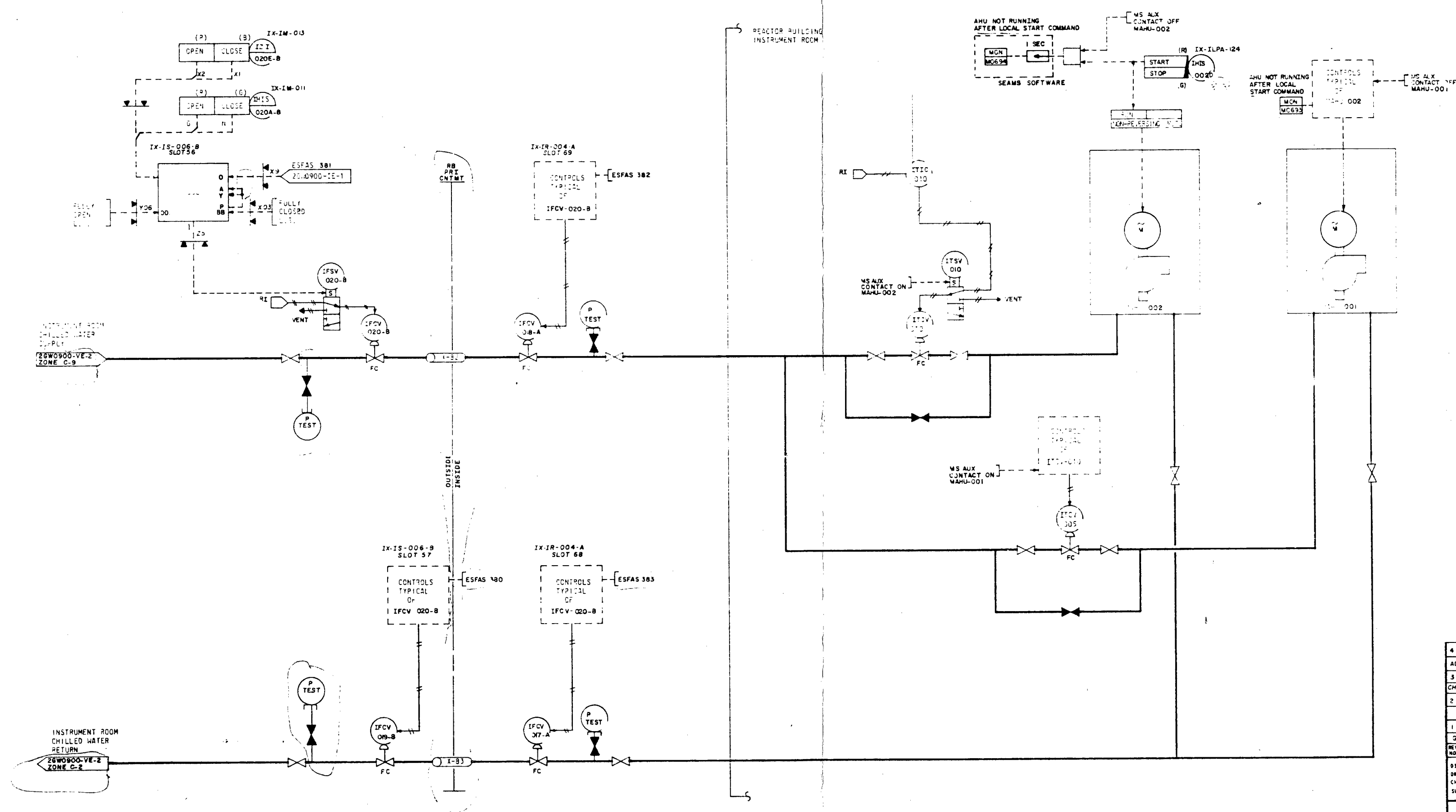


SEE SHEET ONE FOR NOTES



# PRC APERTURE CARD

4	1358	11-19-81	ICV 020-A, 020-B, 020-C	FCV 020-A, 020-B, 020-C	IX-IR-004-A, IX-IR-006-B	ESFAS 382, 383, 380	STIC 010, ITSV 010, ITCV 005	MANU-001, MANU-002	IX-ILPA-124	MCN M0634, M0633
ADDED ESFAS NO., FSAR FIG NO., MADE MINOR CHANGES										
3	868, 51	7-7-80	ICV 020-B	FCV 020-B	IX-IR-004-A	ESFAS 382	STIC 010	MANU-002	IX-ILPA-124	MCN M0634
CHANGED ITCV-005-B-010 FAIL POSITION AND CONTROLS MADE MINOR CHANGES										
2	SI	5-1-77	ICV 020-B	FCV 020-B	IX-IR-004-A	ESFAS 382	STIC 010	MANU-002	IX-ILPA-124	MCN M0634
MINOR CHANGES										
1	SI	11-4-77	ICV 020-B	FCV 020-B	IX-IR-004-A	ESFAS 382	STIC 010	MANU-002	IX-ILPA-124	MCN M0634
GENERAL REVISIONS										
REV	ICR NO.	DATE	DISC	DOWN	COND	SUPV	ENGR	INSP	INSTR	APPR
DESIGN	J. B. BEEVES									
CHKD	J. B. BEEVES									
SUPV	J. B. BEEVES									

GENERAL UNITS 1 & 2	
FUNCTIONAL CONTROL LOGIC DIA.	
REACTOR BUILDING COOLING SYSTEM	
BELLFONTE NUCLEAR PLANT TENNESSEE VALLEY AUTHORITY DIVISION OF ENGINEERING DESIGN	
SUBMITTED	RECOMMENDED
J. B. BEEVES	J. B. BEEVES
APPROVED	J. B. BEEVES
KNOXVILLE 11-19-79	

Sheet # 50-438  
 Control # 8'304050536  
 Date 3-25-83 of Document  
 REGULATORY DOCKET FILE

FSAR FIG 6.2.2-2

INSPECTED AND APPROVED FOR ISSUE  
*R.M. Hodge*

PRINTS REC'D	
BY	
DATE	
NO.	
ME	
CE	
AD	
CO	
ED	
MD	
BY	
SW	
PL	