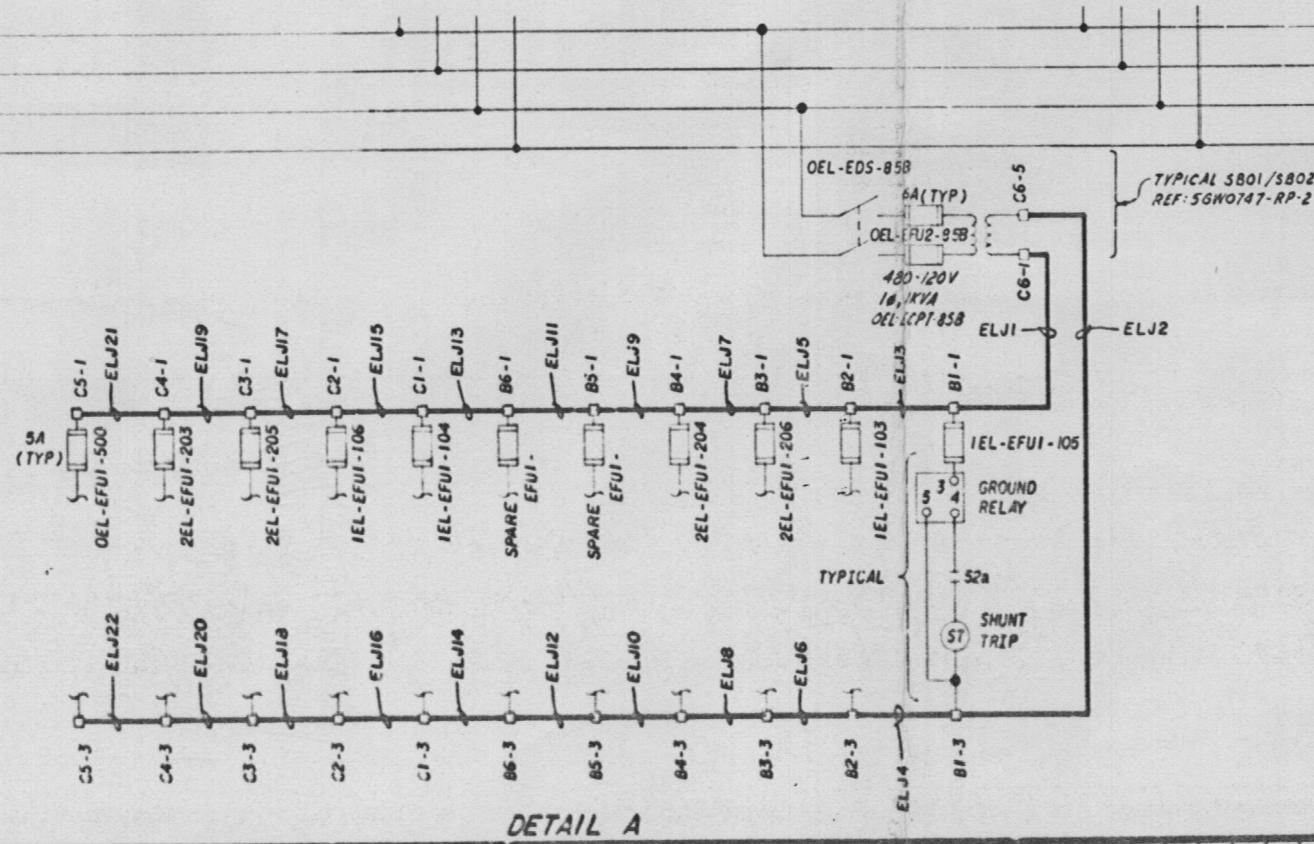
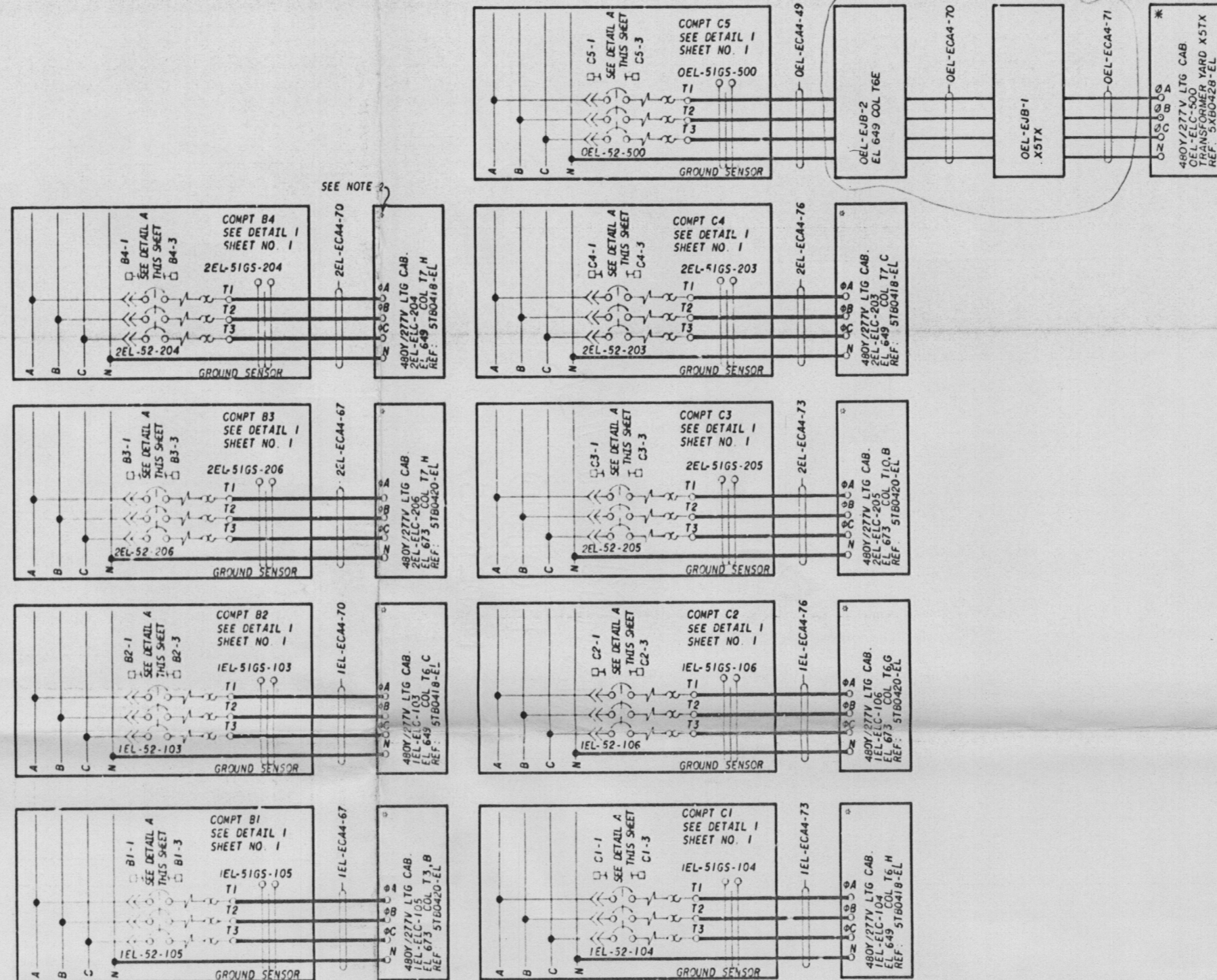
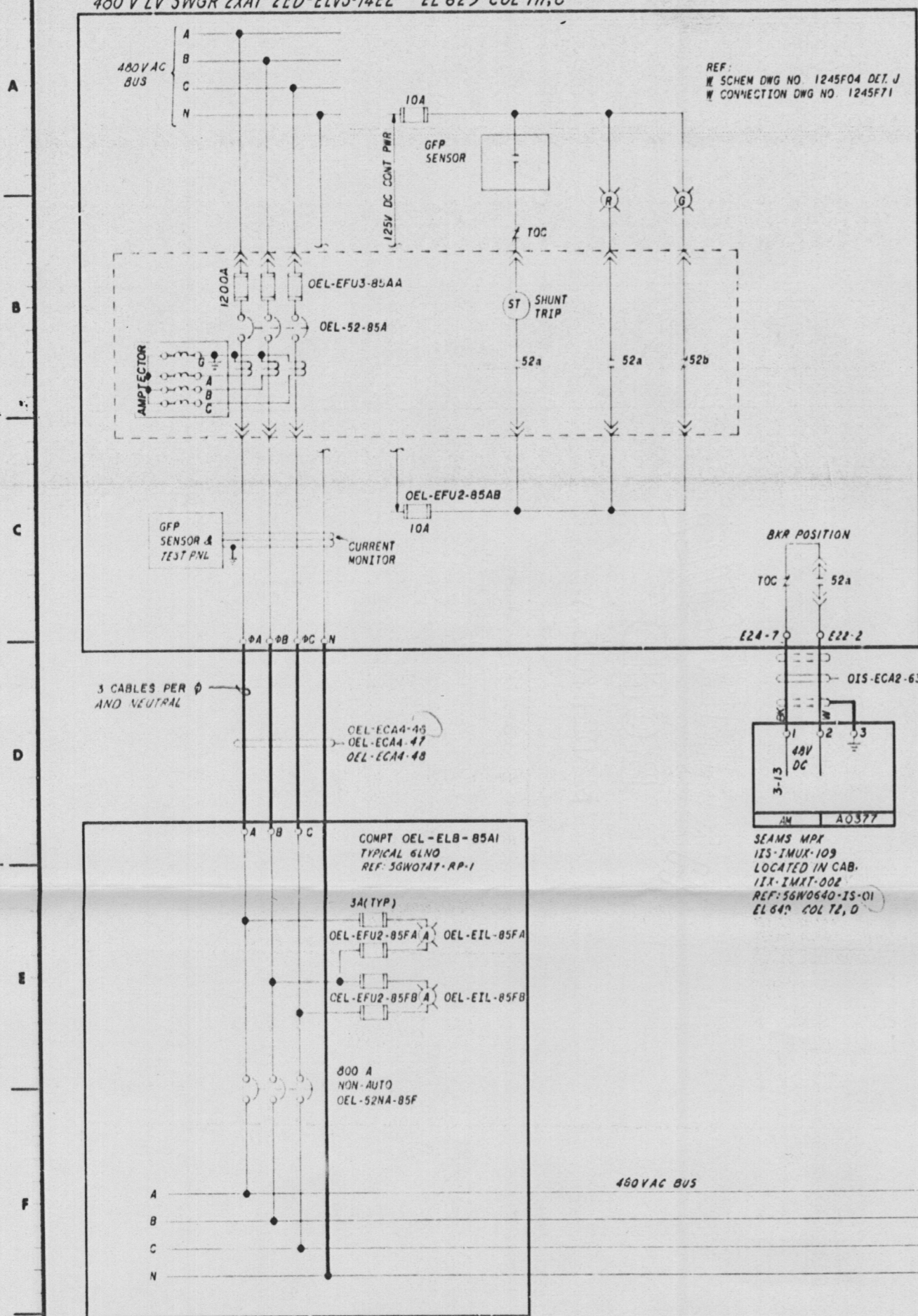


480 V LV SWGR 2XAI 2ED-ELVS-14E2 EL 629 COL T11,C

480V AC
LIGHTING BOARD I (COMPARTMENTS)
OEL-ELB-85
EL 649 COL T6,E

NOTES:
1. FOR GENERAL NOTES AND SYMBOLS SEE DWG 50W0747-EL-01.
2. BRANCH FEEDERS FROM 480V/277V LTG CABINETS (SHOWN WITH *) TO 480-208Y/120V LTG TRANSFORMERS ARE SHOWN ON SHEET NO. 11



480V LIGHTING BOARD FEEDERS TO 480Y/277V LTG CABINETS AND TO 208Y/120V LIGHTING SYSTEM

PRC APERTURE CARD

50-438
830450536
Date 3-25-83 of Document REGULATORY DOCKET FILE

1	SI	15-9-2001	50-438	830450536	3-25-83					
ADDED CABLES OEL-ECA4-46, 70, 87. ADDED REF DWG SHEET NO.										
REV	NO	ECN NO	DATE	ISSN	DRW	CHKD	APPV	INSP	ENGR	APPR
OSDN	PLM	WJG	WJG	WJG	WJG	WJG	WJG	WJG	WJG	WJG
CHD	JUL	JUL	JUL	JUL	JUL	JUL	JUL	JUL	JUL	JUL
SCALE: EXCEPT AS NOTED										
GENERAL UNITS 182										
WIRING DIAGRAM NORMAL AC LIGHTING FEEDERS										
BELLEFONTE NUCLEAR PLANT TENNESSEE VALLEY AUTHORITY DIVISION OF ENGINEERING DESIGN										
SUBMITTED			RECOMMENDED			APPROVED			N	
INSPECTED AND APPROVED FOR ISSUE										
KNOXVILLE 3-7-83 88 E 50W0747-EL-10 R1										

INSPECTED AND APPROVED FOR ISSUE

KNOXVILLE 3-7-83 88 E 50W0747-EL-10 R1

RECORD DRAWING AS CONSTRUCTED

PRINT SIZE POINTS NEED-8