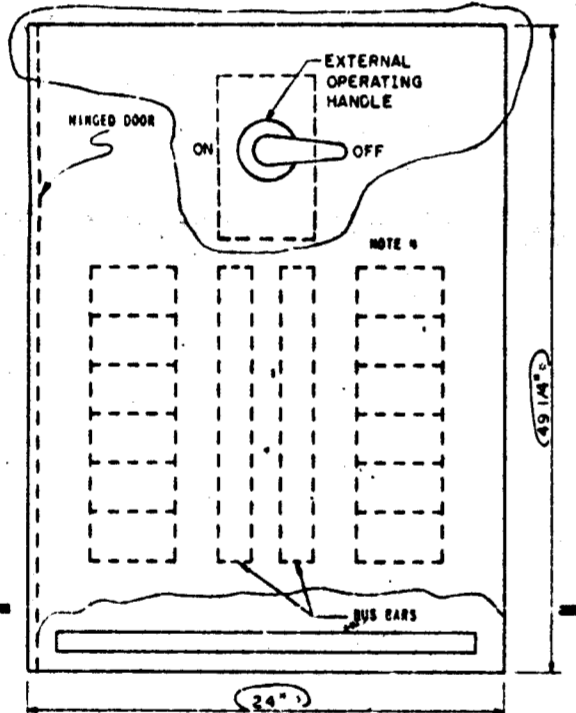
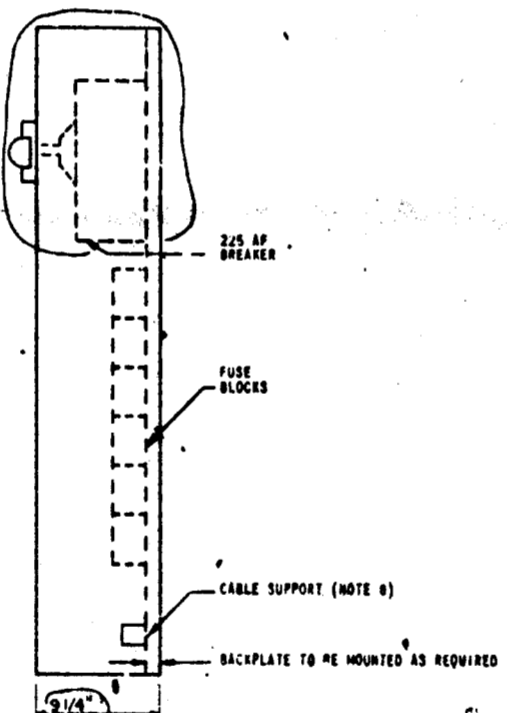


125V DC CLASS IE DIESEL GENERATOR DISTRIBUTION PANEL 1EU-FOP-56-A 1EU-ELP-57-B
TRAIN B, COL. 02J, EL 629

- NOTES:
- ALL DEVICES SHOWN ON THIS DRAWING ARE CLASS IE, UNLESS OTHERWISE SHOWN OR TRAIN B IS IDENTICAL, EXCEPT FOR PANEL NUMBER AND "B" SEPARATION GROUP ASSIGNMENT.
 - WIRING SHALL BE PERFORMED IN ACCORDANCE WITH THE DIESEL GENERATOR MANUFACTURER'S WIRING DIAGRAMS AND PANEL DIMENSIONS. IF VARIOUS MANUFACTURER'S WIRING DIAGRAMS AND PANEL DIMENSIONS ARE SHOWN, THEY SHALL BE ACCEPTABLE SUBJECT TO THE APPROVAL. PANEL SHALL BE SURFACE MOUNTABLE, WITH WIRING COVER TO MEET OR EXCEED IEEE 118 (120 1.5 (0.25)) REQUIREMENTS. SPACE SHALL BE PROVIDED FOR TOP AND BOTTOM CP-101 ENTRY.
 - NON-AUTOMATIC CIRCUIT BREAKER, 225 AMP FRAME, TWO POLE, NON-AUTOMATIC, USED AS MAIN DISCONNECT, WITH INTERNAL HANDLE OPERATED THROUGH THE DOOR OF THE PANEL, (BISTROHOUSE TYPE, S.A. BREAKERS).
 - NON-AUTOMATIC BREAKER MUST HAVE SHORT-CIRCUIT CURRENT RATINGS AT 125V DC AS FOLLOWS:
 - 4,000 A 1.0 SECONDS
 - 5,000 A 0.166 SECONDS
 - 11,000 A 0.0166 SECONDS
 - PORCELAIN TWO POLE FUSE BLOCKS FOR B.E.C. SIZE, CLASS B-TYPE FUSES, RATED AT 200, 250V DC BUSBAR NO. 2000, 14 EQUAL.
 - FUSES SHALL HAVE INTERRUPTING CAPACITY OF 200,000 OHM SYMMETRICAL AMP/AT 250V DC LUSHMAN TYPE FRN-M CLASS BUS, OR EQUAL.
 - FIELD TO WIRE FUSE TUBES AND FUSE BLOCKS WITH CORRESPONDING WIRE NUMBERS.
 - CABLE SUPPORT SHALL BE UNISTRUT TYPE P-1000, OR EQUAL.
 - MANUFACTURER SHALL WIRE BUS BARS TO FUSES, WIRING SHALL BE STRANDED NO. 8 AND CONDUCTOR, WITH SELF-EXTINGUISHING INSULATION PER UL-FREI VERTICAL PLANE TEST, RATED 600V AND 90°C, TYPE EP-HYPOFLON.

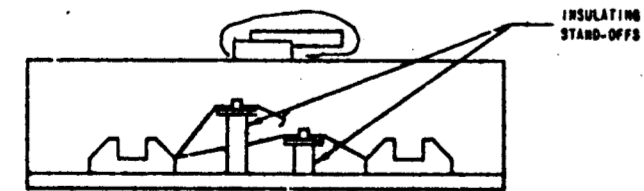


FRONT VIEW
125V DC CLASS IE DC DISTR PHL
1EU-FOP-56-A 1EU-ELP-57-B
SCALE: NONE



SIDE VIEW
125V DC CLASS IE DC DISTR PHL
1EU-FOP-56-A 1EU-ELP-57-B
SCALE: NONE

• DIMENSIONS ARE APPROXIMATE



SECTION A-A
125V DC CLASS IE DC DISTR PHL
1EU-FOP-56-A 1EU-ELP-57-B
SCALE: NONE

PRC APERTURE CARD

Doc# 50-438
Cont# 8304050536
Date 3-25-83
of Document
REGULATORY DOCKET FILE

COMPANION DWGS
50W2640-EU-03
SCALE AS SHOWN

REVIEWED		
RC(CIVIL)	N/A	
RE(ELEC)	N/A	
RM(MECH)	N/A	

REVISED LOADS, ADDED CONTRACT NUMBER INCREASED PHL CAP ADDED TO			
DATE	BY	CHKD	APP'D
SCALE: EXCEPT AS NOTED			
DIESEL GENERATOR BLDG. UNIT I			
SCHEMATIC DIAGRAM 125V CLASS IE DC POWER DISTRIBUTION SYSTEM			
BELLEFONTE NUCLEAR PLANT TENNESSEE VALLEY AUTHORITY DIVISION OF ENGINEERING DESIGN			
DESIGNED	RECOMMENDED	APPROVED	
<i>[Signature]</i>	<i>[Signature]</i>	<i>[Signature]</i>	
KNOXVILLE 11-276 88 E 50W1640-EU-03			