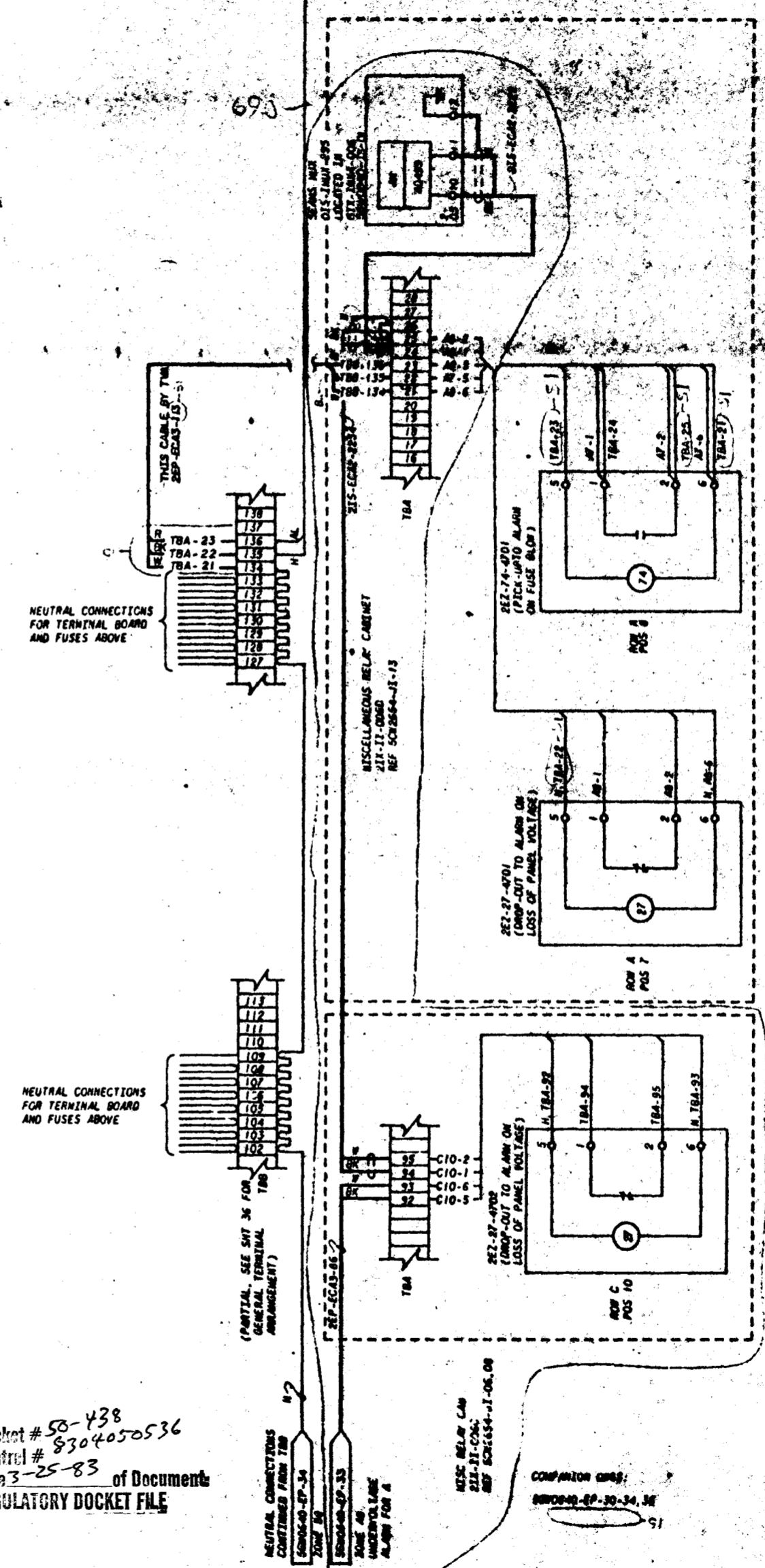


120 VAC INSTRUMENT POWER DISTRIBUTION PANEL 2EZ-EDP-47  
 (CONTINUED FROM SGM0640-EP-32, 33, 34)  
 FIELD WIRING BY TVA



NOTES:  
 1. FOR GENERAL NOTES AND REFERENCES REFER TO SGM0640-EP-30.  
 2. MISCELLANEOUS RELAY CABINETS 217-11-0000 AND 217-11-0001 ARE PROVIDED ON TVA CONTRACT 78K4-021304. WIRING BETWEEN CABINETS IS BY TVA.  
 3. THIS DRAWING SUPERSEDES Gould DRAWING 648-65043003, SHEET 4, CONTRACT 78K4-021305, FOR CABINET OCCUPANTATION.

REFERENCE DRAWINGS:  
 SCH2654-41-06, 08, 13..... WIRING DIAGRAM, NISC RELAY CABINETS

PRC APERTURE CARD

Docket # 58-438  
 Control # 9304050536  
 Date 3-25-83 of Document  
 REGULATORY DOCKET FILE

REV	BY	DATE	DESCRIPTION
1	W. STEVENSON	3-25-83	ISSUE FOR PRC APERTURE CARD
2	W. STEVENSON	4-15-83	REVISED TO SHOW CHANGES TO RELAY CABINETS

SCALE: NTS EXCEPT AS NOTED

GENERAL UNITS 1 & 2

**SCHEMATIC DIAGRAM**  
**250 VDC NORMAL POWER**  
**DISTRIBUTION SYSTEM**

**BELLEVILLE NUCLEAR PLANT**  
**TENNESSEE VALLEY AUTHORITY**  
 DIVISION OF ENGINEERING DESIGN

APPROVED: W. STEVENSON  
 CHECKED: J. L. STEVENSON  
 DESIGNED: W. STEVENSON

INSPECTED AND APPROVED FOR ISSUE: W. STEVENSON

88 E SGM0640-EP-35