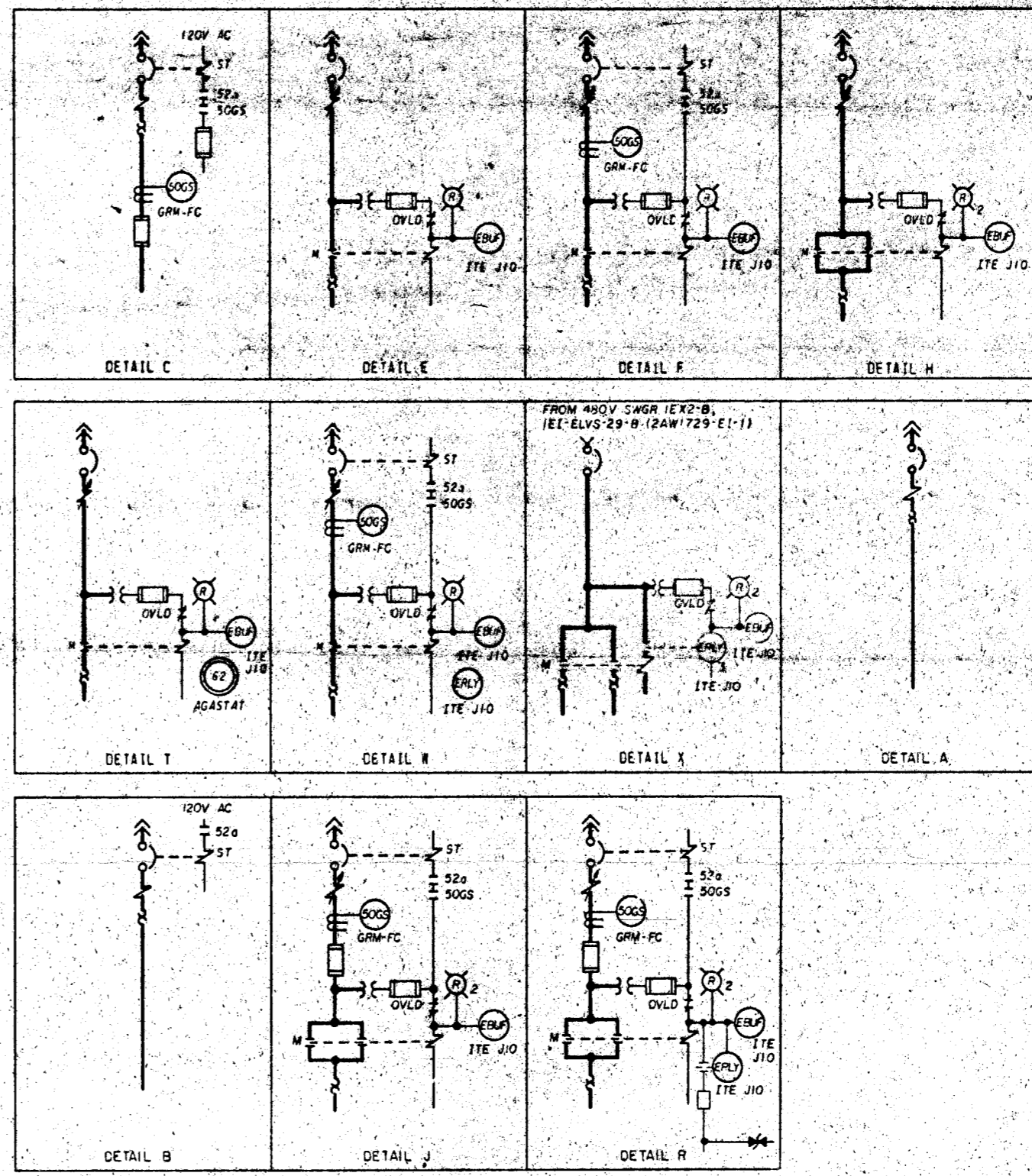
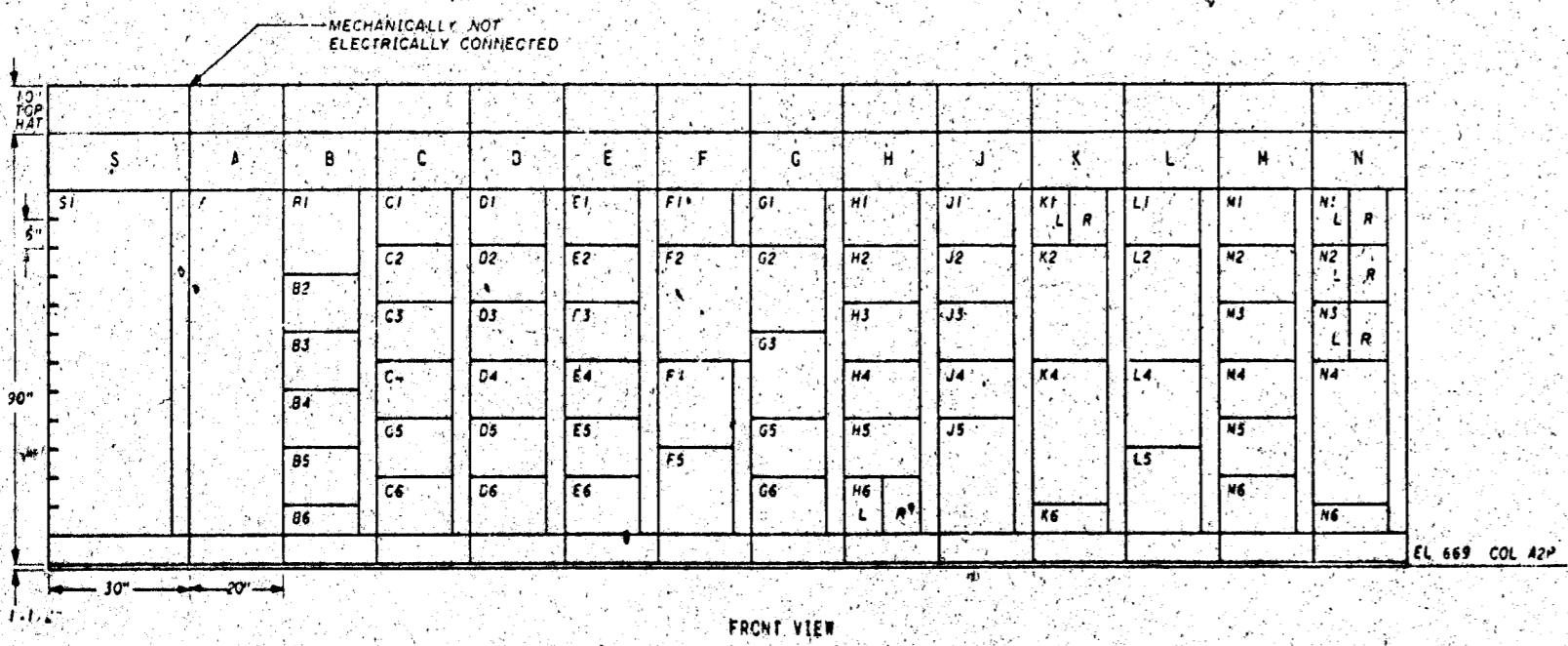
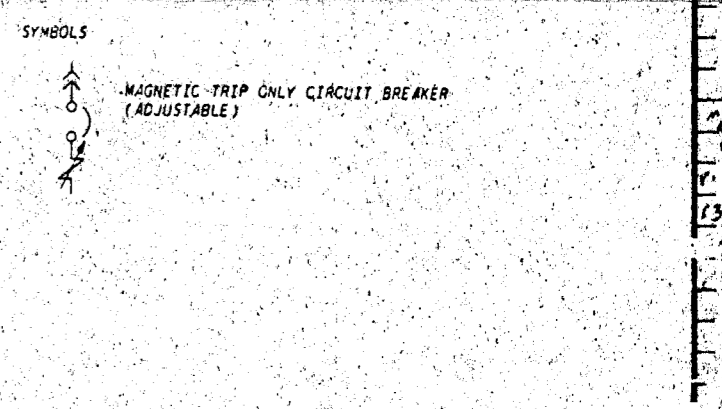


COMP NO.	LOAD	UNID	DETAIL	LOAD SIZE	SCH DWG REFERENCE
A1	4" AIR BREAKER	1E1-52NA-47F-B	SEE KEY DIAG		
B1	CP CHIMNEY ISOLATION VALVE BLEED TO WD-9 SAMPLE	1N1-1FCV-182-B	J		5GW0640-NL-11
B2	ERCW SUPPLY HDR B TO CCS	1KE-1FCV-297-B	H	0.66HP	5GW1740-KE-17
B3	HUS WASH TANK 1B MOV (RBS-HV12B)	1NS-1FCV-087-B	H	0.67HP	5GW0640-NS-05
B4	AFW TO ST GEN 1B FROM ELEC	1CA-1FCV-054-B	H	1.6HP	5GW0640-CA-13
B5	RBS SL. WLY 1B MOV (RBS-HV14B)	1NS-1FCV-064-B	H	4HP	5GW0640-NS-06
B6	FUTURE - 6 INCH	1E1			
C1	ERCW SUPPLY HDR 1B TO WASTE DISPOSAL MOV	1KE-1FCV-406-B	H	0.13HP	5GW1740-KE-21
C2	SPARE	1E1			
C3	ERCW SUCTION SUPPLY TO AFW PUMP 1B MOV	1CA-1FCV-100-B	H	0.5HP	5GW0640-CA-08
C4	ERCW OUTLET RUC UNIT 1B2-B MOV	1KE-1FCV-330-B	H	0.33HP	5GW1740-KE-24
C5	AFW ELEC PUMP DISCHARGE K-COIN FROM TRAIN B MOV	1CA-1FCV-188-B	H	1.6HP	5GW0640-CA-04
C6	ERCW SUPPLY HDR 1B TO UNIT 1 SPENT FUEL POOL MOV	1KE-1FCV-477-B	H	0.33HP	5GW1740-KE-16
D1	DHR LPI CROSS CONNECT ISOLATION MOV	1ND-1FCV-142-B	H	1.0HP	5GW1740-ND-05
D2	ERCW SUPPLY HDR 1B TO 2B MOV	1KE-1FCV-059-B	H	1HP	5GW1740-KE-17
D3	ERCW SUCTION SUPPLY TO AFW PUMP 1B MOV	1CA-1FCV-099-B	H	0.5HP	5GW0640-CA-07
D4	SPARE	1E1			
D5	SPARE	1E1			
D6	DHR PUMP 1B-B SUCTION FROM RWST MOV (DH-HV7B)	1ND-1FCV-104-B	H	1.3HP	5GW1740-ND-10
E1	TRAIN 1B ESS CONTROL AIR ISLN MOV	1R1-1FCV-283-B	H		5GW1640-RK-04
E2	TRAIN 1B SERVICE AIR ISLN MOV	1R1-1FCV-045-B	H		5GW1640-RK-04
E3	HUS-DHR PUMP SUCTION MOV (RBS-HV14B)	1NS-1FCV-098-B	H		5GW0640-NS-07
E4	DHR AUX PRESSURIZER MOV (DH-HV13)	1ND-1FCV-202-B	H		5GW1740-ND-15
E5	FUTURE - 12 INCH	1E1			
E6	SPARE	1E1			
F1	MCC LOSS OF VOLTAGE RLY		SEE KEY DIAG		
F2	120V 1P-CKT FKR-COMPT.		SEE KEY DIAG		
F4	FUSE COMPT		SEE KEY DIAG		
F5	MCC CONTROL TRANSFORMER AND DISCONNECT SWITCH		SEE KEY DIAG		
G1	SPARE	1E1			
G2	DHR LETDOWN MOV (DH-HV11A)	1ND-1FCV-091-B	J	9.5HP	5GW1740-ND-09
G3	DHR LETDOWN MOV (DH-HV12B)	1ND-1FCV-179-B	J	9.5HP	5GW1740-ND-06
G5	ERCW INLET RBG UNIT 1B2-B MOV	1KE-1FCV-323-B	H		5GW1740-KE-24
G6	DHR PUMP 1B-B SUCTION FROM RB EMER SUPPLY MOV (DH-HV2B)	1ND-1FCV-192-B	H	0.7HP	5GW1740-ND-08
H1	ZONE 1B ESSENTIAL ELEC EQPT ROOM SUPPLY FAN	1VA-EMOT-129-B	E	7.5HP	5GW1740-VA-11
H2	ERCW BOOSTER PUMP AHU	1VA-EMOT-315-B	E	3HP	5GW1740-VA-17
H3	ELEC 2K PUMP 1B-B AN AHU	1VA-EMOT-142-B	F	10HP	5GW1740-VA-14
H4	ZONE 1B ESSENTIAL ELEC EQPT ROOM EXH FAN	1VA-EMOT-133-B	E	10HP	5GW1740-VA-13
H5	DHR PUMP 1B-B AUX LUBE OIL PUMP	1ND-EMOT-221-B	E	1HP	5GW1740-ND-04
H6L	HEAT TRACING SYSTEM FOR	1MC-ET-13B-B	B	3KVA	5GW1740-MC-02
H6R	HEAT TRACING SYSTEM FOR	1MC-ET-12B-B	B	20KVA	5GW1740-MC-03
J1	RBS PUMP 1B-B ROOM AHU	1VA-EMOT-141-B	E	10HP	5GW1740-VA-14

COMP NO.	LOAD	UNID	DETAIL	LOAD SIZE	SCH DWG REFERENCE
J2	DHR PUMP 1B-B ROOM AHU	1VA-EMOT-140-B	E	15HP	5GW1740-VA-14
J3	ZONE 1B FAN ROOM AHU	1VA-EMOT-134-B	E	15HP	5GW1740-VA-15
J4	ZONE 1B MECH EQPT ROOM SUPPLY FAN	1VA-EMOT-131-B	T	10HP	5GW1740-VA-10
J5	CONT BLDG CHILLED WATER PUMP	0VK-EMOT-004-B	F	50HP	5GW0640-VK-18
K1L	ALT FOR SP 125V OIL BAY OHR	1EU-EMOT-35-B	A	4.4KVA	5GW1640-EU-02
K1R	ZONE WTR CHILLER OIL PUMP	1VE-EMOT-30-B	A	3HP	5GW1740-VE-07
K2	ZONE 1B MECH EQPT ROOM EXHAUST FAN	1VA-EMOT-093-B	F	40HP	5GW1740-VA-12
K4	CONT BLDG ESF MCR AHU	0VK-EMOT-012-B	W	75HP	5GW0640-VK-29
K6	FUTURE - 6 INCH	1E1			
L1	SPARE	1E1			
L2	SPARE	1E1			
L4	DUMP TO SLUMP ISOLATION MOV	1ND-1FCV-237-B	R	0.7HP	5GW1740-ND-13
L5	SPARE	1E1			
M1	FUTURE	1E1			
M2	ZONE 1B SSCS ROOM AHU	1VA-EMOT-243-B	E	7.5HP	5GW1740-VA-16
M3	SPARE	1E1			
M4	CONT BLDG ESF MECH EQPT ROOM AHU	0VK-EMOT-018-B	E	7.5HP	5GW0640-VK-28
M5	ERCW SUPPLY HDR 1B TO WASTE DISPOSAL MOV	1KE-1FCV-408-B	H	0.13HP	5GW1740-KE-21
M6	FUTURE - 12 INCH	1E1			
N1L	CONT BLDG WTR CHILLER OIL PMP	0VK-EMOT-544-B	A	5HP	5GW0640-VK-18
N1R	FUTURE	1E1			
N2L	STATION VENT RADN MON FDR	1LR-ILDA-050-B	A	3.4KVA	5GW0640-LR-02
N3L	FUTURE - HALF COMPT	1E1			
N3R	SPARE	1E1			
N4	DHR INJECTION MOV (DH-HV1B)	1ND-1FCV-174-B	H	26.4HP	5GW1740-ND-11
N6	FUTURE - 6 INCH	1E1			
S1	RB COOLING FAN	1VJ-EMOT-036-B	X		5GW1740-VJ-04



- NOTES
- 480V MOTOR CONTROL CENTER PROVIDED ON THE CONTRACT NO. 565-8642 BY GOULD/ITE
 - ALL MOLDED CASE 480V CIRCUIT BREAKERS ARE 30 000V WITH AN INTERRUPTING RATING OF NOT LESS THAN 25 000 RMS SYMMETRICAL AMPS AT 480V. CIRCUIT BREAKERS SHOWN WITH SHUNT TRIP COILS HAVE A TRIP COIL CAPABLE OF OPERATING AT 55 PERCENT RATED VOLTAGE. ALL 100A FRAME 480V CIRCUIT BREAKERS ARE ITE "HE" SERIES AND THE 400A FRAME 480V CIRCUIT BREAKERS ARE ITE "JL" SERIES.
 - ALL MOLDED CASE 120V CIRCUIT BREAKERS ARE 10 100A FRAME THERMAL MAGNETIC WITH 15A TRIP. ITE "BO" SERIES.
 - ALL 5A AND 10A FUSES ARE GOULD/SHAWMUT AMP. TRAP. FORM 600 MIDGE TYPE 2.
 - FUSES IN THE POWER CIRCUITS ARE GOULD/SHAWMUT CLASS "P" CURRENT LIMITING FUSES ARE REQUIRED TO PROVIDE RECURRENT PROTECTION FOR PRIMARY CONTAINMENT PENETRATIONS.
 - ALL CONTROL TRANSFORMERS ARE 10 480/120V WITH GROUNDING SECONDARY. THE SECONDARY OF THE 150 VA TRANSFORMER IS FUSED WITH A 1.5A DUAL-ELEMENT TIME-DELAY BUSSMAN TYPE FNO FUSE. THE SECONDARY OF THE 350 VA TRANSFORMER IS FUSED WITH A 3.5A DUAL-ELEMENT TIME-DELAY GOULD/SHAWMUT TYPE 10M FUSE.
 - GROUND FAULT PROTECTION (SGGS) ITE TYPE GRN-FC PICKS UP AT APPROXIMATELY 10 AMPS PRIMARY CURRENT WITH NO INTENTIONAL TIME DELAY.
 - THE PRIMARY OF THE 5KVA CONTROL POWER TRANSFORMER IS FUSED WITH A 15A TIME DELAY BUSSMAN TYPE JMC-15 FUSE.
 - THE MOTOR CONTROL CENTER ARRANGEMENT IS CONTROLLED BY THE FRONT VIEW LOCATED ON THIS DRAWING. COMPARTMENT CONFIGURATION CONTROL DRAWINGS ARE REFERENCED IN THE MOTOR CONTROL CENTER COMPUTERIZED CIRCUIT SCHEDULE DOCUMENTS DEVICE RATINGS AND ADJUSTABLE CIRCUIT BREAKER SETTINGS.
 - THIS MCC IS CLASS 1E.
 - ALL AGASTAT RELAYS ARE THE 1000 SERIES.
- REFERENCED DRAWINGS AND DOCUMENTS
- PLANT AC/AUXILIARY POWER SYSTEM SINGLE LINE 26WD220-AP-01
 - SINGLE LINE DIAGRAM 480V SWITCHGEAR 1E2-B 24M1729-EI-1
 - 480V CLASS 1E AC AUXILIARY POWER DISTRIBUTION SYSTEM SCHEMATIC 51M1740-EI-12
 - 480V MCC COMPARTMENT TYPICALS 51M0747-PP
 - 480V MCC 1E2-B COMPUTERIZED CIRCUIT SCHEDULE 51AC1765-EI



Docket # 50-438
Control # 380465536
Date 3-25-83 of Document
REGULATORY DOCKET FILE

PRC APERTURE CARD

COMPANION DWG: 5AW1735-EI-03
5AW1735-EI-02 HAS BEEN VOIDED

REV	NO.	DATE	DESCRIPTION
1	1	1-13-83	ISSUED FOR CONSTRUCTION
2	1	1-3-80	REVISED
3	1	12-16-79	REVISED
4	1	9-25-78	REVISED
5	1	9-25-78	REVISED
6	1	9-25-78	REVISED
7	1	9-25-78	REVISED
8	1	9-25-78	REVISED
9	1	9-25-78	REVISED
10	1	9-25-78	REVISED
11	1	9-25-78	REVISED
12	1	9-25-78	REVISED
13	1	9-25-78	REVISED
14	1	9-25-78	REVISED
15	1	9-25-78	REVISED
16	1	9-25-78	REVISED
17	1	9-25-78	REVISED
18	1	9-25-78	REVISED
19	1	9-25-78	REVISED
20	1	9-25-78	REVISED
21	1	9-25-78	REVISED
22	1	9-25-78	REVISED
23	1	9-25-78	REVISED
24	1	9-25-78	REVISED
25	1	9-25-78	REVISED
26	1	9-25-78	REVISED
27	1	9-25-78	REVISED
28	1	9-25-78	REVISED
29	1	9-25-78	REVISED
30	1	9-25-78	REVISED
31	1	9-25-78	REVISED
32	1	9-25-78	REVISED
33	1	9-25-78	REVISED
34	1	9-25-78	REVISED
35	1	9-25-78	REVISED
36	1	9-25-78	REVISED
37	1	9-25-78	REVISED
38	1	9-25-78	REVISED
39	1	9-25-78	REVISED
40	1	9-25-78	REVISED
41	1	9-25-78	REVISED
42	1	9-25-78	REVISED
43	1	9-25-78	REVISED
44	1	9-25-78	REVISED
45	1	9-25-78	REVISED
46	1	9-25-78	REVISED
47	1	9-25-78	REVISED
48	1	9-25-78	REVISED
49	1	9-25-78	REVISED
50	1	9-25-78	REVISED
51	1	9-25-78	REVISED
52	1	9-25-78	REVISED
53	1	9-25-78	REVISED
54	1	9-25-78	REVISED
55	1	9-25-78	REVISED
56	1	9-25-78	REVISED
57	1	9-25-78	REVISED
58	1	9-25-78	REVISED
59	1	9-25-78	REVISED
60	1	9-25-78	REVISED
61	1	9-25-78	REVISED
62	1	9-25-78	REVISED
63	1	9-25-78	REVISED
64	1	9-25-78	REVISED
65	1	9-25-78	REVISED
66	1	9-25-78	REVISED
67	1	9-25-78	REVISED
68	1	9-25-78	REVISED
69	1	9-25-78	REVISED
70	1	9-25-78	REVISED
71	1	9-25-78	REVISED
72	1	9-25-78	REVISED
73	1	9-25-78	REVISED
74	1	9-25-78	REVISED
75	1	9-25-78	REVISED
76	1	9-25-78	REVISED
77	1	9-25-78	REVISED
78	1	9-25-78	REVISED
79	1	9-25-78	REVISED
80	1	9-25-78	REVISED
81	1	9-25-78	REVISED
82	1	9-25-78	REVISED
83	1	9-25-78	REVISED
84	1	9-25-78	REVISED
85	1	9-25-78	REVISED
86	1	9-25-78	REVISED
87	1	9-25-78	REVISED
88	1	9-25-78	REVISED
89	1	9-25-78	REVISED
90	1	9-25-78	REVISED
91	1	9-25-78	REVISED
92	1	9-25-78	REVISED
93	1	9-25-78	REVISED
94	1	9-25-78	REVISED
95	1	9-25-78	REVISED
96	1	9-25-78	REVISED
97	1	9-25-78	REVISED
98	1	9-25-78	REVISED
99	1	9-25-78	REVISED
100	1	9-25-78	REVISED

SCALE: NTS EXCEPT AS NOTED

AUXILIARY BUILDING UNIT 1

SINGLE LINE 480V MCC 1E2-B 1E1-EMCC-67-B

BELLEFONTAINE NUCLEAR PLANT TENNESSEE VALLEY AUTHORITY DIVISION OF ENGINEERING DESIGN

SUBMITTED: O.T. Turner
RECOMMENDED: J.D. Jones
APPROVED: R.M. Maddox

INSPECTED AND APPROVED FOR ISSUE: O.T. Turner

DATE: 12-6-83

NO. 5AW1735-EI-1 R 6