

250V BATTERY BOARD, 2EP-EBB-01 COL C9P EL 610

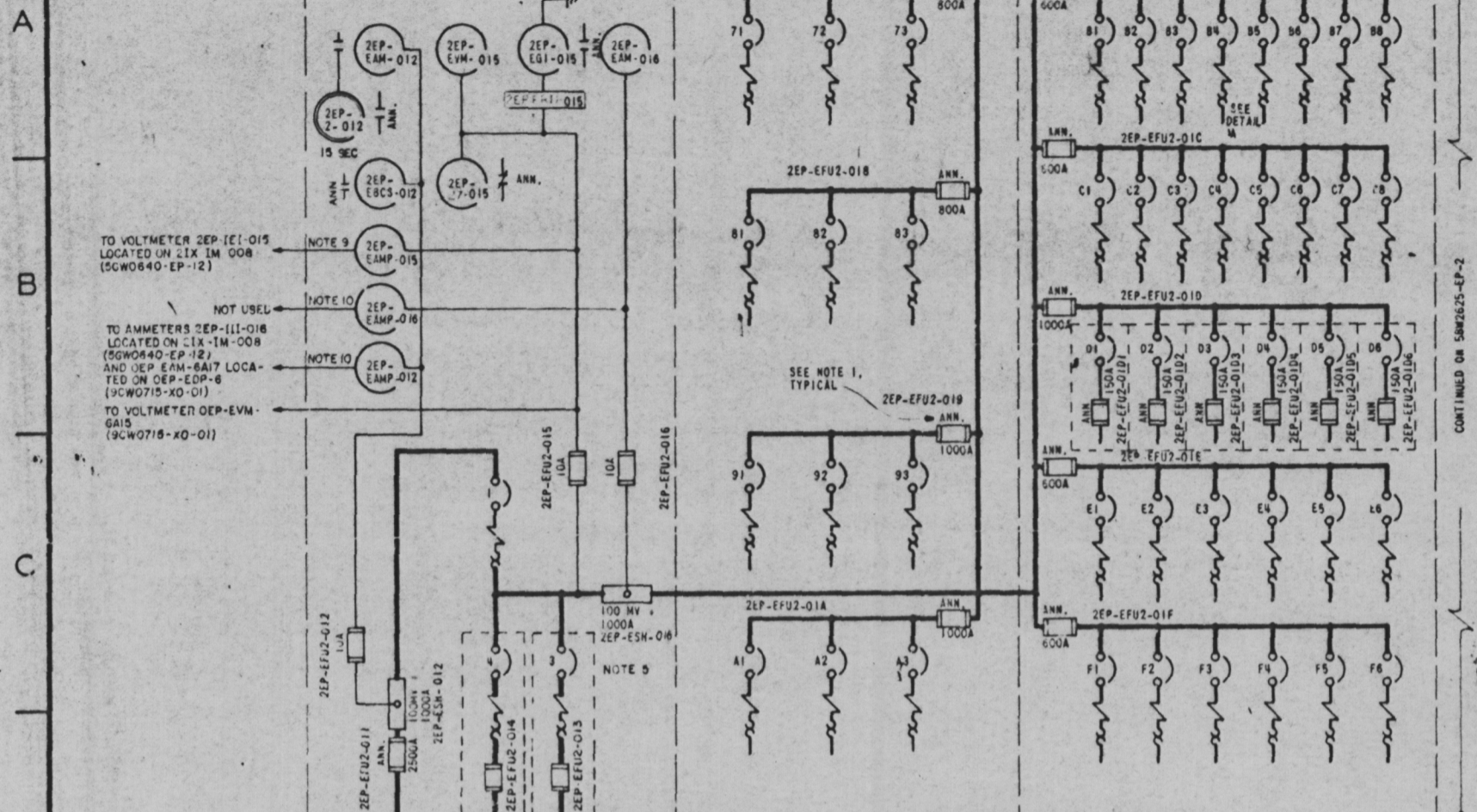


Table with 3 columns: FUSE, ANN, F.U.C. It lists fuse types and their corresponding alarm and fuse unit codes.

Circuit Schedule table with 5 columns: PNL, SER, UNID, FRAME, TRIP, CABLE, CIRCUIT. It lists the circuit schedule for various components, including battery chargers, power supplies, and pumps.

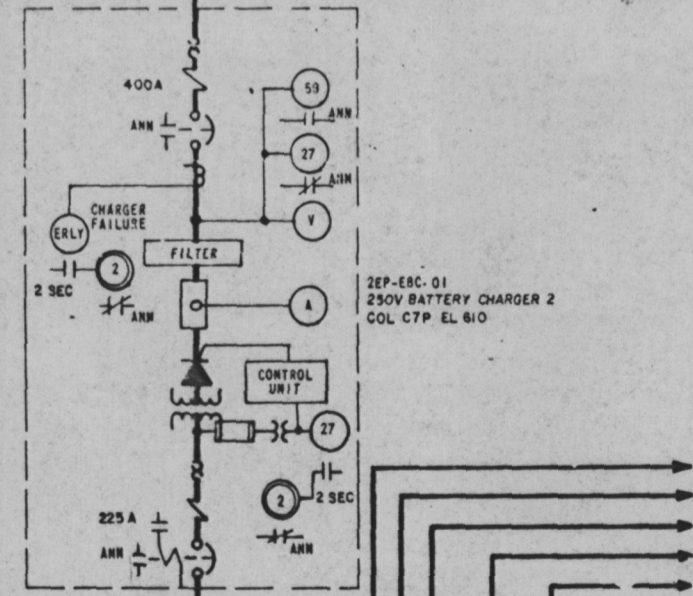
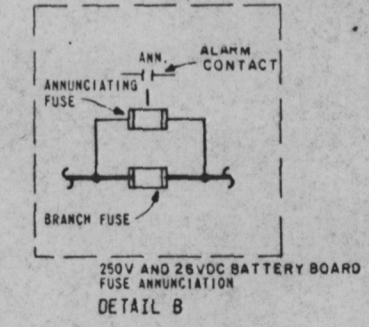
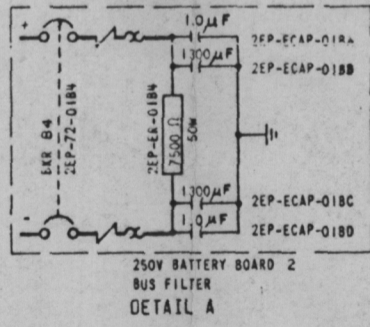
TO VOLTMETER ZEP-111-016 LOCATED ON 21X IM 008 (50W0440-EP-12)

TO AMMETERS ZEP-111-018 LOCATED ON 21X IM 008 (50W0440-EP-12) AND ZEP-111-017 LOCATED ON ZEP-EDP-01 (30W0710-X0-01)

ZEP-EB-01 250V BATTERY 2 COL C9N EL 610 Icc 20,000 A

TO 250V NORMAL DC TRANSFER SWITCH QEP-43-0A SBW1625-EP-1

- NOTES: 1. ALL BREAKERS ARE PROVIDED ALARM CONTACTS WHICH CLOSE WHEN BREAKER TRIPS DUE TO OVERLOAD OR SHORT CIRCUIT. 2. PANELS 4A, 4B, AND 5 INSTRUMENT FUSES ARE BUSS TYPE KWN.



Doc # 50-438
Control # 830450536
Date 3-25-83 of Document
REGULATORY DOCKET FILE

PRC APERTURE CARD

Engineering and revision blocks including a revision table, approval signatures, and project information for the 250V BATTERY SYSTEM.

THIS DRAWING IS UNDER CONFIGURATION CONTROL