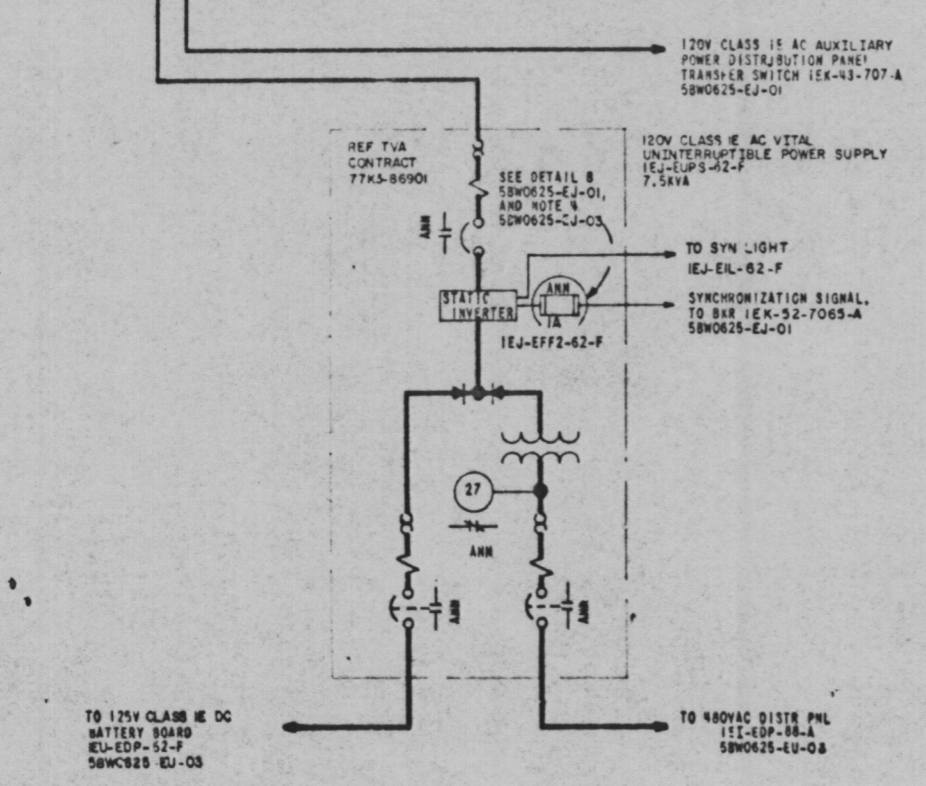
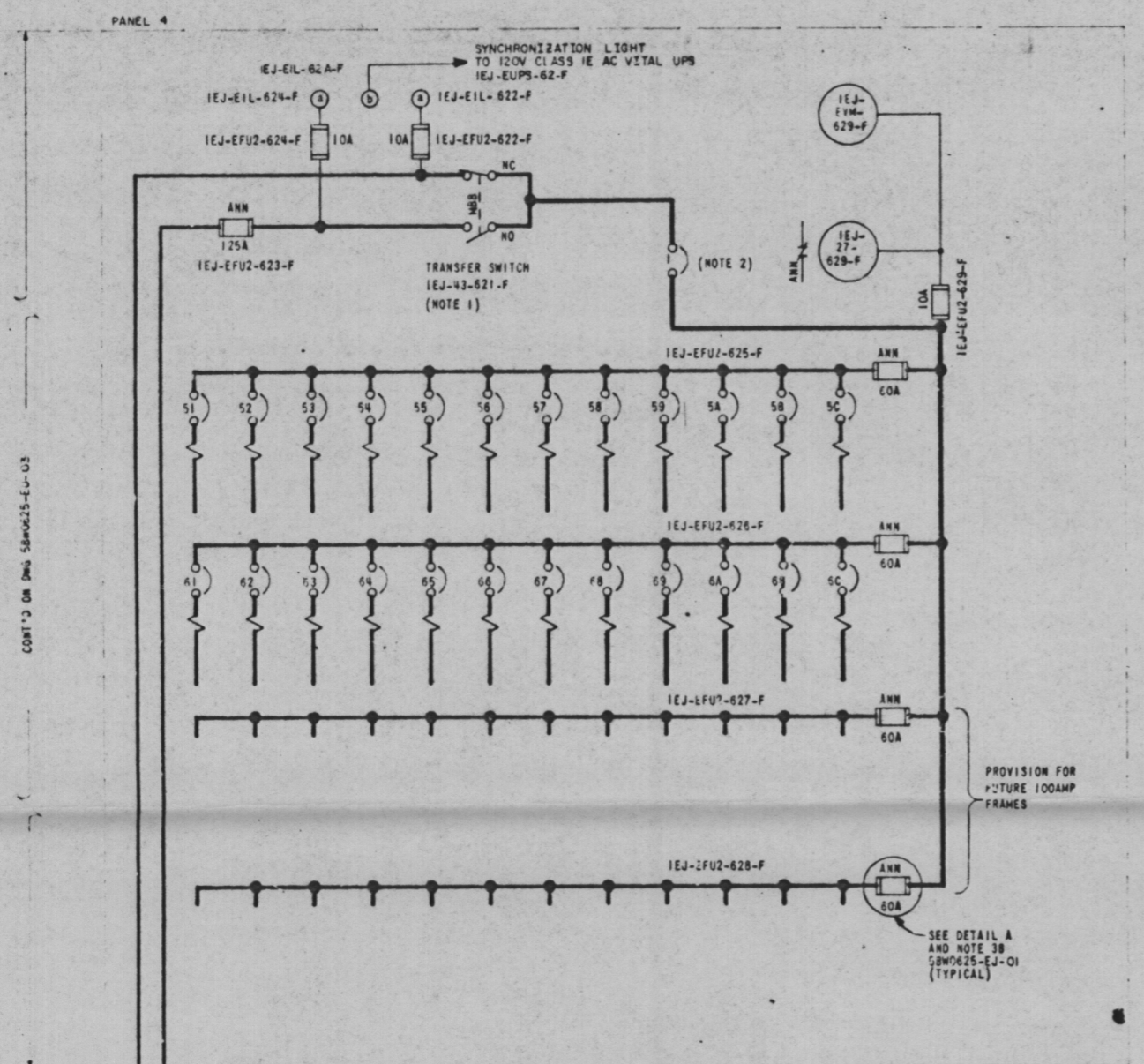


A  
B  
C  
D  
E  
F  
G

120V CLASS IE AC VITAL POWER DISTRIBUTION PANEL IEJ-EDP-62-F



PNL	BRK	UNID	FRAME	TRIP	CABLE	CIRCUIT SCHEDULE	CIRCUIT
W	1	IEJ-43-621-F	200		IEJ-ECA4-20-F	120V CLASS IE AC VITAL UNINTERRUPTIBLE POWER SUPPLY	NOTE 1
W	1	IEJ-43-621-F	150		IEJ-ECA4-21-A	120V CLASS IE AC AUXILIARY POWER DISTR PANEL	NOTE 2
W	51	IEJ-52-6251-F	100	15			
W	52	IEJ-52-6252-F	100	15			
W	53	IEJ-52-6253-F	100	15			
W	54	IEJ-52-6254-F	100	15			
W	55	IEJ-52-6255-F	100	15			
W	56	IEJ-52-6256-F	100	15			
W	57	IEJ-52-6257-F	100	15			
W	58	IEJ-52-6258-F	100	15	IEJ-ECA3-92-F	SEAMS ISOLATION RELAY IIS-EBUF-001-F	
W	59	IEJ-52-6259-F	100	15		TR A INSTR RM EXHAUST FAN DAMPERS IVA-EPV-303-F, 304-F	
W	60	IEJ-52-6260-F	100	15		120V CLASS IE AC PWR DISTR PNL IEJ-EUP-52A-F INSTRUMENTS	
W	61	IEJ-52-6261-F	100	15		(NMRP) CHANNEL F IIX-IM-017E-F	
W	62	IEJ-52-6262-F	100	15			
W	63	IEJ-52-6263-F	100	15			
W	64	IEJ-52-6264-F	100	15			
W	65	IEJ-52-6265-F	100	15			
W	66	IEJ-52-6266-F	100	15			
W	67	IEJ-52-6267-F	100	15			
W	68	IEJ-52-6268-F	100	15			
W	69	IEJ-52-6269-F	100	15			
W	70	IEJ-52-6270-F	100	15			
W	71	IEJ-52-6271-F	100	15			
W	72	IEJ-52-6272-F	100	15			
W	73	IEJ-52-6273-F	100	15			
W	74	IEJ-52-6274-F	100	15			
W	75	IEJ-52-6275-F	100	15			
W	76	IEJ-52-6276-F	100	15			
W	77	IEJ-52-6277-F	100	15			
W	78	IEJ-52-6278-F	100	15			
W	79	IEJ-52-6279-F	100	15			
W	80	IEJ-52-6280-F	100	15			
W	81	IEJ-52-6281-F	100	15			
W	82	IEJ-52-6282-F	100	15			
W	83	IEJ-52-6283-F	100	15			
W	84	IEJ-52-6284-F	100	15			
W	85	IEJ-52-6285-F	100	15			
W	86	IEJ-52-6286-F	100	15			
W	87	IEJ-52-6287-F	100	15			
W	88	IEJ-52-6288-F	100	15			
W	89	IEJ-52-6289-F	100	15			
W	90	IEJ-52-6290-F	100	15			
W	91	IEJ-52-6291-F	100	15			
W	92	IEJ-52-6292-F	100	15			
W	93	IEJ-52-6293-F	100	15			
W	94	IEJ-52-6294-F	100	15			
W	95	IEJ-52-6295-F	100	15			
W	96	IEJ-52-6296-F	100	15			
W	97	IEJ-52-6297-F	100	15			
W	98	IEJ-52-6298-F	100	15			
W	99	IEJ-52-6299-F	100	15			
W	100	IEJ-52-6300-F	100	15			

Δ - SEE NOTE 3

PRC APERTURE CARD

FUSE	ANN FUSE	FUSE SET
IEJ-EF02-623-F	IEJ-EFF2-623-F	3
IEJ-EF02-625-F	IEJ-EFF2-625-F	5
IEJ-EF02-626-F	IEJ-EFF2-626-F	8
IEJ-EF02-627-F	IEJ-EFF2-627-F	7
IEJ-EF02-628-F	IEJ-EFF2-628-F	8
(NOTE 3)	IEJ-EFF2-62-F	N/A

Document # 50-438  
Control # 8304050536  
Date 3-25-83 of Document  
REGULATORY DOCKET FILE

- GENERAL NOTES, DETAILS, AND REFERENCES ON SBW0625-EJ-01.
- NOTES:
- TRANSFER SWITCH IEJ-43-621-F HAS MAKE-BEFORE-BREAK OPERATION. ALTERNATE POSITION SELECTION CLOSURES AUXILIARY CONTACT (WIRED OUT FOR ANNUNCIATION).
  - BREAKER I IS NON-AUTOMATIC.
  - BREAKERS 51-60 ARE HEINEMANN SERIES CF, CURVE 3, MAGNETIC-HYDRAULIC CIRCUIT BREAKERS. "Δ" INDICATES HIGH-INRUSH MODEL, CURVE 30.
  - FUSES IEJ-EFF2-62-F ARE ANNUNCIATING TYPE USED FOR CIRCUIT PROTECTION (SEE DETAIL B, SBW0625-EJ-01).
  - ALL BRANCH OR FEEDER FUSES IN PANEL 6 ARE BUSS TYPE K7N OR EQUAL, 3/4" C.P. AS NOTED.
  - FUSES IEJ-EF02-623-F ARE BUSS TYPE PAN OR EQUAL.

REV	NO	DATE	BY	CHKD	APPV	DESCRIPTION
7	027, 1396	11/17/82	...	...	...	REVISED LOADS
6	885, 91	11/17/82	...	...	...	REVISED LOADS, ADDED FSAR FIG 8.3.1-16 PER ECN-51
5	1139	11/17/82	...	...	...	REVISED LOADS, NOTE 3, UPS FUSE
4	ECN-51	11/17/82	...	...	...	REVISED LOADS, ADDED CABLE NUMBERS, MISC CHANGES
3	ECN-51	8-15-77	...	...	...	DELETED CRD TRIP CONFIRM CIRCUIT, REVISED UNID NOS.
2	ECN-51	...	...	...	...	REVISED UNID NOS, SYN CKT.
1	ECN-51	3-11-75	...	...	...	SYN LIGHT BY MFRM.

POWERHOUSE  
UNITS 1-2  
SINGLE LINE  
120V CLASS IE AC VITAL POWER DISTRIBUTION SYSTEM-CHANNEL F

BELLEFONTE NUCLEAR PLANT  
TENNESSEE VALLEY AUTHORITY  
DIVISION OF ENGINEERING DESIGN

SUBMITTED: [Signature]  
RECOMMENDED: [Signature]  
APPROVED: [Signature]

INSPECTED AND APPROVED FOR ISSUE: [Signature]

KNOXVILLE 4 5 88 E SBW0625-EJ-03

FSAR

FSAR FIG. 8.3.1-16

THIS DRAWING IS UNDER