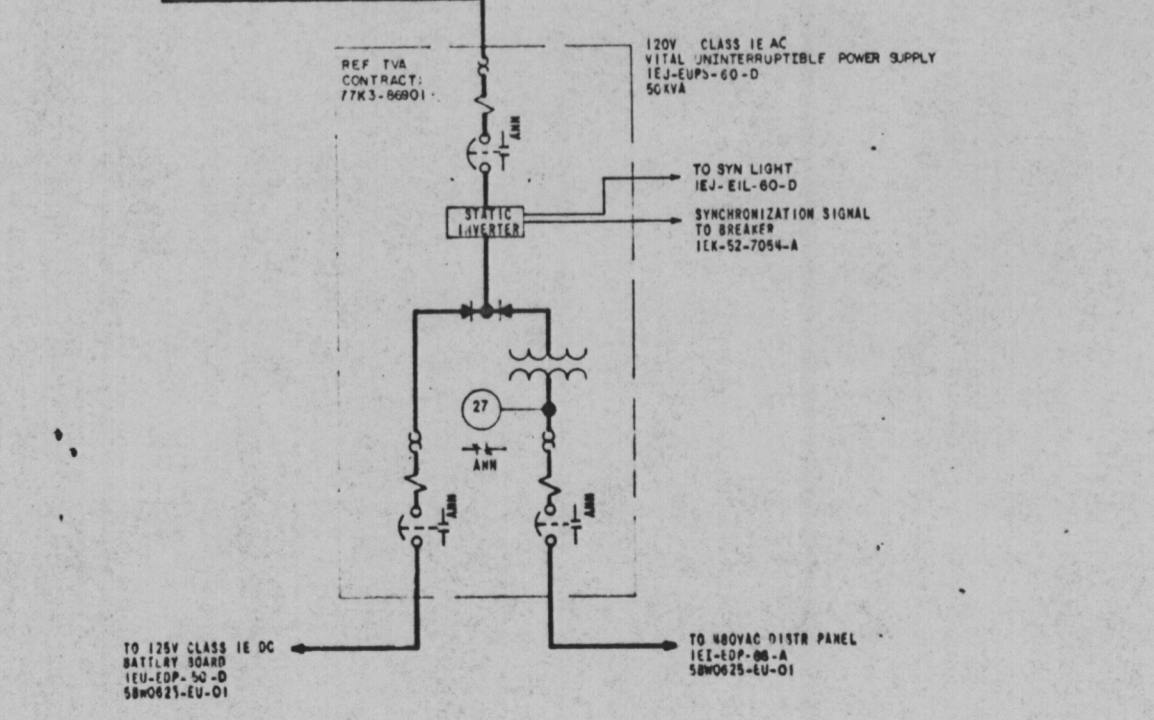
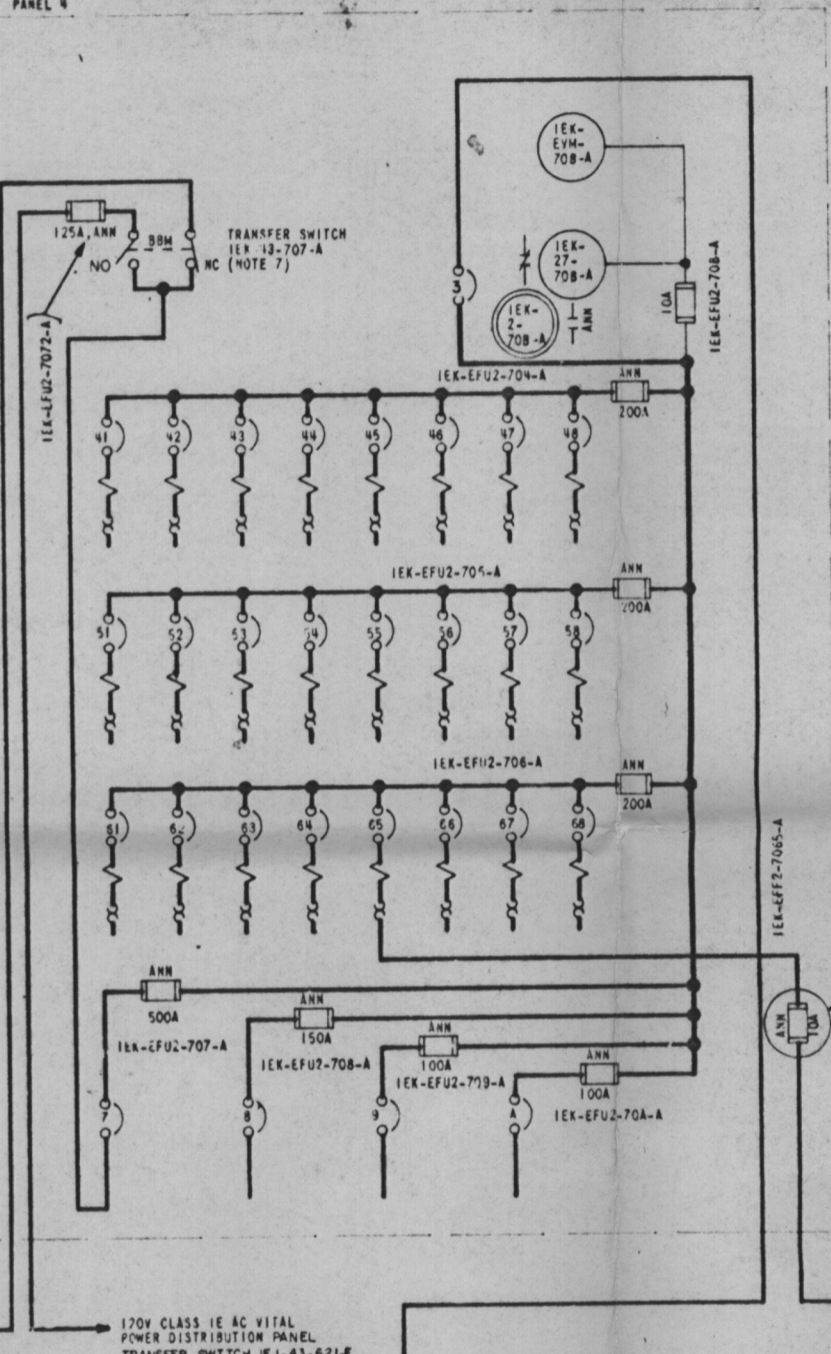
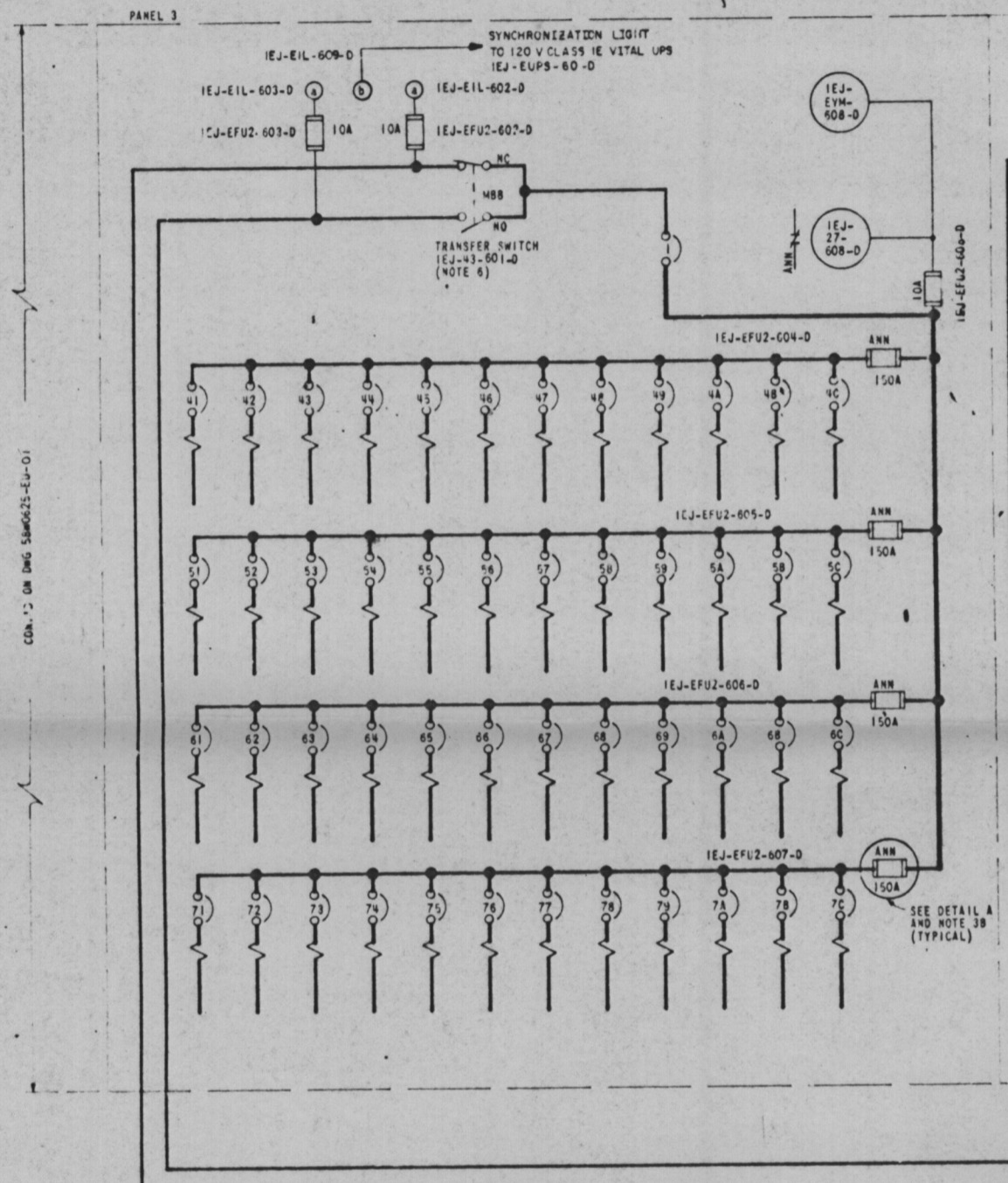


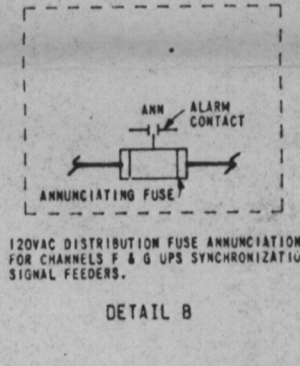
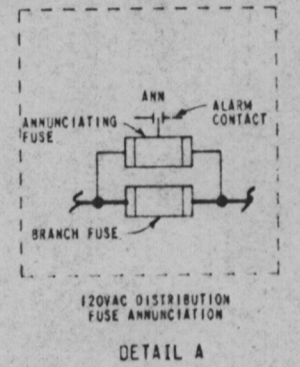
120V CLASS IE AC VITAL POWER DISTRIBUTION PANEL IEJ-EOP-60-D

120V CLASS IE AC AUXILIARY POWER DISTRIBUTION PANEL IEK-EOP-70-A



FUSE	ANN FUSE	FUSE SET
IEJ-EF02-604-D	IEJ-EF02-604-D	4
IEJ-EF02-605-D	IEJ-EF02-605-D	5
IEJ-EF02-606-D	IEJ-EF02-606-D	6
IEJ-EF02-607-D	IEJ-EF02-607-D	7
IEK-EF02-704-A	IEK-EF02-704-A	4
IEK-EF02-705-A	IEK-EF02-705-A	5
IEK-EF02-706-A	IEK-EF02-706-A	6
IEK-EF02-707-A	IEK-EF02-707-A	7
IEK-EF02-708-A	IEK-EF02-708-A	8
IEK-EF02-709-A	IEK-EF02-709-A	9
IEK-EF02-70A-A	IEK-EF02-70A-A	A
IEK-EF02-702-A	IEK-EF02-702-A	2
IEK-EF02-705-A	IEK-EF02-705-A	5

PANEL	BRK	UNIT	FRAME	TRIP	CABLE	CIRCUIT SCHEDULE	CIRCUIT
3	1	IEJ-E1-601-D	400	-	IEJ-ECA4-7-D	120V CLASS IE AC VITAL UNINTERRUPTIBLE POWER SUPPLY IEJ-EUPS-60-D	
3	1	IEJ-E1-601-D	400	-		120V CLASS IE AC AUXILIARY POWER DISTR PNL IEK-EOP-70-A	
3	1	IEJ-E1-601-D	400	-		120V CLASS IE AC VITAL POWER DISCONNECT SWITCH	(NOTE 12)
3	41	IEJ-E2-604-D	100	15			
3	42	IEJ-E2-604-D	100	15			
3	43	IEJ-E2-604-D	100	15			
3	44	IEJ-E2-604-D	100	15			
3	45	IEJ-E2-604-D	100	15			
3	46	IEJ-E2-604-D	100	15			
3	47	IEJ-E2-604-D	100	15			
3	48	IEJ-E2-604-D	100	15			
3	49	IEJ-E2-604-D	100	15			
3	50	IEJ-E2-604-D	100	15			
3	51	IEJ-E2-604-D	100	15			
3	52	IEJ-E2-604-D	100	15			
3	53	IEJ-E2-604-D	100	15			
3	54	IEJ-E2-604-D	100	15			
3	55	IEJ-E2-604-D	100	15			
3	56	IEJ-E2-604-D	100	15			
3	57	IEJ-E2-604-D	100	15			
3	58	IEJ-E2-604-D	100	15			
3	59	IEJ-E2-604-D	100	15			
3	60	IEJ-E2-604-D	100	15			
3	61	IEJ-E2-604-D	100	15			
3	62	IEJ-E2-604-D	100	15			
3	63	IEJ-E2-604-D	100	15			
3	64	IEJ-E2-604-D	100	15			
3	65	IEJ-E2-604-D	100	15			
3	66	IEJ-E2-604-D	100	15			
3	67	IEJ-E2-604-D	100	15			
3	68	IEJ-E2-604-D	100	15			
3	69	IEJ-E2-604-D	100	15			
3	70	IEJ-E2-604-D	100	15			
3	71	IEJ-E2-604-D	100	15			
3	72	IEJ-E2-604-D	100	15			
3	73	IEJ-E2-604-D	100	15			
3	74	IEJ-E2-604-D	100	15			
3	75	IEJ-E2-604-D	100	15			
3	76	IEJ-E2-604-D	100	15			
3	77	IEJ-E2-604-D	100	15			
3	78	IEJ-E2-604-D	100	15			
3	79	IEJ-E2-604-D	100	15			
3	80	IEJ-E2-604-D	100	15			
3	81	IEJ-E2-604-D	100	15			
3	82	IEJ-E2-604-D	100	15			
3	83	IEJ-E2-604-D	100	15			
3	84	IEJ-E2-604-D	100	15			
3	85	IEJ-E2-604-D	100	15			
3	86	IEJ-E2-604-D	100	15			
3	87	IEJ-E2-604-D	100	15			
3	88	IEJ-E2-604-D	100	15			
3	89	IEJ-E2-604-D	100	15			
3	90	IEJ-E2-604-D	100	15			
3	91	IEJ-E2-604-D	100	15			
3	92	IEJ-E2-604-D	100	15			
3	93	IEJ-E2-604-D	100	15			
3	94	IEJ-E2-604-D	100	15			
3	95	IEJ-E2-604-D	100	15			
3	96	IEJ-E2-604-D	100	15			
3	97	IEJ-E2-604-D	100	15			
3	98	IEJ-E2-604-D	100	15			
3	99	IEJ-E2-604-D	100	15			
3	100	IEJ-E2-604-D	100	15			



- NOTES:
- ALL COMPONENTS AND DEVICES ON THIS DRAWING WILL BE USED ON A CLASS 1 SYSTEM.
  - UNIT 1 IS SHOWN; UNIT 2 IS SIMILAR EXCEPT AS NOTED.
  - PROTECTIVE DEVICE ANNUNCIATION:
    - ALL BREAKERS ARE PROVIDED ALARM CONTACTS WHICH CLOSE WHEN BREAKER TRIPS DUE TO OVERLOAD OR SHORT CIRCUIT.
    - FUSES DESIGNATED BY "ANN" ARE PROVIDED ALARM CONTACTS WHICH CLOSE WHEN FUSE OPENS DUE TO OVERLOAD OR SHORT CIRCUIT (SEE DETAILS A AND B).
    - ALL CONTACTS ARE INDIVIDUALLY WIRED OUT TO MANUFACTURER'S TERMINAL BLOCKS AND ARE CONNECTED IN PARALLEL FOR COMMON ALARM PER SYSTEM; I.E., 120V CLASS IE AC VITAL POWER DISTRIBUTION SYSTEM AND 120V CLASS IE AC AUXILIARY POWER DISTRIBUTION SYSTEM.
  - ALL INSTRUMENT FUSES ARE BUSS TYPE KTH OR EQUAL.
  - ALL BRANCH OR FEEDER FUSES IN PANEL 3 ARE BUSS TYPE KTH OR EQUAL, EXCEPT AS NOTED.
  - TRANSFER SWITCH IEJ-43-601-D HAS MAKE-BEFORE-BREAK OPERATION, ALTERNATE POSITION SELECTION CLOSURES AUXILIARY CONTACT (WIRED OUT FOR ANNUNCIATION).
  - TRANSFER SWITCH IEK-43-707-A HAS BREAK-BEFORE-MAKE OPERATION.
  - BREAKERS 41-7C ARE HEIDEMANN "SERIES CP, CURVE 3, MAGNETIC-HYDRAULIC CIRCUIT CREAKERS. "Δ" INDICATES HIGH INRUSH MODEL CURVE 30 (PANEL 3 ONLY).
  - 120V CLASS IE AC VITAL POWER DISTRIBUTION SYSTEM AND 120V CLASS IE AC AUXILIARY POWER DISTRIBUTION SYSTEM ARE SINGLE-PHASE GROUNDING SYSTEMS.
  - FUSES IEJ-EF02-12-F ARE ANNUNCIATING TYPE USED FOR CIRCUIT PROTECTION (SEE DETAIL A).
  - ALL BRANCH OR FEEDER FUSES IN PANEL 4 ARE BUSS TYPE FAN OR EQUAL, EXCEPT AS NOTED.
  - BREAKER 1 OF PANEL 3 AND BREAKERS 3, 7, 8, 9 AND 4 OF PANEL 4 ARE NON-AUTOMATIC.

Doc # 52-432  
 Control # 83040536  
 Date 3-25-83 of Document  
 REGULATORY DOCKET FILE

PRC  
 APERTURE  
 CARD

NO	REV	DATE	BY	CHKD	APPV	REASON
6	1496	3-25-83	...	...	...	...
5	781, 951, 91	...	...	...	...	...
4	51	...	...	...	...	...

3	ECH-SI	8-15-77	...	...	...	...	...
2	ECH-SI, 207	2-27-77	...	...	...	...	...
1	ECH-SI	3-11-75	...	...	...	...	...

POWERHOUSE  
 UNITS 1-2  
 SINGLE LINE  
 120V CLASS IE AC VITAL POWER DISTRIBUTION SYSTEM - CHANNEL D  
 120V CLASS IE AC AUXILIARY POWER DISTRIBUTION SYSTEM - TRAIN A

BELLEFONTE NUCLEAR PLANT  
 TENNESSEE VALLEY AUTHORITY  
 DIVISION OF ENGINEERING DESIGN

SUBMITTED: [Signature]  
 RECOMMENDED: [Signature]  
 APPROVED: [Signature]

KNOXVILLE 88 E 5B0625-EJ-01 R6  
 FSAR