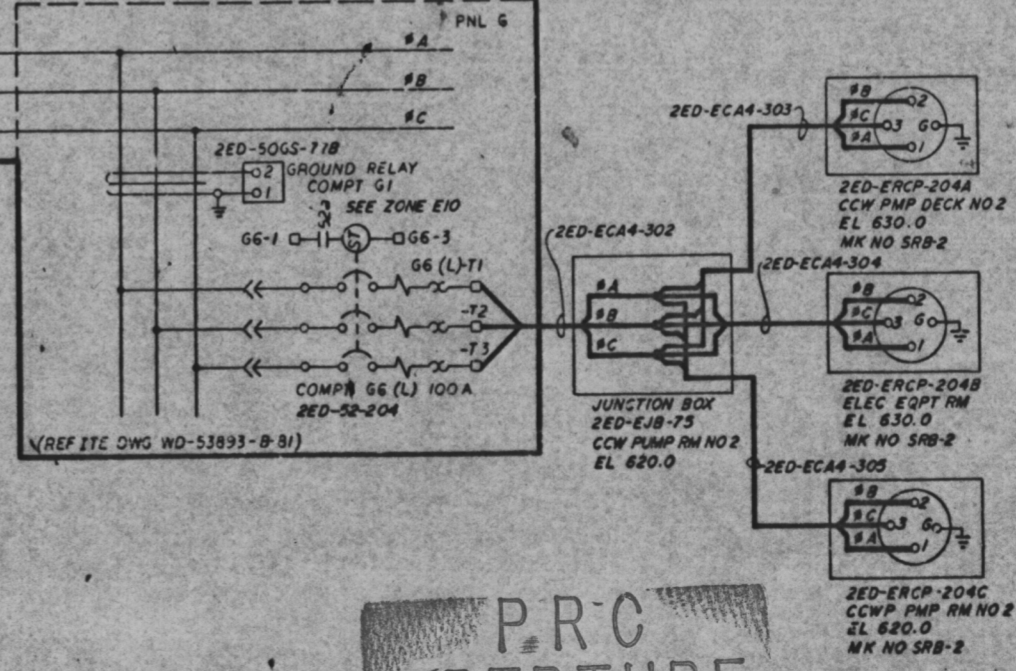
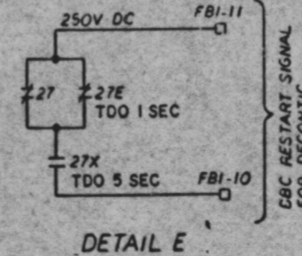
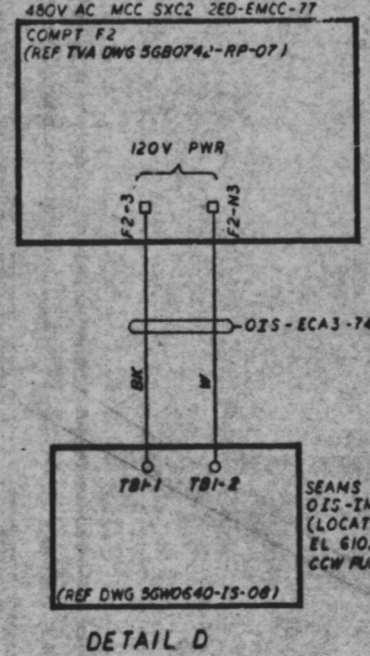
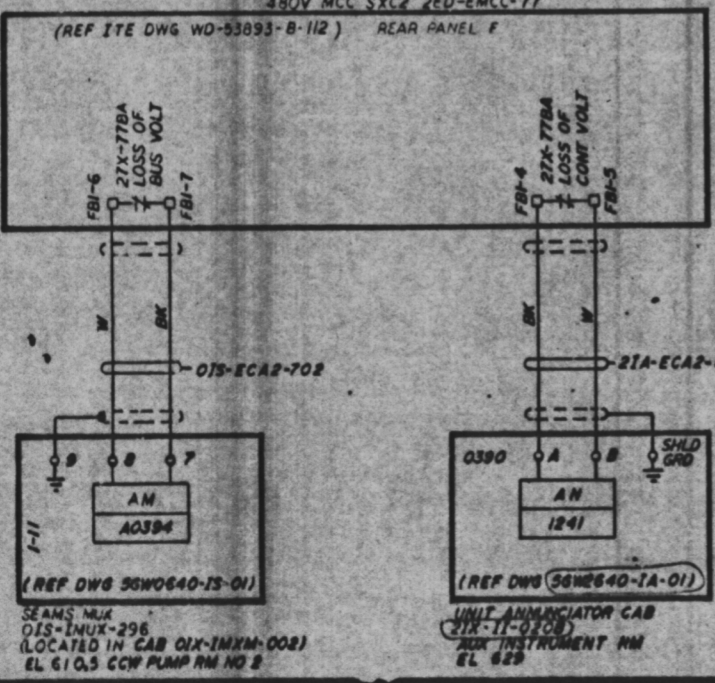
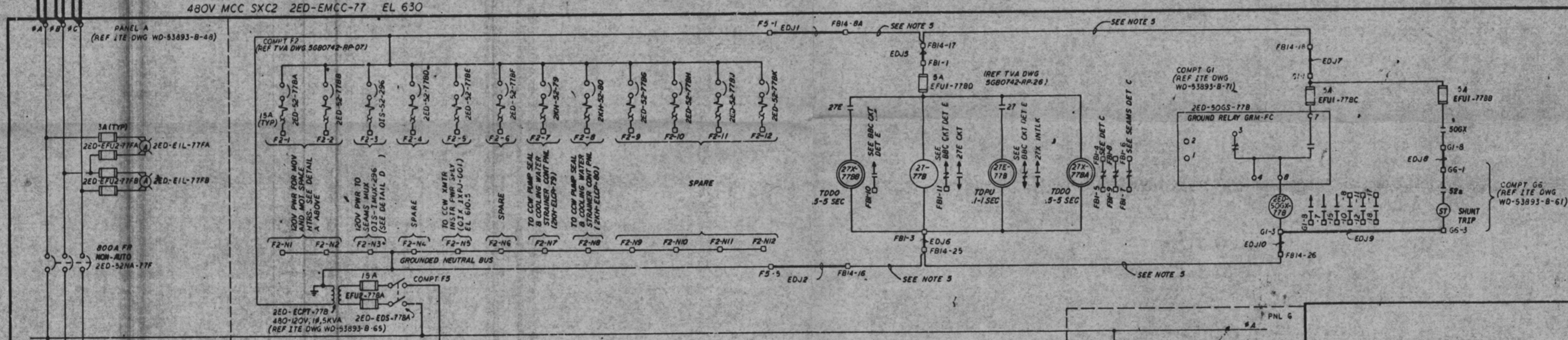
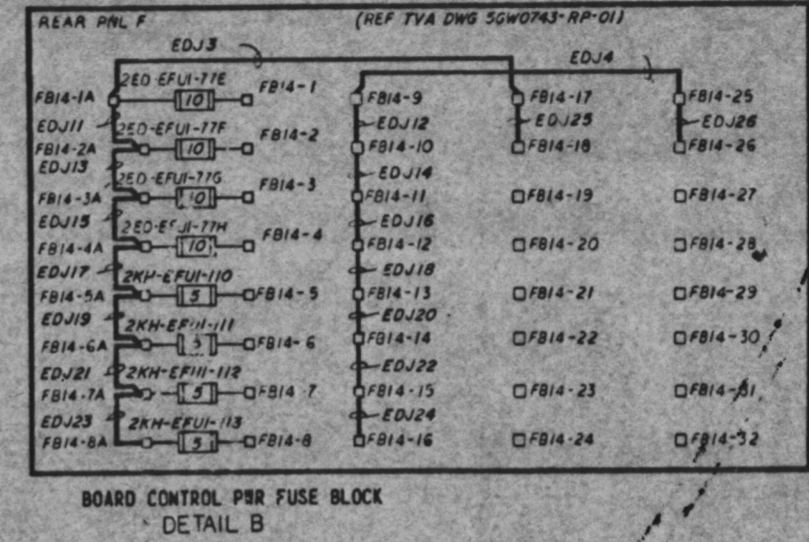
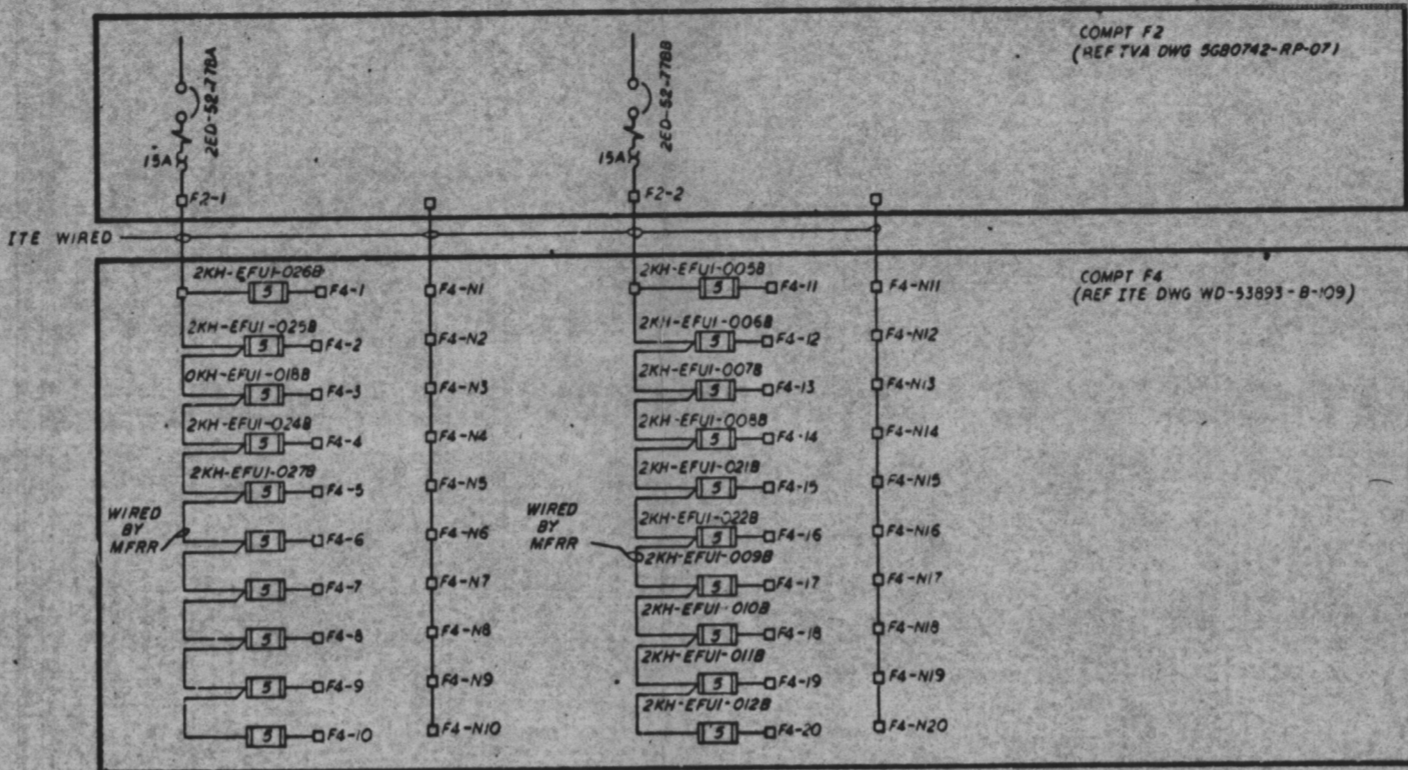
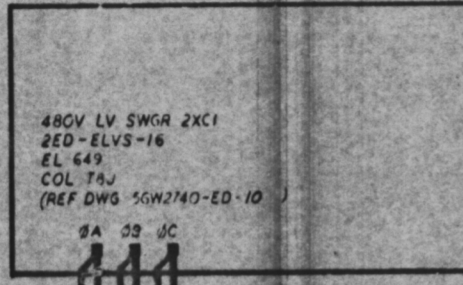


DWG NO	TITLE
96M2740-ED-01	480V MCC SXC2 SINGLE LINE

- NOTES:
- 480V MCC MFR I-T-E IMPERIAL CORP, CONTRACT NO 76K5-95242.
 - MOTOR CONTROL CENTER TERMINAL BLOCK DESIGNATIONS ARE SHOWN AS FOLLOWS:
FOR COMPT TERMINAL BLOCKS (MOUNTED INSIDE COMPARTMENTS OF PANEL F AND REAR OF COMPARTMENTS LOCATED IN ALL OTHER PANELS)

5	1-1	TERMINAL NO
5	1-1	COMPARTMENT
PANEL		
FOR COMMON RAIL MOUNTING PANEL (REAR OF PANEL F ONLY)		
F	B	1-2
F	B	1-2
TERMINAL NO		
TERMINAL BLOCK NO		
BACK PANEL		
PANEL		
 - SYSTEM JUMPERS TO BE FIELD WIRED ARE SHOWN PREFIXED WITH SYS DESIGNATION ED AND INDICATED BY A HEAVY LINE. COMPLETE JUMPER DESIGNATION WILL INCLUDE THE UNIT OF THE APPLICABLE ENCLOSURE, EXAMPLE: 2ED-EMCC-77-EDJ1.
 - SEE CABLE PROGRAM FOR COMPLETE CABLE INFORMATION.
 - SEE DETAIL B ON THIS DWG FOR FIELD INSTALLED REAR PNL F PANEL SIDE JUMPER NUMBERS AND JUMPER TERMINATION INFORMATION.

- SYMBOLS:
- AM NON-FETY RELATED SEAMS MONITORING SYSTEM
 - XXXX POINT NUMBER
 - AN UNIT ANNUNCIATION SYSTEM
 - XXX POINT NUMBER
 - MCC COMPARTMENT TERMINATION
 - LOW-VOLTAGE SWGR COMPARTMENT TERMINATION
 - DEVICE TERMINATION



Docket # 50-438
Control # 8304050536
Date 3-25-83 of Document
REGULATORY DOCKET FILE

REV	DATE	DESCRIPTION	BY	CHKD
1	12-14-82	ISSUE FOR CONSTRUCTION	W. J. PATTERSON JR.	
2	1-13-83	REVISIONS TO REFERENCE DWG PER FCN E-2824	S. R. ZASARY	
3	1-13-83	REVISIONS TO REFERENCE DWG PER FCN E-2824	S. R. ZASARY	

SCALE: EXCEPT AS NOTED

CCWP PUMPING STATION UNIT 2

SYSTEM SCHEMATIC
480V NORMAL AC
AUXILIARY POWER SYSTEM

BELLEVILLE NUCLEAR PLANT
TENNESSEE VALLEY AUTHORITY
DIVISION OF ENGINEERING DESIGN

SUBMITTED: Robert J. Hunt
RECOMMENDED: R. H. Henderson
APPROVED: John E. Holladay

INSPECTED AND APPROVED FOR ISSUE: R. M. Adams

KNOXVILLE 8-18-77

PRC
APERTURE
CARD