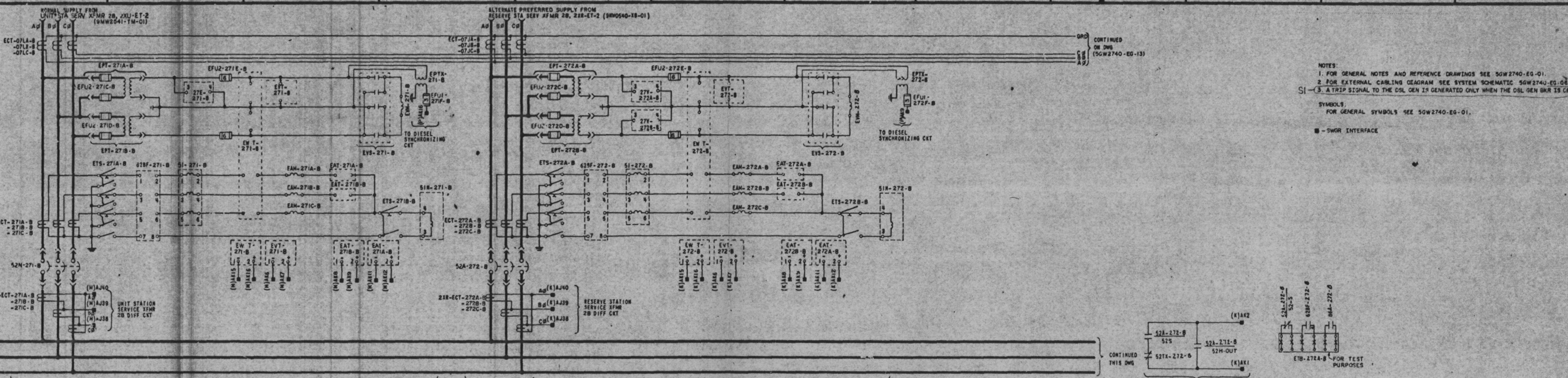


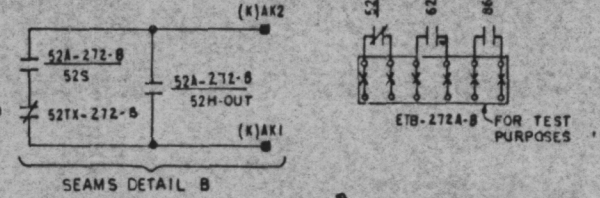
2 3 4 5 6 7 8 9 10 11 12

A B C D E F G

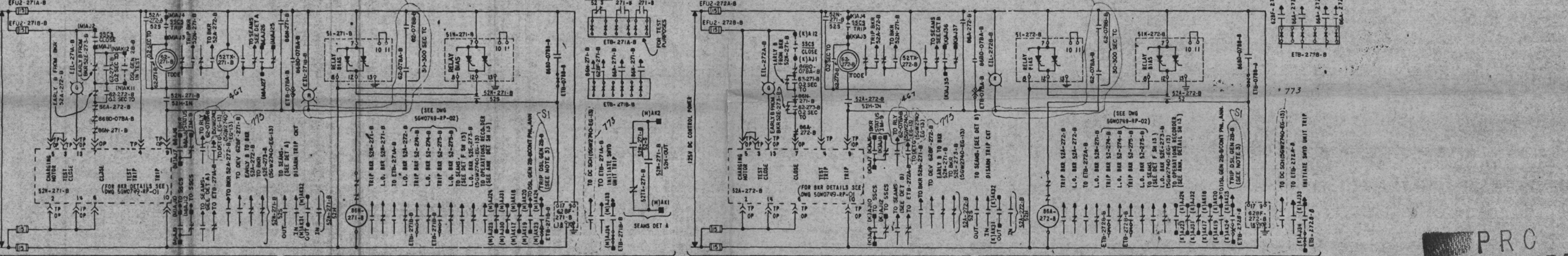


NOTES:  
 1. FOR GENERAL NOTES AND REFERENCE DRAWINGS SEE 5GW2740-EG-01.  
 2. FOR EXTERNAL CABLING DIAGRAMS SEE SYSTEM SCHEMATIC 5GW2740-EG-08.  
 3. A TRIP SIGNAL TO THE DOL GEN IS GENERATED ONLY WHEN THE DOL GEN BKR IS OPEN.

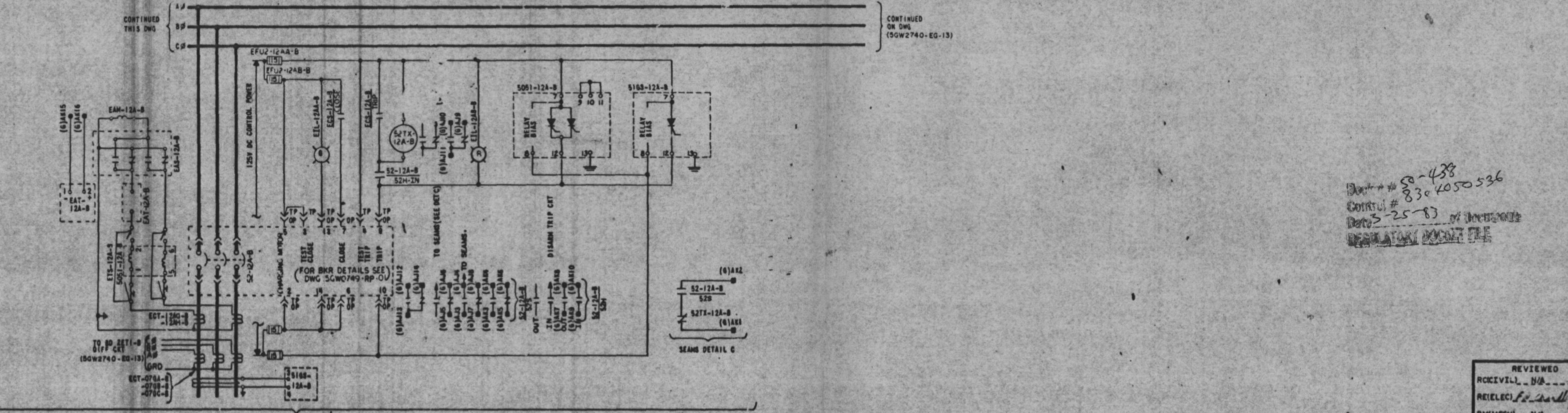
SYMBOLS:  
 FOR GENERAL SYMBOLS SEE 5GW2740-EG-01.  
 ■ - SWGR INTERFACE



6.9 KV SWGR 2ETI-B NORMAL SUPPLY AC SCHEMATIC      6.9 KV SWGR 2ETI-B ALTERNATE SUPPLY AC SCHEMATIC



6.9 KV SWGR 2ETI-B NORMAL SUPPLY DC SCHEMATIC      6.9 KV SWGR 2ETI-B ALTERNATE SUPPLY DC SCHEMATIC



NORMAL FEEDER TO 6.9 KV SWGR 2ETI-B AC & DC SCHEMATIC

PRC APERTURE CARD

2 773 12-11-79 4050536

CHANGED 628F CONTACT NOTATION, B ADDED 52S CONTACT NOTATION.

50-438  
 830 4050536  
 5-25-83

REV	NO.	DATE	BY	CHKD	APPD
1	467	51			

GENERAL UNIT 2

SYSTEM SCHEMATIC  
 6.9KV CLASS IE AC AUX POWER DISTRIBUTION SYSTEM

BELLEVILLE NUCLEAR PLANT  
 TENNESSEE VALLEY AUTHORITY  
 DIVISION OF ENGINEERING DESIGN

REVIEWED	APPROVED
RECEIVED	SUBMITTED
RECEIVED	APPROVED

NOV 11 1979

ORIGINAL DWG. NO. 5GW2740-EG-12 R2